

INDEX PARTS LIST

AUGUST 1999

4199x, 4200x, 4219x

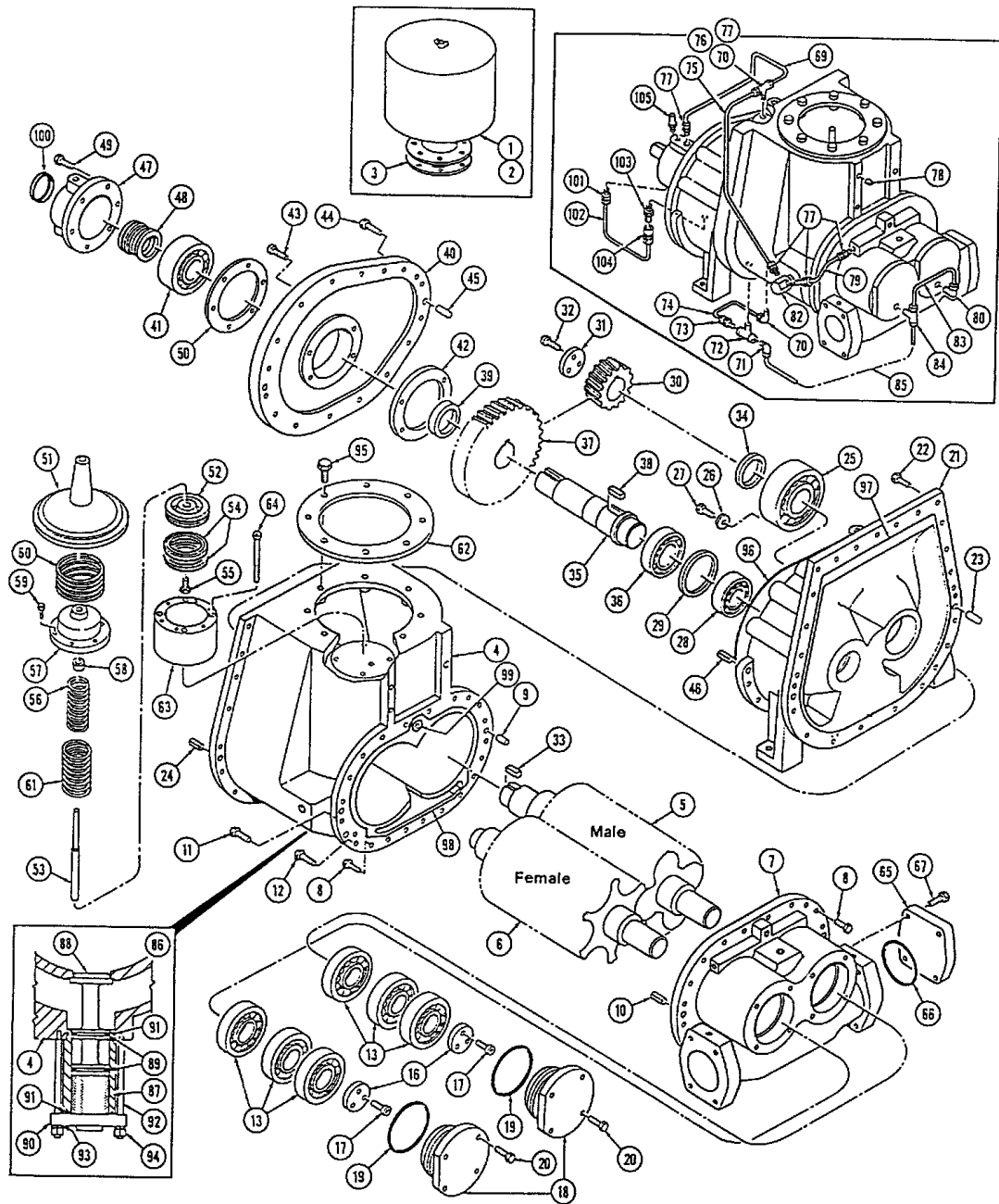
GROUP NUMBER	GROUP NAME	GROUP NUMBER	GROUP NAME
1	AIR END – AIR CLEANER WE125SSII	7A	INSTRUMENT PANEL - CONTROL ENCL – A T L STARTERS - HOUSED
1A	AIR END – AIR CLEANER WE150SSII	7B	STARTERS – STARTER ENCLOSURE - SUPPORTS
1B	AIR END – AIR CLEANER WE200SSII	8	FRAME – BEDPLATE - DRIVE COUPLING – ELECTRIC MOTORS
2	AIR RECEIVER/OIL RESERVOIR - SEPARATOR – OIL PIPING WE125SSII	9	HOUSING – AIR COOLED
2A	AIR RECEIVER/OIL RESERVOIR – SEPARATOR – OIL PIPING\ WE150SSII	9A	HOUSING – WATER COOLED
2B	AIR RECEIVER/OIL RESERVOIR – SEPARATOR – OIL PIPING/ WE200SSII	10	DECALS AND LABELS
3	AIR CLEANERS – OPTIONAL	11	OPTIONS – ACCESSORIES - TOOLS
4	OIL COOLER AIR COOLED – WITH AFTERCOOLER – MOISTURE SEPARATOR – WE125-150SSII		
4A	OIL COOLER AIR COOLED - WITHOUT AFTERCOOLER WE200SSII		
5	OIL COOLER WATER COOLED – WITHOUT AFTERCOOLER		
5A	OIL COOLER WATER COOLED - WITH AFTERCOOLER		
6	CONTROLS – CONTROL PIPING - WITHOUT BYPASS CONTROL		
6A	CONTROL – CONTROL PIPING - WITH BYPASS CONTROL		
6B	CONTROLS – CONTROL PIPING - LEAD/LAG WITHOUT BYPASS CONTROL		
6C	CONTROLS – CONTROL PIPING – ELECTRONIC BYPASS CONTROL		
7	INSTRUMENT PANEL – CONTROL ENCLOSURE – A T L STARTERS – UNHOUSED		

WHEN CONSULTING YOUR DISTRIBUTOR OR THE FACTORY CONCERNING YOUR COMPRESSOR OR WHEN ORDERING SERVICE LITERATURE OR SERVICE PARTS, ALWAYS FURNISH COMPLETE UNIT MODEL AND SERIAL NUMBER.

NOTE:
ILLUSTRATIONS USED IN THIS PARTS LIST ARE OF TYPICAL PARTS AND MAY DIFFER IN DETAIL.

P/L 4199x,4200x,4219x,

ECN 46313



TI00183 ECN 46313

PARTS LIST GROUPS AND COMPONENTS

**MODEL
WE125SSII**

PART NUMBERS

GROUP NO. 1 AIR END – AIR CLEANER

REF	PART DESCRIPTION	QTY	G19		
			STANDARD	STANDARD	STANDARD
			G26-914-10 G43-848-3 A219-238 100 PSI	G19-631-1 G26-914-12 G43-848-3 A219-238 125 PSI	G19-631-1 G26-914-21 G43-848-3 A219-238 150 PSI
1	AIR CLEANER	1	43-848-3 Inc. A	43-848-3 Inc. A	43-848-3 Inc. A
2	ELEMENT	1	43-848-1—A	43-848-1—A	43-848-1—A
3	GASKET	1	16-2064	16-2064	16-2064
4	CYLINDER	1	1-852-6	1-852-6	1-852-6
5	ROTOR, MALE	1	101-195	101-195	101-195
6	ROTOR, FEMALE	1	101-194-6	101-194-6	101-194-6
7	RETAINER, BEARING, REAR	1	31-966-10	31-966-10	31-966-10
8	SCREW, CAP, SPECIAL	20	02-891	02-891	02-891
9	PIN, DOWEL	2	17-1106-9	17-1106-9	17-1106-9
10	PIN, SPIROL	3	17-1280-1	17-1280-1	17-1280-1
11	SCREW, CAP	1	34-1364-36	34-1364-36	34-1364-36
12	SCREW, CAP	1	34-1364-10	34-1364-10	34-1364-10
13	BEARING, MALE, ROTOR	6	181-585	181-585	181-585
16	RETAINER, BEARING	2	31-972	31-972	31-972
17	SCREW, SPECIAL	6	34-1364-13	34-1364-13	34-1364-13
18	COVER, REAR, BEARING	2	14-1791	14-1791	14-1791
19	SEAL, O-RING	2	125-955-8	125-955-8	125-955-8
20	SCREW, CAP	8	02-891	02-891	02-891
21	HOUSING, GEAR	1	37-307-1	37-307-1	37-307-1
22	SCREW, CAP	24	02-891	02-891	02-891
23	PIN, DOWEL	1	17-1106-10	17-1106-10	17-1106-10
24	PIN, SPIROL	1	17-1280-1	17-1280-1	17-1280-1
25	BEARING, ROLLER	1	181-584	181-584	181-584
26	WASHER, SPECIAL	1	20-875	20-875	20-875
27	SCREW, CAP, SPECIAL	1	34-1364-14	34-1364-14	34-1364-14
28	BEARING, ROLLER	1	181-441	181-441	181-441
29	SPACER	1	22-1143	22-1143	22-1143
30	GEAR, DRIVEN	1	26-914-10	26-914-12	26-914-21
31	RETAINER	1	31-972-2	31-972-2	31-972-2
32	SCREW, SPECIAL	3	34-1364-13	34-1364-13	34-1364-13
33	KEY, DRIVE	1	09-211	09-211	09-211
34	SPACER	1	22-1204	22-1204	22-1204
35	SHAFT, INPUT	1	27-1838	27-1838	27-1838
36	BEARING, ROLLER	1	181-571	181-571	181-571
37	GEAR, DRIVE	1	26-915-10	26-915-12	26-915-21
38	KEY, DRIVE	1	09-211	09-211	09-211
39	SPACER	1	22-1192	22-1192	22-1192
40	RETAINER, BEARING	1	31-973	31-973	31-973
41	BEARING, ROLLER	1	181-570	181-570	181-570
42	RETAINER, BEARING	1	31-974	31-974	31-974
43	SCREW, CAP, SPECIAL	4	34-1364-15	34-1364-15	34-1364-15
44	SCREW, CAP	14	02-892	02-892	02-892
45	PIN, DOWEL	1	17-1106-10	17-1106-10	17-1106-10
46	PIN, SPIROL	1	17-1280-1	17-1280-1	17-1280-1
47	RETAINER, SEAL	1	31-901-2	31-901-2	31-901-2
48	SEAL, INPUT SHAFT	1	125-848	125-848	125-848
49	SCREW, CAP	6	02-860	02-860	02-860
50	GASKET	1	16-1998-1	16-1998-1	16-1998-1
51	VALVE	1	15-1775-1	15-1775-1	15-1775-1
	PLUG, PIPE	1	011-104	011-104	011-104
52	PISTON	1	8-856	8-856	8-856
53	SHAFT	1	27-1847-1	27-1847-1	27-1847-1
54	SEAL, PISTON	2	125-928-41	125-928-41	125-928-41
55	SCREW, CAP	1	34-1364-31	34-1364-31	34-1364-31

PARTS LIST GROUPS AND COMPONENTS

**MODEL
WE125SSII**

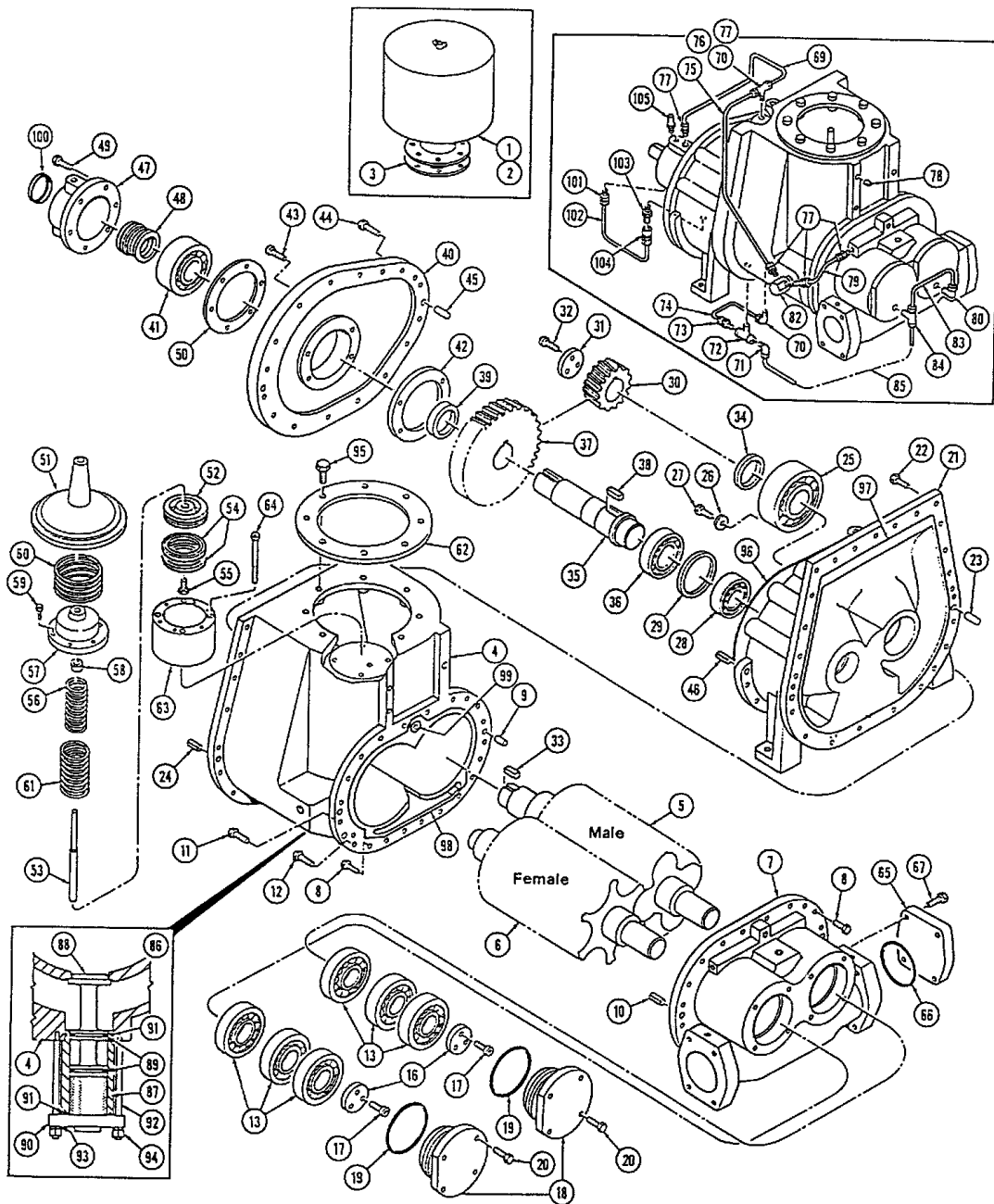
PART NUMBERS

GROUP NO. 1 AIR END – AIR CLEANER

G19

REF	PART DESCRIPTION	QTY	STANDARD	STANDARD	STANDARD
			G19-631-1	g19-631-1	g19-631-1
			G26-914-10 G43-848-3 A219-238 100 PSI	G26-914-12 G43-848-3 A219-238 125 PSI	G26-914-21 G43-848-3 A219-238 150 PSI
56	SPRING	1	24-794	24-794	24-794
57	COVER	1	14-1827	14-1827	14-1827
58	BUSHING	1	21-1090	21-1090	21-1090
59	SCREW, CAP	6	02-778	02-778	02-778
60	SPRING	1	24-803	24-803	24-803
61	SPRING	1	24-793	24-793	24-793
62	FLANGE, VALVE RETAINER	1	65-2414-1	65-2414-1	65-2414-1
63	CYLINDER	1	1-866	1-866	1-866
64	SCREW, CAP, SPECIAL	4	34-1364-23	34-1364-23	34-1364-23
65	COVER, UNUSED PORT	1	54-857	54-857	54-857
66	SEAL, O-RING	1	125-955-8	125-955-8	125-955-8
67	SCREW, CAP	4	02-952	02-952	02-952
69	TUBE	1	55-48-20	55-48-20	55-48-20
70	FITTING, ELBOW	3	182-237	182-237	182-237
71	FITTING	1	H182-214	H182-214	H182-214
72	FITTING, TEE	1	182-947-2	182-947-2	182-947-2
73	FITTING	1	H182-355	H182-355	H182-355
74	TUBE	1	55-48-6	55-48-6	55-48-6
75	TUBE	1	55-48-11	55-48-11	55-48-11
76	FITTING, TEE	1	182-849	182-849	182-849
77	FITTING	4	182-238	182-238	182-238
78	PLUG, PIPE	1	011-103	011-103	011-103
79	TUBE	1	55-48-31	55-48-31	55-48-31
80	FITTING, ELBOW	1	H182-401	H182-401	H182-401
82	PLATE, FITTING	1	38-1304-2	38-1304-2	38-1304-2
83	TUBE	1	55-38-33	55-38-33	55-38-33
84	FITTING, TEE	1	182-979	182-979	182-979
85	TUBE	1	55-38-51	55-38-51	55-38-51
86	CYLINDER ASSEMBLY	1		REFER	REFER
87	CYLINDER	1			
88	PISTON	1		TO	TO
89	SEAL, O-RING	2			
90	COVER	1		BYPASS	BYPASS
91	SEAL, O-RING	2			
92	STUD	4		CONTROL	CONTROL
93	WASHER, LOCK	4			
94	NUT	4		GROUP	GROUP
95	SCREW, CAP, SPECIAL	8	02-1013	02-1013	02-1013
	GAGE, RESTRICTION INDICATOR	1	60-560	60-560	60-560
96	SEAL, O-RING	1	125-955-12	125-955-12	125-955-12
97	SEAL, O-RING	1	125-955-11	125-955-11	125-955-11
98	SEAL, O-RING	1	125-955-7	125-955-7	125-955-7
99	SEAL, O-RING	1	125-955-9	125-955-9	125-955-9
100	SEAL, SPECIAL	1	125-950-6	125-950-6	125-950-6
101	FITTING	1	182-208	182-208	182-208
102	TUBE	1	55-29-59	55-29-59	55-29-59
103	VALVE, CHECK	1	15-1703	15-1703	15-1703
104	FITTING	1	182-611-1	182-611-1	182-611-1
105	VENT, BREATHER	1	49-94	49-94	49-94

THIS PAGE LEFT INTENTIONALLY BLANK.



TI00183 ECN 46313

PARTS LIST GROUPS AND COMPONENTS

**MODEL
WE150SSII**

PART NUMBERS

GROUP NO. 1A AIR END – AIR CLEANER

REF	PART DESCRIPTION	QTY	STANDARD	STANDARD	STANDARD
			G19-631-1	g19-631-1	g19-631-1
			G26-914-6	G26-914-10	G26-914-11
			G43-848-3	G43-848-3	G43-848-3
			A219-238	A219-238	A219-238
			100 PSI	125 PSI	150 PSI
1	AIR CLEANER	1	43-848-3	43-848-3	43-848-3
			Inc. A	Inc. A	Inc. A
2	ELEMENT	1	43-848-1—A	43-848-1—A	43-848-1—A
3	GASKET	1	16-2064	16-2064	16-2064
4	CYLINDER	1	1-852-6	1-852-6	1-852-6
5	ROTOR, MALE	1	101-195	101-195	101-195
6	ROTOR, FEMALE	1	101-194-6	101-194-6	101-194-6
7	RETAINER, BEARING, REAR	1	31-966-10	31-966-10	31-966-10
8	SCREW, CAP, SPCEIAL	20	02-891	02-891	02-891
9	PIN, DOWEL	2	17-1106-9	17-1106-9	17-1106-9
10	PIN, SPIROL	3	17-1280-1	17-1280-1	17-1280-1
11	SCREW, CAP	1	34-1364-36	34-1364-36	34-1364-36
12	SCREW, CAP	1	34-1364-10	34-1364-10	34-1364-10
13	BEARING, MALE, ROTOR	6	181-585	181-585	181-585
16	RETAINER, BEARING	2	31-972	31-972	31-972
17	SCREW, SPECIAL	6	34-1364-13	34-1364-13	34-1364-13
18	COVER, REAR, BEARING	2	14-1791	14-1791	14-1791
19	SEAL, O-RING	2	125-955-8	125-955-8	125-955-8
20	SCREW, CAP	8	02-891	02-891	02-891
21	HOUSING, GEAR	1	37-307-1	37-307-1	37-307-1
22	SCREW, CAP	24	02-891	02-891	02-891
23	PIN, DOWEL	1	17-1106-10	17-1106-10	17-1106-10
24	PIN, SPIROL	1	17-1280-1	17-1280-1	17-1280-1
25	BEARING, ROLLER	1	181-584	181-584	181-584
26	WASHER, SPECIAL	1	20-875	20-875	20-875
27	SCREW, CAP, SPECIAL	1	34-1364-14	34-1364-14	34-1364-14
28	BEARING, ROLLER	1	181-441	181-441	181-441
29	SPACER	1	22-1143	22-1143	22-1143
30	GEAR, DRIVEN	1	26-914-6	26-914-10	26-914-11
31	RETAINER	1	31-972-2	31-972-2	31-972-2
32	SCREW, SPECIAL	3	34-1364-13	34-1364-13	34-1364-13
33	KEY, DRIVE	1	09-211	09-211	09-211
34	SPACER	1	22-1204	22-1204	22-1204
35	SHAFT, INPUT	1	27-1838	27-1838	27-1838
36	BEARING, ROLLER	1	181-571	181-571	181-571
37	GEAR, DRIVE	1	26-915-6	26-915-10	26-915-11
38	KEY, DRIVE	1	09-211	09-211	09-211
39	SPACER	1	22-1192	22-1192	22-1192
40	RETAINER, BEARING	1	31-973	31-973	31-973
41	BEARING, ROLLER	1	181-570	181-570	181-570
42	RETAINER, BEARING	1	31-974	31-974	31-974
43	SCREW, CAP, SPECIAL	4	34-1364-15	34-1364-15	34-1364-15
44	SCREW, CAP	14	02-892	02-892	02-892
45	PIN, DOWEL	1	17-1106-10	17-1106-10	17-1106-10
46	PIN, SPIROL	1	17-1280-1	17-1280-1	17-1280-1
47	RETAINER, SEAL	1	31-901-2	31-901-2	31-901-2
48	SEAL, INPUT SHAFT	1	125-848	125-848	125-848
49	SCREW, CAP	6	02-860	02-860	02-860
50	GASKET	1	16-1998-1	16-1998-1	16-1998-1
51	VALVE	1	15-1775-1	15-1775-1	15-1775-1
	PLUG, PIPE	1	011-104	011-104	011-104
52	PISTON	1	8-856	8-856	8-856
53	SHAFT	1	27-1847-1	27-1847-1	27-1847-1
54	SEAL, PISTON	1	125-928-41	125-928-41	125-928-41
55	SCREW, CAP	1	34-1364-31	34-1364-31	34-1364-31

PARTS LIST GROUPS AND COMPONENTS

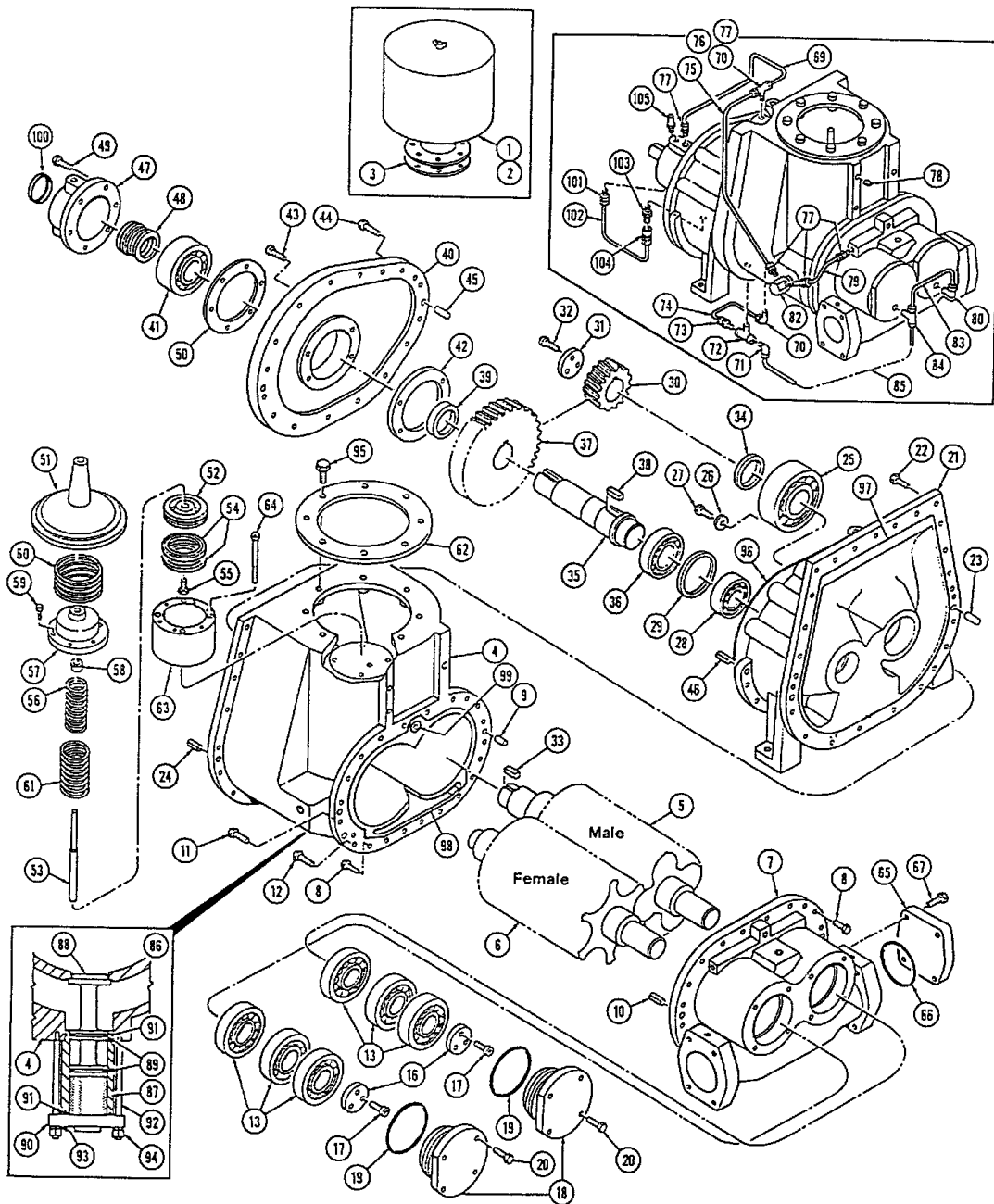
**MODEL
WE150SSII**

PART NUMBERS

GROUP NO. 1A AIR END – AIR CLEANER

REF	PART DESCRIPTION	QTY	STANDARD	STANDARD	STANDARD
			G19-631-1	G19-631-1	G19-631-1
			G26-914-6 G43-848-3 A219-238 100 PSI	G26-914-10 G43-848-3 A219-238 125 PSI	G26-914-11 G43-848-3 A219-238 150 PSI
56	SPRING	1	24-794	24-794	24-794
57	COVER	1	14-1827	14-1827	14-1827
58	BUSHING	1	21-1090	21-1090	21-1090
59	SCREW, CAP	6	02-778	02-778	02-778
60	SPRING	1	24-792	24-792	24-792
61	SPRING	1	24-803	24-803	24-803
62	FLANGE, VALVE RETAINER	1	65-2414-1	65-2414-1	65-2414-1
63	CYLINDER	1	1-866	1-866	1-866
64	SCREW, CAP, SPECIAL	4	34-1364-23	34-1364-23	34-1364-23
65	COVER, UNUSED PORT	1	54-857	54-857	54-857
66	SEAL, O-RING	1	125-955-8	125-955-8	125-955-8
67	SCREW, CAP	4	02-952	02-952	02-952
69	TUBE	1	55-48-20	55-48-20	55-48-20
70	FITTING, ELBOW	3	182-237	182-237	182-237
71	FITTING	1	H182-390	H182-390	H182-390
72	FITTING, TEE	1	182-947-2	182-947-2	182-947-2
73	FITTING	1	H182-355	H182-355	H182-355
74	TUBE	1	55-48-6	55-48-6	55-48-6
75	TUBE	1	55-48-11	55-48-11	55-48-11
76	FITTING, TEE	1	182-849	182-849	182-849
77	FITTING	4	182-238	182-238	182-238
78	PLUG, PIPE	1	011-103	011-103	011-103
79	TUBE	1	55-48-31	55-48-31	55-48-31
80	FITTING, ELBOW	1	H182-401	H182-401	H182-401
82	PLATE, FITTING	1	38-1304-2	38-1304-2	38-1304-2
83	TUBE	1	55-38-33	55-38-33	55-38-33
84	FITTING, TEE	1	182-979	182-979	182-979
85	TUBE	1	55-38-51	55-38-51	55-38-51
86	CYLINDER ASSEMBLY	1		REFER	REFER
87	CYLINDER	1			
88	PISTON	1		TO	TO
89	SEAL, O-RING	2			
90	COVER	1		BYPASS	BYPASS
91	SEAL, O-RING	2			
92	STUD	4		CONTROL	CONTROL
93	WASHER, LOCK	4			
94	NUT	4		GROUP	GROUP
95	SCREW, CAP, SPECIAL	8	02-1013	02-1013	02-1013
	GAGE, RESTRICTION INDICATOR	1	60-560	60-560	60-560
96	SEAL, O-RING	1	125-955-12	125-955-12	125-955-12
97	SEAL, O-RING	1	125-955-11	125-955-11	125-955-11
98	SEAL, O-RING	1	125-955-7	125-955-7	125-955-7
99	SEAL, O-RING	1	125-955-9	125-955-9	125-955-9
100	SEAL, SPECIAL	1	125-950-6	125-950-6	125-950-6
101	FITTING	1	182-208	182-208	182-208
102	TUBE	1	55-29-59	55-29-59	55-29-59
103	VALVE, CHECK	1	15-1703	15-1703	15-1703
104	FITTING	1	182-611-1	182-611-1	182-611-1
105	VENT, BREATHER	1	49-94	49-94	49-94

THIS PAGE LEFT INTENTIONALL BALNK.



T100183 ECN 46313

PARTS LIST GROUPS AND COMPONENTS

**MODEL
WE200SSII**

PART NUMBERS

GROUP NO. 1B AIR END – AIR CLEANER

REF	PART DESCRIPTION	QTY	STANDARD	STANDARD	STANDARD
			G19-631-1	G19-631-1	G19-631-1
			G26-914	G26-914-23	G26-914-6
			G43-848-3	G43-848-3	G43-848-3
			A219-238	A219-238	A219-238
			100 PSI	125 PSI	150 PSI
1	AIR CLEANER	1	43-848-3	43-848-3	43-848-3
			Inc. A	Inc. A	Inc. A
2	ELEMENT	1	43-848-1—A	43-848-1—A	43-848-1—A
3	GASKET	1	16-2064	16-2064	16-2064
4	CYLINDER	1	1-852-6	1-852-6	1-852-6
5	ROTOR, MALE	1	101-195	101-195	101-195
6	ROTOR, FEMALE)	1	101-194-6	101-194-6	101-194-6
7	RETAINER, BEARING, REAR	1	31-966-10	31-966-10	31-966-10
8	SCREW, CAP, SPCEIAL	20	02-891	02-891	02-891
9	PIN, DOWEL	1	17-1106-9	17-1106-9	17-1106-9
10	PIN, SPIROL	1	17-1280-1	17-1280-1	17-1280-1
11	SCREW, CAP	1	34-1364-36	34-1364-36	34-1364-36
12	SCREW, CAP	1	34-1364-10	34-1364-10	34-1364-10
13	BEARING, MALE, ROTOR	3	181-585	181-585	181-585
16	RETAINER, BEARING	2	31-972	31-972	31-972
17	SCREW, SPECIAL	6	34-1364-13	34-1364-13	34-1364-13
18	COVER, REAR, BEARING	2	14-1791	14-1791	14-1791
19	SEAL, O-RING	2	125-955-8	125-955-8	125-955-8
20	SCREW, CAP	8	02-891	02-891	02-891
21	HOUSING, GEAR	1	37-307-1	37-307-1	37-307-1
22	SCREW, CAP	24	02-891	02-891	02-891
23	PIN, DOWEL	1	17-1106-10	17-1106-10	17-1106-10
24	PIN, SPIROL	1	17-1280-1	17-1280-1	17-1280-1
25	BEARING, ROLLER	1	181-584	181-584	181-584
26	WASHER, SPECIAL	1	20-875	20-875	20-875
27	SCREW, CAP, SPECIAL	1	34-1364-14	34-1364-14	34-1364-14
28	BEARING, ROLLER	1	181-441	181-441	181-441
29	SPACER	1	22-1143	22-1143	22-1143
30	GEAR, DRIVEN	1	26-914	26-914-23	26-914-6
31	RETAINER	1	31-972-2	31-972-2	31-972-2
32	SCREW, SPECIAL	3	34-1364-13	34-1364-13	34-1364-13
33	KEY, DRIVE	1	09-211	09-211	09-211
34	SPACER	1	22-1204	22-1204	22-1204
35	SHAFT, INPUT	1	27-1838	27-1838	27-1838
36	BEARING, ROLLER	1	181-571	181-571	181-571
37	GEAR, DRIVE	1	26-915	26-915-23	26-915-11
38	KEY, DRIVE	1	09-211	09-211	09-211
39	SPACER	1	22-1192	22-1192	22-1192
40	RETAINER, BEARING	1	31-973	31-973	31-973
41	BEARING, ROLLER	1	181-570	181-570	181-570
42	RETAINER, BEARING	1	31-974	31-974	31-974
43	SCREW, CAP, SPECIAL	4	34-1364-15	34-1364-15	34-1364-15
44	SCREW, CAP	14	02-892	02-892	02-892
45	PIN, DOWEL	1	17-1106-10	17-1106-10	17-1106-10
46	PIN, SPIROL	1	17-1280-1	17-1280-1	17-1280-1
47	RETAINER, SEAL	1	31-901-2	31-901-2	31-901-1
48	SEAL, INPUT SHAFT	1	125-848	125-848	125-848
49	SCREW, CAP	6	02-860	02-860	02-860
50	GASKET	1	16-1998-1	16-1998-1	16-1998-1
51	VALVE	1	15-1775-1	15-1775-1	15-1775-1
	PLUG, PIPE	1	011-104	011-104	011-104
52	PISTON	1	8-856	8-856	8-856
53	SHAFT	1	27-1847-1	27-1847-1	27-1847-1
54	SEAL, PISTON	1	125-928-41	125-928-41	125-928-41
55	SCREW, CAP	1	34-1364-31	34-1364-31	34-1364-31

PARTS LIST GROUPS AND COMPONENTS

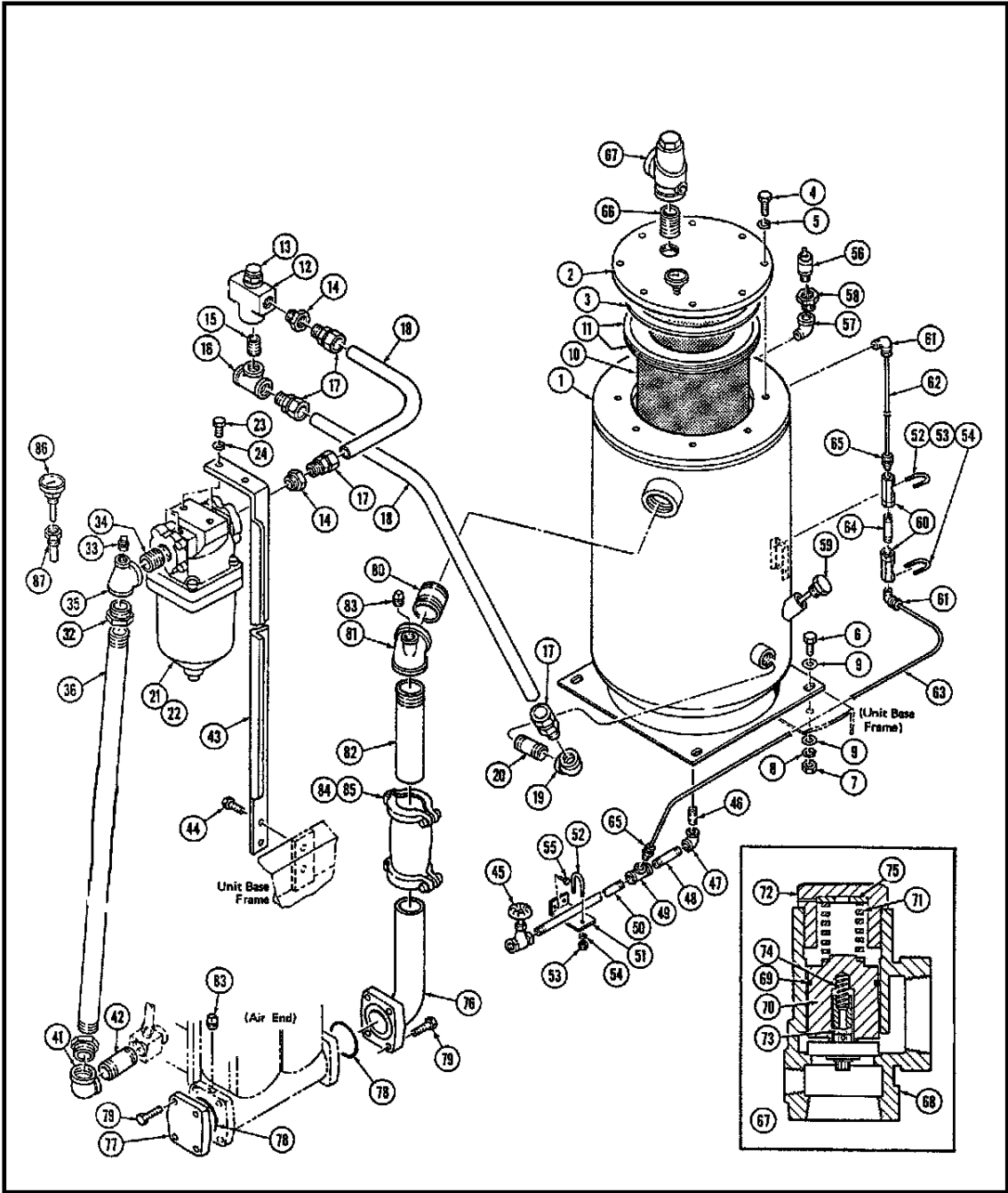
**MODEL
WE150SSII**

PART NUMBERS

GROUP NO. 1A AIR END – AIR CLEANER

REF	PART DESCRIPTION	QTY	STANDARD	STANDARD	STANDARD
			G19-631-1	G19-631-1	G19-631-1
			G26-914 G43-848-3 A219-238 100 PSI	G26-914-23 G43-848-3 A219-238 125 PSI	G26-914-6 G43-848-3 A219-238 150 PSI
56	SPRING	1	24-794	24-794	24-794
57	COVER	1	14-1827	14-1827	14-1827
58	BUSHING	1	21-1090	21-1090	21-1090
59	SCREW, CAP	6	02-778	02-778	02-778
60	SPRING	1	24-792	24-792	24-792
61	SPRING	1	24-803	24-803	24-803
62	FLANGE, VALVE RETAINER	1	65-2414-1	65-2414-1	65-2414-1
63	CYLINDER	1	1-866	1-866	1-866
64	SCREW, CAP, SPECIAL	4	34-1364-23	34-1364-23	34-1364-23
65	COVER, UNUSED PORT	1	54-857	54-857	54-857
66	SEAL, O-RING	1	125-955-8	125-955-8	125-955-8
67	SCREW, CAP	4	02-952	02-952	02-952
69	TUBE	1	55-48-20	55-48-20	55-48-20
70	FITTING, ELBOW	3	182-237	182-237	182-237
71	FITTING	1	H182-390	H182-390	H182-390
72	FITTING, TEE	1	182-947-2	182-947-2	182-947-2
73	FITTING	1	H182-355	H182-355	H182-355
74	TUBE	1	55-48-6	55-48-6	55-48-6
75	TUBE	1	55-48-11	55-48-11	55-48-11
76	FITTING, TEE	1	182-849	182-849	182-849
77	FITTING	4	182-238	182-238	182-238
78	PLUG, PIPE	1	011-103	011-103	011-103
79	TUBE	1	55-48-31	55-48-31	55-48-31
80	FITTING, ELBOW	1	H182-401	H182-401	H182-401
82	PLATE, FITTING	1	38-1304-2	38-1304-2	38-1304-2
83	TUBE	1	55-38-33	55-38-33	55-38-33
84	FITTING, TEE	1	182-979	182-979	182-979
85	TUBE	1	55-38-51	55-38-51	55-38-51
86	CYLINDER ASSEMBLY	1		REFER	REFER
87	CYLINDER	1			
88	PISTON	1		TO	TO
89	SEAL, O-RING	2			
90	COVER	1		BYPASS	BYPASS
91	SEAL, O-RING	2			
92	STUD	4		CONTROL	CONTROL
93	WASHER, LOCK	4			
94	NUT	4			
95	SCREW, CAP, SPECIAL	8	02-1013	GROUP	GROUP
	GAGE, RESTRICTION INDICATOR	1	60-560	02-1013	02-1013
96	SEAL, O-RING	1	125-955-12	60-560	60-560
97	SEAL, O-RING	1	125-955-11	125-955-12	125-955-12
98	SEAL, O-RING	1	125-955-7	125-955-11	125-955-11
99	SEAL, O-RING	1	125-955-9	125-955-7	125-955-7
100	SEAL, SPECIAL	1	125-950-6	125-955-9	125-955-9
101	FITTING	1	182-208	125-950-6	125-950-6
102	TUBE	1	55-29-59	182-208	182-208
103	VALVE, CHECK	1	15-1703	55-29-59	55-29-59
104	FITTING	1	182-611-1	15-1703	15-1703
105	VENT, BREATHER	1	49-94	182-611-1	182-611-1
				49-94	49-94

THIS PAGE LEFT INTENTIONALLY BLANK.



WM125/150SSII
 TI00187 ECN 46313

PARTS LIST GROUPS AND COMPONENTS

MODEL WE125SSII			PART NUMBERS		
GROUP NO. 2 AIR RECEIVER/OIL RESERVOIR - SEPARATOR – OIL PIPING			STANDARD		
REF	PART DESCRIPTION	QTY			
			1G69-827-1 28G116-387-3 WE125SSII		
1	AIR/OIL RECEIVER	1	A69-827-1 Inc. A to B		
2	COVER	1	14-1771—A		
3	GASKET	1	16-2048		
4	SCREW, CAP	8	34-1220-11		
5	WASHER, LOCK	8	20-917-2		
6	SCREW, CAP	4	02-37		
7	NUT	3	04-103		
8	WASHER, LOCK	4	05-51		
9	WASHER, FLAT	8	06-4		
10	ELEMENT, SEPARATOR	1	43-1035 Inc. C		
11	GASKET	2	16-2048—C		
12	BODY, THERMAL VALVE	1	116-387-3		
13	VALVE, THERMAL	1	116-448		
14	BUSHING, PIPE	2	013-1085		
15	NIPPLE, PIPE	1	013-191		
16	TEE, PIPE	1	013-1669		
17	FITTING	4	182-436-8		
18	TUBE	2	55-2569		
19	ELBOW, PIPE	1	013-407		
20	NIPPLE, PIPE	1	013-174		
18	TUBE	1	55-2569		
14	BUSHING, PIPE	1	013-1085		
21	FILTER, OIL	1	43-1007		
22	KIT, FILTER ELEMENT	1	204-1312 Inc. D to E		
	ELEMENT, FILTER	1	43-1007-1—D		
	SEAL, ELEMENT	1	125-897		
	SEAL, FLANGE	1	125-764—E		
23	SCREW, CAP	2	02-187		
24	WASHER, LOCK	2	05-53		
25	FITTING	2	H182-358		
26	FITTING	2	H182-393		
27	FITTING	2	182-906-2		
28	FITTING	1	182-906-1		
29	VALVE, DRAIN	1	15-338		
30	TUBE	2	55-29-36		
31	SWTICH, INDICATOR	1	60-471		
33	PLUG, PIPE	1	011-205		
34	NIPPLE, PIPE	1	013-8		
32	BUSHING, PIPE	2	182-422-7		
35	TEE, PIPE	1	013-1662		
36	HOSE	1	73-951-11		
41	ELBOW, PIPE	1	013-464		
42	NIPPLE, PIPE	1	182-906-7		
43	SUPPORT, FILTER	1	A39-6535		
44	SCREW, SPECIAL	2	34-1512-1		
45	VALVE, DRAIN	1	H15-1387		
46	NIPPLE, PIPE	1	013-111		
47	ELBOW, PIPE	1	013-404		
48	NIPPLE, PIPE	1	013-121		
49	TEE, PIPE	1	013-1603		
50	NIPPLE, SPECIAL	1	33-114-27		
51	BRACKET	1	39-6546		
52	BOLT, SPECIAL	3	34-1495		

PARTS LIST GROUPS AND COMPONENTS

MODEL WE125SSII

PART NUMBERS

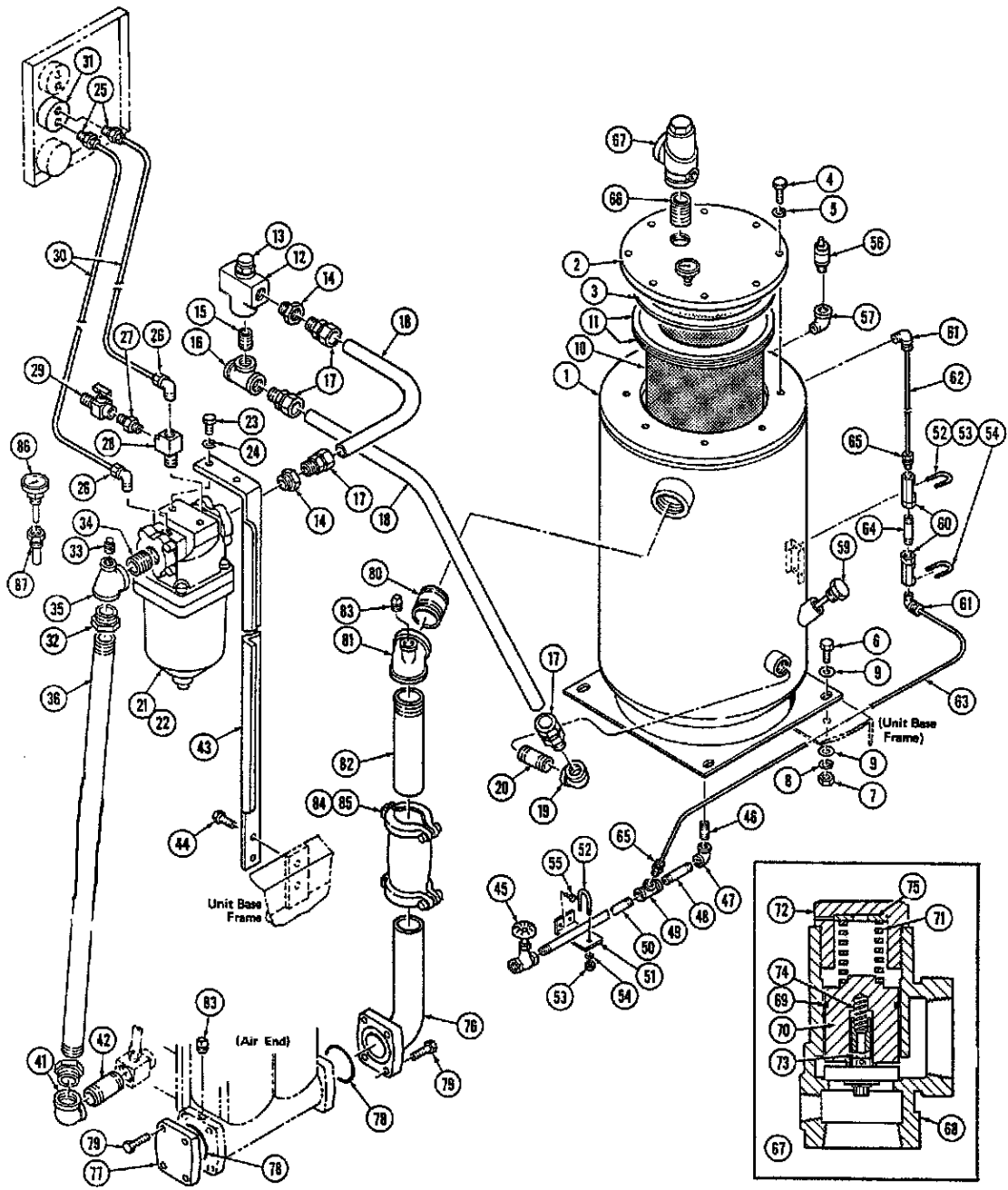
**GROUP NO. 2 AIR RECEIVER/OIL RESERVOIR -
SEPARATOR – OIL PIPING**

STANDARD

STANDARD

REF	PART DESCRIPTION	QTY	STANDARD	STANDARD	
			1G69-827-1 28G116-387-3 WM125SSII WE125SSII		
53	NUT	6	04-17		
54	WASHER, LOCK	6	05-49		
55	SCREW, SPECIAL	2	34-1512-2		
56	VALVE, PRESSURE RELIEF	1	15-1270-4		
57	ELBOW, PIPE	1	013-507		
58	BUSHING, PIPE	1	013-1079		
59	PLUG, FILLER	1	182-750-14		
60	GAGE, SIGHT	2	60-453		
61	FITTING	2	H182-383		
62	TUBE	1	55-29-58		
63	TUBE	1	55-29-72		
64	NIPPLE, PIPE	1	013-72		
65	FITTING	2	H182-382		
66	NIPPLE, PIPE	1	013-211		
67	VALVE, MINIMUM PRESSURE/CHECK	1	15-1622		
			Inc. G to H		
68	BODY, MINIMUM PRESSURE VALVE	1	220-187-1—G		
69	SEAL, O-RING	1	220-187-3		
70	PISTON, LARGE	1	220-187-2		
71	SPRING, LARGE	1	220-187-6		
72	CAP	1	220-187-5		
73	PISTON, SMALL, ASSEMBLY	1	220-187-8		
74	SPRING, SMALL	1	220-187-4		
75	SPACER	1	06-6-1—H		
76	FITTING, FLANGE	1	1A54-857-5		
77	FITTING, COVER	1	54-857		
78	SEAL	2	125-826-51		
79	SCREW, CAP	8	02-949		
80	NIPPLE, PIPE	1	013-231		
81	TEE, PIPE	1	33-1181		
82	NIPPLE, SPECIAL	1	33-178-30		
83	PLUG, PIPE	2	011-204		
84	COUPLING, SPECIAL	1	28-483-7		
			Inc. I		
85	GASKET	1	220-313-7		
86	GAGE, TEMPERATURE	1	GROUP 5		
87	WELL, GAGE	1	GROUP 5		

THIS PAGE LEFT INTENTIONALLY BLANK.



WE125/150SSII
 TI00186 ECN 46313

PARTS LIST GROUPS AND COMPONENTS

MODEL WE150SSII			PART NUMBERS		
GROUP NO. 2A AIR RECEIVER/OIL RESERVOIR - SEPARATOR – OIL PIPING			STANDARD		
REF	PART DESCRIPTION	QTY			
			G69-827-1 28G116-387-3 WE150SSII		
1	AIR/OIL RECEIVER, WITHOUT	1	A69-827-1 Inc. A to B		
2	COVER	1	14-1771—A		
3	GASKET	1	16-2048		
4	SCREW, CAP	8	34-1220-11		
5	WASHER, LOCK	8	20-917-2		
6	SCREW, CAP	4	02-37		
7	NUT	3	04-103		
8	WASHER, LOCK	4	05-51-1		
9	WASHER, FLAT	8	06-4		
10	ELEMENT, SEPARATOR	1	43-1035-1 Inc. C		
11	GASKET	2	16-2048—C		
12	BODY, THERMAL VALVE	1	116-387-3		
13	VALVE, THERMAL	1	116-448		
14	BUSHING, PIPE	2	013-1085		
15	NIPPLE, PIPE	1	013-191		
16	TEE, PIPE	1	013-1669		
17	FITTING	4	182-436-8		
18	TUBE	2	55-2569		
19	ELBOW, PIPE	1	013-407		
20	NIPPLE, PIPE	1	013-174		
18	TUBE	1	55-2569		
14	BUSHING, PIPE	1	013-1085		
21	FILTER, OIL	1	43-1007		
22	KIT, FILTER ELEMENT	1	204-1312 Inc. D to E		
	ELEMENT, FILTER	1	43-1007-1—D		
	SEAL, ELEMENT	1	125-897		
	SEAL, FLANGE	1	125-764—E		
23	SCREW, CAP	2	02-187		
24	WASHER, LOCK	2	05-53		
25	FITTING	2	H182-358		
26	FITTING	2	H182-393		
27	FITTING	2	182-906-2		
28	FITTING	1	182-908-1		
29	VALVE, DRAIN	1	15-338		
30	TUBE	2	55-29-36		
31	SWTICH, INDICATOR	1	76-1097		
33	PLUG, PIPE	1	011-205		
34	NIPPLE, PIPE	1	013-8		
32	BUSHING, PIPE	2	182-422-7		
35	TEE, PIPE	1	013-1662		
36	HOSE	1	73-951-11		
41	ELBOW, PIPE	1	013-464		
42	NIPPLE, PIPE	1	182-906-7		
43	SUPPORT, FILTER	1	A39-6535		
44	SCREW, SPECIAL	2	34-1512-1		
45	VALVE, DRAIN	1	H15-1387		
46	NIPPLE, PIPE	1	013-111		
47	ELBOW, PIPE	1	013-404		
48	NIPPLE, PIPE	1	013-121		
49	TEE, PIPE	1	013-1603		
50	NIPPLE, SPECIAL	1	33-114-27		
51	BRACKET	1	39-6546		
52	BOLT, SPECIAL	3	34-1495		

PARTS LIST GROUPS AND COMPONENTS

**MODEL
WE150SSII**

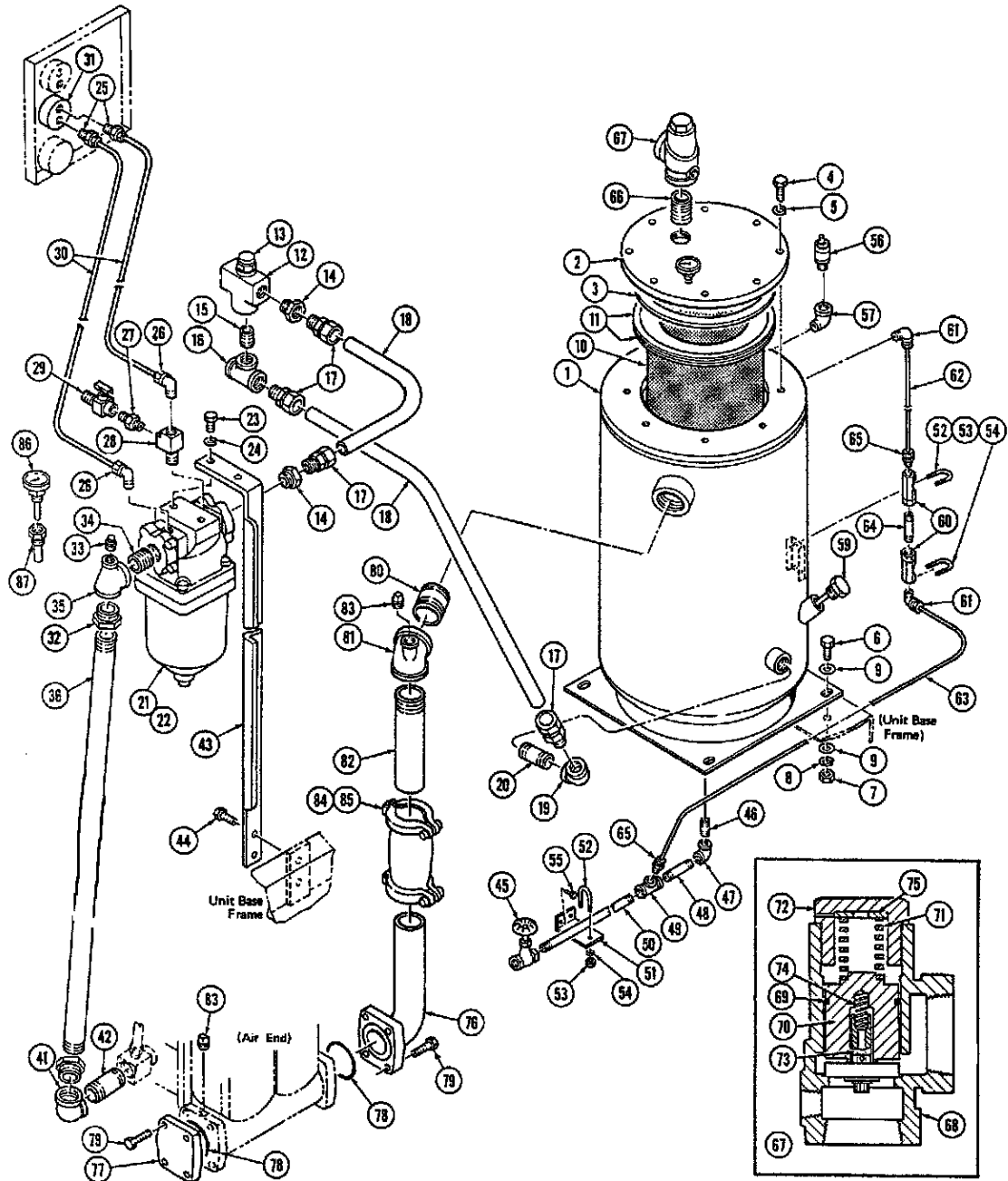
PART NUMBERS

**GROUP NO. 2A AIR RECEIVER/OIL RESERVOIR -
SEPARATOR – OIL PIPING**

STANDARD

REF	PART DESCRIPTION	QTY	STANDARD
			4G69-827-1 28G116-387-3 WM125SSII WE125SSII
53	NUT	6	04-17
54	WASHER, LOCK	6	05-49
55	SCREW, SPECIAL	2	34-1512-2
56	VALVE, PRESSURE RELIEF	1	15-1270-4
57	ELBOW, PIPE	1	013-507
58	BUSHING, PIPE	1	013-1079
59	PLUG, FILLER	1	182-750-14
60	GAGE, SIGHT	2	60-453
61	FITTING	2	H182-383
62	TUBE	1	55-29-58
63	TUBE	1	55-29-72
64	NIPPLE, PIPE	1	013-72
65	FITTING	2	H182-382
66	NIPPLE, PIPE	1	013-211
67	VALVE, MINIMUM PRESSURE/CHECK	1	15-1622 Inc. G to H
68	BODY, MINIMUM PRESSURE VALVE	1	220-187-1—G
69	SEAL, O-RING	1	220-187-3
70	PISTON, LARGE	1	220-187-2
71	SPRING, LARGE	1	220-187-6
72	CAP	1	220-187-5
73	PISTON, SMALL, ASSEMBLY	1	220-187-8
74	SPRING, SMALL	1	220-187-4
75	SPACER	1	06-6-1—H
76	FITTING, FLANGE	1	1A54-857-5
77	FITTING, COVER	1	54-857
78	SEAL	2	125-826-51
79	SCREW, CAP	8	02-949
80	NIPPLE, PIPE	1	013-231
81	TEE, PIPE	1	33-1181
82	NIPPLE, SPECIAL	1	33-178-30
83	PLUG, PIPE	2	011-204
84	COUPLING, SPECIAL	1	28-483-7 Inc. I
85	GASKET	1	220-313-7-I
86	GAGE, TEMPERATURE	1	GROUP 5
87	WELL, GAGE	1	GROUP 5

THIS PAGE LEFT INTENTIONALLY BLANK.



WE200SSII
 TI00185 ECN 46313

PARTS LIST GROUPS AND COMPONENTS

MODEL WE200SSII			PART NUMBERS		
GROUP NO. 2B AIR RECEIVER/OIL RESERVOIR - SEPARATOR – OIL PIPING			STANDARD		
REF	PART DESCRIPTION	QTY			
			G69-827-1 29G116-387-3 WE200SSII		
1	AIR/OIL RECEIVER, WITHOUT	1	A69-827-1 Inc. A to B		
2	COVER	1	14-1771—A		
3	GASKET	1	16-2048		
4	SCREW, CAP	8	34-1220-11		
5	WASHER, LOCK	8	20-917-2		
6	SCREW, CAP	4	02-37		
7	NUT	3	04-103		
8	WASHER, LOCK	4	05-51-1		
9	WASHER, FLAT	8	06-4		
10	ELEMENT, SEPARATOR	1	43-1035-1 Inc. C		
11	GASKET	2	16-2048—C		
12	BODY, THERMAL VALVE	1	116-387-3		
13	VALVE, THERMAL	1	116-448		
14	BUSHING, PIPE	2	013-1085		
15	NIPPLE, PIPE	1	013-191		
16	TEE, PIPE	1	013-608		
17	FITTING	4	182-436-9		
18	TUBE	2	55-1961		
19	ELBOW, PIPE	1	013-463		
20	NIPPLE, PIPE	1	013-174		
18	TUBE	1	55-2569		
14	BUSHING, PIPE	1	013-1085		
21	FILTER, OIL	1	43-1007		
22	KIT, FILTER ELEMENT	1	204-1312 Inc. D to E		
	ELEMENT, FILTER	1	43-1007-1—D		
	SEAL, ELEMENT	1	125-897		
	SEAL, FLANGE	1	125-764—E		
23	SCREW, CAP	2	02-187		
24	WASHER, LOCK	2	05-53		
25	FITTING	2	H182-358		
26	FITTING	2	H182-393		
27	FITTING	2	182-906-2		
28	FITTING	1	182-908-1		
29	VALVE, DRAIN	1	15-338		
30	TUBE	2	55-29-36		
31	SWTICH, INDICATOR	1	76-1097		
33	PLUG, PIPE	1	011-205		
34	NIPPLE, PIPE	1	013-8		
32	BUSHING, PIPE	2	182-422-7		
35	TEE, PIPE	1	013-1662		
36	HOSE	1	73-951-11		
41	ELBOW, PIPE	1	013-464		
42	NIPPLE, PIPE	1	182-906-7		
43	SUPPORT, FILTER	1	A39-6535		
44	SCREW, SPECIAL	2	34-1512-1		
45	VALVE, DRAIN	1	H15-1387		
46	NIPPLE, PIPE	1	013-111		
47	ELBOW, PIPE	1	013-404		
48	NIPPLE, PIPE	1	013-121		
49	TEE, PIPE	1	013-1603		
50	NIPPLE, SPECIAL	1	33-114-27		
51	BRACKET	1	39-6546		
52	BOLT, SPECIAL	3	34-1495		

PARTS LIST GROUPS AND COMPONENTS

**MODEL
WE200SSII**

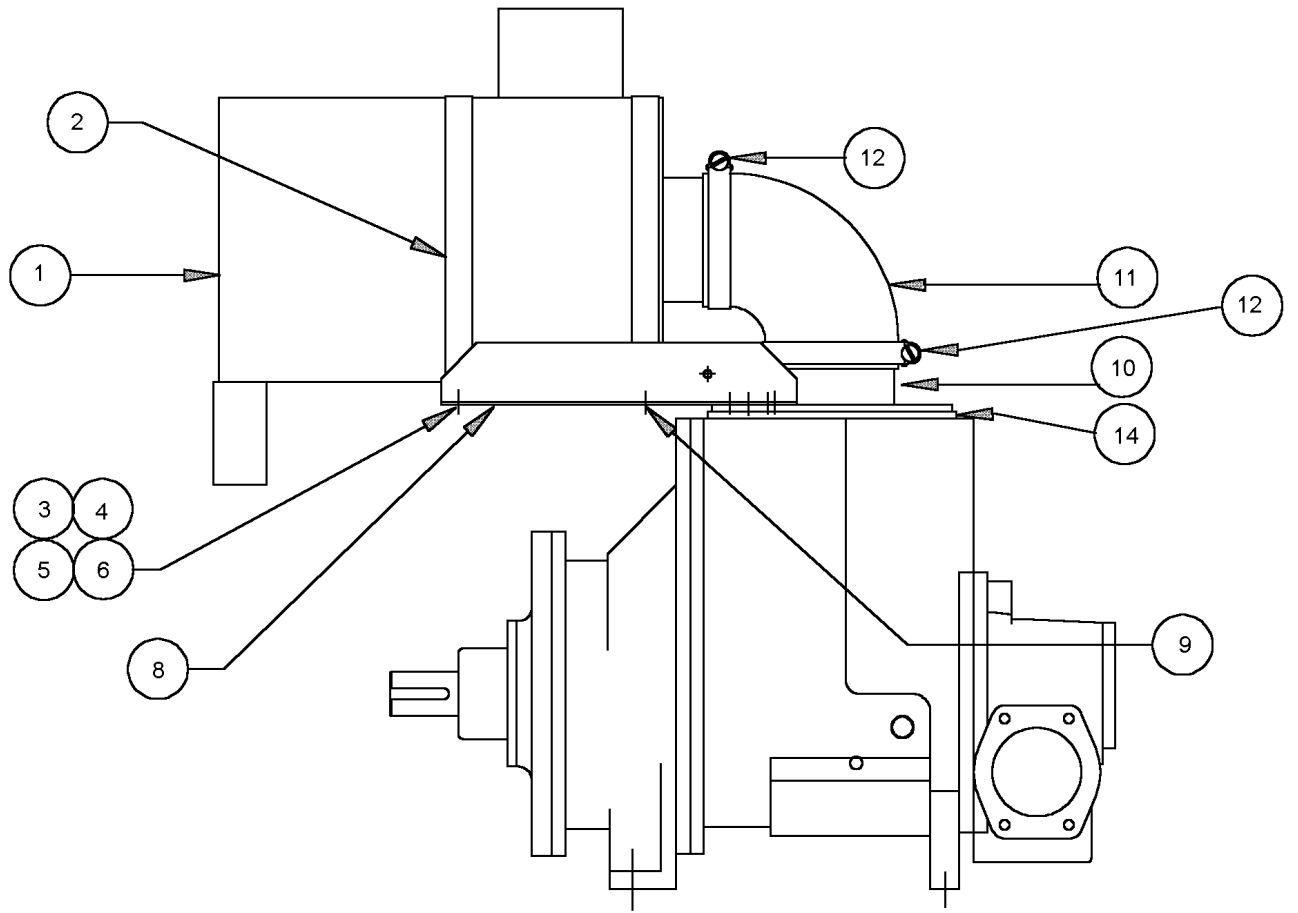
PART NUMBERS

**GROUP NO. 2B AIR RECEIVER/OIL RESERVOIR -
SEPARATOR – OIL PIPING**

STANDARD

REF	PART DESCRIPTION	QTY	STANDARD		
			G69-827-1 29G116-387-3 WE200SSII		
53	NUT	6	04-17		
54	WASHER, LOCK	6	05-49		
55	SCREW, SPECIAL	2	34-1512-2		
56	VALVE, PRESSURE RELIEF	1	15-1262-3		
57	ELBOW, PIPE	1	013-507		
58	BUSHING, PIPE	1	013-1079		
59	PLUG, FILLER	1	182-750-14		
60	GAGE, SIGHT	2	60-453		
61	FITTING	2	H182-383		
62	TUBE	1	55-29-58		
63	TUBE	1	55-29-72		
64	NIPPLE, PIPE	1	013-72		
65	FITTING	2	H182-382		
66	NIPPLE, PIPE	1	013-211		
67	VALVE, MINIMUM PRESSURE/CHECK	1	15-1622		
68	BODY, MINIMUM PRESSURE VALVE	1	Inc. G to H 220-187-1—G		
69	SEAL, O-RING	1	220-187-3		
70	PISTON, LARGE	1	220-187-2		
71	SPRING, LARGE	1	220-187-6		
72	CAP	1	220-187-5		
73	PISTON, SMALL, ASSEMBLY	1	220-187-8		
74	SPRING, SMALL	1	220-187-4		
75	SPACER	1	06-6-1—H		
76	FITTING, FLANGE	1	1A54-857-5		
77	FITTING, COVER	1	54-857		
78	SEAL	2	125-826-51		
79	SCREW, CAP	8	02-949		
80	NIPPLE, PIPE	1	013-231		
81	TEE, PIPE	1	33-1181		
82	NIPPLE, SPECIAL	1	33-178-30		
83	PLUG, PIPE	2	011-204		
84	COUPLING, SPECIAL	1	28-483-7		
85	GASKET	1	Inc. I 220-313-7-1		
86	GAGE, TEMPERATURE	1	GROUP 5		
87	WELL, GAGE	1	GROUP 5		

THIS PAGE LEFT INTENTIONALLY BLANK.



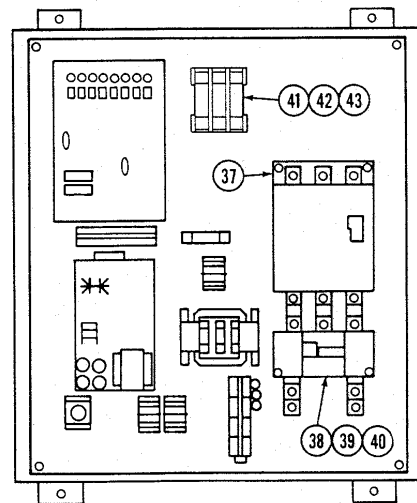
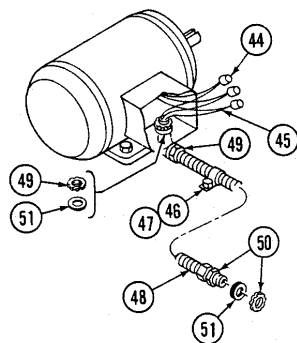
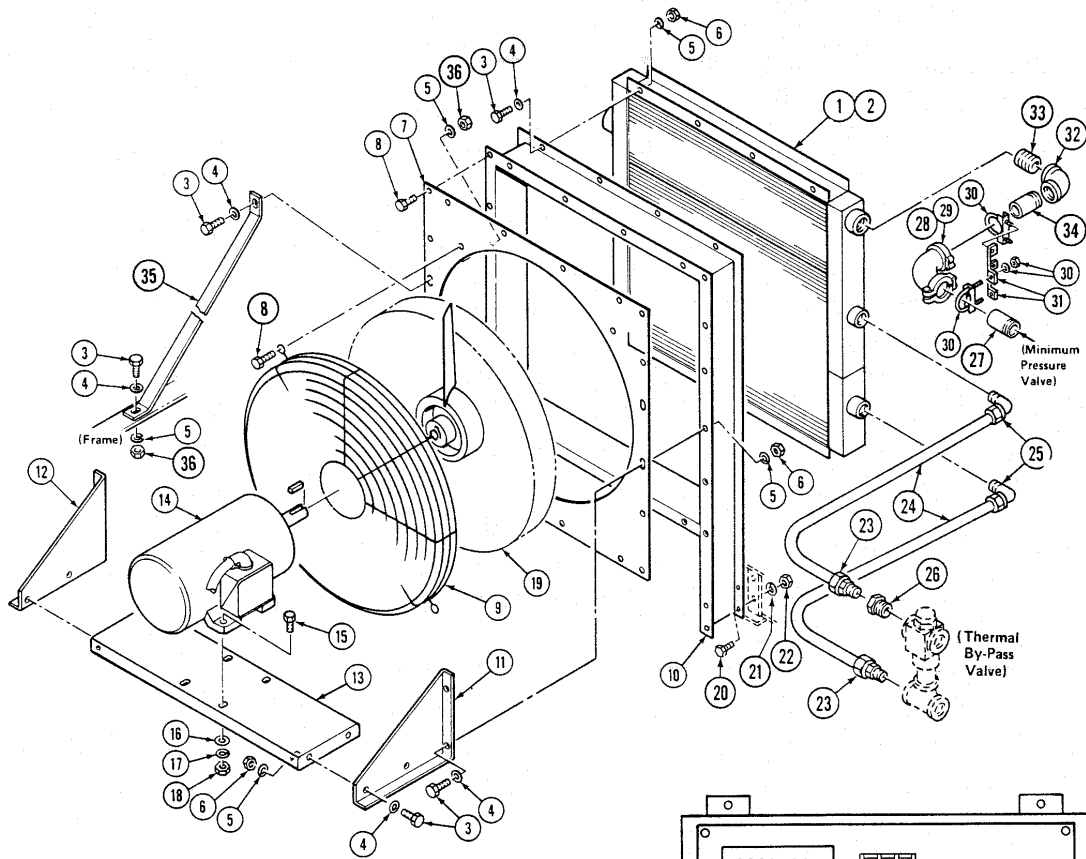
TI00191 ECN 46313

PARTS LIST GROUPS AND COMPONENTS

**MODEL
WE125-150-200SSII**

PART NUMBERS

GROUP NO. 3 AIR CLEANERS - OPTIONAL			OPTIONAL		
REF	PART DESCRIPTION	QTY	10G43-812		
1	AIR CLEANER	1	43-812 Inc. A & B		
	ELEMENT, PRIMARY	1	43-812-1—A		
	ELEMENT, SECONDARY	1	43-812-1—B		
2	CLAMP	2	83-655		
3	SCREW, CAP	4	02-36		
4	WASHER, FLAT	4	06-4		
5	WASHER, LOCK	4	05-51-1		
6	NUT	4	04-103		
8	SUPPORT	1	39-7554		
9	SCREW, CAP	6	02-1014		
10	FITTING, INLET	1	1A54-879		
11	HOSE, ELBOW	1	73-721		
12	CLAMP	2	83-621-12		



2616PB

PARTS LIST GROUPS AND COMPONENTS

MODEL WE125-150SSII			PART NUMBERS			
GROUP NO. 4 OIL COOLER – AIR COOLED WITH AFTERCOOLER			STANDARD	STANDARD	STANDARD	STANDARD
REF	PART DESCRIPTION	QTY	2G71-1061 200 VOLT	3G71-1061 230 VOLT	G71-1061 460 VOLT	1G71-1061 575 VOLT
1	OIL COOLER/AFTERCOOLER ASSEMBLY	1	3A71-1061 Inc. A to B	A71-1061 Inc. A to B	A71-1061 Inc. A to B	1A71-1061 Inc. A to B
2	COOLER	1	71-1061—A	71-1061—A	71-1061—A	71-1061—A
3	SCREW, CAP	8	02-36	02-36	02-36	02-36
4	WASHER, FLAT	8	06-4	06-4	06-4	06-4
5	WASHER, LOCK	8	05-51-1	05-51-1	05-51-1	05-51-1
6	NUT	8	04-103	04-103	04-103	04-103
7	SHROUD	1	201-321	201-321	201-321	201-321
8	SCREW, SPECIAL	16	34-1512	34-1512	34-1512	34-1512
9	GUARD, FAN	1	156-817	156-817	156-817	156-817
8	SCREW, SPECIAL	4	34-1512	34-1512	34-1512	34-1512
10	SUPPORT	1	A39-6502	A39-6502	A39-6502	A39-6502
11	SUPPORT, L.H.	1	39-6504	39-6504	39-6504	39-6504
12	SUPPORT, R.H.	1	39-6505	39-6505	39-6505	39-6505
3	SCREW, CAP	4	02-36	02-36	02-36	02-36
4	WASHER, FLAT	4	06-4	06-4	06-4	06-4
5	WASHER, LOCK	4	05-51-1	05-51-1	05-51-1	05-51-1
6	NUT	4	04-103	04-103	04-103	04-103
13	SUPPORT, MOTOR BASE	1	39-6503	39-6503	39-6503	39-6503
3	SCREW, CAP	4	02-36	02-36	02-36	02-36
4	WASHER, FLAT	4	06-4	06-4	06-4	06-4
5	WASHER, LOCK	4	05-51-1	05-51-1	05-51-1	05-51-1
6	NUT	4	04-103	04-103	04-103	04-103
14	MOTOR	1	H107-698-49	H107-698-40	H107-698-40	H107-698-38
15	SCREW, CAP	4	02-72	02-72	02-72	02-72
16	WASHER, FLAT	4	06-6	06-6	06-6	06-6
17	WASHER, LOCK	4	05-53	05-53	05-53	05-53
18	NUT	4	04-105	04-105	04-105	04-105
19	FAN	1	42-315—B	42-315—B	42-315—B	42-315—B
20	SCREW, CAP	4	02-71	02-71	02-71	02-71
21	WASHER, LOCK	4	05-53	05-53	05-53	05-53
22	NUT	4	04-161	04-161	04-161	04-161
23	FITTING	2	182-436-8	182-436-8	182-436-8	182-436-8
24	TUBE	2	55-2570	55-2570	55-2570	55-2570
25	FITTING, SPECIAL	2	182-435-17	182-435-17	182-435-17	182-435-17
26	BUSHING, PIPE	1	013-1085	013-1085	013-1085	013-1085
27	NIPPLE, SPECIAL	1	33-86-12	33-86-12	33-86-12	33-86-12
28	COUPLING	1	28-483-19 Inc. C	28-483-19 Inc. C	28-483-19 Inc. C	28-483-19 Inc. C
29	GASKET	2	220-313-6-C	220-313-6-C	220-313-6-C	220-313-6-C
30	CLAMP	2	C83-140	C83-140	C83-140	C83-140
31	STRAP	2	39-5195	39-5195	39-5195	39-5195
32	ELBOW, PIPE	1	013-409	013-409	013-409	013-409
33	NIPPLE, PIPE	1	013-9E	013-9E	013-9E	013-9E
34	NIPPLE, SPECIAL	1	33-86-52	33-86-52	33-86-52	33-86-52
35	SUPPORT	1	39-6539	39-6539	39-6539	39-6539
3	SCREW, CAP	2	02-36	02-36	02-36	02-36
5	WASHER, LOCK	2	05-51	05-51	05-51	05-51
4	WASHER, FLAT	2	06-4	06-4	06-4	06-4
36	NUT	2	04-21	04-21	04-21	04-21
37	SWITCH, MAGNETIC	1	76-1083-4	76-1083-3	76-1083-1	76-1083
38	SWITCH, OVERLOAD, RELAY	1	76-1083-34	76-1083-33	76-1083-70	76-1083-27
39	SCREW, SPECIAL	2	34-1201-1	34-1201-1	34-1201-1	34-1201-1
40	WASHER, FLAT	2	06-64	06-64	06-64	06-64
41	BLOCK, FUSE	1	139-279	139-279	139-267	139-267
42	SCREW, SPECIAL	4	34-1407-4	34-1407-4	34-1201	34-1201

PARTS LIST GROUPS AND COMPONENTS

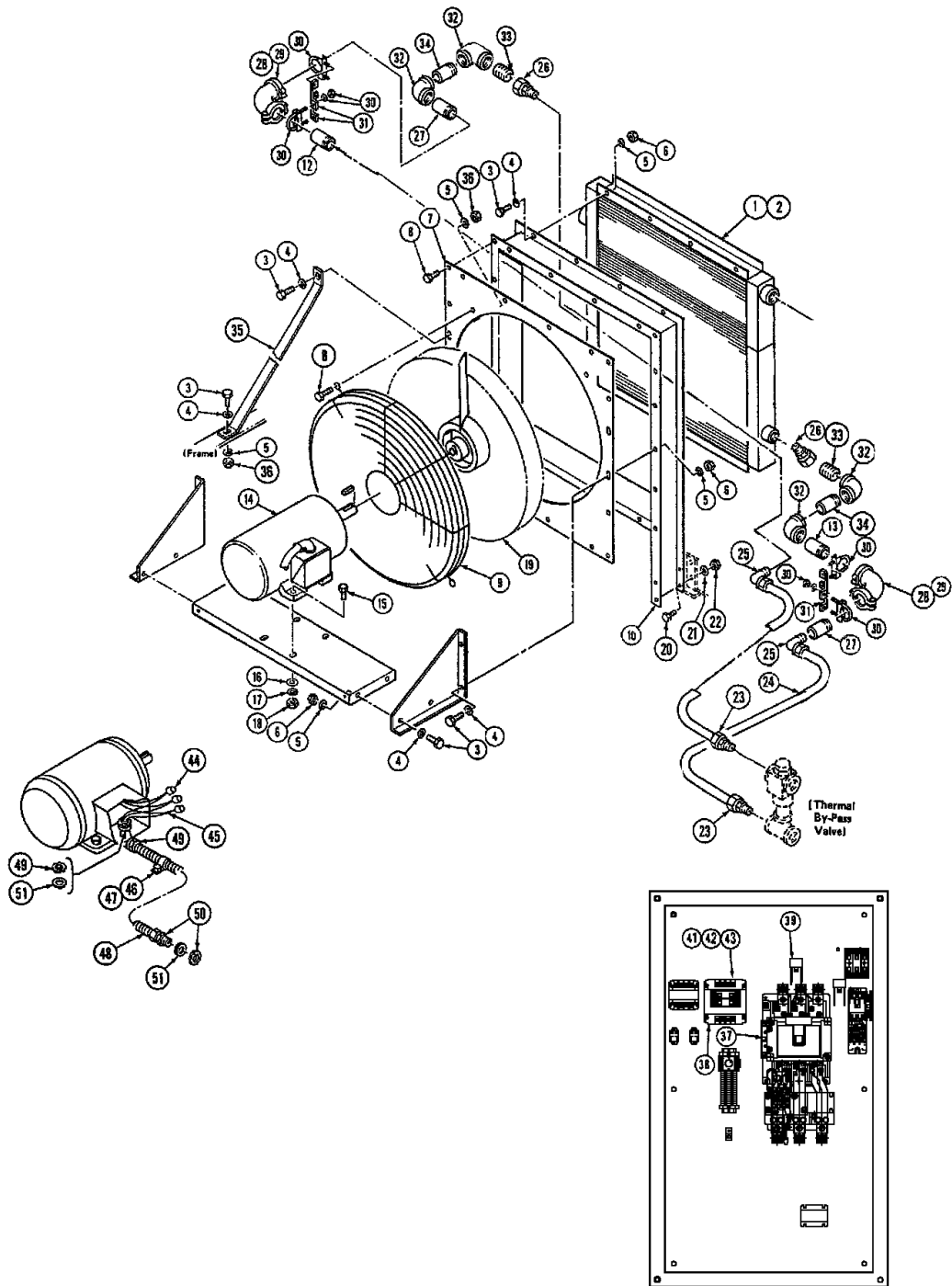
MODEL WE125-150SSII

GROUP NO. 4 OIL COOLER – AIR COOLED WITH
AFTERCOOLER

PART NUMBERS

REF	PART DESCRIPTION	QTY	STANDARD	STANDARD	STANDARD	STANDARD
			4G71-1061 200 VOLT	3G71-1061 230 VOLT	G71-1061 460 VOLT	1G71-1061 575 VOLT
43	FUSE	3	139-277-25	139-277-26	139-277-33	139-268-30
44	NUT, WIRE	3	121-170	121-170	121-170	121-170
45	WIRE	AR	61-888-3	61-888-3	61-888-3	61-888-3
46	CLAMP	2	83-491-4	83-491-4	83-491-4	83-491-4
47	SCREW, SPECIAL	4	34-1512	34-1512	34-1512	34-1512
48	CONDUIT	AR	61-596	61-596	61-596	61-596
49	FITTING, CONDUIT	1	188-94	188-94	188-94	188-94
50	FITTING, CONDUIT	1	188-95	188-95	188-95	188-95
51	SEAL, FITTING	2	125-715	125-715	125-715	125-715
	<u>WE125SSII</u>					
	SEPARATOR, MOISTURE	1	43-1050-2	43-1050-2	43-1050-2	43-1050-2
	SEPARATOR, MOISTURE WITH HEATER	1	A43-1050-2	A43-1050-2	A43-1050-2	A43-1050-2
	SEPARATOR, MOISTURE, LOW PROFILE	1	43-854-3	43-854-3	43-854-3	43-854-3
	SEPARATOR, MOISTURE, LOW PROFILE WITH HEATER	1	A43-854-3	A43-854-3	A43-854-3	A43-854-3
	<u>WE150SSII</u>					
	SEPARATOR, MOISTURE	1	43-1050-3	43-1050-3	43-1050-3	43-1050-3
	SEPARATOR, MOISTURE WITH HEATER	1	A43-1050-3	A43-1050-3	A43-1050-3	A43-1050-3
	SEPARATOR, MOISTURE, LOW PROFILE	1	43-854-4	43-854-4	43-854-4	43-854-4
	SEPARATOR, MOISTURE, LOW PROFILE WITH HEATER	1	A43-854-4	A43-854-4	A43-854-4	A43-854-4

THIS PAGE LEFT INTENTIONALLY BLANK.



TI00192 ECN 46313

PARTS LIST GROUPS AND COMPONENTS

MODEL WE200SSII			PART NUMBERS	
GROUP NO. 4A OIL COOLER – AIR COOLED WITH AFTERCOOLER			STANDARD	STANDARD
REF	PART DESCRIPTION	QTY	3G76-1116 G71-1018 460 VOLT WE200SSII	3G76-1116 7G71-1018 575 VOLT WE200SSII
1	OIL COOLER/AFTERCOOLER ASSEMBLY	1	A71-1018 Inc. A to B	1A71-1018 Inc. A to B
2	COOLER	1	71-1018—A	71-1018—A
3	SCREW, CAP	8	02-36	02-36
4	WASHER, FLAT	8	06-4	06-4
5	WASHER, LOCK	8	05-51-1	05-51-1
6	NUT	8	04-103	04-103
7	SHROUD	1	201-321	201-321
8	SCREW, SPECIAL	16	34-1512	34-1512
9	GUARD, FAN	1	156-817	156-817
8	SCREW, SPECIAL	4	34-1512	34-1512
10	SUPPORT	1	A39-6898	A39-6898
11	SUPPORT, L.H.	1	39-6504	39-6504
12	SUPPORT, R.H.	1	39-6505	39-6505
3	SCREW, CAP	4	02-36	02-36
4	WASHER, FLAT	4	06-4	06-4
5	WASHER, LOCK	4	05-51-1	05-51-1
6	NUT	4	04-103	04-103
14	SUPPORT	1	39-6503	39-6503
3	SCREW, CAP	4	02-36	02-36
4	WASHER, FLAT	4	06-4	06-4
5	WASHER, LOCK	4	05-51-1	05-51-1
6	NUT	4	04-103	04-103
14	MOTOR	1	H107-698-40	H107-698-38
15	SCREW, CAP	4	02-72	02-72
16	WASHER, FLAT	4	06-6	06-6
17	WASHER, LOCK	4	05-53	05-53
18	NUT	4	04-105	04-105
19	FAN	1	42-315—B	42-315--B
20	SCREW, CAP	4	02-71	02-71
21	WASHER, LOCK	4	05-53	05-53
22	NUT	4	04-161	04-161
23	FITTING	2	182-436-9	182-436-9
24	TUBE	2	55-1649	55-1649
25	FITTING, SPECIAL	2	182-435-20	182-435-20
26	BUSHING, PIPE	1	013-1098	013-1098
23	FITTING	1	182-436-9	182-436-9
24	TUBE	1	55-1649	55-1649
25	FITTING, SPECIAL	1	182-435-20	182-435-20
27	NIPPLE, SPECIAL	1	33-86-16	33-86-16
28	COUPLING	1	28-483-19	28-483-19
29	GASKET	2	Inc. C 220-313-6	Inc. C 220-483-6
30	CLAMP	2	C83-140	C83-140
31	STRAP	2	39-5195	39-5195
32	ELBOW	1	013-409	013-409
33	NIPPLE, PIPE	1	013-9E	013-9E
34	NIPPLE, SPECIAL	1	33-86-52	33-86-52
35	SUPPORT	1	39-6539	39-6539
3	SCREW, CAP	2	02-36	02-36
5	WASHER, LOCK	2	05-51-1	05-51-1
4	WASHER, FLAT	2	06-4	06-4
36	NUT	2	04-21	04-21
37	STARTER	1	76-1083-1	76-1083
38	SWITCH, OVERLOAD, RELAY	1	76-1083-70	76-1083-27
39	RC NETWORK	1	34-1201-1	34-1201-1

PARTS LIST GROUPS AND COMPONENTS

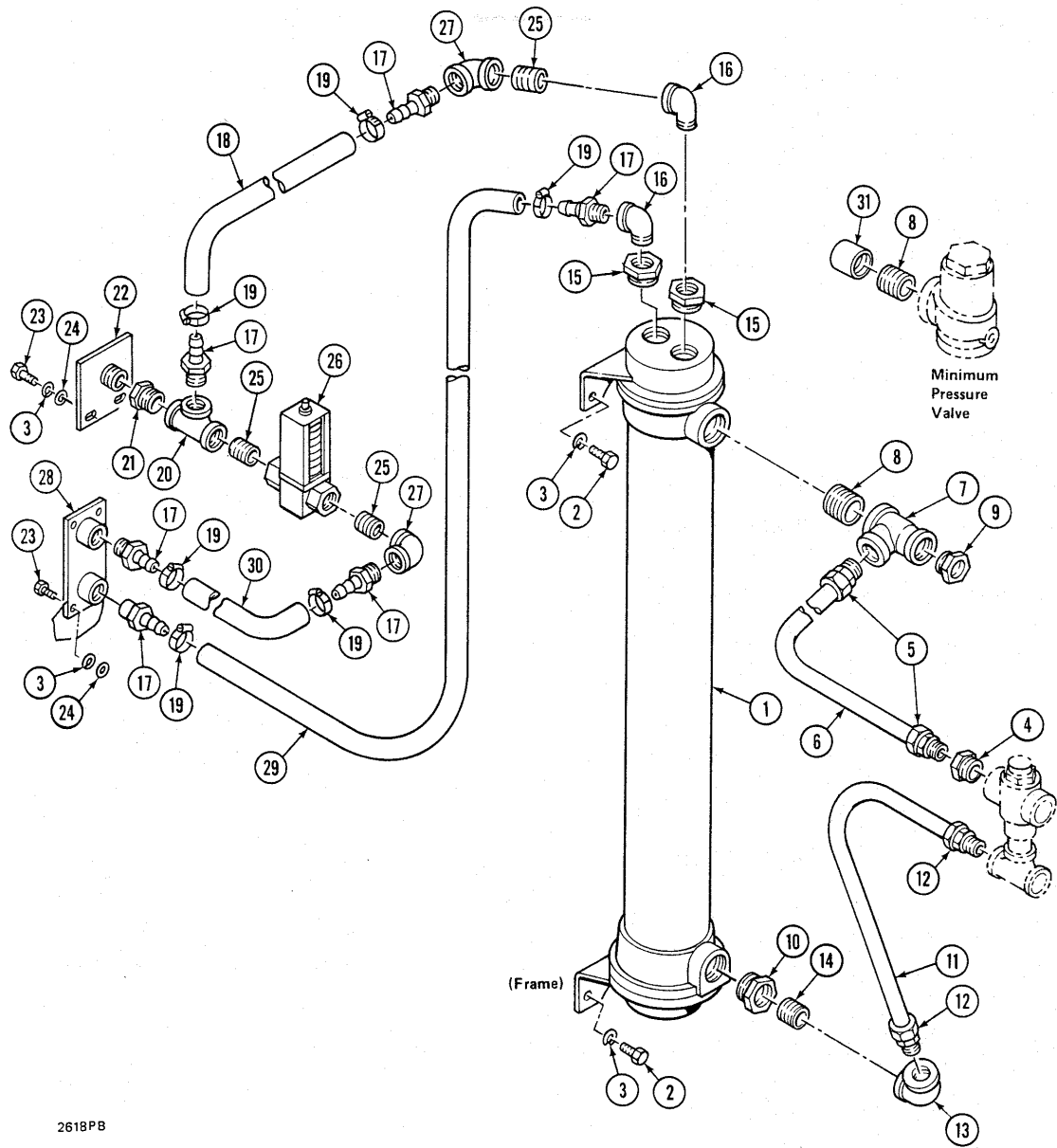
**MODEL
WE200SSII**

PART NUMBERS

**GROUP NO. 4A OIL COOLER – AIR COOLED WITH
AFTERCOOLER**

REF	PART DESCRIPTION	QTY	STANDARD			
			6G71-977 460 VOLT	7G71-977 575 VOLT		
40	WASHER, FLAT	2	06-64	06-64		
41	BLOCK, FUSE	1	139-267	139-267		
42	SCREW, SPECIAL	4	34-1201	34-1201		
43	FUSE	3	139-280-31	139-268-30		
44	NUT, WIRE	3	121-170	121-170		
45	WIRE	AR	61-888-3	61-888-3		
46	CLAMP	3	83-491-4	83-491-4		
47	SCREW, SPECIAL	3	34-1512	34-1512		
48	CONDUIT	AR	61-596	61-596		
49	FITTING, CONDUIT	1	188-94	188-94		
50	FITTING, CONDUIT	1	188-95	188-95		
51	SEAL, FITTING	2	125-715	125-715		

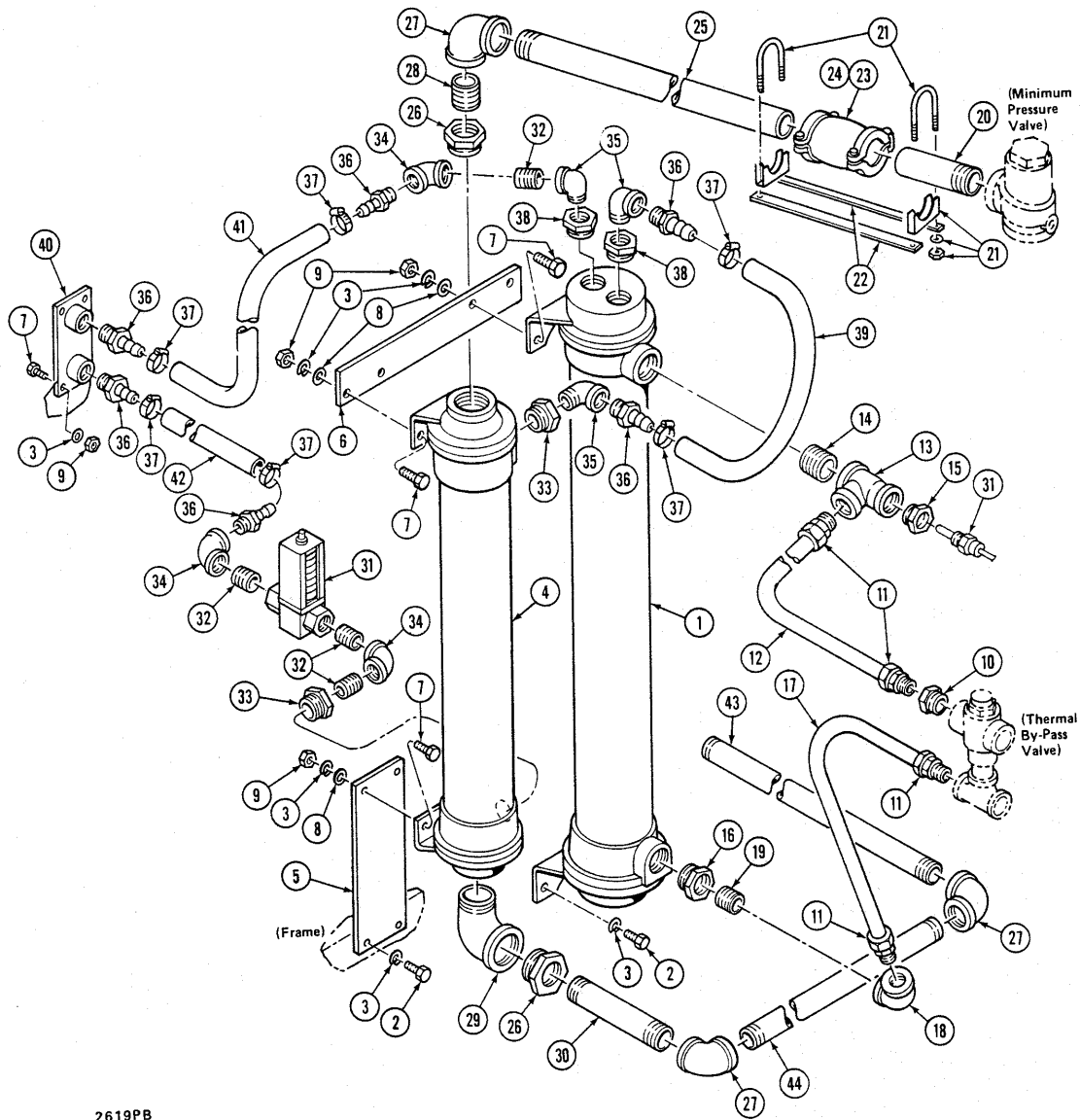
THIS PAGE LEFT INTENTIONALLY BLANK.



2618PB

PARTS LIST GROUPS AND COMPONENTS

MODEL WE125-150-200SSII			PART NUMBERS			
GROUP NO. 5 OIL COOLER – WATER COOLED WITHOUT AFTERCOOLER			STANDARD	STANDARD	STANDARD	STANDARD
REF	PART DESCRIPTION	QTY	4G71-963 WE125SSII WE150SSII UNHOUSED	8G71-963 WE125SSII WE150SSII HOUSED	10G71-963 WE200SSII UNHOUSED	6G71-963 WE200SSII HOUSED
1	COOLER	1	71-963	71-963	71-963	71-963
2	SCREW, SPECIAL	4	H34-1255	H34-1255	H34-1255	H34-1255
3	WASHER, LOCK	4	05-51-1	05-51-1	05-51-1	05-51-1
4	BUSHING, PIPE	1	013-1085	013-1085	013-1085-3	013-1085
5	FITTING	2	182-436-8	182-436-8	182-436-9	182-436-9
6	TUBE	1	55-2572	55-2572	55-1968	55-1968
7	TEE, PIPE	1	013-1690	013-1690	013-1684	013-1684
8	NIPPLE, PIPE	1	013-211	013-211	013-211	013-211
9	BUSHING, PIPE	1	013-1077	013-1077	013-1082	013-1082
10	BUSHING, PIPE	1	013-1091	013-1091	013-1092	013-1092
11	TUBE	1	55-2571	55-2571	55-1967	55-1967
12	FITTING	2	182-436-15	182-436-15	182-436-9	182-436-9
13	ELBOW, PIPE	1	013-407	013-407	013-408	013-408
14	NIPPLE, PIPE	1	013-7B	013-7B	013-8E	013-8E
15	BUSHING, PIPE	1	013-1084-3	013-1090-3	013-1091	013-1091
16	ELBOW, PIPE	1	013-506-3	013-506-3	013-507-3	013-507-3
17	NIPPLE, SPECIAL	2	33-1187	33-1187	33-1018	33-1018
18	HOSE	1	73-51-27	73-51-27	73-351-4	73-351-4
19	CLAMP	2	83-621-1	83-621-1	83-621-1	83-621-1
20	TEE, PIPE	1	013-606-3	013-606-3	013-607-3	013-607-3
21	BUSHING, PIPE	1			013-1079	013-1079
22	SUPPORT, VALVE	1	A39-6396	A39-6396	A39-6396	A39-6396
23	SCREW, CAP	2	02-37	02-37	02-37	02-37
24	WASHER, FLAT	2	06-4	06-4	06-4	06-4
3	WASHER, LOCK	2	05-51	05-51-1	05-51-1	05-51-1
25	NIPPLE, PIPE	3	013-151-3	013-151-3	013-27-3	013-27-3
26	VALVE, WATER FLOW	1	15-1224-3	15-1224-3	15-1224	15-1224
27	ELBOW, PIPE	2	013-406-3	013-406-3	013-407-3	013-407-3
15	BUSHING, PIPE	1	013-1084-3	013-1090-3	013-1091-3	013-1091-3
16	ELBOW, PIPE	1	013-506-3	013-506-3	013-507-3	013-507-3
28	NIPPLE, SPECIAL	1		A33-1146-5		A33-1146-6
23	SCREW, CAP	2		02-37		02-37
24	WASHER, FLAT	2		06-4		06-4
3	WASHER, LOCK	2		05-51-1		05-51-1
17	NIPPLE, SPECIAL	4		33-1187		33-1018
19	CLAMP	4		83-621-1		83-621-1
29	HOSE	1		73-51-28		73-351-3
30	HOSE	1		73-51-20		73-351-4
25	NIPPLE, PIPE	1		013-151-3		013-27-3
27	ELBOW, PIPE	1		013-406-3		013-407-3
8	NIPPLE, PIPE	1				013-211
31	COUPLING	1				013-744
	GAGE, TEMPERATURE ILLUSTRATED IN GROUP 2 OR 2A	1	60-464	60-464	60-464	60-464
	WELL, GAGE ILLUSTRATED IN GROUP 2 OR 2A	1	60-464-1	60-464-1	60-464-1	60-464-1



2619PB

PARTS LIST GROUPS AND COMPONENTS

MODEL WE125-150-200SSII			PART NUMBERS			
GROUP NO. 5A OIL COOLER – WATER COOLED WITH AFTERCOOLER			STANDARD	STANDARD	STANDARD	STANDARD
REF	PART DESCRIPTION	QTY	7G71-963 WE125SSII WE150SSII UNHOUSED	3G71-963 WE125SSII WE150SSII HOUSED	9G71-963 WE200SSII UNHOUSED	5G71-963 WE200SSII HOUSED
1	COOLER	1	71-963	71-963	71-963	71-963
2	SCREW, SPECIAL	4	H34-1255	H34-1255	H34-1255	H34-1255
3	WASHER, LOCK	4	05-51-1	05-51-1	05-51-1	05-51-1
4	AFTERCOOLER	1	71-979	71-979	71-991	71-991
5	SUPPORT, COOLER	1	39-6543	39-6543	39-6960	39-6960
6	BRACKET, COOLER	1	39-6544	39-6544	39-6961	39-6961
2	SCREW, SPECIAL	2	H34-1255	H34-1255	H34-1255	H34-1255
7	SCREW, CAP	6	02-37	02-37	02-37	02-37
8	WASHER, FLAT	6	06-4	06-4	06-4	06-4
3	WASHER, LOCK	8	05-51-1	05-51-1	05-51-1	05-51-1
9	NUT	6	04-103	04-103	04-103	04-103
10	BUSHING, PIPE	1	013-1085	013-1085		
11	FITTING	2	182-436-8	182-436-8	182-436-9	182-436-9
12	TUBE	1	55-2572	55-2572	55-1968	55-1968
13	TEE, PIPE	1	013-1690	013-1690	013-1684	013-1684
14	NIPPLE, PIPE	1	013-211	013-211	013-211	013-211
15	BUSHING, PIPE	1	013-1077	013-1077	013-1082	013-1082
16	BUSHING, PIPE	1	013-1091	013-1091	013-1092	013-1092
17	TUBE	1	55-2571	55-2571	55-1967	55-1967
11	FITTING	2	182-436-8	182-436-8	182-436-9	182-436-9
18	ELBOW, PIPE	2	013-407	013-407	013-408	013-408
19	NIPPLE, PIPE	1	013-7B	013-7B	013-8E	013-8E
20	NIPPLE, SPECIAL	1	33-86-16	33-86-16	33-86-16	33-86-16
21	CLAMP	2	C83-140	C83-140	C83-140	C83-140
22	SUPPORT	2	39-6030	39-6030	39-6030	39-6030
23	COUPLING, SPECIAL	1	28-483-6 Inc. A	28-483-6 Inc. A	28-483-6 Inc. A	28-483-6 Inc. A
24	GASKET	2	220-313-6	220-313-6	220-313-6	220-313-6
25	NIPPLE, SPECIAL	1	33-86-113	33-86-113	33-86-113	33-86-113
26	BUSHING, PIPE	1	013-1098	013-1098	013-1104	013-1104
27	ELBOW, PIPE	1	013-409	013-409	013-409	013-409
28	NIPPLE, PIPE	1	013-9	013-9	013-9	013-9
29	ELBOW, PIPE	1	013-510	013-510	013-511	013-511
26	BUSHING, PIPE	1	013-1098	013-1098	013-1105	013-1105
27	ELBOW, PIPE	1	013-409	013-409	013-410	013-410
30	NIPPLE, PIPE	1	013-219	013-219	013-237	013-237
31	VALVE, WATER FLOW	1	15-1224-3	15-1224-3	15-1224	15-1224
32	NIPPLE, PIPE	3	013-151-3	013-151-3	013-27-3	013-27-3
33	BUSHING, PIPE	1	013-1084-3	013-1084-3	013-1091-3	013-1091-3
34	ELBOW, PIPE	1	013-406-3	013-406-3	013-407-3	013-407-3
33	BUSHING, PIPE	1	013-1091	013-1091	013-1091	013-1091
35	ELBOW, PIPE	1	013-506-3	013-506-3	013-507-3	013-507-3
36	NIPPLE, SPECIAL	2	33-1187	33-1187	33-1018	33-1018
37	CLAMP	2	83-621-1	83-621-1	83-621-1	83-621-1
35	ELBOW, PIPE	1	013-506-3	013-506-3	013-507-3	013-507-3
38	BUSHING, PIPE	2	013-1084-3	013-1084-3		
39	HOSE	1	73-51-2	73-51-2	73-315-2	73-315-2
35	ELBOW, PIPE	1	013-506-3	013-506-3	013-507-3	013-507-3
40	NIPPLE ASSEMBLY, SPECIAL	1		A33-1146-5		A33-1146-6
36	NIPPLE, SPECIAL	4		33-1187		33-1018
37	CLAMP	4		83-621-1		83-621-1
41	HOSE	1		73-51-28		73-351-3
42	HOSE	1		73-51-20		73-351-4
32	NIPPLE, PIPE	1		013-151-3		013-27-3

PARTS LIST GROUPS AND COMPONENTS

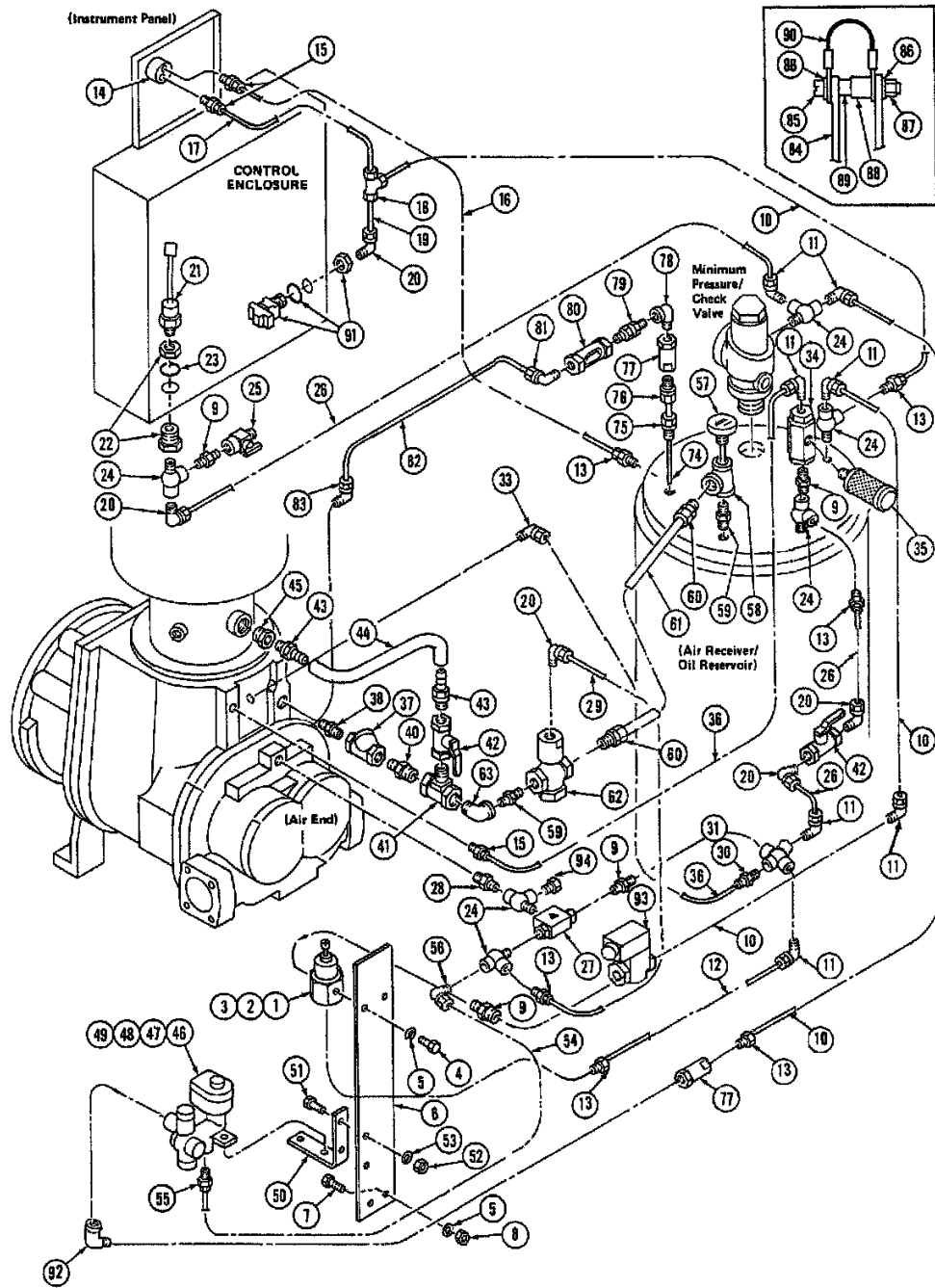
MODEL
WE125-150-200SSII

**GROUP NO. 5A OIL COOLER – WATER COOLED
WITH AFTERCOOLER**

PART NUMBERS

REF	PART DESCRIPTION	QTY	STANDARD			
			STANDARD	STANDARD	STANDARD	STANDARD
			7G71-963 WE125SSII WE150SSII UNHOUSED	3G71-963 WE125SSII WE150SSII HOUSED	9G71-963 WE200SSII UNHOUSED	5G71-963 WE200SSII HOUSED
34	ELBOW, PIPE	2		013-406-3		013-407-3
27	ELBOW, PIPE	1		013-409		013-410
43	NIPPLE, PIPE	1		33-86-94		33-178-63
44	NIPPLE, SPECIAL	1		33-86-48		33-178-24
	GAGE, TEMPERATURE	1	60-464	60-464	60-464	60-464
	ILLUSTRATED IN GROUP 2 OR 2A					
	WELL, GAGE	1	60-464-1	60-464-1	60-464-1	60-464-1
	ILLUSTRATED IN GROUP 2 OR 2A					

THIS PAGE LEFT INTENTIONALLY BLANK.



TI00193 ECN 46313

PARTS LIST GROUPS AND COMPONENTS

MODEL
WE125-150-200SSII

PART NUMBERS

**GROUP NO. 6 CONTROLS – CONTROL PIPING -
WITHOUT BYPASS CONTROL**

			STANDARD		
REF	PART DESCRIPTION	QTY	105G15-1580		
1	VALVE, CONTROL PRESSURE REGULATOR	1	15-1580 Inc. A & B		
2	SEAT	1	220-153-2—A		
3	DIAPHRAGM	1	220-153-3—B		
4	SCREW, CAP	1	02-33		
5	WASHER, LOCK	1	05-51-1		
6	SUPPORT	1	39-7019		
7	SCREW, CAP	2	02-36		
8	NUT	2	04-103		
5	WASHER, LOCK	2	05-51		
9	FITTING	4	182-906		
10	TUBE	2	55-1654-22		
11	FITTING	3	H182-383		
12	TUBE	1	55-1654-13		
13	FITTING	2	H182-382		
14	SWITCH, RESTRICTION INDICATOR	1	60-471		
15	FITTING	2	H182-358		
16	TUBE	1	55-29-94		
13	FITTING	2	H182-382		
17	TUBE	1	55-1654		
18	FITTING	1	H182-397		
10	TUBE	1	55-1654-22		
19	TUBE	1	55-1654-14		
20	FITTING	4	H182-393		
21	TRANSDUCER, PRESURE	1	A76-1096 Inc. C to D		
	TRANSDUCER, PRESSURE	1	76-1096—C		
	FITTING, CONNECTOR	1	121-228		
22	FITTING	1	182-818—D		
23	SEAL	1	125-715		
24	FITTING	3	182-849		
25	VALVE, DRAIN	1	15-338		
11	FITTING	2	H182-383		
26	TUBE	1	55-1654-5		
27	VALVE, SHUTTLE CHECK	1	15-1658		
24	FITTING	2	182-849		
28	FITTING	1	182-775-1		
13	FITTING	1	H182-382		
29	TUBE	1	55-1654-2		
11	FITTING	1	H182-383		
30	FITTING	1	182-228		
31	ORIFICE	1	206-8-4		
32	TUBE	1	55-29-64		
33	FITTING	1	H182-393		
34	VALVE, BLOW DOWN	1	15-1717		
35	MUFFLER	1	78-246		
11	FITTING	1	H182-383		
36	TUBE	1	55-1654-18		
15	FITTING	1	H182-358		
37	VALVE, CHECK	1	15-1646-4		
38	FITTING	1	182-775-2		
39	BUSHING, PIPE	1	013-1072		
40	FITTING	1	182-906-3		
41	FITTING	1	182-947		
42	VALVE	1	H15-1292-1		
43	FITTING	2	187-945		

PARTS LIST GROUPS AND COMPONENTS

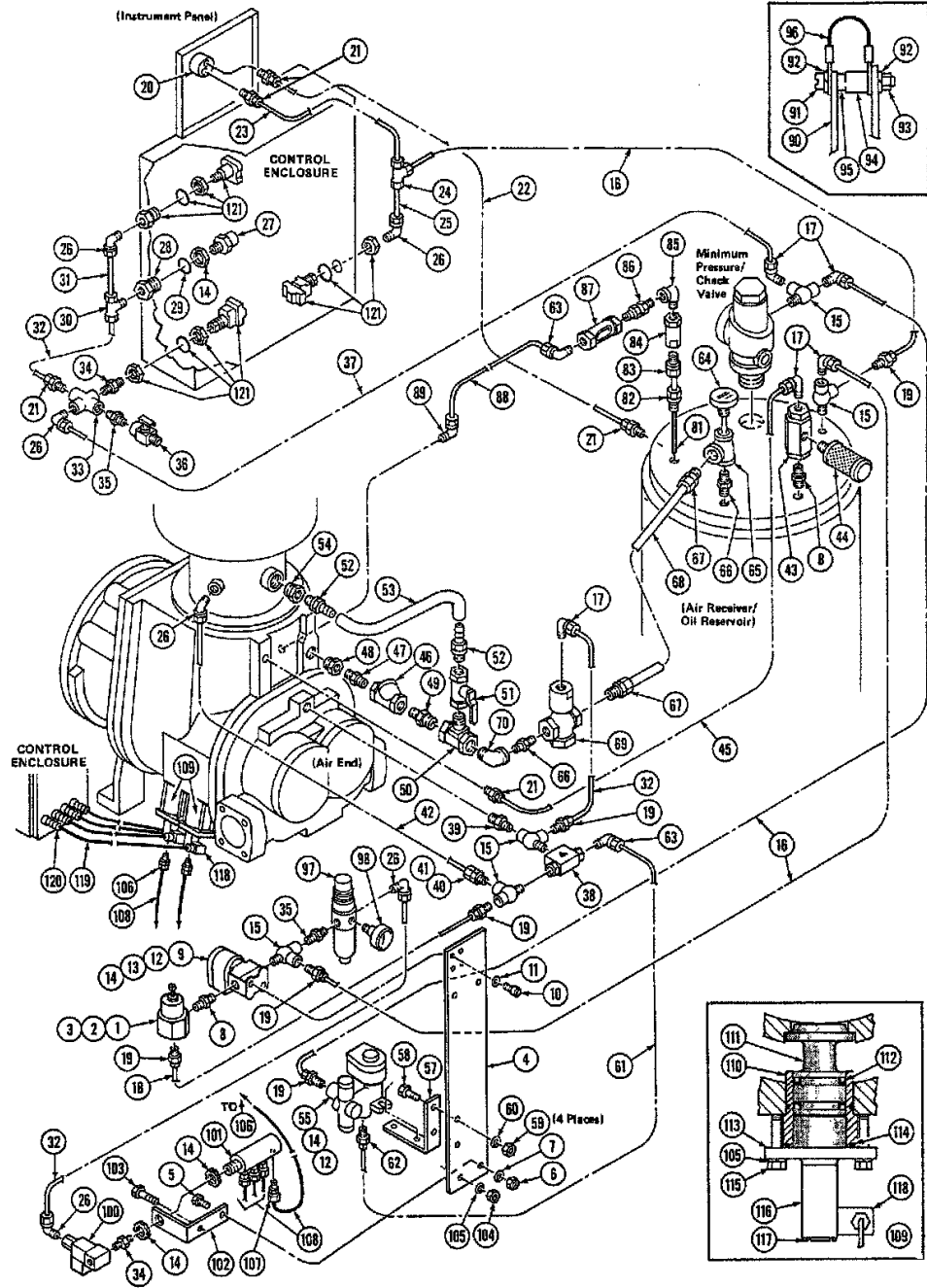
MODEL
WE125-150-200SSII

PART NUMBERS

**GROUP NO. 6 CONTROLS – CONTROL PIPING -
WITHOUT BYPASS CONTROL**

REF	PART DESCRIPTION	QTY	STANDARD		
			105G15-1580		
44	HOSE	1	73-952-1		
45	BUSHING, PIPE	1	013-1073		
46	VALVE, SOLENOID, SV1	1	15-1820		
47	NIPPLE, PIPE	1	013-4		
48	NUT, SPECIAL	1	53-261-1		
49	FITTING	1	188-121		
50	SUPPORT	1	39-7016		
51	SCREW, CAP	4	02-6		
52	NUT	4	04-101		
53	WASHER, LOCK	4	05-49		
13	FITTING	1	H182-382		
54	TUBE	1	55-48-41		
55	FITTING	1	H182-381		
56	FITTING	1	H182-356		
10	TUBE	2	55-1654-22		
57	PLUG	1	011-102		
58	TEE, PIPE	1	013-1614		
59	FITTING	1	182-906-3		
60	FITTING	2	182-436-6		
61	TUBE	1	55-2573		
62	VALVE, PILOT OPERATED	1	15-1823-6		
59	FITTING	1	182-906-3		
63	ELBOW, PIPE	1	013-505		
64	TUBE	1	55-1654-1		
11	FITTING	1	H182-383		
24	FITTING	1	182-849		
65	VALVE, PILOT OPERATED	1	15-1823-2		
38	FITTING	1	182-906-6		
66	TEE, PIPE	1	013-1604		
67	FITTING	1	182-703		
68	FITTING	1	182-435-13		
69	TUBE	1	55-2508-5		
70	FITTING	1	182-436-13		
71	FILTER	1	43-985		
72	ELBOW, PIPE	1	013-504		
73	NIPPLE, PIPE	1	013-24		
74	TUBE	AR	55-2508-4		
75	FITTING	1	182-405-2		
76	FITTING	1	182-436		
77	FILTER	1	43-721		
78	FITTING	1	182-908		
79	VALVE, CHECK	1	15-1703		
80	GAGE, SIGHT	1	60-453		
81	FITTING	1	182-381		
82	TUBE	1	55-48-47		
83	FITTING	1	182-381		
84	BOARD, PRINTED CIRCUIT	1	76-1093-2		
85	SCREW, SPECIAL	4	03-75		
86	WASHER, LOCK	8	05-152		
87	NUT	4	04-11		
88	ISOLATOR, VIBRATION	4	74-249		
89	SPACER	4	22-1294		
90	WIRE ASSEMBLY	2	A61-888-2		
91	PRESSURE SWITCH	1	76-1288		
92	ELBOW	1	182-467-1		
93	VALVE, SOLENOID	1	15-1807		
94	PLUG	1	011-2		

THIS PAGE LEFT INTENTIONALLY BLANK.



PARTS LIST GROUPS AND COMPONENTS

**MODEL
WE125-150-200SSII**

PART NUMBERS

**GROUP NO. 6A CONTROLS – CONTROL PIPING -
WITH BYPASS CONTROL**

STANDARD

REF	PART DESCRIPTION	QTY	106G15-1580
1	VALVE, CONTROL PRESSURE REGULATOR	1	15-1580 Inc. A & B
2	SEAT	1	220-153-2—A
3	DIAPHRAGM	1	220-153-3—B
4	BRACKET	1	39-7019
5	SCREW, CAP	2	02-36
6	NUT	2	04-103
7	WASHER, LOCK	2	05-51
8	FITTING	2	182-906
9	VALVE, SOLENOID SV6	1	15-1807
10	SCREW, SPECIAL	2	03-129
11	WASHER, LOCK	2	05-103
12	FITTING, CONDUIT	1	188-121
13	NIPPLE, PIPE	1	013-4B
14	NUT, LOCK	2	53-261-1
15	FITTING	3	182-849
16	TUBE	1	55-1654-22
17	FITTING	1	H182-383
18	TUBE	1	55-1654-13
19	FITTING	2	H182-382
20	SWITCH, RESTRICTION INDICATOR	1	60-471
21	FITTING	2	H182-358
22	TUBE	1	55-29-94
19	FITTING	2	H182-382
23	TUBE	1	55-1654
24	FITTING	1	H82-397
16	TUBE	1	55-1654-22
25	TUBE	1	55-1654-14
26	FITTING	1	H182-393
27	TRANSDUCER, PRESSURE	1	A76-1096 Inc. C to D
	TRANSDUCER, PRESSURE	1	76-1096—C
	FITTING, CONNECTOR	1	121-228
28	FITTING	1	182-818—D
29	SEAL	1	125-715
30	FITTING	1	182-817
31	TUBE	1	55-1654-19
26	FITTING	2	H182-393
32	TUBE	1	55-1654-2
21	FITTING	1	H182-358
33	FITTING, SPECIAL	1	54-101
34	FITTING	1	182-906-2
35	FITTING	1	182-725
36	VALVE, DRAIN	1	15-338
17	FITTING	1	H182-383
37	TUBE	1	55-1654-5
38	VALVE, SHUTTLE CHECK	1	15-1658
15	FITTING	2	182-849
39	FITTING	1	182-775-1
19	FITTING	1	H182-382
32	TUBE	1	55-1654-2
17	FITTING	1	H182-383
40	FITTING	1	182-228
41	ORIFICE, CONTROL BLEED	1	206-8-4
42	TUBE	1	55-29-64
26	FITTING	1	H182-393
43	VALVE, BLOW DOWN	1	15-1717

PARTS LIST GROUPS AND COMPONENTS

MODEL
WE125-150-200SSII

PART NUMBERS

**GROUP NO. 6A CONTROLS – CONTROL PIPING -
WITH BYPASS CONTROL**

STANDARD

REF	PART DESCRIPTION	QTY	106G15-1580
9	FITTING	1	182-906
44	MUFFLER	1	78-246
17	FITTING	1	H182-383
45	TUBE	1	55-1654-18
21	FITTING	1	H182-358
46	VALVE, CHECK	1	15-1762
47	FITTING	1	182-906-6
48	BUSHING, PIPE	1	013-1072
49	FITTING	1	182-775
50	FITTING	1	182-947
51	VALVE	1	H15-1292-1
52	FITTING	2	182-945
53	HOSE	1	73-952-1
54	BUSHING, PIPE	1	013-1073
55	VALVE, SOLENOID SV1	1	15-1820
14	NUT, SPECIAL	1	53-261-1
12	FITTING, SPECIAL	2	188-121
57	SUPPORT	1	39-7016
58	SCREW, CAP	4	02-6
59	NUT	4	04-101
60	WASHER, LOCK	4	05-49
19	FITTING	1	H182-382
61	TUBE	1	55-48-41
62	FITTING	1	H182-381
63	FITTING	1	H182-356
17	FITTING	1	H182-383
16	TUBE	1	55-1654-22
64	GAGE, TEMPERATURE	1	60-449
65	TEE, PIPE	1	013-1614
66	FITTING	1	182-906-3
67	FITTING	2	182-436-6
68	TUBE	1	55-2573
69	VALVE, SOLENOID	1	15-1823-6
66	FITTING	1	182-906-3
70	ELBOW, PIPE	1	013-505
81	TUBE	AR	55-2508-4
82	FITTING	1	182-405-2
83	FITTING	1	182-436
84	FILTER	1	43-721
85	FITTING	1	182-908
86	VALVE, CHECK	1	15-1703
87	GAGE, SIGHT	1	60-453
63	FITTING	1	H182-356
88	TUBE	1	55-48-47
89	FITTING	1	H182-357
90	BOARD, PRINTED CIRCUIT	1	76-1093-2
91	SCREW, SPECIAL	4	03-75
92	WASHER, LOCK	8	05-152
93	NUT	4	04-11
94	ISOLATOR, VIBRATION	4	74-249
95	SPACER	4	22-1294
96	WIRE ASSEMBLY	2	A61-888-2
97	VALVE, PRESSURE REDUCING, WITH FILTER	1	116-425
35	FITTING	1	182-725
98	GAGE, PRESSURE	1	60-619
26	FITTING	2	182-393

PARTS LIST GROUPS AND COMPONENTS

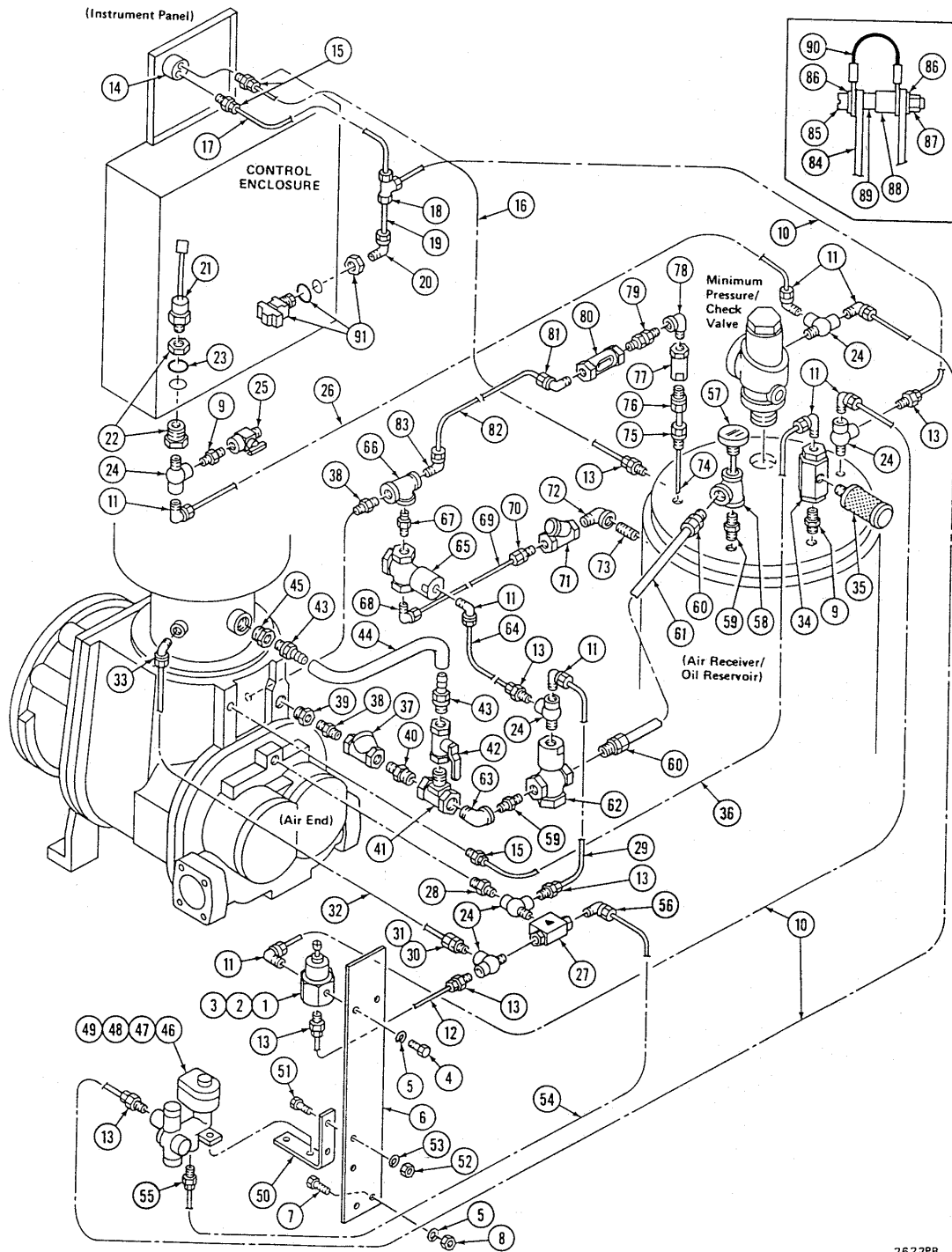
**MODEL
WE125-150-200SSII**

PART NUMBERS

**GROUP NO. 6A CONTROLS – CONTROL PIPING -
WITH BYPASS CONTROL**

STANDARD

REF	PART DESCRIPTION	QTY	106G15-1580		
32	TUBE	1	55-1654-2		
100	VALVE, SOLENOID, SV8	1	15-1891		
34	FITTING	1	182-906-2		
101	MANIFOLD	1	10-485		
102	SUPPORT	1	39-6889		
103	SCREW, CAP	1	02-20		
104	NUT	1	04-102		
105	WASHER, LOCK	1	05-50-1		
14	NUT, SPECIAL	2	53-261-1		
106	FITTING	4	182-926		
107	FITTING	4	182-927		
108	TUBE	4	55-133-3		
109	CYLINDER, BYPASS VALVE	4	A1-868 Inc. E to F		
110	CYLINDER	1	1-868—E		
111	PISTON/VALVE	1	8-861		
112	SEAL, PISTON	1	125-928-22		
113	COVER	1	14-1795		
114	SEAL, O-RING	1	125-826-53		
105	WASHER, LOCK	4	05-50-1		
115	SCREW, CAP	4	34-1364-15		
116	VALVE, SOLENOID	4	15-1774		
117	SCREW, SPECIAL	8	03-34		
118	VALVE, SOLENOID	4	15-1774-1		
119	WIRE	AR	61-918		
120	FITTING, CONDUIT	4	188-144		
121	TRANSDUCER, SWITCHES	AR	SEE GROUP 6C		



2622PB

PARTS LIST GROUPS AND COMPONENTS

MODEL
WE125-150-200SSII

PART NUMBERS

**GROUP NO. 6B CONTROLS – CONTROL PIPING -
LEAD/LAG WITHOUT BYPASS CONTROL**

STANDARD

REF	PART DESCRIPTION	QTY	107G15-1580
1	VALVE, CONTROL PRESSURE REGULATOR	1	15-1580 Inc. A & B
2	SEAT	1	220-153-2—A
3	DIAPHRAGM	1	220-153-3—B
4	SCREW, CAP	1	02-33
5	WASHER, LOCK	1	05-51-1
6	SUPPORT	1	39-7019
7	SCREW, CAP	2	02-36
8	NUT	2	04-103
5	WASHER, LOCK	2	05-51
9	FITTING	1	182-906
10	TUBE	1	55-1654-22
11	FITTING	3	H182-383
12	TUBE	1	55-1654-13
13	FITTING	2	H182-382
14	SWITCH, INDICATOR	1	60-471
15	FITTING	2	H182-358
16	TUBE	1	55-29-94
13	FITTING	2	H182-382
17	TUBE	1	55-1654
18	FITTING	1	H182-397
10	TUBE	1	55-1654-22
19	TUBE	1	55-1654-14
20	FITTING	1	H182-393
21	TRANSDUCER, PRESSURE	1	A76-1096 Inc. C to D
	TRANSDUCER, PRESSURE	1	76-1096—C
	FITTING, CONNECTOR	1	121-228
22	FITTING	1	182-818—D
23	SEAL	1	125-715
24	FITTING	2	182-849
9	FITTING	1	182-906
25	VALVE, DRAIN	1	15-338
11	FITTING	2	H182-383
26	TUBE	1	55-1654-5
27	VALVE, SHUTTLE CHECK	1	15-1658
24	FITTING	2	182-849
28	FITTING	1	182-775-1
13	FITTING	1	H182-382
29	TUBE	1	55-1654-2
11	FITTING	1	H182-383
31	ORIFICE, CONTROL BLEED	1	206-8
32	TUBE	1	55-29-64
33	FITTING	1	H182-393
34	VALVE, BLOW DOWN	1	15-1717
9	FITTING	1	182-906
35	MUFFLER	1	78-246
11	FITTING	1	H182-383
36	TUBE	1	55-1654-18
15	FITTING	1	H182-358
37	VALVE, CHECK	1	15-1646-2
38	FITTING	1	182-906-6
39	BUSHING, PIPE	1	013-1072
40	FITTING	1	182-775
41	FITTING	1	182-947
42	VALVE	1	H15-1292-1

PARTS LIST GROUPS AND COMPONENTS

**MODEL
WE125-150-200SSII**

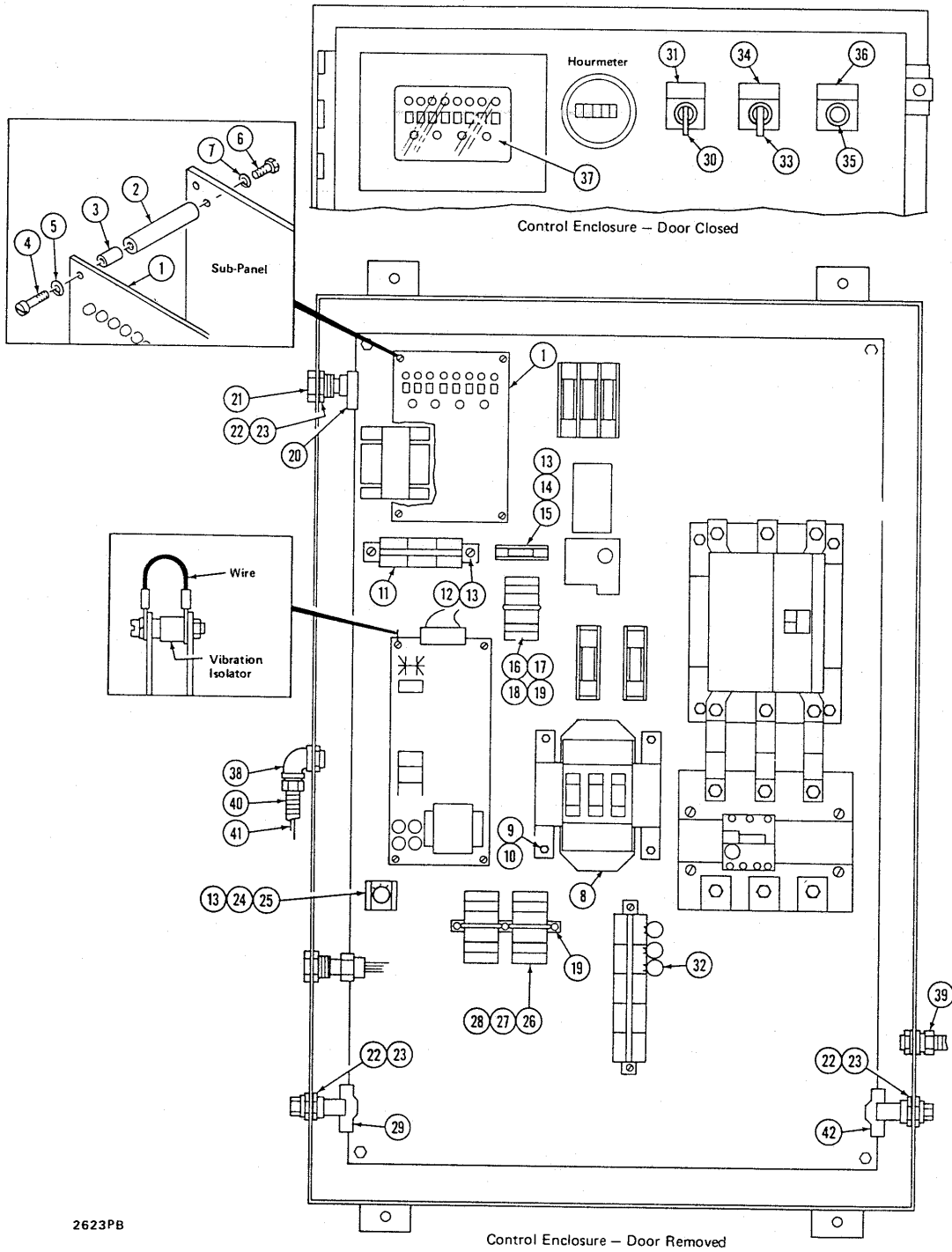
PART NUMBERS

**GROUP NO. 6B CONTROLS – CONTROL PIPING -
LEAD/LAG WITHOUT BYPASS CONTROL**

STANDARD

REF	PART DESCRIPTION	QTY	107G15-1580		
43	FITTING	2	182-945		
44	HOSE	1	73-952-1		
45	BUSHING, PIPE	1	013-1073		
46	VALVE, SOLENOID, SV1	1	15-1820		
47	NIPPLE, PIPE	1	013-4B		
48	NUT, SPECIAL	1	53-261-1		
49	FITTING, SPECIAL	1	188-121		
50	SUPPORT	1	39-7016		
51	SCREW, CAP	4	02-6		
52	NUT	4	04-101		
53	WASHER, LOCK	4	05-49		
13	FITTING	1	H182-382		
54	TUBE	1	55-48-41		
55	FITTING	1	H182-381		
56	FITTING	1	H182-356		
10	TUBE	1	55-1654-22		
57	THERMOMETER	1	60-449		
58	TEE, PIPE	1	013-1614		
59	FITTING	1	182-906-3		
60	FITTING	2	182-436-6		
61	TUBE	1	55-2573		
62	VALVE, PILOT OPERATED	1	15-1823-6		
59	FITTING	1	182-906-3		
63	ELBOW, PIPE	1	013-505		
13	FITTING	1	H182-382		
64	TUBE	1	55-1654-1		
11	FITTING	1	H182-383		
24	FITTING	1	182-849		
65	VALVE, PILOT OPERATED	1	15-1823-2		
38	FITTING	1	182-906-6		
66	TEE, PIPE	1	013-1604		
67	FITTING	1	182-703		
68	FITTING	1	182-435-13		
69	TUBE	1	55-2508-5		
70	FITTING	1	182-436-13		
71	FILTER	1	43-985		
72	ELBOW, PIPE	1	013-504		
73	NIPPLE, PIPE	1	013-24		
74	TUBE	AR	55-2508-4		
75	FITTING	1	182-405-2		
76	FITTING	1	182-436		
77	FILTER	1	43-721		
78	FILTER	1	182-908		
79	VLAVE, CHECK	1	15-1703		
80	GAGE, SIGHT	1	60-453		
81	FITTING	1	H182-356		
82	TUBE	1	55-48-47		
83	FITTING	1	H182-357		
84	BOARD, PRINTED CIRCUIT	1	76-1093-4		
85	SCREW, SPECIAL	4	03-75		
86	WASHER, LOCK	8	05-152		
87	NUT	4	04-11		
88	ISOLATOR, VIBRATION	1	74-249		
89	SPACER	4	22-1295		
90	WIRE ASSEMBLY	2	A61-888-2		
91	LEAD/LAG SELECTOR SWITCH		SEE GROUP 6C		
	SWITCH, SELECTOR, SS3	1	76-1107		
	DECAL, POSITION	1	62-1141-14		
	WIRE	1	61-971		

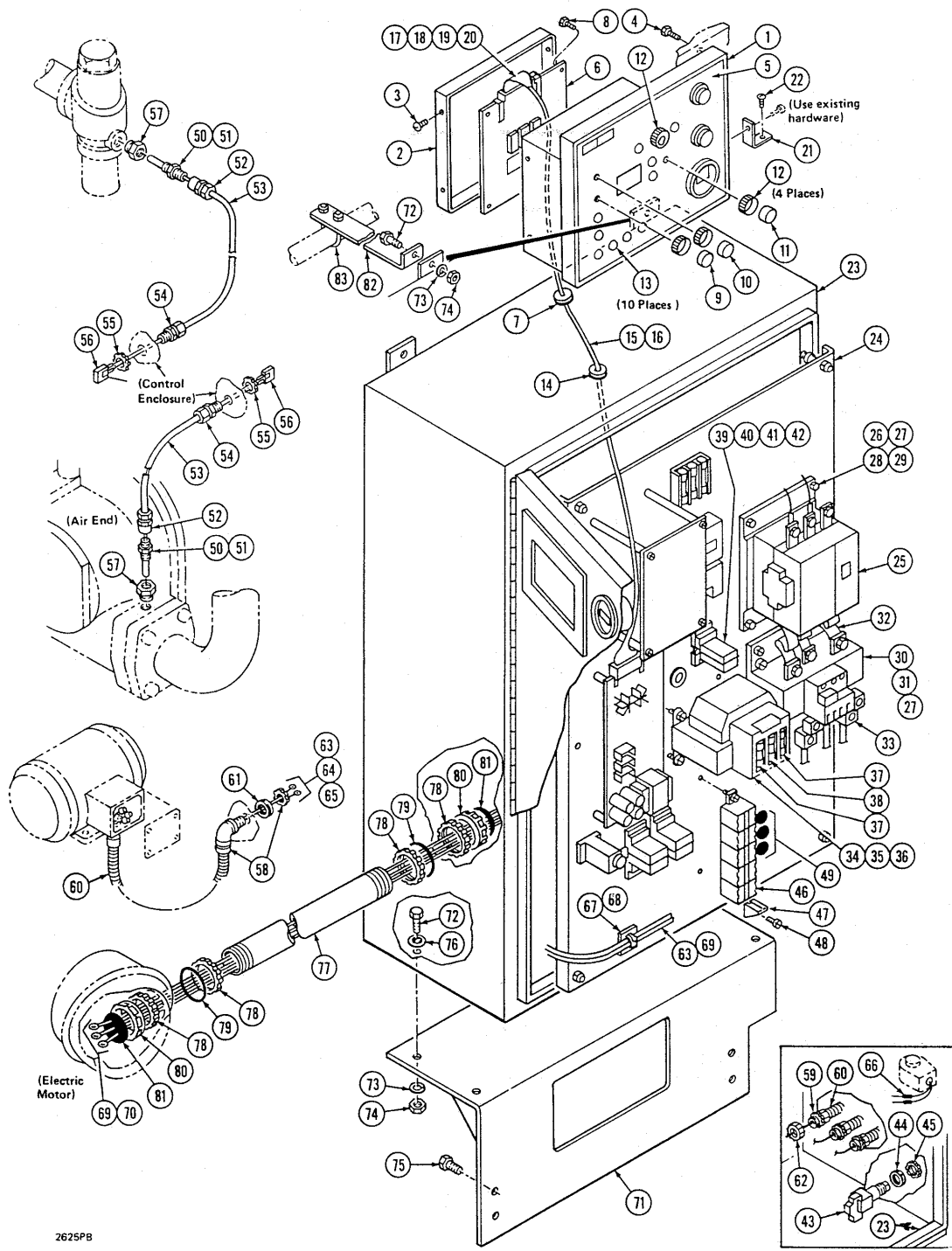
THIS PAGE LEFT INTENTIONALLY BLANK.



2623PB

PARTS LIST GROUPS AND COMPONENTS

MODEL WE125-150-200SSII			PART NUMBERS		
GROUP NO. 6C CONTROLS – ELECTRONIC BYPASS CONTROL			STANDARD		
REF	PART DESCRIPTION	QTY	17G76-990-6		
1	BOARD, PRINTED CIRCUIT	1	76-990-6		
2	SPACER	4	22-1290		
3	SPACER	4	22-1253		
4	SCREW, SPECIAL	4	03-73		
5	WASHER, LOCK	4	05-102		
6	SCREW, CAP	4	02-2		
7	WASHER, LOCK	4	05-105		
8	TRANSFORMER	1	185-20		
9	SCREW, SPECIAL	4	34-1407-6		
10	WASHER, FLAT	4	06-54		
11	STRIP, TERMINAL	3	121-157		
12	CLAMP	1	83-924		
13	SCREW, SPECIAL	2	34-1201-2		
14	BLOCK, FUSE	1	139-270		
13	SCREW, SPECIAL	1	34-1201-2		
15	FUSE	1	139-271		
16	SWITCH, RELAY (CR4)	1	76-1063		
17	SWITCH, SOCKET	1	76-1063-1		
18	SWITCH, RETAINER	1	76-1063-2		
19	SCREW, SPECIAL	2	34-1407-8		
20	TRANSDUCER ASSEMBLY	1	A76-989		
	TRANSDUCER, PRESSURE	1	Inc. A to B 76-989—A		
	TERMINAL, PIN	AR	121-210		
	CONNECTOR	1	121-211—B		
21	FITTING	1	182-920		
22	SEAL	1	125-715		
23	NUT, SPECIAL	1	53-261-1		
24	SWITCH, TIMER	1	76-1013		
25	SWITCH, SOCKET	1	76-1014		
13	SCREW, SPECIAL	2	34-1201-2		
26	SWITCH, RELAY (CR6)	1	76-1003		
27	SWITCH, SOCKET	1	76-1003-1		
28	SWITCH, RETAINER	1	76-1003-2		
19	SCREW, SPECIAL	2	34-1407-8		
29	SWITCH, PRESSURE (PS1)	1	76-845-1		
22	SEAL	1	125-715		
23	NUT, SPECIAL	1	53-261-1		
30	SWITCH, SELECTOR	1	76-1126		
31	DECAL, SWITCH POSITION	1	62-1141-26		
32	SURPRESSOR, SURGE	2	167-57		
33	SWITCH, SELECTOR	1	76-1107		
34	DECAL, SWITCH POSITION	1	62-1141-14		
35	LAMP, INDICATOR	1	160-91-1		
36	DECAL, "AUTO RESTART"	1	62-1141-12		
37	COVER, WINDOW	1	14-1815		
38	FITTING, CONDUIT	1	188-94		
39	FITTING, CONDUIT	1	188-95		
40	CONDUIT	AR	61-596		
41	WIRE, RED	AR	61-888-22		
42	SWITCH, PRESSURE (PS-2)	1	76-845		
22	SEAL	1	125-715		
23	NUT, SPECIAL	1	53-261-1		



2625PB

PARTS LIST GROUPS AND COMPONENTS

MODEL
WE125-150-200SSII

PART NUMBERS

**GROUP NO. 7 INSTRUMENT PANEL - CONTROL
ENCLOSURE - A T L STARTERS - UNHOUSED**

REF	PART DESCRIPTION	QTY	STANDARD		
			STANDARD	STANDARD	STANDARD
			3G151-464 G60-457 2G68-2244-2 4G68-2244-2 G61-888-15 WE125SSII	3G151-464 G60-457 13G68-2244-2 6G68-2244-2 G61-888-15 WE150SSII	3G151-464 60-457 G68-2244-2 8G68-2244-2 G61-888-18 WE200SSII
1	INSTRUMENT PANEL ASSEMBLY	1	3A151-464 Inc. A to B	3A151-464 Inc. A to B	3A151-464 Inc. A to B
1	PANEL, INSTRUMENT	1	151-464—A	151-464—A	151-464—A
2	COVER	1	14-1847	14-1847	14-1847
3	SCREW, SPECIAL	4	03-129	03-129	03-129
4	SCREW, SPECIAL	4	34-1407-1	34-1407-1	34-1407-1
5	DECAL, PANEL	1	62-1176	62-1176	62-1176
6	BOARD, PRINTED CIRCUIT	1	76-1094-1	76-1094-1	76-1094-1
7	GROMMET	1	M150-66	M150-66	M150-66
8	SCREW, SPECIAL	4	03-90	03-90	03-90
9	SWITCH, COVER	1	76-1058	76-1058	76-1058
10	SWITCH, COVER	1	76-1058-1	76-1058-1	76-1058-1
11	SWITCH, COVER	1	76-1058-2	76-1058-2	76-1058-2
12	GUARD, SWITCH	4	156-810	156-810	156-810
13	LAMP, LENS	10	160-95—B	160-95—B	160-95—B
14	GROMMET	1	C150-3	C150-3	C150-3
15	CABLE	1	A61-917-1 Inc. C to D	A61-917-1 Inc. C to D	A61-917-1 Inc. C to D
16	WIRE, 15 CONDUCTOR CABLE	AR	61-917—C	61-917—C	61-917—C
17	TERMINAL, CONNECTOR	2	121-229	121-229	121-229
18	TERMINAL, CONNECTOR	30	121-230	121-230	121-230
19	TERMINAL, CLIP	4	121-232	121-232	121-232
20	TERMINAL, CLIP	4	121-231—D	121-231—D	121-231—D
21	BRACKET	1	39-6797		
22	SCREW, SPECIAL	1	34-1407		
	460 VOLT				
23	ENCLOSURE, CONTROL	1	68-2244-2	68-2244-2	68-2244-2
24	PANEL, SUB	1	68-2244-3	68-2244-3	68-2244-3
25	SWITCH, MAGNETIC STARTER	1	76-1083-10	76-1083-10	76-1083-11
26	SCREW, SPECIAL	4	H34-1331	H34-1331	02-21
27	WASHER, FLAT	4	06-67	06-67	
28	WASHER, LOCK	4			05-50
29	NUT	4			04-102
30	SWITCH, OVERLOAD RELAY	1	76-1083-75	76-1083-75	76-1083-43
31	SCREW, SPECIAL	3	H34-579-2	H34-579-2	34-1407-1
27	WASHER, FLAT	3	06-67	06-67	06-66
32	WIRE, LINK	1		61-934-1	61-934-1
33	SWITCH, LUG KIT	1	76-1083-50	76-1083-11	76-1083-51
34	TRANSFORMER	1	185-24-4	185-24-7	185-24-7
35	SCREW, SPECIAL	4	34-1407-6	34-1201	H34-579-2
36	WASHER, FLAT	4	06-65		06-65
37	FUSE, PRIMARY	2	139-275-6	139-275-8	139-275-8
38	FUSE, SECONDARY	1	139-261-5	139-261-3	139-261-3
39	SWITCH, RELAY	1	76-1003	76-1003	76-1003
40	SWITCH, SOCKET	1	76-1003-1	76-1003-1	76-1003-1
41	SWITCH, RETAINER	1	76-1003-2	76-1003-2	76-1003-2
42	SCREW, SPECIAL	2	34-1407-6		34-1407-8
43	SWITCH, PRESSURE	1	76-845		76-845
44	SEAL, O-RING	1	125-715	125-715	125-715
45	NUT, SPECIAL	1	53-261-1	53-261-1	53-261-1
46	BLOCK, TERMINAL	2	121-157	121-157	(5) 121-157

PARTS LIST GROUPS AND COMPONENTS

MODEL
WE125-150-200SSII

PART NUMBERS

**GROUP NO. 7 INSTRUMENT PANEL - CONTROL
ENCLOSURE - A T L STARTERS - UNHOUSED**

REF	PART DESCRIPTION	QTY	STANDARD	STANDARD	STANDARD
			3G151-464 G60-457 2G68-2244-2 4G68-2244-2 G61-888-15 WE125SSII	3G151-464 G60-457 13G68-2244-2 6G68-2244-2 G61-888-15 WE150SSII	3G151-464 60-457 G68-2244-2 8G68-2244-2 G61-888-18 WE200SSII
47	CLAMP	1	83-924	83-924	83-924
48	SCREW, SPECIAL	2	34-1201	34-1201-3	34-1201
49	SURPRESSOR, SURGE	3	167-57	167-57	167-57
50	TEMPERATURE TRANSDUCER ASSEMBLY	2	A76-1122-1 Inc. E to F	A76-1122-1 Inc. E to F	A76-1122-1 Inc. E to F
51	TRANSDUCER, TEMPERATURE	1	76-1122—E	76-1122—E	76-1122—E
52	FITTING	1	182-611-3	182-611-3	182-611-3
55	NUT, CONDUIT	1	53-261	53-261	53-261
56	FITTING, CONDUIT	1	121-227—F	121-227—F	121-227—F
57	BUSHING, PIPE	2	013-1065	013-1065	013-1065
58	FITTING, CONDUIT	1	188-94	188-94	188-94
59	FITTING, CONDUIT	1	188-95	188-95	188-95
60	CONDUIT	AR	61-596	61-596	61-596
61	SEAL	1	125-715	125-715	125-715
63	WIRE, RED	AR	61-888-22	61-888-22	61-888-22
64	WIRE, WHITE	AR	61-888-23	61-888-23	61-888-23
65	TERMINAL, SPECIAL	6	121-99	121-99	121-99
66	SPLICE	2	121-173	121-173	121-173
67	CLAMP, WIRE	50	83-659	83-659	83-659
68	CLAMP, BASE	20	83-659-3	83-659-3	83-659-3
	575 VOLT				
23	ENCLOSURE, CONTROL	1	68-2244-2	68-2244-2	68-2244-2
24	PANEL, SUB	1	68-2244-3	68-2244-3	68-2244-3
25	SWITCH, MAGNETIC STARTER	1	76-1083-10	76-1083-10	76-1083-11
26	SCREW, SPECIAL	4	H34-1331	H34-1331	02-21
27	WASHER, FLAT	4	06-67	06-67	
28	WASHER, LOCK	4			05-50
29	NUT	4			04-102
30	SWITCH, OVERLOAD RELAY	1	76-1083-75	76-1083-75	73-1083-75
31	SCREW, SPECIAL	3	H34-579-2	H34-579-2	34-1407-1
27	WASHER, FLAT	3	06-67	06-67	06-66
32	WIRE, LINK	1		61-934	61-934-1
33	SWITCH, LUG KIT	1	76-1083-50	76-1083-50	76-1083-51
34	TRANSFORMER	1	185-24-15	185-24-15	185-24-18
35	SCREW, SPECIAL	4	34-1407-6	34-1407-6	H34-579-2
36	WASHER, FLAT	4	06-65		
37	FUSE, PRIMARY	2	139-275-6	139-275-6	139-275-8
38	FUSE, SECONDARY	1	139-261-5	139-261-5	139-261-3
39	SWITCH, RELAY	1	76-1003	76-1003	76-1003
40	SWITCH, SOCKET	1	76-1003-1	76-1003-1	76-1003-1
41	SWITCH, RETAINER	1	76-1003-2	76-1003-2	76-1003-2
42	SCREW, SPECIAL	2	34-1407-6	34-1407-6	34-1407-6
43	SWITCH, PRESSURE	1	76-1263	76-1263	76-1263
44	SEAL, O-RING	1	125-715	125-715	125-715
45	NUT, SPECIAL	1	53-261-1	53-261-1	53-261-1
46	BLOCK, TERMINAL	5	121-157	121-157	121-157
47	CLAMP	1	83-924	83-924	83-924
48	SCREW, SPECIAL	2	34-1201	34-1201	34-1201
49	SURPRESSOR, SURGE	3	167-57	167-57	167-57

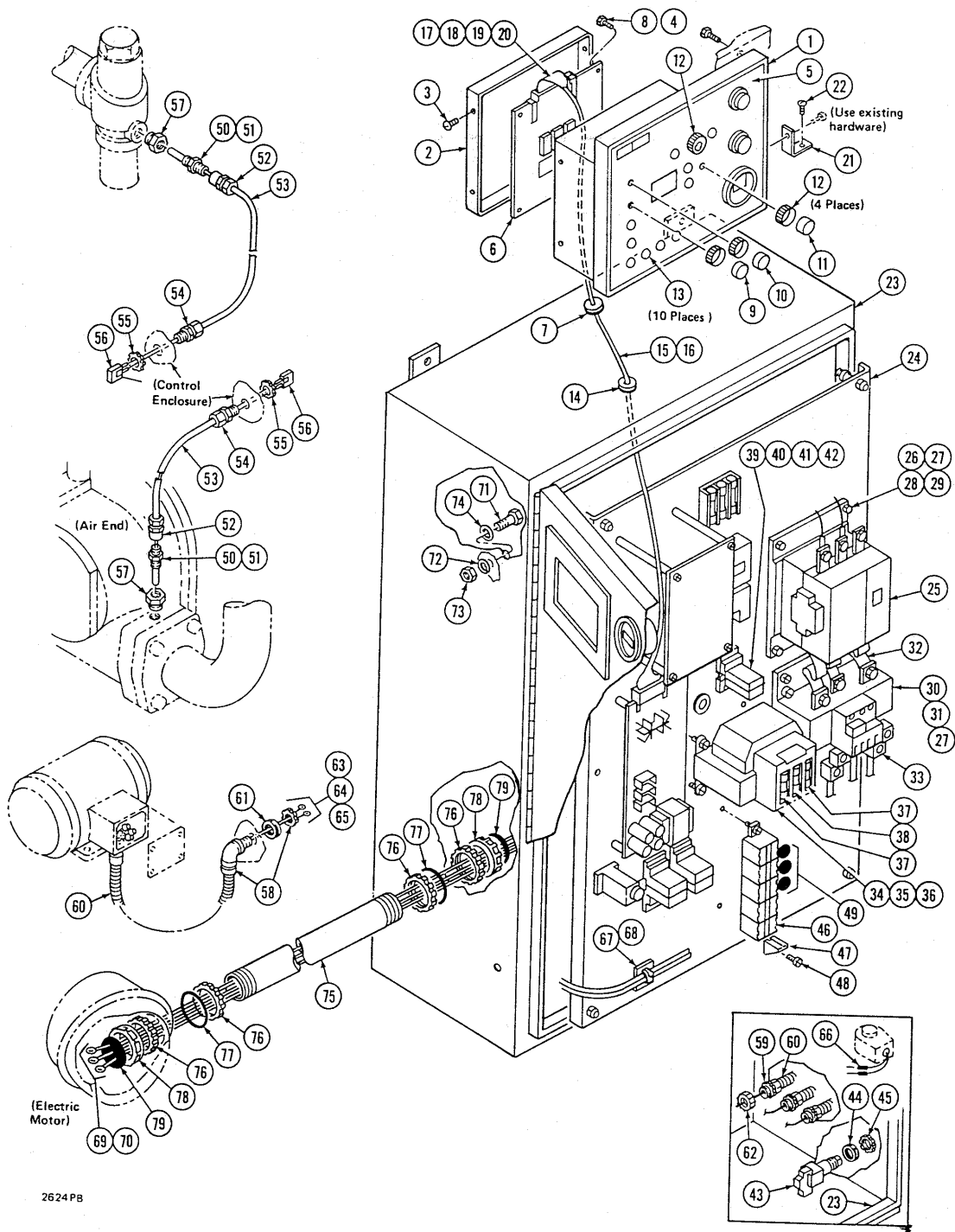
PARTS LIST GROUPS AND COMPONENTS

MODEL
WE125-150-200SSII

**GROUP NO. 7 INSTRUMENT PANEL - CONTROL
ENCLOSURE - A T L STARTERS - UNHOUSED**

PART NUMBERS

			STANDARD	STANDARD	STANDARD
			3G151-464 G60-457 2G68-2244-2 4G68-2244-2 G61-888-15 WE125SSII	3G151-464 G60-457 2G68-2244-2 6G68-2244-2 G61-888-15 WE150SSII	3G151-464 60-457 G68-2244-2 8G68-2244-2 G61-888-18 WE200SSII
50	TEMPERATURE TRANSDUCER ASSEMBLY	2	A76-1122-1 Inc. G to H	A76-1122-1 Inc. G to H	A76-1122-1 Inc. G to H
51	TRANSDUCER, TEMPERATURE	1	76-1122—G	76-1122—G	76-1122—G
52	FITTING	1	182-611-3	182-611-3	182-611-3
55	NUT, CONDUIT	1	53-261	53-261	53-261
56	FITTING, CONDUIT	1	121-227—H	121-227—H	121-227—H
57	BUSHING, PIPE	2	013-1065	013-1065	013-1065
58	FITTING, CONDUIT	1	188-94	188-94	188-94
59	FITTING, CONDUIT	1	188-95	188-95	188-95
60	CONDUIT	AR	61-596	61-596	61-596
61	SEAL, O-RING	1	125-715	125-715	125-715
63	WIRE, RED	AR	61-888-22	61-888-22	61-888-22
64	WIRE, WHITE	AR	61-888-23	61-888-23	61-888-23
65	TERMINAL, SPECIAL	6	121-99	121-99	121-99
66	SPLICE	2	121-173	121-173	121-173
67	CLAMP, WIRE	50	83-659	83-659	83-659
68	CLAMP, BASE	20	83-659-3	83-659-3	83-659-3
69	WIRE	AR	61-888-14	61-888-14	61-888-15
70	TERMINAL	3	121-208-34	121-208-34	121-208-50
71	SUPPORT	1	A39-6915	A39-6915	A39-6915
72	SCREW, CAP	4	02-36	02-36	02-36
73	WASHER, LOCK	4	05-51-1	05-51-1	05-51-1
74	NUT	4	04-103	04-103	04-103
75	SCREW, SPECIAL	4	34-1512-1	34-1512-1	34-1512-1
76	SEAL	4	M125-842-2	M125-842-2	M125-842
77	CONDUIT	AR	61-930	61-930	61-930-1
78	NUT, CONDUIT	4	188-130-6	188-130-6	188-130-8
79	SEAL	2	125-715-8	125-715-8	125-715-6
80	FITTING	2	188-74-1	188-74-1	188-74-3
81	COMPOUND, SEALING	AR	125-888	125-888	125-888
82	SUPPORT	1	39-6959	39-6959	39-6959
83	CLAMP, U-BOLT	1	83-689	83-689	83-689
72	SCREW, CAP	1	02-36	02-36	02-36
73	WASHER, LOCK	1	05-51-1	05-51-1	05-51-1
74	NUT	1	04-103	04-103	04-103



2624 PB

PARTS LIST GROUPS AND COMPONENTS

MODEL WE125-150-200SSII

**GROUP NO. 7A INSTRUMENT PANEL - CONTROL
ENCLOSURE - A T L STARTERS - HOUSED**

PART NUMBERS

			STANDARD	STANDARD	STANDARD
REF	PART DESCRIPTION	QTY			
			4G151-464 G60-457 2G68-2244-2 4G68-2244-2 1G61-888-15 WE125SSII	4G151-464 G60-457 13G68-2244-2 6G68-2244-2 1G61-888-15 WE150SSII	3G151-464 60-457 G68-2244-2 8G68-2244-2 1G61-888-18 WE200SSII
1	INSTRUMENT PANEL ASSEMBLY	1	4A151-464 Inc. A to B	4A151-464 Inc. A to B	3A151-464 Inc. A to B
1	PANEL, INSTRUMENT	1	151-464—A	151-464—A	151-464—A
2	COVER	1	14-1847	14-1847	14-1847
3	SCREW, SPECIAL	4	03-129	03-129	03-129
4	SCREW, SPECIAL	4	34-1407-1	34-1407-1	34-1407-1
5	DECAL, PANEL	1	62-1176	62-1176	62-1176
6	BOARD, PRINTED CIRCUIT	1	76-1094-1	76-1094-1	76-1094-1
7	GROMMET	1	M150-66	M150-66	M150-66
8	SCREW, SPECIAL	4	03-90	03-90	03-90
9	SWITCH, COVER	1	76-1058	76-1058	76-1058
10	SWITCH, COVER	1	76-1058-1	76-1058-1	76-1058-1
11	SWITCH, COVER	1	76-1058-2	76-1058-2	76-1058-2
12	GUARD, SWITCH	4	156-810	156-810	156-810
13	LAMP, LENS	10	160-95—B	160-95—B	160-95—B
14	GROMMET	1	C150-3	C150-3	C150-3
15	CABLE	1	A61-917-1 Inc. C to D	A61-917-1 Inc. C to D	A61-917-1 Inc. C to D
16	WIRE, 15 CONDUCTOR CABLE	AR	61-917—C	61-917—C	61-917—C
17	TERMINAL, CONNECTOR	2	121-229	121-229	121-229
18	TERMINAL, CONNECTOR	30	121-230	121-230	121-230
19	TERMINAL, CLIP	4	121-232	121-232	121-232
20	TERMINAL, CLIP	4	121-231—D	121-231—D	121-231—D
21	BRACKET	1	39-6797		
22	SCREW, SPECIAL	1	34-1407		
	460 VOLT				
23	ENCLOSURE, CONTROL	1	68-2244-2	68-2244-2	68-2244-2
24	PANEL, SUB	1	68-2244-3	68-2244-3	68-2244-3
25	SWITCH, MAGNETIC STARTER	1	76-1083-10	76-1083-10	76-1083-11
26	SCREW, SPECIAL	4	H34-1331	H34-1331	02-21
27	WASHER, FLAT	4	06-67	06-67	
28	WASHER, LOCK	4			05-50
29	NUT	4			04-102
30	SWITCH, OVERLOAD RELAY	1	76-1083-75	76-1083-75	76-1083-43
31	SCREW, SPECIAL	3	H34-579-2	H34-579-2	34-1407-1
27	WASHER, FLAT	3	06-67	06-67	06-66
32	WIRE, LINK	1		61-934-1	61-934-1
33	SWITCH, LUG KIT	1	76-1083-50	76-1083-11	76-1083-51
34	TRANSFORMER	1	185-24-4	185-24-7	185-24-7
35	SCREW, SPECIAL	4	34-1407-6	34-1201	H34-579-2
36	WASHER, FLAT	4	06-65		06-65
37	FUSE, PRIMARY	2	139-275-6	139-275-8	139-275-8
38	FUSE, SECONDARY	1	139-261-5	139-261-3	139-261-3
39	SWITCH, RELAY	1	76-1003	76-1003	76-1003
40	SWITCH, SOCKET	1	76-1003-1	76-1003-1	76-1003-1
41	SWITCH, RETAINER	1	76-1003-2	76-1003-2	76-1003-2
42	SCREW, SPECIAL	2	34-1407-6		34-1407-8
43	SWITCH, PRESSURE	1	76-845		76-845
44	SEAL, O-RING	1	125-715	125-715	125-715
45	NUT, SPECIAL	1	53-261-1	53-261-1	53-261-1
46	BLOCK, TERMINAL	2	121-157	121-157	(5) 121-157

PARTS LIST GROUPS AND COMPONENTS

MODEL
WE125-150-200SSII

PART NUMBERS

**GROUP NO. 7A INSTRUMENT PANEL - CONTROL
ENCLOSURE - A T L STARTERS - HOUSED**

REF	PART DESCRIPTION	QTY	STANDARD		
			STANDARD	STANDARD	STANDARD
			4G151-464 G60-457 2G68-2244-2 4G68-2244-2 1G61-888-15 WE125SSII	4G151-464 G60-457 13G68-2244-2 6G68-2244-2 1G61-888-15 WE150SSII	3G151-464 60-457 G68-2244-2 8G68-2244-2 1G61-888-18 WE200SSII
47	CLAMP	1	83-924	83-924	83-924
48	SCREW, SPECIAL	2	34-1201	34-1201-3	34-1201
49	SURPRESSOR, SURGE	3	167-57	167-57	167-57
50	TEMPERATURE TRANSDUCER ASSEMBLY	2	A76-1122-1 Inc. E to F	A76-1122-1 Inc. E to F	A76-1122-1 Inc. E to F
51	TRANSDUCER, TEMPERATURE	1	76-1122—E	76-1122—E	76-1122—E
52	FITTING	1	182-611-3	182-611-3	182-611-3
53	TUBE	1			55-2556
54	FITTING	1	182-405	182-405	182-405
55	NUT, CONDUIT	1			53-261
56	FITTING, CONDUIT	1	121-227—F	121-227—F	121-227—F
57	BUSHING, PIPE	2	013-1065	013-1065	013-1065
58	FITTING, CONDUIT	1	188-94	188-94	188-94
59	FITTING, CONDUIT	1	188-95	188-95	188-95
60	CONDUIT	AR	61-596	61-596	61-596
61	SEAL	1	125-715	125-715	125-715
62	FITTING, CONDUIT	1			188-74-7
63	WIRE, RED	AR	61-888-22	61-888-22	61-888-22
64	WIRE, WHITE	AR	61-888-23	61-888-23	61-888-23
65	TERMINAL, SPECIAL	6	121-99	121-99	121-99
66	SPLICE	2	121-173	121-173	121-173
67	CLAMP, WIRE	50	83-659	83-659	83-659
68	CLAMP, BASE	20	83-659-3	83-659-3	83-659-3
	575 VOLT				
23	ENCLOSURE, CONTROL	1	68-2244-2	68-2244-2	68-2244-2
24	PANEL, SUB	1	68-2244-3	68-2244-3	68-2244-3
25	SWITCH, MAGNETIC STARTER	1	76-1083-10	76-1083-10	76-1083-11
26	SCREW, SPECIAL	4	H34-1331	H34-1331	02-21
27	WASHER, FLAT	4	06-67	06-67	
28	WASHER, LOCK	4			05-50
29	NUT	4			04-102
30	SWITCH, OVERLOAD RELAY	1	76-1083-75	76-1083-75	73-1083-75
31	SCREW, SPECIAL	3	H34-579-2	H34-579-2	34-1407-1
27	WASHER, FLAT	3	06-67	06-67	06-66
32	WIRE, LINK	1		61-934	61-934-1
33	SWITCH, LUG KIT	1	76-1083-50	76-1083-50	76-1083-51
34	TRANSFORMER	1	185-24-15	185-24-15	185-24-18
35	SCREW, SPECIAL	4	34-1407-6	34-1407-6	H34-579-2
36	WASHER, FLAT	4	06-65		
37	FUSE, PRIMARY	2	139-275-6	139-275-6	139-275-8
38	FUSE, SECONDARY	1	139-261-5	139-261-5	139-261-3
39	SWITCH, RELAY	1	76-1003	76-1003	76-1003
40	SWITCH, SOCKET	1	76-1003-1	76-1003-1	76-1003-1
41	SWITCH, RETAINER	1	76-1003-2	76-1003-2	76-1003-2
42	SCREW, SPECIAL	2	34-1407-6	34-1407-6	34-1407-6
43	SWITCH, PRESSURE	1	76-1263	76-1263	76-1263
44	SEAL, O-RING	1	125-715	125-715	125-715
45	NUT, SPECIAL	1	53-261-1	53-261-1	53-261-1
46	BLOCK, TERMINAL	5	121-157	121-157	121-157
47	CLAMP	1	83-924	83-924	83-924

PARTS LIST GROUPS AND COMPONENTS

MODEL
WE125-150-200SSII

PART NUMBERS

**GROUP NO. 7A INSTRUMENT PANEL - CONTROL
ENCLOSURE - A T L STARTERS - HOUSED**

REF	PART DESCRIPTION	QTY	STANDARD		
			STANDARD	STANDARD	STANDARD
			4G151-464 G60-457 2G68-2244-2 4G68-2244-2 1G61-888-15 WE125SSII	4G151-464 G60-457 13G68-2244-2 6G68-2244-2 1G61-888-15 WE150SSII	3G151-464 60-457 G68-2244-2 8G68-2244-2 1G61-888-18 WE200SSII
48	SCREW, SPECIAL	2	34-1201	34-1201	34-1201
49	SURPRESSOR, SURGE	3	167-57	167-57	167-57
50	TEMPERATURE TRANSDUCER ASSEMBLY	2	A76-1122-1 Inc. G to H	A76-1122-1 Inc. G to H	A76-1122-1 Inc. G to H
51	TRANSUCER, TEMPERATURE	1	76-1122—G	76-1122—G	76-1122—G
52	FITTING	1	182-611-3	182-611-3	182-611-3
55	NUT, CONDUIT	1	53-261	53-261	53-261
56	FITTING, CONDUIT	1	121-227—H	121-227—H	121-227—H
57	BUSHING, PIPE	2	013-1065	013-1065	013-1065
58	FITTING, CONDUIT	1	188-94	188-94	188-94
59	FITTING, CONDUIT	1	188-95	188-95	188-95
60	CONDUIT	AR	61-596	61-596	61-596
61	SEAL, O-RING	1	125-715	125-715	125-715
62	FITTING, CONDUIT	1	188-74-7	188-74-7	188-74-7
64	WIRE, WHITE	AR	61-888-23	61-888-23	61-888-23
65	TERMINAL, SPECIAL	6	121-99	121-99	121-99
66	SPLICE	2	121-173	121-173	121-173
67	CLAMP, WIRE	50	83-659	83-659	83-659
68	CLAMP, BASE	20	83-659-3	83-659-3	83-659-3
69	WIRE	AR	61-1032-14	61-1032-14	61-1032-14
70	TERMINAL	3	121-208-34	121-208-34	121-208-50
71	SUPPORT	1	A39-6915	A39-6915	A39-6915
72	SCREW, CAP	4	02-318	02-318	02-318
73	WASHER, LOCK	4	05-51-1	05-51-1	05-51-1
74	NUT	4	04-102	04-102	04-102
75	SCREW, SPECIAL	4	34-1512-1	34-1512-1	34-1512-1
76	SEAL	4	M125-842	M125-842	M125-842
77	CONDUIT	AR	61-930	61-930	61-930-1
78	NUT, CONDUIT	4	188-130-6	188-130-6	188-130-8
79	SEAL	2	125-715-8	125-715-8	125-715-6
80	FITTING	2	188-74-1	188-74-1	188-74-3
81	COMPOUND, SEALING	AR	125-888	125-888	125-888
82	SUPPORT	1	39-6959	39-6959	39-6959
83	CLAMP, U-BOLT	1	83-689	83-689	83-689
72	SCREW, CAP	1	02-36	02-36	02-36
73	WASHER, LOCK	1	05-51-1	05-51-1	05-51-1
74	NUT	1	04-102	04-102	04-103

PARTS LIST GROUPS AND COMPONENTS

MODEL
WE125-150-200SSII

PART NUMBERS

GROUP NO. 7B STARTERS

REF	PART DESCRIPTION	QTY	STANDARD		
			STANDARD	STANDARD	STANDARD
			6A68-2170-46	3A68-2170-46	5G39-6517
				4A68-2170-46	4G68-2170-46
			7G68-2244-2	7G68-2244-2	7G68-2244-2
			G76-1258-10	G76-1258-10	G76-1258-14
			1G39-6517-2	2G39-6517-2	
			3G39-6517	3G39-6517-2	4G39-6517
			WE125SSII	WE150SSII	WE200SSII
	460 VOLT SOLID STATE				
	ENCLOSURE, CONTROL	1	68-2244-2	68-2244-2	68-2244-2
	PANEL, SUB	1	68-2244-3	68-2244-3	68-2244-3
	SWITCH, RELAY	1	76-1003	76-1003	76-1003
	SWITCH, SOCKET	1	76-1003-1	76-1003-1	76-1003-1
	SWITCH, RETAINER	1	76-1003-2	76-1003-2	76-1003-2
	SCREW, SPECIAL	2	34-1201-3	34-1201-3	34-1201-3
	SWITCH, PRESSURE	1	76-1263	76-1263	76-1263
	SEAL	1	125-715	125-715	125-715
	NUT	1	53-261-1	53-261-1	53-261-1
	BLOCK, TERMINAL	5	121-157	121-157	121-157
	CLAMP	1	83-924	83-924	83-924
	SCREW, SPECIAL	2	34-1201	34-1201	34-1201
	SURPRESSOR	3	167-57	167-57	167-57
	SWITCH, TRANSDUCER	2	A76-1122-1	A76-1122-1	A76-1122-1
	BUSHING, PIPE	2	013-1065	013-1065	013-1065
	FITTING, CONDUIT	1	188-94	188-94	188-94
	FITTING, CONDUIT	1	188-95	188-95	188-95
	CONDUIT	AR	61-596	61-596	61-596
	SEAL	1	125-715	125-715	125-715
	RC NETWORK	3	167-58	167-58	167-58
	WIRE, RED	AR	61-888-22	61-888-22	61-888-22
	WIRE, WHITE	AR	61-888-23	61-888-23	61-888-23
	TERMINAL	6	121-99	121-99	121-99
	SPLICE, SPECIAL	2	121-173	121-173	121-173
	CLAMP, WIRE	50	83-659	83-659	83-659
	CLAMP, BASE	20	83-659-3	83-659-3	83-659-3
	SWITCH, SOLID STATE STARTER	1	76-1258-10	76-1258-10	76-1258-14
	TRANSFORMER	1	185-24-8	185-24-8	185-24-8
	SCREW, SPECIAL	4	H34-579-2	H34-579-2	H34-279-2
	FUSE	2	139-275-10	139-275-10	139-275-10
	FUSE	1	139-261-7	139-261-7	139-261-7
	TERMINAL	2	121-157	121-157	121-157
	CLAMP, STRIP	1	83-924	83-924	83-924
	SCREW, SPECIAL	2	03-1447	03-1447	03-1447
	SWITCH, RELAY	1	76-1063-3	76-1063-3	76-1063-3
	SWITCH, BASE	1	76-1063-1	76-1063-1	76-1063-1
	SWITCH, RETAINER	1	76-1063-2	76-1063-2	76-1063-2
	SCREW, SPECIAL	2	03-1447	03-1447	03-1447
	WITHOUT HOUSING				
	SUPPORT, STARTER	2	A39-6517-5	A39-6517-2	1A39-6517
	SCREW, CAP	4	02-36	02-36	02-36
	WASHER, FLAT	4	06-4	06-4	06-4
	WASHER, LOCK	4	05-51	05-51	05-51
	NUT	2	04-103	04-103	04-103
	SUPPORT, BRACE	2	39-6805	39-6805	39-6805
	WIRE	AR	61-888-13	61-1032-13	61-1032-16
	CONDUIT	AR	61-930-3	61-918	61-918
	CONDUIT	1	188-128-6	188-128-4	61-930

PARTS LIST GROUPS AND COMPONENTS

**MODEL
WE125-150-200SSII**

PART NUMBERS

GROUP NO. 7B STARTERS

REF	PART DESCRIPTION	QTY	STANDARD	STANDARD	STANDARD
			6A68-2170-46	3A68-2170-46	5G39-6517
				4A68-2170-46	4G68-21710-46
			7G68-2244-2	7G68-2244-2	7G68-2244-2
			G76-1258-10	G76-1258-10	G76-1258-38
			1G39-6517-2	2G39-6517-2	
			3G39-6517	3G39-6517-2	4G39-6517
			WE125SSII	WE150SSII	WE200SSII
	NUT, CONDUIT	4	188-130-7	188-130-5	188-130-6
	SEAL	2	125-715-3	125-715-5	125-715-8
	INSULATOR	6	124-175-2	124-175-2	124-175-2
	TERMINAL	6	121-208-26	121-208-30	121-208-47
	COMPOUND, SEALING	AR	125-888	125-888	125-888
	<u>230 VOLT WYE-DELTA</u>				
	ENCLOSURE, STARTER	1		68-2170-46	
	PANEL, SUB	1		68-2170-29	
	SWITCH, STARTER	1		76-1083-11	
	INTERLOCK	1		76-1110-1	
	SWITCH, OVERLOAD RELAY	1		76-1083-76	
	SCREW, SPECIAL	7		H34-1331	
	WASHER, FLAT	7		06-65	
	TRANSFORMER	1		185-24-8	
	SCREW, SPECIAL	4		H34-579-2	
	FUSE	2		139-275-10	
	FUSE	1		139-261-7	
	SWITCH, TIMER	1		A76-1180	
	SWITCH	1		76-1180-1	
	SCREW, SPECIAL	2		03-1457	
	WIRE	AR		61-1032-16	
	KIT, LUG, STARTER	4		76-1083-51	
	LINK, CONNECTOR	1		61-934-1	
	TERMINAL, LUG	3		76-1083-50	
	BLOCK, TERMINAL	4		121-157	
	CLAMP, BLOCK	1		83-924	
	SCREW, SPECIAL	5		34-1201-2	
	CONNECTION	1		121-234-2	
	BLOCK, DISTRIBUTOR	1		121-180-5	
	SCREW, SPECIAL	4		H34-1331	
	ENCLOSURE, CONTROL	1		68-2244-2	
	PANEL, SUB	1		68-2244-3	
	SWITCH, RELAY	1		76-1003	
	SWITCH, SOCKET	1		76-1003-1	
	SWITCH, RETAINER	1		76-1003-2	
	SCREW, SPECIAL	2		34-1201-3	
	SWITCH, PRESSURE	1		76-1263	
	SEAL	1		125-715	
	NUT	1		53-261-1	
	BLOCK, TERMINAL	5		121-157	
	CLAMP	1		83-924	
	SCREW, SPECIAL	2		34-1201	
	SURPRESSOR	3		167-57	
	SWITCH, TRANSDUCER	2		A76-1122-1	
	BUSHING, PIPE	2		013-1065	
	FITTING, CONDUIT	1		188-94	
	FITTING, CONDUIT	1		188-95	
	CONDUIT	AR		61-596	
	SEAL	1		125-715	

PARTS LIST GROUPS AND COMPONENTS

MODEL
WE125-150-200SSII

PART NUMBERS

GROUP NO. 7B STARTERS

REF	PART DESCRIPTION	QTY	PART NUMBERS		
			STANDARD	STANDARD	STANDARD
			6A68-2170-46	3A68-2170-46	5G39-6517
				4A68-2170-46	4G68-2170-46
			7G68-2244-2	7G68-2244-2	7G68-2244-2
			G76-1258-10	G76-1258-10	G76-1258-38
			1G39-6517-2	2G39-6517-2	
			3G39-6517	3G39-6517-2	4G39-6517
			WE125SSII	WE150SSII	WE200SSII
	FITTING, CONDUIT	1		167-58	
	WIRE, RED	AR		61-888-22	
	TERMINAL	6		121-99	
	SPLICE, SPECIAL	2		121-173	
	CLAMP, WIRE	50		83-659	
	CLAMP, BASE	20		83-659-3	
	WITHOUT HOUSING				
	SUPPORT, STARTER	2		A39-6517-2	
	SPACER	2		22-1203-3	
	ROD	2		47-1047	
	SCREW, CAP	8		02-36	
	WASHER, FLAT	8		06-4	
	WASHER, LOCK	12		05-51-1	
	NUT	12		04-103	
	WIRE	AR		61-1032-16	
	CONDUIT	AR		61-930-2	
	CONDUIT	1		188-128-8	
	NUT, CONDUIT	4		188-130-9	
	SEAL	2		125-715-9	
	INSULATOR	3		125-175-2	
	TERMINAL	6		121-208-47	
	COMPOUND, SEALING	AR		125-888	
	460 VOLT WYE DELTA				
	ENCLOSURE, STARTER	1	68-2170-46	68-2170-46	68-2170-46
	PANEL, SUB	1	68-2170-29	68-2170-29	68-2170-29
	SWITCH, STARTER	3	76-1083-9	76-1083-9	76-1083-10
	INTERLOCK	1	76-1110-1	76-1110-1	76-1110-1
	SWITCH, OVERLOAD RELAY	1	76-1083-74	76-1083-40	76-1083-75
	SCREW, SPECIAL	7	H34-1331	H34-1331	H34-1331
	WASHER, FLAT	7	06-65	06-65	06-65
	TRANSFORMER	1	185-24-7	185-24-8	185-24-8
	SCREW, SPECIAL	4	H34-579-2	H34-579-2	H34-579-2
	FUSE	2	139-275-8	139-275-10	139-275-10
	FUSE	1	139-261-3	139-261-7	139-261-7
	SWITCH, TIMER	1	A76-1180	A76-1180	A76-1180
	SWITCH	1	76-1180-1	76-1180-1	76-1180-1
	SCREW, SPECIAL	2	03-1457	03-1457	03-1467
	WIRE	AR	61-888-12	61-888-12	61-888-12
	KIT, LUG, STARTER	4	76-1083-49	76-1083-49	76-1083-49
	KIT, LUG, OVERLOAD RELAY	1	76-1083-50	76-1083-50	76-1083-50
	BLOCK, TERMINAL	4	121-157	121-157	121-157
	CLAMP, BLOCK	1	83-924	83-924	83-924
	SCREW, SPECIAL	5	34-1201-2	34-1201-2	34-1201-2
	CONNECTION	1	121-234-1	121-234-1	121-234
	BLOCK, DISTRIBUTOR	2	121-180-1	121-180-1	121-180-5
	SCREW, SPECIAL	4	H34-1331	H34-1331	H34-1331
	SWITCH, N.O.	1	76-1083-47	76-1083-47	

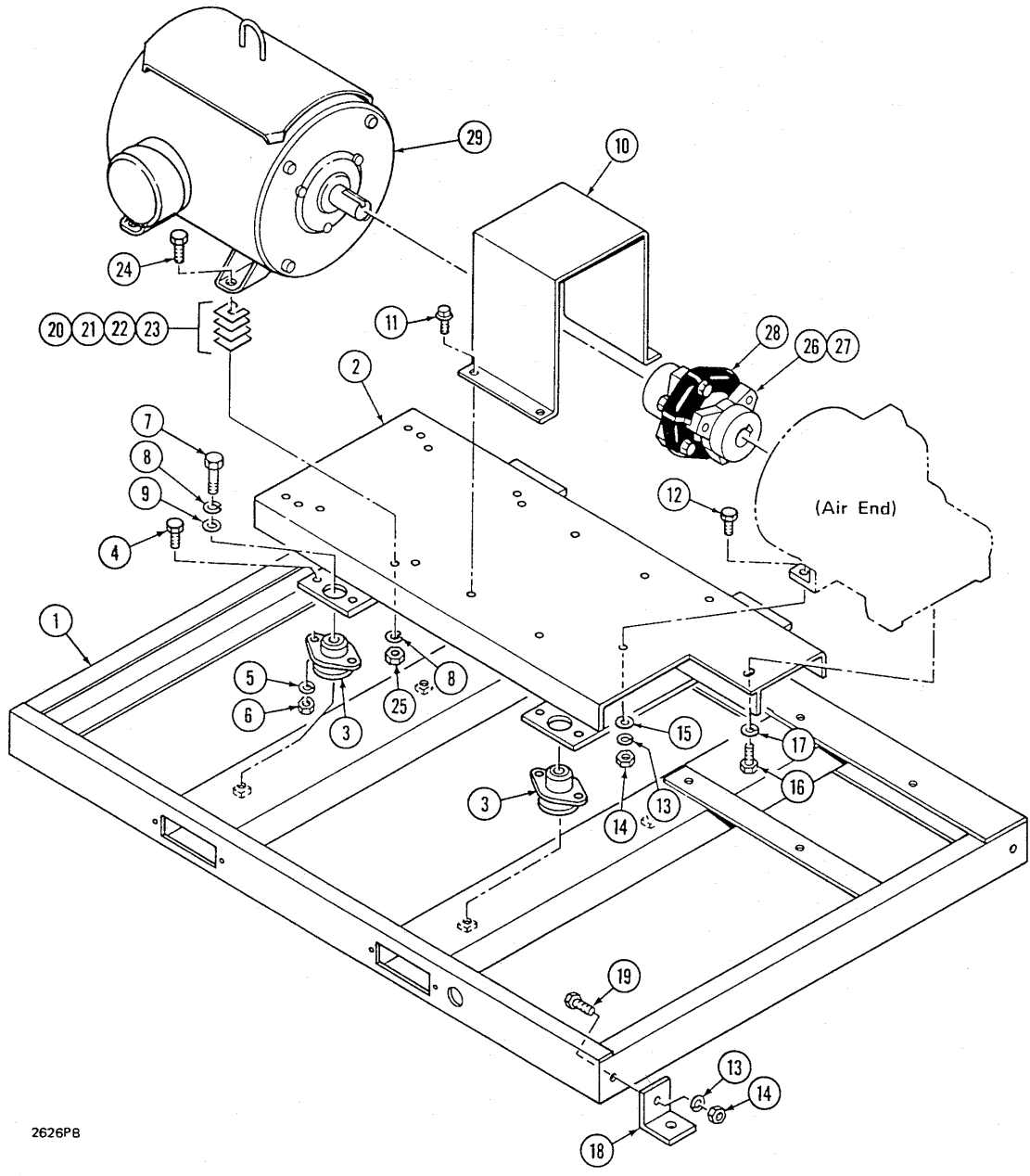
PARTS LIST GROUPS AND COMPONENTS

MODEL
WE125-150-200SSII

PART NUMBERS

GROUP NO. 7B STARTERS

			STANDARD	STANDARD	STANDARD
REF	PART DESCRIPTION	QTY	6A68-2170-46	3A68-2170-46	5G39-6517
			7G68-2244-2	4A68-2170-46	4G68-2170-46
			G76-1258-10	7G68-2244-2	7G68-2244-2
			1G39-6517-2	G76-1258-10	G76-1258-38
			3G39-6517	2G39-6517-2	
			WE125SSII	3G39-6517-2	4G39-6517
				WE150SSII	WE200SSII
	ENCLOSURE, CONTROL	1	68-2244-2	68-2244-2	68-2244-2
	PANEL, SUB	1	68-2244-3	68-2244-3	68-2244-3
	SWITCH, RELAY	1	76-1003	76-1003	76-1003
	SWITCH, SOCKET	1	76-1003-1	76-1003-1	76-1003-1
	SWITCH, RETAINER	1	76-1003-2	76-1003-2	76-1003-2
	SCREW, SPECIAL	2	34-1201-3	34-1201-3	34-1201-3
	SWITCH, PRESSURE	1	76-1263	76-1263	76-1263
	SEAL	1	125-715	125-715	125-715
	NUT	1	53-261-1	53-261-1	53-261-1
	BLOCK, TERMINAL	5	121-157	121-157	121-157
	CLAMP	1	83-924	83-924	83-924
	SCREW, SPECIAL	2	34-1201	34-1201	34-1201
	SURPRESSOR	3	167-57	167-57	167-57
	SWITCH, TRANSDUCER	2	A76-1122-1	A76-1122-1	A76-1122-1
	BUSHING, PIPE	2	013-1065	013-1065	013-1065
	FITTING, CONDUIT	1	188-94	188-94	188-94
	FITTING, CONDUIT	1	188-95	188-95	188-95
	CONDUIT	AR	61-596	61-596	61-596
	SEAL	1	125-715	125-715	125-715
	FITTING, CONDUIT	1	167-58	167-58	167-58
	WIRE, RED	AR	61-888-22	61-888-22	61-888-22
	WIRE, WHITE	AR	61-888-23	61-888-23	61-888-23
	TERMINAL	6	121-99	121-99	121-99
	SPLICE, SPECIAL	2	121-173	121-173	121-173
	CLAMP, WIRE	50	83-659	83-659	83-659
	CLAMP, BASE	20	83-659-3	83-659-3	83-659-3
	<u>WITHOUT HOUSING</u>				
	SUPPORT, STARTER	2	A39-6517-2	1A39-6517-2	1A39-6517
	SPACER	2	22-1203-3		
	ROD	2	47-1047		
	SCREW, CAP	8	02-36	(4) 02-36	(4) 02-36
	WASHER, FLAT	8	06-4	(4) 06-4	(4) 06-4
	WASHER, LOCK	12	05-51-1	(4) 05-51-1	(4) 05-51-1
	NUT	12	04-103	(2) 04-103	(2) 04-103
	SUPPORT, BRACE	2		39-6805	39-6805
	WIRE	AR	61-888-13	61-1032-13	61-1032-13
	CONDUIT	AR	61-930	61-930-3	61-930-3
	CONDUIT	1	188-128-5	188-128-6	188-128-6
	NUT, CONDUIT	4	188-130-6	188-130-7	188-130-7
	SEAL	2	125-715-8	125-715-3	125-715-3
	INSULATOR	3	124-175-2	124-175-2	124-175-2
	TERMINAL	6	121-208-26	121-208-30	121-208-30
	COMPOUND, SEALING	AR	125-888	125-888	125-888



2626PB

PARTS LIST GROUPS AND COMPONENTS

MODEL WE125-150-200SSII			PART NUMBERS		
GROUP NO. 8 FRAME – BEDPLATE - DRIVE COUPLING – ELECTRIC MOTORS			STANDARD	STANDARD	STANDARD
REF	PART DESCRIPTION	QTY	G118-1205 WE125SSII	G118-1205 WE150SSII	1G118-1205 WE200SSII
1	FRAME	1	A118-1251	A118-1251	A118-1251
2	BEDPLATE ASSEMBLY	1	A118-1250	A118-1250	A118-1250
3	ISOLATOR, VIBRATION	4	74-236	74-236	74-236
4	SCREW, CAP	8	02-71	02-71	02-71
5	WASHER, LOCK	8	05-53	05-53	05-53
6	NUT	8	04-105	04-105	04-105
7	SCREW, CAP	4	02-126	02-126	02-126
8	WASHER, LOCK	4	05-57	05-57	05-57
9	WASHER, FLAT	8	06-6	06-6	06-6
10	GUARD, COUPLING	1	156-818	156-818	156-818
11	SCREW, SPECIAL	4	34-1512	34-1512	34-1512
12	SCREW, CAP	2	04-105	04-105	04-105
13	WASHER, LOCK	2	05-55	05-55	05-55
14	NUT	2	04-108-1	04-108-1	04-108-1
15	WASHER, FLAT	2	06-8	06-8	06-8
16	SCREW, CAP	1	02-1013	02-1013	02-1013
17	WASHER, LOCK	1	05-58	05-58	05-58
18	BRACKET	4	39-6685	39-6685	39-6685
19	SCREW, CAP	4	02-101	02-101	02-101
13	WASHER, LOCK	4	05-55	05-55	05-55
14	NUT	4	04-108-1	04-108-1	04-108-1
20	SHIM, BLUE, .005"	AR	22-782	22-782	22-782
21	SHIM, TRANSLUCENT, .0075"	AR	22-782-1	22-782-1	22-782-1
22	SHIM, YELLOW, .020"	AR	22-782-2	22-782-2	22-782-2
23	SHIM, STEEL, .059"	AR	22-782-3	22-782-3	22-782-3
24	SCREW, CAP	4	02-121	02-121	02-121
8	WASHER, LOCK	4	05-57	05-57	05-57
25	NUT	4	04-109	04-109	04-109
26	COUPLING, DRIVE ODP	1	28-423-2		
27	COUPLING, DRIVE, TEFC	1	28-423-1	28-591	28-569-6
28	MEMBER, FLEXIBLE	1	Inc. A 28-427—A	28-591-1	28-429-2
29	MOTOR, ELECTRIC, ODP 230V	1	107-865-28	107-865-31	
29	MOTOR, ELECTRIC, ODP 460V	1	107-865-29	107-865-32	107-865-107
29	MOTOR, ELECTRIC, ODP 575V	1	107-865-30	107-865-33	107-865-113
29	MOTOR, ELECTRIC, TEFC 230V	1	107-870-28	107-870-31	
29	MOTOR, ELECTRIC, TEFC 460V	1	107-870-29	107-870-32	107-870-67
29	MOTOR, ELECTRIC, TEFC 575V	1	107-870-30	107-870-33	107-870-68
29	MOTOR, ELECTRIC, ODP, PW 230V	1	107-865-43	107-865-198	
29	MOTOR, ELECTRIC, ODP, PW 460V	1	107-865-43	107-865-92	107-865-35
29	MOTOR, ELECTRIC, ODP, PW 575V	1	107-865-90	107-865-93	
29	MOTOR, ELECTRIC, TEFC, PW 460V	1	107-870-116	107-870-74	
29	MOTOR, ELECTRIC, ODP, WYE DELTA	1	107-865-72	107-865-75	
29	MOTOR, ELECTRIC, ODP, WYE DELTA	1	107-865-72	107-865-76	107-865-79
29	MOTOR, ELECTRIC, ODP, WYE DELTA	1	107-865-74	107-865-77	107-865-80
29	MOTOR, ELECTRIC, TEFC, WYE DELTA	1	107-870-70	107-870-76	
29	MOTOR, ELECTRIC, ODP, HIGH EFF., 575V	1	107-876-63	107-876-66	
29	MOTOR, ELECTRIC, TEFC, HIGH EFF., 575V	1	107-917-71	107-917-74	
29	MOTOR, ELECTRIC, ODP, WYE DELTA HIGH EFF., 460V	1		107-876-105	
29	MOTOR, ELECTRIC, TEFC, WYE DELATA, HIGH EFF., 200V	1		107-917-88	

PARTS LIST GROUPS AND COMPONENTS

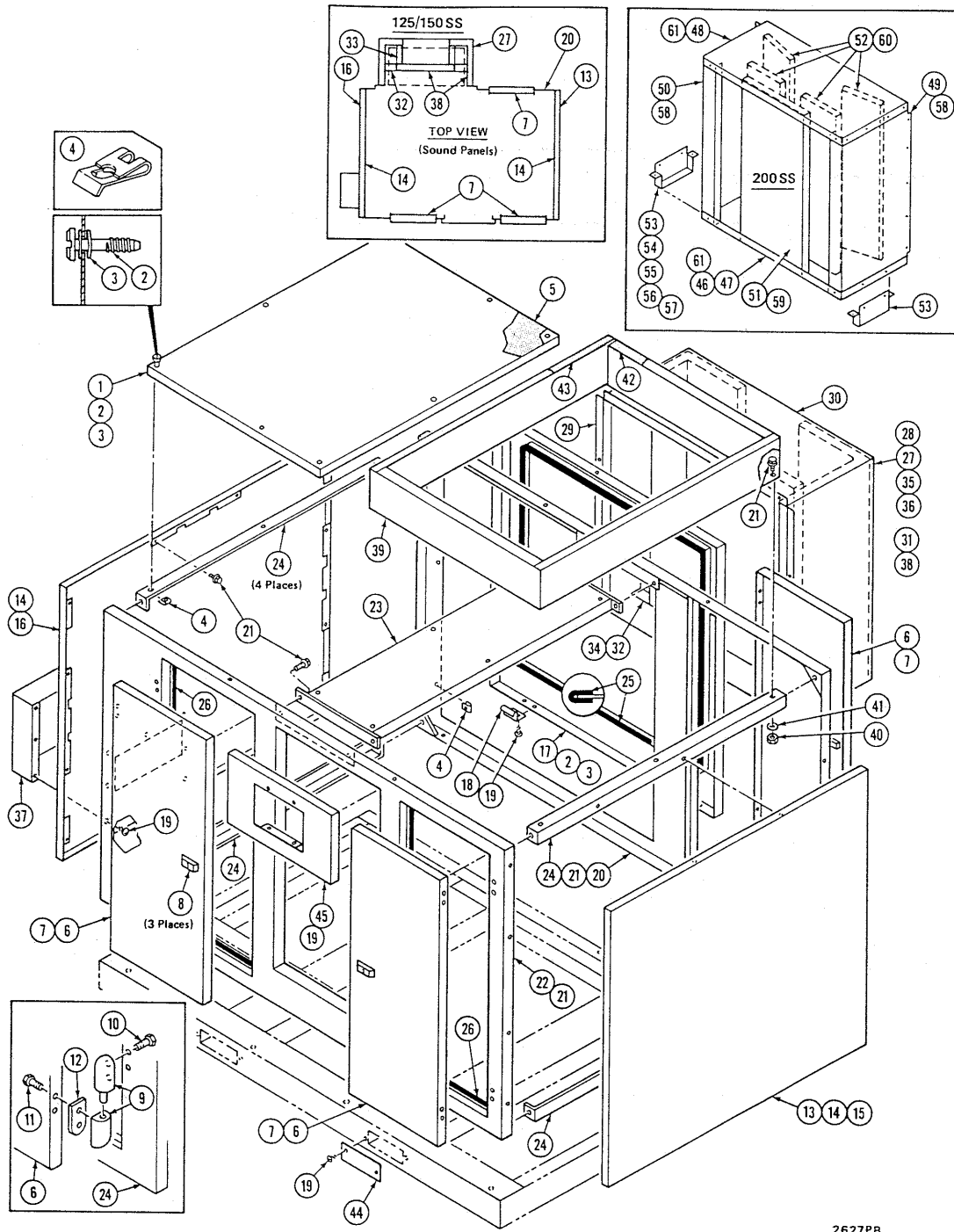
MODEL
WE125-150-200SSII

GROUP NO. 8 FRAME – BEDPLATE - DRIVE
COUPLING – ELECTRIC MOTORS

PART NUMBERS

			STANDARD	STANDARD	STANDARD
			G118-1175 WE125SSII	1G118-1175 WE150SSII	1G118-1205 WE200SSII
29	MOTOR, ELECTRIC, TEFC, WYE DELTA, HIGH EFF., 575V	1		107-917-91	
29	MOTOR, ELECTRIC, ODP, PW, HIGH EFF., 575V	1			107-876-69

THIS PAGE LEFT INTENTIONALLY BLANK.



2627PB

PARTS LIST GROUPS AND COMPONENTS

MODEL
WE125-150-200SSII

PART NUMBERS

GROUP NO. 9 HOUSING – AIR COOLED			STANDARD	STANDARD	STANDARD	STANDARD
REF	PART DESCRIPTION	QTY				
			12G68-2113	4G68-2113	13G68-2113	6G68-2113
			WE125SSII	A68-3107	WE200SSII	A68-2248
			WE150SSII	WE125SSII		WE200SSII
				WE150SSII		QUIET
				QUIET		
1	PANEL, TOP	1	68-2113	68-2113	68-2113	68-2113
2	SCREW, SPECIAL	8	34-1530	34-1530	34-1530	34-1530
3	WASHER, SPECIAL	8	20-907	20-907	20-907	20-907
4	NUT, SPECIAL	8	53-586	53-586	53-586	53-586
5	PANEL, SOUND ABSORPTION	2	124-116-5	124-116-5	124-116-5	124-116-5
6	PANEL, DOOR	3	68-2103	68-2103	68-2103	68-2103
7	PANEL, SOUND ABSORPTION	3	124-116-26	124-116-26	124-116-26	124-116-26
8	LATCH	3	178-158-1	178-158-1	178-158-1	178-158-1
9	HINGE	6	17-1309	171309	17-1309	17-1309
10	SCREW, SPECIAL	12	02-775	02-775	02-775	02-775
11	SCREW, SPECIAL	12	02-777	02-777	02-777	02-777
12	SPACER	6	22-1220	22-1220	22-1220	22-1220
13	PANEL, END	1	A68-2114	A68-2114	A68-2114	A68-2114
14	PANEL, SOUND ABSORPTION	1	124-116-27	124-116-27	124-116-27	124-116-27
15	SCREW, SPECIAL	16	34-1512	34-1512	34-1512	34-1512
16	PANEL, END	1	A68-2114-1	A68-2114-1	A68-2114-1	A68-2114-1
14	PANEL, SOUND ABSORPTION	1	124-116-27	124-116-27	124-116-27	124-116-27
17	PANEL, REAR	1	A68-2117	A68-2117	1A68-2117-1	1A68-2117-1
2	SCREW, SPECIAL	7	34-1530	34-1530	34-1530	34-1530
3	WASHER, SPECIAL	7	20-907	20-907	20-907	20-907
4	NUT, SPECIAL	7	53-586	53-586	53-586	53-586
18	CLAMP	2	83-770-1	83-770-1	83-770-1	83-770-1
19	SCREW, SPECIAL	4	H34-579-2	H34-579-2	H34-579-2	H34-579-2
20	SUPPORT	1	A39-6877	A39-6877	A39-6877	A39-6877
21	SCREW, SPECIAL	4	34-1512	34-1512	34-1512	34-1512
22	SUPPORT	1	A39-6913	A39-6913	A39-6913	A39-6913
20	SCREW, SPECIAL	4	34-1512	34-1512	34-1512	34-1512
23	SUPPORT	1	A39-6878	A39-6878	A39-6878	A39-6878
20	SCREW, SPECIAL	4	34-1512	34-1512	34-1512	34-1512
24	SUPPORT	4	A39-6524	A39-6524	A39-6524	A39-6524
20	SCREW, SPECIAL	14	34-1512	34-1512	34-1512	34-1512
25	SEAL, COOLER	AR	125-909	125-909	125-909	125-909
26	SEAL, DOOR	AR	125-921	125-921	125-921	125-921
27	DUCT, QUIET, OUTLET	1		A68-3107		
28	PANEL, SIDE	1		Inc. A to B		
29	PANEL, SIDE	1		68-3107—A		
30	COVER, TOP	1		68-3108		
31	PANEL, BAFFLE	1		68-3073		
32	SUPPORT, BAFFLE	1		68-3071		
33	SUPPORT, BRACE	2		39-6615		
34	SCREW, SPECIAL	20		39-6616		
35	SCREW, CAP	7		34-1407-6—B		
36	NUT	7		02-39		
37	DUCT	1		04-167		
19	SCREW, SPECIAL	7		68-3106	68-3106	68-3106
38	PANEL, SOUND ABSORPTION	3	H34-579-2	H34-579-2	H34-579-2	H34-579-2
39	DUCT, INLET	1		124-116-7		
20	SCREW	8	A68-3113	A68-3113	A68-3113	A68-3113
40	NUT	8	34-1512	34-1512	34-1512	34-1512
41	WASHER, FLAT	8	04-155	04-155	04-155	04-155
42	PANEL, SOUND ABSORPTION	2	06-3	06-3	06-3	06-3
			124-116-28	124-116-28	124-116-28	124-116-28

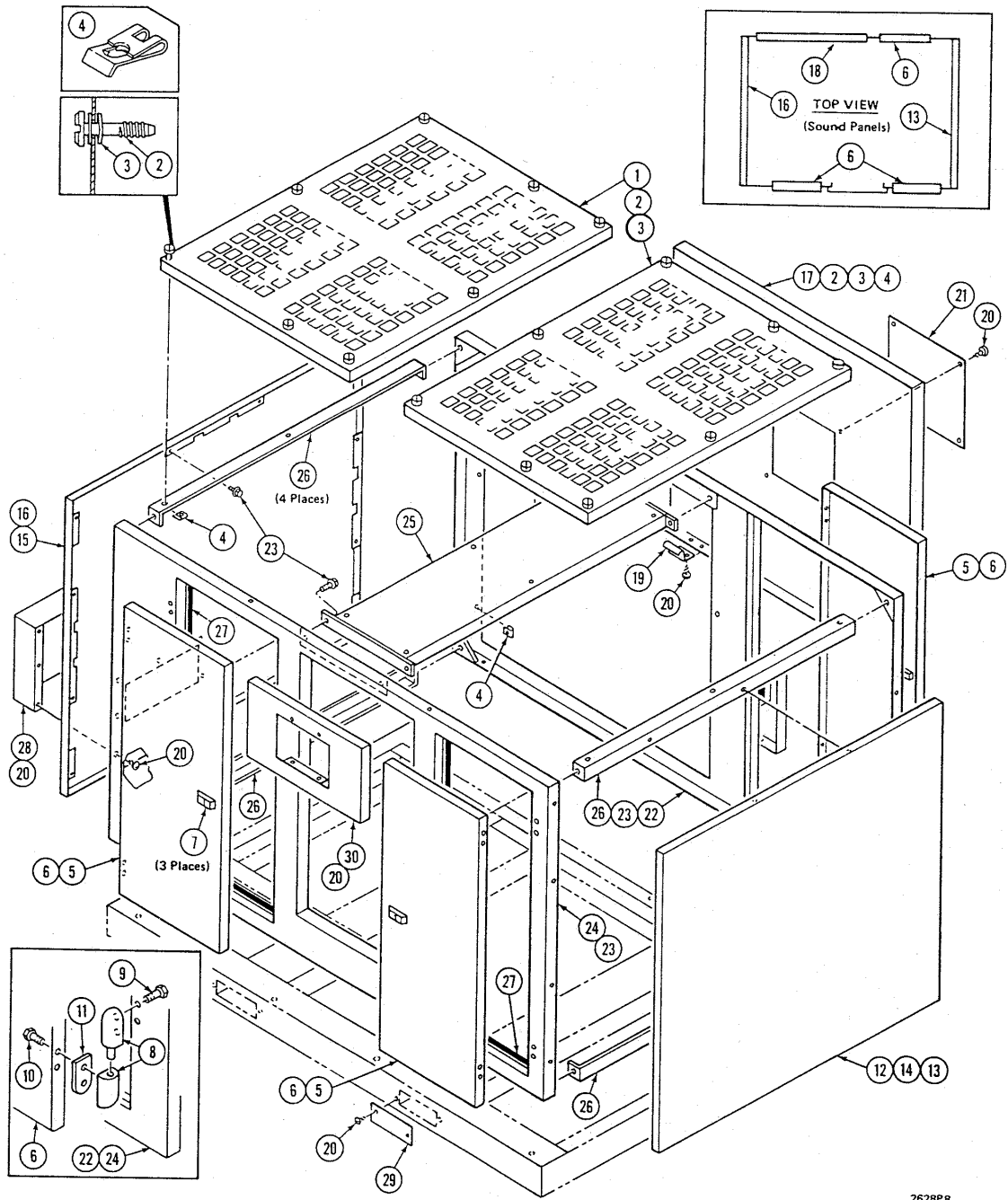
PARTS LIST GROUPS AND COMPONENTS

MODEL
WE125-150-200SSII

PART NUMBERS

GROUP NO. 9 HOUSING – AIR COOLED			STANDARD	STANDARD	STANDARD	STANDARD
REF	PART DESCRIPTION	QTY				
			12G68-2113	4G68-2113 A68-3107	13G68-2113	6G68-2113 A68-2248
			WE125SSII	WE125SSII	WE200SSII	WE200SSII
			WE150SSII	WE150SSII QUIET		QUIET
43	PANEL, SOUND ABSORPTION	2	124-116-29	124-116-29	124-116-29	124-116-29
44	COVER	4		14-1837		14-1837
19	SCREW, SPECIAL	8		H34-579-2		H34-579-2
45	INSTRUMENT PANEL, SUPPORT	1	A151-480	A151-480	A151-480	A151-480
19	SCREW, SPECIAL	4	H34-579-2	H34-579-2	H34-579-2	H34-579-2
46	DUCT, QUIET, OUTLET	1				A68-2248 Inc. A to B
47	PANEL, BOTTOM	1				222-3956—A
48	PANEL, TOP	2				222-3941
49	PANEL, SIDE	1				222-3942
50	PANEL, SIDE	1				222-3943
51	BAFFLE	1				222-3944
52	BAFFLE	4				222-3945
53	SUPPORT	2				222-3946
54	SCREW, CAP	20				02-34
55	NUT	20				04-21
56	WASHER, LOCK	20				05-51-1
57	SCREW, SPECIAL	22				34-1512
58	PANEL, SOUND ABSORPTION	2				124-116-22
59	PANEL, SOUND ABSORPTION	1				124-116-23
60	PANEL, SOUND ABSORPTION	4				124-116-24
61	PANEL, SOUND ABSORPTION	2				124-116-25-B

THIS PAGE LEFT INTENTIONALLY BLANK.



2628P8

PARTS LIST GROUPS AND COMPONENTS

MODEL
WE125-150-200SSII

PART NUMBERS

GROUP NO. 9A HOUSING – WATER COOLED			STANDARD	STANDARD	STANDARD	STANDARD
REF	PART DESCRIPTION	QTY	5G68-2113-1 WE125SSII WE150SSII	4G68-2113-1 WE125SSII WE150SSII QUIET	5G68-2113-1 WE200SSII	4G68-2113-1 WE200SSII QUIET
1	PANEL, TOP	2	A68-2113-1	A68-2113-1	A68-2113-1	A68-2113-1
2	SCREW, SPECIAL	16	34-1530	34-1530	34-1530	34-1530
3	WASHER, SPECIAL	16	20-907	20-907	20-907	20-907
4	NUT, SPECIAL	16	53-586	53-586	53-586	53-586
5	PANEL, DOOR	3	68-2103	68-2103	68-2103	68-2103
6	PANEL, SOUND ABSORPTION	3	124-116-26	124-116-26	124-116-26	124-116-26
7	LATCH	3	178-158-1	178-158-1	178-158-1	178-158-1
8	HINGE	3	17-1309	17-1309	17-1309	17-1309
9	SCREW, SPECIAL	12	02-775	02-775	02-775	02-775
10	SCREW, SPECIAL	12	02-777	02-777	02-777	02-777
11	SPACE	6	22-1220	22-1220	22-1220	22-1220
12	PANEL, END	1	A68-2114	A68-2114	A68-2114	A68-2114
13	PANEL, SOUND ABSORPTION	1	124-116-27	124-116-27	124-116-27	124-116-27
14	SCREW, SPECIAL	16	34-1512	34-1512	34-1512	34-1512
15	PANEL, END	1	A68-2114-1	A68-2114-1	A68-2114-1	A68-2114-1
16	PANEL, SOUND ABSORPTION	1	124-116-27	124-116-27	124-116-27	124-116-27
17	PANEL, REAR	1	68-3111	68-3111	68-3111	68-3111
18	PANEL, SOUND ABSORPTION	20	124-116-28	124-116-13	124-116-28	124-116-13
2	SCREW, SPECIAL	7	34-1530	34-1530	34-1530	34-1530
3	WASHER, SPECIAL	7	20-907	20-907	20-907	20-907
4	NUT, SPECIAL	7	53-586	53-586	53-586	53-586
19	CLAMP	2	83-770-1	83-770-1	83-770-1	83-770-1
20	SCREW, SPECIAL	8	H34-579-2	H34-579-2	H34-579-2	H34-579-2
21	COVER	1	14-1832	14-1832	14-1832	14-1832
20	SCREW, SPECIAL	4	H34-579-2	H34-579-2	H34-579-2	H34-579-2
22	SUPPORT	1	A39-6877	A39-6877	A39-6877	A39-6877
23	SCREW, SPECIAL	4	34-1512	34-1512	34-1512	34-1512
24	SUPPORT	1	A39-6913	A39-6913	A39-6913	A39-6913
23	SCREW, SPECIAL	4	34-1512	34-1512	34-1512	34-1512
25	SUPPORT	1	A39-6878	A39-6878	A39-6878	A39-6878
23	SCREW, SPECIAL	4	34-1512	34-1512	34-1512	34-1512
26	SUPPORT	4	A39-6524	A39-6524	A39-6524	A39-6524
23	SCREW, SUPPORT	14	34-1512	34-1512	34-1512	34-1512
27	SEAL, DOOR	AR	125-921	125-921	125-921	125-921
28	DUCT	1	68-3106	68-3106	68-3106	68-3106
20	SCREW, SPECIAL	7	H34-579-2	H34-579-2	H34-579-2	H34-579-2
29	COVER	4		14-1837		14-1837
20	SCREW, SPECIAL	8		H34-579-2		H34-579-2
30	INSTRUMENT PANEL, SUPPORT	1	A151-480	A151-480	A151-480	A151-480
20	SCREW, SPECIAL	4	H34-579-2	H34-579-2	H34-579-2	H34-579-2

PARTS LIST GROUPS AND COMPONENTS

MODEL
WE125-150-200SSII

PART NUMBERS

GROUP NO. 10 DECALS AND LABELS

			STANDARD		
REF	PART DESCRIPTION	QTY	G62-1180		
	INSTRUCTIONS, GENERAL	1	62-1180		
	DECAL, "DRAIN DAILY"	1	62-341		
	DECAL, INSTRUCTION, "DISCONNECT POWER"	1	62-598		
	DECAL, GROUNDING INSTRUCTIONS	1	62-742		
	DECAL, "HIGH VOLTAGE"	1	62-1019		
	DECAL, AIR CLEANER ELEMENT	1	62-1178		
	DECAL, CORPORATE MARK	2	62-1150-1		
	DECAL, "DO NOT REMOVE....."	1	62-839		
	DECAL, ADD OIL.....	1	62-1108		
	DECAL, OIL FILLTER	1	62-1109		
	DECAL, ROTATION	1	62-1201		
	DECAL, WORKING PRESSURE	1	62-1118		
	DECAL, LION	1	62-1151-1		
	DECAL, WE125SSII	AR			
	DECAL, WE150SSII	AR			
	DECAL, WE200SSII	AR			
	DECAL, WATER COOLED PIPING DIAGRAM	1	62-1181		
	DECAL, "ECONOTROL"	1	62-1142		
	DECAL, "LED DISPLAY"	1	62-1101		
	DECAL, "CAUTION"	1	62-1411		
	DECAL, "ISO 9001"	1	62-1413		
	DECAL, "MADE IN USA"	2	62-1219		
	DECAL, LUBE	1	62-1342		
	DECAL, GROUNDING	2	62-742		
	SCREW	8	03-2001		
	PLATE, SERIAL NUMBER	1	H62-393		
	PLATE, SERIAL NUMBER	1	62-48		

PARTS LIST GROUPS AND COMPONENTS

MODEL
WE125-150-200SSII

PART NUMBERS

GROUP NO. 11 OPTIONS – ACCESSORIES - TOOLS

REF	PART DESCRIPTION	QTY	STANDARD
			G15-1809-1 1G15-1809-2 G60-567 1G61-873 2G69-827-1 3G76-1116
	<u>WE125-150SSII</u>		
	VALVE, SOLENOID, WATER SHUT OFF	1	15-1809-1
	NIPPLE, PIPE	1	013-26-3
	FITTING, CONDUIT	2	188-94
	SEAL, O-RING	2	125-715
	CONDUIT	1	61-596
	FITTING, ADAPTER	1	188-121
	<u>WE200SSII</u>		
	VALVE, SOLENOID, WATER SHUT OFF	1	15-1809-2
	NIPPLE, PIPE	1	013-27-3
	FITTING, CONDUIT	2	188-94
	SEAL, O-RING	2	125-715
	CONDUIT	1	61-596
	FITTING, ADAPTER	1	188-121
	BUSHING, REDUCING	2	013-1085
	METER, TEST, BYPASS CONTROL	1	60-567
	CABLE, HEATER	AR	61-873
	FITTING, CONDUIT	1	188-123
	SEAL, ELECTRICAL INSULATING	1	125-862
	KIT, WIRE SPLICE	1	61-875-1
	SWITCH, THERMOSTAT	1	76-883
	BUSHING, PIPE	1	013-1069
	FITTING, CONDUIT	2	188-94
	SEAL, O-RING	2	125-715
	FITTING, CONDUIT	1	61-596-2
	WIRE, RED	AR	61-888-1
	WIRE, BLACK	AR	61-888-3
	HEATER, RESERVOIR	1	82-77-1
	FITTING, CONDUIT	1	188-128-1
	BUSHING, PIPE	1	013-1069
	FITTING, CONDUIT	1	188-95
	CONDUIT	1	61-596-2
	FITTING, CONDUIT	1	188-94
	SEAL	2	125-715
	NUT, THERMINAL	2	121-170
	SWITCH, TEMPERATURE	1	76-1132-4
	FITTING, CONDUIT	1	188-128
	FITTING, CONDUIT	1	188-95
	CONDUIT	1	61-596-2
	FITTING, CONDUIT	1	188-94
	SEAL	2	125-715
	NUT, TERMINAL	2	121-170
	MONITOR, PHASE 190/240 VOLT	AR	76-1102-1
	MONITOR, PHASE 430/480 VOLT	AR	76-1102
	SWITCH, TEMPERATURE	1	76-1116
	SCREW, SPECIAL	4	03-130
	WELL, THERMAL	1	76-1116-1

PARTS LIST GROUPS AND COMPONENTS

MODEL
WE125-150-200SSII

PART NUMBERS

GROUP NO. 11 OPTIONS – ACCESSORIES - TOOLS

			STANDARD
REF	PART DESCRIPTION	QTY	
			G15-1809-1 1G15-1809-2 G60-567 1G61-873 2G69-827-1 3G76-1116
	TEE, PIPE	1	013-1886
	NIPPLE, PIPE	1	33-100-25
	NIPPLE, PIPE	1	33-100-49
	BUSHING	1	013-1069
	FITTING, CONDUIT	1	188-95
	FITTING, CONDUIT	1	188-94
	CONDUIT	AR	61-596