

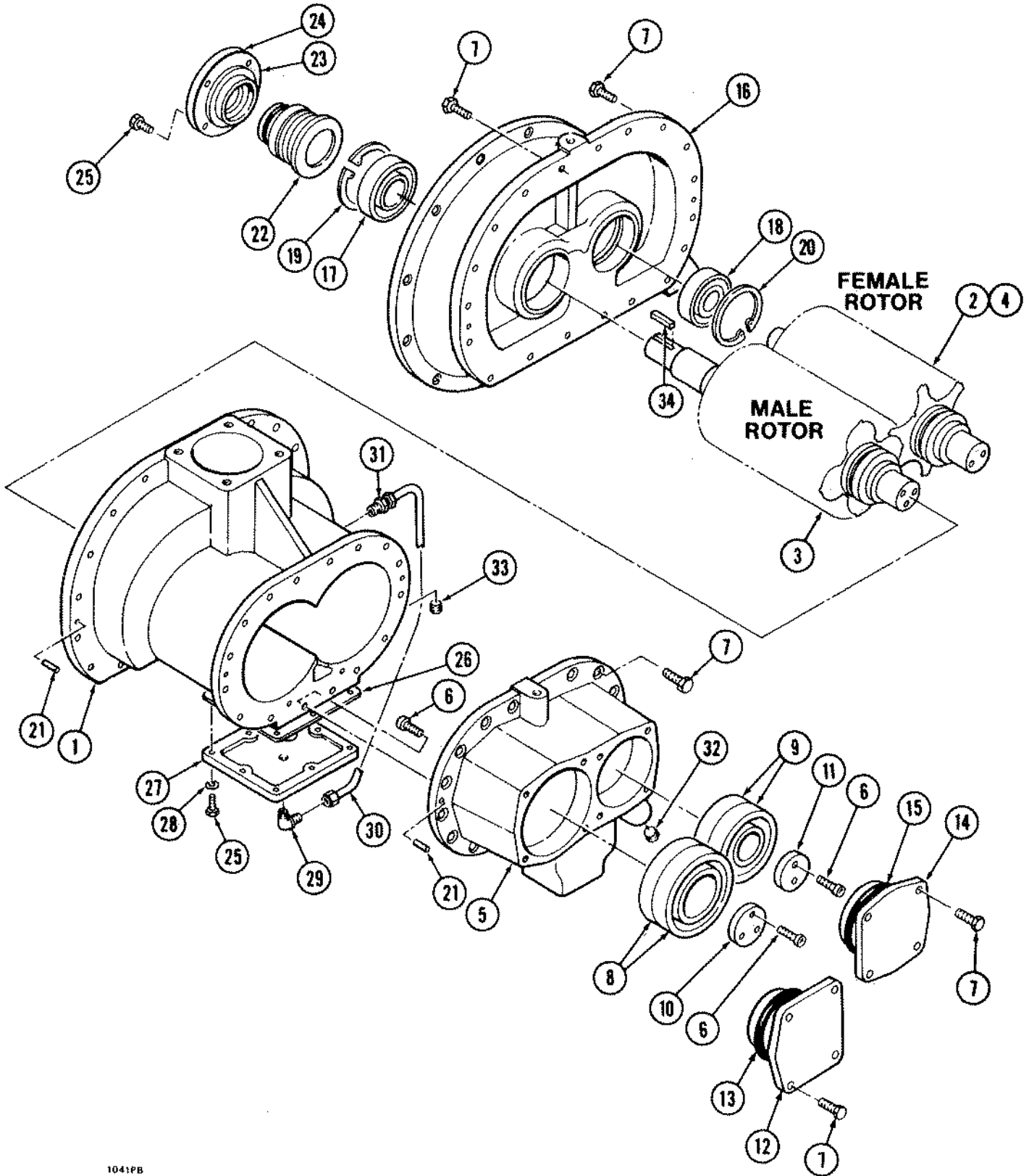


INDEX to COMPOSITE GROUPS

MODEL
B100SS

January, 1982

GROUP NUMBER	GROUP NAME	GROUP NUMBER	GROUP NAME
1	COMPRESSOR-BASIC	16	DELETED
2	AIR RECEIVER - OIL RESERVOIR	17	DELETED
3	AIR CLEANER - INTAKE VALVE ASSEMBLY	18	HOUSING
4	AIR/OIL PIPING AND OIL FILTER-AIR COOLER WITH AFTERCOOLER	19	LABELS AND DECALS (Instruction and Warning)
5	AIR/OIL PIPING AND OIL FILTER - AIR COOLED WITHOUT AFTERCOOLER		
6	DELETED		
7	UNIT BASE - DRIVE COUPLING AND ELECTRIC MOTOR		
8	CONTROL STARTER - AIR COOLED OIL COOLER		
9	DELETED		
10	CONTROL ENCLOSURE		
11	INSTRUMENT PANEL		
12	CONTROL, THIRD MODE - AUTOMATIC DUAL		
13	OIL COOLER, AIR COOLED WITH AFTERCOOLER		
14	OIL COOLER, AIR COOLED WITHOUT AFTERCOOLER		
15	DELETED		





GROUPS AND COMPONENTS

Group No. 1

COMPRESSOR-BASIC

MODEL

B100SS

PART NUMBERS

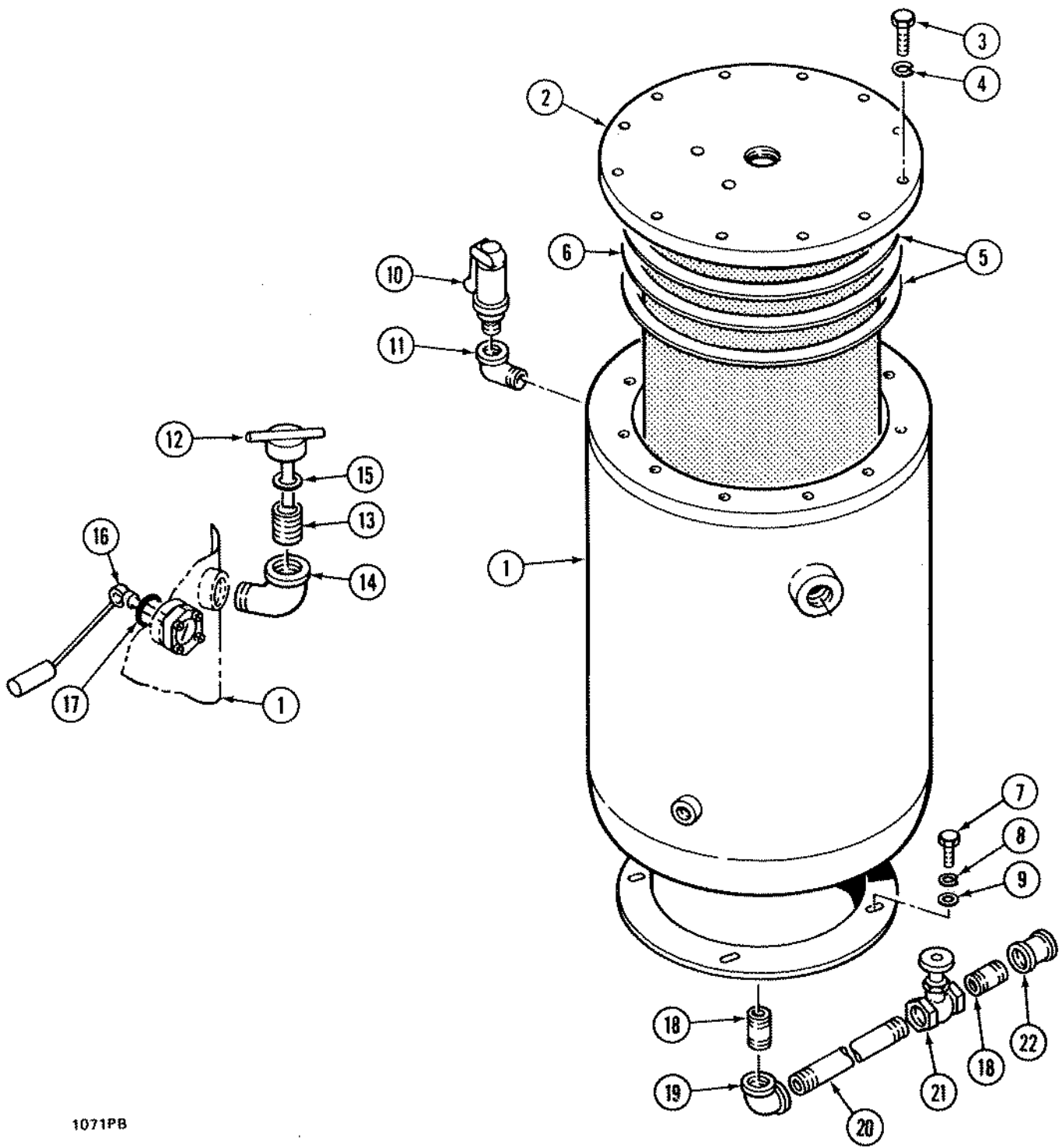
B100SS

A219-45

Ref.	Part Description	Qty.				
	AIR END ASSEMBLY, without Intake Valve	1	A219-45			
1	CYLINDER, (NSS)	1	1-747-1			
2	SET, Rotor (NSS)	1	A204-624 inc. A & B			
3	ROTOR, Male (NSS)	1	101-127--A			
4	ROTOR, Female (NSS)	1	101-128--B			
5	RETAINER, Outlet Casing & Bearing (NSS)	1	31-699			
6	SCREW, Cap, Allen Head	2	34-680			
7	SCREW, Cap	14	02-71			
8	BEARING, Male Rotor (NSS)	2	181-407			
9	BEARING, Female Rotor (NSS)	2	181-406			
10	PLATE, Bearing Retainer Male	1	38-917			
6	SCREW, Cap	3	34-680			
11	PLATE, Bearing Retainer Female	1	38-916			
6	SCREW, Cap	2	34-680			
12	COVER, Male Bearing	1	14-1569			
13	SEAL, O-Ring	1	125-826-11			
7	SCREW, Cap	4	02-71			
14	COVER, Female Bearing	1	14-1381			
15	SEAL, O-Ring	1	125-826-10			
7	SCREW, Cap	4	02-71			
16	RETAINER, Inlet Casting & Bearing (NSS)	1	31-738			
7	SCREW, Cap	20	02-71			
17	BEARING, Male Rotor (NSS)	1	181-405			
18	BEARING, Female Rotor (NSS)	1	181-404			
19	RING, Retainer (NSS)	1	64-281			
20	RING, Retainer (NSS)	1	64-270			
21	PIN, Taper (NSS)	4	010-101			
22	SEAL, Rotary	1	125-693-1			
23	GASKET, Rotary Seal	1	16-1744			
24	RETAINER, Rotary Seal	1	31-736			
25	SCREW, Cap	4	02-37			
26	GASKET, Oil Gallery	1	16-1745			
27	COVER, Oil Gallery	1	14-1382-2			
25	SCREW, Cap	8	02-37			
28	WASHER, Lock	8	05-51			
29	FITTING, Elbow	1	182-728			
30	TUBE	1	55-1947			
31	FITTING, Straight, Special	1	A182-405-1			
32	PLUG, Pipe	2	011-103			
33	PLUG, Pipe	3	011-101			
34	KEY	1	09-143			

(NSS) Not Serviced Separately

• Part number is same as in



1071PB



GROUPS AND COMPONENTS

AIR RECEIVER-
OIL RESERVOIR

Group No. 2

MODEL

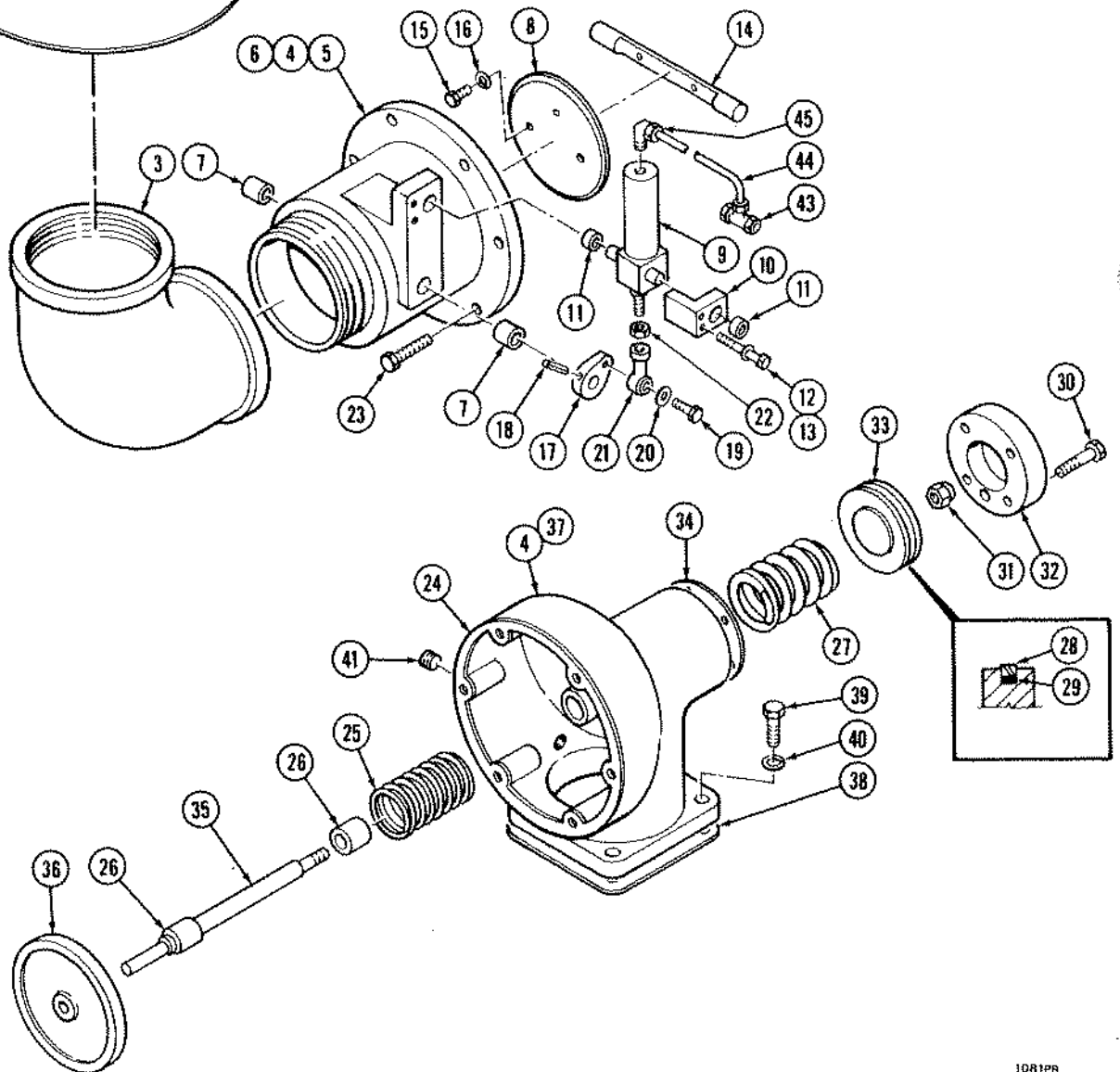
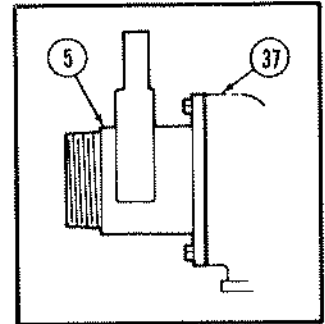
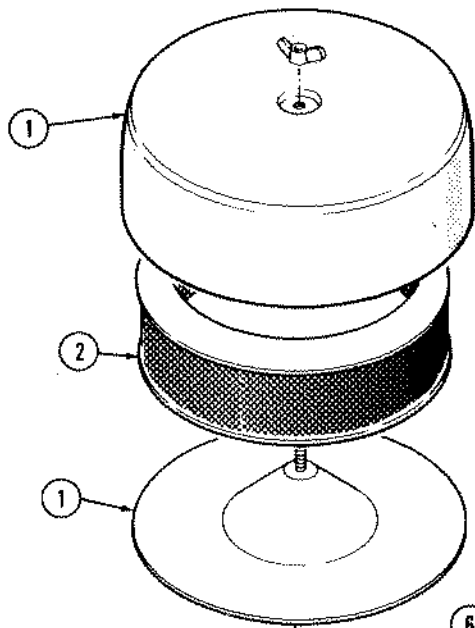
B100SS

PART NUMBERS

B100SS				
1G69-694-1				

Ref.	Part Description	Qty.				
1	AIR RECEIVER-OIL RESERVOIR ASSEMBLY	1	A 69-694-1 inc. A to B			
2	COVER, Air Receiver	1	14-1494--A			
3	BOLT, Cover	12	34-1220-3			
4	WASHER, Lock	12	05-85			
5	GASKET	1	16-1712--B			
6	ELEMENT, Separator	1	43-793			
5	GASKET, Separator Element	2	16-1712			
7	SCREW, Cap	4	02-36			
8	WASHER, Lock	4	05-51			
9	WASHER, Flat	4	06-69			
10	VALVE, Pressure Relief	1	15-982			
11	ELBOW, Pipe, Street	1	013-506			
12	CAP, Oil Filler	1	8A4-268			
13	NIPPLE, Pipe	1	013-28			
14	ELBOW, Pipe, Street	1	013-508			
15	GASKET, Oil Filler	1	16-1352			
16	GAGE, Oil Level	1	60-513 Inc. C			
17	GASKET, Oil Level Gage	1	16-1927			
18	NIPPLE, Pipe	1	013-114			
19	ELBOW, Pipe	1	013-404			
20	NIPPLE, Pipe	1	013-120			
18	NIPPLE, Pipe	1	013-114			
21	VALVE, Drain	1	H15-669			
22	COUPLING, Pipe	1	013-704			
	PLUG, Pipe, Receiver Cover	1	011-4			

• Part number is same as in





GROUPS AND COMPONENTS

AIR CLEANER-
INTAKE VALVE ASSEMBLY

Group No. 3

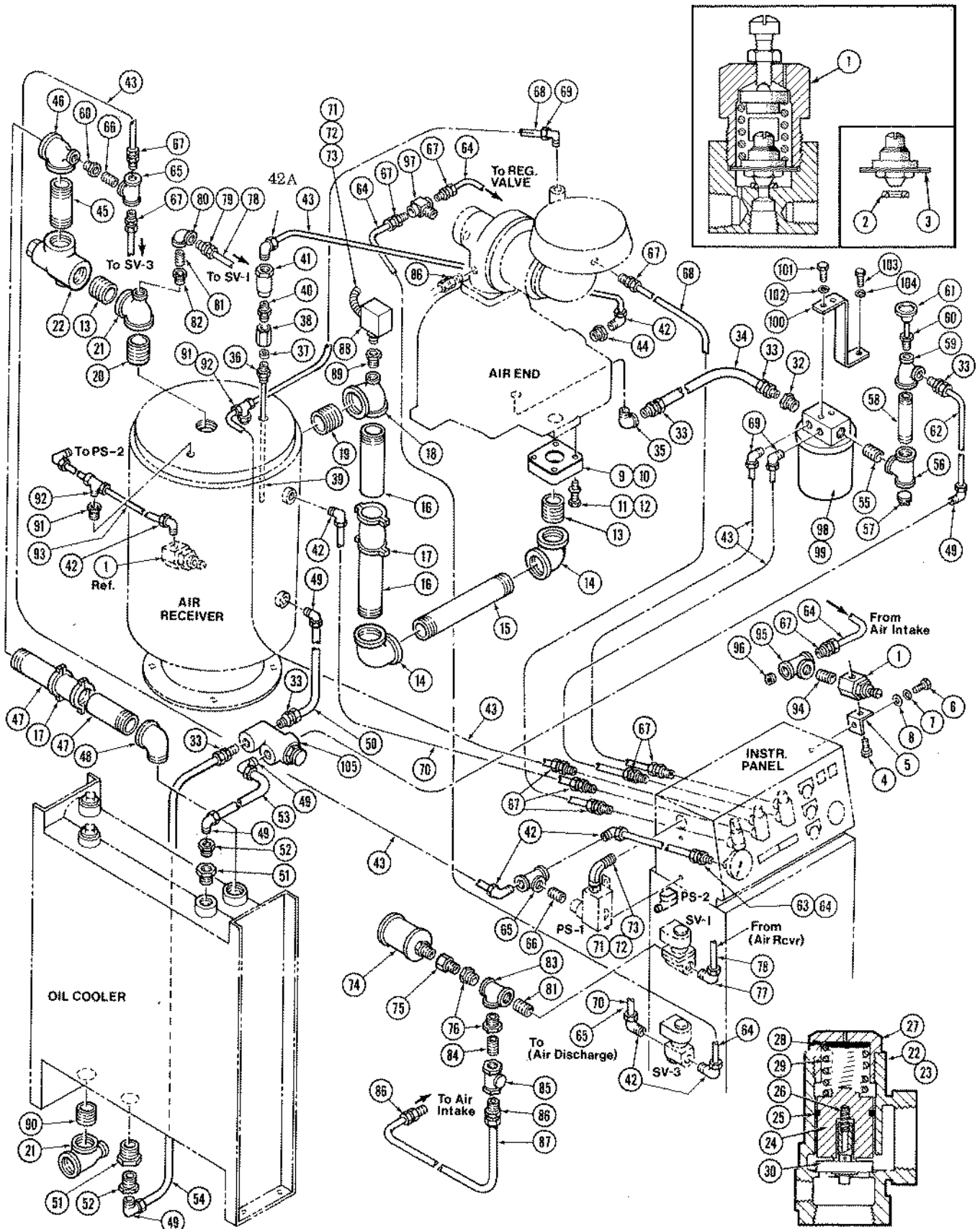
MODEL

B100SS

PART NUMBERS

Ref.	Part Description	Qty.	PART NUMBERS				
			B100SS				
			G43-787-1 1G116-410-1	G43-851 1G116-410-1			
			4039 x 40 & Later	4039 x 39 & Before			
1	AIR CLEANER	1	43-831 Inc. A	43-787-1 Inc. A			
2	ELEMENT, Air Cleaner	1	43-831-1--A	220-163--A			
3	ELBOW, Pipe	1	013-413	●			
4	INTAKE AND STARTING UNLOADER VALVE ASSEMBLY	1	1A116-410-1 Inc. B to E	● Inc. B to E			
5	STARTING UNLOADER VALVE ASSEMBLY	1	A116-411--B Inc. C to D	●--B Inc. C to D			
6	BODY, Starting Unloader Valve	1	116-411--C	●--C			
7	BUSHING	2	21-539-1	●			
8	VALVE	1	15-1633	●			
9	CYLINDER, Air	1	1-806	●			
10	SUPPORT, Air Cylinder	1	39-5598	●			
11	BUSHING, Air Cylinder	2	21-781	●			
12	SCREW, Cap	2	02-12	●			
13	WASHER, Lock	2	05-492	●			
14	SHAFT	1	27-1818	●			
15	SCREW, Cap	2	02-503	●			
16	WASHER, Lock	2	05-50	●			
17	LEVER	1	48-797	●			
18	PIN, Roll	1	17-598-1	●			
19	SCREW, Cap	1	02-19	●			
20	WASHER, Flat	1	06-3	●			
21	ROD END	1	122-9	●			
22	NUT, Jam	1	04-902--D	●--D			
23	SCREW, Cap	6	02-36	●			
24	GASKET	1	16-1967	●			
25	SPRING	1	24-761	●			
26	BUSHING	2	21-996	●			
27	SPRING	1	24-755-1	●			
28	RING, Piston	1	18-589	●			
29	SEAL, O-Ring (Expander)	1	125-826-21	●			
30	SCREW, Cap	4	02-38	●			
31	NUT, Special	1	H53-567	●			
32	RETAINER, Piston (Cover)	1	31-830	●			
33	PISTON	1	8-814	●			
34	GASKET	1	16-1968	●			
35	SHAFT	1	27-1813	●			
36	VALVE	1	15-1623	●			
37	BODY	1	116-410-1--E	●--E			
38	GASKET	1	16-1851	●			
39	SCREW, Cap	4	02-37	●			
40	WASHER, Lock	4	05-51	●			
41	PLUG, Pipe	1	011-2	●			

● Part number is same as in first column.





GROUPS AND COMPONENTS

AIR/OIL PIPING AND OIL
FILTER - AIR COOLED
WITH AFTERCOOLER

Group No. 4

MODEL

B100SS

PART NUMBERS

B100SS					
11G15-1580					

Ref.	Part Description	Qty.
	CONTROL PRESSURE REGULATOR VALVE ASSEMBLY	1
1	VALVE, Control Pressure Regulator	1
2	SEAT	1
3	DIAPHRAGM	1
4	SCREW, Special	1
5	BRACKET	1
6	SCREW, Cap	1
7	WASHER, Lock	1
8	WASHER, Flat	1
9	FLANGE, Discharge	1
10	GASKET	1
11	SCREW, Cap	4
12	WASHER, Lock	4
13	NIPPLE, Pipe	1
14	ELBOW, Pipe	1
15	NIPPLE, Pipe	1
14	ELBOW, Pipe	1
16	NIPPLE, Pipe	1
17	COUPLING, Special	1
16	NIPPLE, Pipe	1
18	TEE, Pipe, Reducing	1
19	NIPPLE, Pipe	1
20	NIPPLE, Pipe	1
21	TEE, Pipe, Reducing	1
13	NIPPLE, Pipe	1
22	VALVE, Minimum Pressure	1
23	BODY, Minimum Pressure Valve	1
24	PISTON	1
25	SEAL, O-Ring	1
26	SPRING, Small	1
27	CAP	1
28	SPACER	1
29	SPRING, Large	1
30	PISTON, Check Valve	1
32	BUSHING, Pipe	1
33	FITTING, Straight	1
34	TUBE	1
33	FITTING, Straight	1
35	ELBOW, Pipe, Street	1
36	FITTING, Special	1
37	SLEEVE, Rubber	1
38	FITTING, Nut	1
39	TUBE, Steel Separator Drain	1
41	FILTER, Separator Drain	1
42A	FITTING, Elbow	1
42	FITTING, Elbow	1
43	TUBE	2
	FITTING	2
40	VALVE, Check	1
	COUPLING, Pipe	1
	GAGE, Sight (optional)	1

Continued on next page.

• Part number is same as in



GROUPS AND COMPONENTS

AIR/OIL PIPING AND OIL
FILTER - AIR COOLED
WITH AFTERCOOLER

Group No. 4

MODEL

B100SS

Continued from previous page.

PART NUMBERS

B100SS					
11G15-1580					
Ref.	Part Description	Qty.			
44	BUSHING, Pipe	1	013-1063		
45	NIPPLE, Pipe	1	33-86-7		
46	TEE, Pipe, Reducing	1	013-1680		
47	NIPPLE, Pipe	1	33-86-104		
17	COUPLING, Special	1	28-428-1		
47	NIPPLE, Pipe	1	33-86-104		
48	ELBOW, Pipe Street	1	013-509		
49	FITTING, Elbow	1	182-435-4		
50	TUBE	1	55-2259		
33	FITTING, Straight	1	182-436-5		
51	BUSHING, Pipe	1	013-1098		
52	BUSHING, Pipe	1	013-1090		
49	FITTING, Elbow	1	182-435-4		
53	TUBE	1	55-2260		
49	FITTING, Elbow	1	182-435-4		
33	FITTING, Straight	1	182-436-5		
54	TUBE	1	55-2261		
49	FITTING, Elbow	1	182-435-4		
52	BUSHING, Pipe	1	013-1090		
51	BUSHING, Pipe	1	013-1098		
55	NIPPLE, Pipe	1	013-7B		
56	TEE, Pipe	1	013-607		
57	PLUG, Pipe	1	011-207		
58	NIPPLE, Pipe	1	013-181		
59	TEE, Pipe, Reducing	1	013-1644		
60	BUSHING, Pipe	1	013-1065		
61	THERMOMETER	1	60-449		
33	FITTING, Straight	1	182-436-5		
62	TUBE	1	55-2258		
49	FITTING, Elbow	1	182-435-4		
63	FITTING, Straight	1	182-611-1		
64	TUBE	1	55-1654-13		
42	FITTING, Elbow	1	H182-383		
65	TEE, Pipe	1	013-802		
66	NIPPLE, Pipe	1	013-2A		
67	FITTING, Straight	1	H182-358		
68	TUBE	1	55-1654-14		
67	FITTING, Straight	1	H182-358		
67	FITTING, Straight	2	H182-358		
43	TUBE	2	55-1654-6		
69	FITTING, Elbow	2	H182-393		
67	FITTING, Straight	2	H182-358		
43	TUBE	1	55-1654-6		
70	TUBE	1	55-1654-15		
42	FITTING, Elbow	1	H182-383		
71	FITTING, Elbow, Conduit	1	H121-120		
72	CONDUIT	1	61-563		
73	FITTING, Conduit	1	121-124		
74	MUFFLER	1	78-169		
75	FITTING, Special	1	182-807		
76	BUSHING, Pipe	1	013-1063		

Continued on next page.

• Part number is same as in



GROUPS AND COMPONENTS

AIR/OIL PIPING AND OIL
FILTER - AIR COOLED
WITH AFTERCOOLER

Group No. 4

MODEL

B100SS

PART NUMBERS

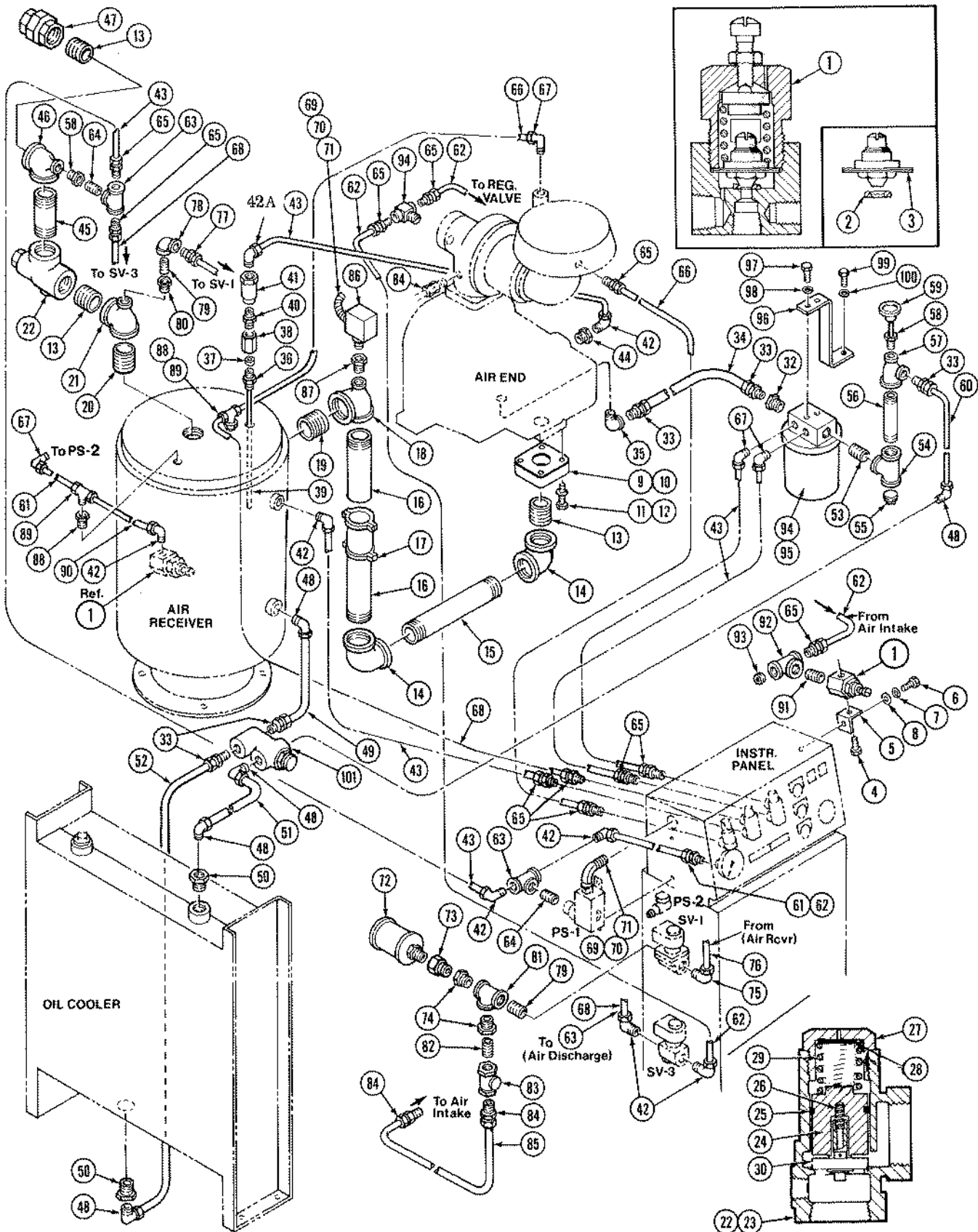
B100SS

11G15-1580

Continued from previous page.

Ref.	Part Description	Qty.				
77	FITTING, Elbow	1	H182-401			
78	TUBE	1	55-38-6			
79	FITTING, Straight	1	H182-390			
80	ELBOW, Pipe	1	013-403			
81	NIPPLE, Pipe	1	013-3			
82	BUSHING, Pipe	1	013-1068			
83	TEE, Pipe	1	013-603			
84	NIPPLE, Pipe	1	013-2A			
85	VALVE, Check	1	15-1646			
86	FITTING, Straight	1	182-232			
87	TUBE	1	55-708-14			
88	SWITCH, Air/Oil High Temperature Shut Down	1	76-700			
89	BUSHING, Pipe	1	013-1066			
71	FITTING, Elbow, Conduit	1	H121-120			
72	CONDUIT	1	61-563			
73	FITTING, Elbow, Conduit	1	H121-120			
90	NIPPLE, Pipe	1	013-9C			
21	TEE, Pipe, Reducing	1	013-1679			
91	BUSHING, Pipe	2	013-1061			
92	FITTING, Tee	2	H182-360			
42	FITTING, Elbow	1	H182-383			
93	TUBE	1	55-1654-7			
94	NIPPLE, Pipe	1	013-1			
95	TEE, Pipe	1	013-601			
96	ORFICE	1	54-416-1			
67	FITTING, Straight	2	H182-358			
64	TUBE	1	55-1654-13			
97	VALVE, Shuttle	1	15-1179			
64	TUBE	1	55-1654-13			
67	FITTING, Straight	1	H182-358			
42	FITTING, Elbow	2	H182-383			
70	TUBE	1	55-1654-15			
67	FITTING, Straight	1	H182-358			
65	TEE, Pipe	1	013-602			
66	NIPPLE, Pipe	1	013-2A			
60	BUSHING, Pipe	1	013-1065			
67	FITTING, Straight	2	H182-358			
43	TUBE	1	55-1654-6			
42	FITTING, Elbow	1	H182-383			
68	TUBE	1	55-1654-14			
69	FITTING, Elbow	1	H182-393			
98	OIL FILTER	1	43-581			
99	ELEMENT, Oil Filter	1	43-582-1--G			
100	SUPPORT, Oil Filter	1	39-4734			
101	SCREW, Cap	2	02-20			
102	WASHER, Lock	2	05-50			
103	SCREW, Cap	1	02-70			
104	WASHER, Lock	1	05-53			
105	THERMAL VALVE ASSEMBLY	1	See Group 14			
	PLUG, Pipe, Receiver Cover	1	011-4			

• Part number is same as in





GROUPS AND COMPONENTS

AIR/OIL PIPING AND OIL
FILTER - AIR COOLED
WITHOUT AFTERCOOLER

Group No. 5

MODEL

B100SS

PART NUMBERS

B100SS

7G15-1580

Continued from previous page.

Ref.	Part Description	Qty.				
45	NIPPLE, Pipe	1	33-86-7			
46	TEE, Pipe, Reducing	1	013-1680			
13	NIPPLE, Pipe	1	013-9			
47	UNION, Pipe	1	013-909			
48	FITTING, Elbow	1	182-435-4			
49	TUBE	1	55-2259			
33	FITTING, Straight	1	182-436-5			
50	BUSHING, Pipe	1	013-1084			
48	FITTING, Elbow	1	182-435-4			
51	TUBE Cooler Outlet	1	55-2309			
48	FITTING, Elbow	1	182-435-4			
33	FITTING, Straight	1	182-436-5			
52	TUBE, Cooler Inlet	1	55-2308			
33	FITTING, Elbow	1	182-436-5			
	ELBOW, Pipe	1	013-406			
	NIPPLE, Pipe	1	33-158-11			
50	BUSHING, Pipe	1	013-1084			
53	NIPPLE	1	013-7B			
54	TEE, Pipe	1	013-607			
55	PLUG, Pipe	1	011-207			
56	NIPPLE, Pipe	1	013-181			
57	TEE, Pipe, Reducing	1	013-1644			
58	BUSHING, Pipe	1	013-1065			
59	THERMOMETER	1	60-449			
33	FITTING, Straight	1	182-436-5			
60	TUBE	1	55-2258			
48	FITTING, Elbow	1	182-435-4			
61	FITTING, Straight	1	182-611-1			
62	TUBE, Air Pressure Gage	1	55-1654-13			
42	FITTING, Elbow	1	H182-383			
63	TEE, Pipe	1	013-602			
64	NIPPLE, Pipe	1	013-2A			
65	FITTING, Straight	1	H182-358			
66	TUBE	1	55-1654-14			
65	FITTING, Straight	1	H182-358			
65	FITTING, Straight	1	H182-358			
43	TUBE	2	55-1654-6			
67	FITTING, Elbow	2	H182-393			
65	FITTING, Straight	2	H182-358			
43	TUBE	1	55-1654-6			
68	TUBE	1	55-1654-15			
42	FITTING, Elbow	1	H182-383			
69	FITTING, Elbow, Conduit	1	H121-120			
70	CONDUIT	1	61-563			
71	FITTING, Conduit	1	121-124			
72	MUFFLER	1	78-169			
73	FITTING, Special	1	182-807			
74	BUSHING, Pipe	2	013-1063			
75	FITTING, Elbow	1	H182-401			
76	TUBE	1	55-38-6			
77	FITTING, Straight	1	H182-390			
78	ELBOW, Pipe	1	013-403			
79	NIPPLE, Pipe	1	013-3			
80	BUSHING	1	013-1068			
81	TEE, Pipe	1	013-603			

Continued on next page.

• Part number is same as in



GROUPS AND COMPONENTS

AIR/OIL PIPING AND OIL
 FILTER - AIR COOLED
 WITHOUT AFTERCOOLER

Group No. 5

MODEL

B100SS

Continued from previous page.

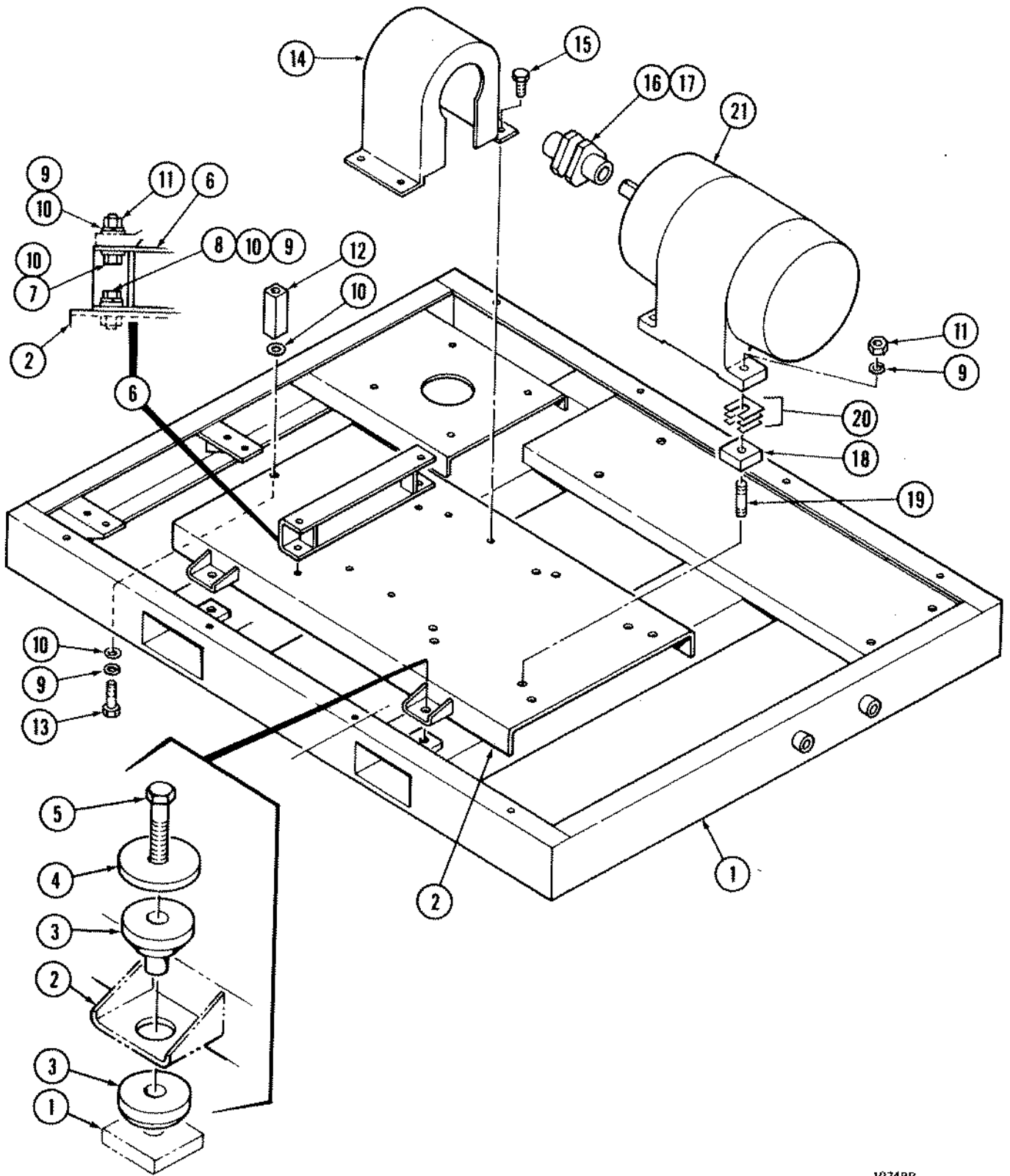
PART NUMBERS

B100SS

7G15-1580

Ref.	Part Description	Qty.				
82	NIPPLE, Pipe	1	013-2A			
83	VALVE, Check	1	15-1646			
84	FITTING, Straight	2	182-232			
85	TUBE	1	55-708-14			
86	SWITCH, Air/Oil High Temperature Shut Down	1	76-700			
87	BUSHING, Pipe	1	013-1066			
69	FITTING, Elbow, Conduit	1	H121-120			
70	CONDUIT	1	61-563			
71	FITTING, Elbow, Conduit	1	H121-120			
88	BUSHING, Pipe	2	013-1061			
89	FITTING, Tee	2	H182-360			
42	FITTING, Elbow	1	H182-383			
90	TUBE	1	55-1654-7			
91	NIPPLE, Pipe	1	013-1			
92	TEE, Pipe	1	013-601			
93	ORIFICE	1	54-416-1			
65	FITTING	2	H182-358			
62	TUBE	1	55-1654-13			
94	VALVE, Shuttle	1	15-1179			
62	TUBE	1	55-1654-13			
65	FITTING, Straight	1	H182-358			
42	FITTING, Elbow	2	H182-383			
68	TUBE	1	55-1654-15			
65	FITTING, Straight	1	H182-358			
63	TEE, Pipe	1	013-602			
64	NIPPLE, Pipe	1	013-2A			
58	BUSHING, Pipe	1	013-1065			
65	FITTING, Straight	2	H182-358			
43	TUBE	1	55-1654-6			
42	FITTING, Elbow	1	H182-383			
66	TUBE	1	55-1654-14			
67	FITTING, Elbow	1	H182-393			
94	OIL FILTER	1	43-581 Inc. G			
95	ELEMENT, Oil Filter	1	43-582-1--G			
96	SUPPORT, Oil Filter	1	39-4734			
97	SCREW, Cap	2	02-20			
98	WASHER, Lock	2	05-50			
99	SCREW, Cap	1	02-70			
100	WASHER, Lock	1	05-53			
101	THERMAL VALVE ASSEMBLY PLUG, Pipe, Receiver Cover	1	See Group 15 011-4			

• Part number is same as in





GROUPS AND COMPONENTS

UNIT BASE-DRIVE COUPLING
AND ELECTRIC MOTOR

Group No. 7

MODEL

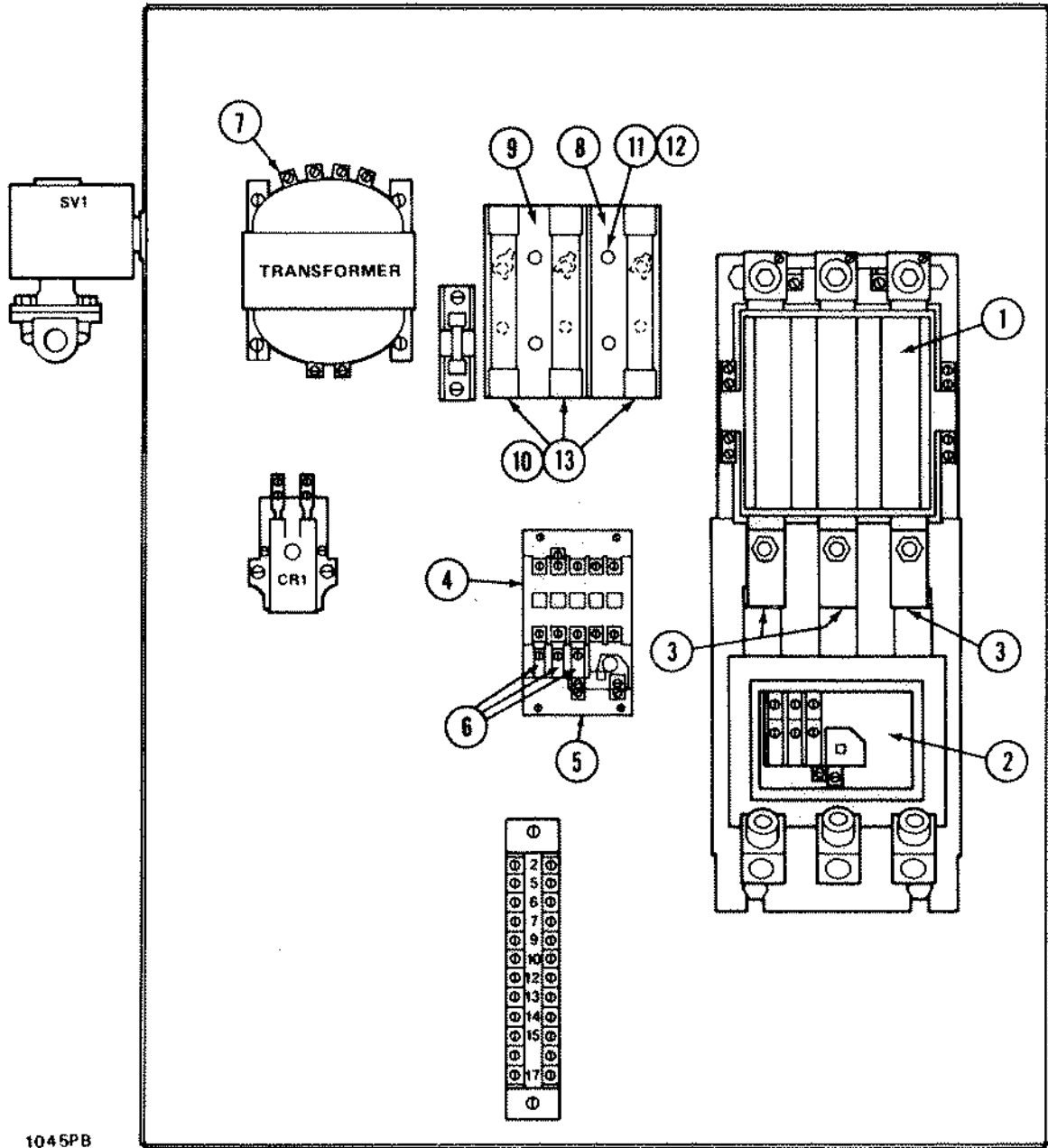
B100SS

PART NUMBERS

B100SS				
G118-1072				
G28-438				

Ref.	Part Description	Qty.				
1	UNIT BASE WELDMENT	1	A118-1072			
2	SUB BASE, Motor and Compressor	1	A118-1073			
3	MOUNTING, Vibration	4	74-231			
4	WASHER, Flat	4	20-1072			
5	BOLT, Center	4	02-107			
6	SUPPORT, Front, Compressor	1	A39-5527			
7	SCREW, Cap	2	02-103			
8	SCREW, Cap	2	02-101			
9	WASHER, Lock	4	05-55			
10	WASHER, Flat	6	06-73			
11	NUT	2	04-108			
12	SPACER, Rear, Compressor	1	22-1077			
13	SCREW, Cap	1	02-114			
9	WASHER, Lock	1	05-55			
10	WASHER, Flat	2	06-73			
14	GUARD, Coupling Weldment	1	A156-697			
15	SCREW, Special	4	H34-1255			
16	COUPLING ASSEMBLY, Drive	1	28-438 Inc. A			
17	COUPLING, Flexible Member (Donut)	1	28-438-1--A			
18	SPACER, Motor	4	22-789			
19	STUD	4	105-555			
9	WASHER, Lock	4	05-55			
11	NUT	4	04-108			
20	SHIM, (.005" Thick, Blue)	A.R.	22-782			
20	SHIM, (.0075" Thick, Translucent)	A.R.	22-782-1			
20	SHIM, (.020" Thick Yellow)	A.R.	22-782-2			
20	SHIM, (.059" Thick Steel)	A.R.	22-782-3			
21	ELECTRIC MOTOR (200V)	1	107-865-24			
21	ELECTRIC MOTOR (230V)	1	107-865-25			
21	ELECTRIC MOTOR (460V)	1	107-865-26			
21	ELECTRIC MOTOR (575V)	1	107-865-27			

• Part number is same as in



1045PB



GROUPS AND COMPONENTS

CONTROL STARTER - AIR
COOLED OIL COOLER

Group No. 8

MODEL

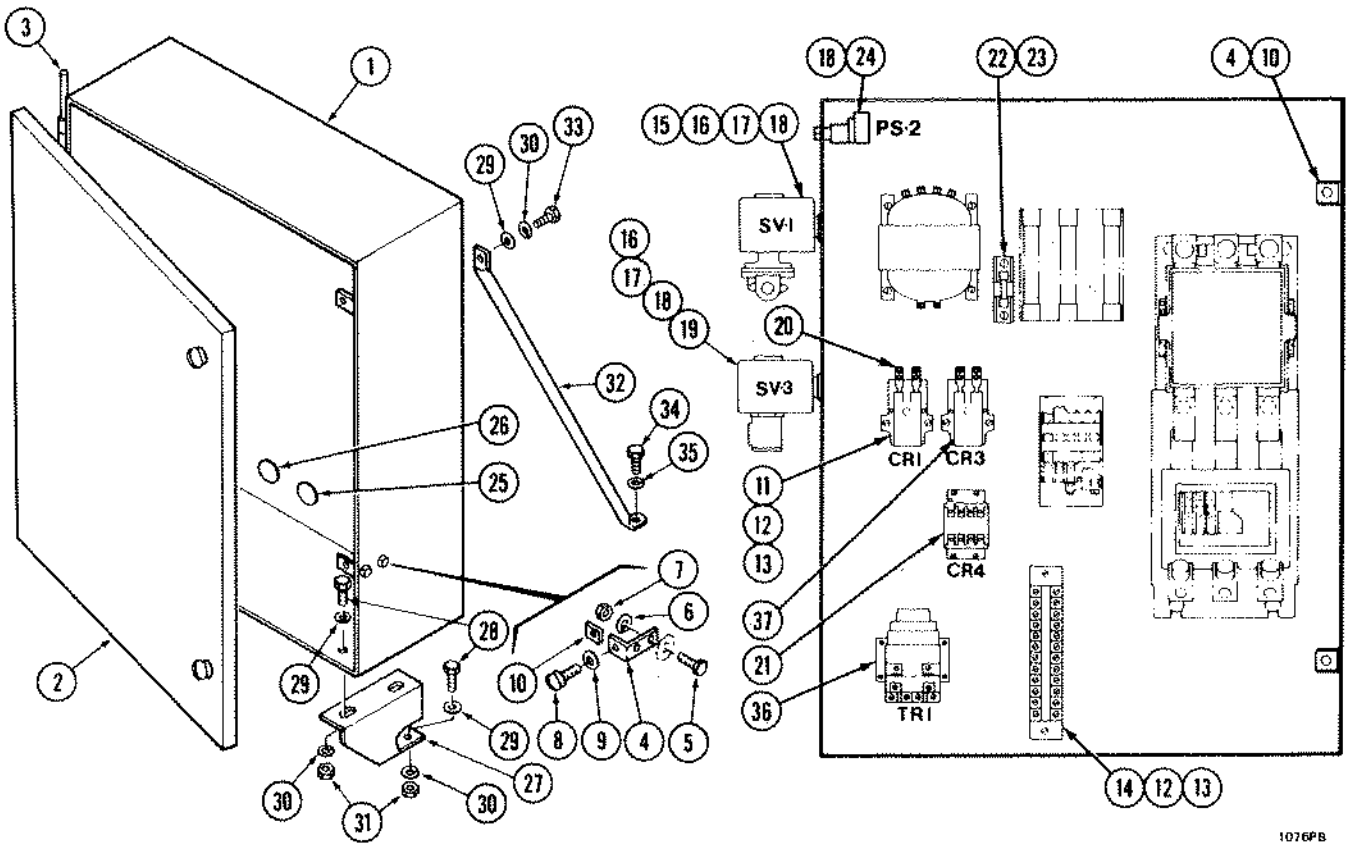
B100SS

PART NUMBERS

B100SS				
B/M Index				

Ref.	Part Description	Qty.				
	<u>CONTROL 230V</u>					
1	STARTER, Compressor Motor	1	76-900-7			
2	RELAY, O.L. Compressor Motor	1	76-901-14			
4	STARTER, Fan	1	76-900-2			
5	RELAY, O.L. Fan	1	76-901-5			
7	TRANSFORMER, Control	1	185-13			
	FUSE CLIP ASSEMBLY	1	1A139-245			
8	BLOCK, Fuse	1	139-245--C			
9	BLOCK, Fuse	1	139-245-1			
10	CLIP, Fuse	3	139-246			
11	SCREW	4	03-95			
12	WASHER, Lock	4	05-103--D			
13	FUSE	3	H139-239- 9			
	<u>CONTROL 460V</u>					
1	STARTER, Compressor Motor	1	76-900-5			
2	RELAY, O.L. Compressor Motor	1	76-901-11			
4	STARTER, Fan	1	76-900-1			
5	RELAY, O.L. Fan	1	76-901-4			
7	TRANSFORMER, Control	1	185-13			
	FUSE CLIP ASSEMBLY	1	A139-245			
8	BLOCK, Fuse	1	139-245--E			
9	BLOCK, Fuse	1	139-245-1			
10	CLIP, Fuse	3	139-246-1			
11	SCREW	4	03-95			
12	WASHER, Lock	4	05-103--F			
13	FUSE	3	H139-239-34			
	<u>CONTROL 575V</u>					
1	STARTER, Compressor Motor	1	76-900-7			
2	RELAY, O.L. Compressor Motor	1	76-901-11			
4	STARTER, Fan	1	76-900-2			
5	RELAY, O.L. Fan	1	76-901-4			
7	TRANSFORMER, Control	1	185-13			
	FUSE CLIP ASSEMBLY	1	A139-245			
8	BLOCK, Fuse	1	139-245--G			
9	BLOCK, Fuse	1	139-245-1			
10	CLIP, Fuse	3	139-246-1			
11	SCREW	4	03-95			
12	WASHER, Lock	4	05-103--F			
13	FUSE	3	H139-239-33			

• Part number is same as in





GROUPS AND COMPONENTS

Group No. 10

CONTROL ENCLOSURE

MODEL

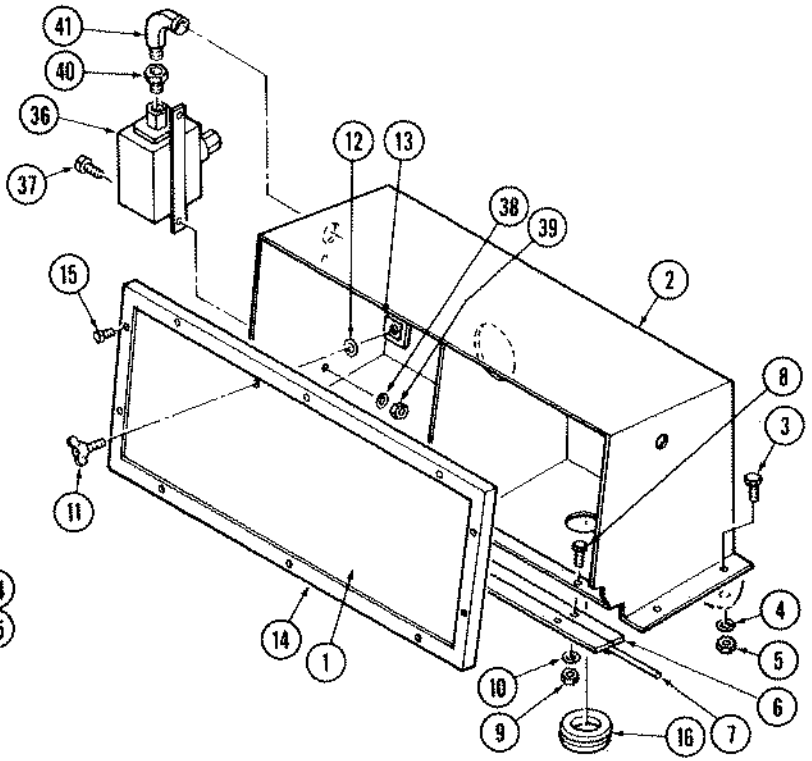
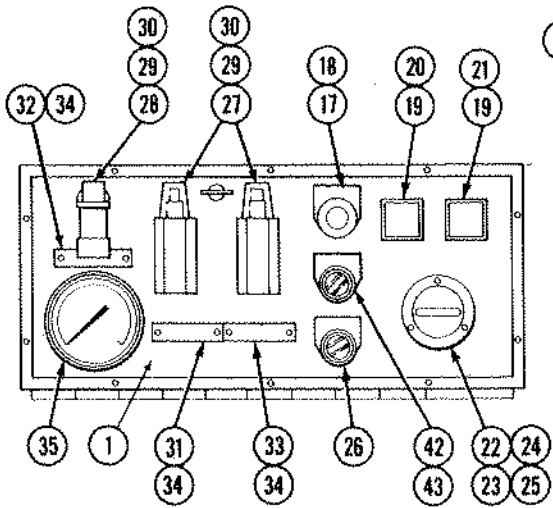
B100SS

PART NUMBERS

B100SS				
52A68-1511-1				

Ref.	Part Description	Qty.				
	CONTROL ENCLOSURE ASSEMBLY	1	1A68-1511 Inc. A to B			
1	ENCLOSURE	1	A68-1511--A			
2	DOOR	1	A68-1512			
3	PIN, Hinge	1	17-746-7			
4	RETAINER, Speed Nut	2	39-5336			
5	SCREW, Cap	4	02-2			
6	WASHER, Lock	4	05-49			
7	NUT	4	04-101			
8	SCREW, Captive	2	34-1399			
9	WASHER, Retainer	2	20-791			
10	NUT, Speed	2	53-693--B			
11	RELAY, Control (CRI)	1	76-816			
12	SCREW, Cap	4	03-93			
13	WASHER, Lock	4	05-103			
14	BOARD, Terminal	1	121-143-1			
12	SCREW, Cap	2	03-93			
13	WASHER, Lock	2	05-103			
15	VALVE, Solenoid Blow Down (SV1)	1	15-1574			
16	ADAPTER, Conduit	1	188-121			
17	NIPPLE, Pipe	1	013-3-3			
18	NUT, Lock, Conduit	3	53-261-1			
19	VALVE, Solenoid, Control (SV3)	1	15-1464			
16	ADAPTER, Conduit	1	188-121			
17	NIPPLE, Pipe	1	013-3-3			
18	NUT, Lock, Conduit	3	53-261-1			
20	TERMINAL, Spade	30	121-96			
21	RELAY, Control (CR4)	1	76-672			
22	BLOCK, Fuse (Control)	1	139-247			
23	FUSE, Control	1	139-244			
24	SWITCH, Pressure (PS2)	1	76-845			
18	NUT, Lock	2	53-261-1			
25	PLUG, Hole	2	19-346			
26	PLUG, Hole	2	19-112-2			
27	SUPPORT	2	39-5305			
28	SCREW, Cap	8	02-34			
29	WASHER, Flat	8	06-69			
30	WASHER, Lock	8	05-51			
31	NUT	8	04-103			
	SUPPORT, Brace	1	39-5750			
32	SUPPORT, Brace	1	39-5634			
33	SCREW, Cap	2	02-36			
30	WASHER, Lock	2	05-51			
29	WASHER, Flat	2	06-69			
34	SCREW, Cap	1	02-187			
35	WASHER, Lock	1	05-53			
36	RELAY, Time Delay (TR1)	1	See Group 13			
37	RELAY, Control (CR3)	1	See Group 13			

• Part number is same as in





GROUPS AND COMPONENTS

Group No. 11

INSTRUMENT PANEL

MODEL

B100SS

PART NUMBERS

Ref.	Part Description	Qty.	PART NUMBERS			
			B100SS			
			5A151-329			
1	INSTRUMENT PANEL WELDMENT	1	1A151-329			
2	HOUSING, Instrument Panel	1	A68-1588			
3	SCREW, Cap	4	02-34			
4	WASHER, Lock	4	05-51			
5	NUT	4	04-103			
6	HINGE	2	221-956-60			
7	PIN, Hinge	1	17-638-41			
8	SCREW, Cap	8	02-3			
9	NUT	8	04-101			
10	WASHER, Lock	8	05-49			
11	SCREW, Wing Head	1	34-1399			
12	WASHER, Screw Retainer	1	20-791			
13	NUT, Speed	1	53-693			
14	MOLDING, Instrument Panel	1	A151-332			
15	SCREW, Special	10	34-1219			
	GROMMET (PS1)	1	150-68			
16	GROMMET	1	C150-7			
17	SWITCH, Pull to Start-Push to Stop	1	76-819			
18	PLATE, Legend	1	160-66			
19	LIGHT, Power on & High Temperature	2	160-63			
20	LENS, Power On	1	160-64			
21	LENS, High Temperature	1	160-64-2			
22	HOURLMETER	1	60-457			
23	GASKET, Hourmeter	1	16-1725			
24	SCREW	3	03-58			
25	NUT	3	04-9			
26	SWITCH, Selector (Oil Drain)	1	76-721-2			
27	INDICATOR, Oil Filter & Oil Separator Restriction	2	43-577			
28	INDICATOR, Air Cleaner Restriction	1	60-414			
29	FITTING, Indicator	5	182-623			
30	NUT, Lock	3	53-261			
31	PLATE, Oil Separator	1	62-662			
32	PLATE, Air Cleaner	1	62-582			
33	PLATE, Oil Filter	1	62-583			
34	SCREW, Machine	6	03-1406			
35	GAGE, Air Pressure	1	60-83-2			
36	SWITCH, Pressure (PS-1)	1	76-911			
37	SCREW, Special	2	03-92			
38	WASHER, Lock	2	05-5			
39	NUT	2	04-13			
40	BUSHING, Conduit	1	121-169			
41	FITTING, Elbow, Conduit	1	121-168			
42	SWITCH, Selector Continuous Run and Automatic Stop	1	76-721-1			
43	SWITCH, Selector Three Position	1	See Group 13			

• Part number is same as in



GROUPS AND COMPONENTS

CONTROL THIRD MODE-
AUTOMATIC DUAL

Group No. 12

MODEL

B100SS

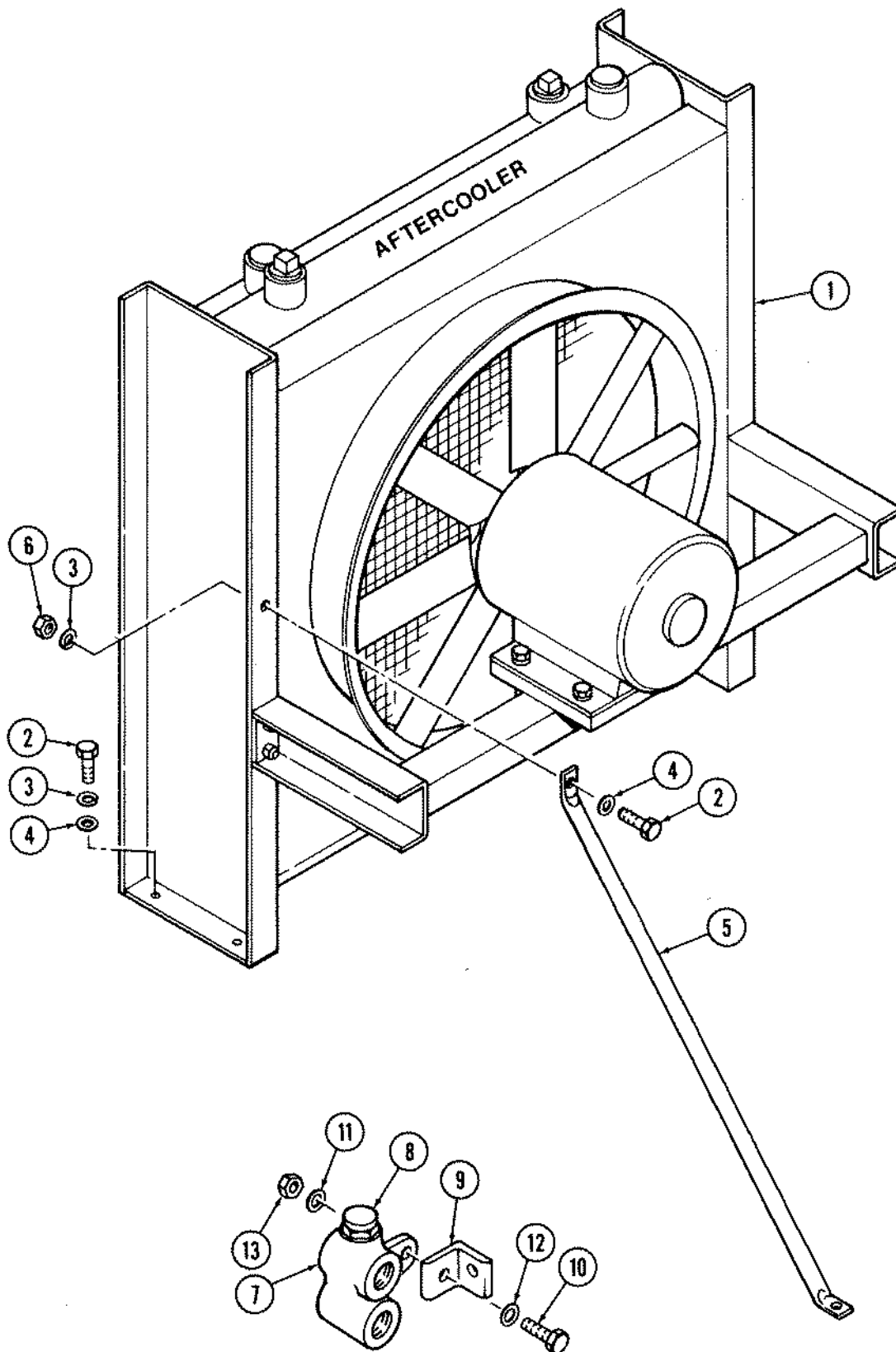
PART NUMBERS

B100SS				
G76-819				

Ref.	Part Description	Qty.
36	RELAY, Time Delay (TR1)	1
	SCREW, Cap	4
	WASHER, Lock	4
43	SWITCH, Selector, Three Position	1
37	RELAY, Control (CR3)	1
	SCREW, Cap	4
	WASHER, Lock	4
	PLATE, Wiring Diagram Three Mode	1
	NOTE: This Group May Be Added to Any Two Mode Controlled Unit To Obtain Auto Dual Operation	
	Reference Numbers 36 and 37 Use Group 10 Illustration	
	Reference Number 43, Use Group 11 Illustration	

• Part number is same as in





1078PB



GROUPS AND COMPONENTS

OIL COOLER, AIR COOLED
WITH AFTERCOOLER

Group No. 13

MODEL

B100SS

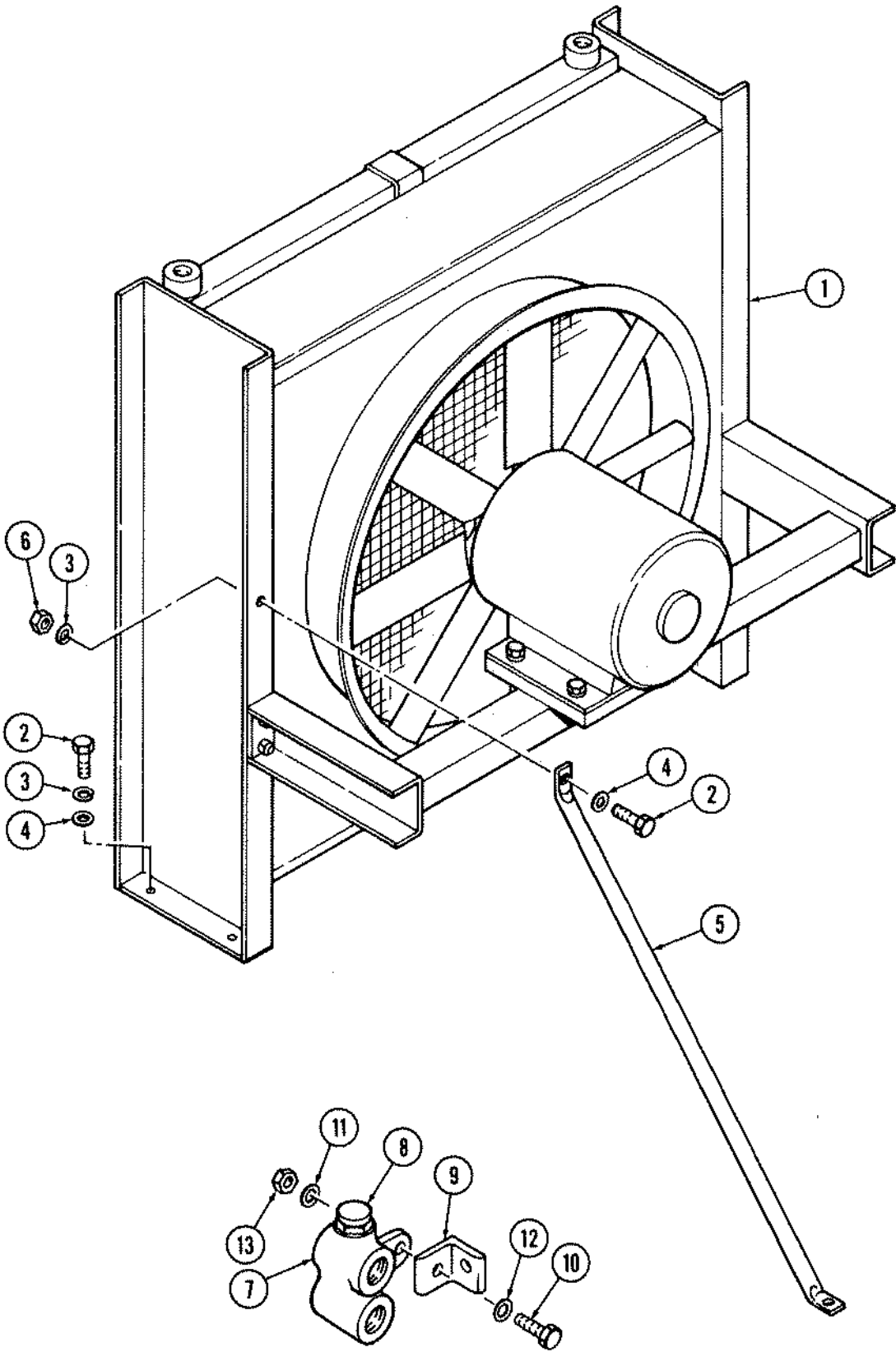
PART NUMBERS

B100SS

G71-849

Ref.	Part Description	Qty.				
1	OIL COOLER - AFTERCOOLER With Fan and Motor 230/480V	1	71-849			
	COOLER, Oil	1	Inc. A to B 220-196			
	COOLER, Air, After	1	220-196-1			
	FAN	1	220-196-2			
	SHROUD	1	220-196-3			
	GUARD, Fan	1	220-196-4			
2	SCREW, Cap	4	02-101			
3	WASHER, Lock	4	05-55			
4	WASHER, Flat	4	06-73			
5	SUPPORT, Oil Cooler	1	39-5612			
2	SCREW, Cap	1	02-101			
3	WASHER, Lock	1	05-55			
4	WASHER, Flat	1	06-73			
6	NUT	1	04-108			
7	BODY, Thermal Valve	1	116-253-2			
8	ELEMENT, Thermal Valve	1	116-255			
9	BRACKET	1	40-1339			
10	SCREW, Cap	2	02-71			
11	WASHER, Lock	2	05-53			
12	WASHER, Flat	2	06-71			
13	NUT	1	04-105			
	MOISTURE, Separator	1	43-815-1			

• Part number is same as in



1079PB



GROUPS AND COMPONENTS

OIL COOLER, AIR COOLED
WITHOUT AFTERCOOLER

Group No. 14

MODEL

B100SS

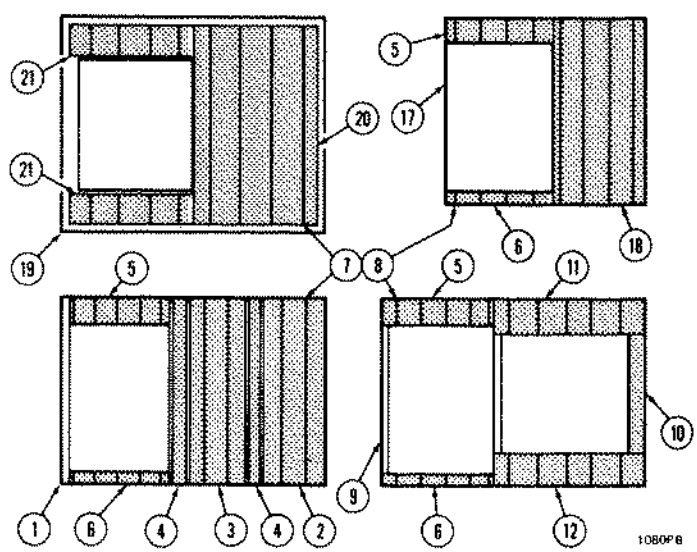
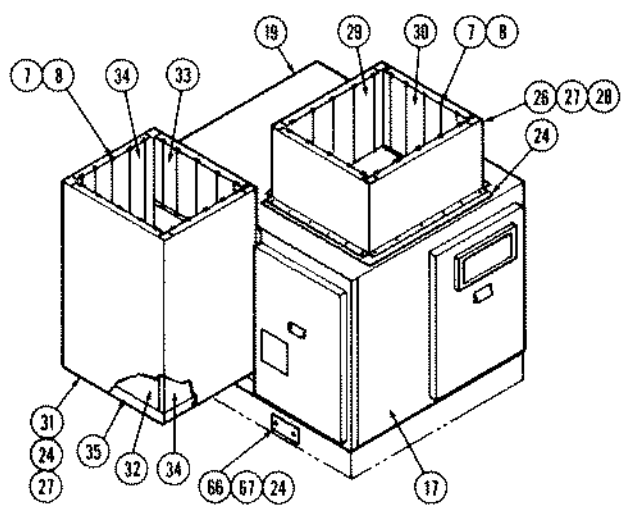
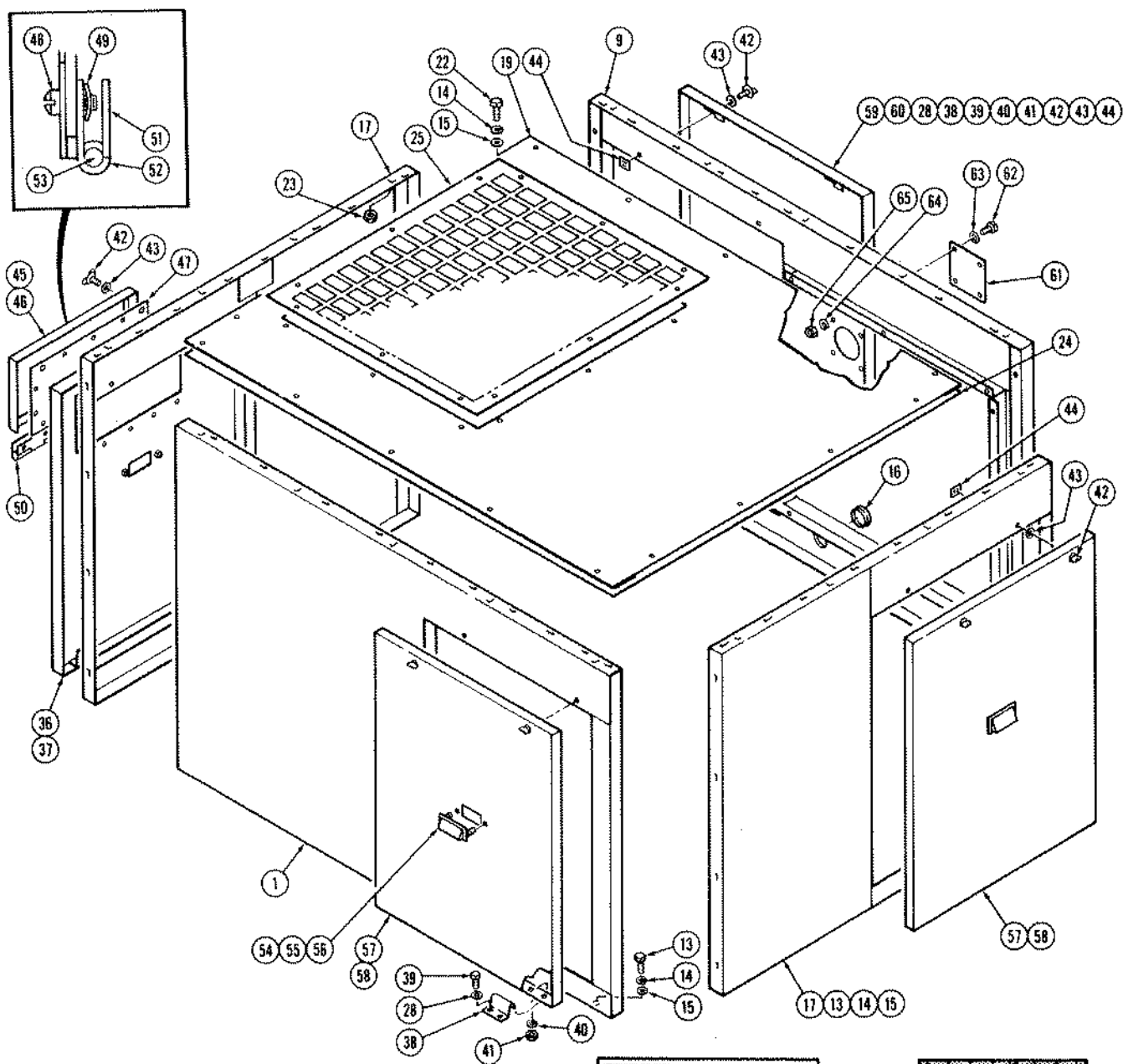
PART NUMBERS

B100SS

G71-843

Ref.	Part Description	Qty.				
1	OIL COOLER, With Fan and Motor 230/460V	1	71-843			
2	SCREW, Cap	4	02-101			
3	WASHER, Lock	4	05-55			
4	WASHER, Flat	4	06-73			
5	SUPPORT, Oil Cooler	1	39-5612			
2	SCREW, Cap	1	02-101			
3	WASHER, Lock	1	05-55			
4	WASHER, Flat	1	06-73			
6	NUT	1	04-108			
7	BODY, Thermal Valve	1	116-253-2			
8	ELEMENT, Thermal Valve	1	116-255			
9	BRACKET	1	40-1339			
10	SCREW, Cap	2	02-71			
11	WASHER, Lock	2	05-53			
12	WASHER, Flat	2	06-71			
13	NUT	1	04-105			

• Part number is same as in





GROUPS AND COMPONENTS

Group No. 18

HOUSING

MODEL

B100SS

PART NUMBERS

Ref.	Part Description	Qty.	PART NUMBERS			
			B100SS	B100SS		
			G68-1590	G68-1741		
			STANDARD HOUSING	QUIET HOUSING		
1	HOUSING, Motor and Air End Side	1	A68-1741	●		
2	INSULATION, Sound Deadening	1		124-81		
3	INSULATION, Sound Deadening	1		124-81-1		
4	INSULATION, Sound Deadening	2		124-81-2		
5	INSULATION, Sound Deadening	1		124-81-3		
6	INSULATION, Sound Deadening	1		124-81-4		
7	CLAMP, Retainer Strap	A.R.		83-679		
8	CLAMP, Clip	14		83-680		
9	HOUSING, Cooler Side	1	A68-1590	●		
5	INSULATION, Sound Deadening	1		124-81-3		
6	INSULATION, Sound Deadening	1		124-81-4		
10	INSULATION, Sound Deadening	1		124-81-5		
11	INSULATION, Sound Deadening	1		124-81-6		
12	INSULATION, Sound Deadening	1		124-81-7		
7	CLAMP, Retainer Strap	A.R.		83-679		
8	CLAMP, Clip	18		83-680		
13	SCREW, Cap	8	02-35	●		
14	WASHER, Lock	8	05-51	●		
15	WASHER, Flat	8	06-69	●		
16	PLUG, Hole	4	19-112-9	●		
17	PANEL, Housing Ends	2	A151-406	●		
5	INSULATION, Sound Deadening	2		124-81-3		
6	INSULATION, Sound Deadening	2		124-81-4		
18	INSULATION, Sound Deadening	2		124-81-8		
7	CLAMP, Retainer Strap	A.R.		83-679		
8	CLAMP, Clip	12		83-680		
13	SCREW, Cap	16	02-35	●		
14	WASHER, Lock	16	05-51	●		
15	WASHER, Flat	16	06-69	●		
19	COVER, Top Panel	1	A14-1596	●		
20	INSULATION, Sound Deadening	1		124-81-9		
21	INSULATION, Sound Deadening	2		124-81-14		
7	CLAMP, Retainer Strap	A.R.		83-679		
8	CLAMP, Clip	12		83-680		
22	SCREW, Cap	18	02-36	●		
14	WASHER, Lock	18	05-51	●		
15	WASHER, Flat	18	06-69	●		
23	NUT	18	04-103	●		
24	FOAM, Vinyl Sealing Strip	A.R.		H62-648		
25	HOUSING, Intake Grill	1	68-1591			
26	HOUSING, Intake Duct	1		A68-1735		
27	SCREWS, Self Tapping	12	34-1407-1	(24) ●		
28	WASHER, Flat	12	06-65			
29	INSULATION, Sound Deadening	2		124-81-10		
30	INSULATION, Sound Deadening	2		124-81-11		
7	CLAMP, Retainer Strap	A.R.		83-679		
8	CLAMP, Clip	20		83-680		
24	FOAM, Vinyl Sealing Strip	A.R.		H62-648		
31	HOUSING, Discharge Duct	1		A68-1730		
27	SCREW, Self Tapping	15		34-1407-1		
32	INSULATION, Sound Deadening	1		124-81-12		
33	INSULATION, Sound Deadening	1		124-81-13		
34	INSULATION, Sound Deadening	2		124-82		
35	INSULATION, Sound Deadening	1		124-81-15		

Continued on next page.

● Part number is same as in first column.



GROUPS AND COMPONENTS

Group No. 18

HOUSING

MODEL

B100SS

PART NUMBERS

Continued from previous page.

Ref.	Part Description	Qty.	PART NUMBERS	
			STANDARD HOUSING	QUIET HOUSING
			B100SS	B100SS
			G68-1590	G68-1741
7	CLAMP, Retainer Strap	A.R.		83-679
8	CLAMP, Clip	20		83-680
24	FOAM, Vinyl Sealing Strip	A.R.		H62-648
36	PANEL, Instrument Panel Side	1	A151-377-1	●
37	INSULATION, Sound Deadening	1		124-81-16
38	CLAMP, Clip	2	83-770	●
39	SCREW, Cap	4	03-92	●
40	WASHER, Lock	4	05-5	●
28	WASHER, Flat	4	06-65	●
41	NUT	4	04-13	●
42	SCREW, Fastener	2	34-1399	●
43	WASHER, Retainer	2	20-791	●
44	NUT, Speed	2	53-693	●
45	PANEL, Window Assembly	1	A151-408	●
			Inc. A to C	inc. A to C
46	FRAME, Window	1	151-408--A	●--A
47	WINDOW	1	151-409	●
48	SCREW, Cap	12	03-75	●
49	NUT	12	53-421	●
42	SCREW, Fastener	2	34-1399	●
43	WASHER, Retainer	2	20-791	●
50	HINGE ASSEMBLY	1	A221-956-116	●
			Inc. B to C	inc. B to C
51	HINGE	1	221-956-116--B	●--B
52	HINGE	1	221-956-117	●
53	PIN, Hinge	1	17-638-47--C	●--C
48	SCREW, Cap	6	03-75	●
49	NUT, Speed	6	53-421	●
44	NUT, Speed	2	53-693	●
54	HANDLE, Pull-Panel	4	50-193	●
55	WASHER, Lock	8	05-25-1	●
56	NUT	8	04-27	●
57	PANEL	2	A151-377	●
58	INSULATION, Sound Deadening	2		124-81-17
38	CLAMP, Clip	4	83-770	●
39	SCREW, Cap	8	03-92	●
40	WASHER, Lock	8	05-5	●
28	WASHER, Flat	8	06-65	●
41	NUT	8	04-13	●
42	SCREW, Fastener	4	34-1399	●
43	WASHER, Retainer	4	20-791	●
44	NUT, Speed	4	53-693	●
59	PANEL (Receiver)	1	A151-416	●
60	INSULATION, Sound Deadening	1		124-81-18
38	CLAMP, Clip	2	83-770	●
39	SCREW, Cap	4	02-92	●
40	WASHER, Lock	4	05-5	●
28	WASHER, Flat	4	06-65	●
41	NUT	4	04-13	●
42	SCREW, Fastener	2	34-1399	●
43	WASHER, Retainer	2	20-791	●
44	NUT, Speed	2	53-693	●

Continued on next page.

● Part number is same as in



GROUPS AND COMPONENTS

Group No. 18

HOUSING

MODEL

B100SS

PART NUMBERS

B100SS	B100SS			
G68-1590	G68-1741			

Continued from previous page.

Ref.	Part Description	Qty.	HOUSING				
			STANDARD	QUIET			
61	WINDOW	1	151-393	•			
62	SCREW, Cap	4	02-3	•			
63	WASHER, Flat	4	06-67	•			
64	WASHER, Lock	4	05-49	•			
65	NUT	4	04-601	•			
66	PLATE, Cover	4			39-5722		
67	SCREW, Self Tapping	8			34-1448		
24	FOAM, Vinyl Sealing Strip	A.R.			H62-648		

• Part number is same as in



GROUPS AND COMPONENTS

LABELS AND DECALS
(Instruction and Warning)

Group No. 19

MODEL

B100SS

PART NUMBERS

B100SS

100G62-48

Ref.	Part Description	Qty.				
	PLATE, Operating and Liquid Capacity Instruction	1	62-597			
	LABEL, High Temperature Shutdown Instructions	1	62-559			
	DECAL, Rotation Direction "Arrow"	1	62-1010			
	TAG, Electrical Warning	2	62-598			
	TAG, Lubrication	1	62-646			
	LABEL, Oil Drain Instruction	1	62-661			
	DECAL, "Warning, this Unit Must Be Grounded"	1	62-742			
	DECAL, "Le ROI"	1	62-630-3			
	DECAL, "B100SS"	1	62-854			
	DECAL, 2 Mode Wiring	1	62-844			
	DECAL, 3 Mode Wiring	1	62-845			

• Part number is same as in