



49112527
Revision A
August 2015

Airscout Flow Meter Terminal

User Manual



Save These Instructions

IR Ingersoll Rand®

TABLE OF CONTENTS

1.0 SAFETY INFORMATION	3	7.0 DISPLAY	11
1.1 SAFETY SYMBOLS	3	7.1 DISPLAY STATUS ICONS.....	11
2.0 INTRODUCTION	4	7.2 LCD DISPLAY	11
3.0 PRODUCT OVERVIEW	4	7.3 DATA LOGGER	11
4.0 QUICK START	5	7.4 KEYPAD	11
5.0 MECHANICAL INSTALLATION	6	7.5 MENU	11
6.0 ELECTRICAL CONNECTIONS	7	8.0 AIRSCOUT STUDIO SOFTWARE	13
6.1 CONNECTIONS	7	9.0 SERVICE	14
6.2 ELECTRICAL OVERVIEW.....	7	9.1 RECALIBRATION	14
6.3 AIRSCOUT CONNECTIONS	7	10.0 SPECIFICATIONS	14
6.4 ANALOG INPUTS.....	8	11.0 ORDER INFORMATION AND ACCESSORIES	15
6.5 ETHERNET CONVERTER.....	8	12.0 CONNECTION EXAMPLES	16
6.6 SCHEMES.....	9	13.0 ZERO AND SPAN CALCULATION	17
6.7 CONNECTION TO X-SERIES CONTROLLER ...	10		

1.0 SAFETY INFORMATION

1.1 SAFETY SYMBOLS

	<p>Compressed air can be dangerous! Please familiarize yourself with the forces under pressurized conditions. Respect the local guidelines and regulations for working with pressurized equipment.</p>
	<p>Gas flow through pipes follows certain physical laws. These physical laws have serious consequences for the installation requirements. Familiarize yourself with these laws to make sure that the product is installed correctly. Always make sure that upstream length, downstream length, flow, pressure, temperature and humidity conditions are within specifications.</p>
	<p>Precision instruments need maintenance. Check your flow meter regularly and make sure it remains clean. When polluted, gently clean the sensor using demineralised water or cleaning alcohol. Airscout flow meters require calibration.</p>
	<p>Not intended for fiscal metering or billing. Our flow meters are not certified for fiscal metering. Laws on fiscal metering and billing may vary per country or state.</p>
	<p>Do not overestimate the results. Ingersoll Rand does not take any responsibility for the correctness of measurement results under field conditions. The practical measurement uncertainty of a flow meter in the field may vary, depending on how well it is installed, due to the nature of gas flow. The piping table provides guidelines on how to optimize the field accuracy. Our products are not intended to be used as a single means to determine compressor capacity.</p>
	<p>Do not open the device. Our instruments are assembled with high precision. Opening this device is dangerous and may destroy the instruments. The IP rating might be compromised. Warranty is voided when you open the instrument.</p>
	<p>Feedback leads to product improvement. Please share your experience with us, as we are continuously improving our products in our commitment to quality, reliability and ease of use.</p>

2.0 INTRODUCTION

Dear customer,

Thank you for purchasing the Airscout Terminal. The Airscout Terminal is a remote display for the Airscout product family, has a built-in data logger and provides input for 4 analog inputs.

Great products deserve great user manuals. We have done our best to make this user manual as complete as possible. New users, please read it carefully to familiarize yourself with our products.

3.0 PRODUCT OVERVIEW

The Airscout Terminal is intended as remote display. It provides local read out on locations where the Airscout is placed in high or unreachable locations. The display provides read out for flow, pressure, temperature, totalizer for one Airscout probe or in-line flow meter and up to 4 analog inputs.

To make the Airscout Terminal even more complete, a 2 Million point data logger and Modbus to Ethernet converter are integrated.

The Airscout Terminal can be used in combination with the:

- Airscout insertion probe flow meter
- Airscout in-line flow meter



4.0 QUICK START

This chapter contains the basic steps to start using your Airscout Terminal. Additional information on all subjects can be found in the next chapters.

1. Unpacking

- Unpack the box and check if all items are there and in good shape. A checklist with all items is

available on the box

2. Configuration

- Connect the Airscout flow meter to the Airscout Terminal
- Power up the Airscout Terminal and connect the USB cable to a computer
- Configure inner pipe diameter, log intervals, 4..20 mA inputs and other required parameters with Airscout studio

3. Mechanical installation

- See the user manual for the best point of installation for this product. Make sure that all specifications are met
- 4 holes are available to mount the Airscout Terminal on the wall Install the Airscout.
- Installation guidelines can be found in it's manual. Read this carefully

4. Electrical installation

- A cable for connecting to the Airscout insertion probe is pre-assembled to the connector cap.
- If using an Airscout In-Line, remove the connector cap.
- Apply 100-240 VAC to power up the device, the display will light up when power is applied

5. Data recording

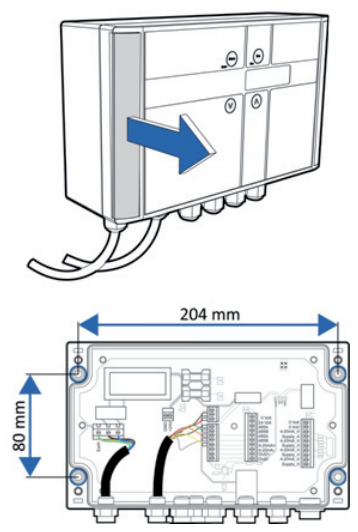
A data log session can be started by pressing the esc button and then enter. All parameters will be logged with the default logging intervals. These logging intervals can be changed with the Airscout studio software. This software tool is also used to retrieve the recorded sessions.

5.0 MECHANICAL INSTALLATION

First select the right installation point. Make sure that the Airscout is within range of the cable. It is not possible to extend the cable.

Follow the next six steps for installation.

1. Remove the silver strip at the left side by lifting it up with your fingernails and pull it towards you
2. Remove the two screws and open the cover
3. Hold the Airscout Terminal at the preferred position on the wall and mark the four installation holes with a pencil
4. Lay the Airscout Terminal aside and drill the marked points
5. Insert a jack in each hole
6. Hold the Airscout Terminal in front of the drilled holes and screw it through the connection holes to the wall



NOTICE

- Do not install the Airscout Terminal upside down.
- Do not install the Airscout Terminal in an environment where fluids can leak onto the device.
- Do not drill through the installation holes, use a pencil to mark the position holes and drill afterwards.

6.0 ELECTRICAL CONNECTIONS

NOTICE

Turn off power when the Airscout Terminal is opened.

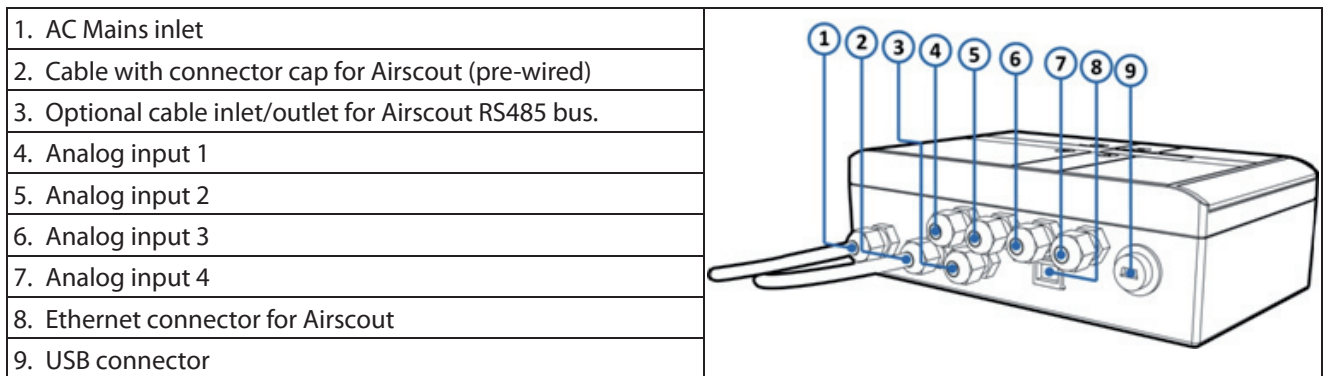
The Airscout Terminal has a pre-assembled cable for the Airscout. The Airscout in-line with M12 8-pin connector can be connected to this cable directly. A connector cap with M12 8-pin connector is used to connect the Airscout probe models. A Airscout with 5-pin connector can not be connected.

An Airscout needs to be connected to the Airscout Terminal in order to work. It is not possible to use the Airscout Terminal without the Airscout connected.

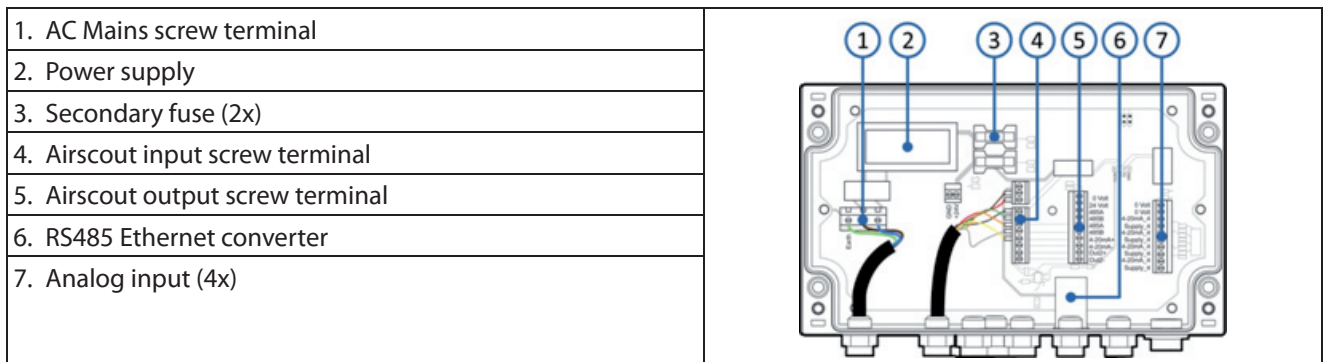
To access the inputs and outputs of the Airscout Terminal, the case needs to be opened. Make sure that it is tightened well to maintain the IP grade.

6.1 Connections

At the bottom of the Airscout Terminal there are several connections as seen in the image below.



6.2 Electrical overview



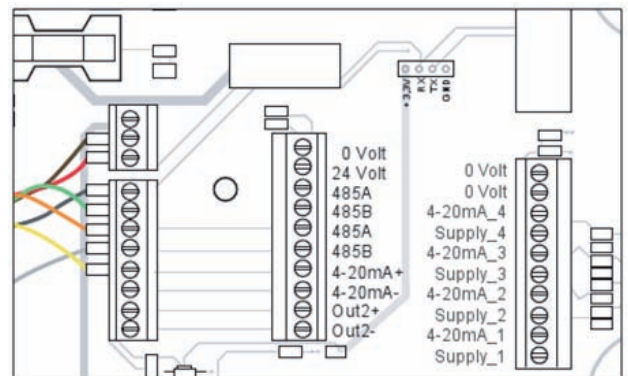
6.3 Airscout connections

Airscout connection

The cable to the Airscout is pre-wired. All signals are available on the middle screw terminal block. These signals can be used for connection to a building management system or Modbus chain.

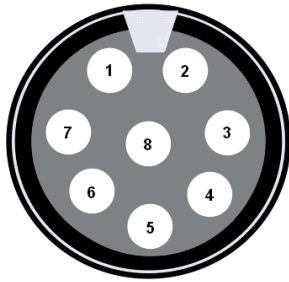
RS485:

These terminals are available in pairs, and can be used for RS485 networking. Use twisted pair shielded cable, with two pairs. One pair for A and B, and one lead of the other pair to interconnect the 0 Volt wire.



4..20 mA:

The 4..20 mA output of the Airscout is Active, which means that the Airscout powers the loop. For Airscout only the 4..20 mA + is used. 4..20 mA - is not connected.



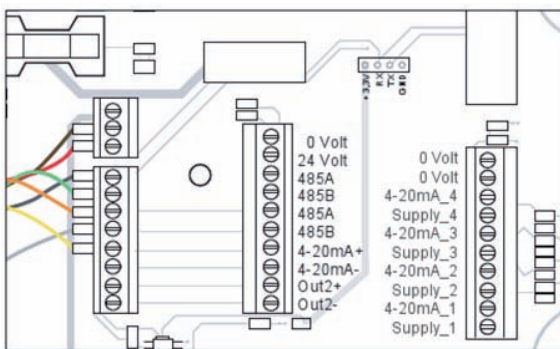
Pin	Signal
1	Rx
2	0 Volt
3	Tx
4	4..20 mA signal, active
5	RS485 A
6	RS485 B
7	Not connected
8	+12...24 VDC

6.4 Analog inputs

Analog inputs

The Airscout Terminal features 4 powered loop analog inputs. Each input has a 24V supply and a return input. The current signal is measured within this loop.

If the analog sensor requires a separate power supply which means that it is not powered from the loop, the 0 and 24V outputs can be used. (150mA max)



6.5 Ethernet converter

The Airscout Terminal contains a built in Ethernet port. This port is based upon a Lantronix xport module. In order to use this port, it needs to be configured and assigned with an IP address. The application to configure the port can be downloaded from www.lantronix.com. Search for deviceInstaller in the download area.

Xport configuration

- Download and install deviceInstaller from the Lantronix website

- Power up the Airscout Terminal and connect an Ethernet cable to your computer.
- Start deviceInstaller and click search. The Xport should be found.
- When the port is not listed, assign a fixed IP address to your computer
- Select the xport module and go to the tab “web configuration”. Then click the green button to open the configuration window. Log in with username “admin” and leave the password form empty.

Addressing an IP address

Select the option “network” in the menu. Here you can adjust the network settings of the xport.

Setting the baud rate

The xport converts the RS485 signal from the Airscout to Ethernet. Therefore, the xport needs to know what the communication parameters are. Click serial settings in the menu to change. Make sure that the settings match the Airscout settings.

Other options

All other options for the xport are pre-configured and may not be changed. Changing these parameters may cause the converter to stop working.

Modbus communication

Once the port is installed, the Airscout Terminal is ready to be used with Modbus. All Airscout parameters are available according the Airscout manual. Note that the signal is Modbus RTU over TCP.

Airscout studio communication

For communication with Airscout studio, a virtual COM port needs to be created as Airscout studio does not support IP communication.

A virtual COM port can be created with the CPR (COM Port Redirector) from Lantronix. This software can be download at www.lantronix.com

Install and run the software and follow next steps:

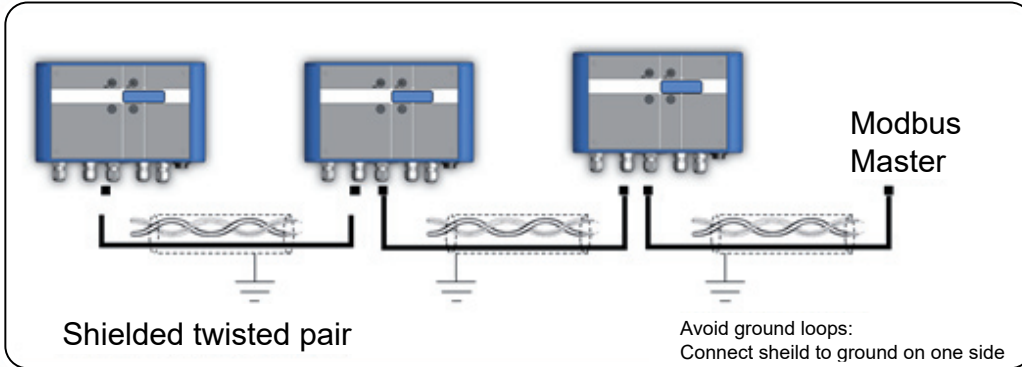
- Click the add/remove button above the list of all COM ports. Note: there may be inaccessible COM ports in the list. These are reserved by your system and should be left alone.
- Select an available COM port and click OK.
- Click the “search for device” button. The CPR software will search for Lantronix devices connected to the network. All found devices will appear in the device list below the COM ports.
- Double click on the COM port you want to assign the device to and a new window will appear. Leave these settings as is and right click on the device you want to connect to the port. Then choose the option “add to settings”. The IP address will appear with it’s TCP port.

- Clicking the save button will rise a new tab called [number] test. Go to this tab.
- Click on the open button and the port will be tested. When all went well, the connection is in place and can now be used.

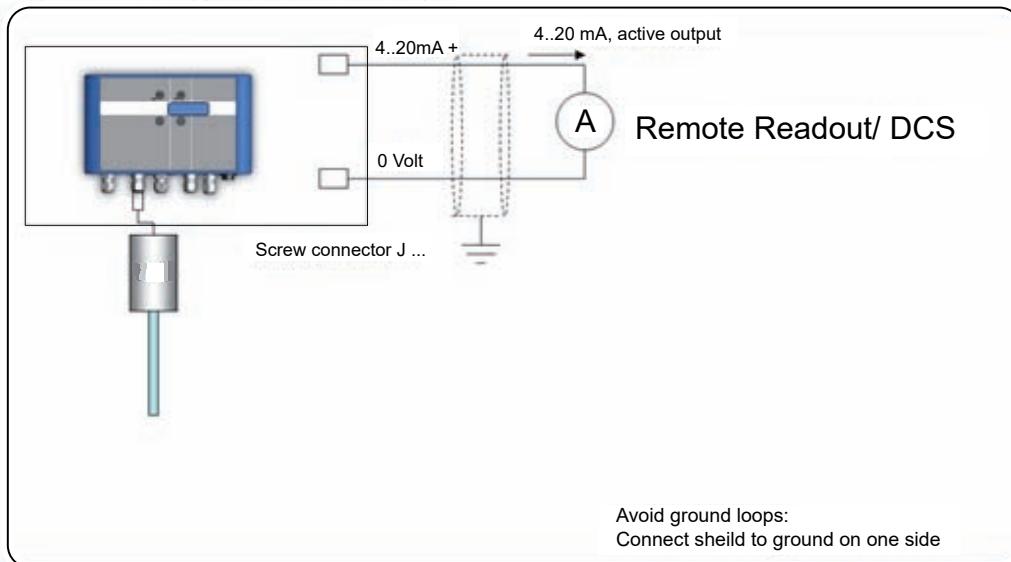
- NOTE: When the CPR software has issues, lower your firewall settings.

6.6 Schemes

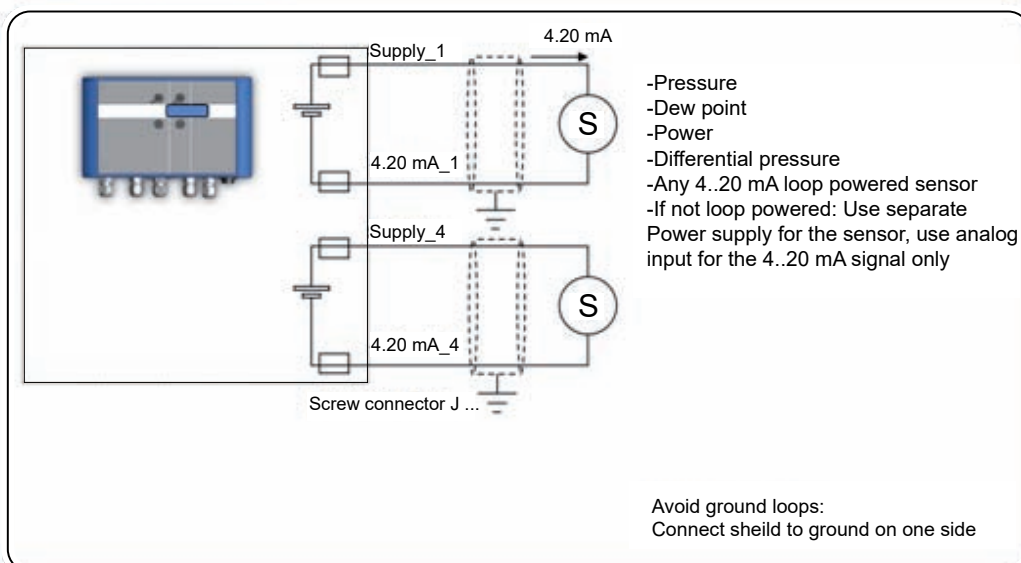
Modbus (RS485)



4..20 mA output Airscout



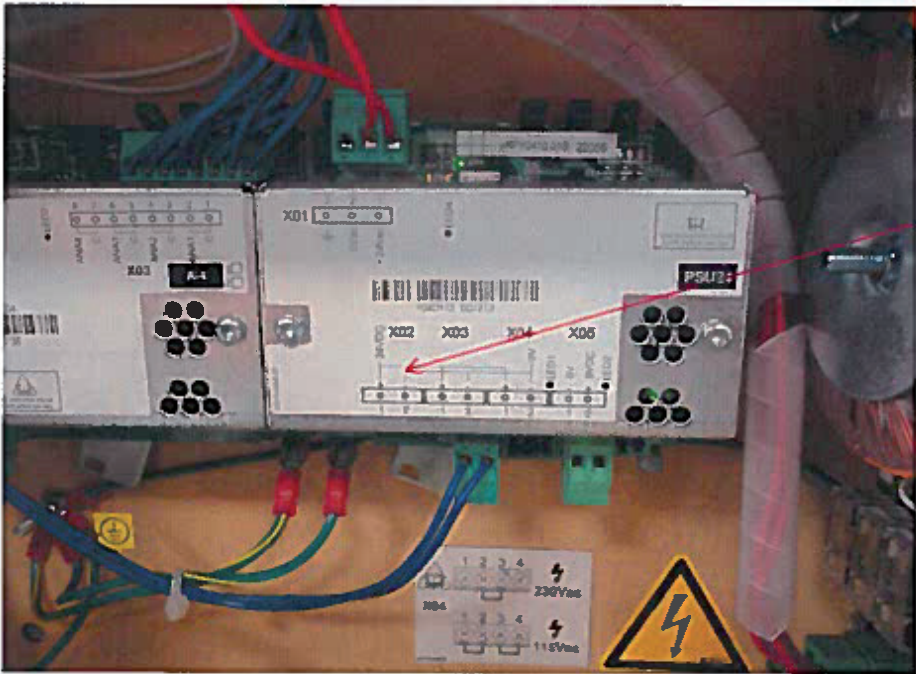
4..20 mA sensors



6.7 Connection to X-series controller

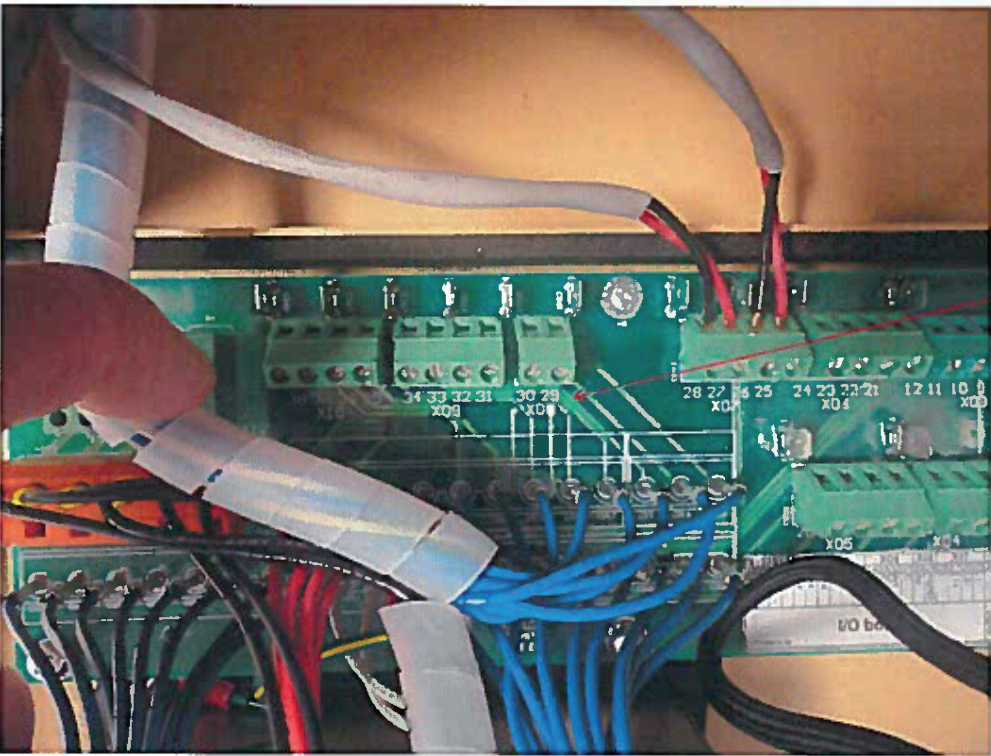
The correct wiring configuration consists of two steps:

- A. Provide power to the flow meter from an available terminal on the I/O Box PSU24 power supply. There are three 24VDC terminals available on the PSU24 - X02, X03 and X04. Connect the brown wire from flow meter to +24VDC from an available port on the PSU24. Connect the white wire on the Flow meter cable to 0VDC from the same port. See below Figure.



Connect the wires from Flow meter to one of these terminals, Brown to +24VDC and white to 0VDC

- B. Connect the blue wire from the Row meter cable to the desired analog input signal terminal on the I/O Box terminal PSB board. Located ports 32,34,36 or 38 shown in below.



Connect the blue wire from the flow meter to analog input signal terminal. Use parts 32, 34,36 or 38.


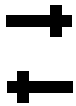




Once wiring is complete, the analog input can be properly scaled to provide proper operation. Use values from the IR Calculator as inputs. Refer to **Ingersoll Rand** I/O Box manual for instructions on how to input these values.

7.0 DISPLAY

The display is used for real time read out of the Airscout sensor inputs and the analog signals. This chapter explains all functionality.

7.1 Display status icons

Some status icons show feedback on the meters' status. Below is a list with explanation.

Icons	Description
	Sensor module is properly connected and supplied with power
	No communication with the sensor [Check external power when disconnected]
	A blinking dot will indicate that a data session is active
	2 rotating arrows indicate that there is communication with the computer
	The display is locked. The menu can not be accessed
	Memory indication. Each block indicates 20% of memory usage. The blocks start to blink if the memory is more then 95% full

7.2 LCD display

The LCD display provides 3 rows for real time data. Each row can be configured in the menu by selecting the desired parameter for this row.

7.3 Data Logger

The built-in data logger offers you 2 Million data points. Enough to measure all three channels 1 x per second for more than a week. A little warning though: more data does not always lead to better insight in savings! The analog inputs can also be stored in the data logger. The log interval for each input can be set with the Airscout studio software.

Use the following guidelines for the intervals

Application	Flow	Pressure	Temperature
Standard energy management application	5 min	5 min	5 min
Machine testing - quick fluctuations	1 sec	1 sec	1 sec
Audit -one week	10 sec	10 sec	5 min
Audit -one month	30 sec	30 sec	5 min

Multiple sessions can be recorded. When a session is started, a separate session will be recorded. It's not possible to append to an existing session.

When a power failure occurs during recording, the session will be stopped. When power is restored, a new session will start automatically.

7.4 Keypad

The key pad contains 4 buttons to control the Airscout Terminal.



1	Menu / Enter	Used to enter the (sub)menu or to confirm a setting
2	Escape / Record	Will start a data logging session when in the data acquisition screen. Will return from a (sub)menu when not in the data acquisition screen
3	Button down	Navigate down in the menu
4	Button up	Navigate up in the menu

Special key functions

- Lock display

In the main screen, press up and down simultaneously to lock or unlock the display. A lock icon will appear in the right lower corner of the screen. The lock function will block keypad functionality.

- Clean re-boot.

Hold esc pressed when turning the power on. Use this option when a display will not start up or if a session won't stop. This can happen due to subsequent power failures at the moment that the memory is almost full.

7.5 Menu

The menu is categorized into 3 main items which contain their own sub menu items. The complete menu structure is shown below:

1. Settings

1. Display
2. Date and Time
3. Modbus address
4. Display dimtime

2. DAQ Sessions

1. New Session
2. Delete all

3. Advanced

1. Reset

1 Settings

The settings menu can be used to change both functional parameters as display settings.

1.1 Display

The main screen of the display contains 3 rows to display measurement values. Via this menu

measurement values can be assigned to these rows. Available options in the menu are:

Measurand	Available units	Description
Empty	-	Leave this display row empty
Flow	m _n /sec m ³ _n /h l _n /min CFM m ³ /min sfps	Flow values are normalized: 0 °C and 1013.25 mbar
Pressure	Bar Psi	Gauge
Temperature	°C °F	
Totalizer	m ³ _n	Flow values are normalized: 0 °C and 1013.25 mbar
Analog inputs [1..4]		Analog inputs can be enabled and configured with Airscout studio
Custom		5 available units to be configured with Airscout studio. Multiply an existing unit with a user defined factor.

1.2 Date and Time

Adjust date and time settings. First enter the menu option and set the date with the key pad. The date is formatted as: DD-MM-YYYY. After setting the date, confirm with enter and then enter the time settings in format: HH:MM:SS, again confirm with enter. The new date will become active immediately.

Date/time settings are kept actual by the real time clock until long power down. Date and time will also be synchronized with the computer when used with Airscout studio.

1.3 Modbus address

The Modbus address can be changed with this menu option. Use the up and down buttons to change the number. Available numbers 1 – 247.

After setting the number press enter to save the address. The power of the attached Airscout needs to be cycled to activate the new address.

1.4 Display dimtime

The display backlight dimtime can be adjusted here. The default dimtime is set to 10 seconds. Other Available options are:

- Fading off. The backlight will remain on
- 5 till 30 seconds with steps of 5 seconds

Confirming with menu will make this setting immediately active.

2 DAQ Sessions

The Airscout Terminal contains a 2 Million point datalogger. Via this menu you can start and stop the sessions or delete all present data.

2.1 Start session

The session will be started when you push the enter button after selecting this option. When the session is started, the menu will close and the main screen will be shown. A blinking dot in the right upper corner will indicate the running session. The menu will be blocked when a session is active. The session can be stopped by pressing the esc button.

2.2 Delete all

All sessions will be deleted. It is not possible to delete just a single session.

3 Advanced

3.1 Reset

Reset the device. All peripherals will be reinitialized. This option is also needed when updating the display firmware. Note: The Ethernet port and Airscout sensor are not reset during this sequence.

8.0 AIRSCOUT STUDIO SOFTWARE

The Airscout Terminal and its attached sensor can be read out and configured with the Airscout studio software. This software can be downloaded from internal Ingersoll Rand hosted websites.

In case of basic configuration and read out, use the free edition. If real time logging is required, request a license code by our sales department.

Connect the Airscout Terminal to the computer

The Airscout Terminal can be connected to the computer with the USB connector. You can only download data log sessions and configure the display. For configuration or read out of the sensor the mains cable needs to be connected power up the attached sensor.

Install USB drivers

A driver needs to be installed for the USB interface. The driver might be installed automatically by your windows system or need to be installed manually. All drivers are available on internal Ingersoll Rand hosted websites.

Configure the Airscout Terminal

- Start the Airscout studio software
- In the left white window, right click to open the menu. Now click add device

- Click the scan button to search for the right COM port. Select it and click add
- Enter a name for the device
- Select USB
- Click add

Airscout Terminal display read out

- Click on the terminal icon to read out the display settings
- The status tab provides general information
- The installation tab is used to configure the settings
- Click sessions below display to retrieve session data

Airscout sensor read out

- Click on the plus symbol to unfold the sensor option
- Click on the sensor icon to read out the sensor settings
- The status tab provides general information
- The installation tab is used to configure the settings

9.0 SERVICE

The Airscout attached to your Airscout Terminal needs regular maintenance to ensure that the product is functioning properly. Especially when the product is used for mobile air audits, we recommend inspecting the instrument before and after every audit to ensure that the product has not been damaged. For precision measurement equipment such as the Airscout, a proper maintenance program is key to reliable measurement results and a long product lifetime.

9.1 Recalibration

To keep your Airscout in best shape, it needs recalibration. The recommended recalibration date can be found in Airscout studio, when you read out your Airscout. Keep close eye on this date. We advice annual recalibration.

10.0 SPECIFICATIONS

WARNING



Please always check the label of your product for the specifications. Specifications are subject to change as we are continuously improving our products. Please contact us to obtain the latest specification sheet.

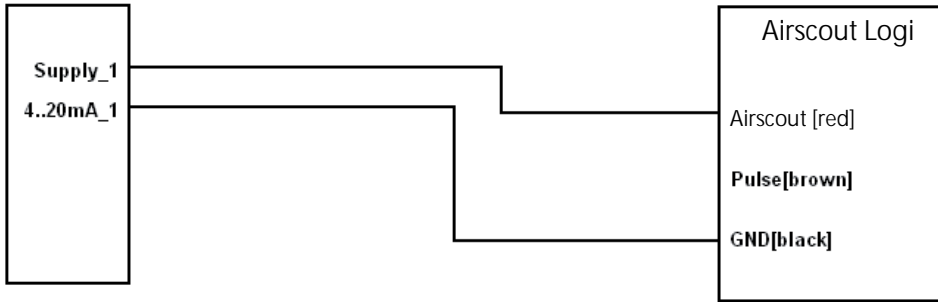
Mechanical		
Airscout	230 mm x 130 mm x 75 mm	1.6 Kg
Housing	Painted Aluminum IP65	
Ambient temperature	0..50 °C	32 .. 122 °F
Electrical		
Power supply	100 -240 VAC	
Primary fuse	1 Ampere	
Secondary fuses	250 mili Ampere	
Display		
Technology	Liquid crystal	
Back light	Blue with auto power save	
Memory	2 Million point memory	
Inputs and outputs		
Analog output	Airscout current / pulse output	
Analog inputs	4 x 4..20 mA input	
Serial IO	Modbus RTU	
	USB for configuration	
Ethernet	Lantronix Xport converter for RS485	

11.0 ORDER INFORMATION AND ACCESSORIES

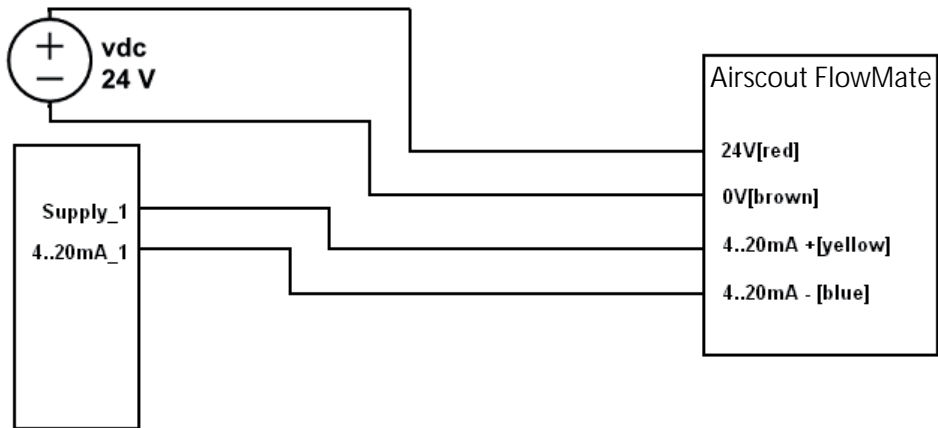
CCN	Description
23818065	Airscout Terminal with cable and power supply
49099260	Connector cap with M12 8-pin socket
Replacement Parts	
49099302	Replacement cable 10m / 32.9 ft with M12 8-pin connector on one side, open wires on other side
49099310	Replacement power supply, 1.9m / 6.3 ft, VS power plug on one side, open wires on other side
Software	
49099328	Registration key for configuration software with real time read out

12.0 CONNECTION EXAMPLES

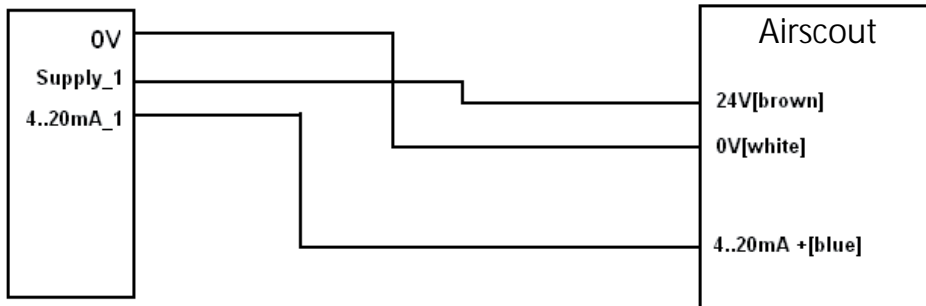
Airscout Terminal with Airscout Logi



Airscout Terminal with Airscout FlowMate



Airscout Terminal with additional Airscout



13.0 ZERO AND SPAN CALCULATION

Configuration of the Airscout Terminal for analog inputs

You need to configure the Airscout Terminal via your personal computer, using Airscout studio software.

- There are three things to configure:
- The name and prefix of the sensor
- The logging interval for the sensor
- The 4..20 mA scaling for the sensor

Current to power calculation

In this example we will explain how to calculate the power corresponding to the 4..20 mA output value. Before we can do this we need some more data.

1. Measure the supply Voltage (! remember, this is a task for certified electricians)
2. Check the power factor of your motor. The power factor will be a number between 0.7 and 0.9, and is assumed to be constant.

The formula to calculate the power is as follows, for a three phase motor:

$$P(kW) = \frac{I \text{ (Ampere)} * U \text{ (Volt)} * \cosinus(\varphi)}{\sqrt{3}} * 3 * \frac{1}{1000}$$

This formula can be simplified:

$$P(kW) = I \text{ (Ampere)} * U \text{ (Volt)} * \cosinus(\varphi) * \sqrt{3} * \frac{1}{1000}$$

Lets assume a cosinus(ö) of 0.7

For a 200 Amp current clamp, the Pmax (maximum power) is:

$$P_{max} = 200 * 400 * 0.7 * \sqrt{3} * \frac{1}{1000} = 97 \text{ kW}$$

This number will correspond to 20 mA and this is the number to fill as span value. 0 kW will correspond to 4mA as this is the current level when there is no power being consumed.

This number can be filled in as zero value

So now you have configured all input you need. You can start logging now.

Setting the logging interval

The logging interval depends on what you would like to see. If you are interested in control system behavior, you can set the logging interval to 1 second, and measure for a couple of days. If you would like to see slow variations, for example the influence of daily production on the performance, you can set the interval to once per minute. For see seasonal influence, a 15 minute interval provides enough data to make the right analysis.



TIP: For flow, pressure and kW, we recommend to have identical intervals.



A series of horizontal lines for writing, consisting of 25 evenly spaced lines that span the width of the page. The lines are thin and black, providing a guide for text entry.



A series of horizontal lines for writing, consisting of 25 evenly spaced lines that span the width of the page.

