



# FS CURTIS®

## AIR COMPRESSORS

### **SE20, SE25, SE30 ROTARY SCREW COMPRESSORS**

**PARTS LIST**

#### AIR COOLED

#### HOW TO ORDER PARTS

Give name and part number as shown in parts list and serial number. Serial number is on nameplate attached to control panel of unit.

#### LOT NUMBER:

SE20A	LOT#13
SE25A	LOT#14
SE30A	LOT#13

#### IMPORTANT

Make a permanent record of the Model and Serial numbers of your machine here. You'll save time and expense by including this reference identification on replacement parts

MODEL : \_\_\_\_\_

SER. NO.: \_\_\_\_\_

## **CURTIS-TOLEDO, INC.**

1905 KIENLEN AVENUE, ST. LOUIS, MISSOURI 63133

Tel. (314) 383-1300

Fax (314) 381-1439

E-MAIL: [info@curtistoledo.com](mailto:info@curtistoledo.com)

## INTRODUCTION

### HOW TO USE THE PARTS LIST

Using the List of Illustrations obtain the figure number of the assembly in which your part is located. Go to the appropriate figure and locate your part on the illustration. Using the key number, find the part on the parts list.

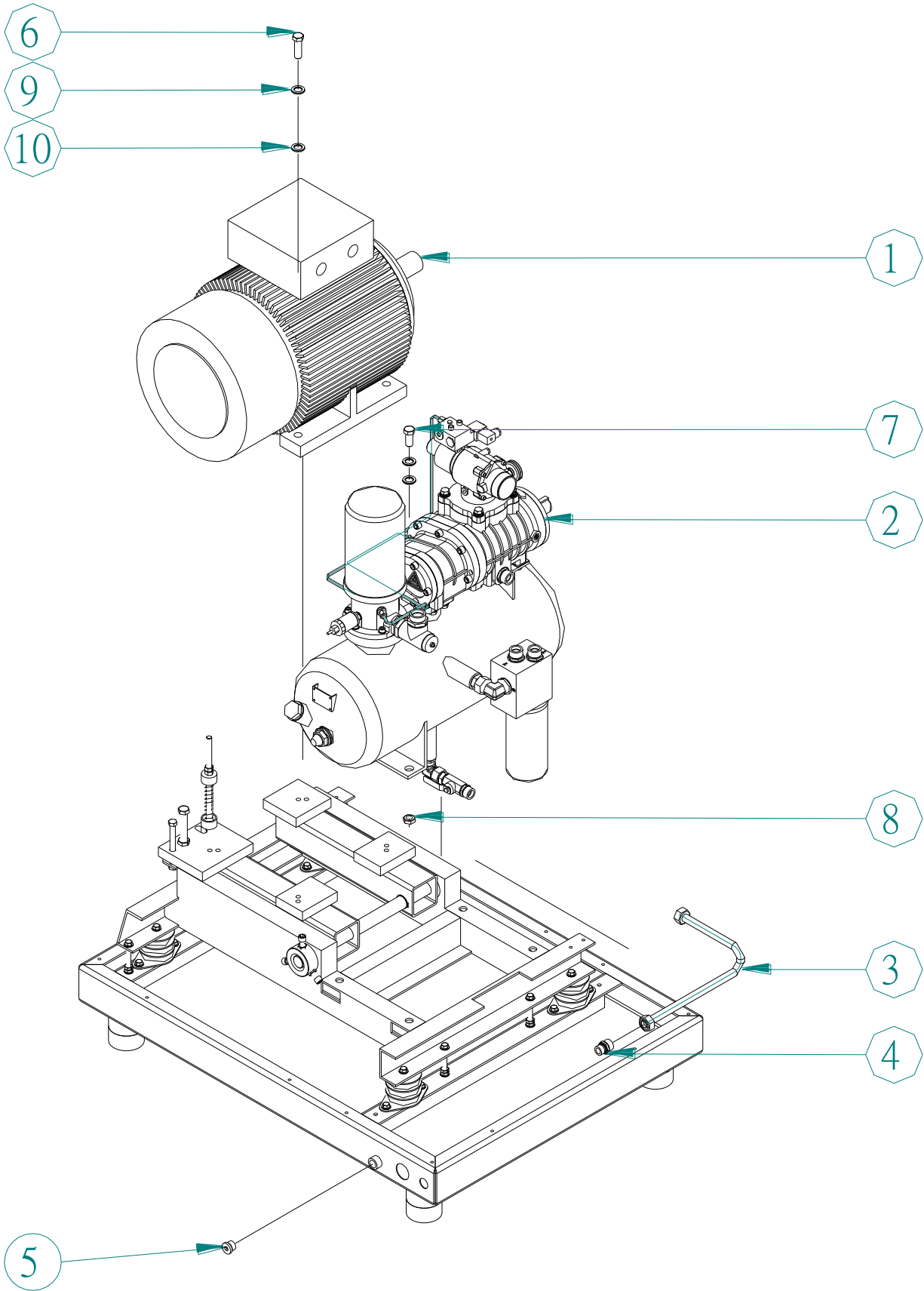
### Table of Contents

	<u>Page</u>
Air End/ Motor/ Base Assembly	2,3
Pressure Range Assembly	4
Pressure Range Kits	5,6
Fan and Cooler Assembly	7
Air and Oil Piping Assembly	8,9
Air Filter Assembly	10
Electric Control Assembly	11,12
Enclosure Assembly	13,14
Air End Receiver Assembly	15-17
Base Frame Assembly	18
Motor and Air Sub Base Assembly	19
Thermostatic Valve Assembly	20
Control Panel Layout	21-26
Simple Controller	27



## **WARNING**

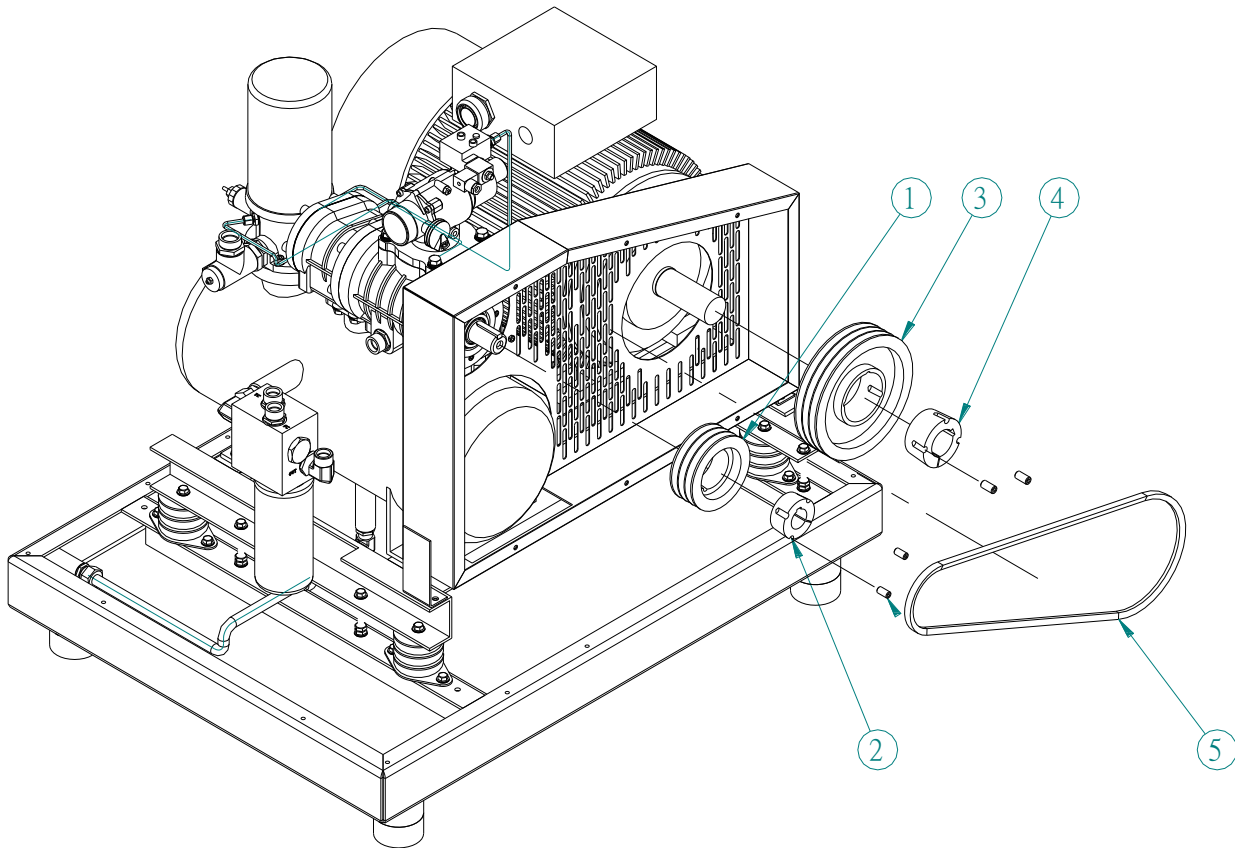
Personal injury and/or equipment damage will result by failing to pay attention to the vital safety information and instruction in the operating and instruction manual. Carefully read, understand, and retain all safety information and instructions before operating this unit.



**Air end / Motor / Base Assembly**

**BILL OF MATERIALS**

ITEM	QTY.	PART NO.	NAME	SIZE	SPECIFICATION	REFERENCE
1	1	1482044	MOTOR		30HP	200V
	1	RN19033	MOTOR		30HP	230/460V
	1	1482045	MOTOR		30HP	575V
	1	1482084	MOTOR		25HP	200V
	1	1310067	MOTOR		25HP	230/460V
	1	1482085	MOTOR		25HP	575V
	1	1482073	MOTOR		20HP	200V
	1	1482075	MOTOR		20HP	230/460V
	1	1482074	MOTOR		20HP	575V
2	1	1485040	AIREND RECEIVER ASSEMBLY			
3	1	1489025	STEEL PIPE		3/8"	
4	1	1489014	NIPPLE		G1/2"-90 -10mm	
5	1	1489055	PLUG		G1/2"	Belong to 1485074
6	4	1489520	BOLT		M16×50	
7	4	1489521	BOLT		M16×40	
8	4	1489522	NUT		M16	
9	8	1489523	LOCKWASHER		M16	
10	8	1489524	PLAIN WASHER		M16	



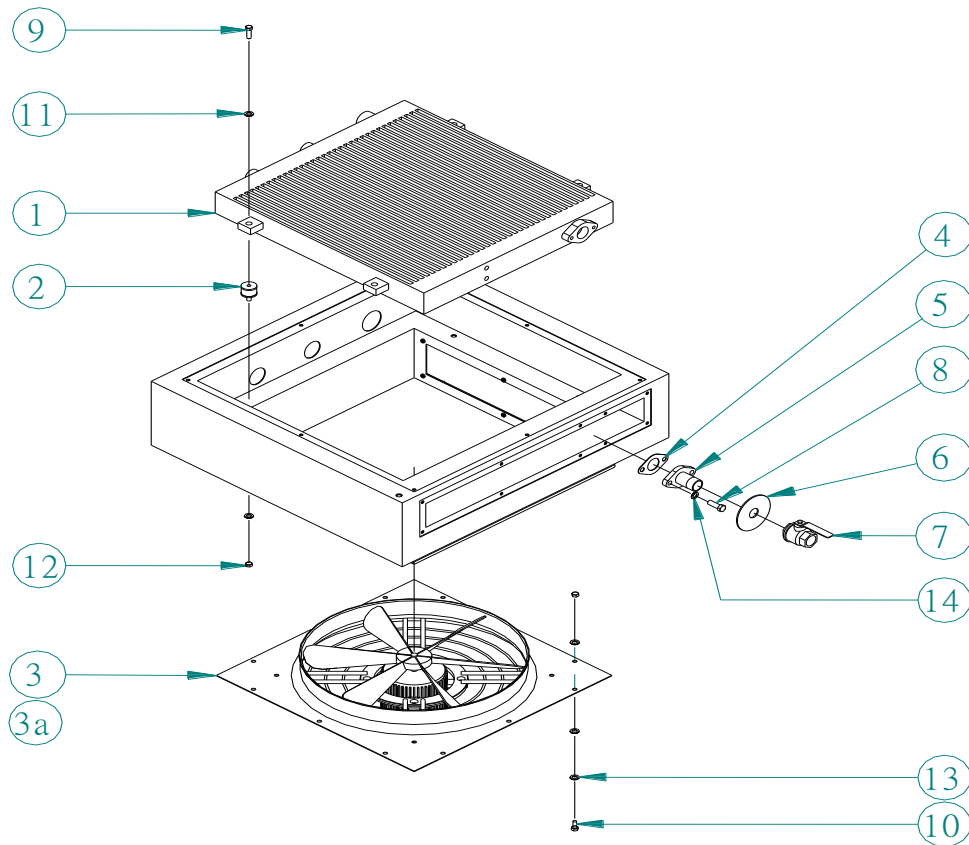
### Pressure Range Assembly

#### BILL OF MATERIALS

ITEM	QTY	PART NO.	NAME	SPECIFICATION	REFERENCE
1	1	1450052	AIR END SHEAVE	SPA125X3	SE30 125psi
2	1	1450055	AIR END BUSHING	2012/35	
3	1	1450046	MOTOR SHEAVE	SPA190X3	
4	1	1487020	MOTOR BUSHING	2517/1.625	
5	3	1487108	BELT	XPA1400	

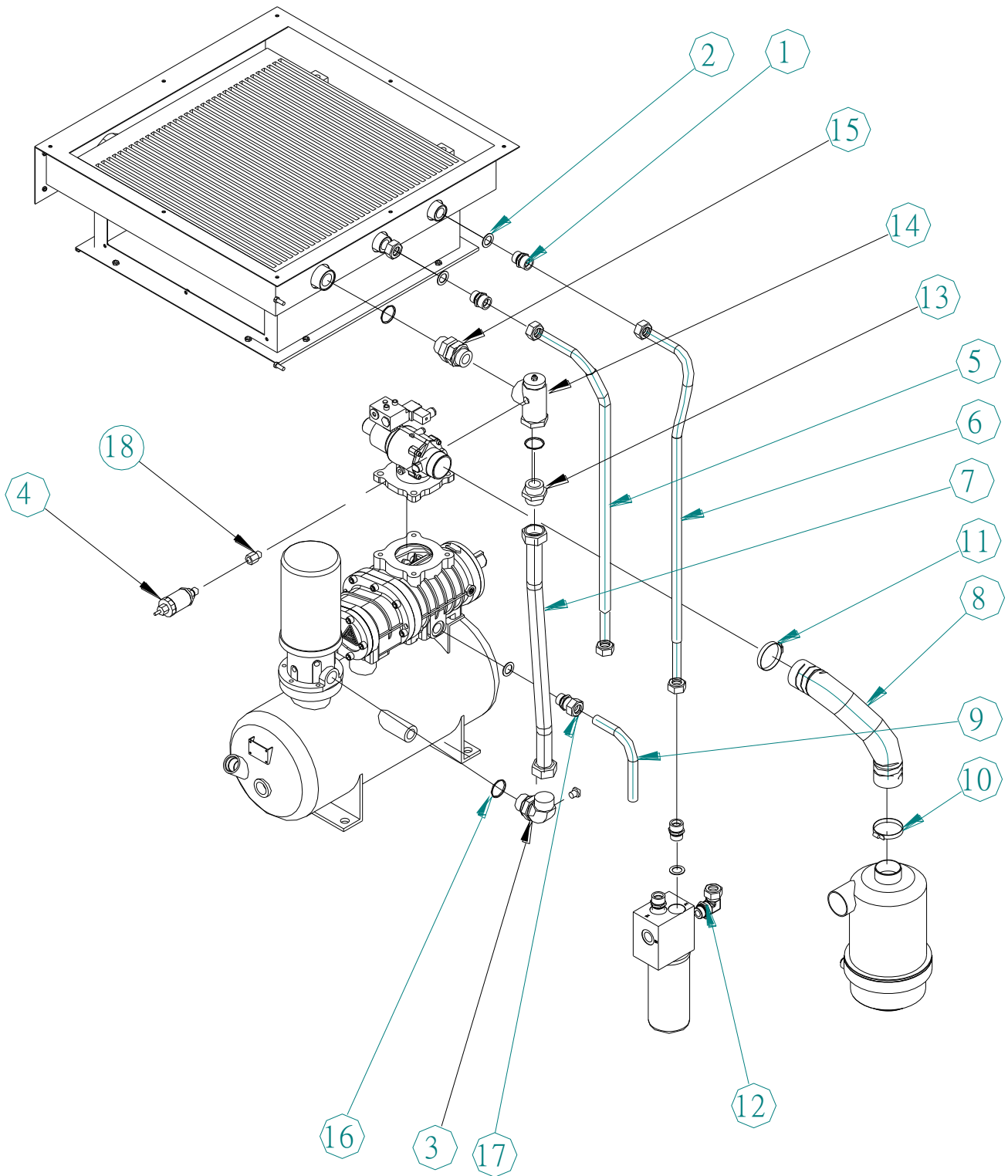
SE20~30 PRESSURE RANGE KITS					
TYPE	PRESSURE	PART NO.	NAME	SPEC.	QTY
SE20	100 PSI	1487016	AIR END SHEAVE	SPA100X3	1
		1350012	AIR END BUSHING	1610/35	1
		1487018	MOTOR SHEAVE	SPA236X3	1
		1487020	MOTOR BUSHING	2517/1.625	1
		1487109	BELT	XPA1450	3
	125 PSI	1487017	AIR END SHEAVE	SPA112X3	1
		1450055	AIR END BUSHING	2012/35	1
		1487018	MOTOR SHEAVE	SPA236X3	1
		1487020	MOTOR BUSHING	2517/1.625	1
		1487109	BELT	XPA1450	3
	150 PSI	1450052	AIR END SHEAVE	SPA125X3	1
		1450055	AIR END BUSHING	2012/35	1
		1487018	MOTOR SHEAVE	SPA236X3	1
		1487020	MOTOR BUSHING	2517/1.625	1
		1487111	BELT	XPA1500	3
	175 PSI	1450979	AIR END SHEAVE	SPA140X3	1
		1450056	AIR END BUSHING	2417/35	1
		1487018	MOTOR SHEAVE	SPA236X3	1
		1487020	MOTOR BUSHING	2517/1.625	1
		1487111	BELT	XPA1500	3
SE25	100 PSI	1487036	A/E SHEAVE 4 GROOVES	SPA100X4	1
		1350012	AIR END BUSHING	1610/35	1
		1487037	MOTOR SHEAVE 4 GROOVES	SPA280X4	1
		1487035	MOTOR BUSHING	2517/1.625	1
		1487111	BELT	XPA1500	4
	125 PSI	1487036	A/E SHEAVE 4 GROOVES	SPA100X4	1
		1350012	AIR END BUSHING	1610/35	1
		1487043	MOTOR SHEAVE 4 GROOVES	SPA265X4	1
		1487035	MOTOR BUSHING	2517/1.625	1
		1487111	BELT	XPA1500	4
	150 PSI	1487036	A/E SHEAVE 4 GROOVES	SPA100X4	1
		1350012	AIR END BUSHING	1610/35	1
		1487028	MOTOR SHEAVE 4 GROOVES	SPA236X4	1
		1487035	MOTOR BUSHING	2517/1.625	1
		1487109	BELT	XPA1450	4
	175 PSI	1487036	A/E SHEAVE 4 GROOVES	SPA100X4	1
		1350012	AIR END BUSHING	1610/35	1
		1487042	MOTOR SHEAVE 4 GROOVES	SPA224X4	1
		1487036	MOTOR BUSHING	2517/1.625	1
		1487142	BELT	XPA1420	4

<b>SE20~30 PRESSURE RANGE KITS (Con't)</b>					
<b>TYPE</b>	<b>PRESSURE</b>	<b>NO.</b>	<b>NAME</b>	<b>SPEC.</b>	<b>QTY.</b>
SE30	100 PSI	1450979	AIR END SHEAVE	SPA140X3	1
		1450056	AIR END BUSHING	2517/35	1
		1487018	MOTOR SHEAVE	SPA236X3	1
		1487020	MOTOR BUSHING	2517/1.625	1
		1487111	BELT	XPA1500	3
	125 PSI	1450052	AIR END SHEAVE	SPA125X3	1
		1450055	AIR END BUSHING	2012/35	1
		1450046	MOTOR SHEAVE	SPA190X3	1
		1487020	MOTOR BUSHING	2517/1.625	1
		1487108	BELT	XPA1400	3
	150 PSI	1450784	AIR END SHEAVE	SPA150X3	1
		1450056	AIR END BUSHING	2517/35	1
		1450359	MOTOR SHEAVE	SPA200X3	1
		1487020	MOTOR BUSHING	2517/1.625	1
		1487109	BELT	XPA1450	3
	175 PSI	1450784	AIR END SHEAVE	SPA150X3	1
		1450056	AIR END BUSHING	2517/35	1
		1450046	MOTOR SHEAVE	SPA190X3	1
		1487020	MOTOR BUSHING	2517/1.625	1
		1487109	BELT	XPA1450	3



**Fan and Cooler Assembly**  
**BILL OF MATERIALS**

ITEM	QTY.	PART NO.	NAME	SIZE	SPECIFICATION	REFERENCE
1	1	1484007	COOLER			
2	4	1484036	COOLER PAD		Φ 30, H27, M8	
3	1	1484029	FAN ASSEMBLY		FZL500-H5P30S4	200V
	1	1484030	FAN ASSEMBLY		FZL500-H5P30S4	230/460V
	1	1484031	FAN ASSEMBLY		FZL500-H5P30S4	575V
3a	1	1484029-1	FAN MOTOR			200V
	1	1484030-1	FAN MOTOR			230/460V
	1	1484031-1	FAN MOTOR			575V
4	1	1485010	GASKET			
5	1	1485041	DISCHARGE PIPE			
6	1	1489023	RUBBER COVER			
7	1	1485024	BALL VALVE		G 1"	
8	2	1489519	BOLT		M10×30	
9	4	1489525	BOLT		M8×50	
10	8	1489526	BOLT		M8×20	
11	24	1489508	PLAIN WASHER		M8	
12	12	1489527	NUT		M8	
13	8	1489511	LOCK WASHER		M8	
14	2	1489512	LOCKWASHER		M10	



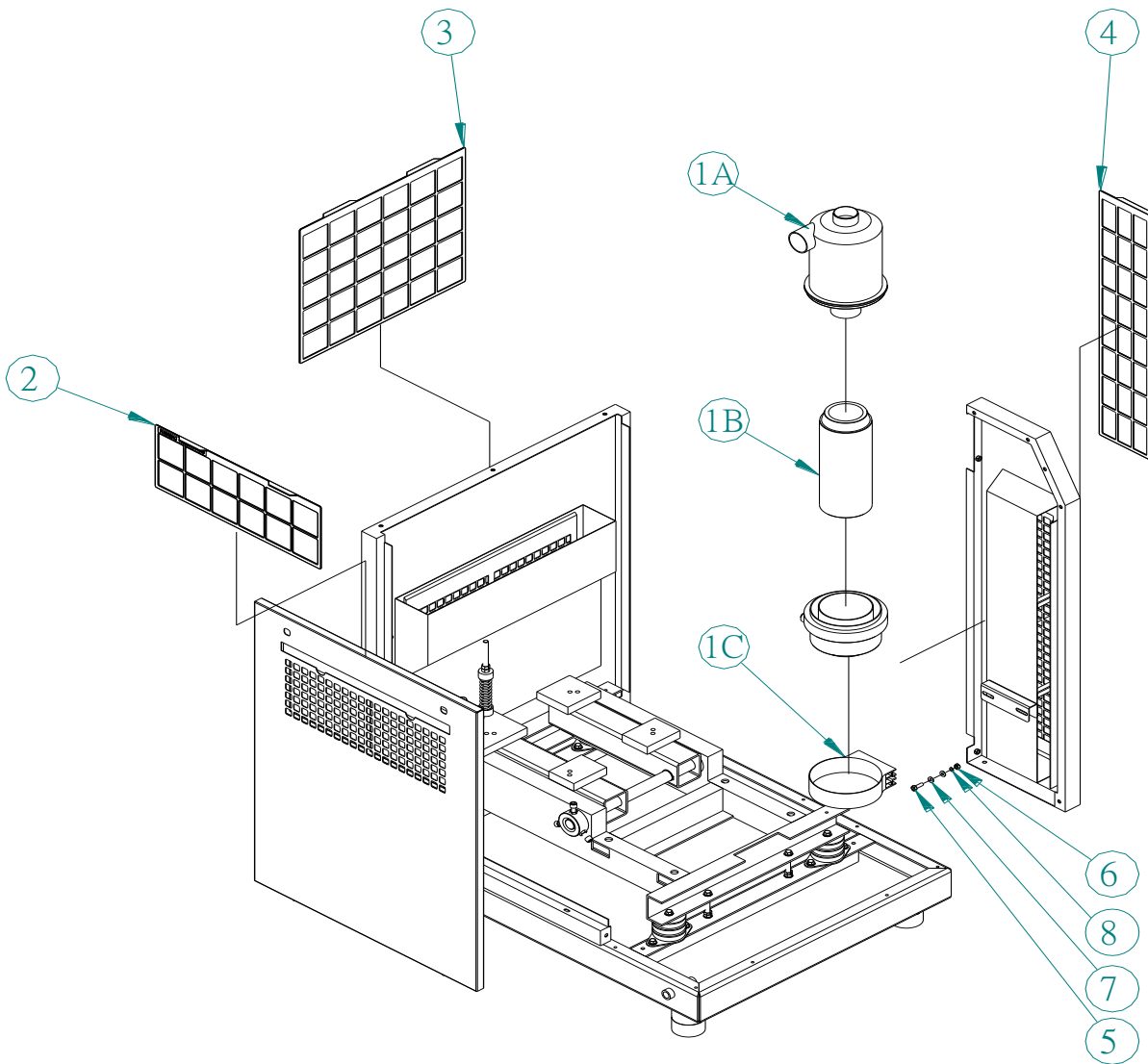
**Oil and Air Piping Assembly**

---

**BILL OF MATERIALS**

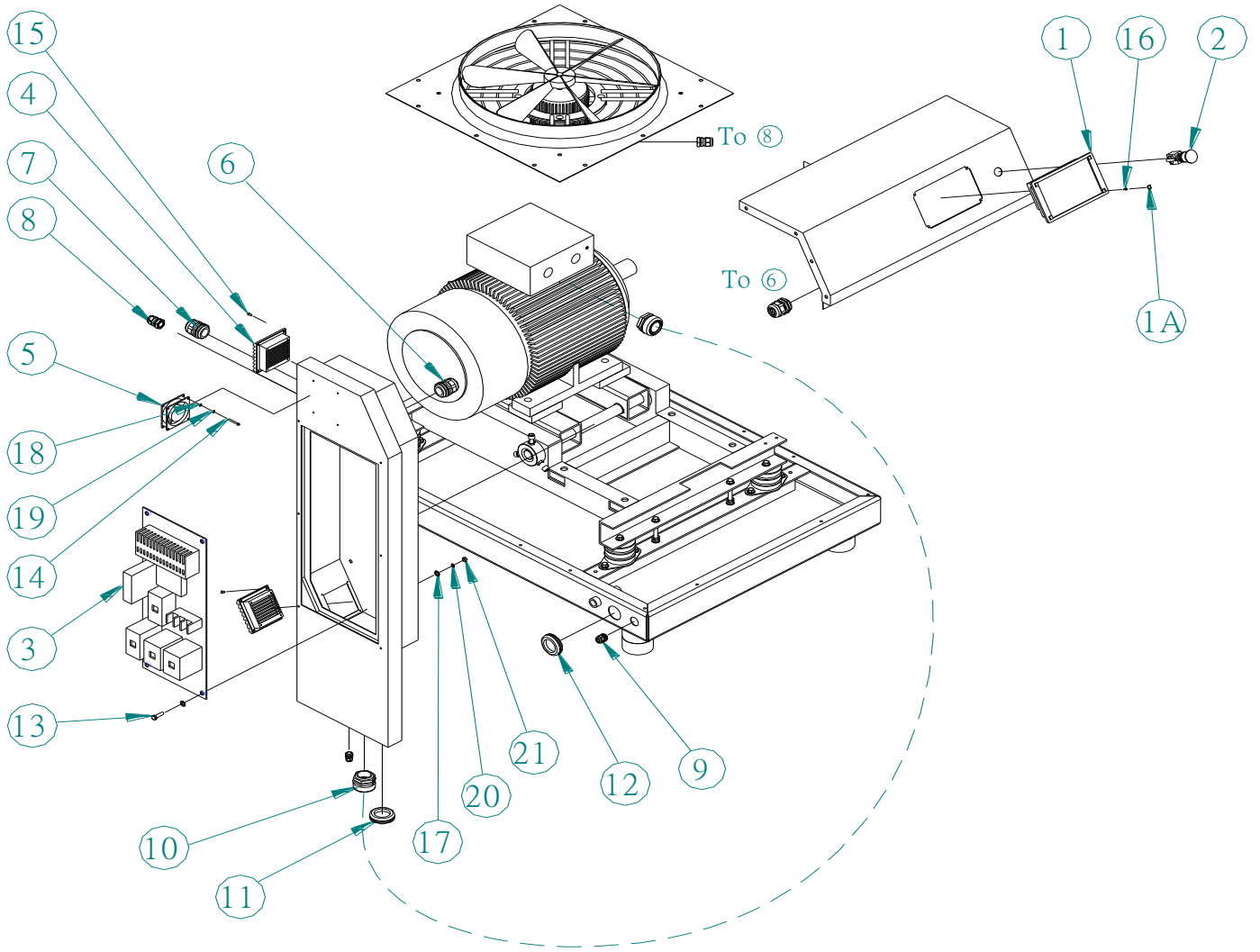
No.	QTY	Part No.	Part Name	SIZE	Spec.	REFERENCE
1	4	1485042	JOINT		0° -BSPP3/4"×M30*2	Belong to 1485075
2	5	1485043	BONDED SEALS		3/4", Steel+Viton	Belong to 1485006
3	1	1485044	JOINT		90° -BSPP1"×M36*2	Belong to 1485075
4	1	1485045	PRESSURE TRANSMITTER		4~20mA, 0~16bar, 3M	Δ
5	1	1485046	STEEL HOSE		Steel, 3/4"	Belong to 1485075
6	1	1485078	STEEL HOSE		Steel, 3/4"	Belong to 1485075
7	1	1485048	HOSE		1"	Belong to 1485075
8	1	1485049	SUCTION HOSE		PVC	
9	1	1485050	PIPE		φ20*1~2t, Stainless Steel	
10	1	1485051	PIPE CLAMP		3"	
11	1	1485052	PIPE CLAMP		3 1/2"	
12	1	1485053	ELBOW		BSPP3/4"-90° -Φ20,	Belong to 1485074
13	1	1485054	JOINT		0° -BSPP1"×M36*2	Belong to 1485075
14	1	1485159	MPV		VMCG26	
15	1	1485056	NIPPLE		0° -BSPP1"× BSPP1",	Belong to 1485074
16	2	1485057	BONDED SEALS		1", Steel+Viton	Belong to 1485006
17	1	1485058	JOINT		M26*1.5-0° -Φ20	Belong to 1485074
18	1	1489019	ADAPTOR		1/4" BSPP TO 1/4" NPT	Δ

Δ – Both parts will be replaced with (1) 1/4" Tee VA745, 1/4" Tube VA1626 will be added for simple controls.



### Air Filter Assembly BILL OF MATERIALS

ITEM	QTY.	PART NO.	NAME	SIZE	SPEC.	REFERENCE
1	1	1485059	SUCTION FILTER ASSY			
1A	1	1485059-1	SUCTION FILTER SHELL			Belongs TO 1485059
1B	1	1485059-2	SUCTION FILTER ELEMENT			Belongs TO 1485059
1C	1	1485059-3	SUCTION FILTER SUPPORT			Belongs TO 1485059
2	1	1483053	PRE-FILTER			Belongs TO 1483001
3	1	1483054	PRE-FILTER			Belongs TO 1483001
4	1	1483055	PRE-FILTER			Belongs TO 1483001
5	2	1489528	BOLT		M8×30	
6	2	1489527	NUT		M8	
7	4	1489508	PLAIN WASHER		M8	
8	2	1489511	LOCK WASHER		M8	



### Electrical Control Assembly

**BILL OF MATERIALS**

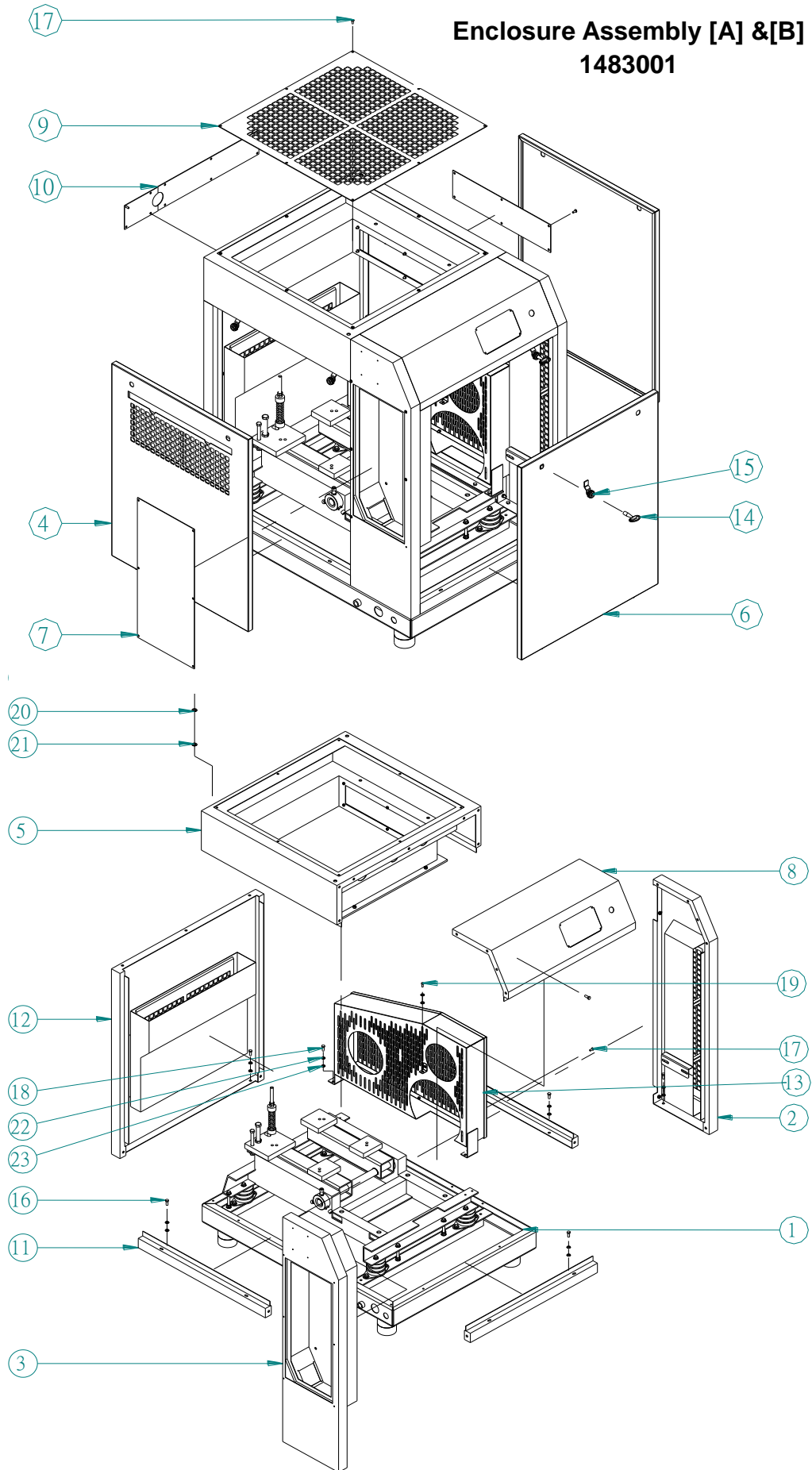
No.	QTY	Part No.	Name	SIZE	Spec.	REFERENCE
1	1	1481001	CONTROLLER		SE /Eng./ Symbols	Δ
1A	4	1481001-1	HOLE PLUG			
2	1	1240006	E-STOP		D25	ξ
3	1	1481110	STARTER PANEL		Y-Δ	SE20,25 200-230V,SE30 230V
	1	1481115	STARTER PANEL		Y-Δ	SE20-30 460-575V
	1	1481017	STARTER PANEL		FVNR	SE30 200V
	1	1481047	STARTER PANEL		Y-Δ	β - SE20,25 200-230V,SE30 230V
	1	1481049	STARTER PANEL		Y-Δ	β - SE20-30 460-575V
4	1	1489001	VENTILATOR FILTER		86*86	
5	1	1484019	FAN			
6	1	1489056	JOINT		FGA33-H5-08B	
7	1	1489057	JOINT		MG32AS-16B	
8	2	1489058	JOINT		FGB21M-12B	
9	1	1489003	JOINT		MG20AS-10B	
10	2	1489060	JOINT		MGS40, 42B, 1-1/4"	Belongs TO 1482000
11	1	1489061	PACKING		D44	
12	1	1489062	PACKING		D65	
13	4	1489528	BOLT		M8*30	
14	4	1489529	SCREW		M4*40	
15	4	1489530	SCREW		M4*10	
16	4	1489517	SCREW		M3*10	
17	4	1489508	PLAIN WASHER		M8	
18	4	1489531	PLAIN WASHER		M4	
19	4	1489532	LOCKWASHER		M4	
20	4	1489511	LOCKWASHER		M8	
21	4	1489527	NUT		M8	

Δ – Will be replaced with Simple Controller- See Pg 28

ξ - Part will be replaced by Pressure Gauge VA302 for simple controls

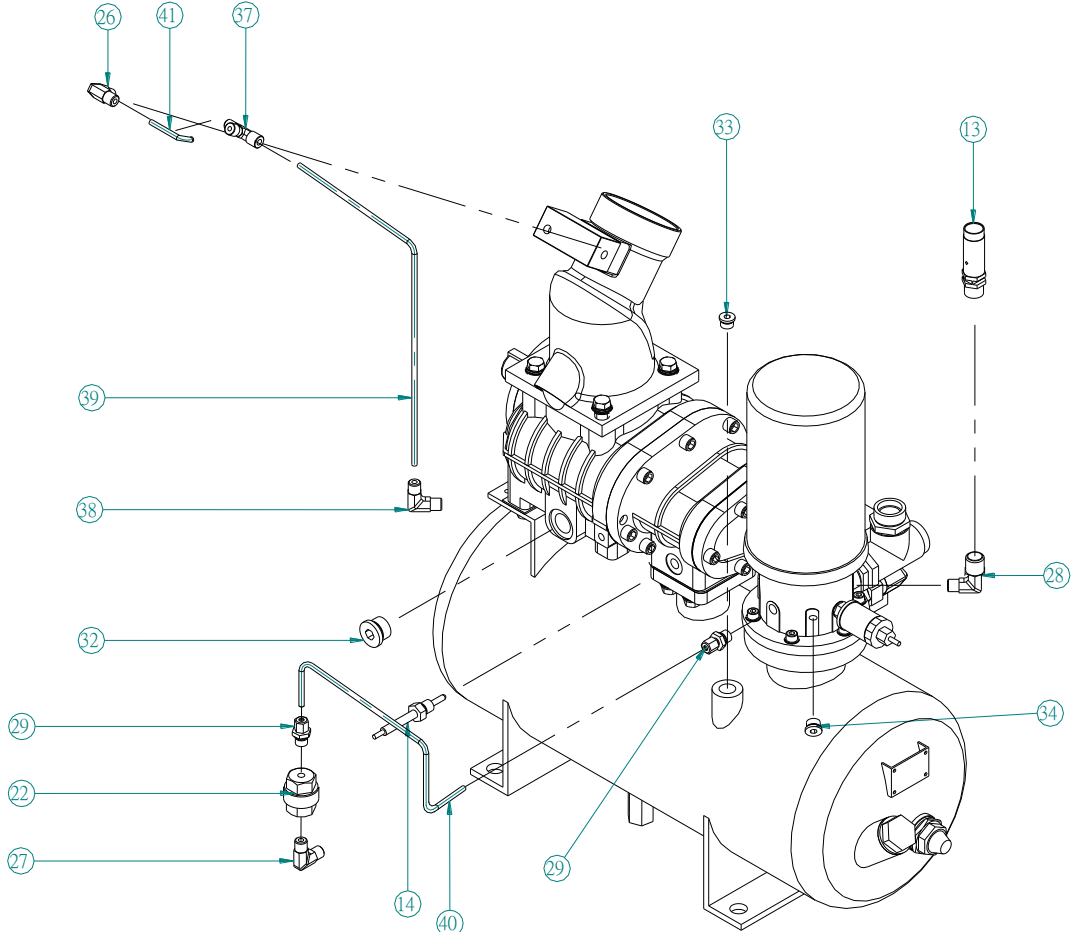
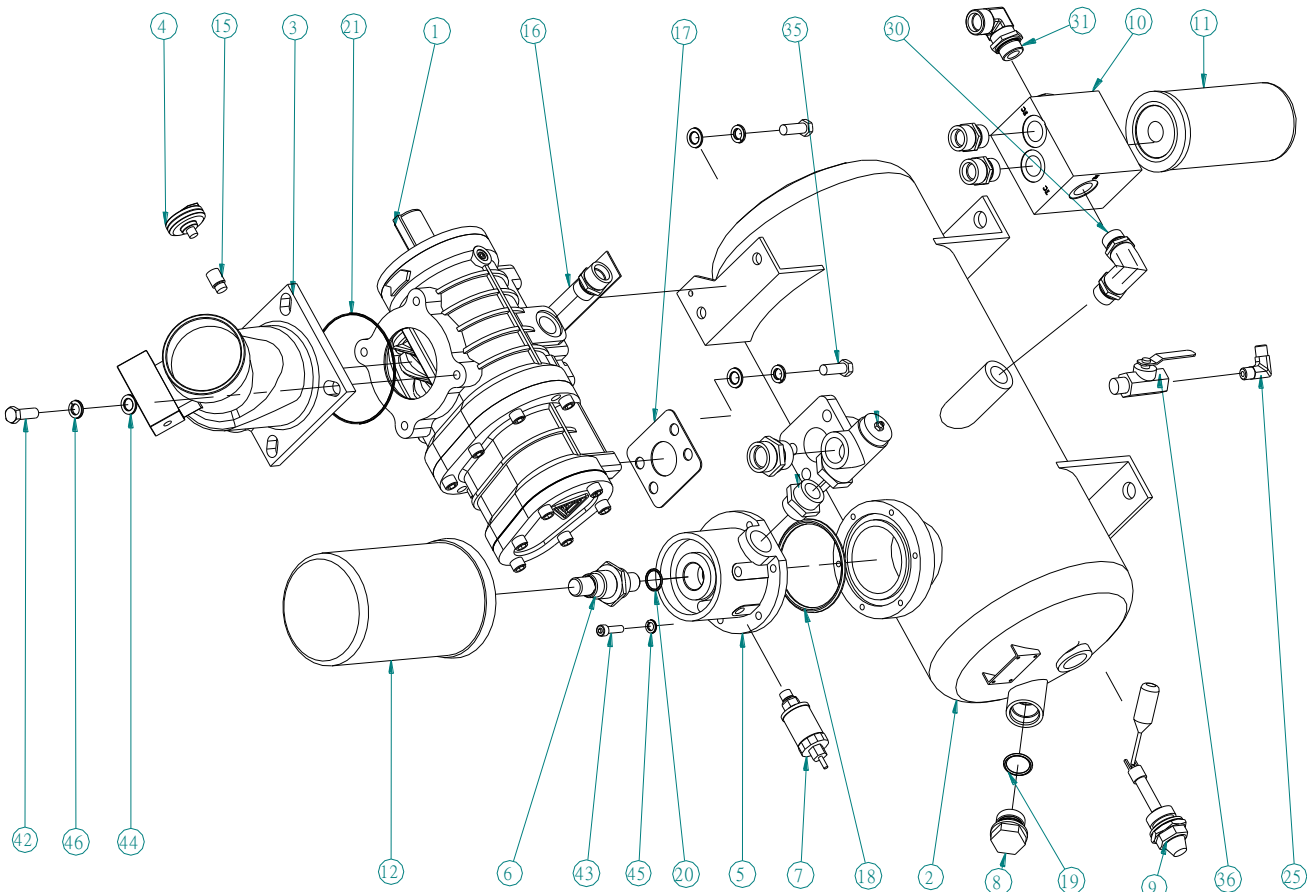
β - Will replace starter panel of like voltage and add part Pressure Switch RN18104-9 and 1/4" Close Nipple  
VA13DAB for Simple Controls

### Enclosure Assembly [A] & [B] 1483001



**BILL OF MATERIALS**

ITEM	QTY	PART NO.	NAME	SIZE	SPEC.	REFERENCE
1	1	1483067	BASE FRAME ASSY.			
2	1	1483068	FRONT RIGHT CORNER			Belong to 1483001
3	1	1483069	FRONT LEFT CORNER			Belong to 1483001
4	1	1483070	LEFT COVER			Belong to 1483001
5	1	1483071	UPPER COVER ASSY			Belong to 1483001
6	2	1483072	RIGHT COVER			Belong to 1483001
7	1	1483073	STARTER BOX COVER			Belong to 1483001
8	1	1483074	CONTROL PANEL			Belong to 1483001
9	1	1483075	VENT COVER			Belong to 1483001
10	1	1483076	UPPER R-REAR CVR.			Belong to 1483001
11	3	1483077	SUPPORT			Belong to 1483001
12	1	1483078	REAR SUPPORT			Belong to 1483001
13	1	1483079	BELT COVER			Belong to 1483001
14	2	1483080	KEY			Belong to 1483001
15	6	1483051	LOCK			Belong to 1483001
16	36	1489516	BOLT		M8x20,	
17	37	1489533	BOLT		M6x15,	
18	4	1489534	BOLT		M6x15	
19	1	1489535	BOLT		M6x20	
20	36	1489511	LOCKWASHER		M8	
21	36	1489508	PLAIN WASHER		M8	
22	5	1489536	LOCKWASHER		M8	
23	5	1489537	PLAIN WASHER		M8	



-

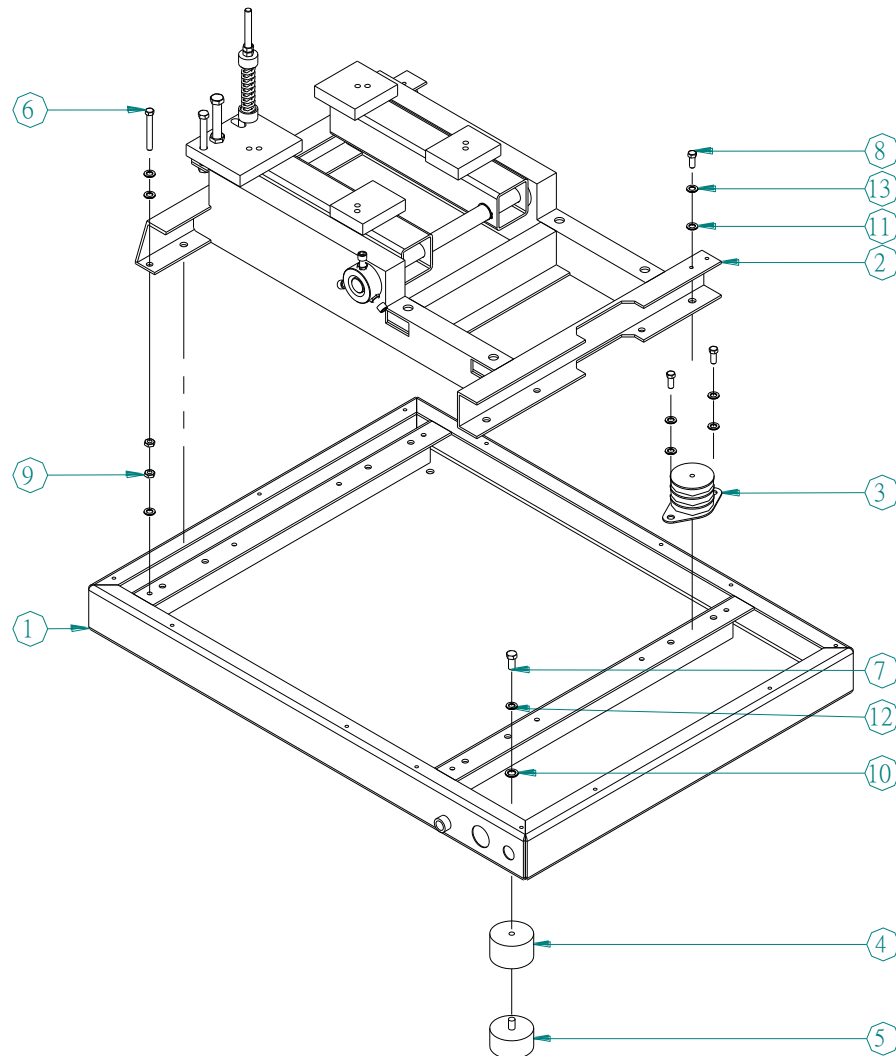
### Air End /Receiver Assembly [A] & [B]

BILL OF MATERIALS						
ITEM	QTY	Part No.	NAME	SIZE	SPEC.	REFERENCE
1	1	CS949-1	AIREND		BSA22D	
2	1	1485021	OIL/AIR RECEIVER			
3	1	1485019	INLET VALVE		RB60E	
4	1	1485029	AIR SUCTION SENSOR		GEM	
5	1	1485061	OIL SEPARATOR SEAT		AI	
6	1	1485004	O.F.S. RETURN TUBE		M36*1.5/M33*1.75	
7	1	1485045	PRESSURE TRANSMITTER		4~20mA, 0~16bar, 3M	Δ
8	1	1485062	OIL FILL CAP			
9	1	1485063	OIL LEVEL GUAGE		G1"	
10	1	1485064	THERMOSTATIC VALVE		71°C	
11	1	1485003	OIL FILTER ELEMENT		Φ62*212- M26*1.5 10μ	
12	1	1485001	OIL FINE SEPARATOR		Φ134*240- M33*1.75	
13	1	RN42817	SAFETY VALVE		1/2" 200PSI	
14	1	1485164	TEMP SENSOR		PT100, M12*1.5, L25mm, 3M	
15	1	1485065	ADAPTER		1/4"-1/8"	
17	1	1485163	PACKING			
18	1	1485066	O-RING		P100 Viton	
19	1	1485067	O-RING		P28 Viton	
20	1	1485068	O-RING		P22 Viton	
21	1	1485069	O-RING			Belong to 1485060
22	1	1485070	CHECK VALVE		1/4"	
25	1	1489014	NIPPLE		1/2"-90°-10mm	
26	1	1489063	JOINT		1/8"-90°-6mm	Belong to 1485074
27	1	1489064	ELBOW		1/4"-90°-M10*1	Belong to 1485074
28	1	1489019	BUSH		1/2"	
29	2	1489065	JOINT		1/4"-0°-6mm	Belong to 1485074
30	1	1489066	ELBOW		3/4"-90°-3/4"	Belong to 1485074
31	1	1485053	JOINT		3/4"-90°-20mm	Belong to 1485074
32	1	1485014	PLUG		M26*1.5	Belong to 1485074
33	1	1489055	PLUG		1/2"	Belong to 1485074
34	1	1489067	PLUG		1/4"	ξ Belong to 1485074
35	2	1489537	BOLT		M12x30	
36	1	1489068	BALL VALVE		1/2"	
37	1	1489069	TEE		1/4"-D8-D6	Belong to 1485074

<b>BILL OF MATERIALS (Con't)</b>						
<b>ITEM</b>	<b>QTY</b>	<b>Part No.</b>	<b>NAME</b>	<b>SIZE</b>	<b>SPEC.</b>	<b>REFERENCE</b>
38	1	1489070	JOINT		1/4"-90° -8mm	Belong to 1485074
39	1	1485071	STEEL PIPE		Stainless	Belong to 1485117
40	1	1485167	STEEL PIPE		Stainless	Belong to 1485117
41	1	1485073	STEEL PIPE		Stainless	Belong to 1485117
42	8	1489558	BOLT		M16×35	
43	6	1489528	BOLT		M8×30	
44	10	1489524	PLAIN WASHER		M16	
45	6	1489511	LOCK WASHER		M8	
46	10	1489523	LOCK WASHER		M16	

Δ – Will be replaced by Pressure Gauge RN30322 for simple controls

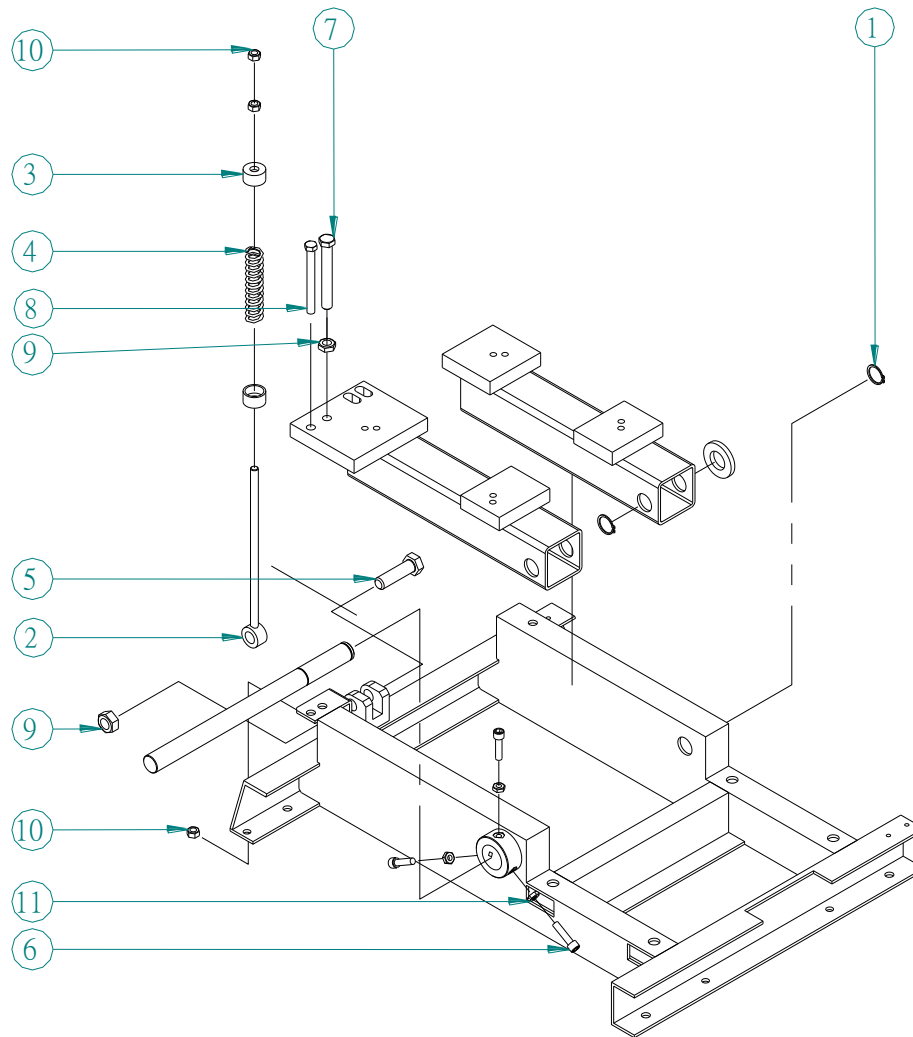
ξ – Will be replaced by ASP Switch RN18134 for simple controls



**Base Frame Assembly, 1483001**

**BILL OF MATERIALS**

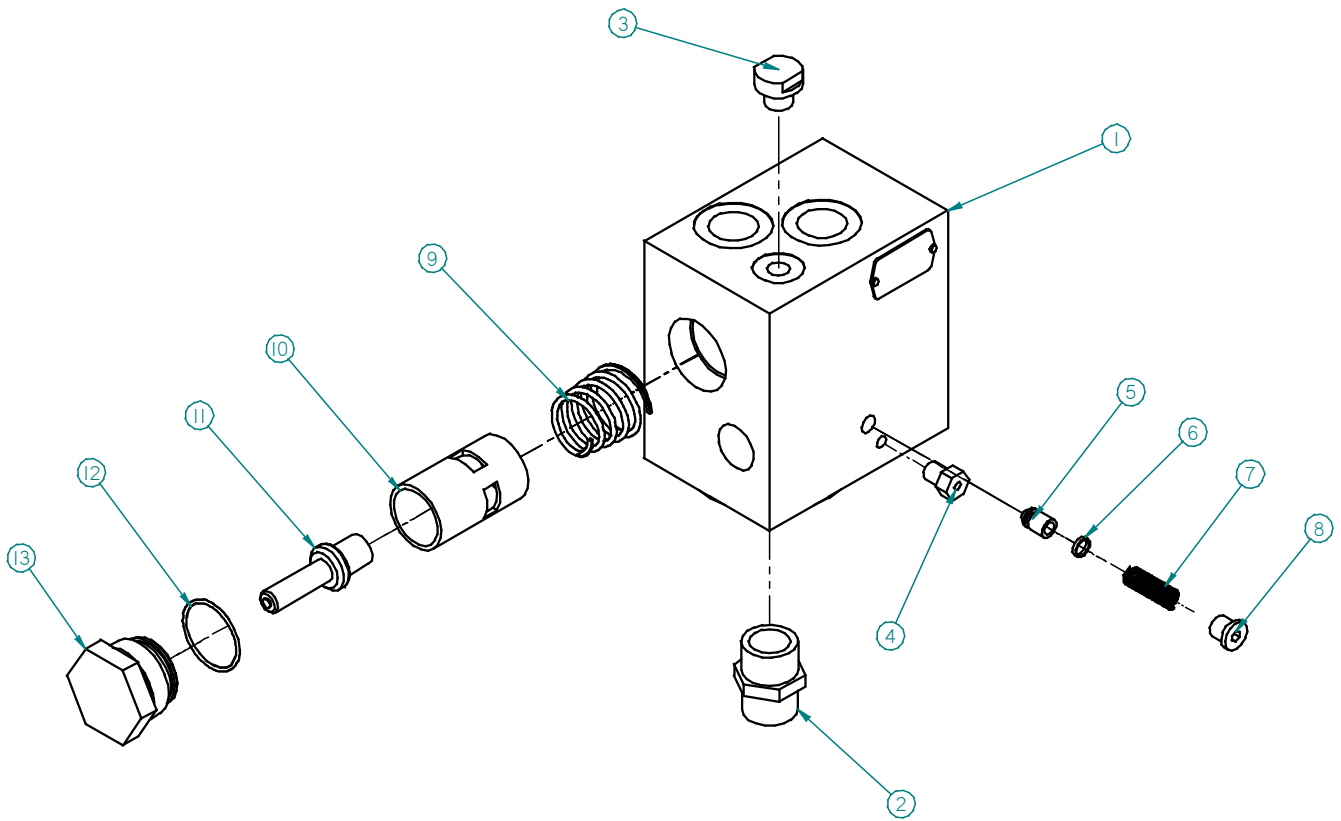
ITEM	QTY	PART NO.	NAME	SIZE	SPEC.	REFERENCE
1	1	1483081	BASE FRAME			Belong to 1483067
2	1	1483082	SUB FRAME ASY.			Belong to 1483067
3	4	1489071	VIBRATION ABSORBER			Belong to 1483067
4	4	1489072	BASE FEET			Belong to 1483067
5	4	1489073	RUBBER FEET			Belong to 1483067
6	4	1489539	BOLT		M10*80	Belong to 1483067
7	4	1489540	BOLT		M12*25	Belong to 1483067
8	12	1489541	BOLT		M10*25	Belong to 1483067
9	8	1489542	NUT		M10	Belong to 1483067
10	4	1489510	PLAIN WASHER		M12	Belong to 1483067
11	20	1489509	PLAIN WASHER		M10	Belong to 1483067
12	4	1489513	LOCKWASHER		M12	Belong to 1483067
13	16	1489512	LOCKWASHER		M10	Belong to 1483067



### Motor & Air End Base Assembly, 1483082

#### BILL OF MATERIALS

ITEM	QTY	PART NO.	PART NAME	SPEC.	SIZE	REFERENCE
1	2	1489543	C-TYPE SNAP RING	D30		Belongs TO 1483082
2	1	1489544	BOLT	M12*316		Belongs TO 1483082
3	2	1489545	SEAT			Belongs TO 1483082
4	1	1483083	SPRING			Belongs TO 1483082
5	1	1489074	PIN BOLT	M16		Belongs TO 1483082
6	3	1489546	BOLT	M10*40		Belongs TO 1483082
7	1	1489547	BOLT	M16*120		Belongs TO 1483082
8	1	1489548	BOLT	M12*120		Belongs TO 1483082
9	2	1489522	NUT	M16		Belongs TO 1483082
10	3	1489507	NUT	M12		Belongs TO 1483082
11	3	1486233	NUT	M10		Belongs TO 1483082

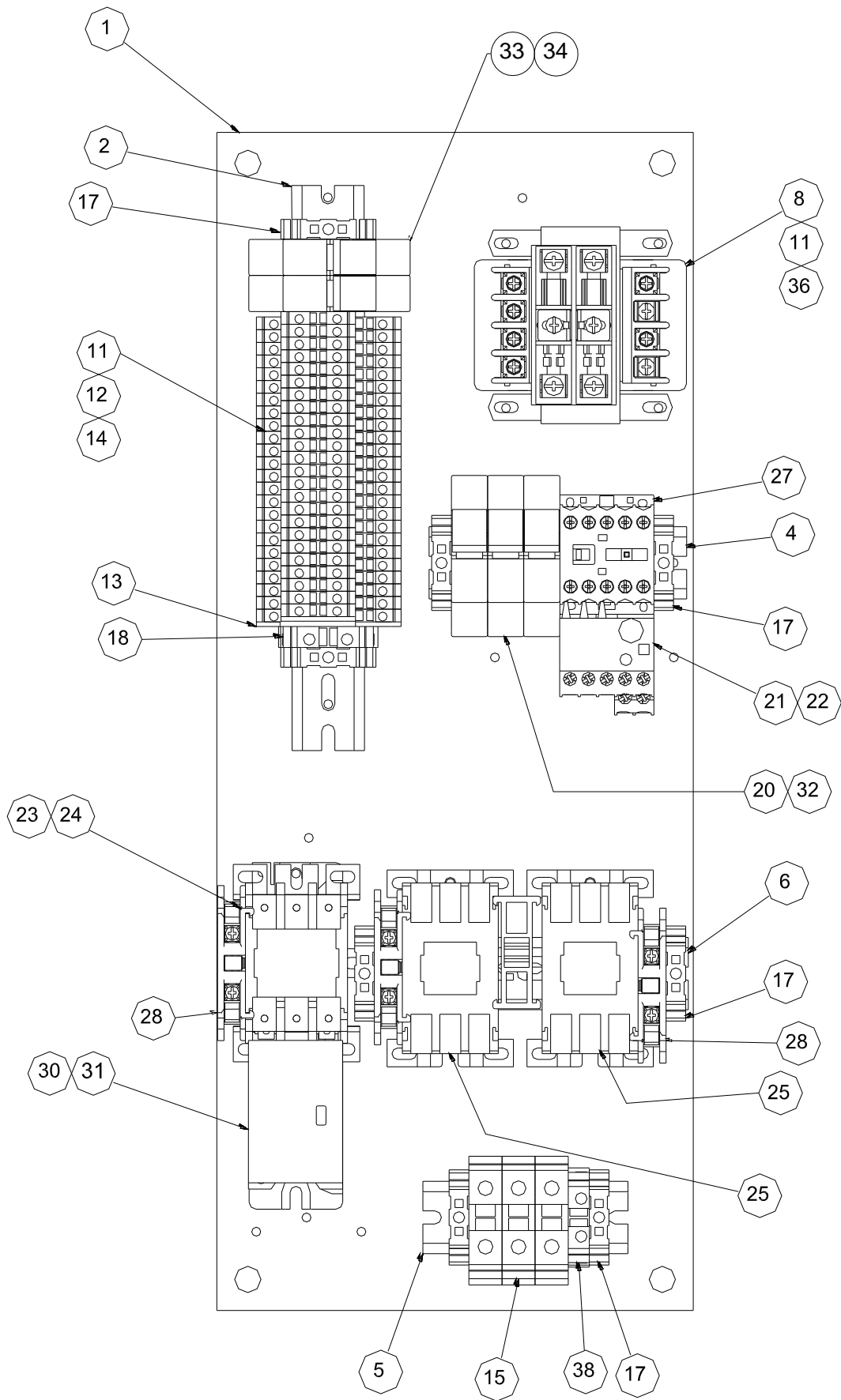


**Thermostatic Valve Assembly, 1485064**

**BILL OF MATERIALS**

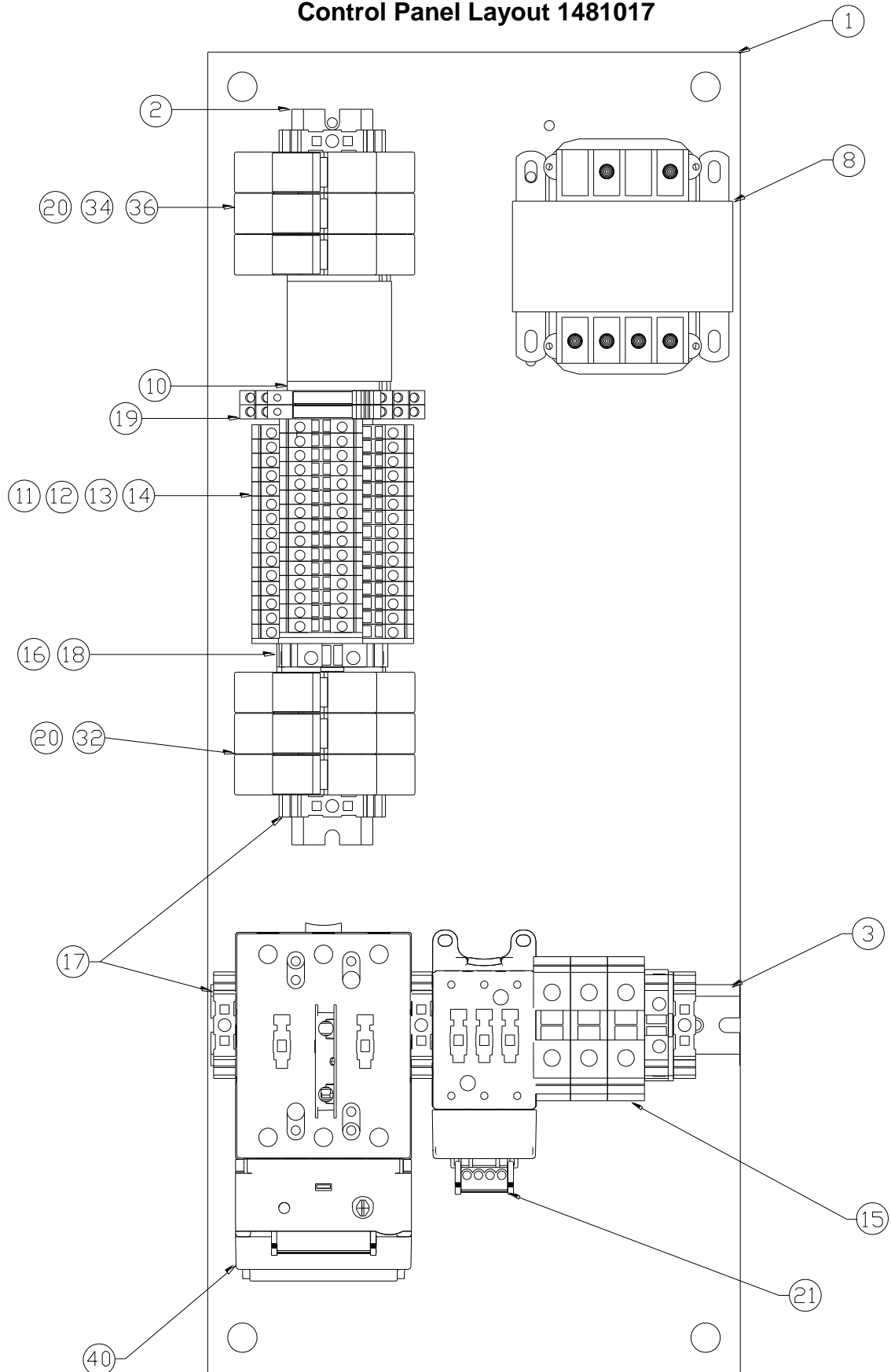
ITEM	QTY	PART NO.	PART NAME	SPEC.	SIZE	REFERENCE
1	1	N/A	BODY			
2	1	N/A	FILTER FITTING			
3	1	N/A	PLUG			
4	1	N/A	PLUG			
5	1	N/A	BYPASS			
6	1	1489103	O-RING			
7	1	N/A	SPRING			
8	1	N/A	PLUG			
9	1	N/A	SPRING			
10	1	N/A	PISTON			
11	1	1489101	ELEMENT			
12	1	1489102	O-RING			
13	1	N/A	PLUG			

### Control Panel Layout 1481110, 1481115



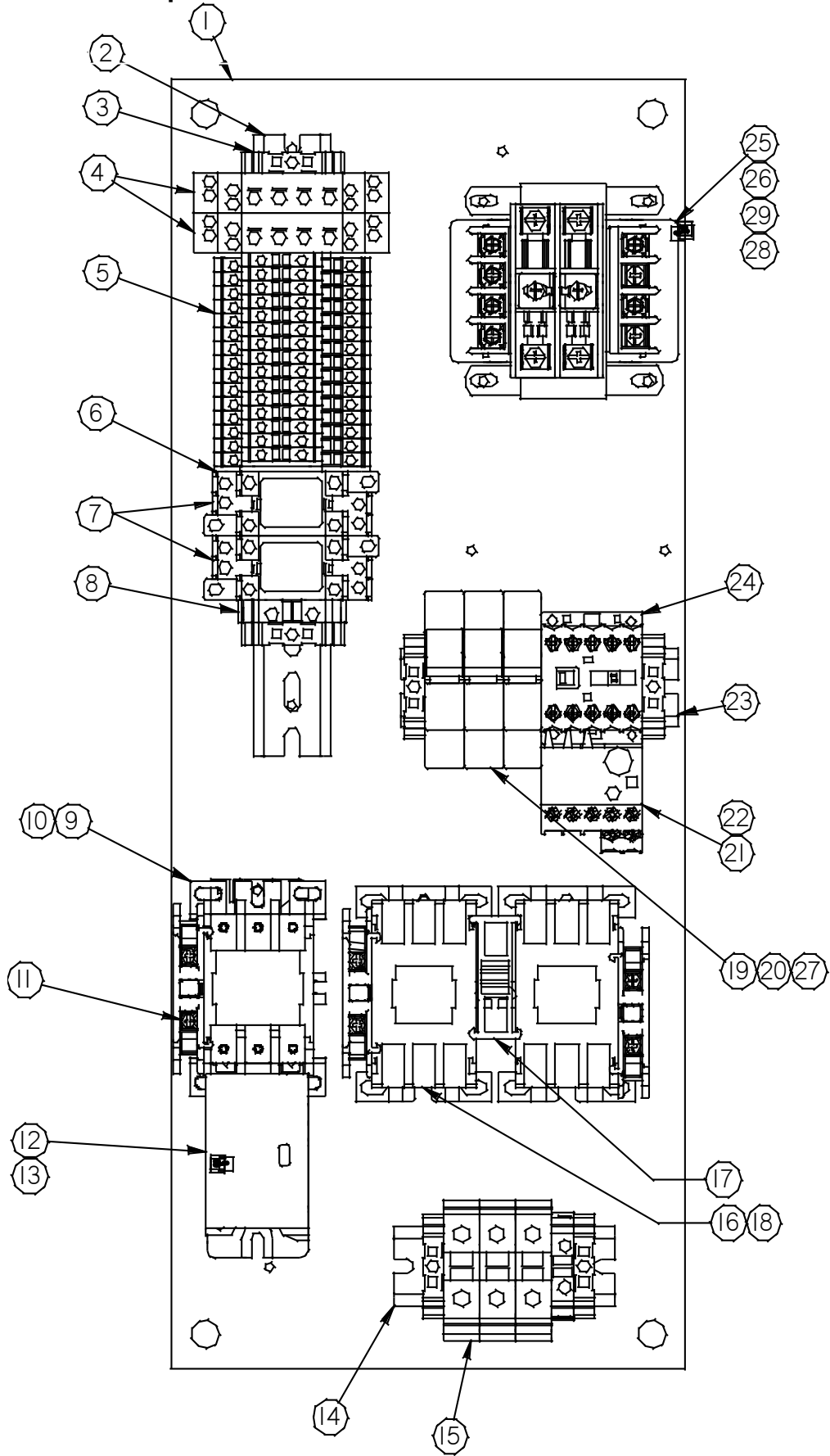
BILL OF MATERIAL						
No.	Part No.	Part Name	Spec.	Qty.	Remark	Panel
1	1481242	PANEL		1		Both
2	1481243	DIN RAIL	12.5	1		Both
4	1481266	DIN RAIL	10.8"	1		Both
5	1481264	DIN RAIL	3.9"	1		Both
6	1481245	DIN RAIL	6.25"			Both
8	RN18327-3	TRANSFORMER	120V	1	200-460V	Both
8	VE246	TRANSFORMER	120V	1	575V	Both
10	1481225	SPACER		2		Both
11	1481226	MARK STRIP		56		Both
12	RN18397	2 TIER TERMINAL BLOCK		15		Both
13	1471045	END PLATE		1		Both
14	1481229	10 POSITION BRIDGE		1		Both
15	1481249	TERMINAL BLOCK	UT35	3		Both
16	1481231	TERMINAL END PLATE		1		Both
17	1481231	END STOP		4		Both
18	1481233	GROUND TERMINAL		1		Both
19	1481251	RELAY		2		Both
20	1471039	FUSEHOLDER	CLASS CC	6		Both
21	1481423	OVERLOAD	2.4-4A	1	SE20-30 200-230V	1481110
22	1481422	OVERLOAD	1.6-2.4A	1	SE20-30 460-575V	1481115
23	1481429	STARTER	50A	1	SE20-25 200-230V, SE30 230V	1481110
24	1481428	STARTER	30A	1	SE20-30 460-575V	1481115
25	1481428-1	STARTER	25A	2	SE20-25 200-230V, SE30 230V	Both
27	1481424	STARTER	A SZ	1		Both
28	1481260	AUXRILLARY CONTACT		3		Both
30	RN18960-2	OVERLOAD	75A	1		1481110
31	RN18961-1	OVERLOAD	32A	1		1481115
32	VE397	FUSE	7A	3	200-230V	1481110
	VE383	FUSE	3.5A	3	460V	1481115
	VE396	FUSE	3A	3	575V	1481115
33		FUSE	.6A	1		Both
34	VE335	FUSE	2A	2	200-230V	1481110
	VE336	FUSE	1A	2	460V	1481115
	RN18343	FUSE	.8A	2	575V	1481115
36	RN18344-1	FUSE	1.4A	1		Both
38	1481233	GROUND BLOCK		1		Both

### Control Panel Layout 1481017



BILL OF MATERIAL						
No.	Part No.	Part Name	Spec.	Qty.	Remark	Panel
1	1481242	PANEL		1		1481017
2	1481243	DIN RAIL	16.75"	1		1481017
3	1481244	DIN RAIL	9.00"	1		1481017
8	RN18327-3	TRANSFORMER	120V	1	200	1481017
10	1481225	SPACER		2		1481017
11	1481226	MARK STRIP		56		1481017
12	RN18397	2 TIER TERMINAL BLOCK		15		1481017
13	1471045	END PLATE		1		1481017
14	1481229	10 POSITION BRIDGE		1		1481017
15	1481249	TERMINAL BLOCK	UT35	3		1481017
16	1481231	TERMINAL END PLATE		1		1481017
17	1481231	END STOP		4		1481017
18	1481233	GROUND TERMINAL		2		1481017
19	1481251	RELAY		2		1481017
20	1471039	FUSEHOLDER	CLASS CC	6		1481017
21	1481405 1481405-2	STARTER OVERLOAD	6A 1.4-4.0A	1	SE20-30 200-230V	1481017
32	VE397	FUSE	7A	3		1481017
34	VE335	FUSE	2A	2		1481017
36	RN18344-1	FUSE	1.4A	1		1481017
40	1481410 1481410-1 1481410-2	STARTER CONTACTOR OVERLOAD	100A 31-100A	1	SE30 200V	1481017

### Simple Controls Starter Panel 1481047 & 1481049

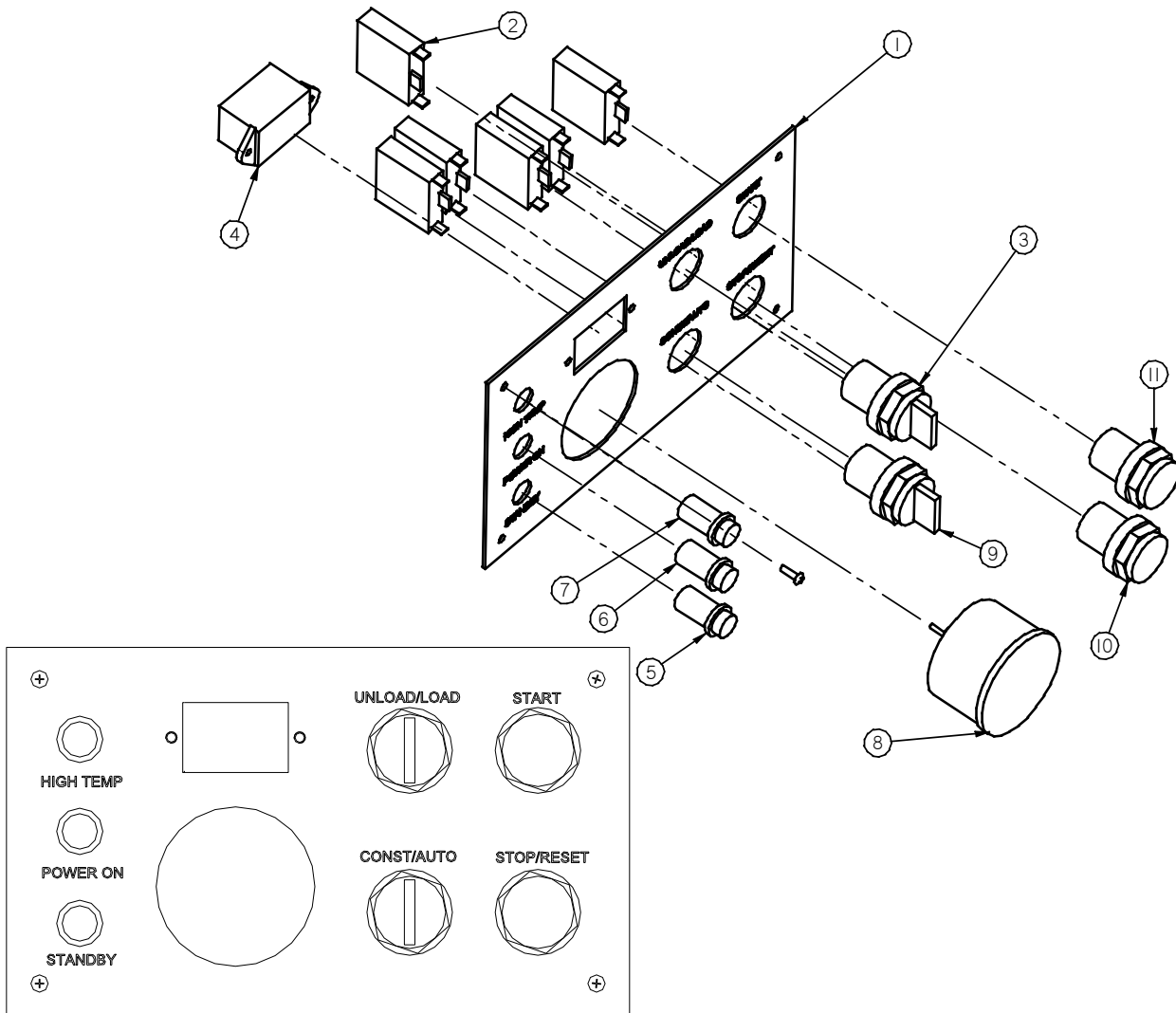


BILL OF MATERIAL						
No.	Part No.	Part Name	Spec.	Qty.	Remark	Panel
1	1481242	BACK PANEL		1		BOTH
2	1481266	DIN RAIL	10.8"	1		BOTH
3	1471045	END STOP		6		BOTH
4	1481263	TIMING RELAY		2		BOTH
5	RN18397	2 TIER TERMINAL BLOCK		24		BOTH
6	1471045	END PLATE		2		BOTH
7	1481262	RELAYS	2DTDP	2		BOTH
8	1481233	GROUND TERMINAL	20-6 AWG	1		BOTH
9	1481428	STARTER	30A	1		1481049
10	1481429	STARTER	50A	1		1481047
11	1481260	AUXILLARY CONTACT		3		BOTH
12	RN18961-1	OVERLOAD RELAY	75A	1		1481047
13	RN18960-2	OVERLOAD RELAY	32A	1		1481049
14	1481264	DIN RAIL	3.9"	1		BOTH
15	1481249	TERMINAL BLOCK	UT35	3		BOTH
16	1481428-1	CONTACTOR	25A	2		1481049
17	1471037	INTERLOCK	00-2	1		BOTH
18	1481429-1	CONTACTOR	50A	2		1481047
19	VE397	FUSE	7A	3		1481047
20	VE376	FUSE	4A	3		1481049
21	1481423	FAN OVERLOAD	2.4A-4.0A	1		1481047
22	1481422	FAN OVERLOAD	1.6A-2.4A	1		1481049
23	1481265	DIN RAIL	4.9"	1		BOTH
24	1481431	STARTER	A SIZE	1		BOTH
25	RN18345-1	FUSE	1.5A	2		1481049
26	RN18393	FUSE	3A	2		1481047
27	1471039	FUSEHOLDER	CLASS CC	3		BOTH
28	RN18327-3	TRANSFORMER	120V/24V	1	200-460V	BOTH
29	VE335	FUSE	2A	1		BOTH

The 1481047 panel is used on SE20, SE25 200-230V,SE30 230V

The 1481049 panel is used on SE20-30 460-575V

### Simple Controls Controller



BILL OF MATERIAL						
No.	Part No.	Part Name	Spec.	Qty.	Remark	Panel
1	1481039	CONTROL PLATE		1		
2	RN18118-1	CONTACT		2		
3	RN18104-7	SWITCH	UNLOAD/LOAD	1		
4	1330048	HOURMETER		1		
5	RN18212	LIGHT	AMBER	1		
6	RN18214	LIGHT	GREEN	1		
7	RN18210	LIGHT	RED	1		
8	1481252	TEMP SWITCH GAUGE	230°F	1		
9	RN18104-9	SWITCH	CONST/AUTO	1		
10	RN18118	BUTTON	STOP/RESET	1		
11	RN18116	BUTTON	START	1		