

CURTIS

R/S 60D thru R/S 100D

PARTS LIST

DIRECT DRIVE

AIR COOLED

LOT NUMBER:

R/S 60	15-21
R/S 75	16-20
R/S 100	16-21

HOW TO ORDER PARTS

Give name and part number as shown in parts list and serial number. Serial number is on nameplate attached to control panel of unit.

IMPORTANT

Make a permanent record of the Model and Serial numbers of your machine here. You'll save time and expense by including this reference identification on replacement parts

MODEL : _____

SER. NO.: _____

CURTIS-TOLEDO, INC.

1905 KIENLEN AVENUE, ST. LOUIS, MISSOURI 63133

Tel. (314) 383-1300

Fax (314) 381-1439

E-MAIL: info@curtistoledo.com



DANGER

Air used for breathing or food processing must meet OSHA 29CFR 1910.134 or FDA 21CFR 178.3570 Regulations. Failure to do so may cause severe injury or death

INTRODUCTION

HOW TO USE THE PARTS LIST

Using the List of Illustrations obtain the figure number of the assembly in which your part is located. Go to the appropriate figure and locate your part on the illustration. Using the key number, find the part on the parts list.

LIST OF ILLUSTRATIONS

<u>Title</u>	<u>Page</u>
Major Components Group	2
Air And Oil Piping Group	6
Electrical Components Group (FVM)	10
Electrical Components Group (Y-Delta)	14
Enclosure Group	18
Routine Maintenance Kits	20



WARNING

Personal injury and/or equipment damage will result by failing to pay attention to the vital safety information and instruction in the operating and instruction manual. Carefully read, understand, and retain all safety information and instructions before operating this unit.

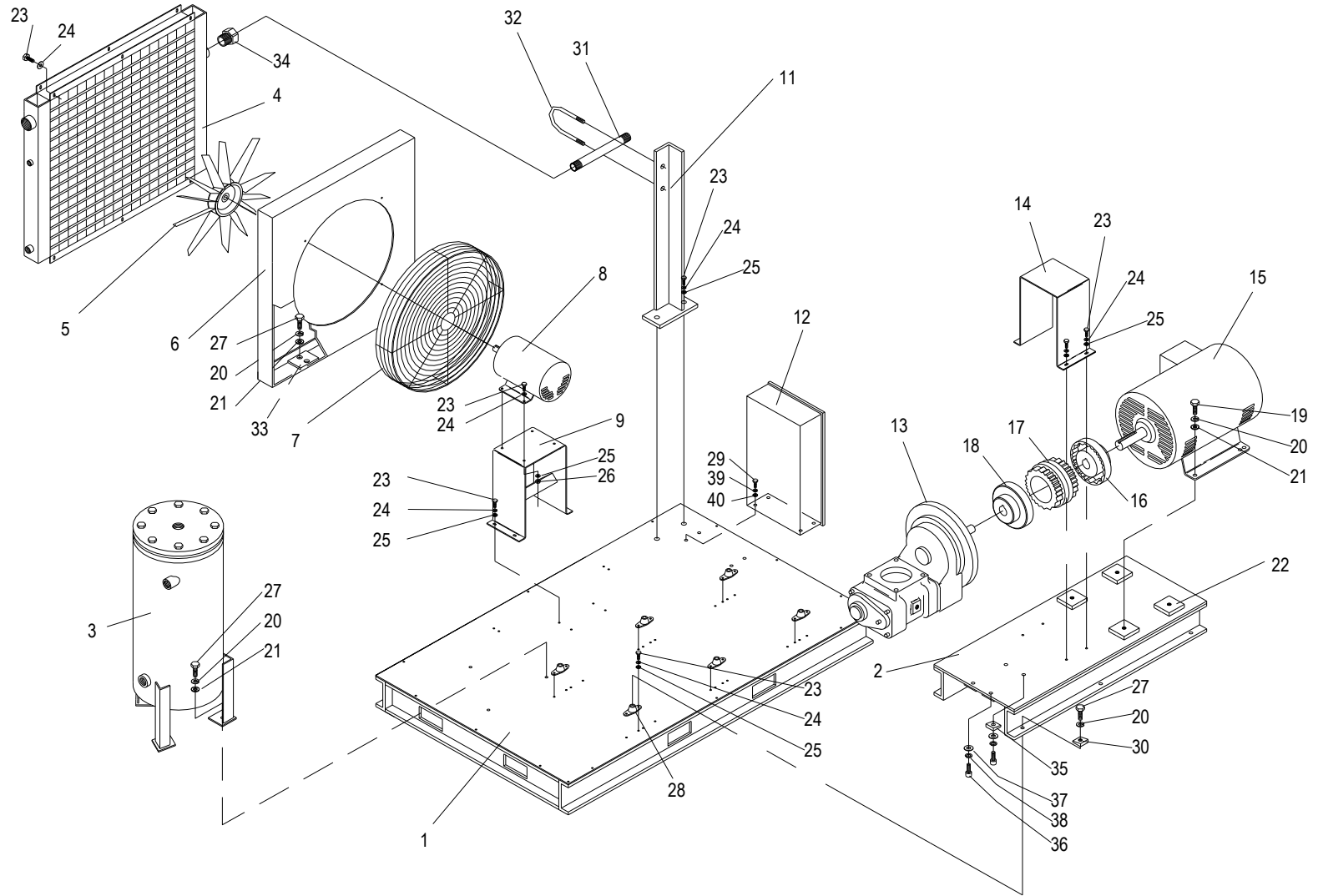


FIGURE 1: MAJOR COMPONENTS GROUP

PARTS LIST FOR MAJOR PARTS GROUP (REF. FIG. 1)

CAP-251

ITEM NO.	DESCRIPTION	QTY.	R/S 60	R/S 75	R/S 100
1	MAIN BASE ASSEMBLY	1	RN10103	RN10106	<
2	SUB BASE, MOTOR	1	RN10103-4 (100,125 PSI)	RN10108-5 (100,125,150 PSI)	RN10108-6 (100,125 PSI)
		1	RN10103-5 (150,175 PSI)	N/A	RN10108-5 (150,175 PSI)
3	SEPARATOR, OIL/AIR	1	RN10223-1	<	<
		1	RN10223-2 LOT#17	<	RN10223-2 LOT#18
4	COOLER, AIR/OIL	1	RN32219	<	RN32229
5	BLADE, FAN	1	RN32421	RN32408-2	RN32408
6	SHROUD, FAN	1	RN10468	RN10470	RN10472
7	GUARD, FAN	1	RN10456	RN10460	<
*8	MOTOR, FAN, 3 PHASE, 60 Hz, 230/460V, ODP	1	M29	VM908	<
9	MOUNT, FAN MOTOR	1	RN10120-6	RN10120-6	RN10120-7
10	MOISTURE SEPARATOR	1	RN34120	RN34127	RN34125
11	DISCHARGE PIPE SUPPORT	1	RN10148	<	<
12	PANEL, CONTROL	1	SEE TABLE 2 & 3		
13	AIR END	1	SEE TABLE 1		
14	COUPLING GUARD	1	RN10340-7	RN10340-1	RN10340-3
*15	MOTOR, MAIN, 3 PHASE, 60 Hz	1	SEE TABLE 1		
16	COUPLING, MOTOR FLANGE		SEE TABLE 1		
17	SLEEVE		SEE TABLE 1		
18	COUPLING, AIR END FLANGE		SEE TABLE 1		
19	HHCS 1/2-13UNC X 1-3/4", GRADE 5	4	VH12PN	<	<
20	LOCKWASHER-KANTLINK-LIGHT, 1/2"	17	VH35P	<	<
21	WASHER-STEEL CUT, 1/2"	11	VH32P	<	<
22	MOTOR MOUNTING BLOCKS	4	RN10135	<	<
23	SCREW, HEX HEAD CAP, 5/16-18 x 3/4" LG.	32	VH12HF	<	<
24	LOCKWASHER - 5/16"	32	VH35H	<	<
25	WASHER, FLAT - 5/16"	32	VH32H	<	<
26	NUT, HEX - 5/16"	4	VH15H	<	<
27	HHCS 1/2-20 UNF X 1 1/4"	13	VH12NK	<	<
28	MOUNTS-VIBRATION	6	RN60255	<	<
29	SCREW, HEX HEAD CAP, 3/8-16 x 1" LG.	4	VH12KH	<	<
30	WASHER-SQUARED BEVELED, 1/2"	6	VH50N	<	<
31	NIPPLE	1	VA13HYA	VAC837	VAD822
32	U-BOLT, FULL CIRCLE	1	VH2210	VH2211	<
33	STEEL PLATE MOUNTING, FAN COOLER ASSEMBLY	2	RN10468-1	RN10470-1	<
34	BUSHING, 2" NPT X 1-1/2"	1	VA12JHP	N/A	N/A
35	WASHER-SQUARE, BEVELED, 1/2"	2	N/A	VH50N	N/A
36	BOLT	4	VH1433	<	VH1435
37	WASHER, FLAT	4	VH1239	<	VH1238
38	LOCKWASHER	4	VH1240	<	VH1234
39	LOCKWASHER - 3/8"	4	VH35K	<	<
40	WASHER, FLAT - 3/8"	4	VH32K	<	<
** 41	NIPPLE	1	VA24HAA	VA24JAA	<
** 42	VALVE, BALL	1	VV536	VV537	<
** 43	DRAIN COCK 1/4"	1	VV514	<	<

* FOR MOTOR PART NUMBERS OTHER THAN 230/460V ODP, CONSULT FACTORY

** PARTS NOT SHOWN ON DRAWING

MODEL	PRES	AIR END COUPLING			COUPLING SLEEVE	MOTOR COUPLING			AIR END MODEL	AIR END P/N	MOTOR/ODP FRAME	MOTOR/ODP, 230/460V P/N
		FLANGE	BUSHING#	BUSH. TYPE		FLANGE	BUSHING#	BUSH. TYPE				
60D	100	RN14519-7	RN14177-2	SK-45mm	RN14511-1	RN14519-7	RN14177-5	SK-1 7/8	E25	CS645	326TS	RN19062
S10B	125	RN14519-7	RN14177-2	SK-45mm	RN14511-1	RN14519-7	RN14177-5	SK-1 7/8	E25	CS645	326TS	RN19062
	150	RN14519-7	RN14177-2	SK-45mm	RN14511-1	RN14519-7	RN14177-8	SK-2 3/8	E25G	CS646-4	364T	RN19060-1
	175	RN14519-7	RN14177-2	SK-45mm	RN14511-1	RN14519-7	RN14177-8	SK-2 3/8	E25G	CS646-16	364T	RN19060-1
75D	100	RN14517-7	RN14180-1	SF-45mm	RN14512-1	RN14517-7	RN14179-2	SF-2 3/8	E25G	CS646-12	365T	RN19078
S11B	125	RN14517-7	RN14180-1	SF-45mm	RN14512-1	RN14517-7	RN14179-2	SF-2 3/8	E25G	CS646-13	365T	RN19078
	150	RN14517-7	RN14180-1	SF-45mm	RN14512-1	RN14517-7	RN14179-2	SF-2 3/8	E25G	CS646-7	365T	RN19078
	175	RN14517-7	RN14180-1	SF-45mm	RN14512-1	RN14517-7	RN14179-1	SF-1 7/8	E25	CS645	364TS	RN19077
100D	100	RN14517-7	RN14180-2	SF-65mm	RN14512-1	RN14517-7	RN14179-1	SF-1 7/8	B251	CS742-1	365TS	RN19101-6
S11B	125	RN14517-7	RN14180-2	SF-65mm	RN14512-1	RN14517-7	RN14179-1	SF-1 7/8	B251	CS742-1	365TS	RN19101-6
	125	RN14517-7	RN14180-1	SF-45mm	RN14512-1	RN14517-7	RN14179-3	SF-2 7/8	E25G	CS646-2	404T	RN19100
	150	RN14517-7	RN14180-1	SF-45mm	RN14512-1	RN14517-7	RN14179-3	SF-2 7/8	E25G	CS646-8	404T	RN19100
	175	RN14517-7	RN14180-1	SF-45mm	RN14512-1	RN14517-7	RN14179-3	SF-2 7/8	E25G	CS646-1	404T	RN19100
100AD	100	RN14517-7	RN14180-2	SF-65mm	RN14512-1	RN14517-7	RN14179-3	SF-2 7/8	E75	CS647-11	404T	RN19100

TABLE 1: AIR END FLANGE, MOTOR, COUPLING

NOTE: FOR MOTORS OTHER, THAN 230/460V, ODP CONSULT FACTORY

NOTES

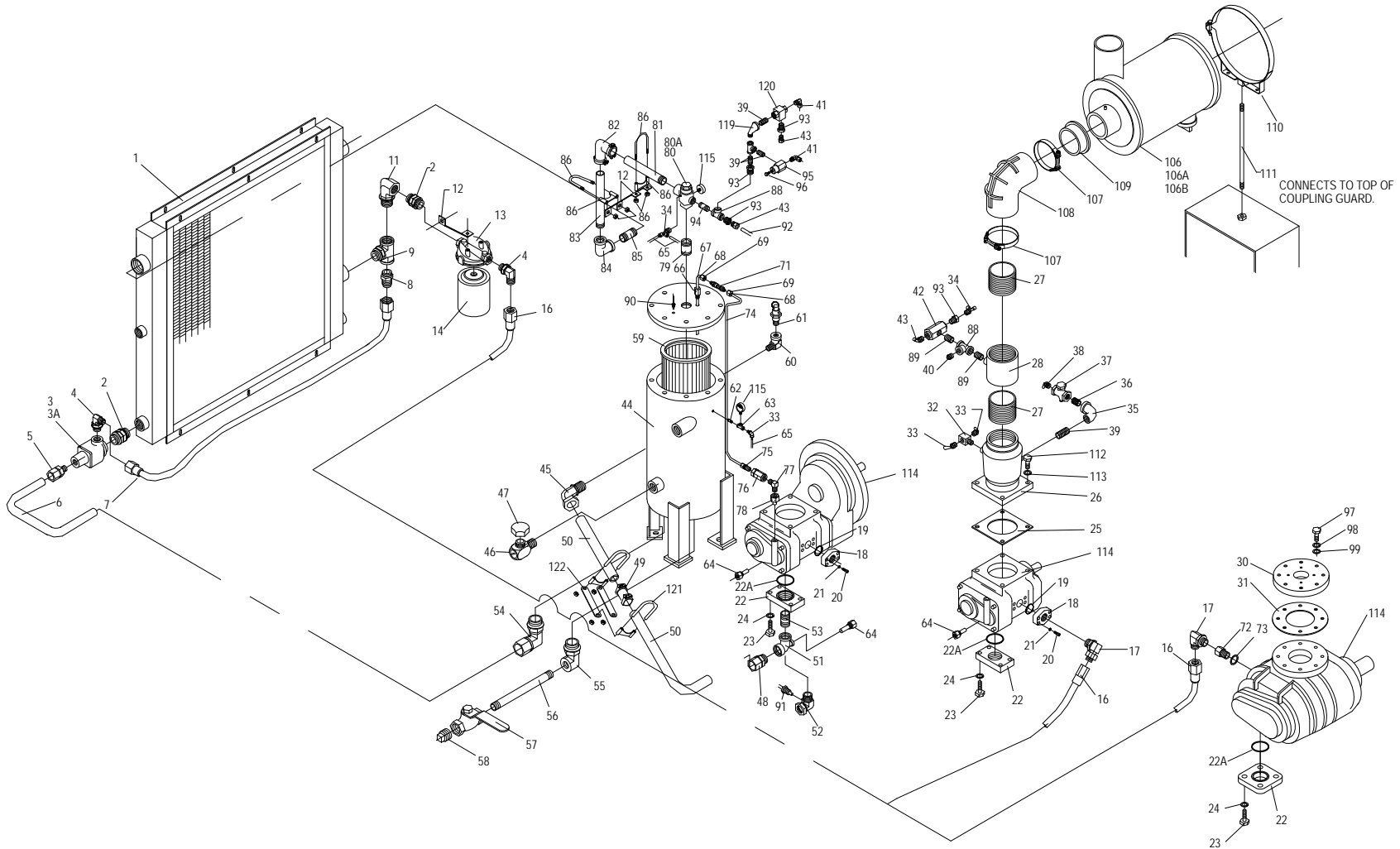


FIGURE 2: AIR AND OIL PIPING GROUP
6

PARTS LIST FOR AIR AND OIL PIPING GROUP (REF. FIG. 2)

CAP-251

ITEM NO.	DESCRIPTION	QTY.	R/S 60	R/S 75	R/S 100
1	COOLER, AIR / OIL	1	RN32219	<	RN32229
2	UNION, STRAIGHT THREAD, SAE 16	2	VAB702	<	<
3	THERMO VALVE, SAE 16, 170F	1	RN42417	<	<
3A	THERMO VALVE SERVICE KIT, 170F	1	RN42417-1	<	<
4	CONNECTOR, ELBOW, 1-5/16"-12 UN 37FL X SAE 16	1	VAB708 (2)	<	VAB708 (1)
5	CONNECTOR, 1" OD X SAE 16	1	RN52144	VAB705	RN52144
6	TUBE, 1" OD, SEPARATOR TO THERMO VALVE	1	OFE984	OFE1001	OFE984
7	HOSE ASSY, 7/8" ID	1	RN60195	<	<
8	CONNECTOR, 1-5/16"-12, 37 FL, SAE 16 STRAIGHT	1	VAB725	<	<
9	BRANCH TEE, STRAIGHT THREAD, SAE 16	1	VAB726	<	<
11	ELBOW, STRAIGHT THREAD, SAE 16	1	VAB727	<	<
12	BRACE	3	CS897	<	<
13	OIL FILTER HEAD, SAE 16	1	RN28107	<	<
14	OIL FILTER ELEMENT	1	RN28204	<	RN28205
16	HOSE ASSY, 7/8" ID	1	RN60194	RN60193	RN60169
17	CONNECTOR, ELBOW, 1-5/16"-12 UN 37FL X SAE 16, O-RING	1	N/A	N/A	VAA793
18	FLANGE, 1" OD, OIL INJ. E25	1	RN10677-2	<	N/A
19	O-RING	1	RN10677-1	<	N/A
20	SHCS M10 X 1.5 X 35	4	VH1453	<	N/A
21	LOCKWASHER, M10 FOR SOCKET SCREWS	4	VH1242	<	N/A
22	FLANGE, 2" NPT	1	RN10676-4	<	RN10675-2
22A	O-RING	1	RN10676-5	<	RN10675-3
23	BOLT, M16 X 2.0 X 45mm	4	VH1440	<	<
24	LOCKWASHER, 16mm	4	VH1234	<	<
25	GASKET, INLET VALVE	1	RN24577-1	<	<
26	VALVE INLET, 4"	1	RN24577	<	<
27	NIPPLE, 4"NPT	1	VA13NAA (2)	<	VA13NAA (1)
28	COUPLING, 4" & 1/2"	1	RN24577-2	<	<
30	ADAPTER FLANGE	1	N/A	N/A	RN10685
31	GASKET, ADAPTER FLANGE	1	N/A	N/A	RN10685-1
32	VALVE, SHUTTLE, 1/4"	2	RN42105	<	<
33	CONNECTOR, 1/4OD X 1/4NPT, ELBOW	3	RN52150-2	<	<
34	MALE RUN TEE 1/4 OD X 1/4 OD	2	VA745	<	<
35	ELBOW, REDUCING, 3/8" X 1/4"	1	VA18CBP	<	<
36	NIPPLE, CLOSE, 3/8"NPT	1	VA13CAB	<	<
37	CHECK VALVE, INLINE, 3/8" NPT	1	VV832	<	<
38	CONNECTOR 3/8 OD X 3/8 NPT MALE	1	RN52150-10	<	<
39	NIPPLE, CLOSE, 1/4"NPT	4	VA13BAA	<	<
40	CONNECTOR, STR., 1/2" NPT X 3/8" OD	1	VA14DEE	<	<
41	CONNECTOR, STR., 1/4" NPT X 1/4" OD,	1	RN52150-5	<	<
42	VALVE BLOW DOWN, 1/2"	1	RN18425	<	<
43	CONNECTOR, ELBOW, 3/8ODX1/2NPT MALE	2	RN52150-17	<	<
44	AIR / OIL SEPARATOR	1	RN10223-1	<	<
	AIR / OIL SEPARATOR	1	RN10223-2 LOT#17	<	RN10223-2 LOT#18
45	MALE ELBOW, 2" OD TUBE X 2" NPT	1	VAB742	<	<
	MALE ELBOW, 2" OD TUBE X SAE 32	1	VAB780 LOT#17	<	VAB780 LOT#18

PARTS LIST FOR AIR AND OIL PIPING GROUP (REF. FIG. 2)

CAP-251

ITEM NO.	DESCRIPTION	QTY.	R/S 60	R/S 75	R/S 100
46	OIL FILL & SIGHT GLASS	1	RN52171	<	<
47	CAP, OIL FILLER / SIGHT GLASS	1	CS741	<	<
48	MALE CONNECTOR, 2"OD X 2"NPT	1	VAB743	N/A	VAB743
49	COUPLING, 2" FLEX	1	RN60226	<	<
50	TUBE STEEL, 2"OD	1	OFE1000	<	<
51	REDUCING TEE, 2" X 1/2" X 2"	1	VAD814	N/A	VAD814
52	ELBOW MALE, 2"OD X 2"NPT	1	N/A	RN52184	N/A
53	NIPPLE, 2"NPT, SHORT EXTRA HEAVY	1	VA13JLA	-	VA13JLA
54	CONNECTOR, ELBOW, SAE16 X 1"OD	1	RN52144	<	<
55	ELBOW FEMALE, 1-1/16-12 UN X 3/4"NPT	1	RN60078	<	<
56	NIPPLE, 3/4"NPT X 12"LG.	1	VA13ESA	<	<
57	VALVE, BALL, 3/4"NPT	1	VV540	<	<
58	PIPE PLUG, 3/4"NPT	1	VA01ER	<	<
59	SEPARATOR ELEMENT	1	RN27526	<	<
60	ELBOW-STREET, 3/4"NPT	1	VA08EF	<	<
61	SAFETY VALVE, 3/4"NPT				
	200 PSI (USED ON 150 PSI UNITS)	1	RN42822	<	<
62	NIPPLE, 1/4"NPT	1	VA13BBB	<	<
63	TEE, 1/4"NPT	2	VA10BF	<	<
64	THERMOWELL	1	RN18679	<	RN18680
		1	RN18681 LOT#17	N/A	RN18681 LOT#17-18
65	TUBING, 1/4"OD NYLON, BLACK		VA1626	<	<
66	SCAVENGER COMPRESSION CONNECTOR	1	RN52151	<	<
67	STEEL TUBE, SCAVENGER LINE	1	OFE961	<	<
68	SLEEVE, 1/4"OD, STEEL	2	VAA757	<	<
69	NUT, 1/4"OD, STEEL	2	VAA756	<	<
71	GLASS SIGHT	1	RN52170	<	<
72	EXTENDED BUSHING	1	N/A	N/A	VAA792
73	BONDED SEAL	1	N/A	N/A	VAA789
74	STEEL TUBE, SCAVENGER LINE	1	OFE962	OFE953	OFE986
75	ORIFICE SCAVENGER, COMPRESSION CONNECTOR	1	RN52131-2	RN52136-1	RN52137
76	CHECK VALVE, INLINE, 1/4"NPT	1	VV834	<	<
77	ELBOW MALE, 1/4"NPT X 1/4"NPT, STEEL	1	VAA754	<	<
78	ADAPTER	1	CS854	<	VAA790
78A	SEAL	1	VAA746	<	CS857-2
79	NIPPLE	1	VA24HCA	VA24JEA	<
80	VALVE, MINIMUM PRESSURE	1	RN42128	RN42130	<
80A	SERVICE KIT, MINIMUM PRESSURE VALVE	1	RN42128-1	RN42130-1	<
81	NIPPLE	1	VAD811	VA13JRA	<
82	COUPLING, 90 DEGREE ELBOW	1	RN60216	RN60221	<
83	NIPPLE	1	VAD812	VAD808	VAD807
84	ELBOW	1	VA18JHP	VA06JP	VA08JP
85	NIPPLE, 2" NPT	1	VA24JAA	VA24JEA	N/A
86	U-BOLT, FULL CIRCLE	2	VH2210	VH2211	<
87	BUSHING, 2"NPT X 1 1/2"NPT	1	VA12JHP	N/A	N/A

PARTS LIST FOR AIR AND OIL PIPING GROUP (REF. FIG. 2)

CAP-251

ITEM NO.	DESCRIPTION	QTY.	R/S 60	R/S 75	R/S 100
88	TEE, 1/2" NPT	2	VA10DF	<	<
89	NIPPLE, 1/2"NPT	2	VA13DAB	<	<
90	TEMPERATURE SWITCH, 1/2"NPT		RN18657 (2)	RN18657 (1)	RN18657 (2) LOT#13-16
			RN18657 (1) LOT#17	N/A	RN18657 (1) LOT#17-18
91	TEMPERATURE SWITCH, 1/4"NPT		N/A	RN18659 (1)	N/A
92	TUBING, NYLON, 3/8" OD		VA1628	<	<
93	BUSHING, 1/2"NPT X 1/4"NPT	2	VA12DBQ	<	<
94	NIPPLE, 1/2", SHORT	1	VA13DBB	<	<
95	MODULATING VALVE, 1/4"NPT	1	RN42613	<	<
96	THUMB SCREW, 1/4-28 X 1", PLASTIC KNURLED HEAD	1	CS793	<	<
97	BOLT, M16 X 2.0 X 45mm	8	N/A	N/A	VH1440
98	LOCK WASHER, 16mm	8	N/A	N/A	VH1234
99	WASHER, FLAT, 16mm	8	N/A	N/A	VH1238
*100	ADAPTER, 1/8" BSPP X 37 DEG.FL, 7/16-20	1	N/A	N/A	RN60166-1
*101	SEAL WASHER, 1/8"	1	N/A	N/A	CS857-3
*102	ADAPTER, 3/4" BSPP X 1/4" BSPP	1	N/A	N/A	RN60167
*103	SEAL WASHER, 3/4"	1	N/A	N/A	CS857-1
*104	ADAPTER, 1/4" BSPP X 37 DEG. FL, 7/16-18, ELBOW	1	N/A	N/A	RN60166-3
*105	HOSE ASSEMBLY, 3/16" ID, 7/16-20 X 7/16-20 X 20" LG.	1	N/A	N/A	RN60166
106	HEAVY DUTY FILTER	1	RN24079	<	RN24082
106A	HEAVY DUTY FILTER MAIN ELEMENT	1	RN24079-1	<	RN24082-1
106B	HEAVY DUTY FILTER SAFETY ELEMENT	1	RN24079-2	<	RN24082-2
107	T-BAR CLAMP	2	RN24079-8	<	RN24079-5
108	90 DEGREE ELBOW	1	RN24079-7	<	RN24079-4
109	REDUCER INSERT	1	RN24079-6	<	N/A
110	MOUNTING BAND	1	RN24079-3	<	RN24082-3
111	MOUNTING HARDWARE	1	RN24079-9	<	<
112	BOLT	4	VH1440	<	VH12RN
113	LOCKWASHER	4	VH1234	<	VH35R
114	AIR END	1		SEE TABLE 1	
115	PRESSURE GAUGE	2	RN30323	<	<
116	CONNECTOR, 1/4"OD x 1/4"NPT, MALE, ELBOW	1	RN52150-2	<	<
117	INSERT	2	VA1620	<	<
118	CONNECTOR, 1/4"OD x 1/8"NPT, MALE, ELBOW (NOT SHOWN)	1	RN52150-8	<	<
119	ELBOW-90° STREET-BLACK 1/4"	1	VA08BF	<	<
120	TEE 1/4" 150# M.I. BLACK	2	VA10BF	<	<
121	U-BOLT, FULL CIRCLE	2	VH2210	<	<
122	BRACE, 2" TUBE FLEX JOINT	2	RN10166-1	<	<

NOTE:

1. ALL PARTS ARE FOR COMPRESSORS WITH 125PSI PRESSURE.
2. *PARTS NOT SHOWN ON DRAWING.

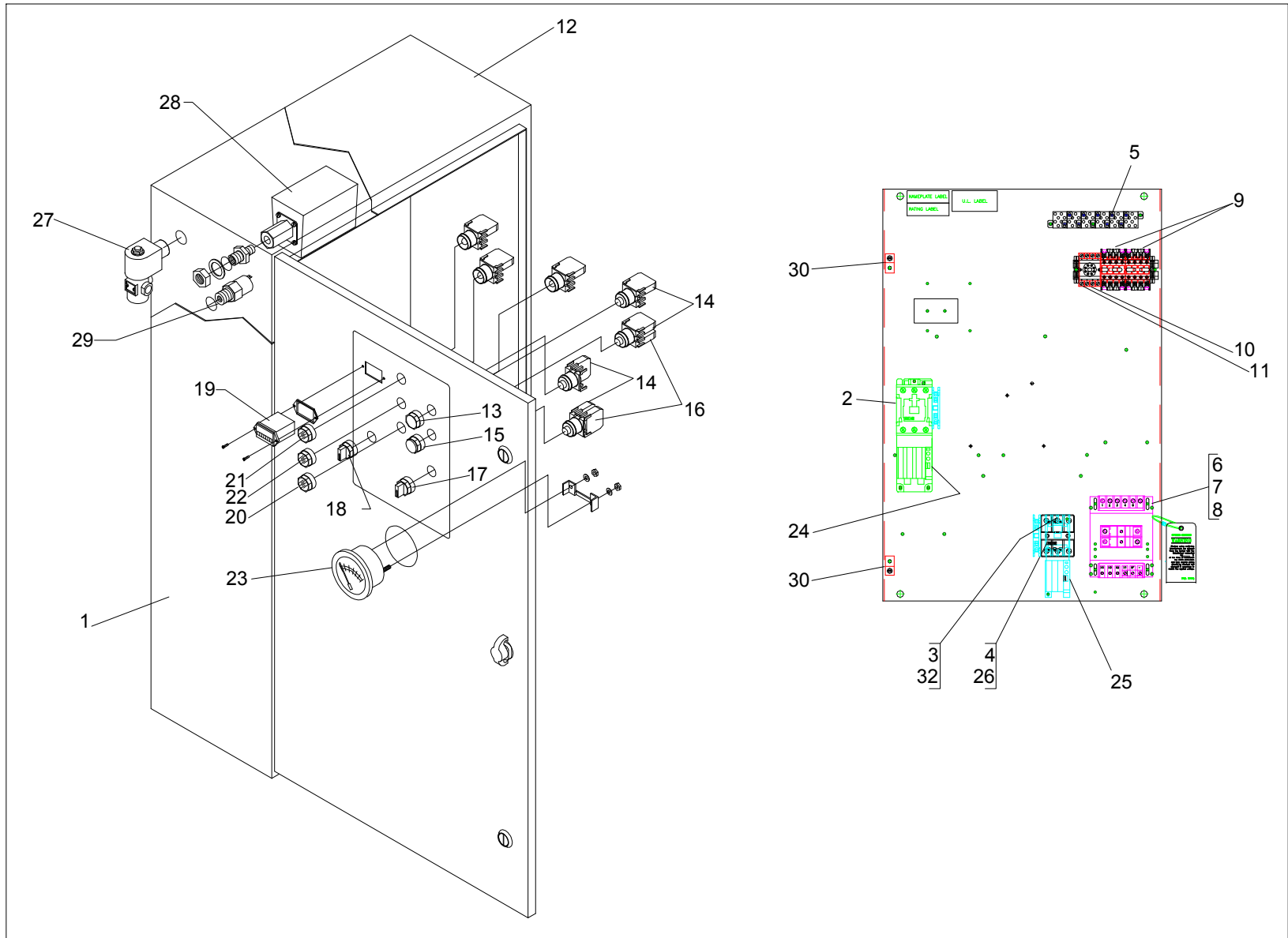


FIGURE 3: ELECTRICAL COMPONENTS GROUP

PARTS LIST FOR ELECTRICAL COMPONENTS GROUP – FVM (REF. FIG. 3)

CAP-251

ITEM NO.	DESCRIPTION	QTY.	R/S 60	R/S 75	R/S 100
1	CONTROL PANEL ASSEMBLY				
2	STARTER WITH INTERCHANGEABLE HEATERS (MAIN) SIZE "S" SIZE "N"		SEE TABLE 2		
3	STARTER SIZE "E" WITH INTERCHANGABLE HEATERS	1	RN18965	<	<
4	FUSE BLOCK - 30A, 600V	1	RN18314-1	<	<
5	TERMINAL BLOCK	26	RN18339	<	<
6	TRANSFORMER, 250VA, FUSED -120V		SEE TABLE 2		
7	FUSE, TRANSFORMER, PRIMARY		SEE TABLE 2		
8	FUSE, TRANSFORMER, SECONDARY		SEE TABLE 2		
9	RELAY, 4 POLE, 120V, DPDT	2	1330062	<	<
*10	SOCKET (OPTIONAL)	1	1330049	<	<
*11	TIMER, 60 MIN., PLUG-IN (OPTIONAL)	1	1330026	<	<
12	ENCLOSURE, 37.5 X 21.5 X 10	1	RN18059	<	<
13	PUSH BUTTON START SWITCH	1	RN18116	<	<
14	N.O. CONTACT BLOCK	4	RN18118-2	<	<
15	PUSH BUTTON STOP SWITCH (RED)	1	RN18118	<	<
16	N.C. CONTACT BLOCK	2	RN18118-1	<	<
*17	2 POSITION SELECTOR SWITCH (CONST/AUTO) (OPTIONAL)	1	RN18104-9	<	<
18	2 POSITION SELECTOR SWITCH (LOAD/UNLOAD)	1	RN18104-7	<	<
19	HOURLMETER	1	1330048	<	<
*20	AMBER LIGHT (STAND BY) (OPTIONAL)	1	RN18218	<	<
21	RED LIGHT (STOP)	1	RN18217	<	<
22	GREEN LIGHT (POWER ON)	1	RN18219	<	<
23	TEMPERATURE GAUGE	1	RN18683	<	<
	TEMPERATURE SWITCH - GAGE	1	RN18672 LOT#17	N/A	RN18672 LOT#17-18
24	HEATER - MAIN		SEE TABLE 2		
25	HEATER - FAN		SEE TABLE 2		
26	FUSE, FAN		SEE TABLE 2		
27	VALVE, SOLENOID	1	RN18422	<	<
28	SWITCH, PRESSURE – 100 PSI UNITS	1	RN18133-2	<	<
	SWITCH, PRESSURE – 125 PSI UNITS	1	RN18133-2	<	<
	SWITCH, PRESSURE – 150 PSI UNITS	1	RN18133-4	<	<
	SWITCH, PRESSURE – 175 PSI UNITS	1	RN18133-4	<	<
29	ANTI-START PRESSURE SWITCH	1	RN18134	<	<
30	LUG, GROUNDING	2	VE779	<	<
31	AUXILIARY CONTACT (WITH TDC OPTION)	1	<	<	<
	WIRING DIAGRAM FOR FVM		610005	<	<

* PARTS FOR OPTIONAL TIME DUAL CONTROL

	ITEM NO	DESCRIPTION	QTY	200 VOLT	230 VOLT	460 VOLT	575 VOLT
R/S 60	1	CONTROL PANEL ASSEMBLY	1	1330099	1330061	1330060	1330060
	2	SIZE "S" STARTER	1	RN18860	RN18860	N/A	N/A
		SIZE "N" STARTER	1	N/A	N/A	RN18963	RN18963
	6	TRANSFORMER, 250VA,FUSED, 120V	1	1330076	1330054	1330054	1330054
	7	FUSE, TRANSFORMER, PRIMARY	2	VE334	VE334	VE334	VE334
	8	FUSE, TRANSFORMER, SECONDARY	1	RN18393	RN18393	RN18393	RN18393
	24	HEATER - MAIN	1	RN18973	RN18972	RN18988	RN18987
	25	HEATER - FAN	1	RN18976	RN18976	RN18974	RN18973
	26	FUSE, FAN	3	RN18317-2	VE399	VE397	RN18316-2
R/S 75	1	CONTROL PANEL ASSEMBLY	1	1330099	1330061	1330060	1330060
	2	SIZE "S" STARTER	1	RN18860	RN18860	N/A	N/A
		SIZE "N" STARTER	1	N/A	N/A	RN18963	RN18963
	6	TRANSFORMER, 250VA,FUSED, 120V	1	1330076	1330054	1330054	1330054
	7	FUSE, TRANSFORMER, PRIMARY	2	VE334	VE334	VE334	VE334
	8	FUSE, TRANSFORMER, SECONDARY	1	RN18393	RN18393	RN18393	RN18393
	24	HEATER - MAIN	1	RN18974	RN18973	RN18989	RN18988
	25	HEATER - FAN	1	RN18978	RN18977	RN18975	RN18975
	26	FUSE, FAN	3	RN18318-1	RN18318	VE399	VE398
R/S 100	1	CONTROL PANEL ASSEMBLY	1	N/A	1330061	1330060	1330060
	2	SIZE "S" STARTER	1	N/A	RN18860	N/A	N/A
		SIZE "N" STARTER	1	N/A	N/A	RN18963	RN18963
	6	TRANSFORMER, 250VA,FUSED, 120V	1	N/A	1330054	1330054	1330054
	7	FUSE, TRANSFORMER, PRIMARY	2	N/A	VE334	VE334	VE334
	8	FUSE, TRANSFORMER, SECONDARY	1	N/A	RN18393	RN18393	RN18393
	24	HEATER - MAIN	1	N/A	RN18974	RN18990	RN18989
	25	HEATER - FAN	1	N/A	RN18977	RN18975	RN18975
	26	FUSE, FAN	3	N/A	RN18318	VE399	VE398

TABLE 2: CONTROL PANEL, STARTERS, HEATERS AND FUSES - FVM

NOTES

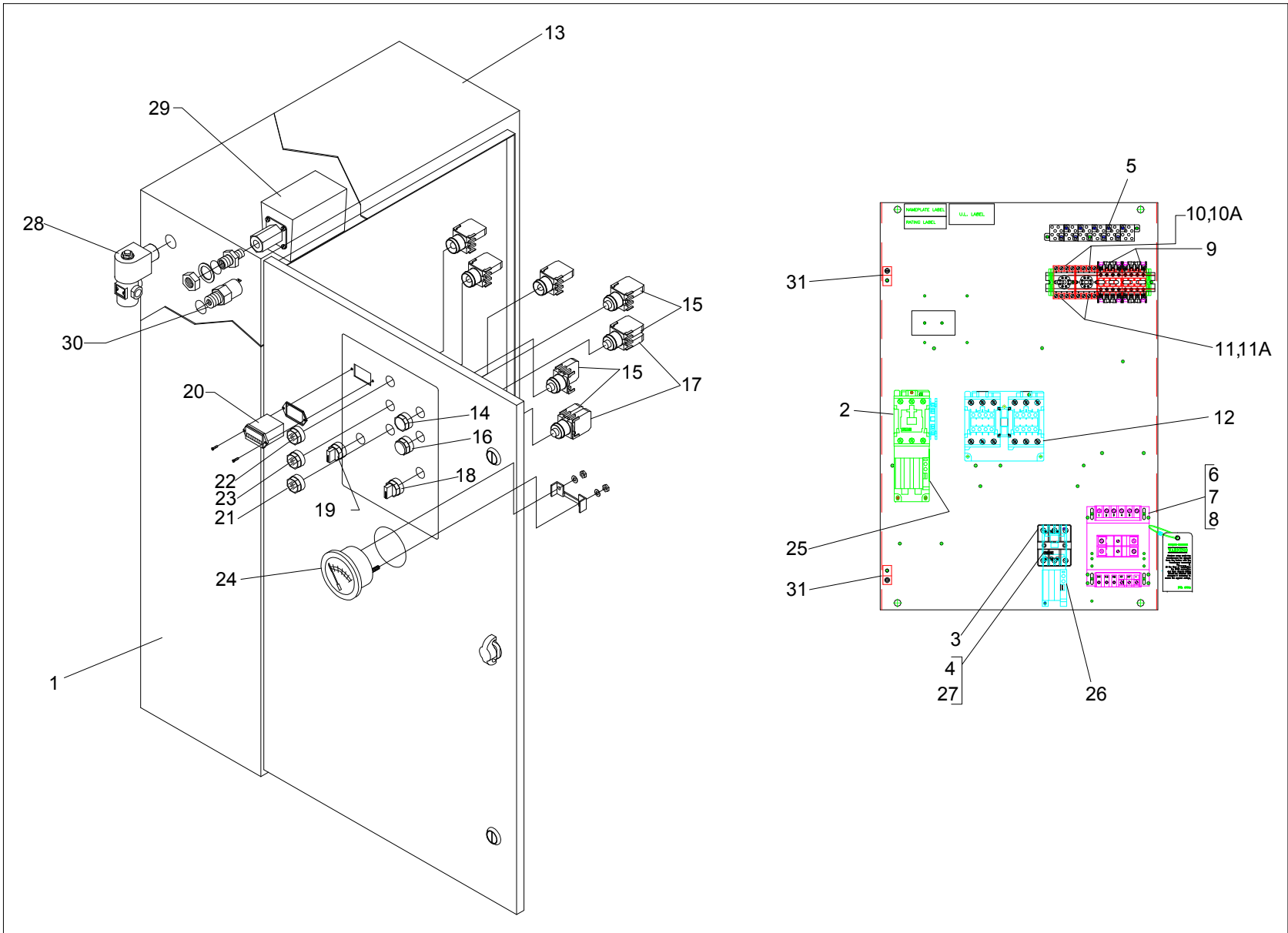


FIGURE 4: ELECTRICAL COMPONENTS GROUP-Y-DELTA

PARTS LIST FOR ELECTRICAL COMPONENTS GROUP – Y-DELTA (REF. FIG. 4) CAP-251

ITEM NO.	DESCRIPTION	QTY.	R/S 60	R/S 75	R/S 100
1	CONTROL PANEL ASSEMBLY				
2	STARTER WITH INTERCHANGEABLE HEATERS (MAIN) SIZE "P" SIZE "N" SIZE "K"		SEE TABLE 3		
3	STARTER SIZE "E" WITH INTERCHANGABLE HEATERS	1	RN18965	<	<
4	FUSE BLOCK - 30A, 600V	1	RN18314-1	<	<
5	TERMINAL BLOCK	26	RN18339	<	<
6	TRANSFOMER, 250VA,FUSED -120V				
7	FUSE, TRANSFORMER, PRIMARY				
8	FUSE, TRANSFORMER, SECONDARY				
9	RELAY, 4 POLE, 120V, DPDT	2	1330062	<	<
10	SOCKET	1	1330049	<	<
*10A	SOCKET (OPTIONAL)	1	1330049	<	<
11	TIMER, 30 SEC., PLUG-IN	1	1330031	<	<
*11A	TIMER, 60 MIN., PLUG-IN (OPTIONAL)	1	1330026	<	<
12	CONTACTOR REV. M1-S/M1-S WITH NO/NC				
13	ENCLOSURE, 37.5 X 21.5 X 10	1	RN18059	<	<
14	PUSH BUTTON START SWITCH	1	RN18116	<	<
15	N.O. CONTACT BLOCK	4	RN18118-2	<	<
16	PUSH BUTTON STOP SWITCH (RED)	1	RN18118	<	<
17	N.C. CONTACT BLOCK	2	RN18118-1	<	<
*18	2 POSITION SELECTOR SWITCH (CONST/AUTO) (OPTIONAL)	1	RN18104-9	<	<
19	2 POSITION SELECTOR SWITCH (LOAD/UNLOAD)	1	RN18104-7	<	<
20	HOURMETER	1	1330048	<	<
*21	AMBER LIGHT (STAND BY) (OPTIONAL)	1	RN18218	<	<
22	RED LIGHT (STOP)	1	RN18217	<	<
23	GREEN LIGHT (POWER ON)	1	RN18219	<	<
24	TEMPERATURE GAUGE	1	RN18683	<	<
	TEMPERATURE SWITCH - GAUGE	1	RN18672 LOT#17	N/A	RN18672 LOT#17-18
25	HEATER - MAIN				
26	HEATER - FAN				
27	FUSE, FAN				
28	VALVE, SOLENOID	1	RN18422	<	<
29	SWITCH, PRESSURE – 100 PSI UNITS	1	RN18133-2	<	<
	SWITCH, PRESSURE – 125 PSI UNITS	1	RN18133-2	<	<
	SWITCH, PRESSURE – 150 PSI UNITS	1	RN18133-4	<	<
	SWITCH, PRESSURE – 175 PSI UNITS	1	RN18133-4	<	<
30	ANTI-START PRESSURE SWITCH	1	RN18134	<	<
31	LUG, GROUNDING	2	VE779	<	<
	WIRING DIAGRAM FOR Y-DELTA		CAB1665A	<	<

* PARTS FOR OPTIONAL TIME DUAL CONTROL

	ITEM NO	DESCRIPTION	QTY	200 VOLT	230 VOLT	460 VOLT	575 VOLT
R/S 60	1	CONTROL PANEL ASSEMBLY	1	1330101	1330069	1330068	1330068
	2	SIZE "N" STARTER	1	RN18963	RN18963	N/A	N/A
		SIZE "K" STARTER	1	N/A	N/A	RN18960	RN18960
	12	CONTACTOR REV. M1-S/M1-S WITH NO/NC	1	RN18540	RN18540	RN18536	RN18536
	6	TRANSFORMER, 250VA,FUSED, 120V	1	1330076	1330054	1330054	1330054
	7	FUSE, TRANSFORMER, PRIMARY	2	VE334	VE334	VE334	VE334
	8	FUSE, TRANSFORMER, SECONDARY	1	RN18393	RN18393	RN18393	RN18393
	24	HEATER - MAIN	1	RN18989	RN18988	RN18982	RN18981
	25	HEATER - FAN	1	RN18976	RN18976	RN18974	RN18973
	26	FUSE, FAN	3	RN18317-2	VE399	VE397	RN18316-2
R/S 75	1	CONTROL PANEL ASSEMBLY	1	1330101	1330069	1330068	1330068
	2	SIZE "N" STARTER	1	RN18963	RN18963	N/A	N/A
		SIZE "K" STARTER	1	N/A	N/A	RN18960	RN18960
	12	CONTACTOR REV. M1-S/M1-S WITH NO/NC	1	RN18540	RN18540	RN18536	RN18536
	6	TRANSFORMER, 250VA,FUSED, 120V	1	1330076	1330054	1330054	1330054
	7	FUSE, TRANSFORMER, PRIMARY	2	VE334	VE334	VE334	VE334
	8	FUSE, TRANSFORMER, SECONDARY	1	RN18393	RN18393	RN18393	RN18393
	24	HEATER - MAIN	1	RN18990	RN18989	RN18982	RN18982
	25	HEATER - FAN	1	RN18978	RN18977	RN18975	RN18975
	26	FUSE, FAN	3	RN18318-1	RN18318	VE399	VE398
R/S 100	1	CONTROL PANEL ASSEMBLY	1	1330070	1330070	1330068	1330068
	2	SIZE "P" STARTER	1	RN18967	RN18967	N/A	N/A
		SIZE "K" STARTER	1	N/A	N/A	RN18960	RN18960
	12	CONTACTOR REV. M1-S/M1-S WITH NO/NC	1	N/A	N/A	RN18536	RN18536
		CONTACTOR "P"	1	RN18931-A	RN18931-A	N/A	N/A
		CONTACTOR "N"	1	RN18930-A	RN18930-A	N/A	N/A
	6	TRANSFORMER, 250VA,FUSED, 120V	1	N/A	N/A	1330054	1330054
	6	TRANSFORMER, 350VA, FUSED, 120V	1	1330077	1330077	N/A	N/A
	7	FUSE, TRANSFORMER, PRIMARY	2	VE334	VE334	VE334	VE334
	8	FUSE, TRANSFORMER, SECONDARY	1	RN18393	RN18393	RN18393	RN18393
	24	HEATER - MAIN	1	RN18973	RN18972	RN18983	RN18983
25	HEATER - FAN	1	RN18978	RN18977	RN18975	RN18975	
	26	FUSE, FAN	3	RN18318-1	RN18318	VE399	VE398

Table 3: CONTROL PANEL, STARTERS, HEATERS AND FUSES – Y-DELTA

NOTES

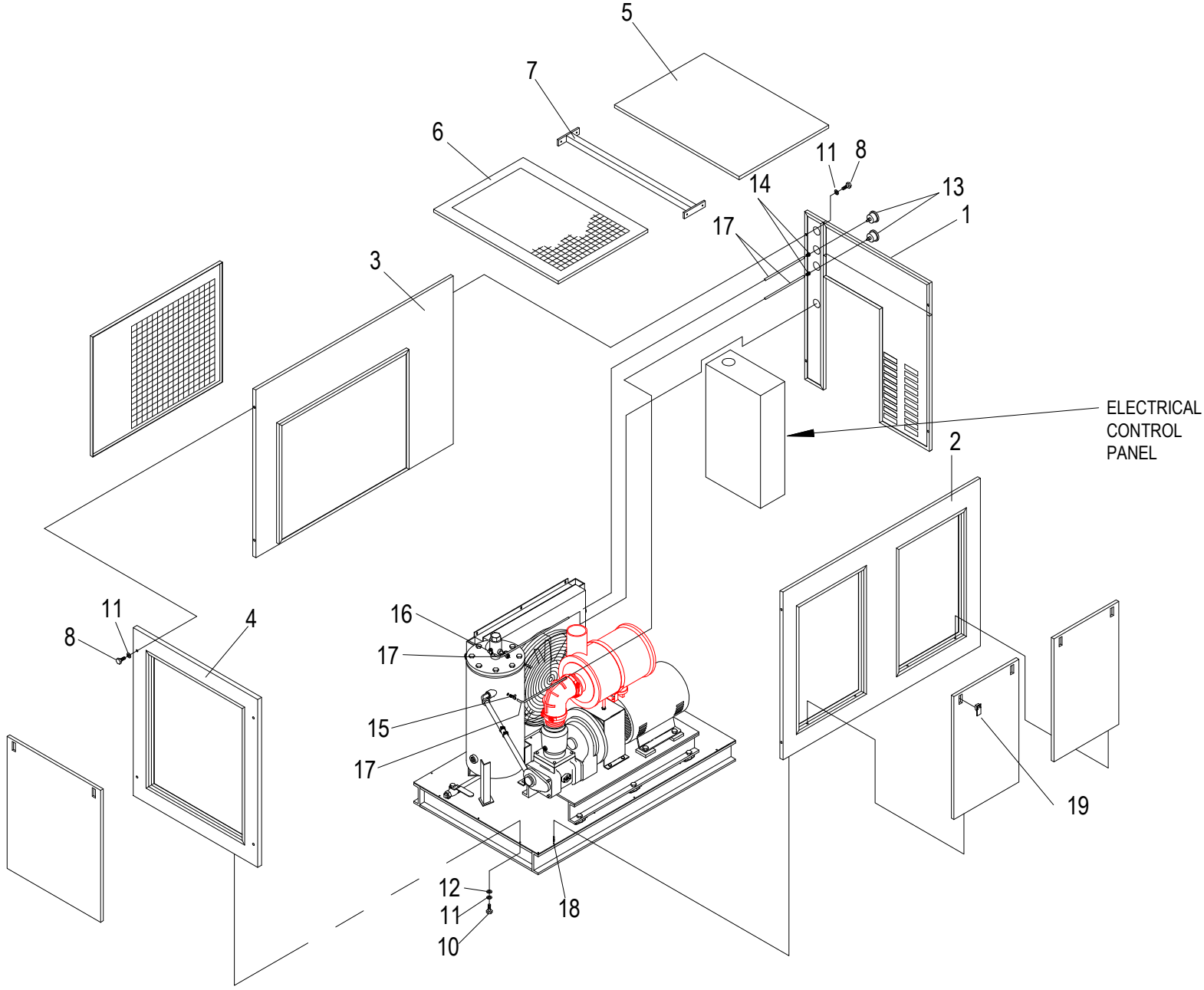


FIGURE 5: ENCLOSURE GROUP

PARTS LIST FOR ENCLOSURE GROUP (REF. FIG. 5)

CAP-251

ITEM NO.	DESCRIPTION	QTY.	R/S 60	R/S 75	R/S 100
1	FRONT PANEL ASSEMBLY	1	RN10045-16	RN10050-19	<
2	LEFT SIDE PANEL ASSEMBLY	1	RN10045-11	RN10050-12	<
3	RIGHT SIDE PANEL ASSEMBLY	1	RN10045-13	RN10050-13	RN10050-14
4	REAR PANEL ASSEMBLY	1	RN10045-10	RN10050-11	<
5	TOP PANEL (FRONT) ASSEMBLY	1	RN10045-14	RN10050-15	<
6	TOP PANEL (BACK) ASSEMBLY	1	RN10045-15	RN10050-16	<
7	TOP CROSS SUPPORT, 52" X 2"	1	RN10045-8	RN10050-08	<
8	SCREW, SOCKET HEAD CAP, BUTTON HEAD, 1/4-20 x 1 1/2" LG.	8	VH1737	<	<
9	SCREW, HEX HEAD CAP, 1/4-20 x 1/2" LG. (NOT SHOWN)	6	VH12FF	<	<
10	SCREW, HEX HEAD CAP, 1/4-20 x 1" LG.	4	VH12FH	<	<
11	LOCKWASHER - 1/4"	16	VH35F	<	<
12	WASHER, FLAT - 1/4"	16	VH32F	<	<
13	GAUGE, AIR PRESSURE, 2 1/2" DIA.	2	RN30322	<	<
14	CONNECTOR, STRAIGHT, OD, 1/4" NPTF x 1/4" OD TUBE	2	VAA730	<	<
15	RUN-TEE, OD, 1/4" NPT x 1/4" OD TUBE	1	VAB746	<	<
16	CONNECTOR, ELBOW, OD, 1/4" NPT x 1/4" OD TUBE	1	VAA703	<	<
17	TUBE, NYLON, BLACK, #11	-	VA1626	<	<
18	PIN	6	CS910	<	<
19	LATCH	8	CS914	<	<
*20	SOUND REDUCTION KIT (OPTIONAL)	1	CY48-5-41	CY48-7-41	<
*21	VENT COVER FRONT PANEL, FOAM ASSEMBLY (OPTIONAL)	1	RN10045-B1A	RN10050-B1A	<
*22	VENT COVER COOLER SIDE, FOAM ASSEMBLY (OPTIONAL)	1	RN10045-BA	RN10050-BA	<
*23	VENT COVER TOP PANEL (REAR), FOAM ASSEMBLY (OPTIONAL)	1	RN10045-B2A	RN10050-A2A	<
*24	HEX HEAD CAP SCREW, 1/4-20 X 3/4" (OPTIONAL)	23	VH12FF	<	<
*25	WASHER, FLAT, 1/4" (OPTIONAL)	23	VH32F	<	<
*26	LOCKWASHER, 1/4" (OPTIONAL)	23	VH35F1	<	<

* PARTS NOT SHOWN ON DRAWING

ROUTINE MAINTENANCE KITS

4,000 HOUR KIT (FOR UNITS WITH HEAVY DUTY INLET FILTER)

MODEL	WORKING PRESSURE			
	100 PSI	125 PSI	150 PSI	175 PSI
R/S 60	VGC543	<	<	<
R/S 75	VGC543	<	<	<
R/S 100	VGC544	<	<	<

KIT INCLUDES:

- (1) SEPARATOR ELEMENT
- (4) OIL FILTER ELEMENT
- (2) HD MAIN ELEMENT
- (2) HD SAFETY ELEMENT

8,000 HOUR KIT (FOR UNITS WITH HEAVY DUTY INLET FILTER)

MODEL	WORKING PRESSURE			
	100 PSI	125 PSI	150 PSI	175 PSI
R/S 60	VGf540	<	<	<
R/S 75	VGf540	<	<	<
R/S 100	VGf544	<	<	<

KIT INCLUDES:

- (2) SEPARATOR ELEMENT
- (8) OIL FILTER ELEMENT
- (4) HD MAIN ELEMENT
- (4) HD SAFETY ELEMENT

12,000 HOUR KIT (FOR UNITS WITH HEAVY DUTY INLET FILTER)

MODEL	WORKING PRESSURE			
	100 PSI	125 PSI	150 PSI	175 PSI
R/S 60	VGf569	<	<	<
R/S 75	VGf570	<	<	<
R/S 100	VGf571	<	<	<

KIT INCLUDES:

- (3) SEPARATOR ELEMENT
- (12) OIL FILTER ELEMENT
- (6) HD MAIN ELEMENT
- (6) HD SAFETY ELEMENT
- (1) INLET VALVE KIT
- (1) THERMO BY-PASS VALVE KIT
- (1) MINIMUM PRESSURE VALVE KIT
- (1) COUPLING SLEEVE

NOTES

NOTES

CURTIS – TOLEDO, INC.

1905 KIENLEN AVE., ST. LOUIS, MO 63133
TEL. (314) 383-1300 FAX (314) 381-1439
E-MAIL: info@curtistoledo.com
WEBSITE: www.curtistoledo.com