

CURTIS

R/S 15A thru R/S 30A

AIR END MODEL

B101
AIR COOLED

LOT NUMBER:

R/S 15A	01	25A	01
R/S 20A	01	30A	18,19

HOW TO ORDER PARTS

Give name and part number as shown in parts list and serial number. Serial number is on nameplate attached to control panel of unit.

IMPORTANT

Make a permanent record of the Model and Serial numbers of your machine here. You'll save time and expense by including this reference identification on replacement parts

MODEL : _____

SER. NO.: _____

PARTS LIST

CURTIS-TOLEDO, INC.

1905 KIENLEN AVENUE, ST. LOUIS, MISSOURI 63133

Tel. (314) 383-1300

Fax (314) 381-1439

E-MAIL: info@curtistoledo.com

 **DANGER**

Air used for breathing or food processing must meet
OSHA 29CFR 1910.134 or FDA 21CFR 178.3570
Regulations. Failure to do so may cause severe
injury or death

INTRODUCTION

HOW TO USE THE PARTS LIST

Using the List of Illustrations obtain the figure number of the assembly in which your part is located. Go to the appropriate figure and locate your part on the illustration. Using the key number, find the part on the parts list.

LIST OF ILLUSTRATIONS

<u>Title</u>	<u>Page</u>
Major Components Group	2
Air And Oil Piping Group	6
Electrical Components Group (Open)	10
Electrical Components Group (Enclosed)	12
Tank and Base Group	16
Enclosure Group	20
Routine Maintenance Kits	22



WARNING

Personal injury and/or equipment damage will result by failing to pay attention to the vital safety information and instruction in the operating and instruction manual. Carefully read, understand, and retain all safety information and instructions before operating this unit.

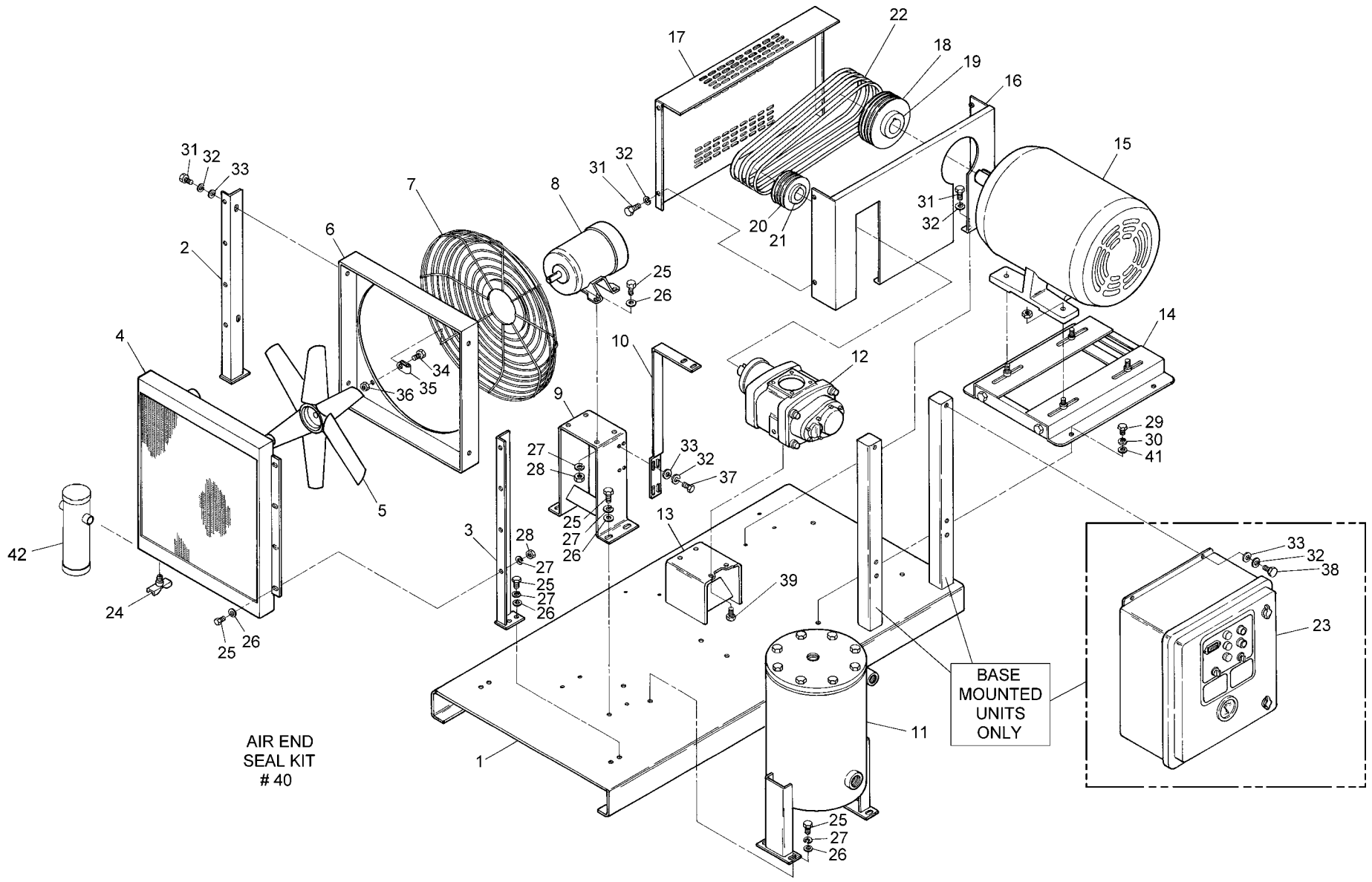


Figure 1: Major Components Group

PARTS LIST FOR MAJOR PARTS GROUP (REF. FIG. 1)

CAP-244

ITEM NO.	DESCRIPTION	QTY.	R/S 15A	R/S 20A	R/S 25A	R/S 30A	R/S 30A LOT#19	
1	MAIN BASE ASSEMBLY (BASE RN10114, RN10114-1)	1	RN10114-11	<	RN10114-10	<	<	
2	COOLER SUPPORT ASSEMBLY, L.H.	1	CS693	<	<	<	<	
3	COOLER SUPPORT ASSEMBLY, R.H.	1	CS694	<	<	<	<	
4	COOLER, AIR/OIL	1	RN32201	<	<	<	<	
5	BLADE, FAN	1	RN32405-3	RN32405	<	<	<	
6	COVER, FAN	1	RN10455-2	<	<	<	<	
7	GUARD, FAN	1	RN10455	<	<	<	<	
*8	MOTOR, 1/2HP, FAN, 3 PHASE, 60 Hz, 200V, ODP	1	1310028	<	<	RN19004-7	VM312	
	MOTOR, 1/2HP, FAN, 3 PHASE, 60 Hz, 230/460V, ODP		1310027	<	<	RN19004	VM312	
	MOTOR, 1/2HP, FAN, 3 PHASE, 60 Hz, 575V, ODP		1310029	<	<	RN19004-5	VM318	
9	MOUNT, FAN MOTOR	1	CS690	<	<	<	<	
10	BRACKET, OIL FILTER	1	CS716	<	<	<	<	
11	SEPARATOR, OIL/AIR	1	RN10214-2	<	<	<	<	
12	AIR END	1	CS642	<	<	<	<	
13	MOUNTING PLATE, AIR END	1	RN10147	<	<	<	<	
14	BASE, MOTOR	1	RN12015	<	RN12025	<	<	
*15	MOTOR, MAIN, 3 PHASE, 60 Hz, 200V, ODP	1	VM1205	M40	1310060	RN19031-7	<	
	MOTOR, MAIN, 3 PHASE, 60 Hz, 230/460V, ODP	1	M37	M39	1310061	RN19031	<	
	MOTOR, MAIN, 3 PHASE, 60 Hz, 575V, ODP	1	VM1211	VM1310	1310062	RN19031-5	<	
16	BELTGUARD, BACK	1	CS920	<	RN10510-8	<	<	
17	BELTGUARD, FRONT	1	RN10518	<	RN10510-2	<	<	
18	SHEAVE, MOTOR	SEE TABLE 1						
19	BUSHING, MOTOR							
20	SHEAVE, AIR END							
21	BUSHING, AIR END							
22	BELT							
23	PANEL, CONTROL	SEE TABLE 2						
24	DRAINCOCK	1	VV514	<	<	<	<	
25	SCREW, HEX HEAD CAP, 5/16-18 x 3/4" LG.	28	VH12HF	<	<	<	<	
26	WASHER, FLAT - 5/16"	28	VH32H	<	<	<	<	
27	LOCKWASHER - 5/16"	28	VH35H	<	<	<	<	
28	NUT, HEX - 5/16"	12	VH15H	<	<	<	<	
29	SCREW, HEX HEAD CAP, 1/2-13 x 1" LG.	4	VH11PH	<	<	<	<	
30	LOCKWASHER - 1/2"	4	VH35P	<	<	<	<	
31	SCREW, HEX WASHER HEAD, 1/4-20 x 3/4" LG.	18	VH12FF	<	<	<	<	
32	LOCKWASHER - 1/4"	18	VH35F1	<	<	<	<	
33	WASHER, FLAT - 1/4"	8	VH32F	<	<	<	<	
34	SCREW, HEX HEAD CAP, 10-24 x 1/2" LG.	4	VH11DD	<	<	<	<	
35	NYLON LOOP CLAMP	4	RN10455-1	<	<	<	<	
36	NUT, HEX, 10-24	4	4440	<	<	<	<	
37	SCREW, HEX HEAD CAP, 1/4-20 x 1" LG.	2	VH12FH	<	<	<	<	
38	SCREW, HEX HEAD CAP, 1/4-20 x 7/8" LG.	4	VH12FG	<	<	<	<	
39	BOLT	4	VH1665	<	<	<	<	
40	AIR END SEAL KIT	1	RN90435-1	<	<	<	<	
41	WASHER, FLAT - 1/2"	1	VH32P	<	<	<	<	
42	MOISTURE SEPARATOR, BASE MOUNTED UNIT	1	RN34122	<	<	<	<	
43	LOCKWASHER, 12mm (NOT SHOWN)	4	VH1240	<	<	<	<	
44	PLUG, 1/8 BSPP (NOT SHOWN)	3	RN10610	<	<	<	<	
45	PLUG, 1/4 BSPP (NOT SHOWN)	1	RN10612	<	<	<	<	

* FOR MOTOR PART NUMBERS OTHER THAN STANDARD ODP, CONSULT FACTORY

	ITEM NO	DESCRIPTION	R/S 15A		R/S 20A		R/S 25A		R/S 30A	
			QTY	PART NO.	QTY	PART NO.	QTY	PART NO.	QTY	PART NO.
100 PSI	18	SHEAVE, MOTOR	1	1350005	1	1350046	1	1350062	1	RN14109
	19	BUSHING, MOTOR	1	1350039	1	1350039	1	1350039	1	RN14177-4
	20	SHEAVE, AIR END	1	1350042	1	1350008	1	1350028	1	1350028
	21	BUSHING, AIR END	1	1350012	1	1350012	1	1350012	1	1350012
	22	BELT	2	RN14311-1	3	RN14310-1	4	RN14311-1	4	RN14307-1
125 PSI	18	SHEAVE, MOTOR	1	1350005	1	1350046	1	1350062	1	RN14109
	19	BUSHING, MOTOR	1	1350039	1	1350039	1	1350039	1	RN14177-4
	20	SHEAVE, AIR END	1	1350044	1	1350026	1	RN14118	1	RN14104
	21	BUSHING, AIR END	1	1350012	1	1350012	1	1350012	1	RN14175-1
	22	BELT	2	RN14311-1	3	RN14310-1	4	RN14311-1	4	RN14307-1
150 PSI	18	SHEAVE, MOTOR	1	1350005	1	1350046	1	1350062	1	RN14110
	19	BUSHING, MOTOR	1	1350039	1	1350039	1	1350039	1	RN14177-4
	20	SHEAVE, AIR END	1	1350004	1	1350010	1	RN14118	1	RN14107
	21	BUSHING, AIR END	1	1350012	1	1350012	1	1350012	1	RN14176-1
	22	BELT	2	RN14315-1	3	RN14311-1	4	RN14311-1	4	RN14307-1
175 PSI	18	SHEAVE, MOTOR	1	1350045	1	1350046	1	1350062	1	RN14110
	19	BUSHING, MOTOR	1	1350039	1	1350039	1	1350039	1	RN14177-4
	20	SHEAVE, AIR END	1	1350042	1	1350025	1	RN14119	1	RN14101
	21	BUSHING, AIR END	1	1350012	1	1350012	1	1350012	1	RN14176-1
	22	BELT	2	RN14310-1	3	RN14311-1	4	RN14311-1	4	RN14308-1

Table 1: SHEAVES, BUSHING AND BELTS

	DESCRIPTION	R/S 15A	R/S 20A	R/S 25A	R/S 30A
OPEN	200V PANEL	1330000	<	1330001	1330001
	230V PANEL	1330000	<	1330001	1330001
	460V PANEL	1330000	<	1330000	1330000
	575V PANEL	1330078	<	1330078	1330078
ENCLOSED	200V PANEL	1330039 + 320012	<	1330040 + 320012	1330040 + 320012
	230V PANEL	1330039 + 320012	<	1330040 + 320012	1330040 + 320012
	460V PANEL	1330039 + 320012	<	1330039 + 320012	1330039 + 320012
	575V PANEL	1330080 + 320012	<	1330080 + 320012	1330080 + 320012

Table 2: CONTROL PANELS

NOTES

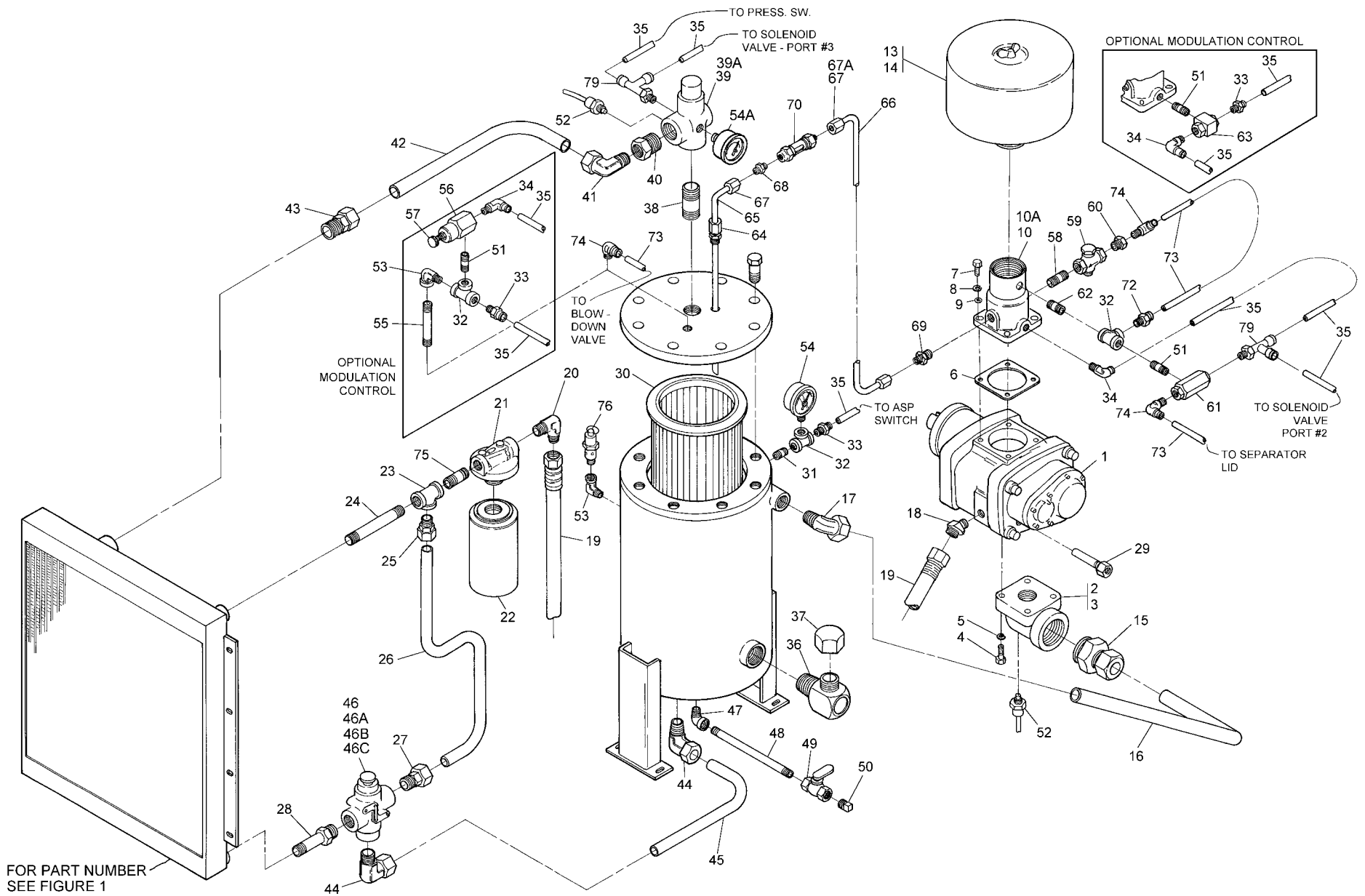


Figure 2: Air And Oil Piping Group

PARTS LIST FOR AIR AND OIL PIPING GROUP (REF. FIG. 2)

CAP-244

ITEM NO.	DESCRIPTION	QTY.	R/S 15A	R/S 20A	R/S 25A	R/S 30A
1	AIR END	1	CS642	<	<	<
2	FLANGE, DISCHARGE	1	RN10679-2	<	<	<
3	“O” RING #222 (NOT SHOWN)	1	RN10670-1	<	<	<
4	BOLT, M12 x 1.75 x 60mm	4	VH1442	<	<	<
5	LOCKWASHER, 12mm	4	VH1240	<	<	<
6	GASKET, INLET VALVE	1	RN24569-1	<	<	<
7	BOLT, M8 x 1.25 x 25mm	4	VH1667	<	<	<
8	LOCKWASHER	4	VH35H	<	<	<
9	WASHER	4	VH32H	<	<	<
10	ASSEMBLY, VALVE W/ COUPLING	1	320015	<	<	<
10A	KIT, SERVICE, INLET VALVE (NOT SHOWN)	1	RN24569-2	<	<	<
13	ASSEMBLY, AIR FILTER	1	RN24020	<	<	<
14	ELEMENT, AIR FILTER	1	VA1129	<	<	<
15	CONNECTOR, 1” OD x SAE 16, STRAIGHT	1	VAB705	<	<	<
16	TUBE, 1” OD	1	OFE984	<	<	<
17	FITTING SET, 1” OD x SAE 20, ELBOW	1	RN52180	<	<	<
18	CONNECTOR, 3/4” OD x 1/2” NPT	1	RN60096	<	<	<
19	ASSEMBLY, HOSE - 5/8” ID x 37” LG.	1	RN60097	<	<	<
20	CONNECTOR, 3/4” OD x 3/4” NPT, ELBOW	1	RN60084	<	<	<
21	OIL FILTER HEAD	1	RN28100	<	<	<
22	ELEMENT, OIL FILTER	1	RN28201	<	<	<
23	TEE - 3/4” NPT	1	VA10EF	<	<	<
24	NIPPLE, 3/4” NPT X 4 1/2” LG.	1	VA13EHA	<	<	<
25	CONNECTOR, STRAIGHT, 3/4” NPT x 3/4” OD	1	VAA717	<	<	<
26	TUBE, BY-PASS TO OIL FILTER	1	OFE958	<	<	<
27	CONNECTOR, STRAIGHT, 1 1/16-12 UN x 3/4” OD	1	RN52143	<	<	<
28	ADAPTOR, MALE - 3/4” OD x 1 1/16-12 UN	1	RN52139	<	<	<
29	THERMOWELL, M14 x 1.5	1	RN18679	<	<	<
30	ELEMENT, SEPARATOR	1	RN27542	<	<	<
31	NIPPLE, 1/4 “ x SHORT	1	VA13BBB	<	<	<
32	TEE - 1/4”	3	VA10BF	<	<	<
33	CONNECTOR, STRAIGHT, QUICK DISCONNECT	4	VAA702	<	<	<
34	CONNECTOR, ELBOW, QUICK DISCONNECT	3	VAA703	<	<	<
35	TUBE, NYLON, BLACK, #11	-	VA1626	<	<	<
36	COMBINATION OIL FILL AND SIGHT GLASS	1	RN52171	<	<	<
37	CAP W/ VENT HOLE	1	CS741	<	<	<
38	NIPPLE, 1 1/4” NPT x 2 1/2” LG.	1	VA017	<	<	<
39	VALVE, MINIMUM PRESSURE	1	RN42126-4	<	<	<
39A	KIT, SERVICE, MINIMUM PRESSURE VALVE (NOT SHOWN)	1	RN42126-1	<	<	<
40	BUSHING, 1 1/4” NPT x 1” NPT	1	VA12GFF	<	<	<
41	CONNECTOR, 1” NPT x 1” OD., ELBOW	1	VAA716	<	<	<
42	TUBE, 1” OD	1	OFE956	<	<	<
43	CONNECTOR, 1” NPT x 1” OD., STRAIGHT	1	VAA715	<	<	<
44	CONNECTOR, ELBOW, 3/4” OD x 1 1/16-12 UN	2	RN52141	<	<	<
45	TUBE, SEPARATOR TANK TO BY-PASS	1	OFE957	<	<	<
46	VALVE, THERMO BY-PASS, 170° F	1	RN42403	<	<	<
46A	KIT, SERVICE, THERMO BY-PASS VAVLE, 170° F	1	RN42403-1	<	<	<
ITEM NO.	DESCRIPTION	QTY.	R/S 15A	R/S 20A	R/S 25A	R/S 30A

PARTS LIST FOR AIR AND OIL PIPING GROUP (REF. FIG. 2)

CAP-244

46B	VALVE, THERMO BY-PASS, 180° F (OPTIONAL)	1	RN42402	<	<	<
46C	KIT, SERVICE, THERMO BY-PASS VALVE, 180° F (OPTIONAL)	1	RN42402-1	<	<	<
47	ELBOW, STREET - 1/2" NPT	1	VA08DP	<	<	<
48	NIPPLE - 1/2" x 9 1/2" LG.	1	VA900	<	<	<
49	VALVE, BALL - 1/2"	1	VV538	<	<	<
50	PIPE PLUG - 1/2" NPT	1	VA01DR	<	<	<
51	NIPPLE - 1/4" x CLOSE	4	VA13BAA	<	<	<
52	SWITCH, TEMPERATURE	2	RN18659	<	<	<
53	ELBOW, STREET - 1/4"	2	VA08BF	<	<	<
54	AIR GAUGE, 2 1/2" DIA., LIQUID FILLED	1	RN30323	<	<	<
54A	AIR GAUGE, 2 1/2" DIA., LIQUID FILLED	1	RN30322	<	<	<
55	NIPPLE, 1/4" x 4" LG.	1	VA13BGA	<	<	<
56	VALVE, MODULATING - 1/4"	1	RN42613	<	<	<
57	THUMB SCREW	1	CS793	<	<	<
58	NIPPLE, 3/8" x CLOSE	1	VA13CAB	<	<	<
59	VALVE, CHECK - 3/8"	1	VV832	<	<	<
60	BUSHING, 3/8" x 1/4"	1	VA12CBA	<	<	<
61	VALVE, BLOW DOWN - 1/4"	1	RN18428	<	<	<
62	NIPPLE, 1/4" NPT x CLOSE	1	VA13BAA	<	<	<
63	VALVE, SHUTTLE - 1/4"	1	RN42105	<	<	<
64	COMPRESSION CONNECTOR, 1/4" NPT x 1/4" OD, STRAIGHT	1	RN52151	<	<	<
65	STEEL TUBE, 1/4" OD	1	OFE965A	<	<	<
66	STEEL TUBE, 1/4" OD	1	OFE967	<	<	<
67	NUT, 1/4" OD, STEEL	2	VAA756	<	<	<
67A	SLEEVE, 1/4" OD	2	VAA757	<	<	<
68	UNION	1	VAA701	<	<	<
69	ORIFICE SCAVENGER ASSEMBLY	1	RN52131-2	<	<	<
70	SIGHT GLASS	1	RN52170	<	<	<
71	SEPARATOR TANK CROSS (NOT SHOWN)	1	RN10140	<	<	<
72	CONNECTOR, STRAIGHT, QUICK DISCONNECT	1	VAA702	<	<	<
73	TUBE, NYLON, BLACK, #11	-	VA1626	<	<	<
74	CONNECTOR, ELBOW, QUICK DISCONNECT	3	VAA703	<	<	<
75	NIPPLE, 3/4" NPT x SHORT	1	VA13ECA	<	<	<
76	VALVE, RELIEF - 1/4"	1				
	150 PSI (USED ON 100 PSI AND 125 PSI UNITS)		VV406	<	<	RN42810-1
	175 PSI (USED ON 150 PSI UNITS)		RN42811	<	<	<
	200 PSI (USED ON 175 PSI UNITS)		RN42812	<	<	<
79	TEE, RUN - 1/4" NPT x 1/4" OD TUBE x 1/4" OD TUBE	2	VAB746	<	<	<
80	PRESSURE REGULATOR FOR 175PSI UNITS (NOT SHOWN)	1	CY58-1	<	<	<

NOTES

PARTS LIST FOR ELECTRICAL COMPONENTS GROUP – OPEN (REF. FIG. 3)

CAP-244

ITEM NO.	DESCRIPTION	QTY.	R/S 15A	R/S 20A	R/S 25A	R/S 30A
1	CONTROL BACK PANEL	SEE TABLE 3				
2	STARTER WITH INTERCHANGEABLE HEATERS SIZE "N" & SIZE "K"					
3	STARTER SIZE "A" WITH INTERCHANGABLE HEATERS					
4	FUSE BLOCK - 30A, 600V	1	RN18314-1	<	<	<
5	TERMINAL BLOCK	6	1330042	<	<	<
6	TERMINAL BLOCK END STOP	1	1330043	<	<	<
7	TRANSFOMER, 150VA,FUSED, 200/208/230/460-120V	SEE TABLE 3				
8	FUSE, TRANSFORMER, PRIMARY					
9	FUSE, TRANSFORMER, SECONDARY					
10	RELAY, 4 POLE, 120V, DPDT	1	1330062	<	<	<
11	SOCKET	1	1330049	<	<	<
12	TIMER, 60 MIN., PLUG-IN	1	1330026	<	<	<
13	ENCLOSURE, 18 x 16 x 8	1	1330058	<	<	<
14	PUSH BUTTON START SWITCH	1	RN18116	<	<	<
15	N.O. CONTACT BLOCK (USED W/ PUSH BUTTON STOP)	2	RN18118-2	<	<	<
16	PUSH BUTTON STOP SWITCH (RED)	1	RN18118	<	<	<
17	N.C. CONTACT	2	RN18118-1	<	<	<
18	2 POSITION SELECTOR SWITCH (CONST/AUTO)	1	RN18104-9	<	<	<
18A	2 POSITION SELECTOR SWITCH (LOAD/UNLOAD)	1	RN18104-7	<	<	<
19	HOURMETER	1	1330048	<	<	<
20	AMBER LIGHT (STAND BY)	1	RN18218	<	<	<
21	RED LIGHT (STOP)	1	RN18217	<	<	<
22	GREEN LIGHT (POWER ON)	1	RN18219	<	<	<
23	TEMPERATURE GAUGE	1	RN18682	<	<	<
24	HEATER - MAIN (NOT SHOWN)	SEE TABLE 3				
25	HEATER - FAN (NOT SHOWN)					
26	FUSE, FAN (NOT SHOWN)					
27	VALVE, SOLENOID	1	RN18422	<	<	<
28	SWITCH, PRESSURE	1	1240007	<	<	<
29	ANTI-START PRESSURE SWITCH	1	RN18134	<	<	<
30	LUG, GROUNDING	2	VE779	<	<	<
31	LIGHT BULBS (NOT SHOWN)	3	RN18270	<	<	<

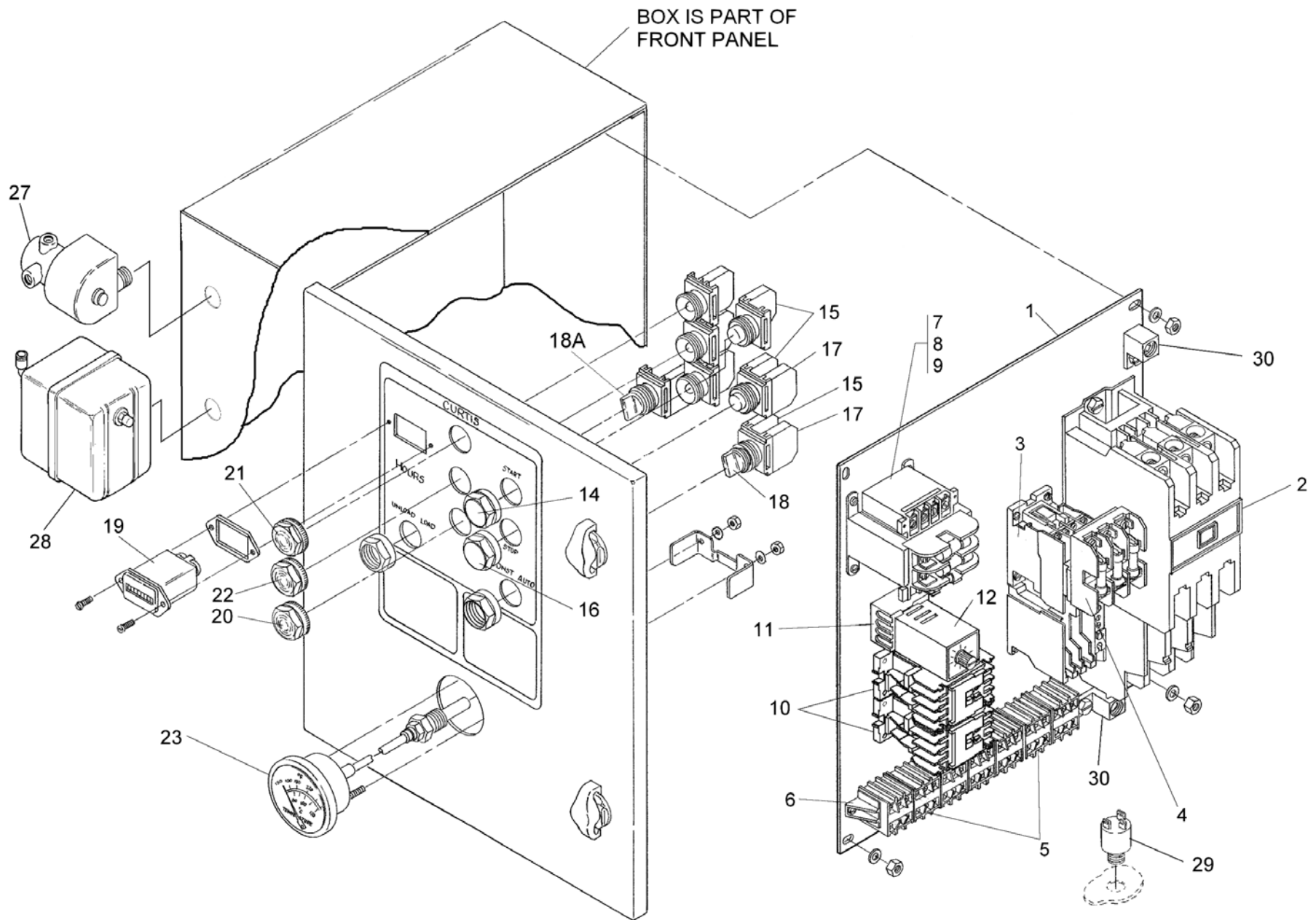


Figure 4: Electrical Components Group (Enclosed)

PARTS LIST FOR ELECTRICAL COMPONENTS GROUP – ENCLOSED (REF. FIG. 4)

CAP-244

ITEM NO.	DESCRIPTION	QTY.	R/S 15A	R/S 20A	R/S 25A	R/S 30A
1	CONTROL BACK PANEL					
2	STARTER WITH INTERCHANGEABLE HEATERS SIZE "N" & SIZE "K"					
3	STARTER SIZE "A" WITH INTERCHANGABLE HEATERS	1	RN18959	<	<	<
4	FUSE BLOCK - 30A, 600V	1	RN18314-1	<	<	<
5	TERMINAL BLOCK	6	1330042	<	<	<
6	TERMINAL BLOCK END STOP	1	1330043	<	<	<
7	TRANSFOMER, 150VA,FUSED, 200/208/230/460-120V					
8	FUSE, TRANSFORMER, PRIMARY					
9	FUSE, TRANSFORMER, SECONDARY					
10	RELAY, 4 POLE, 120V, DPDT	1	1330062	<	<	<
11	SOCKET	1	1330049	<	<	<
12	TIMER, 60 MIN., PLUG-IN	1	1330026	<	<	<
14	PUSH BUTTON START SWITCH	1	RN18116	<	<	<
15	N.O. CONTACT BLOCK (USED W/ PUSH BUTTON STOP)	2	RN18118-2	<	<	<
16	PUSH BUTTON STOP SWITCH (RED)	1	RN18118	<	<	<
17	N.C. CONTACT	2	RN18118-1	<	<	<
18	2 POSITION SELECTOR SWITCH (CONST/AUTO)	1	RN18104-9	<	<	<
18A	2 POSITION SELECTOR SWITCH (LOAD/UNLOAD)	1	RN18104-7	<	<	<
19	HOURMETER	1	RN18250	<	<	<
20	AMBER LIGHT (STAND BY)	1	RN18212	<	<	<
21	RED LIGHT (STOP)	1	RN18210	<	<	<
22	GREEN LIGHT (POWER ON)	1	RN18214	<	<	<
23	TEMPERATURE GAUGE	1	RN18682	<	<	<
24	HEATER - MAIN (NOT SHOWN)					
25	HEATER - FAN (NOT SHOWN)					
26	FUSE, FAN (NOT SHOWN)					
27	VALVE, SOLENOID	1	RN18422	<	<	<
28	SWITCH, PRESSURE	1	1240007	<	<	<
29	ANTI-START PRESSURE SWITCH	1	RN18134	<	<	<
30	LUG, GROUNDING	2	VE779	<	<	<
31	LIGHT BULBS (NOT SHOWN)	3	N/A	N/A	N/A	N/A

	ITEM NO	DESCRIPTION	QTY	200 VOLT	230 VOLT	460 VOLT	575 VOLT
R/S 15A	1	CONTROL BACK PANEL	1	1330034	<	<	<
	2	SIZE "K" STARTER	1	RN18960	<	<	<
	7	TRANSFORMER, 150VA	1	1330075	<	<	1330055
	8	FUSE, TRANSFORMER, PRIMARY	2	RN18345-1	<	<	<
	9	FUSE, TRANSFORMER, SECONDARY	1	RN18351	<	<	<
	24	HEATER - MAIN	1	RN18982	RN18981	RN18978	<
	25	HEATER - FAN	1	RN18973	<	RN18971	RN18970
	26	FUSE, FAN	3	RN18316-2	RN18316-4	RN18315-2	VE382
R/S 20A	1	CONTROL BACK PANEL	1	1330034	<	<	<
	2	SIZE "K" STARTER	1	RN18960	<	<	<
	7	TRANSFORMER, 150VA	1	1330075	<	<	1330055
	8	FUSE, TRANSFORMER, PRIMARY	2	RN18345-1	<	<	<
	9	FUSE, TRANSFORMER, SECONDARY	1	RN18351	<	<	<
	24	HEATER - MAIN	1	RN18983	RN18982	RN18979	RN18978
	25	HEATER - FAN	1	RN18973	<	RN18971	RN18970
	26	FUSE, FAN	3	RN18316-2	RN18316-4	RN18315-2	VE382
R/S 25A	1	CONTROL BACK PANEL	1	1330035	<	1330034	<
	2	SIZE "K" STARTER	1	N/A	N/A	RN18960	<
		SIZE "N" STARTER	1	RN18963	<	N/A	N/A
	7	TRANSFORMER, 150VA	1	1330075	<	<	<
	8	FUSE, TRANSFORMER, PRIMARY	2	RN18345-1	<	<	<
	9	FUSE, TRANSFORMER, SECONDARY	1	RN18351	<	<	<
	24	HEATER - MAIN	1	RN18988	RN18987	RN18980	RN18979
25	HEATER - FAN	1	RN18973	RN18973	RN18971	RN18970	
	26	FUSE, FAN	3	RN18316-2	RN18316-4	RN18315-2	VE382
R/S 30A	1	CONTROL BACK PANEL	1	1330035	<	1330034	<
	2	SIZE "K" STARTER	1	N/A	N/A	RN18960	<
		SIZE "N" STARTER	1	RN18963	<	N/A	N/A
	7	TRANSFORMER, 150VA	1	1330075	<	<	<
	8	FUSE, TRANSFORMER, PRIMARY	2	RN18345-1	<	<	<
	9	FUSE, TRANSFORMER, SECONDARY	1	RN18351	<	<	<
	24	HEATER - MAIN	1	RN18988	RN18988	RN18981	RN18980
25	HEATER - FAN	1	RN18972	RN18972	RN18970	RN18970	
	26	FUSE, FAN	3	RN18316-1	VE383	VE382	RN18344-1
R/S 30A LOT #19	25	HEATER - FAN	1	RN18973	RN18973	RN18971	RN18970
	26	FUSE, FAN	3	RN18316-5	RN18316-2	RN18315-2	RN18315-1

Table 3: CONTROL PANEL, HEATERS AND FUSES

NOTES

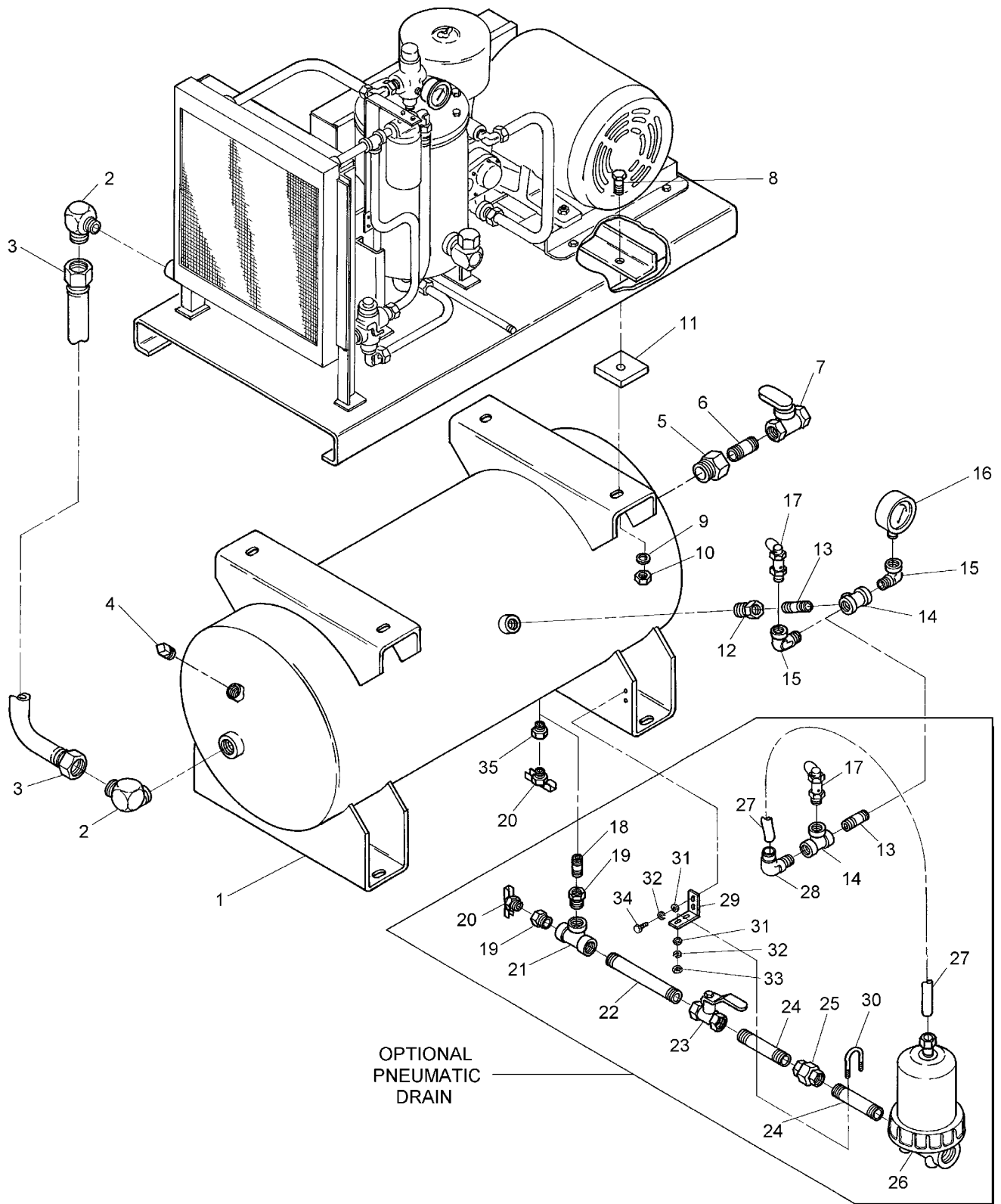


Figure 5: Tank And Base Group

PARTS LIST FOR TANK AND BASE GROUP (REF. FIG. 5)

CAP-244

ITEM NO.	DESCRIPTION	QTY.	R/S 15	R/S 20	R/S 25A	R/S30A
1	TANK ASSEMBLY	1				
	80 GALLON		OFD243			
	120 GALLON			OFD244	<	<
2	MALE ELBOW, 90 DEG. - 1 1/4" x 1"	2	VAA728	<	<	<
3	HOSE ASSEMBLY - 1 1/8" ID x 31" LG.	1	RN60144	<	<	<
4	PIPE PLUG - 1"	1	VA01FA	<	<	<
5	BUSHING - 2" x 1"	2	VA12JFF	<	<	<
6	NIPPLE, SHORT, BLACK - 1" x 2"	1	VA13FCA	<	<	<
7	BALL VALVE - 1"	1	VV541	<	<	<
8	SCREW, HEX HEAD CAP, 1/2-13 UNC x 2" LG, GR. 5	4	VH12PP	<	<	<
9	WASHER - 1/2"	4	VH33P	<	<	<
10	NUT, SELF-LOCKING, 1/2-13	4	VH20P	<	<	<
11	ISOLATOR PAD	4	RN60256	<	<	<
12	BUSHING - 3/8" x 1/4"	1	VA12CBA	<	<	<
13	NIPPLE, BLACK - 1/4"	1	VA13BAB	<	<	<
14	TEE - 1/4"	1	VA10BF	<	<	<
15	ELBOW, STREET, BLACK, 90 DEG. - 1/4"	2	VA08BF	<	<	<
16	GAUGE, AIR PRESSURE	1	RN30320	<	<	<
17	RELIEF VALVE - 1/4"	1	VV406	<	<	<
18	NIPPLE, GALVANIZED - 1/2"	SEE TABLE 4				
19	BUSHING, 3/8" x 1/2"	SEE TABLE 4				
20	DRAIN COCK - 1/4"	1	VV514	<	<	<
21	TEE, BLACK - 3/8"	SEE TABLE 4				
22	NIPPLE, BLACK - 3/8" x 5" LG.	SEE TABLE 4				
23	BALL VALVE - 3/8"	SEE TABLE 4				
24	NIPPLE, GALVANIZED - 3/8" x 3" LG.	SEE TABLE 4				
25	UNION, GALVANIZED - 3/8"	SEE TABLE 4				
26	DRAIN, AUTOMATIC CONDENSATE - SNAP TRAP	SEE TABLE 4				
27	TUBING, NYLON, WHITE - 1/4" OD	SEE TABLE 4				
28	ELBOW, 1/4" NPT x 1/4" OD x 1/4" OD	SEE TABLE 4				
29	BRACE, AUTO DRAIN PIPING	SEE TABLE 4				
30	"U" BOLT #401	SEE TABLE 4				
31	WASHER, CUT, FLAT - 1/4"	SEE TABLE 4				
32	LOCKWASHER - 1/4"	SEE TABLE 4				
33	NUT, HEX, 1/4-20	SEE TABLE 4				
34	SCREW, HEX HEAD CAP, 1/4-20 x 3/4" LG., GR. 5	SEE TABLE 4				
35	BUSHING - 1/2" x 1/4"	1	VA12DBP	<	<	<
36*	STREET ELBOW, 1" NPT (NOT SHOWN)	1	VA08FF	<	<	<
37*	NIPPLE, 1" NPT X 3" LG (NOT SHOWN)	1	VA13FEA	<	<	<
38*	COUPLING, 1" NPT (NOT SHOWN)	1	VA16FA	<	<	<

*APPLIED ONLY FOR ENCLOSED UNITS

ITEM NO	DESCRIPTION	80 GALLON		120 GALLON		200 GALLON		
		QTY	PART NO.	QTY	PART NO.	QTY	PART NO.	
100 PSI	18	NIPPLE, GALVANIZED - 1/2"	1	VA13DAB	1	<	1	<
	19	BUSHING, 3/8" x 1/2"	1	VA12DCP	1	<	1	<
	21	TEE, 3/8"	1	VA10CF	1	<	1	<
	22	NIPPLE, 3/8"	1	VA13CGB	1	VA13CJA	1	VA13CNB
	23	BALL VALVE, 3/8", 200 PSI	1	VV539	1	<	1	<
	24	NIPPLE, 3/8"	2	VA13CCB	2	VA13CEB	2	<
	25	UNION, 3/8"	1	VAC806	1	<	1	<
	26	507 HANKINSON AUTO DRAIN	1	VA539	1	<	1	<
	27	TUBING, NYLON, WHITE - 1/4" O.D.	-	VA1601	-	<	-	<
	28	ELBOW, 1/4 MPT x 1/4 OD, QD	1	VAA703	1	<	1	<
	29	BRACE, AUTO DRAIN PIPING	1	OFE950	1	<	1	<
	30	"U" BOLT #401	1	VH2202	1	<	1	<
	31	WASHER, CUT, FLAT - 1/4"	4	VH32F	4	<	4	<
	32	LOCKWASHER - 1/4"	4	VH35F1	4	<	4	<
	33	NUT, HEX, 1/4-20	2	VH15F1	2	<	2	<
	34	SCREW, HX HD CAP, 1/4-20 x 3/4" LG., GR. 5	2	VH12FF	2	<	2	<
	125 PSI	18	NIPPLE, GALVANIZED - 1/2"	1	VA13DAB	1	<	1
19		BUSHING, 3/8" x 1/2"	1	VA12DCP	1	<	1	<
21		TEE, 3/8"	1	VA10CF	1	<	1	<
22		NIPPLE, 3/8"	1	VA13CGB	1	VA13CJA	1	VA13CNB
23		BALL VALVE, 3/8", 200 PSI	1	VV539	1	<	1	<
24		NIPPLE, 3/8"	2	VA13CCB	2	VA13CEB	2	<
25		UNION, 3/8"	1	VAC806	1	<	1	<
26		507 HANKINSON AUTO DRAIN	1	VA539	1	<	1	<
27		TUBING, NYLON, WHITE - 1/4" O.D.	-	VA1601	-	<	-	<
28		ELBOW, 1/4 MPT x 1/4 OD, QD	1	VAA703	1	<	1	<
29		BRACE, AUTO DRAIN PIPING	1	OFE950	1	<	1	<
30		"U" BOLT #401	1	VH2202	1	<	1	<
31		WASHER, CUT, FLAT - 1/4"	4	VH32F	4	<	4	<
32		LOCKWASHER - 1/4"	4	VH35F1	4	<	4	<
33		NUT, HEX, 1/4-20	2	VH15F1	2	<	2	<
34		SCREW, HX HD CAP, 1/4-20 x 3/4" LG., GR. 5	2	VH12FF	2	<	2	<
150 PSI		18	NIPPLE, GALVANIZED - 1/2"	1	VA13DAB	1	<	1
	19	BUSHING, 3/8" x 1/2"	1	VA12DCP	1	<	1	<
	21	TEE, 3/8"	1	VA10CF	1	<	1	<
	22	NIPPLE, 3/8"	1	VA13CGB	1	VA13CJA	1	VA13CNB
	23	BALL VALVE, 3/8", 200 PSI	1	VV539	1	<	1	<
	24	NIPPLE, 3/8"	2	VA13CCB	2	VA13CEB	2	<
	25	UNION, 3/8"	1	VAC806	1	<	1	<
	26	507 HANKINSON AUTO DRAIN	1	VA539	1	<	1	<
	27	TUBING, NYLON, WHITE - 1/4" O.D.	-	VA1601	-	<	-	<
	28	ELBOW, 1/4 MPT x 1/4 OD, QD	1	VAA703	1	<	1	<
	29	BRACE, AUTO DRAIN PIPING	1	OFE950	1	<	1	<
	30	"U" BOLT #401	1	VH2202	1	<	1	<
	31	WASHER, CUT, FLAT - 1/4"	4	VH32F	4	<	4	<
	32	LOCKWASHER - 1/4"	4	VH35F1	4	<	4	<
	33	NUT, HEX, 1/4-20	2	VH15F1	2	<	2	<
	34	SCREW, HX HD CAP, 1/4-20 x 3/4" LG., GR. 5	2	VH12FF	2	<	2	<
	175 PSI	18	NIPPLE, GALVANIZED - 1/2"	1	VA13DAB	1	<	1
19		BUSHING, 3/8" x 1/2"	1	VA12DCP	1	<	1	<
21		TEE, 3/8"	1	VA10CF	1	<	1	<
22		NIPPLE, 3/8"	1	VA13CGB	1	VA13CJA	1	VA13CNB
23		BALL VALVE, 3/8", 200 PSI	1	VV539	1	<	1	<
24		NIPPLE, 3/8"	2	VA13CCB	2	VA13CEB	2	<
25		UNION, 3/8"	1	VAC806	1	<	1	<
26		507 HANKINSON AUTO DRAIN	1	VA535	1	<	1	<
27		TUBING, NYLON, WHITE - 1/4" O.D.	-	VA1601	-	<	-	<
28		ELBOW, 1/4 MPT x 1/4 OD, QD	1	VAA703	1	<	1	<
29		BRACE, AUTO DRAIN PIPING	1	OFE950	1	<	1	<
30		"U" BOLT #401	1	VH2202	1	<	1	<
31		WASHER, CUT, FLAT - 1/4"	4	VH32F	4	<	4	<
32		LOCKWASHER - 1/4"	4	VH35F1	4	<	4	<
33		NUT, HEX, 1/4-20	2	VH15F1	2	<	2	<
34		SCREW, HX HD CAP, 1/4-20 x 3/4" LG., GR. 5	2	VH12FF	2	<	2	<

Table 4: OPTIONAL PNEUMATIC DRAIN

NOTES

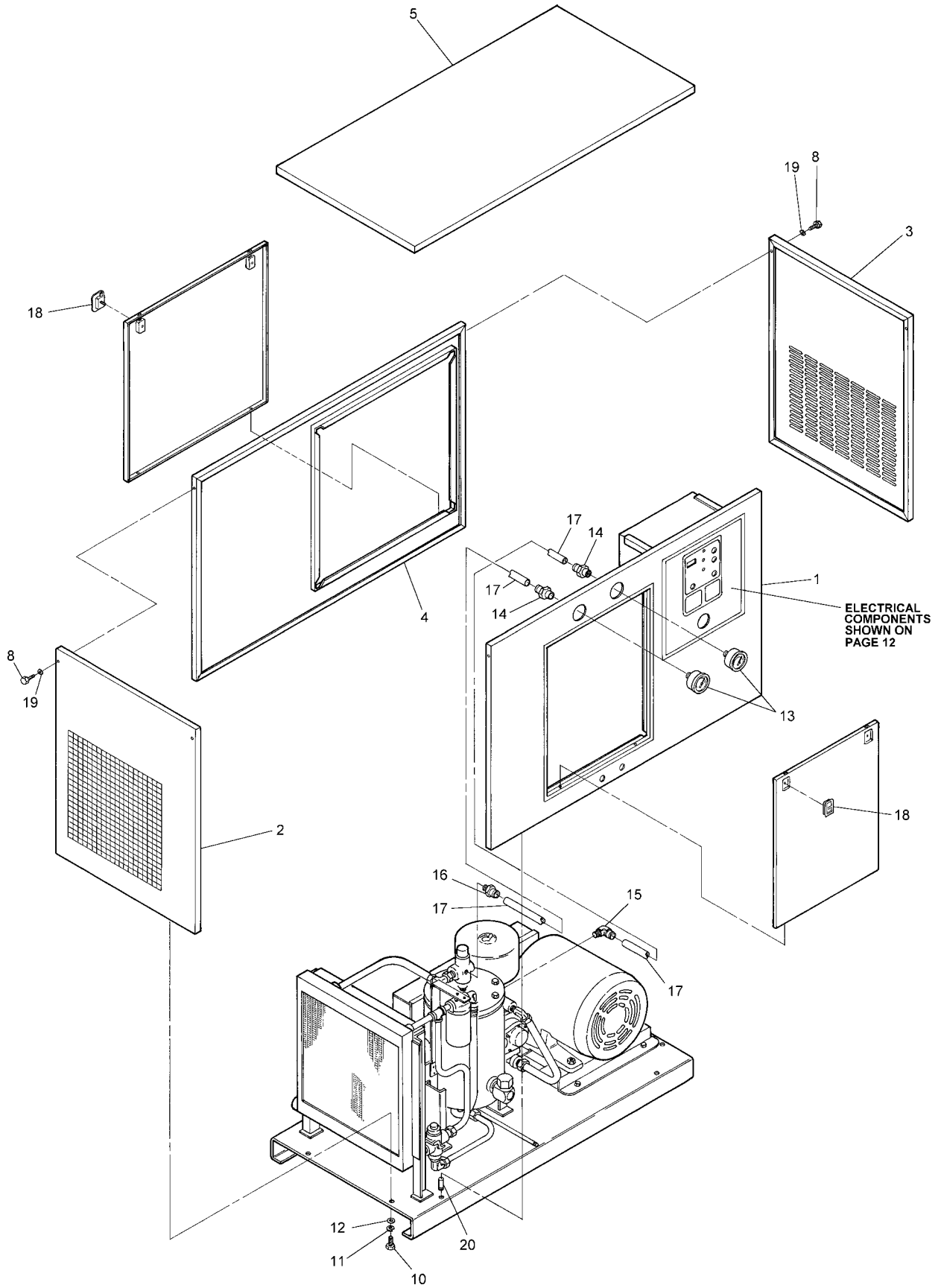


Figure 6: Enclosure Group

PARTS LIST FOR ENCLOSURE GROUP (REF. FIG. 6)

CAP-244

ITEM NO.	DESCRIPTION	QTY.	R/S 15A	R/S 20A	R/S 25A	R/S 30A
1	FRONT PANEL	1	RN10020-1A	<	<	<
2	LEFT SIDE PANEL	1	RN10020-2AA	<	<	<
3	RIGHT SIDE PANEL	1	RN10020-3A	<	<	<
4	BACK PANEL	1	RN10020-4A	<	<	RN10020-7A
5	TOP PANEL	1	RN10020-5A	<	<	<
6	SUPPORT BRACE FOR FRONT PANEL - R.H. (NOT SHOWN)	1	CS679	<	<	<
7	SUPPORT BRACE FOR FRONT PANEL - L.H. (NOT SHOWN)	1	CS758	<	<	<
8	SCREW, SOCKET HEAD CAP, BUTTON HEAD, 1/4-20 x 1 1/2" LG.	4	VH1737	<	<	<
9	SCREW, HEX HEAD CAP, 1/4-20 x 1/2" LG. (NOT SHOWN)	8	VH12FD	<	<	<
10	SCREW, HEX HEAD CAP, 1/4-20 x 1" LG.	4	VH12FH	<	<	<
11	LOCKWASHER - 1/4"	8	VH35F1	<	<	<
12	WASHER, FLAT - 1/4"	8	VH32F	<	<	<
13	GAUGE, AIR PRESSURE, 2 1/2" DIA.	2	RN30322	<	<	<
14	CONNECTOR, STRAIGHT, QD, 1/4" NPTF x 1/4" OD TUBE	2	VAA730	<	<	<
15	CONNECTOR, ELBOW, QD, 1/4" NPT x 1/4" OD TUBE	1	VAA703	<	<	<
16	CONNECTOR, STRAIGHT, QD, 1/4" NPT x 1/4" OD TUBE	1	VAA702	<	<	<
17	TUBE, NYLON, BLACK, #11	-	VA1626	<	<	<
18	PADDLE HANDLE	4	CS681	<	<	<
19	LOCKWASHER, INTERNAL - 1/4"	4	VH38F	<	<	<
20	PIN	4	CS910	<	<	<
21	* ENCLOSURE, NOISE SUPPRESSOR ASSMBLY (NOT SHOWN)	2	RN10020-AA	<	<	<
22	* TOP COVER SOUND ENCLOSURE (NOT SHOWN)	2	RN10020-B	<	<	<

* DENOTES OPTIONAL ITEM

ROUTINE MAINTENANCE KITS

4,000 HOUR KIT

MODEL	WORKING PRESSURE			
	100 PSI	125 PSI	150 PSI	175 PSI
R/S 15A	VGA593	<	<	<
R/S 20A	VGA593	<	<	<
R/S 25A	VGA593	<	<	<
R/S 30A	VGA593	<	<	<

KIT INCLUDES

- (1) SEPARATOR ELEMENT
- (4) OIL FILTER ELEMENTS
- (2) AIR FILTER ELEMENTS

4,000 HOUR KIT (FOR UNITS WITH HEAVY DUTY INLET FILTER)

MODEL	WORKING PRESSURE			
	100 PSI	125 PSI	150 PSI	175 PSI
R/S 15A	VGC538	<	<	<
R/S 20A	VGC538	<	<	<
R/S 25A	VGC538	<	<	<
R/S 30A	VGC538	<	<	<

KIT INCLUDES:

- (1) SEPARATOR ELEMENT
- (4) OIL FILTER ELEMENTS
- (2) HD MAIN ELEMENTS
- (2) SAFETY ELEMENTS HD

8,000 HOUR KIT

MODEL	WORKING PRESSURE			
	100 PSI	125 PSI	150 PSI	175 PSI
R/S 15A	VGB505	<	<	<
R/S 20A	VGB505	<	<	<
R/S 25A	VGB505	<	<	<
R/S 30A	VGB505	<	<	<

KIT INCLUDES:

- (2) SEPARATOR ELEMENT
- (8) OIL FILTER ELEMENTS
- (4) FILTER ELEMENTS AIR

8,000 HOUR KIT (FOR UNITS WITH HEAVY DUTY INLET FILTER)

MODEL	WORKING PRESSURE			
	100 PSI	125 PSI	150 PSI	175 PSI
R/S 15A	VGf510	<	<	<
R/S 20A	VGf510	<	<	<
R/S 25A	VGf510	<	<	<
R/S 30A	VGf510	<	<	<

KIT INCLUDES:

- (2) SEPARATOR ELEMENT
- (8) OIL FILTER ELEMENTS
- (4) HD MAIN ELEMENTS
- (4) HD SAFETY ELEMENTS

12,000 HOUR KIT

MODEL	WORKING PRESSURE			
	100 PSI	125 PSI	150 PSI	175 PSI
R/S 15A	VEG569	VEG569	VEG570	VEG571
R/S 20A	VGD525	VGD525	VEG573	VEG573
R/S 25A	VGD530	VGD530	VGD530	VGD530
R/S 30A	VGD528	VGD528	VGD528	VGC560

KIT INCLUDES:

- (3) SEPARATOR ELEMENT
- (12) OIL FILTER ELEMENTS
- (6) AIR FILTER ELEMENTS
- (1) INLET VALVE KIT
- (1) THERMO BY-PASS VALVE KIT
- (1) MINIMUM PRESSURE VALVE KIT
- (1) SET OF "V" BELTS

ROUTINE MAINTENANCE KITS (CON'T)

12,000 HOUR KIT (FOR UNITS WITH HEAVY DUTY INLET FILTERS)

MODEL	WORKING PRESSURE			
	100 PSI	125 PSI	150 PSI	175 PSI
R/S 15A	VGG513	VGG513	VGG514	VGG515
R/S 20A	VG590	VG590	VGG516	VGG516
R/S 25A	VG593	VG593	VG593	VG593
R/S 30A	VG591	VG591	VG591	VG589

KIT INCLUDES:

- (3) SEPARATOR ELEMENT
- (12) OIL FILTER ELEMENTS
- (6) AIR FILTER ELEMENTS
- (1) INLET VALVE KIT
- (1) THERMO BY-PASS VALVE KIT
- (1) MINIMUM PRESSURE VALVE KIT
- (1) SET OF "V" BELTS

NOTES

NOTES

CURTIS – TOLEDO, INC.

1905 KIENLEN AVE., ST. LOUIS, MO 63133
TEL. (314) 383-1300 FAX (314) 381-1439
E-MAIL: info@curtistoledo.com