

# CURTIS

## *R/S 75D/07*

# PARTS LIST

DIRECT DRIVE

AIR COOLED

380V 50HZ

LOT NUMBER:

R/S 75    16-17

### HOW TO ORDER PARTS

Give name and part number as shown in parts list and serial number. Serial number is on nameplate attached to control panel of unit.

### IMPORTANT

Make a permanent record of the Model and Serial numbers of your machine here. You'll save time and expense by including this reference identification on replacement parts

MODEL : \_\_\_\_\_

SER. NO.: \_\_\_\_\_

## CURTIS-TOLEDO, INC.

1905 KIENLEN AVENUE, ST. LOUIS, MISSOURI 63133

Tel. (314) 383-1300

Fax (314) 381-1439

E-MAIL: [info@curtistoledo.com](mailto:info@curtistoledo.com)



# **DANGER**

Air used for breathing or food processing must meet OSHA 29CFR 1910.134 or FDA 21CFR 178.3570 Regulations. Failure to do so may cause severe injury or death

# INTRODUCTION

## HOW TO USE THE PARTS LIST

Using the List of Illustrations obtain the figure number of the assembly in which your part is located. Go to the appropriate figure and locate your part on the illustration. Using the key number, find the part on the parts list.

## LIST OF ILLUSTRATIONS

<u>Title</u>	<u>Page</u>
Major Components Group	2
Air and Oil Piping Group	4
Electrical Components Group	8
Enclosure Group	10
Routine Maintenance Kits	12



## **WARNING**

Personal injury and/or equipment damage will result by failing to pay attention to the vital safety information and instruction in the operating and instruction manual. Carefully read, understand, and retain all safety information and instructions before operating this unit.

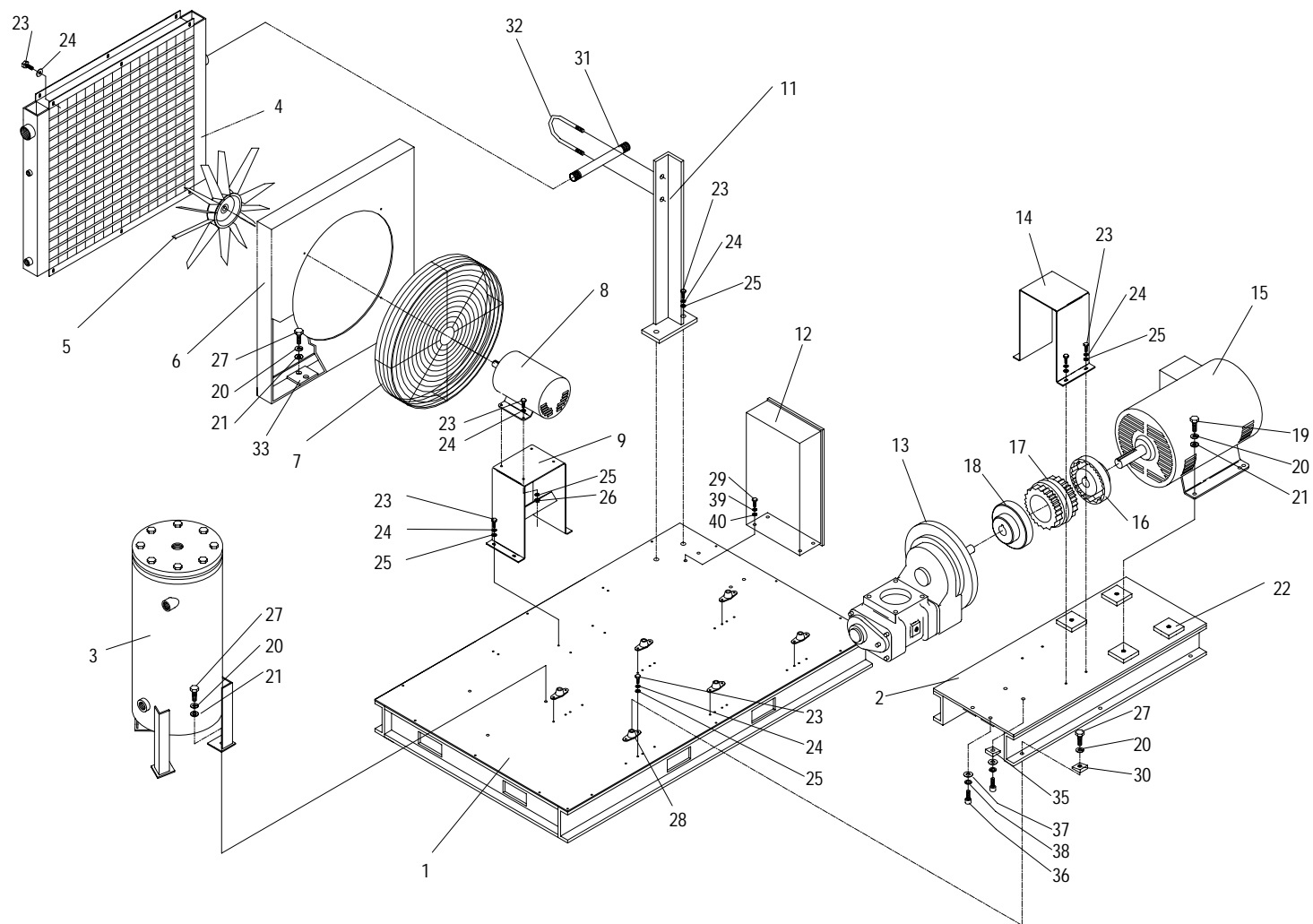


FIGURE 1: MAJOR PARTS GROUP

**PARTS LIST FOR MAJOR PARTS GROUP (REF. FIG. 1)**

CAP-289

ITEM NO.	DESCRIPTION	QTY.	R/S 75
1	MAIN BASE ASSEMBLY	1	RN10103
2	SUB BASE, MOTOR	1	RN10108-5
3	SEPARATOR, OIL/AIR	1	RN10223-2
4	COOLER, AIR/OIL	1	RN32219
5	BLADE, FAN	1	RN32408
6	SHROUD, FAN	1	RN10470
7	GUARD, FAN	1	RN10460
8	MOTOR, FAN, 3 PHASE, 50 Hz, 380V, TEFC, 5HP	1	VM947
9	MOUNT, FAN MOTOR	1	RN10120-6
* 10	MOISTURE SEPARATOR	1	RN34127
11	DISCHARGE PIPE SUPPORT	1	RN10148
12	PANEL, CONTROL	1	1331015
13	AIR END, 7.5 bar, 109 psi	1	CS646-22
	AIR END, 10 bar, 145 psi	1	CS646-8
14	COUPLING GUARD	1	RN10340-7
15	MOTOR, MAIN, 3 PHASE, 50 Hz, 380V, TEFC, 75 HP	1	RN19079-3
16	COUPLING, MOTOR FLANGE	1	RN14517-14
17	SLEEVE	1	RN14512-1
18	COUPLING, AIR END FLANGE	1	RN14517-15
19	HHCS 1/2-13UNC X 1-3/4", GRADE 5	4	VH12PN
20	LOCKWASHER-KANTLINK-LIGHT, 1/2"	17	VH35P
21	WASHER-STEEL CUT, 1/2"	11	VH32P
22	MOTOR MOUNTING BLOCKS	4	RN10135
23	SCREW, HEX HEAD CAP, 5/16-18 x 3/4" LG.	32	VH12HF
24	LOCKWASHER - 5/16"	32	VH35H
25	WASHER, FLAT - 5/16"	32	VH32H
26	NUT, HEX - 5/16"	4	VH15H
27	HHCS 1/2-20 UNF X 1 1/4"	13	VH12NK
28	MOUNTS-VIBRATION	6	RN60255
29	SCREW, HEX HEAD CAP, 3/8-16 x 1" LG.	4	VH12KH
30	WASHER-SQUARED BEVELED, 1/2"	8	VH50N
31	NIPPLE	1	VAC837
32	U-BOLT, FULL CIRCLE	1	VH2211
33	STEEL PLATE MOUNTING, FAN COOLER ASSEMBLY	2	RN10470-1
36	BOLT	4	VH1433
37	WASHER, FLAT	4	VH1239
38	LOCKWASHER	4	VH1240
39	LOCKWASHER - 3/8"	4	VH35K
40	WASHER, FLAT - 3/8"	4	VH32K

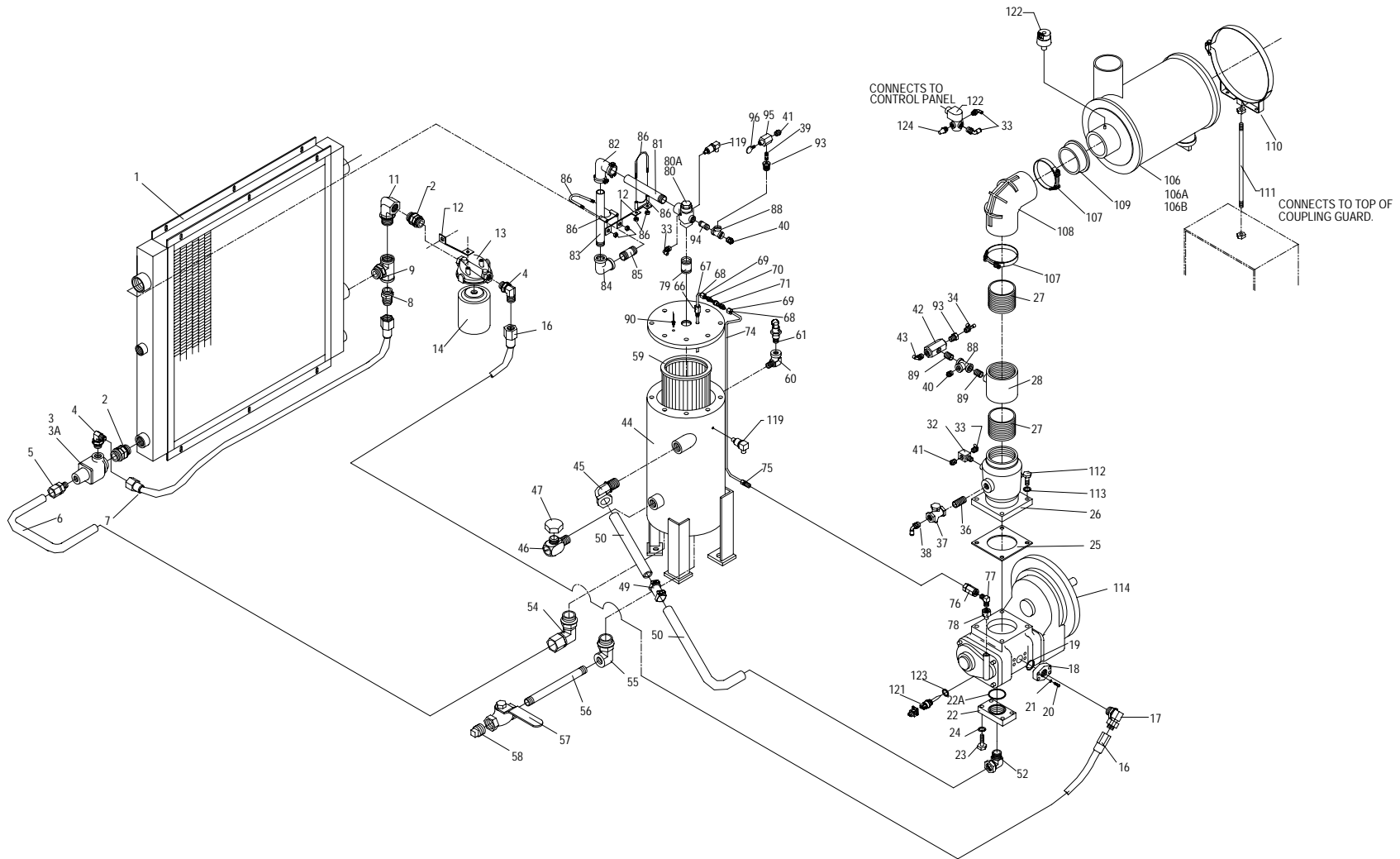


FIGURE 2: AIR AND OIL PIPING GROUP

**PARTS LIST FOR AIR AND OIL PIPING GROUP (REF. FIG. 2)**

CAP-289

ITEM NO.	DESCRIPTION	QTY.	R/S 75
1	COOLER, AIR / OIL	1	RN32219
2	UNION, STRAIGHT THREAD, SAE 16	2	VAB702
3	THERMO VALVE, SAE 16, 170F	1	RN42417
3A	THERMO VALVE SERVICE KIT, 170F	1	RN42417-1
4	CONNECTOR, ELBOW, 1-5/16"-12 UN 37FL X SAE 16	2	VAB708
5	CONNECTOR, 1" OD X SAE 16	1	VAB705
6	TUBE, 1" OD, SEPARATOR TO THERMO VALVE	1	OFE1001
7	HOSE ASSY, 7/8" ID	1	RN60195
8	CONNECTOR, 1-5/16"-12, 37 FL, SAE 16 STRAIGHT	1	VAB725
9	BRANCH TEE, STRAIGHT THREAD, SAE 16	1	VAB726
11	ELBOW, STRAIGHT THREAD, SAE 16	1	VAB727
12	BRACE	3	CS897
13	OIL FILTER HEAD, SAE 16	1	RN28107
14	OIL FILTER ELEMENT	1	RN28204
16	HOSE ASSY, 7/8" ID	1	RN60194
17	CONNECTOR, ELBOW, 1-5/16"-12 UN 37FL X SAE 16, O-RING	1	VAA793
18	FLANGE, 1" OD, OIL INJ. E25	1	RN10677-2
19	O-RING	1	RN10677-1
20	SHCS M10 X 1.5 X 35	4	VH1453
21	LOCKWASHER, M10 FOR SOCKET SCREWS	4	VH1242
22	FLANGE, 2" NPT	1	RN10676-4
22A	O-RING	1	RN10676-5
23	BOLT, M16 X 2.0 X 45mm	4	VH1440
24	LOCKWASHER, 16mm	4	VH1234
25	GASKET, INLET VALVE	1	RN24577-1
26	VALVE INLET, 4"	1	RN24577
27	NIPPLE, 4"NPT	2	VA13NAA
28	COUPLING, 4" & 1/2"	1	RN24577-2
32	VALVE, SHUTTLE, 1/4"	1	RN42105
33	CONNECTOR, 1/4" NPT X 1/4" OD, QD, ELBOW	4	VAA703
34	RUN TEE, 1/4" NPT X 1/4" OD X 1/4"OD	1	VAB746
36	NIPPLE, CLOSE, 3/8"NPT	1	VA13CAB
37	CHECK VALVE, INLINE, 3/8" NPT	1	VV832
38	CONNECTOR, ELBOW, 3/8" NPT X 3/8"OD, QUICK DISCONNECT	1	VAA751
39	NIPPLE, CLOSE, 1/4"NPT	1	VA13BAA
40	CONNECTOR, STR., 1/2" NPT X 3/8" OD, QUICK DISCONNECT	2	VAA785
41	CONNECTOR, STR., 1/4" NPT X 1/4" OD, QUICK DISCONNECT	2	VAA702
42	VALVE BLOW DOWN, 1/2"	1	RN18425
43	CONNECTOR, ELBOW, 1/2" NPT X 3/8"OD, QUICK DISCONNECT	1	VAA753
44	AIR / OIL SEPARATOR	1	RN10223-2
45	MALE ELBOW, 2" OD TUBE X 2" NPT	1	VAB780

**PARTS LIST FOR AIR AND OIL PIPING GROUP (REF. FIG. 2)**

CAP-289

ITEM NO.	DESCRIPTION	QTY.	R/S 75
46	OIL FILL & SIGHT GLASS	1	RN52171
47	CAP, OIL FILLER / SIGHT GLASS	1	CS741
49	COUPLING, 2" FLEX	1	RN60220
50	TUBE STEEL, 2"OD	1	OFE1000
52	ELBOW MALE, 2"OD X 2"NPT	1	RN52184
54	CONNECTOR, ELBOW, SAE16 X 1"OD	1	RN52144
55	ELBOW FEMALE, 1-1/16-12 UN X 3/4"NPT	1	RN60078
56	NIPPLE, 3/4"NPT X 12"LG.	1	VA13ESA
57	VALVE, BALL, 3/4"NPT	1	VV540
58	PIPE PLUG, 3/4"NPT	1	VA01ER
59	SEPARATOR ELEMENT	1	RN27526
60	ELBOW-STREET, 3/4"NPT	1	VA08EF
61	SAFETY VALVE, 3/4"NPT		
	150 PSI (USED ON 7.5 bar UNITS)	1	RN42820
	175 PSI (USED ON 10 bar UNITS)	1	RN42821
65	TUBING, 1/4"OD NYLON, BLACK (NOT SHOWN)	-	VA1626
66	SCAVENGER COMPRESSION CONNECTOR	1	RN52151
67	STEEL TUBE, SCAVENGER LINE	1	OFE961
68	SLEEVE, 1/4"OD, STEEL	2	VAA757
69	NUT, 1/4"OD, STEEL	2	VAA756
70	UNION, 1/4"OD X 1/4"OD, STEEL	1	VAA701
71	GLASS SIGHT	1	RN52170
74	STEEL TUBE, SCAVENGER LINE	1	OFE953
75	ORIFICE SCAVENGER, COMPRESSION CONNECTOR	1	RN52136-1
76	CHECK VALVE, INLINE, 1/4"NPT	1	VV834
77	ELBOW MALE, 1/4"NPT X 1/4"NPT, STEEL	1	VAA754
78	ADAPTER, 1/8"BSPP X 1/4" NPT	1	CS854
78A	WASHER, BOND SEAL	1	VAA746
79	NIPPLE 2" NPT X 3"	1	VA24JEA
80	VALVE, MINIMUM PRESSURE	1	RN42130
80A	SERVICE KIT, MINIMUM PRESSURE VALVE	1	RN42130-1
81	NIPPLE, 2" NPT X 11"	1	VA13JRA
82	COUPLING, 2" 90° ELBOW	1	RN60221
83	NIPPLE 2" NPT X 15 1/2"	1	VAD808
84	ELBOW, 2" 90°	1	VA06JP
85	NIPPLE, 2" NPT	1	VA24JEA
86	U-BOLT, FULL CIRCLE	2	VH2211

**PARTS LIST FOR AIR AND OIL PIPING GROUP (REF. FIG. 2)**

CAP-289

ITEM NO.	DESCRIPTION	QTY.	R/S 75
88	TEE, 1/2" NPT	2	VA10DF
89	NIPPLE, 1/2"NPT	2	VA13DAB
90	TEMPERATURE SWITCH, 1/2"NPT	1	RN18657
92	TUBING, NYLON, 3/8" OD (NOT SHOWN)	-	VA1628
93	BUSHING, 1/2"NPT X 1/4"NPT	2	VA12DBQ
94	NIPPLE, 1/2", SHORT	1	VA13DBB
95	MODULATING VALVE, 1/4"NPT	1	RN42613
96	THUMB SCREW, 1/4-28 X 1", PLASTIC KNURLED HEAD	1	CS793
106	HEAVY DUTY FILTER	1	RN24079
106A	HEAVY DUTY FILTER MAIN ELEMENT	1	RN24079-1
106B	HEAVY DUTY FILTER SAFETY ELEMENT	1	RN24079-2
107	T-BAR CLAMP	2	RN24079-8
108	90 DEGREE ELBOW	1	RN24079-7
109	REDUCER INSERT	1	RN24079-6
110	MOUNTING BAND	1	RN24079-3
111	MOUNTING HARDWARE	1	RN24079-9
112	BOLT M16 X 2.0 X 45mm	4	VH1440
113	LOCKWASHER 16mm	4	VH1234
114	AIR END, GEAR RATIO 3.00 FOR 7.5 bar UNIT		CS646-2
	AIR END, GEAR RATIO 2.33 FOR 10 bar UNIT		CS646-13
119	PRESSURE SENSOR	2	1240016
120	SOLENOID VALVE	1	RN18422
121	TEMPERATURE SENSOR	1	1240017
122	AIR FILTER EL. INDICATOR	1	1240018
123	COPPER SEAL	1	RN18679-2
124	MUFFLER EXHAUST 1/4"	1	RN52160
	SHIPPED LOOSE NOT ON DRAWING		
-	MOISTURE SEPARATOR	1	RN34127
-	NIPPLE 2" NPT	1	VA24JAA
-	VALVE, BALL	1	VV537
-	DRAIN COCK 1/4"	1	VV514
-	BUSHING 1/2" X 1/4"	1	VA12DBP

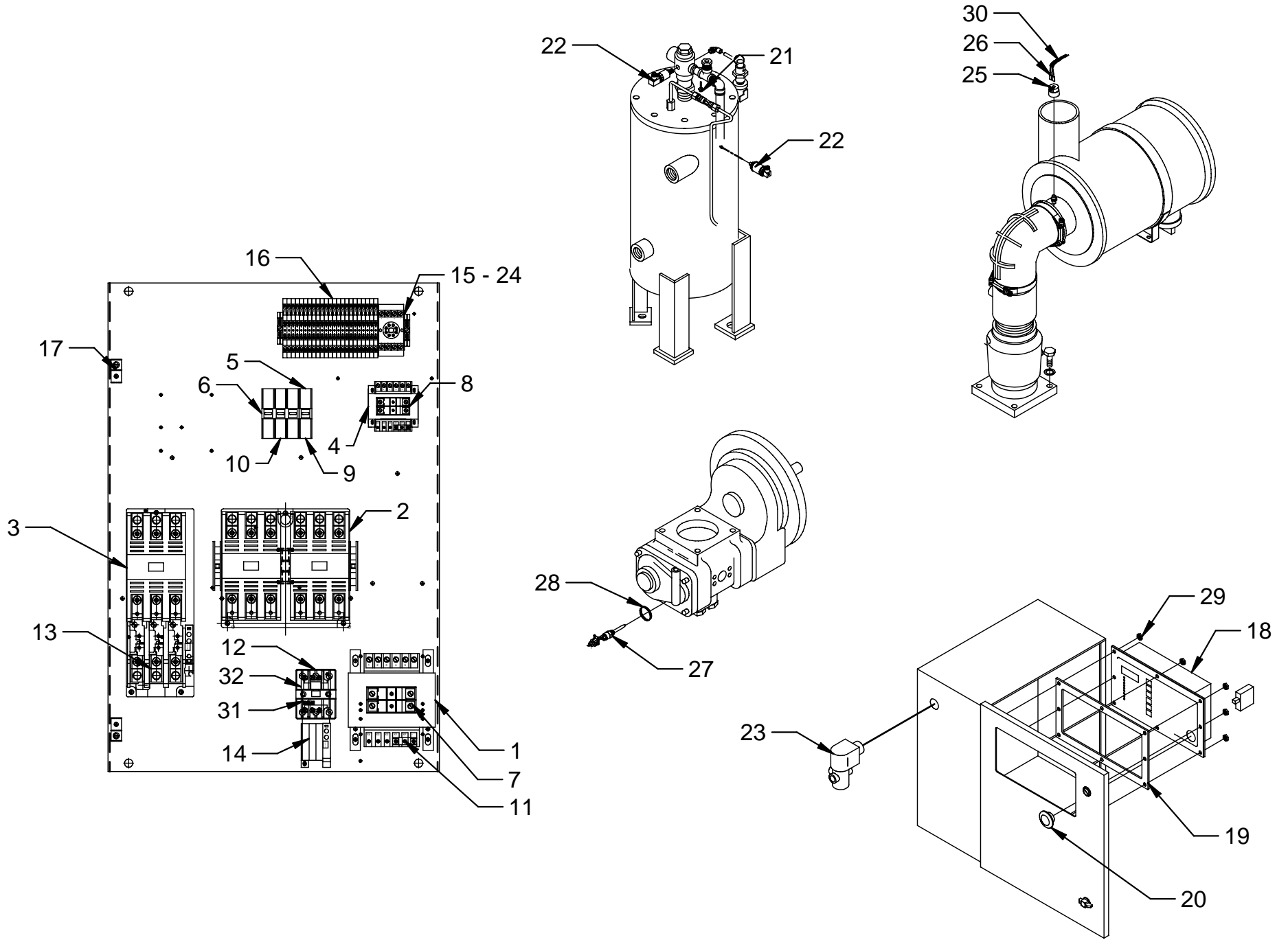


FIGURE 3: ELECTRICAL COMPONENTS GROUP

**PARTS LIST FOR ELECTRICAL COMPONENTS (FIG. 3)**

CAP-289

ITEM NO.	DESCRIPTION	QTY.	R/S 75
1	TRANSFORMER 250VA 230/400/460/575V – 120V	1	1330054
2	CONTACTOR WYE - DELTA	1	RN18536
3	STARTER, MAIN MOTOR SIZE K	1	RN18960
4	TRANSFORMER 50 VA 120/230 – 24V	1	1330149
5	FUSE BLOCK, 1 POLE 30A	1	RN18310
6	FUSE BLOCK, 3 POLE 30A	2	VE395
7	FUSE, PRIMARY TRANSFORMER 1, 2.5A	2	VE334
8	FUSE, SECONDARY TRANSFORMER 2, 1.6 A	2	VE380
9	FUSE, PRIMARY TRANSFORMER 2, .5 A	1	RN18341
10	FUSE, PHASE RELAY, 2A	3	VE394
11	FUSE, SECONDARY TRANSFORMER 1, 3A	1	RN18393
12	STARTER, FAN MOTOR SIZE E	1	RN18965
13	HEATER PACK, MAIN MOTOR	1	RN18983
14	HEATER PACK, FAN MOTOR	1	RN18976
15	PHASE RELAY	1	VS631
16	TERMINAL BLOCK	1	RN18397
17	GROUNDING LUG	2	VE779
18	AIRMASTER M6 CONTROLER	1	1380001
19	GASKET FOR M6	1	1230001
20	E-STOP BUTTON WITH N.C. CONTACT	1	1240006
21	TEMPERATURE SWITCH	2	RN18659
22	PRESSURE SENSOR	2	1240016
23	SOLENOID VALVE	1	RN18422
24	8 PIN SOCKET 600V	1	VS618
25	AIR FILTER EL. INDICATOR	1	1240018
26	QUICK DISCONNECT TERMINAL	2	VE792
27	TEMPERATURE SENSOR	1	1240017
28	COPPER SEAL	1	RN18679-2
29	NUT-HEX, 10-32	8	VH15C
30	BUNDLING WRAP	2'	1030002
31	FUSE FAN STARTER 15A	3	RN18317-2
32	FUSE BLOCK ASSY	1	RN18314-1

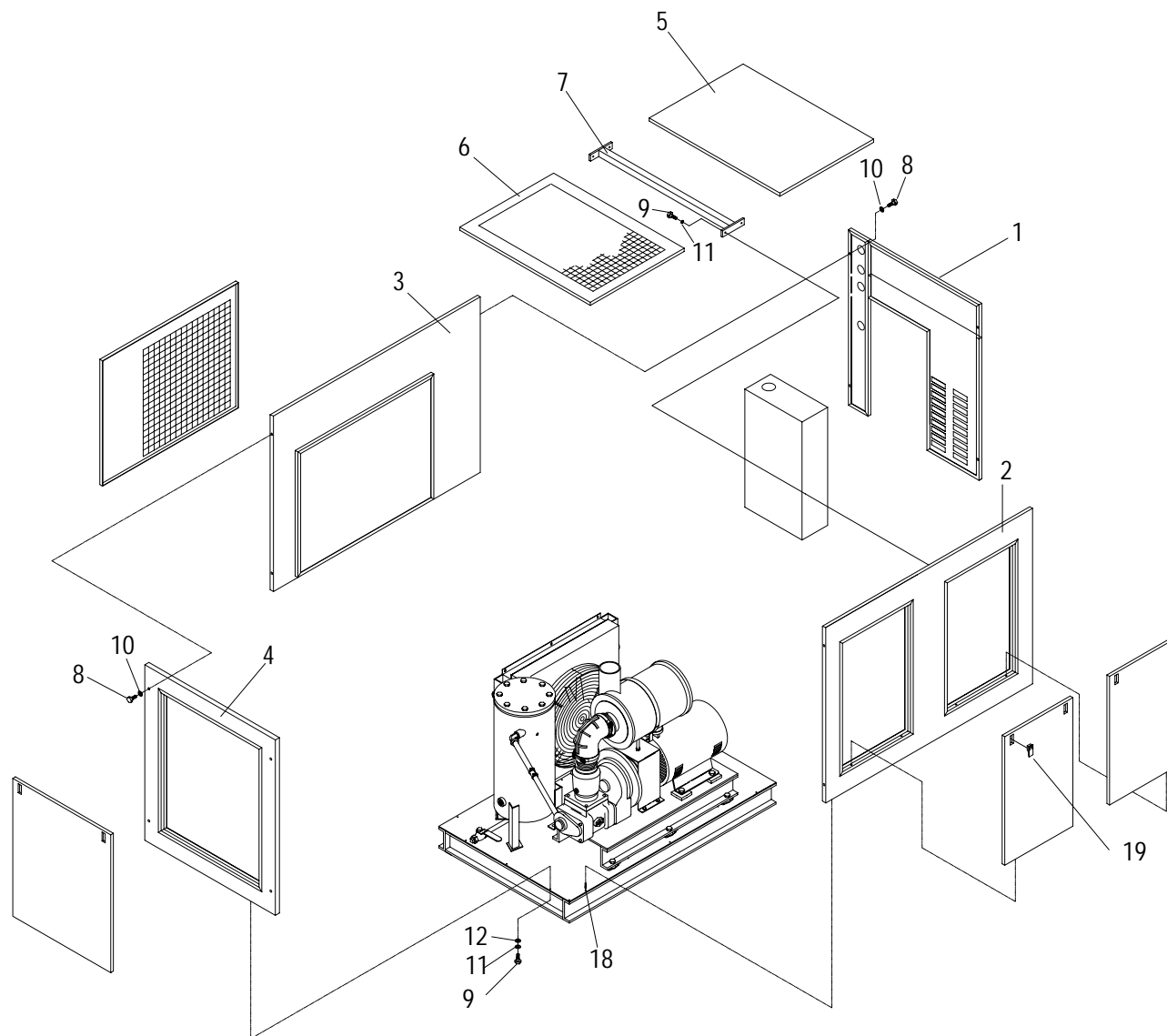


FIGURE 4: ENCLOSURE GROUP

**PARTS LIST FOR ENCLOSURE GROUP (REF. FIG. 4)**

CAP-289

<b>ITEM NO.</b>	<b>DESCRIPTION</b>	<b>QTY.</b>	<b>R/S 75</b>
1	FRONT PANEL ASSEMBLY	1	RN10050-19
2	LEFT SIDE PANEL ASSEMBLY	1	RN10050-12
3	RIGHT SIDE PANEL ASSEMBLY	1	RN10050-13
4	REAR PANEL ASSEMBLY	1	RN10050-11
5	TOP PANEL (FRONT) ASSEMBLY	1	RN10050-15
6	TOP PANEL (BACK) ASSEMBLY	1	RN10050-16
7	TOP CROSS SUPPORT, 52" X 2"	1	RN10050-08
8	SCREW, SOCKET HEAD CAP, BUTTON HEAD, 1/4-20 x 1 1/2" LG.	8	VH1737
9	SCREW HEX HEAD CAP, 1/4-20 x 3/4" LG.	11	VH12FF1
10	LOCKWASHER INTERNAL TEETH – 1/4"	8	VH38F
11	LOCKWASHER - 1/4"	11	VH35F1
12	WASHER, FLAT – 1/4"	7	VH32F1
18	PIN	6	CS910
19	LATCH	8	CS914

## ROUTINE MAINTENANCE KITS

KIT INCLUDES	R/S 75D 7.5-10bar		
	4,000 Hour	8,000 Hour	12,000 Hour
Part Number	<b>VGC543</b>	<b>VGf540</b>	<b>VGf570</b>
Separator Element	(1)	(2)	(3)
Oil Filter Element	(4)	(8)	(12)
HD Air Filter Main Element	(2)	(4)	(6)
HD Air Filter Safety Element	(2)	(4)	(6)
Inlet Valve Kit	-	-	(1)
Thermo By-Pass Valve Kit	-	-	(1)
Minimum Pressure Valve Kit	-	-	(1)
Coupling Sleeve	-	-	(1)

# NOTES

**CURTIS – TOLEDO, INC.**

1905 KIENLEN AVE., ST. LOUIS, MO 63133  
TEL. (314) 383-1300 FAX (314) 381-1439  
E-MAIL: [info@curtistoledo.com](mailto:info@curtistoledo.com)  
WEBSITE: [www.curtistoledo.com](http://www.curtistoledo.com)