

CURTIS

R/S 40B & 50B

PARTS LIST

AIR END MODEL

B160
WATERCOOLED

LOT NUMBER:.

R/S 40B W-C #01
R/S 50B W-C #03

HOW TO ORDER PARTS

Give name and part number as shown in parts list and serial number. Serial number is on nameplate attached to control panel of unit.

IMPORTANT

Make a permanent record of the Model and Serial numbers of your machine here. You'll save time and expense by including this reference identification on replacement parts.

MODEL : _____

SER. NO.: _____

CURTIS-TOLEDO, INC.

1905 KIENLEN AVENUE, ST. LOUIS, MISSOURI 63133

Tel. (314) 383-1300

Fax (314) 381-1439

E-MAIL: info@curtistoledo.com

INTRODUCTION

HOW TO USE THE PARTS LIST

Using the List of Illustrations obtain the figure number of the assembly in which your part is located. Go to the appropriate figure and locate your part on the illustration. Using the key number, find the part on the parts list.

LIST OF ILLUSTRATIONS

<u>Title</u>	<u>Page</u>
Major Components Group	2
Air And Oil Piping Group	6
Electrical Components Group – Open	10
Electrical Components Group - Enclosed	11
Enclosure Group	14



WARNING

Personal injury and/or equipment damage will result by failing to pay attention to the vital safety information and instruction in the operating and instruction manual. Carefully read, understand, and retain all safety information and instructions before operating this unit.

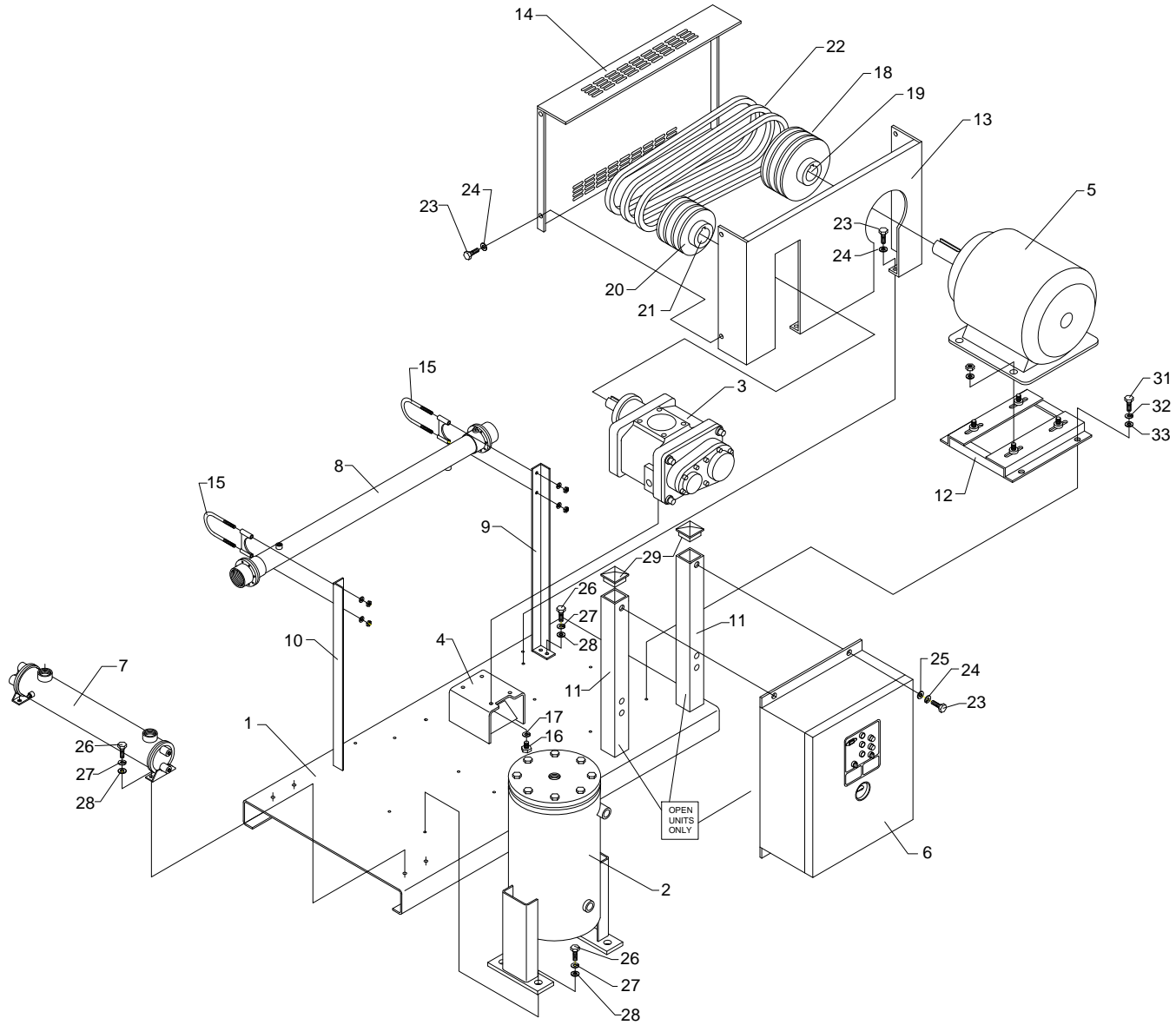


Figure 1: Major Components Group

PARTS LIST FOR MAJOR PARTS GROUP (REF. FIG. 1)

ITEM NO.	DESCRIPTION	QTY.	R/S 40B (B160)	R/S 50B (B160)
1	BASE	1	RN10116	<
2	SEPARATOR, OIL/AIR	1	RN10222-2	<
3	AIR END	1	CS643	<
4	MOUNTING PLATE, AIR END	1	RN10127	<
5	MOTOR, MAIN, 3 PHASE, 60 Hz, 200V, ODP	1	RN19045	RN19051-2
	MOTOR, MAIN, 3 PHASE, 60 Hz, 230/460V, ODP	1	RN19041	RN19051
	MOTOR, MAIN, 3 PHASE, 60 Hz, 575V, ODP	1	RN19041-5	RN19051-5
6	PANEL, CONTROL	1		
	SIZE, "K"		1330000	<
	SIZE, "N"		1330001	<
7	COOLER, OIL, W/C	1	RN33157	<
8	AFTERCOOLER, W/C	1	CX740	<
9	COOLER SUPPORT ASSEMBLY, L.H.	1	CS700	<
10	COOLER SUPPORT ASSEMBLY, R.H.	1	CS701	<
11	SUPPORT, CONTROL PANEL	2	CS667	<
12	BASE, MOTOR	1	RN12030	RN 12040
13	BELTGUARD, BACK	1	RN 10510-5	
14	BELTGUARD, FRONT	1	RN10510	
15	U-BOLT	2	VH2215	
16	BOLT, M12(M10)	4	VH1665	
17	LOCKWASHER, M12 (M10)	4	VH1239	
18	SHEAVE, MOTOR			
19	BUSHING, MOTOR			
20	SHEAVE, AIR END			
21	BUSHING, MOTOR			
22	BELT			
23	SCREW, HEX WASHER HEAD, 1/4-20 x 3/4" LG.	13	VH51FF	<
24	LOCKWASHER, 1/4"	17	VH35F	<
25	WASHER, FLAT, 1/4"	4	VH32F	<
26	SCREW, HEX HEAD CAP, 5/16-18 x 3/4" LG.	12	VH12HF	<
27	LOCKWASHER, 5/16"	12	VH35H	<
28	WASHER, FLAT, 5/16"	12	VH32H	<
32	LOCKWASHER, 1/2"	4	VH35P	<
33	WASHER, FLAT, 1/2"	4	VH32P	<
34	AIR END SEAL KIT (NOT SHOWN)	1	RN90437-1	<
35	MOISTURE SEPARATOR, (for base mtd unit) NOT SHOWN		RN34120	<

SEE TABLE 1

*FOR MOTOR PART NUMBERS OTHER THAN STANDARD ODP, CONSULT FACTORY

	ITEM NO	DESCRIPTION	R/S 40B		R/S 50B
			QTY	PART NO.	PART NO.
100 PSI	18	SHEAVE, MOTOR	1	RN14138	<
	19	BUSHING, MOTOR	1	RN14177-4	RN14177-5
	20	SHEAVE, AIR END	1	RN14137	RN14180
	21	BUSHING, AIR END	1	RN14177-2	RN14178-1
	22	BELT	4	RN14316-1	RN14315-1
125 PSI	18	SHEAVE, MOTOR	1	RN14110	RN14138
	19	BUSHING, MOTOR	1	RN14177-4	RN14177-5
	20	SHEAVE, AIR END	1	RN14106	RN14181
	21	BUSHING, AIR END	1	RN14177-2	RN14178-1
	22	BELT	4	RN14316-1	RN14315-1
150 PSI	18	SHEAVE, MOTOR	1	RN14109	RN14138
	19	BUSHING, MOTOR	1	RN14177-4	RN14177-5
	20	SHEAVE, AIR END	1	RN14109	RN14137
	21	BUSHING, AIR END	1	RN14177-2	RN14177-2
	22	BELT	4	RN14315-1	RN14316-1
175 PSI	18	SHEAVE, MOTOR	1	RN14106	RN14135
	19	BUSHING, MOTOR	1	RN14177-4	RN14177-5
	20	SHEAVE, AIR END	1	RN14110	RN14181
	21	BUSHING, AIR END	1	RN14177-2	RN14178-1
	22	BELT	4	RN14316-1	RN14315-1

TABLE 1: SHEAVES, BUSHING AND BELTS

NOTES

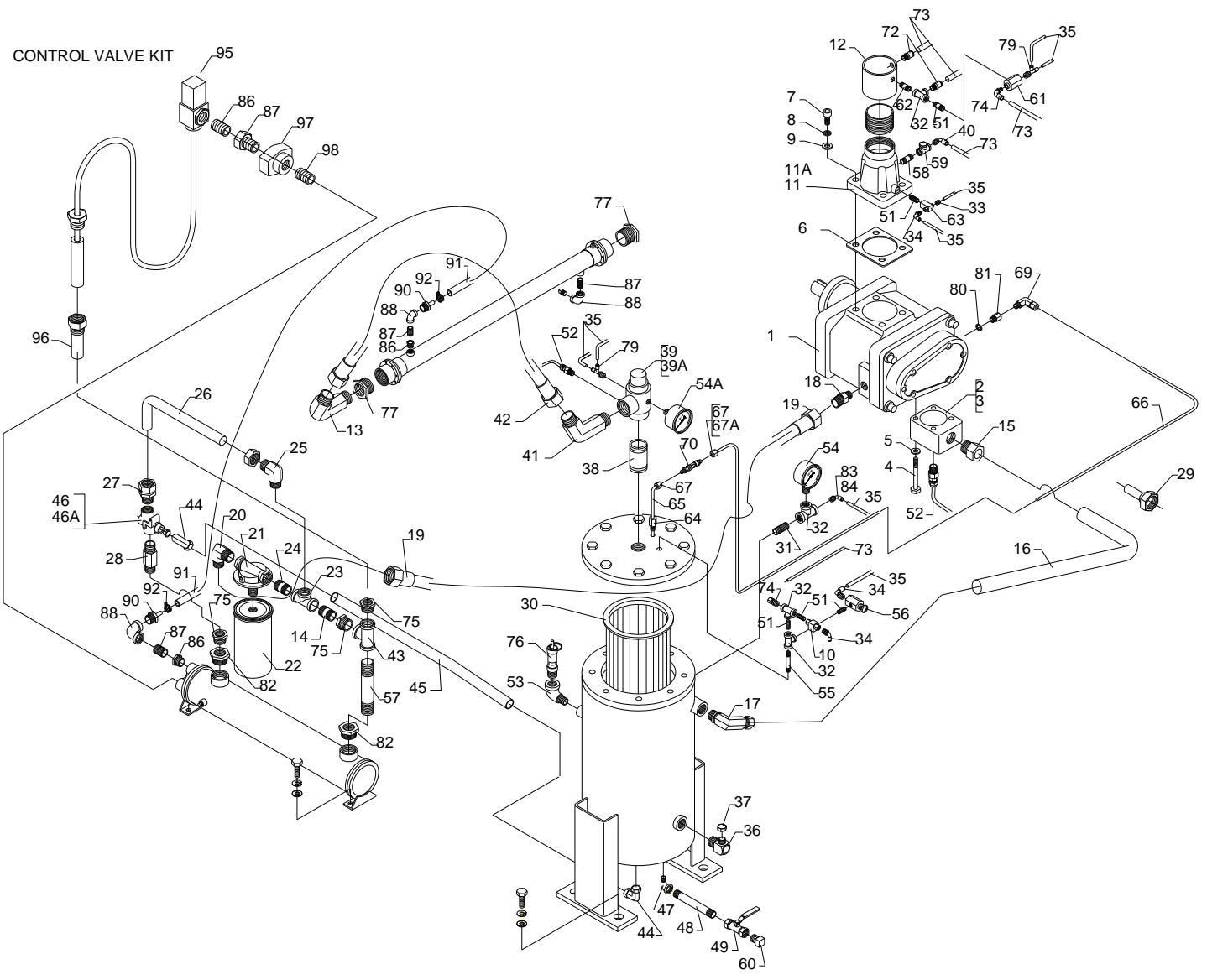


Figure 2: Water and Oil Piping Group

PARTS LIST FOR AIR AND OIL PIPING GROUP (REF. FIG. 2)

ITEM NO.	DESCRIPTION	QTY.	R/S 40B (B160)	R/S 50B (B160)
1	AIR END	1	CS643	<
2	FLANGE, DISCHARGE	1	RN10682-2	<
3	"O" RING (NOT SHOWN)	1	RN10682-1	<
4	BOLT, M12x 1.75	4	VH1452	<
5	LOCK WASHER, 12mm	4	VH1240	<
6	GASKET, INLET VALVE	1	RN 10674-3	<
7	BOLT	4	VH1433	<
8	LOCKWASHER	4	VH1240	<
9	WASHER	4	VH1239	<
10	VALVE, SHUTTLE	1	RN42105	<
11	VALVE, INLET	1	RN24582	<
11A	KIT, SERVICE, INLET VALVE	1	RN24570-2	<
12	COUPLING 2 1/2"	1	200000	<
13	CONNECTOR, 1 1/4"OD FL x 1 1/4"NPT, ELBOW	1	VAB759	<
14	NIPPLE, 3/4" NPT X 10"	1	VA13EQA	<
15	CONNECTOR, STRAIGHT	1	VAB707	<
16	TUBE, STEEL	1	OFE981	<
17	CONNECTOR, ELBOW	1	RN52145	<
18	CONNECTOR	1	RN60166-10	<
19	HOSE, ASSEMBLY	1	RN60169-1	<
20	CONNECTOR, 1" OD FL x 3/4" NPT, ELBOW	1	RN60087	<
21	OIL FILTER HEAD	1	RN28100	<
22	ELEMENT, OIL FILTER	1	RN28201	<
23	TEE - 3/4" NPT	1	VA10EF	<
24	NIPPLE, 3/4" NPT, CLOSE	1	VA13EAA	<
25	CONNECTOR, ELBOW, 3/4" OD x 3/4"NPT	1	VAA718	<
26	TUBE, BY-PASS TO OIL FILTER	1	OFE960	<
27	CONNECTOR, STRAIGHT, 3/4"OD x SAE12	1	RN52143	<
28	ADAPTOR, MALE - 3/4" NPT x SAE12	1	RN52139	<
29	THERMOWELL, M14 x 1.5	1	RN 18679	<
30	ELEMENT, SEPARATOR	1	RN27518	<
31	NIPPLE, 1/4 x SHORT	1	VA13BBB	<
32	TEE - 1/4"	3	VA10BF	<
33	CONNECTOR, STRAIGHT, QD	1	VAA702	<
34	CONNECTOR, ELBOW, QD	3	VAA703	<
35	TUBE, NYLON, BLACK, #11, 1/4" O.D.	-	VA1626	<
36	COMBINATION OIL FILL AND SIGHT GLASS	1	RN52171	<
37	CAP W/ VENT HOLE	1	CS741	<
38	NIPPLE, 1 1/4" NPT x 2 1/2"	1	VA017	<
39	VALVE, MINIMUM PRESSURE	1	RN42126-4	<
39A	KIT, SERVICE, MINIMUM PRESSURE VALVE	1	RN42126-1	<
40	CONNECTOR, ELBOW, QD, 3/8"NPT X 3/8"OD	1	VAA751	<
41	CONNECTOR, 1 1/4"OD FL x 1 1/4"NPT, ELBOW, LONG	1	RN60089	<
42	HOSE, 1 1/4"ODX31"	1	RN60144	<
43	TEE, 1 1/4"NPT	1	VA10GP	<
44	CONNECTOR, ELBOW, 3/4"OD x SAE12	2	RN52141	<
45	TUBE, SEPARATOR TANK TO BY-PASS	1	OFE995	<
46	VALVE, THERMO BY-PASS, 170° F	1	RN42403	<
46A	KIT, SERVICE, THERMO BY-PASS VALVE, 170° F	1	RN42403-1	<
47	ELBOW, STREET - 3/4" NPT	1	VA08EF	<
48	NIPPLE-3/4" x 11" LG.	1	VA13ERA	<
49	VALVE, BALL-3/4"	1	VV540	<
50				

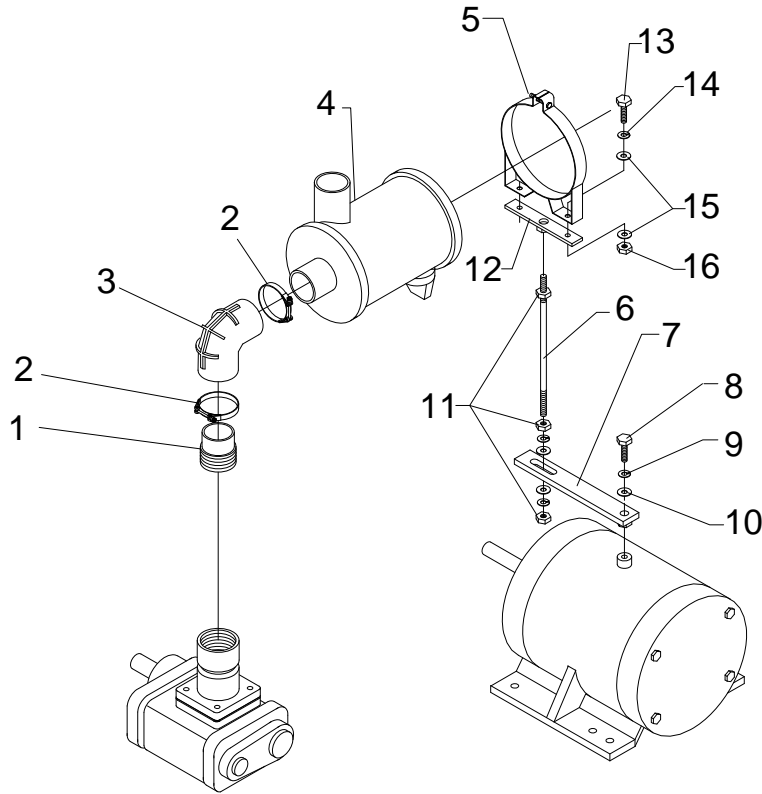
PARTS LIST FOR AIR AND OIL PIPING GROUP (REF. FIG. 2)

CAP273

ITEM NO.	DESCRIPTION	QTY.	R/S40 (B160)	R/S50 (B160)
51	NIPPLE – ¼" X CLOSE	3	VA13BAA	<
52	SWITCH, TEMPERATURE	2	RN18659	<
53	ELBOW, STREET – ½"	1	VA08DP	<
54	AIR GAUGE, 2 ½" DIA., LIQUID FILLED	1	RN30323	<
54A	AIR GAUGE, 2 ½" DIA., LIQUID FILLED	1	RN30322	<
55	NIPPLE, ¼" X 3"	1	VA13BEA	<
56	VALVE, MODULATING – ¼"	1	RN42613	<
57	NIPPLE, 1 ¼" NPT X 10"	1	VA13GQA	<
58	NIPPLE, 3/8" X CLOSE	1	VA13CAA	<
59	VALVE, CHECK – 3/8"	1	VV832	<
60	PLUG, 1/2"NPT.	1	VA01DR	<
61	VALVE, BLOW DOWN – ¼"	1	RN18428	<
62	NIPPLE/ORIFICE, BLOW DOWN	1	RN52149	<
63	VALVE, SHUTTLE – ¼"	1	RN42105	<
64	COMPRESSION CONNECTOR, ¼" NPT X ¼" OD, STRAIGHT	1	RN52151	<
65	STEEL TUBE, ¼" OD	1	OFE963	<
66	STEEL TUBE, ¼" OD	1	OFE968	<
67	NUT, ¼" OD, STEEL	2	VAA756	<
67A	SLEEVE, ¼" OD, STEEL	2	VAA757	<
68	UNION	1	VAA701	<
69	ORIFICE SCAVENGER COMPRESSION CONNECTOR	1	RN52131-3	<
70	SIGHT GLASS	1	RN52170	<
71	SEPARAOR TANK CROSS (NOT SHOWN)	1	RN10140	<
72	CONNECTOR, STRAIGHT, QUICK DISCONNECT	2	VAA747	<
73	TUBE, NYLON, BLACK, #11, 3/8" OD	-	VA1628	<
74	CONNECTOR, ELBOW, QUICK DISCONNECT	2	VAA748	<
75	BUSHING, 1 ¼" NPT X ¾" NPT	3	VA12GEF	<
76	VALVE, RELIEF – ½"	1		
	150 PSI (USED ON 100 PSI AND 125 PSI UNITS)		RN42815	<
	175 PSI (USED ON 150 PSI UNITS)		RN42816	<
	200 PSI (USED ON 175 PSI UNITS)		RN42817	<
77	BUSHING, 2" NPT X 1 ¼" NPT	2	VA12JGF	<
78	PRESSURE REGULATOR FOR 175 PSI UNIT (NOT SHOWN)	1	CY58-1	<
79	TEE, RUN – ¼" NPT X ¼" OD TUBE X ¼" OD TUBE	2	VAB746	<
80	WASHER, (USED ON VAA745)	1	VAA746	<
81	ADAPTER, 1/8" BSPP X ¼" NPTF	1	VAA745	<
82	BUSHING, 1 ½" NPT X 1 ¼" NPT	2	VA12HGP	<
83	CONNECTOR, ¼" ID X ¼" NPT MALE, ELBOW	1	RN52150-2	<
84	INSERT	2	VA1620	<
85	CONNECTOR, ¼" OD X ¼" NPT MALE, STRAIGHT (NOT SHOWN)	1	RN52150-3	<
86	BUSHING, ¾" NPT X ½" NPT	3	VA12EDG	<
87	NIPPLE, ½" NPT, CLOSE	3	VA13DAB	<
88	ELBOW, ½" NPT	3	VA06DB	<
89				
90	CONNECTOR, ½" (WATER HOSE)	2	RN60071	<
91	HOSE, ½" OD, MULTI-PURPOSE	3	RN60070	<
92	CLAMP, WORM DRIVE HOSE	2	RN60072	<
93				
	<u>KIT, WATER CONTROL VALVE ½" – STANDARD</u>		520082	<
95	WATER MODULATING VALVE, ½"	1	CF1552	<
96	WELL, WATER VALVE, ¾" X 4 ½"	1	CF1559	<
97	UNION, ¾" NPT	1	VAC883	<
98	NIPPLE, ¾" NPT, CLOSE	1	VA13EAB	<

PARTS LIST FOR HEAVY DUTY FILTER ASSEMBLY

CAP273



ITEM NO.	DESCRIPTION	QTY	R/S40B	R/S50B
	HEAVY DUTY FILTER KIT	1	VGG502	<
1	NIPPLE, 2 1/2 X 3 THREADS, ONE END	1	VAC864	<
2	CLAMP, T-BAR 3 1/2"	2	RN24076-5	<
3	ELBOW, 90 DEG, 3"	1	RN24076-4	<
4	FILTER, HEAVY DUTY ASSEMBLY	1	RN24076	<
5	BAND MOUNTING	1	RN24076-3	<
6	ROD, THREADED M16 X 2.0 LONG	1	VL2402	<
7	PLATE MOUNT	1	RN24076-9	<
8	BOLT, M16X 2.0 X 45mm	1	VH1440	<
9	WASHER, LOCK 16mm	4	VH1234	<
10	WASHER, FLAT 16mm	4	VH1238	<
11	NUT, HEX 16mm X 2.0	3	VH1531	<
12	MOUNT PLATE, HDF	1	RN24079-11	<
13	HHCS, 5/16-18 X 1, GRADE 5	2	VH12HH	<
14	LOCKWASHER, SPLIT, KANTLINK	2	VH35H	<
15	WASHER, FLAT CUT 5/16	4	VH32H	<
16	NUT, FINISHED HEX 5/16	2	VH15H	<

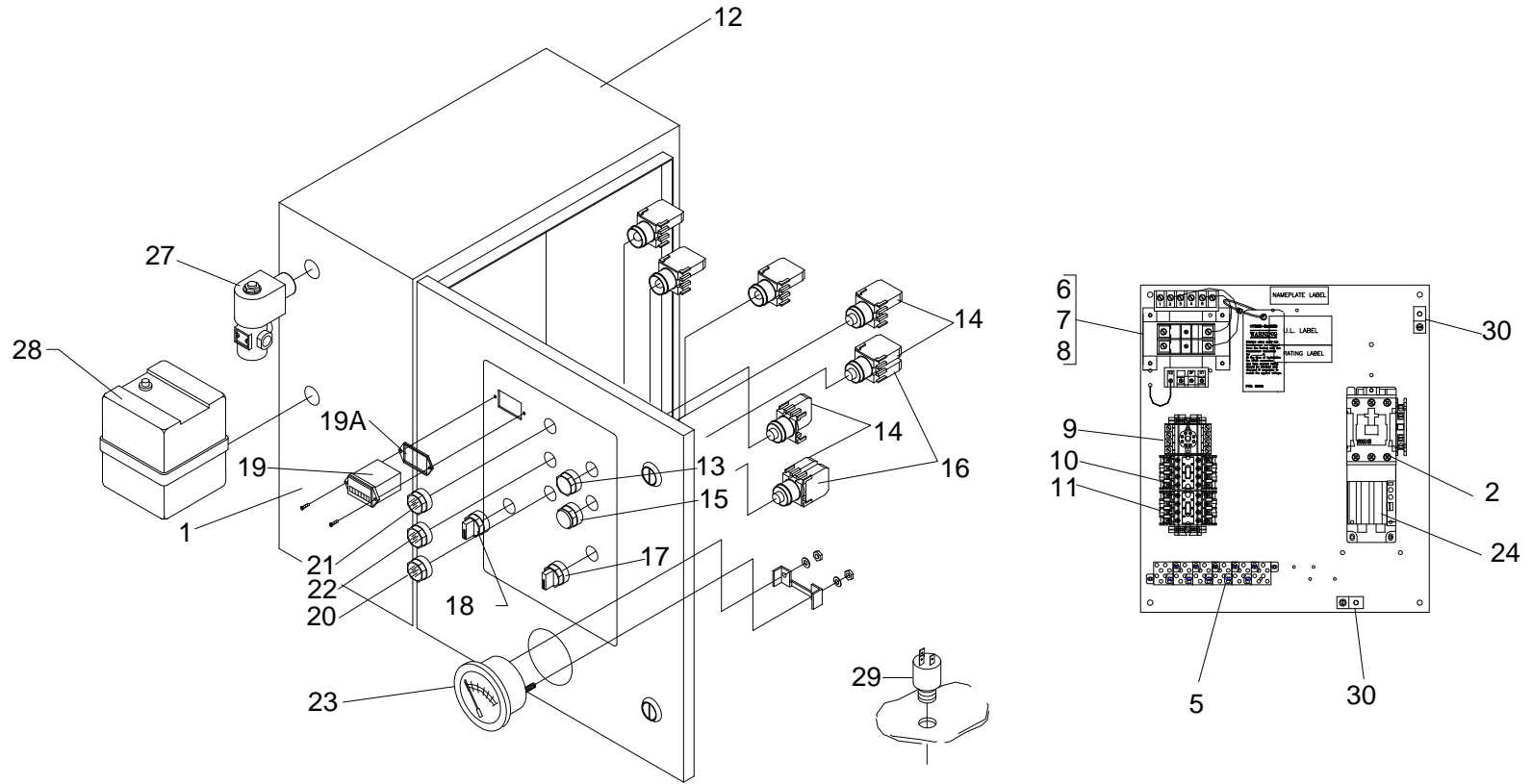


Figure 3: Electrical Components Group – (Open Unit)

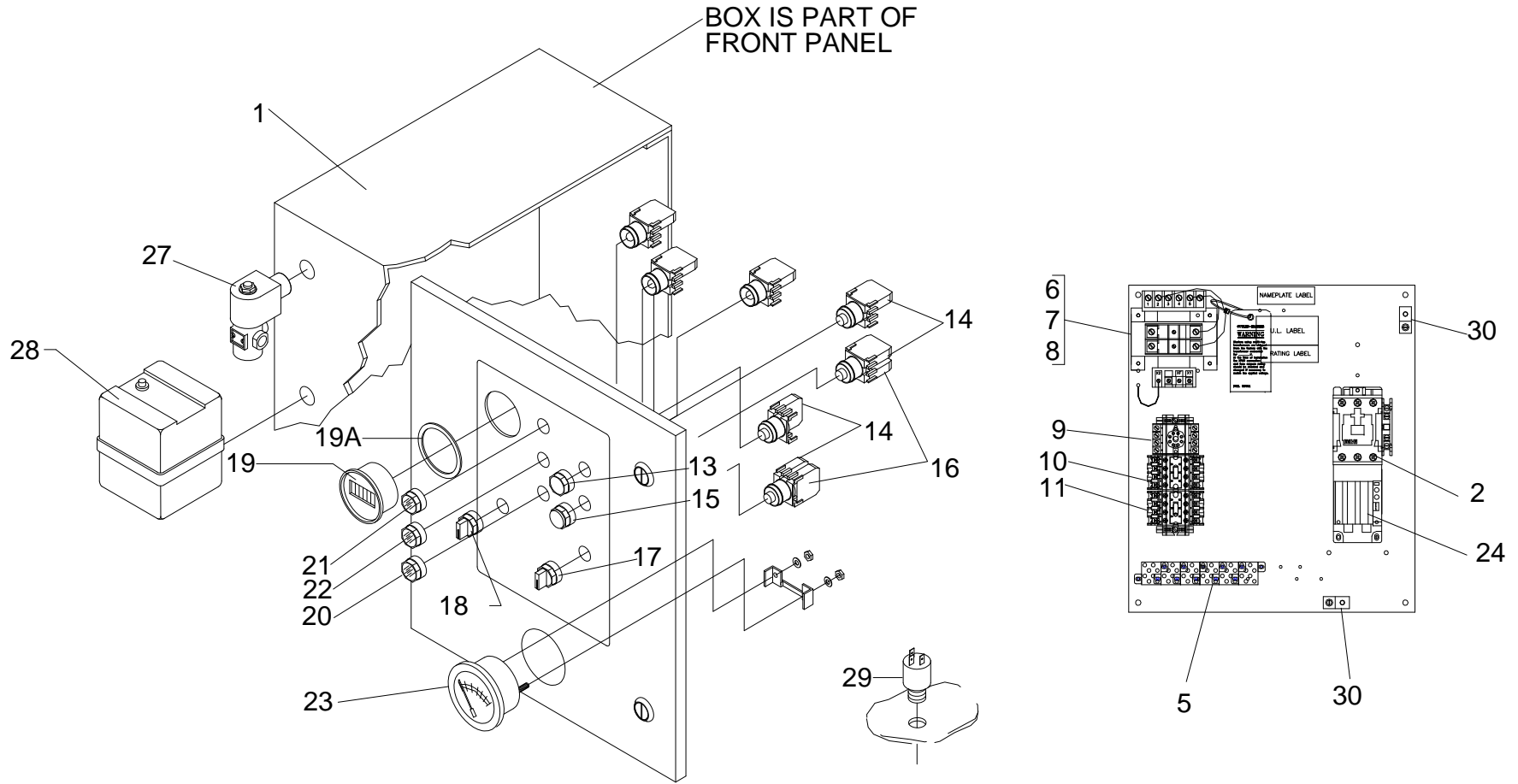


Figure 4: Electrical Components Group (Enclosed Unit)

PARTS LIST FOR ELECTRICAL COMPONENTS GROUP
OPEN & ENCLOSED (REF. FIG. 3 & 4)

CAP273

ITEM NO.	DESCRIPTION	QTY	R/S40B (ENCL)	R/S40B (OPEN)	R/S50B (ENCL)	R/S50B (OPEN)
1	CONTROL PANEL					
2	STARTER WITH INTERCHANGEABLE HEATERS					
	SIZE "K"					
	SIZE "N"					
	SIZE "S"					
			SEE TABLE 2		SEE TABLE 2	
5	TERMINAL BLOCK	6	1330042	<	<	<
6	TRANSFORMER, 150VA, FUSED, 200/230/246/575-120V	1	1330055	<	<	<
7	FUSE, TRANSFORMER, PRIMARY					
8	FUSE, TRANSFORMER, SECONDARY					
			SEE TABLE 2		SEE TABLE 2	
9	TIMER, 60 MIN., PLUG-IN	1	1330026	<	<	<
10	SOCKET	1	1330049	<	<	<
11	RELAY, 4 POLE, 120V, DPDT	2	1330062	<	<	<
12	ENCLOSURE	1	1330058	<	<	<
13	PUSH BUTTON STOP SWITCH (GREEN)	1	RN18116	<	<	<
14	N.O. CONTACT BLOCK	2	RN18118-2	<	<	<
15	PUSH BUTTON STOP SWITCH (RED)	1	RN18118	<	<	<
16	N.C. CONTACT BLOCK	2	RN18118-1	<	<	<
17	2 POSITION SELECTOR SWITCH (CONST/AUTO)	1	RN18104-9	<	<	<
18	2 POSITION SELECTOR SWITCH (LOAD/UNLOAD)	1	RN18104-7	<	<	<
19	HOUR METER	1	RN18250	1330048	<	<
19A	GASKET HOUR METER	1	RN18250-1	1230005	<	<
20	AMBER LIGHT (STAND BY)	1	RN18212	RN18218	<	<
21	RED LIGHT (STOP)	1	RN18210	RN18217	<	<
22	GREEN LIGHT (POWER ON)	1	RN18214	RN18219	<	<
23	TEMPERATURE GAUGE	1	RN18682	<	<	<
24	HEATER – MAIN (NOT SHOWN)		SEE TABLE 2		SEE TABLE 2	
27	VALVE, SOLENOID	1	RN18422	<	<	<
28	SWITCH, PRESSURE – 100 PSI UNITS	1	RN18133-2	<	<	<
	SWITCH, PRESSURE – 125 PSI UNITS	1	RN18133-2	<	<	<
	SWITCH, PRESSURE – 150 PSI UNITS	1	RN18133-4	<	<	<
	SWITCH, PRESSURE – 175 PSI UNITS	1	RN18133-4	<	<	<
29	ANTI-START PRESSURE SWITCH	1	RN18134	<	<	<
30	LUG, GROUNDING	2	VE779	<	<	<
31	LIGHT BULBS (NOT SHOWN)	3	N/A	RN18270	<	<
	WIRING DIAGRAM FOR FVM		610011	<	<	<

	ITEM NO	DESCRIPTION	QTY	200 VOLT	230 VOLT	460 VOLT	575 VOLT
R/S 40B	1	CONTROL PANEL	1	1330035	<	1330034	<
	2	SIZE "K" STARTER	1	N/A	N/A	RN18960	<
	2	SIZE "N" STARTER	1	RN18963	<	N/A	N/A
	2	SIZE "S" STARTER	1	N/A	N/A	N/A	N/A
	7	TRANSFORMER, 150VA.FUSED, 120V	1	1330075	<	<	1330055
	7	TRANSFORMER, 250VA,FUSED, 120V	1	N/A	N/A	N/A	N/A
	8	FUSE, TRANSFORMER, PRIMARY	2	RN18345-1	<	<	<
	9	FUSE, TRANSFORMER, SECONDARY	1	RN18351	<	<	<
	24	HEATER - MAIN	1	RN18990	RN18989	RN18982	RN18981
R/S 50B	1	CONTROL PANEL	1	N/A	320011	320014	<
	2	SIZE "K" STARTER	1	N/A	N/A	RN18960	<
	2	SIZE "N" STARTER	1	N/A	RN18963	N/A	N/A
	2	SIZE "S" STARTER	1	RN18860	N/A	N/A	N/A
	7	TRANSFORMER, 150VA.FUSED, 120V	1	N/A	1330075	<	<
	7	TRANSFORMER, 250VA,FUSED, 120V	1	1330076	N/A	N/A	N/A
	8	FUSE, TRANSFORMER, PRIMARY	2	VE385	RN18345-1	<	<
	9	FUSE, TRANSFORMER, SECONDARY	1	RN18354	RN18351	<	<
	24	HEATER - MAIN	1	RN18972	RN18990	RN18983	RN18982

TABLE 2: CONTROL PANEL, HEATERS AND FUSES

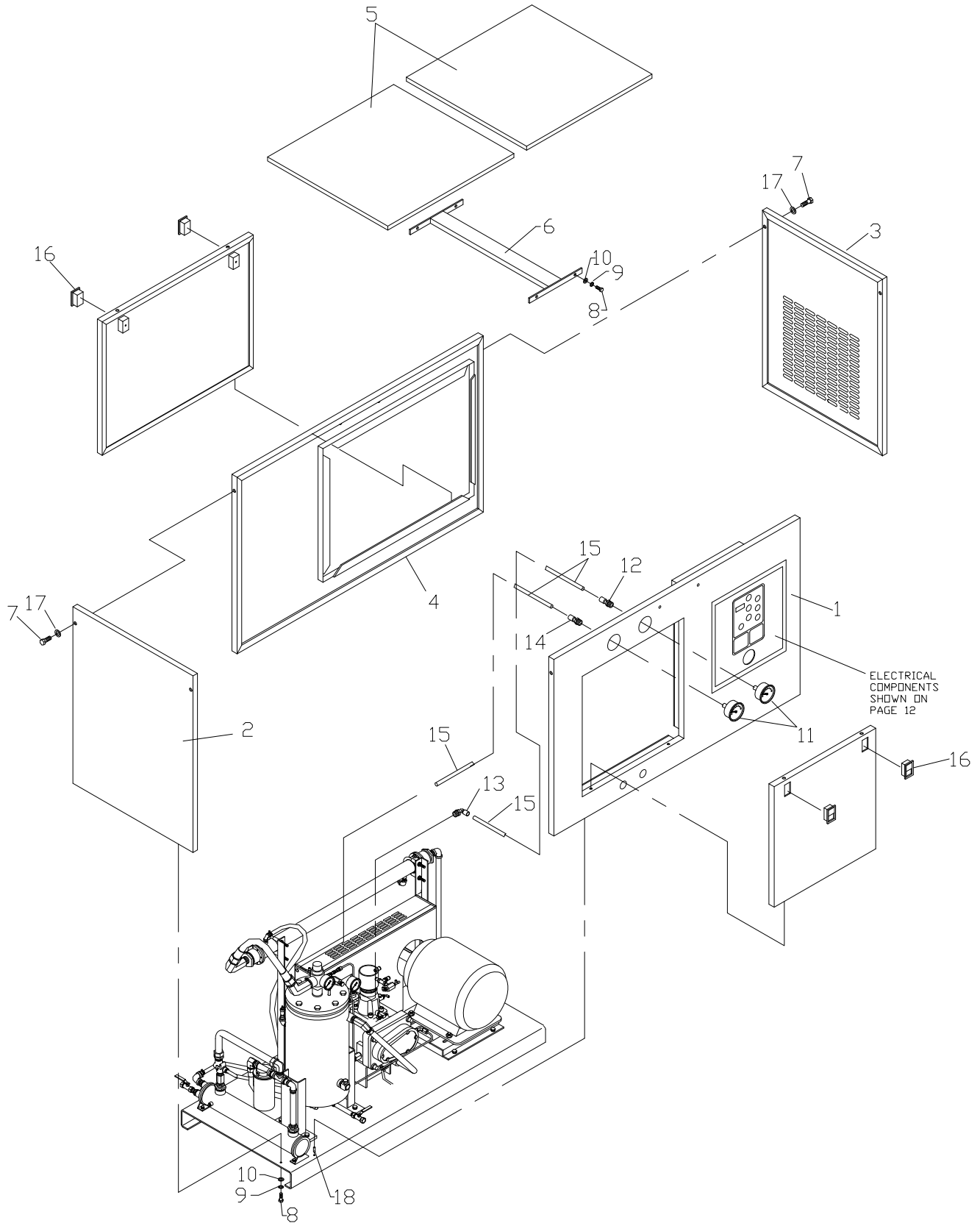


Figure 5: Enclosure Group

PARTS LIST FOR ENCLOSURE GROUP (REF. FIG. 6)

CAP273

ITEM NO.	DESCRIPTION	QTY.	R/S 40B & 50B
1	FRONT PANEL FRONT PANEL – NEMA 4 & 200V R/S 50 ONLY	1	RN10040-1A RN10040-7A
2	LEFT SIDE PANEL	1	RN10040-2A
3	RIGHT SIDE PANEL	1	RN10040-3A
4	BACK PANEL	1	RN10040-4A
5	TOP PANEL	2	RN10040-5A
6	TOP CROSS SUPPORT	1	RN10040-6
7	SCREW, SOCKET HEAD CAP, BUTTON HEAD, ¼-20 X 1 ½" LG	12	VH1737
8	SCREW, HEX HEAD CAP, ¼-20 X ¾" LG.	8	VH11FF
9	LOCKWASHER, ¼"	4	VH35F
10	WASHER, FLAT, ¼"	8	VH32F
11	GAUGE, AIR PRESSURE, 2 ½", LIQUID FILLED	2	RN30322
12	CONNECTOR, STRAIGHT, QUICK DISCONNECT, ¼" NPTF X ¼" O.D. TUBE	1	VAA787
13	CONNECTOR, ELBOW, COMPRESSION, ¼" NPT X ¼" O.D. TUBE	1	RN52150-2
14	CONNECTOR, STRAIGHT, COMPRESSION, ¼" NPT X ¼" O.D. TUBE	1	RN52150-7
15	TUBE, NYLON, BLACK, #11, ¼" O.D.	-	VA1626
16	LATCH, LIFT & TURN	4	CS914
17	LOCKWASHER, INTERNAL, ¼"	8	VH38F
18	PIN	4	CS910
19	INSERT (NOT SHOWN)	2	VA1620
21*	ENCLOSURE, NOISE SUPPRESSOR ASSEMBLY (NOT SHOWN)	2	RN10040-AA
22*	TOP COVER SOUND ENCLOSURE (NOT SHOWN)	2	RN10040-B

***DENOTES OPTIONAL ITEM**

ROUTINE MAINTENANCE KITS

4,000 HOUR KIT

MODEL	WORKING PRESSURE			
	100 PSI	125 PSI	150 PSI	175 PSI
R/S 40B	VGC540	<	<	<
R/S 50B	VGC540	<	<	<

KIT INCLUDES:

- (1) SEPARATOR ELEMENT
- (4) OIL FILTER ELEMENTS
- (2) HD MAIN ELEMENTS
- (2) HD SAFETY ELEMENTS

8,000 HOUR KIT

MODEL	WORKING PRESSURE			
	100 PSI	125 PSI	150 PSI	175 PSI
R/S 40B	VGf512	<	<	<
R/S 50B	VGf512	<	<	<

KIT INCLUDES:

- (2) SEPARATOR ELEMENT
- (8) OIL FILTER ELEMENTS
- (4) HD MAIN ELEMENTS
- (4) HD SAFETY ELEMENTS

12,000 HOUR KIT

MODEL	WORKING PRESSURE			
	100 PSI	125 PSI	150 PSI	175 PSI
R/S 40B	VGf584	<	VGf585	VGf584
R/S 50B	VGG519	<	VGf586	VGG519

KIT INCLUDES:

- (3) SEPARATOR ELEMENT
- (12) OIL FILTER ELEMENTS
- (6) AIR FILTER ELEMENTS
- (6) FILTER ELEMENTS SAFETY
- (1) INLET VALVE KIT
- (1) THERMO BY-PASS VALVE KIT
- (1) MINIMUM PRESSURE VALVE KIT
- (1) SET OF "V" BELTS

CURTIS – TOLEDO, INC.

1905 KIENLEN AVE., ST. LOUIS, MO 63133
TEL. (314) 383-1300 FAX (314) 381-1439
E-MAIL: INFO@CURTISTOLEDO.COM
www.curtistoledo.com