

CURTIS

R/S 30B, C, E

PARTS LIST

AIR END MODEL

B160, B170, E12+
AIR COOLED

LOT NUMBER:

R/S 30B	04
R/S 30C	02
R/S 30E	02

HOW TO ORDER PARTS

Give name and part number as shown in parts list and serial number. Serial number is on nameplate attached to control panel of unit.

IMPORTANT

Make a permanent record of the Model and Serial numbers of your machine here. You'll save time and expense by including this reference identification on replacement parts.

MODEL : _____

SER. NO.: _____

CURTIS-TOLEDO, INC.

1905 KIENLEN AVENUE, ST. LOUIS, MISSOURI 63133

Tel. (314) 383-1300

Fax (314) 381-1439

E-MAIL: INFO@CURTISTOLEDO.COM



DANGER

Air used for breathing or food processing must meet
OSHA 29CFR 1910.134 or FDA 21CFR 178.3570
Regulations. Failure to do so may cause severe injury
or death

INTRODUCTION

HOW TO USE THE PARTS LIST

Using the List of Illustrations obtain the figure number of the assembly in which your part is located. Go to the appropriate figure and locate your part on the illustration. Using the key number, find the part on the parts list.

LIST OF ILLUSTRATIONS

<u>Title</u>	<u>Page</u>
Major Components Group	2
Air And Oil Piping Group	6
Electrical Components Group – Open	10
Electrical Components Group - Enclosed	11
Tank and Base Group	14
Enclosure Group	18
Routine Maintenance Kits	20-21



WARNING

Personal injury and/or equipment damage will result by failing to pay attention to the vital safety information and instruction in the operating and instruction manual. Carefully read, understand, and retain all safety information and instructions before operating this unit.

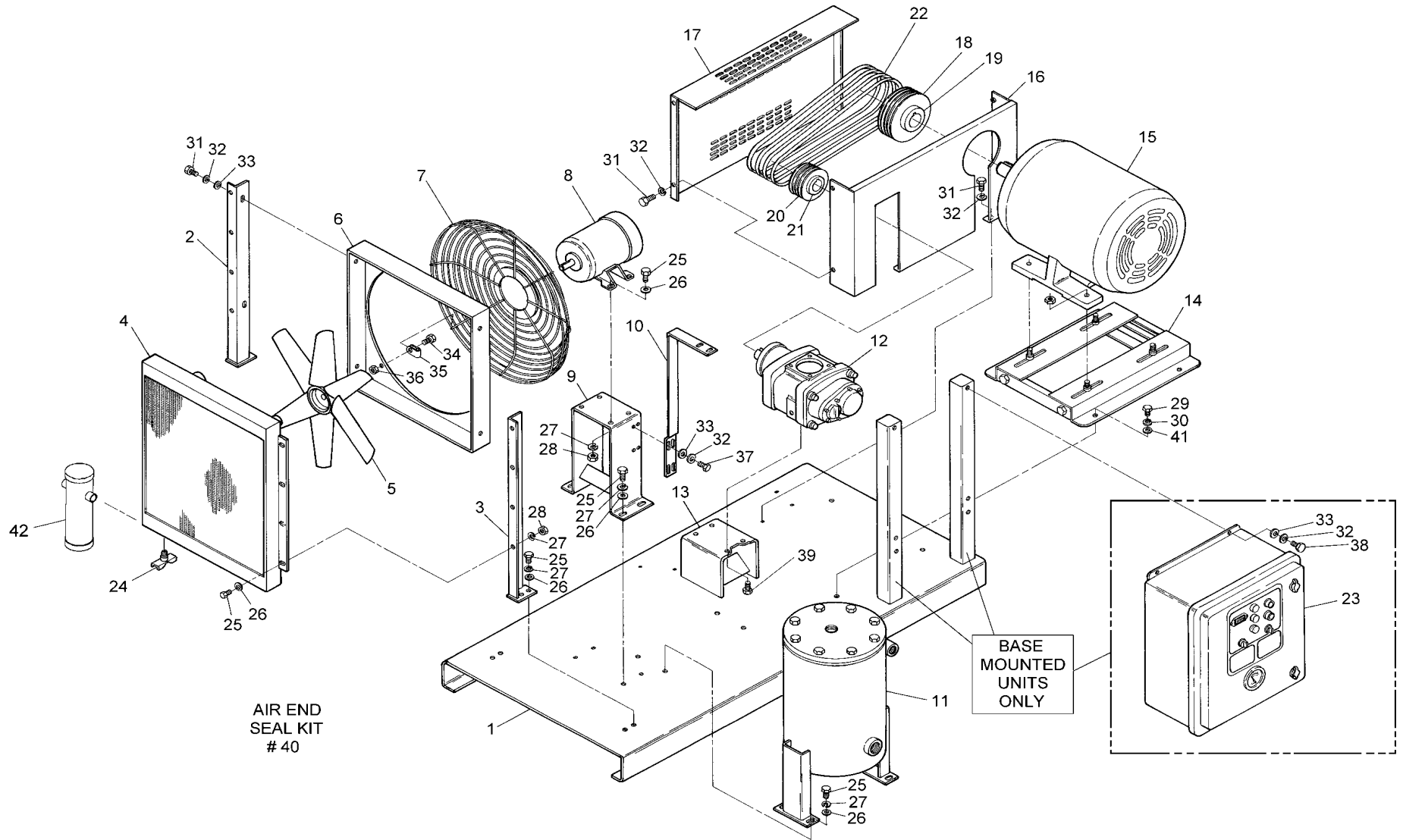


Figure 1: Major Components Group

PARTS LIST FOR MAJOR PARTS GROUP (REF. FIG. 1)

CAP-255

ITEM NO.	DESCRIPTION	QTY.	R/S 30B	R/S 30C	R/S 30E
1	BASE	1	RN10114-1	<	<
2	COOLER SUPPORT ASSEMBLY, L.H.	1	CS693	<	<
3	COOLER SUPPORT ASSEMBLY, R.H.	1	CS694	<	<
4	COOLER, AIR/OIL	1	RN32201	<	<
5	BLADE, FAN	1	RN32418-2	<	<
6	COVER, FAN	1	RN10455-2	<	<
7	GUARD, FAN	1	RN10455	<	<
* 8	MOTOR, FAN, 3 PHASE, 60 Hz, 200V, ODP	1	RN19004-7	<	<
	MOTOR, FAN, 3 PHASE, 60 Hz, 230/460V, ODP		RN19004	<	<
	MOTOR, FAN, 3 PHASE, 60 Hz, 575V, ODP		RN19004-8	<	<
9	MOUNT, FAN MOTOR	1	CS690	<	<
10	BRACKET, OIL FILTER	1	CS716	<	<
11	SEPARATOR, OIL/AIR	1	RN10214-2	<	<
12	AIR END	1	CS643	CS643-1	CS625-3
13	MOUNTING PLATE, AIR END	1	RN10127	<	RN10126
14	BASE, MOTOR	1	RN12025	<	<
* 15	MOTOR, MAIN, 3 PHASE, 60 Hz, 200V, ODP	1	RN19037-1	<	<
	MOTOR, MAIN, 3 PHASE, 60 Hz, 230/460V, ODP	1	RN19031	<	<
	MOTOR, MAIN, 3 PHASE, 60 Hz, 575V, ODP	1	RN19031-5	<	<
16	BELTGUARD, BACK	1	RN10510-4	RN10510-3	<
17	BELTGUARD, FRONT	1	RN10510-2	<	<
18	SHEAVE, MOTOR	SEE TABLE 1			
19	BUSHING, MOTOR				
20	SHEAVE, AIR END				
21	BUSHING, MOTOR				
22	BELT				
23	PANEL, CONTROL OPEN/ENCLOSED SIZE "K" SIZE "N"	1	1330000 / 1330039 1330001 / 1330040	< <	< <
24	DRAINCOCK	1	VV514	<	<
25	SCREW, HEX HEAD CAP, 5/16-18 x 3/4" LG.	28	VH12HF	<	<
26	WASHER, FLAT - 5/16"	28	VH32H	<	<
27	LOCKWASHER - 5/16"	28	VH35H	<	<
28	NUT, HEX - 5/16"	12	VH15H	<	<
29	SCREW, HEX HEAD CAP	4	N/A	<	<
30	LOCKWASHER	4	N/A	<	<
31	SCREW, HEX WASHER HEAD, 1/4-20 x 3/4" LG.	18	VH51FF	<	<
32	LOCKWASHER - 1/4"	18	VH35F	<	<
33	WASHER, FLAT - 1/4"	8	VH32F	<	<
34	SCREW, HEX HEAD CAP, 10-24 x 1/2" LG.	4	VH11DD	<	<
35	NYLON LOOP CLAMP	4	RN10455-1	<	<
36	NUT, HEX, 10-24	4	VH15D	<	<
37	SCREW, HEX HEAD CAP, 1/4-20 x 1" LG.	2	VH12FH	<	<
38	SCREW, HEX HEAD CAP, 1/4-20 x 7/8" LG.	4	VH12FG	<	<
39	BOLT, M12	4	VH1665	<	<
40	AIR END SEAL KIT	1	RN90437-1	<	RN90425-6
41	WASHER, FLAT	1	VH32P	<	<
42	MOISTURE SEPARATOR, (FOR BASE MOUNTED UNIT)	1	RN34122	<	<

* FOR MOTOR PART NUMBERS OTHER THAN STANDARD ODP, CONSULT FACTORY

	ITEM NO	DESCRIPTION	QTY	R/S 30B	R/S 30C	R/S 30E
				PART NO.	PART NO.	PART NO.
100 PSI	18	SHEAVE, MOTOR	1	RN14106	RN14101	RN14102
	19	BUSHING, MOTOR	1	RN14177-4	RN14176-3	<
	20	SHEAVE, AIR END	1	RN14109	RN14106	<
	21	BUSHING, AIR END	1	RN14177-2	<	RN14177-1
	22	BELT	4	RN14310-1	<	RN14315-1
125 PSI	18	SHEAVE, MOTOR	1	RN14102	RN14102	RN14107
	19	BUSHING, MOTOR	1	RN14176-3	RN14176-3	<
	20	SHEAVE, AIR END	1	RN14106	<	RN14103
	21	BUSHING, AIR END	1	RN14177-2	<	RN14176-1
	22	BELT	4	RN14308-1	<	RN14311-1
150 PSI	18	SHEAVE, MOTOR	1	RN14103	RN14107	RN14101
	19	BUSHING, MOTOR	1	RN14176-3	<	<
	20	SHEAVE, AIR END	1	RN14109	<	<
	21	BUSHING, AIR END	1	RN14177-2	<	RN14177-1
	22	BELT	4	RN14310-1	<	RN14315-1
175 PSI	18	SHEAVE, MOTOR	1	RN14101	RN14104	RN14101
	19	BUSHING, MOTOR	1	RN14176-3	RN14175-4	RN14176-3
	20	SHEAVE, AIR END	1	RN14109	RN14110	<
	21	BUSHING, AIR END	1	RN14177-2	<	RN14177-1
	22	BELT	4	RN14308-1	<	RN14315-1

Table 1: SHEAVES, BUSHING AND BELTS

NOTES

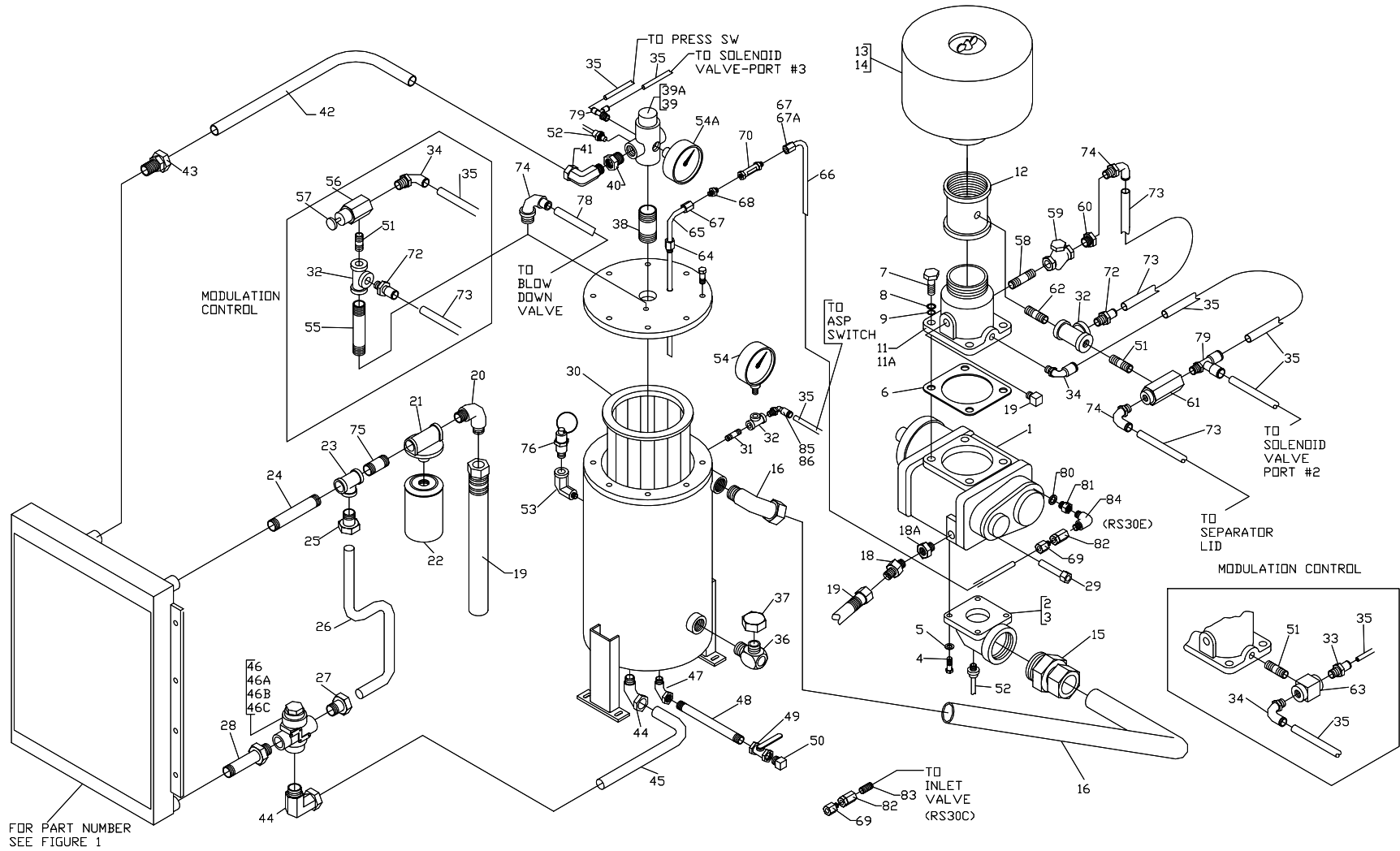


Figure 2: Air And Oil Piping Group

PARTS LIST FOR AIR AND OIL PIPING GROUP (REF. FIG. 2)

CAP-255

ITEM NO.	DESCRIPTION	QTY.	R/S 30B	R/S 30C	R/S 30E
1	AIR END	1	CS643	CS643-1	CS625-3
2	FLANGE, DISCHARGE	1	RN10682-2	<	CS906
3	“O” RING (NOT SHOWN)	1	RN10682-1	<	RN10672-1
4	BOLT, M12 x 1.75	4	VH1452	<	VH1442
5	LOCKWASHER, 12mm	4	VH1240	<	
6	GASKET, INLET VALVE	1	RN10674-3	<	RN10674-2
7	BOLT	4	VH1433	<	VH1435
8	LOCKWASHER	4	VH1240	<	VH1234
9	WASHER	4	VH1239	<	VH1238
11	VALVE, INLET	1	RN24582	<	<
11A	KIT, SERVICE, INLET VALVE	1	RN24570-2	<	<
12	COUPLING 2 1/2”	1	200000	<	<
13	ASSEMBLY, AIR FILTER	1	VA1145	<	<
14	ELEMENT, AIR FILTER	1	VA1144	<	<
15	CONNECTOR, STRAIGHT	1	RN52182	<	<
16	TUBE, STEEL	1	OFE992	<	<
17	CONNECTOR, ELBOW	1	RN52145-1	<	<
18	CONNECTOR	1	RN52148	<	RN60087
18A	ADAPTOR, 3/4 BSPT X 3/4 NPT	1	VAB747	<	N/A
19	ASSEMBLY, HOSE	1	RN60145	<	RN60122
20	CONNECTOR, 1” OD x 3/4” NPT, ELBOW	1	RN60087	<	<
21	OIL FILTER HEAD	1	RN28100	<	<
22	ELEMENT, OIL FILTER	1	RN28201	<	<
23	TEE - 3/4” NPT	1	VA10EF	<	<
24	NIPPLE, 3/4” NPT X 4 1/2” LG.	1	VA13EHA	<	<
25	CONNECTOR, STRAIGHT, 3/4” NPT x 3/4” OD	1	VAA717	<	<
26	TUBE, BY-PASS TO OIL FILTER	1	OFE958	<	<
27	CONNECTOR, STRAIGHT, 3/4” NPT x 1 1/16-12 UN	1	RN52143	<	<
28	ADAPTOR, MALE - 3/4” OD x 1 1/16-12 UN	1	RN52139	<	<
29	THERMOWELL, M14 x 1.5	1	RN18679	<	<
30	ELEMENT, SEPARATOR	1	RN27542	<	<
31	NIPPLE, 1/4 x SHORT	1	VA13BBB	<	<
32	TEE - 1/4”	3	VA10BF	<	<
33	CONNECTOR, STRAIGHT, QUICK DISCONNECT	1	VAA702	<	<
34	CONNECTOR, ELBOW, QUICK DISCONNECT	3	VAA703	<	<
35	TUBE, NYLON, BLACK, #11, 1/4” O.D.	-	VA1626	<	<
36	COMBINATION OIL FILL AND SIGHT GLASS	1	RN52171	<	<
37	CAP W/ VENT HOLE	1	CS741	<	<
38	NIPPLE, 1 1/4” NPT x 2 1/2” LG.	1	VA017	<	<
39	VALVE, MINIMUM PRESSURE	1	RN42126-4	<	<
39A	KIT, SERVICE, MINIMUM PRESSURE VALVE	1	RN42126-1	<	<
40	BUSHING, 1 1/4” NPT x 1” NPT	1	VA12GFP	<	<
41	CONNECTOR, 1” NPT x 1” OD., ELBOW	1	VA15FKP	<	<
42	TUBE, 1” OD	1	OFE956	<	<
43	CONNECTOR, 1” NPT X 1” OD., STRAIGHT	1	VA14FKP	<	<
44	CONNECTOR, ELBOW, 3/4” NPT x 1 1/16-12 UN	2	RN52141	<	<
45	TUBE, SEPARATOR TANK TO BY-PASS	1	OFE957	<	<
46	VALVE, THERMO BY-PASS, 170° F	1	RN42403	<	<
46A	KIT, SERVICE, THERMO BY-PASS VALVE, 170° F	1	RN42403-1	<	<
46B	VALVE, THERMO BY-PASS, 180° F (OPTIONAL)	1	RN42402	<	<

PARTS LIST FOR AIR AND OIL PIPING GROUP (REF. FIG. 2)

CAP-255

ITEM NO.	DESCRIPTION	QTY.	R/S30B	R/S30C	R/S30E
46C	KIT, SERVICE, THERMO BY-PASS VALVE, 180° F (OPTIONAL)	1	RN42402-1	<	<
47	ELBOW, STREET - 1/2" NPT	1	VA08DF	<	<
48	NIPPLE - 1/2" x 9 1/2" LG.	1	VA900	<	<
49	VALVE, BALL - 1/2"	1	VV538	<	<
50	PIPE PLUG - 1/2" NPT	1	VA01DR	<	<
51	NIPPLE - 1/4" x CLOSE	3	VA13BAA	<	<
52	SWITCH, TEMPERATURE	2	RN18659	<	<
53	ELBOW, STREET - 1/4"	2	VA08BF	<	<
54	AIR GAUGE, 2 1/2" DIA., LIQUID FILLED	1	RN30323	<	<
54A	AIR GAUGE, 2 1/2" DIA., LIQUID FILLED	1	RN30322	<	<
55	NIPPLE, 1/4" x 3" LG.	1	VA13BEA	<	<
56	VALVE, MODULATING - 1/4"	1	RN42613	<	<
57	THUMB SCREW	1	CS793	<	<
58	NIPPLE, 3/8" x CLOSE	1	VA13CAA	<	<
59	VALVE, CHECK - 3/8"	1	VV832	<	<
61	VALVE, BLOW DOWN - 1/4"	1	RN18428	<	<
62	NIPPLE/ORIFICE, BLOW DOWN	1	RN52149	<	<
63	VALVE, SHUTTLE - 1/4"	1	RN42105	<	<
64	COMPRESSION CONNECTOR, 1/4" NPT x 1/4 OD, STRAIGHT	2	RN52151	<	<
65	STEEL TUBE, 1/4" OD	1	OFE965A	<	<
66	STEEL TUBE, 1/4" OD	1	OFE991	OFE1011	OFE954
67	NUT, 1/4" OD, STEEL	2	VAA756	<	<
67A	SLEEVE, 1/4" OD, STEEL	2	VAA757	<	<
68	UNION	1	VAA701	<	<
69	ORIFICE SCAVENGER COMPRESSION CONNECTOR	1	RN52131-3	<	RN52131-2
70	SIGHT GLASS	1	RN52170	<	<
71	SEPARATOR TANK CROSS (NOT SHOWN)	1	RN10140	<	<
72	CONNECTOR, STRAIGHT, QUICK DISCONNECT	3	VAA747	<	<
73	TUBE, NYLON, BLACK, #11, 3/8" OD	-	VA1628	<	<
74	CONNECTOR, ELBOW, QUICK DISCONNECT	3	VAA748	<	<
75	NIPPLE, 3/4" NPT x SHORT	1	VA13ECA	<	<
76	VALVE, RELIEF - 1/4"	1			
	150 PSI (USED ON 100 PSI AND 125 PSI UNITS)		RN42810-1	<	<
	175 PSI (USED ON 150 PSI UNITS)		RN42811	<	<
	200 PSI (USED ON 175 PSI UNITS)		RN42812	<	<
78	PRESSURE REGULATOR FOR 175PSI UNIT (NOT SHOWN)	1	CY58-1	<	<
79	TEE, RUN - 1/4" NPT x 1/4" OD TUBE x 1/4" OD TUBE	2	VAB746	<	<
80	WASHER (USED FOR VAA745)	1	VAA746	N/A	VAA746
81	ADAPTER, 1/8" BSPP X 1/4" NPTF	1	VAA745	N/A	VAA745
82	VALVE, CHECK INLINE, 1/4"	1	N/A	VV834	<
83	NIPPLE, 1/4" SHORT	1	N/A	VA13BBA	N/A
84	ELBOW, 1/4", MALE	1	N/A	N/A	VAA754
85	CONNECTOR, 1/4" OD X 1/4" NPT, MALE, EL	1	RN52150-2	<	<
86	INSERT	2	VA1620	<	<
87	CONNECTOR, 1/4" OD X 1/8" NPT, MALE, STR.	1	RN52150-3	<	<

NOTES

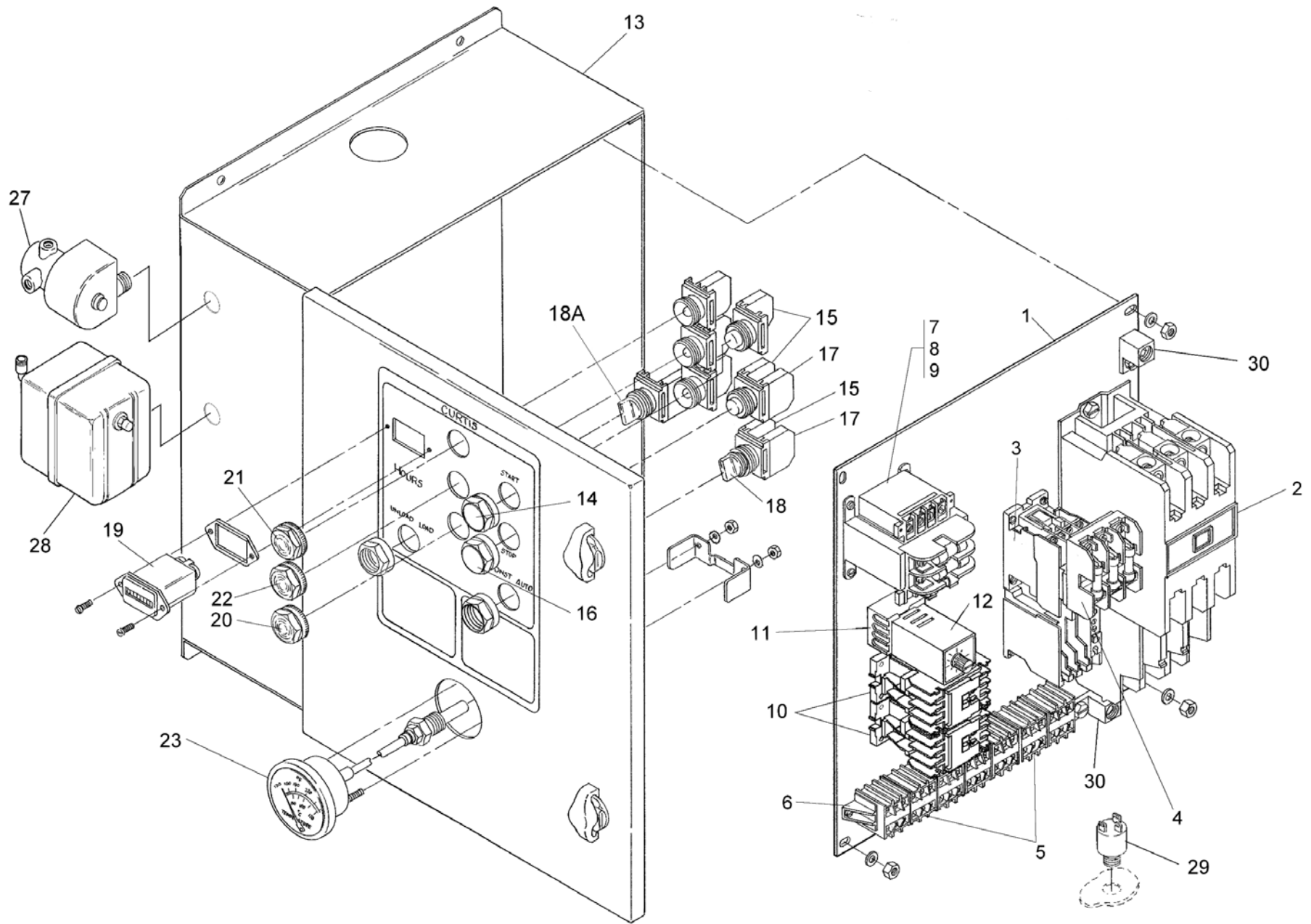


Figure 3: Electrical Components Group - Open

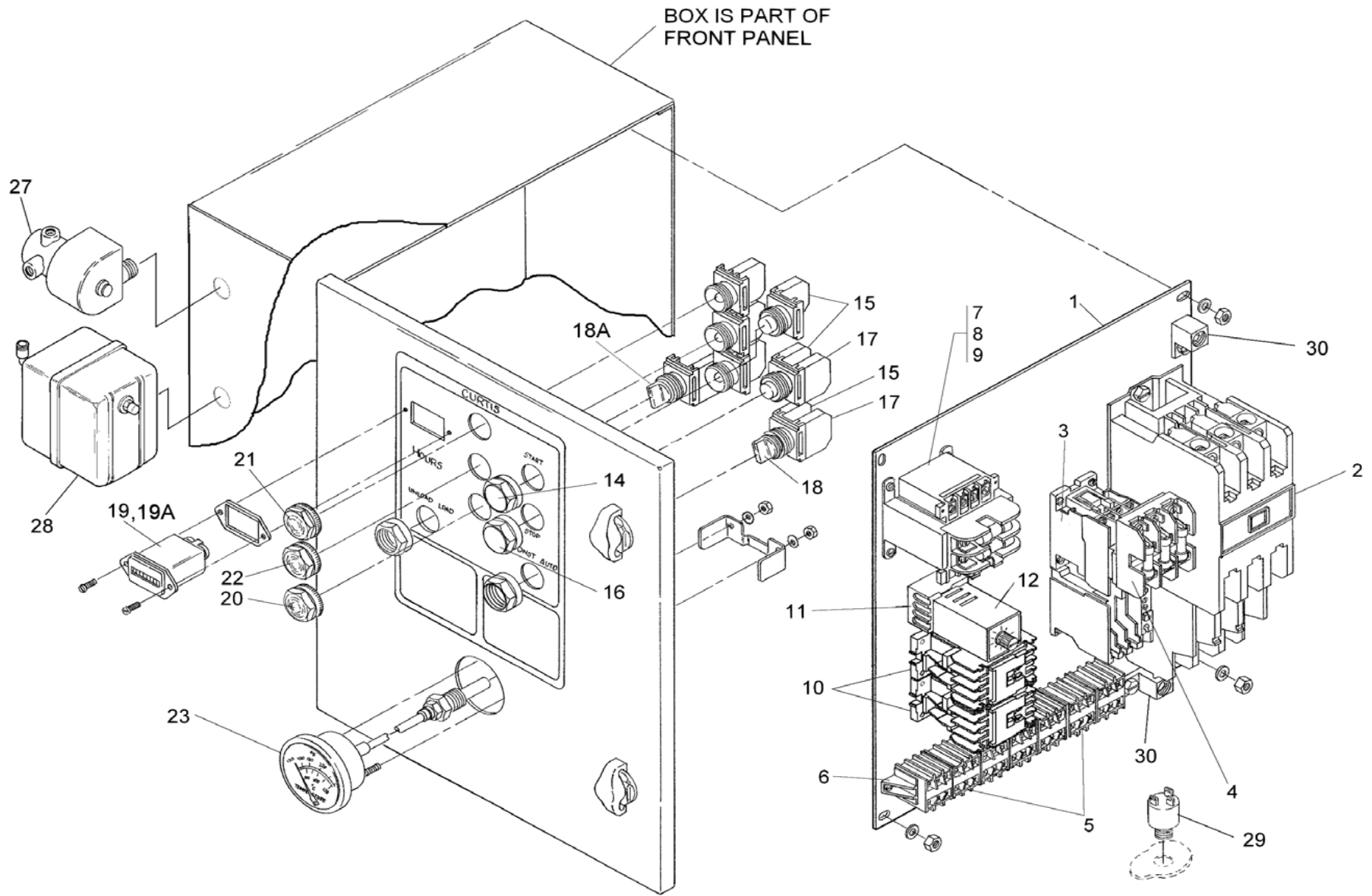


Figure 4: Electrical Components Group (Enclosed Unit)

PARTS LIST FOR ELECTRICAL COMPONENTS GROUP – OPEN & ENCLOSED (REF. FIG. 3 & 4)

CAP-255

ITEM NO.	DESCRIPTION	QTY.	R/S 30B,C,E(ENCL)	R/S 30B,C,E (OPEN)
1	CONTROL BACK PANEL			
2	STARTER WITH INTERCHANGEABLE HEATERS SIZE "K" SIZE "N"			SEE TABLE 2
3	STARTER SIZE "A" WITH INTERCHANGABLE HEATERS	1	RN18959	<
4	FUSE BLOCK - 30A, 600V	1	RN18314-1	<
5	TERMINAL BLOCK	6	1330042	<
6	TERMINAL BLOCK END STOP	1	1330043	<
7	TRANSFORMER, 150VA, FUSED, 200/230/246/575-120V	1	1330055	<
8	FUSE, TRANSFORMER, PRIMARY			SEE TABLE 2
9	FUSE, TRANSFORMER, SECONDARY			
10	RELAY, 4 POLE, 120V, DPDT	1	1330062	<
11	SOCKET	1	1330049	<
12	TIMER, 60 MIN., PLUG-IN	1	1330026	<
13	ENCLOSURE	1	1330058	<
14	PUSH BUTTON START SWITCH	1	RN18116	<
15	N.O. CONTACT BLOCK (USED W/ PUSH BUTTON STOP)	2	RN18118-2	<
16	PUSH BUTTON STOP SWITCH (RED)	1	RN18118	<
17	N.C. CONTACT	2	RN18118-1	<
18	2 POSITION SELECTOR SWITCH (CONST/AUTO)	1	RN18104-9	<
18A	2 POSITION SELECTOR SWITCH (LOAD/UNLOAD)	1	RN18104-7	<
19	HOURMETER	1	1330048	<
19A	HOURMETER	1	RN18250	<
20	AMBER LIGHT (STAND BY)	1	RN18212	RN18218
21	RED LIGHT (STOP)	1	RN18210	RN18217
22	GREEN LIGHT (POWER ON)	1	RN18214	RN18219
23	TEMPERATURE GAUGE	1	RN18682	<
24	HEATER – MAIN (NOT SHOWN)			
25	HEATER - FAN (NOT SHOWN)			SEE TABLE 2
26	FUSE, FAN (NOT SHOWN)			
27	VALVE, SOLENOID	1	RN18422	<
28	SWITCH, PRESSURE – 100 PSI UNITS	1	1240007	<
	SWITCH, PRESSURE – 125 PSI UNITS	1	1240007	<
	SWITCH, PRESSURE – 150 PSI UNITS	1	1240007	<
	SWITCH, PRESSURE – 175 PSI UNITS	1	1240007	<
29	ANTI-START PRESSURE SWITCH	1	RN18134	<
30	LUG, GROUNDING	2	VE779	<
31	LIGHT BULBS (NOT SHOWN)	3	N/A	RN18270
	WIRING DIAGRAM FOR FVM		610000	<
	WIRING DIAGRAM FOR Y-DELTA		CAB1665A	<

	ITEM NO	DESCRIPTION	QTY	200 VOLT	230 VOLT	460 VOLT	575 VOLT
R/S 30 B	1	CONTROL BACK PANEL	1	1330035	<	1330034	<
	2	SIZE "K" STARTER	1	N/A	N/A	RN18960	<
	2	SIZE "N" STARTER	1	RN18963	<	N/A	N/A
	7	TRANSFOMER, 150VA,FUSED, 120V	1	1330075	<	<	1330055
	8	FUSE, TRANSFORMER, PRIMARY	2	RN18345-1	<	<	<
	9	FUSE, TRANSFORMER, SECONDARY	1	RN18351	<	<	<
	24	HEATER - MAIN	1	RN18988	RN18988	RN18981	RN18980
	25	HEATER - FAN	1	RN18972	<	RN18970	<
	26	FUSE, FAN	3	RN18316-1	VE383	VE382	RN18344-1

Table 2: CONTROL PANEL, HEATERS AND FUSES

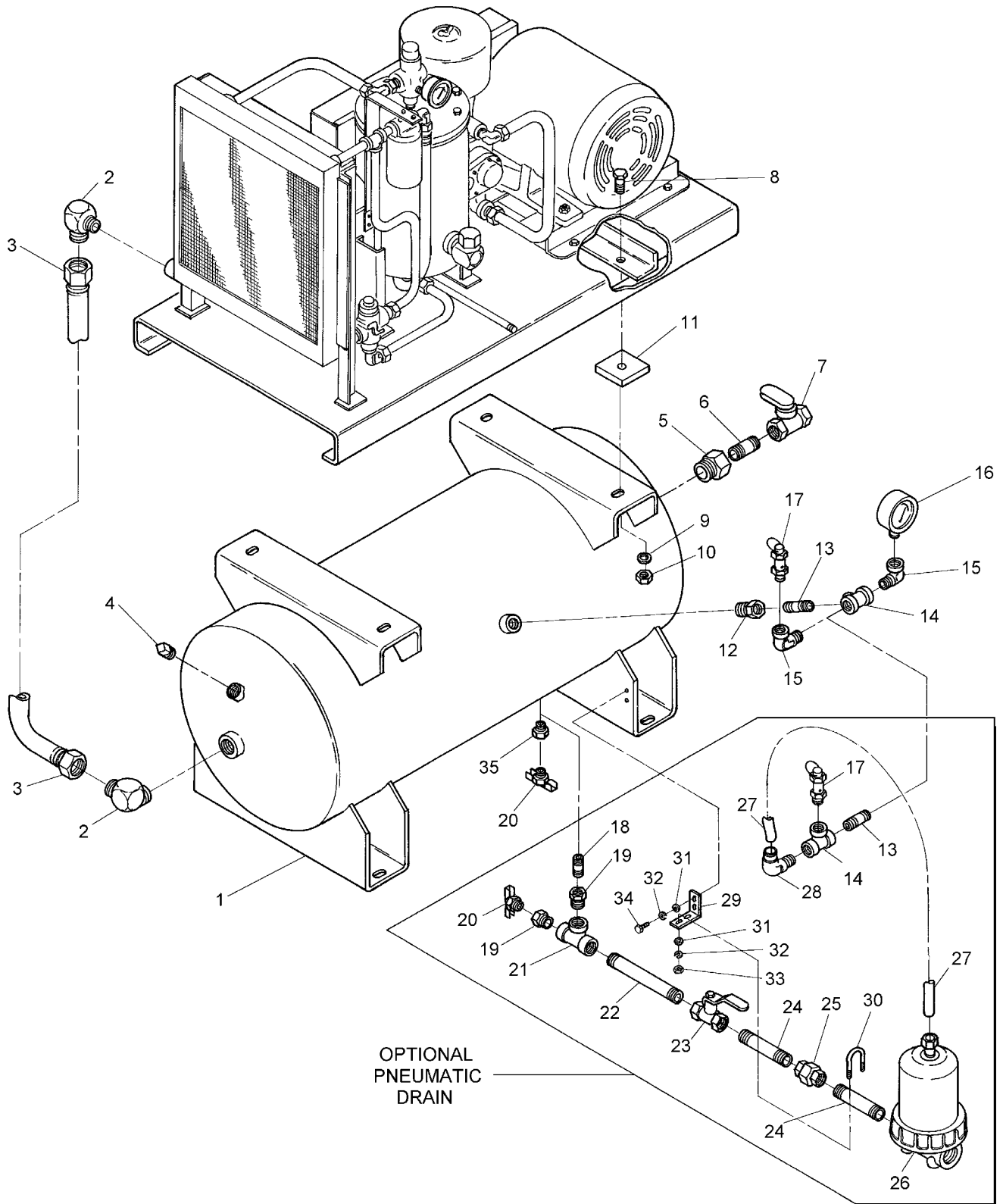


Figure 5: Tank And Base Group

PARTS LIST FOR TANK AND BASE GROUP (REF. FIG. 5)

CAP-255

ITEM NO.	DESCRIPTION	QTY.	R/S 30B,C,E
1	TANK ASSEMBLY 80 GALLON 120 GALLON	1	OFD243
2	MALE ELBOW, 90 DEG. - 1 1/4" x 1"	2	VAA728
3	HOSE ASSEMBLY - 1 1/8" ID x 31" LG.	1	RN60144
4	PIPE PLUG - 1"	1	VA02FR
5	BUSHING - 2" x 1"	2	VA12JFA
6	NIPPLE, SHORT, BLACK - 1" x 2"	1	VA13FCA
7	BALL VALVE - 1"	1	VV532
8	SCREW, HEX HEAD CAP, 1/2-13 UNC x 2" LG, GR. 5	4	VH12PP
9	WASHER - 1/2"	4	VH33P
10	NUT, SELF-LOCKING, 1/2-13	4	VH20P
11	ISOLATOR PAD	4	RN60256
12	BUSHING - 3/8" x 1/4"	1	VA12CBA
13	NIPPLE, BLACK - 1/4"	1	VA13BAB
14	TEE - 1/4"	1	VA10BF
15	ELBOW, STREET, BLACK, 90 DEG. - 1/4"	2	VA08BF
16	GAUGE, AIR PRESSURE	1	RN30320
17	RELIEF VALVE - 1/4"	1	RN42810
18	NIPPLE, GALVANIZED - 1/2"	SEE	
19	BUSHING, 3/8" X 1/2"	TABLE 3	
20	DRAIN COCK - 1/4"	1	VV514
21	TEE, BLACK - 3/8"	SEE TABLE 3	
22	NIPPLE, BLACK-3/8" X 5" LG.		
23	BALL VALVE - 3/8"		
24	NIPPLE, GALVANIZED - 3/8" X 3" LG.		
25	UNION, GALVANIZED - 3/8"		
26	DRAIN, AUTOMATIC CONDENSATE - SNAP TRAP		
27	TUBING, NYLON, WHITE - 1/4" OD		
28	ELBOW, 1/4" NPT X 1/4" OD X 1/4" OD		
29	BRACE, AUTO DRAIN PIPING		
30	"U" BOLT #401		
31	WASHER, CUT, FLAT - 1/4"		
32	LOCKWASHER - 1/4"		
33	NUT, HEX, 1/4-20		
34	SCREW, HEX HEAD CAP, 1/4-20 X 3/4" LG., GR. 5		
35	BUSHING - 1/2" x 1/4"	1	VA12DBP
36*	STREET ELBOW, 1"NPT (NOT SHOWN)	1	VA08FF
37*	NIPPLE, 1"NPT X 3" LG (NOT SHOWN)	1	VA13FEA
38*	COUPLING, 1" NPT (NOT SHOWN)	1	VA16FA

* USED ONLY FOR ENCLOSED UNIT

ITEM NO	DESCRIPTION	80 GALLON		120 GALLON		200 GALLON	
		QTY	PART NO.	QTY	PART NO.	QTY	PART NO.
100 PSI	13	1	VA13BAA	1	<	1	<
	14	1	VA10BF	1	<	1	<
	18	1	VA13DAB	1	<	1	<
	19	1	VA12DCP	1	<	1	<
	21	1	VA10CF	1	<	1	<
	22	1	VA13CGB	1	VA13CJA	1	VA13CNB
	23	1	VV539	1	<	1	<
	24	2	VA13CCB	2	VA13CEB	2	<
	25	1	VAC806	1	<	1	<
	26	1	VA539	1	<	1	<
	27	-	VA1601	-	<	-	<
	28	1	VAA703	1	<	1	<
	29	1	OFE950	1	<	1	<
	30	1	VH2202	1	<	1	<
	31	4	VH32F	4	<	4	<
	32	4	VH35F	4	<	4	<
33	2	VH15F	2	<	2	<	
34	2	VH12FF	2	<	2	<	
125 PSI	13	1	VA13BAA	1	<	1	<
	14	1	VA10BF	1	<	1	<
	18	1	VA13DAB	1	<	1	<
	19	1	VA12DCP	1	<	1	<
	21	1	VA10CF	1	<	1	<
	22	1	VA13CGB	1	VA13CJA	1	VA13CNB
	23	1	VV539	1	<	1	<
	24	2	VA13CCB	2	VA13CEB	2	<
	25	1	VAC806	1	<	1	<
	26	1	VA539	1	<	1	<
	27	-	VA1601	-	<	-	<
	28	1	VAA703	1	<	1	<
	29	1	OFE950	1	<	1	<
	30	1	VH2202	1	<	1	<
	31	4	VH32F	4	<	4	<
	32	4	VH35F	4	<	4	<
33	2	VH15F	2	<	2	<	
34	2	VH12FF	2	<	2	<	
150 PSI	13	1	VA13BAA	1	<	1	<
	14	1	VA10BF	1	<	1	<
	18	1	VA13DAB	1	<	1	<
	19	1	VA12DCP	1	<	1	<
	21	1	VA10CF	1	<	1	<
	22	1	VA13CGB	1	VA13CJA	1	VA13CNB
	23	1	VV539	1	<	1	<
	24	2	VA13CCB	2	VA13CEB	2	<
	25	1	VAC806	1	<	1	<
	26	1	VA539	1	<	1	<
	27	-	VA1601	-	<	-	<
	28	1	VAA703	1	<	1	<
	29	1	OFE950	1	<	1	<
	30	1	VH2202	1	<	1	<
	31	4	VH32F	4	<	4	<
	32	4	VH35F	4	<	4	<
33	2	VH15F	2	<	2	<	
34	2	VH12FF	2	<	2	<	
175 PSI	13	1	VA13BAA	1	<	1	<
	14	1	VA10BF	1	<	1	<
	18	1	VA13DAB	1	<	1	<
	19	1	VA12DCP	1	<	1	<
	21	1	VA10CF	1	<	1	<
	22	1	VA13CGB	1	VA13CJA	1	VA13CNB
	23	1	VV539	1	<	1	<
	24	2	VA13CCB	2	VA13CEB	2	<
	25	1	VAC806	1	<	1	<
	26	1	VA535	1	<	1	<
	27	-	VA1601	-	<	-	<
	28	1	VAA703	1	<	1	<
	29	1	OFE950	1	<	1	<
	30	1	VH2202	1	<	1	<
	31	4	VH32F	4	<	4	<
	32	4	VH35F	4	<	4	<
33	2	VH15F	2	<	2	<	
34	2	VH12FF	2	<	2	<	

Table 3: OPTIONAL PNEUMATIC DRAIN

NOTES

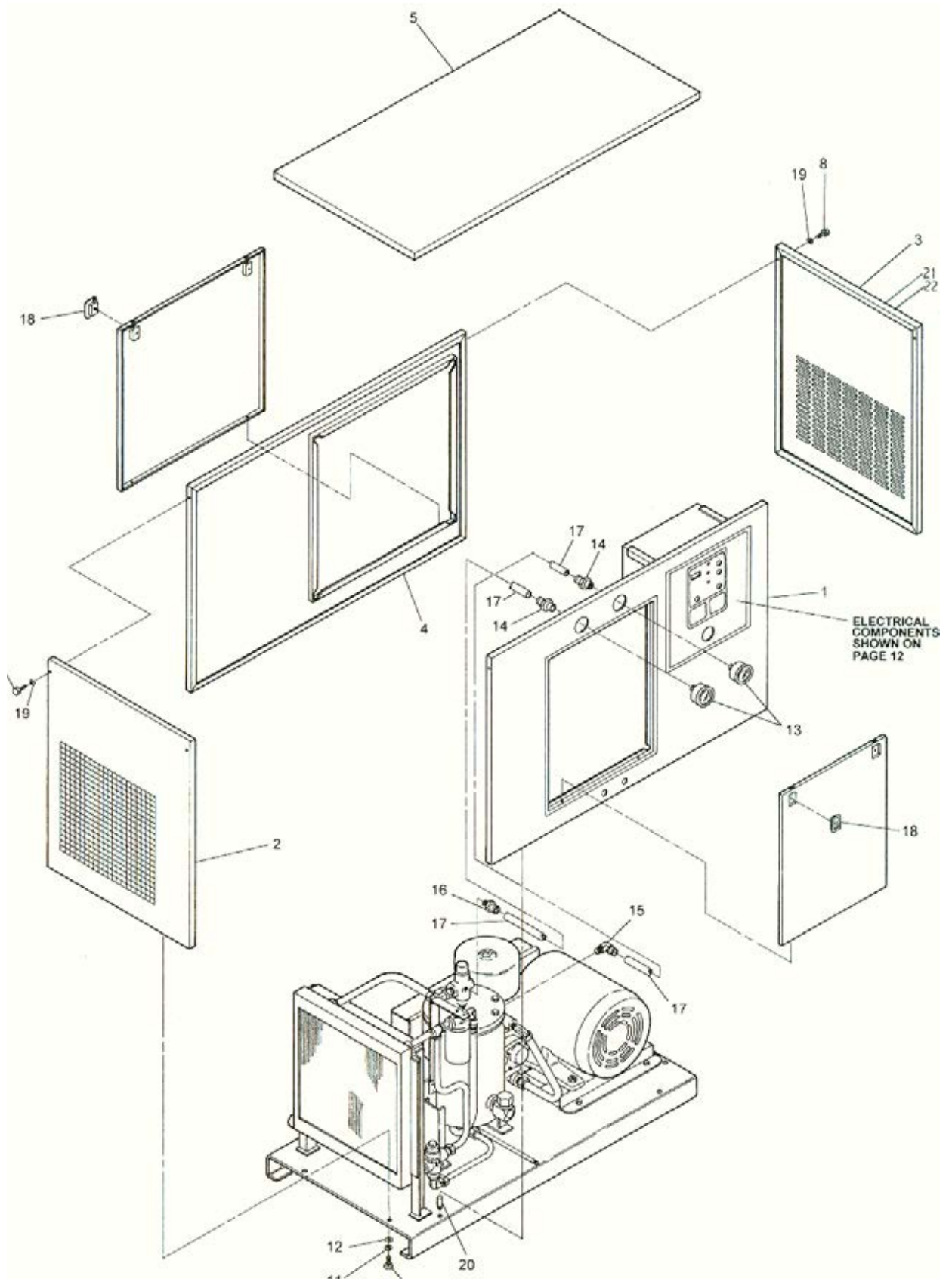


Figure 6: Enclosure Group

PARTS LIST FOR ENCLOSURE GROUP (REF. FIG. 6)

CAP-255

ITEM NO.	DESCRIPTION	QTY.	R/S 30B,C,E
1	FRONT PANEL	1	RN10020-1A
2	LEFT SIDE PANEL	1	RN10020-2AA
3	RIGHT SIDE PANEL	1	RN10020-3A
4	BACK PANEL	1	RN10020-7A
5	TOP PANEL	1	RN10020-5A
6	SUPPORT BRACE FOR FRONT PANEL - R.H. (NOT SHOWN)	1	CS679
7	SUPPORT BRACE FOR FRONT PANEL - L.H. (NOT SHOWN)	1	CS758
8	SCREW, SOCKET HEAD CAP, BUTTON HEAD, 1/4-20 x 1 1/2" LG.	4	VH1737
9	SCREW, HEX HEAD CAP, 1/4-20 x 1/2" LG. (NOT SHOWN)	8	VH12FD
10	SCREW, HEX HEAD CAP, 1/4-20 x 1" LG.	4	VH12FH
11	LOCKWASHER - 1/4"	8	VH35F
12	WASHER, FLAT - 1/4"	8	VH32F
13	GAUGE, AIR PRESSURE, 2 1/2" DIA.	2	RN30322
14	CONNECTOR, STRAIGHT, QD, 1/4" NPTF x 1/4" OD TUBE	2	VAA787
15	CONNECTOR, ELBOW, QD, 1/4" NPT x 1/4" OD TUBE	1	VAA703
16	CONNECTOR, STRAIGHT, QD, 1/4" NPT x 1/4" OD TUBE	1	VAA702
17	TUBE, NYLON, BLACK, #11	-	VA1626
18	PADDLE HANDLE	4	CS681
19	LOCKWASHER, INTERNAL - 1/4"	4	VH38F
20	PIN	4	CS910
21	* ENCLOSURE, NOISE SUPPRESSOR ASSEMBLY (NOT SHOWN)	2	RN10020-AA
22	* TOP COVER SOUND ENCLOSURE (NOT SHOWN)	2	RN10020-B

* DENOTES OPTIONAL ITEM

ROUTINE MAINTENANCE KITS

4,000 HOUR KIT

MODEL	WORKING PRESSURE			
	100 PSI	125 PSI	150 PSI	175 PSI
R/S 30B,C,E	VGB513	<	<	<

KIT INCLUDES

- (1) SEPARATOR ELEMENT
- (4) OIL FILTER ELEMENTS
- (2) AIR FILTER ELEMENTS

4,000 HOUR KIT (FOR UNITS WITH HEAVY DUTY INLET FILTER)

MODEL	WORKING PRESSURE			
	100 PSI	125 PSI	150 PSI	175 PSI
R/S 30B,C,E	VGC539	<	<	<

KIT INCLUDES:

- (1) SEPARATOR ELEMENT
- (4) OIL FILTER ELEMENTS
- (2) HD MAIN ELEMENTS
- (2) HD SAFETY ELEMENTS

8,000 HOUR KIT

MODEL	WORKING PRESSURE			
	100 PSI	125 PSI	150 PSI	175 PSI
R/S 30B,C,E	VGB514	<	<	<

KIT INCLUDES:

- (2) SEPARATOR ELEMENT
- (8) OIL FILTER ELEMENTS
- (4) AIR FILTER ELEMENTS

8,000 HOUR KIT (FOR UNITS WITH HEAVY DUTY INLET FILTER)

MODEL	WORKING PRESSURE			
	100 PSI	125 PSI	150 PSI	175 PSI
R/S 30B,C,E	VGf511	<	<	<

KIT INCLUDES:

- (2) SEPARATOR ELEMENT
- (8) OIL FILTER ELEMENTS
- (4) HD MAIN ELEMENTS
- (4) HD SAFETY ELEMENTS

12,000 HOUR KIT

MODEL	WORKING PRESSURE			
	100 PSI	125 PSI	150 PSI	175 PSI
R/S 30B,C	VGf521	VGf575	VGf521	VGf575
R/S 30E	VGD534	VGD535	VGD534	<

KIT INCLUDES:

- (3) SEPARATOR ELEMENT
- (12) OIL FILTER ELEMENTS
- (6) AIR FILTER ELEMENTS
- (1) INLET VALVE KIT
- (1) THERMO BY-PASS VALVE KIT
- (1) MINIMUM PRESSURE VALVE KIT
- (1) SET OF "V" BELTS

ROUTINE MAINTENANCE KITS (CON'T)

12,000 HOUR KITS (FOR UNITS WITH HEAVY DUTY INLET FILTER)

MODEL	WORKING PRESSURE			
	100 PSI	125 PSI	150 PSI	175 PSI
R/S 30B,C	VGf583	VGf582	VGf583	VGf582
R/S30E	VGf594	VGf595	VGf594	<

KIT INCLUDES:

- (3) SEPARATOR ELEMENT
- (12) OIL FILTER ELEMETS
- (6) AIR FILTER ELEMENTS,MAIN
- (6) AIR FILTER ELEMENTS,SAFETY
- (1) INLET VALVE KIT
- (1) THERMO BY-PASS VALVE KIT
- (1) MINIMUM PRESSURE VALVE KIT
- (1) SET OF "V" BELTS

NOTES

NOTES

NOTES

NOTES

CURTIS – TOLEDO, INC.

1905 KIENLEN AVE., ST. LOUIS, MO 63133
TEL. (314) 383-1300 FAX (314) 381-1439
E-MAIL: CURTISCOMP@AOL.COM