

# CURTIS

## *R/S 30, 30B, 30A, 30A1*

# PARTS LIST

### AIR END MODEL

E12, B101, B160, E6  
WATERCOOLED

#### LOT NUMBER:

R/S 30	01
R/S 30A	01
R/S 30B	01
R/S 30A1	01

### HOW TO ORDER PARTS

Give name and part number as shown in parts list and serial number. Serial number is on nameplate attached to control panel of unit.

### IMPORTANT

Make a permanent record of the Model and Serial numbers of your machine here. You'll save time and expense by including this reference identification on replacement parts.

MODEL : \_\_\_\_\_

SER. NO.: \_\_\_\_\_

## CURTIS-TOLEDO, INC.

1905 KIENLEN AVENUE, ST. LOUIS, MISSOURI 63133

Tel. (314) 383-1300

Fax (314) 381-1439

E-MAIL: [info@curtistoledo.com](mailto:info@curtistoledo.com)



# **DANGER**

Air used for breathing or food processing must meet  
OSHA 29CFR 1910.134 or FDA 21CFR 178.3570  
Regulations. Failure to do so may cause severe injury  
or death

# INTRODUCTION

## HOW TO USE THE PARTS LIST

Using the List of Illustrations obtain the figure number of the assembly in which your part is located. Go to the appropriate figure and locate your part on the illustration. Using the key number, find the part on the parts list.

## LIST OF ILLUSTRATIONS

<u>Title</u>	<u>Page</u>
Major Components Group	2
Air And Oil Piping Group	6
Electrical Components Group – Open	10
Electrical Components Group - Enclosed	11
Tank and Base Group	14
Enclosure Group	17



## **WARNING**

Personal injury and/or equipment damage will result by failing to pay attention to the vital safety information and instruction in the operating and instruction manual. Carefully read, understand, and retain all safety information and instructions before operating this unit.

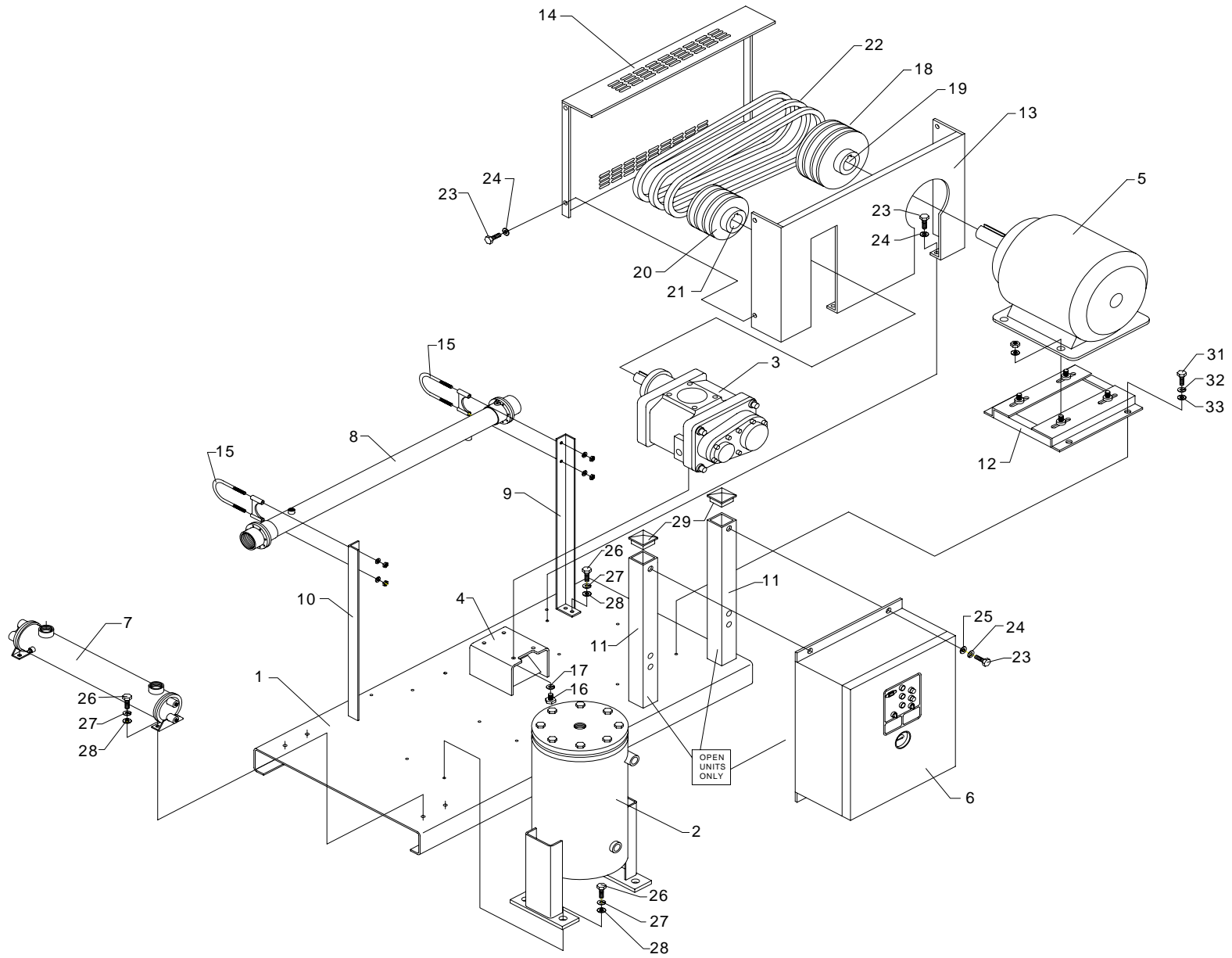


Figure 1: Major Components Group

## PARTS LIST FOR MAJOR PARTS GROUP (REF. FIG. 1)

ITEM NO.	DESCRIPTION	QTY.	R/S 30B (B160)	R/S 30 (E12)	R/S 30A1 (E6)	R/S 30A (B101)
1	BASE	1	RN10114-1	<	<	<
2	SEPARATOR, OIL/AIR	1	RN10214-2	<	<	<
3	AIR END	1	CS643	CS625	CS624	CS642
4	MOUNTING PLATE, AIR END	1	RN10127	RN10126	RN10147	RN10147
5	MOTOR, MAIN, 3 PHASE, 60 Hz, 200V, ODP	1	RN19037-1	<	<	<
	MOTOR, MAIN, 3 PHASE, 60 Hz, 230/460V, ODP	1	RN19031	<	<	<
	MOTOR, MAIN, 3 PHASE, 60 Hz, 575V, ODP	1	RN19031-5	<	<	<
6	PANEL, CONTROL	1				
	SIZE "K"		320014	<	<	<
	SIZE "N"		320011	<	<	<
7	COOLER, OIL, W/C	1	RN33155	<	<	<
8	AFTERCOOLER, W/C	1	CX720	<	<	<
9	COOLER SUPPORT ASSEMBLY, L.H.	1	CS700	<	<	<
10	COOLER SUPPORT ASSEMBLY, R.H.	1	CS701	<	<	<
11	SUPPORT, CONTROL PANEL	2	CS663	<	<	<
12	BASE, MOTOR	1	RN12025	<	<	<
13	BELTGUARD, BACK	1	RN10510-4	RN10510-3	RN10510-8	<
14	BELTGUARD, FRONT	1	RN10510-2	<	<	<
15	U-BOLT	2	VH2210	<	<	<
16	BOLT, M12 (M10)	4	VH1665	VH1432	<	VH1665
17	LOCKWASHER, M12 (M10)	4	VH1240	VH2403	<	VH1240
18	SHEAVE, MOTOR				RN14109	
19	BUSHING, MOTOR				RN14177-4	
20	SHEAVE, AIR END				RN14113	SEE
21	BUSHING, MOTOR				RN14175-1	TABLE 1
22	BELT				RN14307-1	
23	SCREW, HEX WASHER HEAD, 1/4-20 x 3/4" LG.	13	VH51FF	<	<	<
24	LOCKWASHER, 1/4"	17	VH35F	<	<	<
25	WASHER, FLAT, 1/4"	4	VH32F	<	<	<
26	SCREW, HEX HEAD CAP, 5/16-18 x 3/4" LG.	12	VH12HF	<	<	<
27	LOCKWASHER, 5/16"	12	VH35H	<	<	<
28	WASHER, FLAT, 5/16"	12	VH32H	<	<	<
29	PLUG, PLASTIC	2	1030004	<	<	<
30	SCREW, HEX CAP HEAD, 1/4-20 x 7/8" LG.	4	VH32FG	<	<	<
31	SCREW, HEX WASHER HEAD, 1/2-13 x 1"	4	VH11PH	<	<	<
32	LOCKWASHER, 1/2"	4	VH35P	<	<	<
33	WASHER, FLAT, 1/2"	4	VH32P	<	<	<
34	AIR END SEAL KIT (NOT SHOWN)	1	RN90437-1	RN90425-6	RN90435-1	RN90437-1
35	MOISTURE SEPARATOR, (FOR BASE MOUNTED UNIT) NOT SHOWN	1	RN34122	<	<	<

\* FOR MOTOR PART NUMBERS OTHER THAN STANDARD ODP, CONSULT FACTORY

	ITEM NO	DESCRIPTION	R/S 30B		R/S 30	R/S 30A
			QTY	PART NO.	PART NO.	PART NO.
100 PSI	18	SHEAVE, MOTOR	1	RN14106	RN14106	RN14109
	19	BUSHING, MOTOR	1	RN14177-4	RN14177-4	RN14177-4
	20	SHEAVE, AIR END	1	RN14106	RN14106	1350028
	21	BUSHING, AIR END	1	RN14177-2	RN14177-1	1350012
	22	BELT	4	RN14315-1	RN14315-1	RN14307-1
125 PSI	18	SHEAVE, MOTOR	1	RN14102	RN14101	RN14109
	19	BUSHING, MOTOR	1	RN14176-3	RN14176-3	RN14177-4
	20	SHEAVE, AIR END	1	RN14106	RN14103	RN14104
	21	BUSHING, AIR END	1	RN14177-2	RN14176-1	RN14175-1
	22	BELT	4	RN14308-1	RN14311-1	RN14307-1
150 PSI	18	SHEAVE, MOTOR	1	RN14103	RN14102	RN14110
	19	BUSHING, MOTOR	1	RN14176-3	RN14176-3	RN14177-4
	20	SHEAVE, AIR END	1	RN14109	RN14103	RN14107
	21	BUSHING, AIR END	1	RN14177-2	RN14177-1	RN14176-1
	22	BELT	4	RN14310-1	RN14315-1	RN14307-1
175 PSI	18	SHEAVE, MOTOR	1	RN14101	RN14101	RN14110
	19	BUSHING, MOTOR	1	RN14176-3	RN14176-3	RN14177-4
	20	SHEAVE, AIR END	1	RN14109	RN14110	RN14101
	21	BUSHING, AIR END	1	RN14177-2	RN14177-1	RN14176-1
	22	BELT	4	RN14308-1	RN14315-1	RN14308-1

**Table 1: SHEAVES, BUSHING AND BELTS**

# NOTES

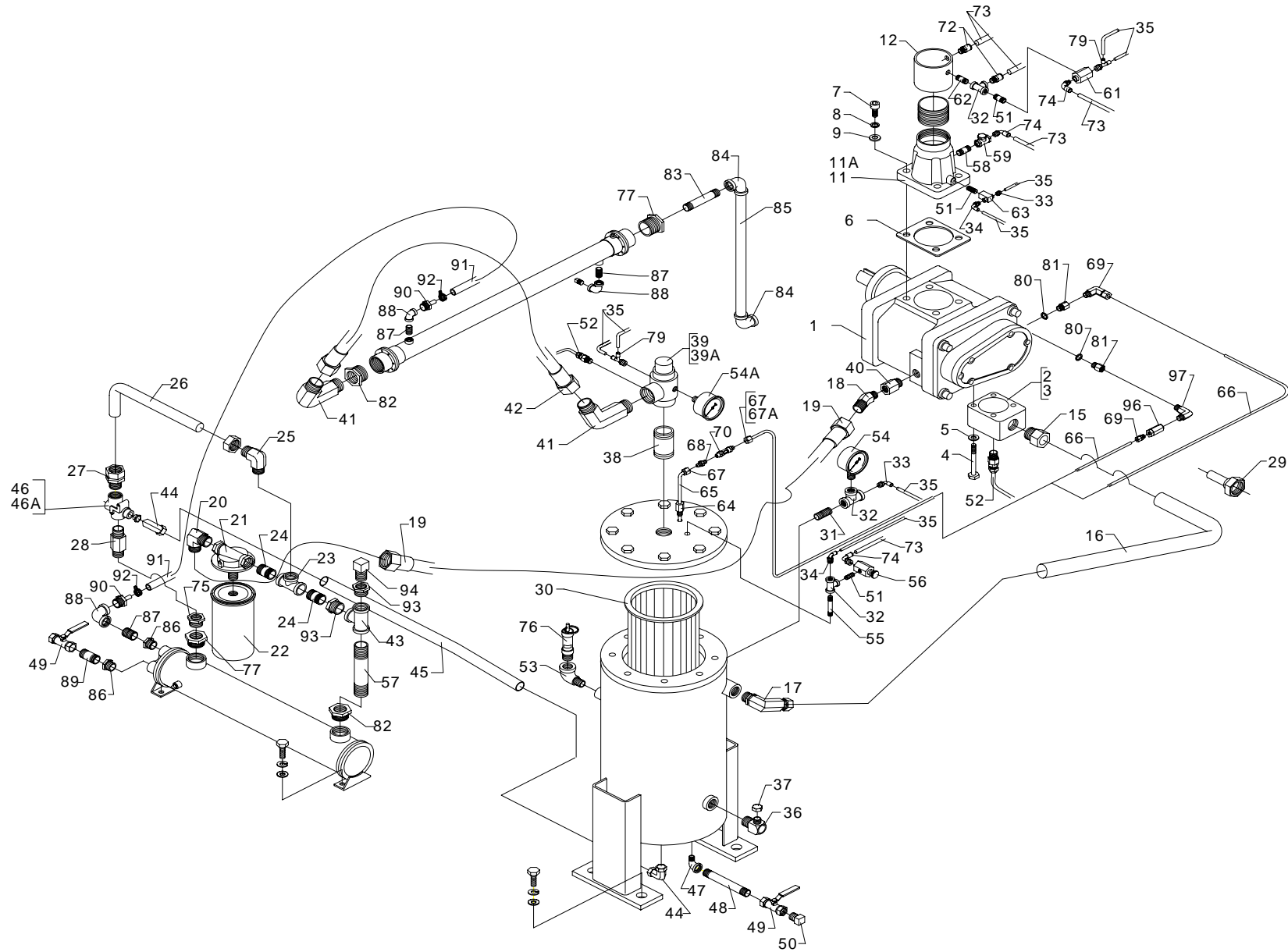


Figure 2: Water and Oil Piping Group

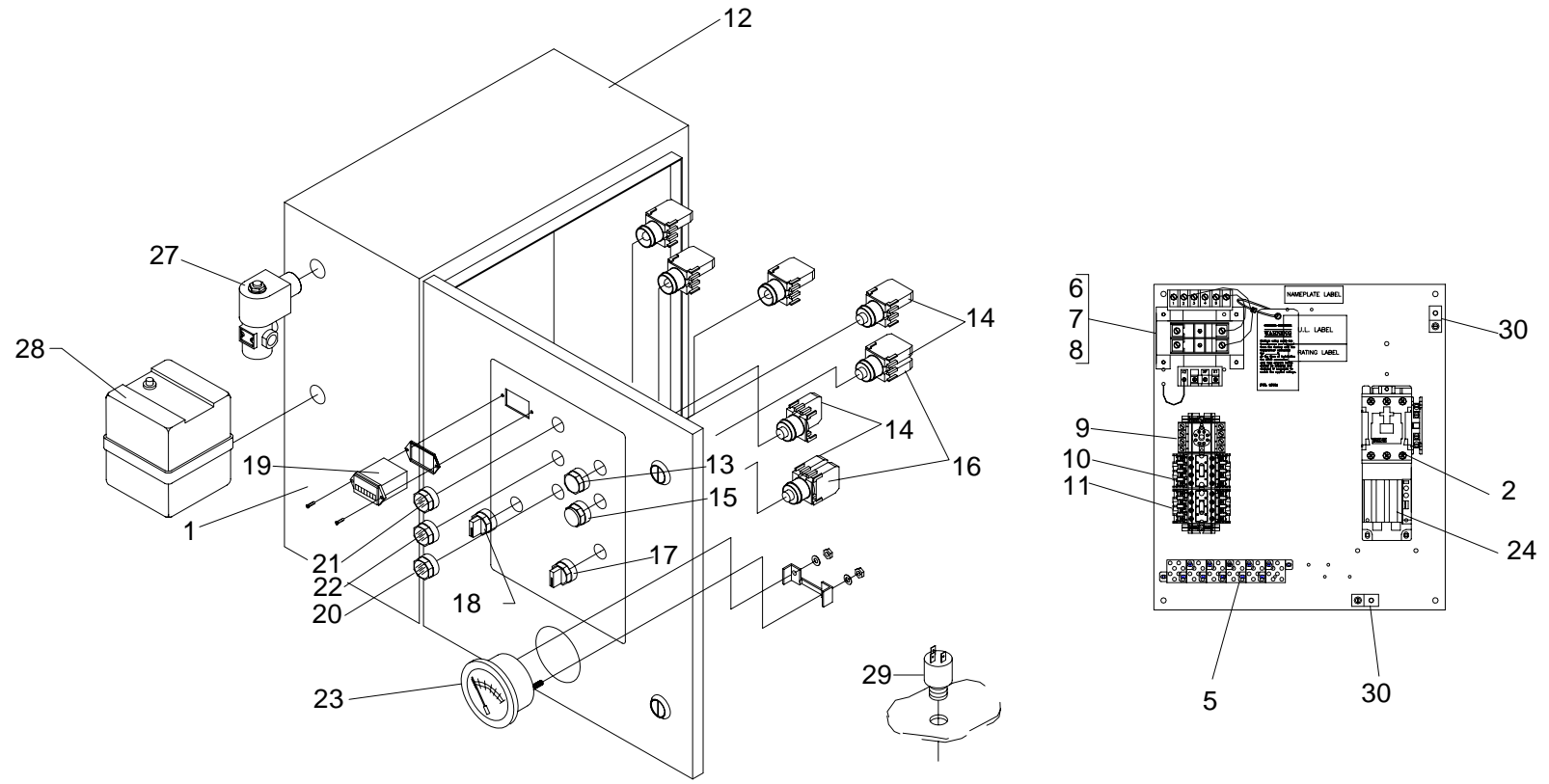
## PARTS LIST FOR AIR AND OIL PIPING GROUP (REF. FIG. 2)

ITEM NO.	DESCRIPTION	QTY.	R/S 30B (B160)	R/S 30 (E12)	R/S 30A1 (E6)	R/S 30A (B101)
1	AIR END	1	CS643	CS625	CS624	CS642
2	FLANGE, DISCHARGE	1	RN10682-2	CS906	CS905	RN10679-2
3	"O" RING (NOT SHOWN)	1	RN10682-1	RN10672-1	RN10670-1	<
4	BOLT, M12 x 1.75	4	VH1452	VH1442	VH1442	<
5	LOCKWASHER, 12mm	4	VH1240	<	<	<
6	GASKET, INLET VALVE	1	RN10674-3	RN10674-2	RN24569-1	<
7	BOLT	4	VH1433	VH1435	VH1431	VH1667
8	LOCKWASHER	4	VH1240	VH1234	VH1237	VH35H
9	WASHER	4	VH1239	VH1238	N/A	VH32H
11	VALVE, INLET	1	RN24582	<	320015	<
11A	KIT, SERVICE, INLET VALVE	1	RN24570-2	<	RN24569-1	<
12	COUPLING 2 1/2"	1	200000	<	<	<
13	ASSEMBLY, AIR FILTER (NOT SHOWN)	1	VA1145	<	RN24020	<
14	ELEMENT, AIR FILTER (NOT SHOWN)	1	VA1144	<	VA1129	<
15	CONNECTOR, STRAIGHT	1	RN52182	<	VAB729	VAB705
16	TUBE, STEEL	1	OFE992	<	OFE984	<
17	CONNECTOR, ELBOW	1	RN52145-1	<	RN52180	<
18	CONNECTOR	1	RN52148	RN60087	RN60082	RN60166-11
19	HOSE, ASSEMBLY	1	RN60169-1	RN60122	RN60097	<
20	CONNECTOR, 1" OD FL x 3/4" NPT, ELBOW	1	RN60087	<	RN60084	<
21	OIL FILTER HEAD	1	RN28100	<	<	<
22	ELEMENT, OIL FILTER	1	RN28201	<	<	<
23	TEE - 3/4" NPT	1	VA10EF	<	<	<
24	NIPPLE, 3/4" NPT X 2"	2	VA13ECA	<	<	<
25	CONNECTOR, ELBOW, 3/4" OD x 3/4"NPT	1	VAA718	<	<	<
26	TUBE, BY-PASS TO OIL FILTER	1	OFE960	<	<	<
27	CONNECTOR, STRAIGHT, 3/4"OD x SAE12	1	RN52143	<	<	<
28	ADAPTOR, MALE - 3/4" NPT x SAE12	1	RN52139	<	<	<
29	THERMOWELL, M14 x 1.5	1	RN18679	<	<	<
30	ELEMENT, SEPARATOR	1	RN27542	<	<	<
31	NIPPLE, 1/4 x SHORT	1	VA13BBB	<	<	<
32	TEE - 1/4"	3	VA10BF	<	<	<
33	CONNECTOR, STRAIGHT, QD	2	VAA702	<	<	<
34	CONNECTOR, ELBOW, QD	3	VAA703	<	<	<
35	TUBE, NYLON, BLACK, #11, 1/4" O.D.	-	VA1626	<	<	<
36	COMBINATION OIL FILL AND SIGHT GLASS	1	RN52171	<	<	<
37	CAP W/ VENT HOLE	1	CS741	<	<	<
38	NIPPLE, 1 1/4" NPT x 2 1/2"	1	VA017	<	<	<
39	VALVE, MINIMUM PRESSURE	1	RN42126-4	<	<	<
39A	KIT, SERVICE, MINIMUM PRESSURE VALVE	1	RN42126-1	<	<	<
40	BUSHING 3/4"BSPP x 3/4" NPT	1	VAA672	<	<	<
41	CONNECTOR, 1 1/4"OD FL x 1 1/4"NPT, ELBOW	2	RN60089	<	<	<
42	HOSE, 1 1/4" OD	1	RN60120	<	<	<
43	TEE, 1 1/4"NPT	1	VA10GP	<	<	<
44	CONNECTOR, ELBOW, 3/4"OD x SAE12	2	RN52141	<	<	<
45	TUBE, SEPARATOR TANK TO BY-PASS	1	OFE995	<	<	<
46	VALVE, THERMO BY-PASS, 170° F	1	RN42403	<	<	<
46A	KIT, SERVICE, THERMO BY-PASS VALVE, 170° F	1	RN42403-1	<	<	<
47	ELBOW, STREET - 1/2" NPT	1	VA08DF	<	<	<
48	NIPPLE - 1/2" x 9 1/2" LG.	1	VA900	<	<	<
49	VALVE, BALL - 1/2"	2	VV538	<	<	<
50	PIPE PLUG - 1/2" NPT	1	VA01DR	<	<	<

## PARTS LIST FOR AIR AND OIL PIPING GROUP (REF. FIG. 2)

ITEM NO.	DESCRIPTION	QTY.	R/S30 (B160)	R/S30 (E12)	R/S30A1 (E6)	R/S30A (B101)
51	NIPPLE - 1/4" x CLOSE	3	VA13BAA	<	<	<
52	SWITCH, TEMPERATURE	2	RN18659	<	<	<
53	ELBOW, STREET - 1/4"	2	VA08BF	<	<	<
54	AIR GAUGE, 2 1/2" DIA., LIQUID FILLED	1	RN30323	<	<	<
54A	AIR GAUGE, 2 1/2" DIA., LIQUID FILLED	1	RN30322	<	<	<
55	NIPPLE, 1/4" x 3"	1	VA13BEA	<	<	<
56	VALVE, MODULATING - 1/4"	1	RN42613	<	<	<
57	NIPPLE, 1 1/4"NPT x 10"	1	VA13GQA	<	<	<
58	NIPPLE, 3/8" x CLOSE	1	VA13CAA	<	<	<
59	VALVE, CHECK - 3/8"	1	VV832	<	<	<
61	VALVE, BLOW DOWN - 1/4"	1	RN18428	<	<	<
62	NIPPLE/ORIFICE, BLOW DOWN	1	RN52149	<	<	<
63	VALVE, SHUTTLE - 1/4"	1	RN42105	<	<	<
64	COMPRESSION CONNECTOR, 1/4" NPT x 1/4 OD, STRAIGHT	2	RN52151	<	<	<
65	STEEL TUBE, 1/4" OD	1	OFE965A	<	<	<
66	STEEL TUBE, 1/4" OD	1	OFE991	OFE954	OFE967	<
67	NUT, 1/4" OD, STEEL	2	VAA756	<	<	<
67A	SLEEVE, 1/4" OD, STEEL	2	VAA757	<	<	<
68	UNION	1	VAA701	<	<	<
69	ORIFICE SCAVENGER COMPRESSION CONNECTOR	1	RN52131-3	RN52131-4	RN52131-2	<
70	SIGHT GLASS	1	RN52170	<	<	<
71	SEPARATOR TANK CROSS (NOT SHOWN)	1	RN10140	<	<	<
72	CONNECTOR, STRAIGHT, QUICK DISCONNECT	2	VAA747	<	<	<
73	TUBE, NYLON, BLACK, #11, 3/8" OD	-	VA1628	<	<	<
74	CONNECTOR, ELBOW, QUICK DISCONNECT	4	VAA748	<	<	<
75	BUSHING, 1"NPT x 3/4"NPT	1	VA12FEF	<	<	<
76	VALVE, RELIEF - 1/4" 150 PSI (USED ON 100 PSI AND 125 PSI UNITS) 175 PSI (USED ON 150 PSI UNITS) 200 PSI (USED ON 175 PSI UNITS)	1	RN42810-1 RN42811 RN42812	< < <	< < <	< < <
77	BUSHING, 1 1/2"NPT x 1"NPT	2	VA12HFP	<	<	<
78	PRESSURE REGULATOR FOR 175PSI UNIT (NOT SHOWN)	1	CY58-1	<	<	<
79	TEE, RUN - 1/4" NPT x 1/4" OD TUBE x 1/4" OD TUBE	2	VAB746	<	<	<
80	WASHER (USED FOR VAA745)	1	VAA746	<	<	<
81	ADAPTER, 1/8" BSPP X 1/4" NPTF	1	VAA745	<	<	N/A
82	BUSHING, 1 1/2"NPT x 1 1/4"NPT	2	VA12HGP	<	<	N/A
83	NIPPLE, 1"NPT x 4 1/2"	1	VA13FHA	<	<	<
84	ELBOW, 1"NPT (OPTIONAL - TANK MOUNTED))	2	VA06FF	<	<	<
85	NIPPLE, 1"NPT x 22 1/2" (OPTIONAL - TANK MOUNTED)	1	VAD803	<	<	<
86	BUSHING, 3/4"NPT x 1/2"NPT	2	VA12EDG	<	<	<
87	NIPPLE, 1/2"NPT, CL	3	VA13DAB	<	<	<
88	ELBOW, 1/2"NPT	3	VA06DB	<	<	<
89	NIPPLE, 1/2" x 3"	1	VA13DEB	<	<	<
90	CONNECTOR, 1/2" (WATER HOSE)	2	RN60071	<	<	<
91	HOSE, 1/2"OD, MULTY-PURPOSE	3'	RN60070	<	<	<
92	CLAMP, WORM DRIVE HOSE	2	RN60072	<	<	<
93	BUSHING, 1 1/4"NPT x 3/4"NPT	2	VA12GEF	<	<	<
94	PLUG, 3/4" NPT	1	VA01ER	<	<	<
95	KIT, WATER CONTROL VALVE-OPTIONAL ( NOT SHOWN)		520082	<	<	<
96	CHECK VALVE, 1/4", IN-LINE	1	N/A	VV834	VV834	N/A
97	MALE ELBOW, 1/4"	1	N/A	VAA754	N/A	N/A

# NOTES



**Figure 3: Electrical Components Group – (Open Unit)**

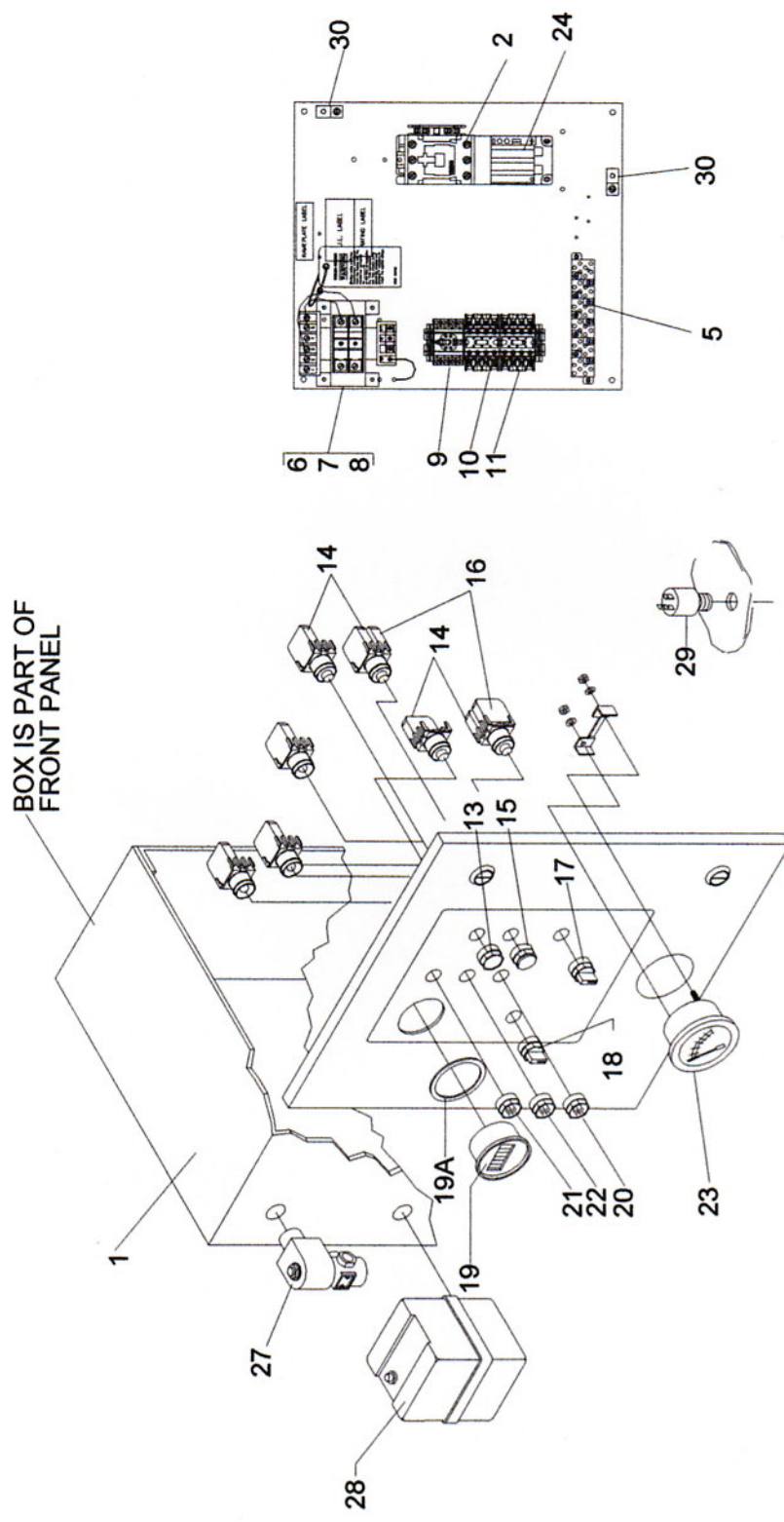


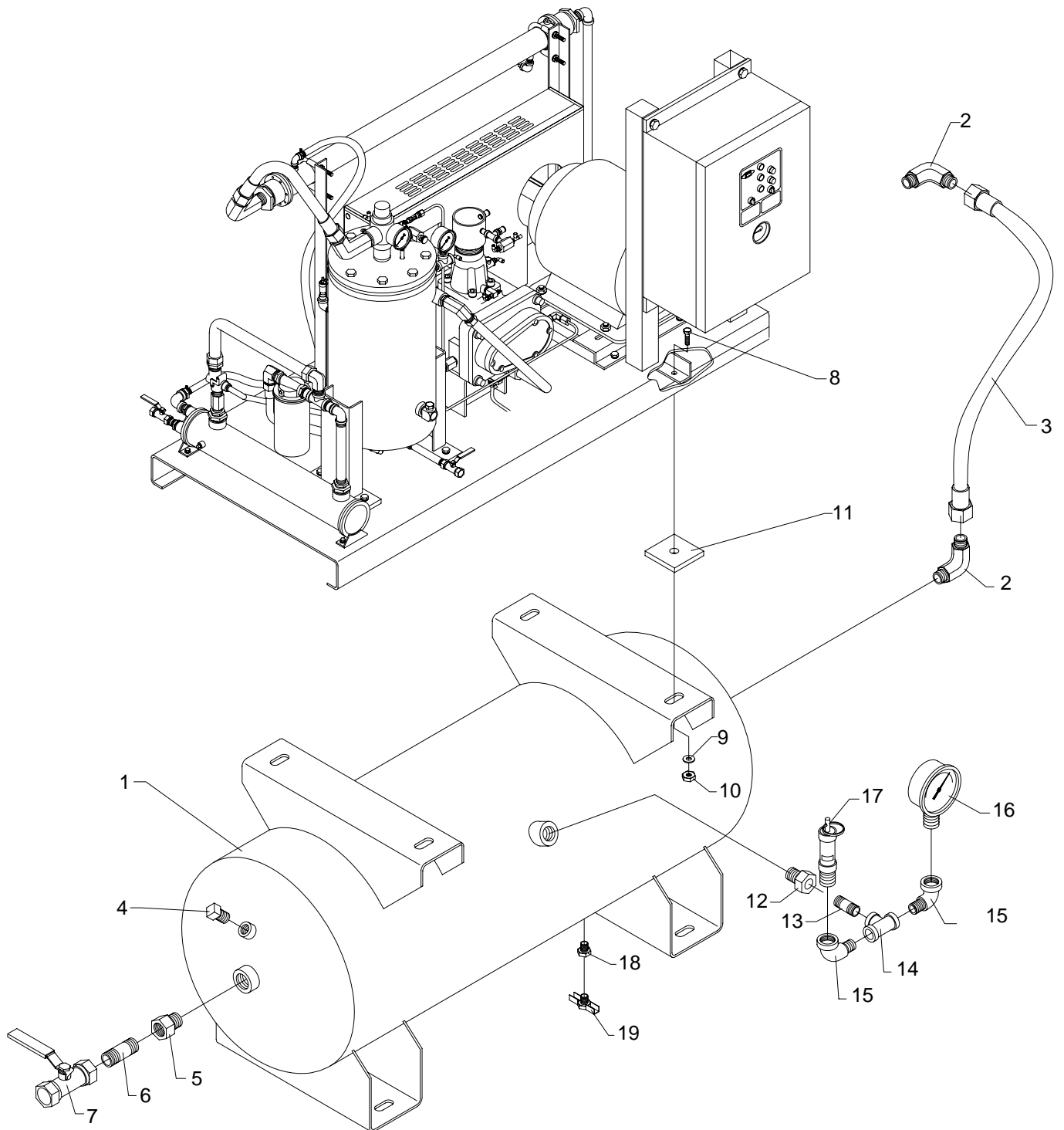
Figure 4: Electrical Components Group (Enclosed Unit)

**PARTS LIST FOR ELECTRICAL COMPONENTS GROUP-OPEN & ENCLOSED (REF. FIG. 3 & 4)**

ITEM NO.	DESCRIPTION	QTY	R/S30,30B(ENCL)	R/S30,30B(OPEN)
1	CONTROL BACK PANEL			
2	STARTER W/INTERCHANGEABLE HEATERS SIZE "K" SIZE "N"			SEE TABLE 2
5	TERMINAL BLOCK	6	1330042	<
6	TRANSFORMER, 150VA, FUSED, 200/230/246/575-120V	1	1330055	<
7	FUSE, TRANSFORMER, PRIMARY			SEE TABLE 2
8	FUSE, TRANSFORMER, SECONDARY			
9	TIMER, 60MIN., PLUG-IN	1	1330026	<
10	SOCKET	1	1330049	<
11	RELAY, 4 POLE, 120V, DPDT	2	1330062	<
12	ENCLOSURE	1	1330058	<
13	PUSH BUTTON STOP SWITCH (GREEN)	1	RN18116	<
14	N.O. CONTACT BLOCK	2	RN18118-2	<
15	PUSH BUTTON STOP SWITCH (RED)	1	RN18118	<
16	N.C. CONTACT BLOCK	2	RN18118-1	<
17	2 POSITION SELECTOR SWITCH (CONST/AUTO)	1	RN18104-9	<
18	2 POSITION SELECTOR SWITCH (LOAD/UNLOAD)	1	RN18104-7	<
19	HOURMETER	1	RN18250	1330048
19A	GASKET, HOURMETER	1	RN18250-1	1230005
20	AMBER LIGHT (STAND BY)	1	RN18212	RN18218
21	RED LIGHT (STOP)	1	RN18210	RN18217
22	GREEN LIGHT (POWER ON)	1	RN18214	RN18219
23	TEMPERATURE GAUGE	1	RN18682	<
24	HEATER-MAIN (NOT SHOWN)			SEE TABLE 2
27	VALVE, SOLENOID	1	RN18422	<
28	SWITCH PRESSURE-100 PSI UNITS	1	1240007	<
	SWITCH PRESSURE-125 PSI UNITS	1	1240007	<
	SWITCH PRESSURE-150 PSI UNITS	1	1240007	<
	SWITCH PRESSURE-175 PSI UNITS	1	1240007	<
29	ANTI-START PRESSURE SWITCH	1	RN18134	<
30	LUG, GROUNDING	2	VE779	<
31	LIGHT BULBS (NOT SHOWN)	3	N/A	RN18270
	WIRING DIAGRAM FOR FVM		610011	<
	WIRING DIAGRAM FOR Y-DELTA		610029	<

	ITEM NO	DESCRIPTION	QTY	200 VOLT	230 VOLT	460 VOLT	575 VOLT
R/S 30, 30B	1	CONTROL BACK PANEL	1	1330035	<	1330034	<
	2	SIZE "K" STARTER	1	N/A	N/A	RN18960	<
	2	SIZE "N" STARTER	1	RN18963	<	N/A	N/A
	7	TRANSFOMER, 150VA,FUSED, 120V	1	1330075	<	<	1330055
	8	FUSE, TRANSFORMER, PRIMARY	2	RN18345-1	<	<	<
	9	FUSE, TRANSFORMER, SECONDARY	1	RN18351	<	<	<
	24	HEATER - MAIN	1	RN18988	RN18988	RN18981	RN18980

**Table 2: CONTROL PANEL, HEATERS AND FUSES**



**Figure 5: Tank And Base Group**

**PARTS LIST FOR TANK AND BASE GROUP (REF. FIG. 5)**

ITEM NO.	DESCRIPTION	QTY.	R/S 30, 30B
1	TANK ASSEMBLY 120 GALLON 200 GALLON	1	OFD244 OFD246
2	MALE ELBOW, 90 DEG. - 1 1/4" x 1"	2	VAA728
3	HOSE ASSEMBLY - 1 1/8" ID x 31" LG.	1	RN60144
4	PIPE PLUG - 1"	1	VA02FR
5	BUSHING - 2" x 1"	2	VA12JFA
6	NIPPLE, SHORT, BLACK - 1" x 2"	1	VA13FCA
7	BALL VALVE - 1"	1	VV532
8	SCREW, HEX HEAD CAP, 1/2-13 UNC x 2" LG, GR. 5	4	VH12PP
9	WASHER - 1/2"	4	VH33P
10	NUT, SELF-LOCKING, 1/2-13	4	VH20P
11	ISOLATOR PAD	4	RN60256
12	BUSHING - 3/8" x 1/4"	1	VA12CBA
13	NIPPLE, BLACK - 1/4"	1	VA13BAB
14	TEE - 1/4"	1	VA10BF
15	ELBOW, STREET, BLACK, 90 DEG. - 1/4"	2	VA08BF
16	GAUGE, AIR PRESSURE	1	RN30320
17	RELIEF VALVE - 1/4"	1	RN42810
18	BUSHING - 1/2" x 1/4"	1	VA12DBP
19	DRAIN COCK - 1/4"	1	VV514

# NOTES

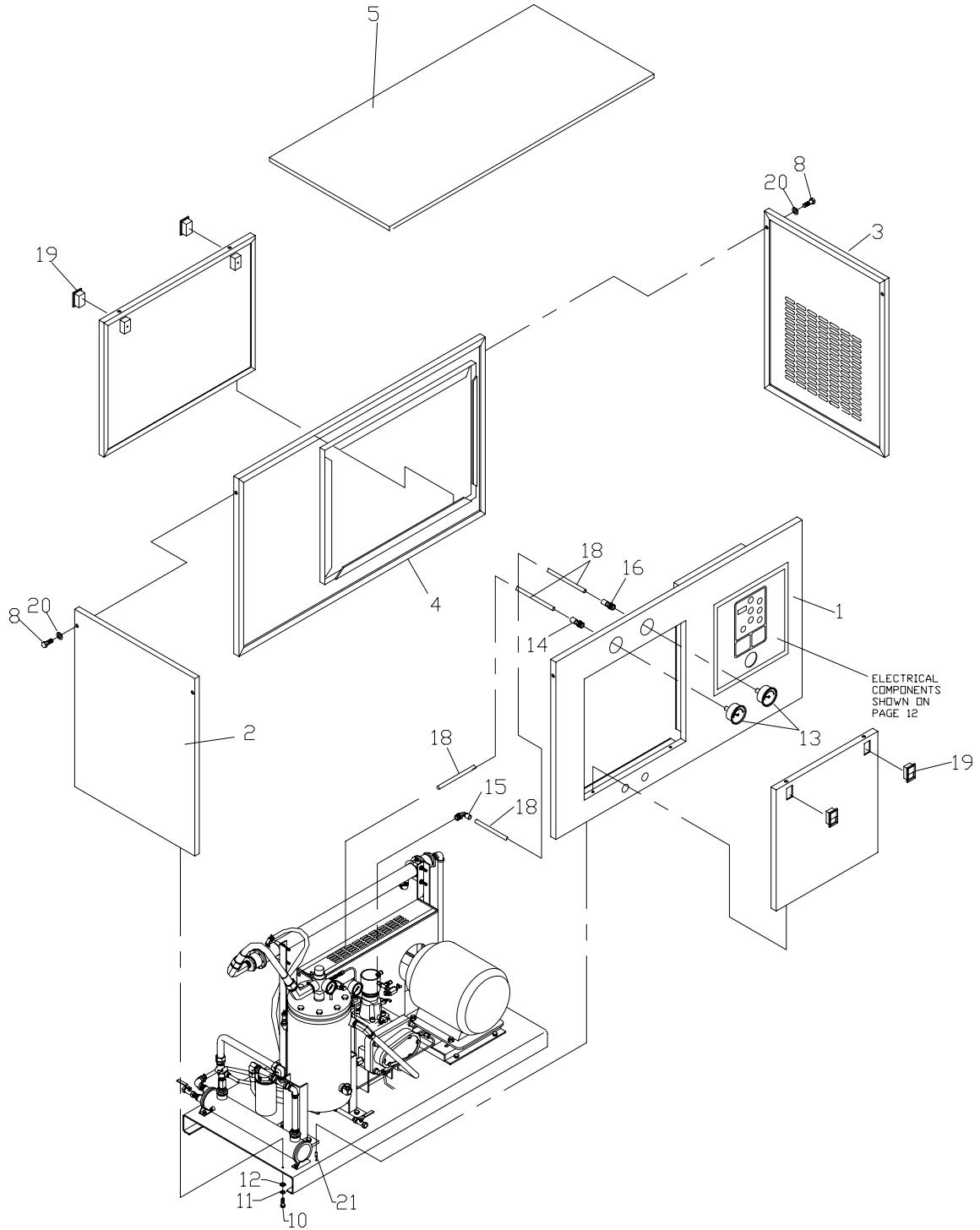


Figure 6: Enclosure Group

**PARTS LIST FOR ENCLOSURE GROUP (REF. FIG. 6)**

ITEM NO.	DESCRIPTION	QTY.	R/S 30, 30B
1	FRONT PANEL FOAM ASSEMBLY	1	RN10020-1A
2	LEFT SIDE PANEL FOAM ASSEMBLY	1	RN10020-8A
3	RIGHT SIDE PANEL FOAM ASSEMBLY	1	RN10020-3A
4	BACK PANEL FOAM ASSEMBLY	1	RN10020-7A
5	TOP PANEL FOAM ASSEMBLY	1	RN10020-5A
6	SUPPORT BRACE FOR FRONT PANEL - R.H. (NOT SHOWN)	1	CS679
7	SUPPORT BRACE FOR FRONT PANEL - L.H. (NOT SHOWN)	1	CS758
8	SCREW, SOCKET HEAD CAP, BUTTON HEAD, 1/4-20 x 1 1/2" LG.	4	VH1737
9	SCREW, HEX HEAD CAP, 1/4-20 x 1/2" LG. (NOT SHOWN)	12	VH12FD
10	SCREW, HEX HEAD CAP, 1/4-20 x 1" LG.	4	VH12FH
11	LOCKWASHER - 1/4"	16	VH35F
12	WASHER, FLAT - 1/4"	16	VH32F
13	GAUGE, AIR PRESSURE, 2 1/2" DIA.	2	RN30322
14	CONNECTOR, STRAIGHT, QD, 1/4" NPTF x 1/4" OD TUBE	1	VAA787
15	CONNECTOR, ELBOW, COMPR. 1/4" NPT x 1/4" OD TUBE	1	RN52150-2
16	CONNECTOR, STRAIGHT, COMPR. 1/4" NPTF x 1/4" OD TUBE	1	RN52150-7
17	INSERT (NOT SHOWN)	2	VA1620
18	TUBE, NYLON, BLACK, #11	-	VA1626
19	PADDLE HANDLE	4	CS681
20	LOCKWASHER, INTERNAL - 1/4"	4	VH38F
21	PIN	4	CS910
22	*ENCLOSURE, NOISE SUPPRESSOR ASSEMBLY (NOT SHOWN)	2	RN10020-AA
23	*TOP COVER SOUND ENCLOSURE (NOT SHOWN)	2	RN10020-B

\*DENOTES OPTIONAL ITEM

# ROUTINE MAINTENANCE KITS

## 4,000 HOUR KIT

	WORKING PRESSURE			
MODEL	100 PSI	125 PSI	150 PSI	175 PSI
R/S30,30B	VGB513	<	<	<
R/S30A	VGA593	<	<	<

### KIT INCLUDES

- (1) SEPARATOR ELEMENT
- (4) OIL FILTER ELEMENTS
- (2) AIR FILTER ELEMENTS

## 4,000 HOUR KIT (FOR UNITS WITH HEAVY DUTY INLET FILTER)

	WORKING PRESSURE			
MODEL	100 PSI	125 PSI	150 PSI	175 PSI
R/S30,30B	VGC539	<	<	<
R/S30A	VGC538	<	<	<

### KIT INCLUDES:

- (1) SEPARATOR ELEMENT
- (4) OIL FILTER ELEMENTS
- (2) HD MAIN ELEMENTS
- (2) HD SAFETY ELEMENTS

## 8,000 HOUR KIT

	WORKING PRESSURE			
MODEL	100 PSI	125 PSI	150 PSI	175 PSI
R/S30,30B	VGB514	<	<	<
R/S30A	VGB505	<	<	<

### KIT INCLUDES:

- (2) SEPARATOR ELEMENT
- (8) OIL FILTER ELEMENTS
- (4) AIR FILTER ELEMENTS

## 8,000 HOUR KIT (FOR UNITS WITH HEAVY DUTY INLET FILTER)

	WORKING PRESSURE			
MODEL	100 PSI	125 PSI	150 PSI	175 PSI
R/S30,30B	VGf511	<	<	<
R/S30A	VGf510	<	<	<

### KIT INCLUDES:

- (2) SEPARATOR ELEMENT
- (8) OIL FILTER ELEMENTS
- (4) HD MAIN ELEMENTS
- (4) HD SAFETY ELEMENTS

## 12,000 HOUR KIT

	WORKING PRESSURE			
MODEL	100 PSI	125 PSI	150 PSI	175 PSI
R/S30,30B	VGf521	VGf575	VGf521	VGf575
R/S30A1	N/A	VGd528	N/A	N/A

### KIT INCLUDES:

- (3) SEPARATOR ELEMENT
- (12) OIL FILTER ELEMENTS
- (6) AIR FILTER ELEMENTS
- (1) INLET VALVE KIT
- (1) THERMO BY-PASS VALVE KIT
- (1) MINIMUM PRESSURE VALVE KIT
- (1) SET OF "V" BELTS

## ROUTINE MAINTENANCE KITS (CON'T)

### 12,000 HOUR KITS (FOR UNITS WITH HEAVY DUTY INLET FILTER)

MODEL	WORKING PRESSURE			
	100 PSI	125 PSI	150 PSI	175 PSI
R/S30,30B	VGf583	VGf582	VGf583	VGf582
R/S30A1	N/A	VGf591	N/A	N/A

#### KIT INCLUDES:

- (3) SEPARATOR ELEMENT
- (12) OIL FILTER ELEMETS
- (6) AIR FILTER ELEMENTS,MAIN
- (6) AIR FILTER ELEMENTS,SAFETY
- (1) INLET VALVE KIT
- (1) THERMO BY-PASS VALVE KIT
- (1) MINIMUM PRESSURE VALVE KIT
- (1) SET OF "V" BELTS

# NOTES

**CURTIS – TOLEDO, INC.**

1905 KIENLEN AVE., ST. LOUIS, MO 63133  
TEL. (314) 383-1300 FAX (314) 381-1439  
E-MAIL: CURTISCOMP@AOL.COM