

# CURTIS

## *R/S 200D*

# PARTS LIST

DIRECT DRIVE  
AIR AND WATERCOOLED

### HOW TO ORDER PARTS

Give name and part number as shown in parts list and serial number. Serial number is on nameplate attached to control panel of unit.

LOT NUMBER:

R/S 200D LOT# 8  
R/S 200D W/C LOT# 1

### IMPORTANT

Make a permanent record of the Model and Serial numbers of your machine here. You'll save time and expense by including this reference identification on replacement parts

MODEL : \_\_\_\_\_

SER. NO.: \_\_\_\_\_

## CURTIS-TOLEDO, INC.

1905 KIENLEN AVENUE, ST. LOUIS, MISSOURI 63133

Tel. (314) 383-1300

Fax (314) 381-1439

E-MAIL: CURTISCOMP@AOL.COM



# **DANGER**

Air used for breathing or food processing must meet OSHA 29CFR 1910.134 or FDA 21CFR 178.3570 Regulations. Failure to do so may cause severe injury or death

# INTRODUCTION

## HOW TO USE THE PARTS LIST

Using the List of Illustrations obtain the figure number of the assembly in which your part is located. Go to the appropriate figure and locate your part on the illustration. Using the key number, find the part on the parts list.

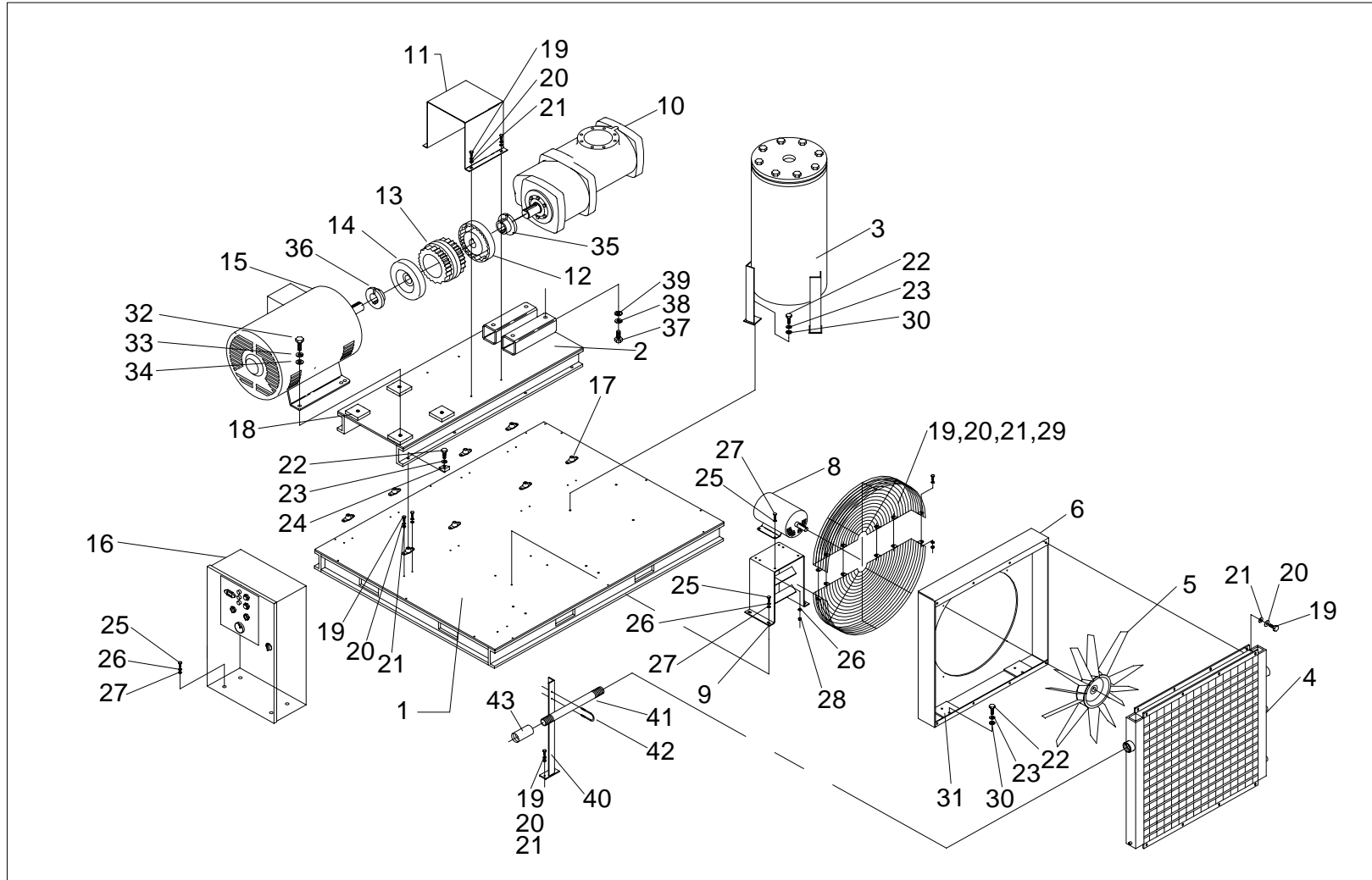
## LIST OF ILLUSTRATIONS

<u>Title</u>	<u>Page</u>
Major Components Group	2, 4
Air And Oil Piping Group	8, 12
Electrical Components Group (FVM)	16
Electrical Components Group (Y-Delta)	20
Electrical Components Group (Soft Start)	23
Enclosure Group	26



## **WARNING**

Personal injury and/or equipment damage will result by failing to pay attention to the vital safety information and instruction in the operating and instruction manual. Carefully read, understand, and retain all safety information and instructions before operating this unit.



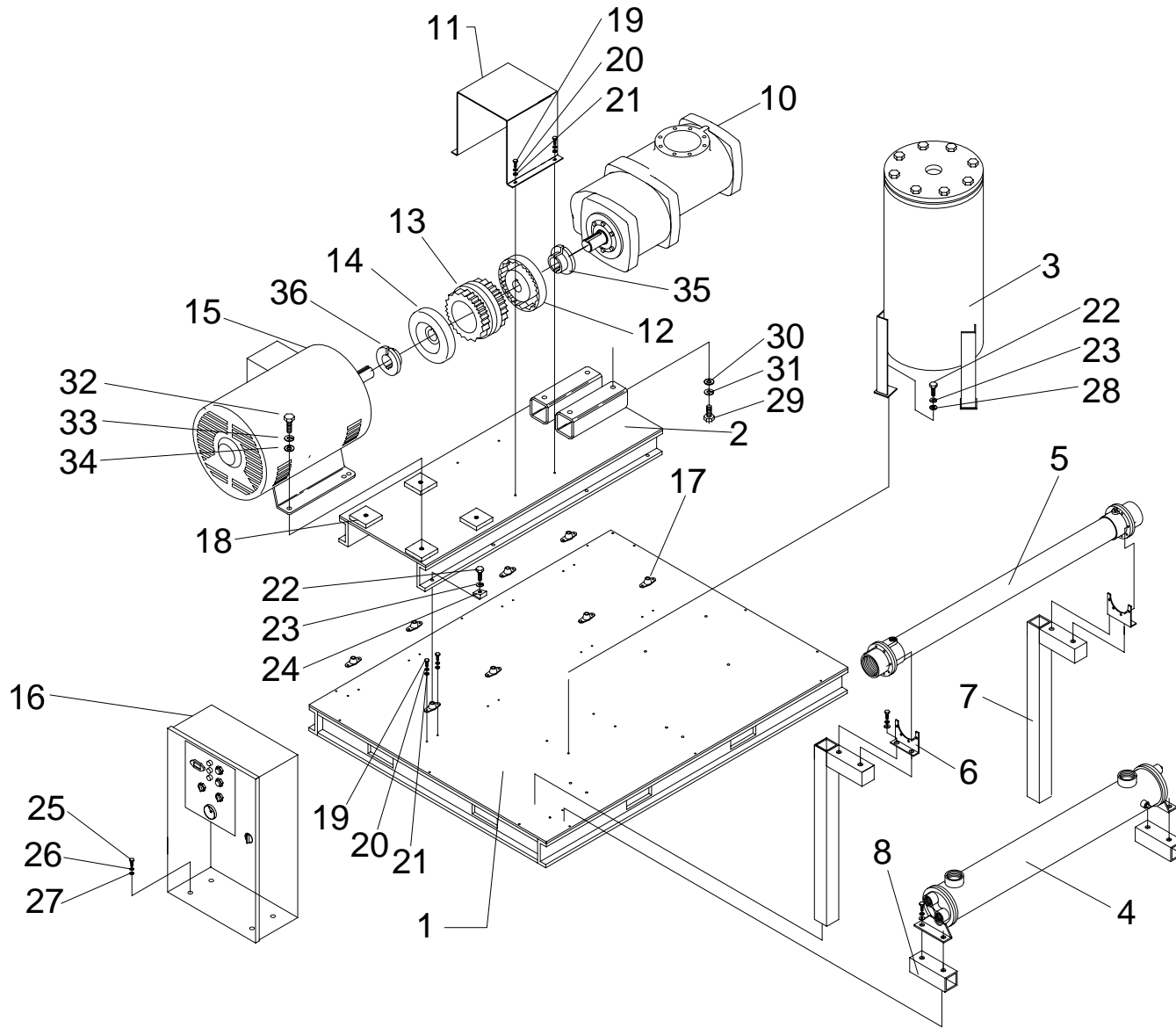
**FIG.1 MAJOR COMPONENTS GROUP  
AIR COOLED**

**PARTS LIST FOR MAJOR PARTS GROUP (REF. FIG. 1)**

CAP269

ITEM NO.	DESCRIPTION	QTY.	R/S 200D
1	MAIN BASE ASSEMBLY	1	RN10112
2	SUB BASE ASSEMBLY	1	RN10108-7
3	SEPARATOR, OIL/AIR	1	RN10226-3
4	COOLER, AIR/OIL	1	RN32228
5	BLADE, FAN	1	RN32427
6	BOX, FAN	1	RN10474-2
7	GUARD, FAN, HALF	2	RN10460-8
*8	MOTOR 15HP, FAN, 3 PHASE, 60 Hz, 230/460V, ODP, 1140 RPM	1	RN19019
9	MOUNT, FAN MOTOR	1	RN10120-14
10	AIR END	1	SEE TABLE 1
11	COUPLING GUARD	1	RN10340-2
12	COUPLING, AIR END		SEE TABLE 1
13	SLEEVE		
14	COUPLING, MOTOR		
*15	MOTOR 200HP, MAIN, 3 PHASE, 60 Hz, 230/460V, ODP	1	RN19200-2
16	CONTROL PANEL		SEE TABLE 2 & 3
17	MOUNT, VIBRATION	8	RN60255
18	MOTOR MOUNTING BLOCK		N/A
19	HHCS 5/16-18 x 3/4", GRADE 5	34	VH12HF
20	LOCKWASHER, 5/16"	34	VH35H
21	WASHER, FLAT, 5/16"	34	VH32H
22	HHCS 1/2-20 X 1-1/4", GRADE 5	15	VH12NK
23	LOCKWASHER, 1/2"	15	VH35P
24	WASHER-SQUARED BEVELED, 1/2"	8	VH50N
25	HHCS 3/8-16UNC X 1", GRADE 5	12	VH12KH
26	LOCKWASHER, 3/8"	12	VH35K
27	WASHER, FLAT, 3/8"	12	VH32K
28	NUT, HEX - 3/8"	4	VH15K
29	NUT, HEX - 5/16"	6	VH15H
30	WASHER, FLAT, 1/2"	7	VH32P
31	PLATE, FAN BOX MN	2	RN10474-4
32	HHCS 5/8-11 X 1 1/2", GRADE 5	4	VH12RM
33	LOCKWASHER, 5/8"	4	VH35R
34	WAHER, FLAT, 5/8"	4	VH32R
35	BUSHING, A/E COUPLING FLANGE		SEE TABLE 1
36	BUSHING, MOTOR COUPLING FLANGE		SEE TABLE 1
37	HHCS M20x2.5 X 35mm	4	VH1449
38	WASHER, FLAT, 20mm	4	VH1445
39	LOCKWASHER, 20mm	4	VH1446
40	BRACKET	1	RN10149
41	NIPPLE, 2 1/2"NPT X 10"	1	VA13KQ
42	U-BOLT, 2 1/2" PIPE	1	VH2214
43	COUPLING, 2 1/2"NPT	1	VA16KA
44	SEPARATOR, MOISTURE, 2 1/2" (NOT SHOWN)	1	RN34130

\*FOR MOTOR PART NUMBERS OTHER THAN STANDARD ODP, CONSULT FACTORY



**FIG.2 MAJOR COMPONENTS GROUP  
WATER-COOLED**

**WATER-COOLED  
PARTS LIST FOR MAJOR PARTS GROUP (REF. FIG. 2)**

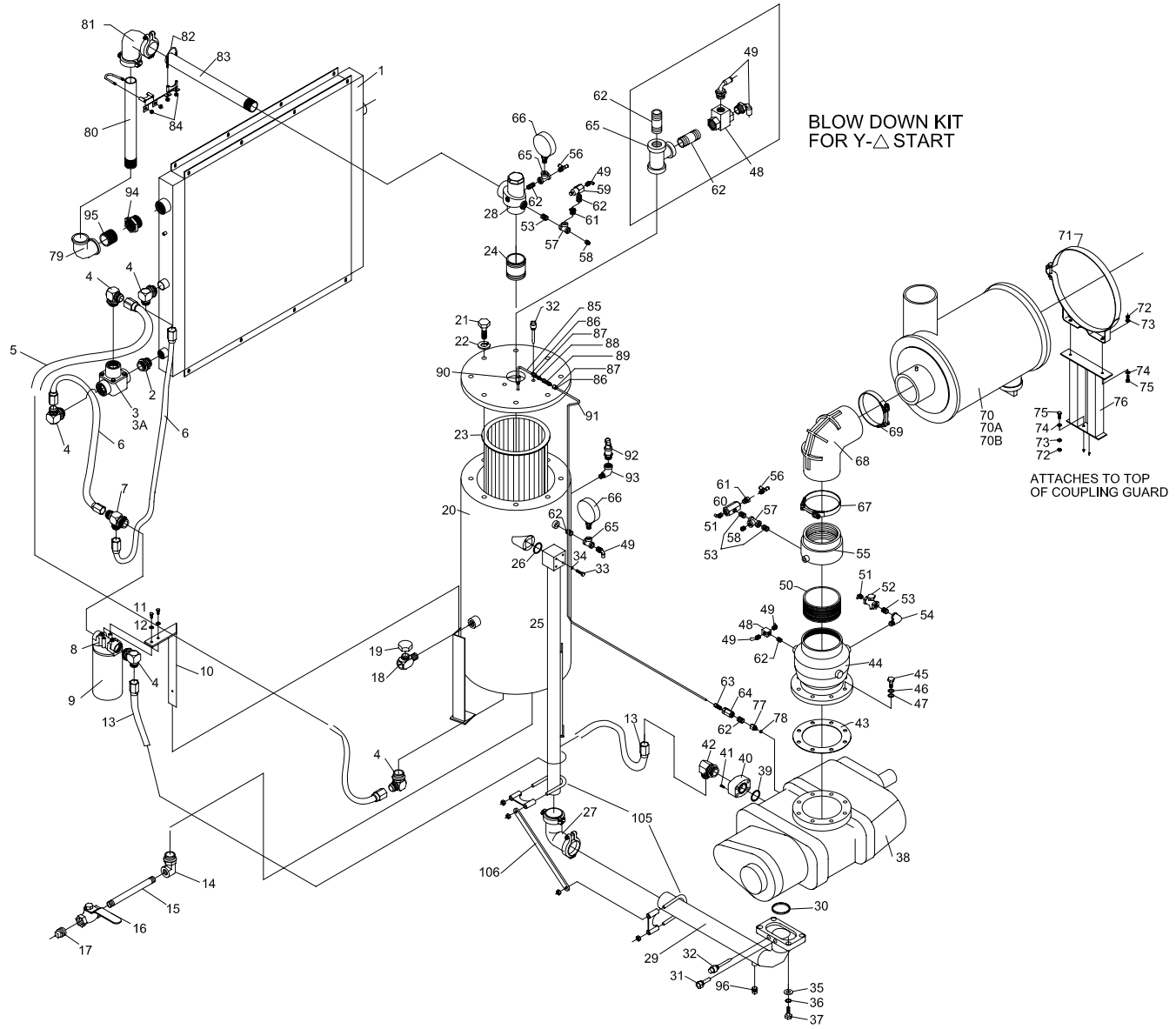
ITEM NO.	DESCRIPTION	QTY.	R/S 125D
1	MAIN BASE ASSEMBLY	1	RN10112
2	SUB BASE ASSEMBLY	1	RN10108-7
3	SEPARATOR, OIL/AIR	1	RN10226-3
4	COOLER, OIL W/C	1	RN32263
5	AFTERCOOLER, AIR W/C	1	RN33140
6	BRACKET, MTG. AFTERCOOLER	2	RN33163
7	BRACKET, AFTERCOOLER	2	RN33164
8	SPACER, OIL COOLER	2	RN10163
9			
10	AIR END	SEE TABLE 1	
11	COUPLING GUARD	1	RN10340-2
12	COUPLING, AIR END		
13	SLEEVE	SEE TABLE 1	
14	COUPLING, MOTOR		
*15	MOTOR, MAIN, 3 PHASE, 60 Hz, 230/460V, ODP	1	RN19200-2
16	CONTROL PANEL	SEE TABLE 2 & 3	
17	MOUNT, VIBRATION	8	RN60255
18	MOTOR MOUNTING BLOCK	4	N/A
19	HHCS 5/16-18 x 3/4", GRADE 5	28	VH12HF
20	LOCKWASHER, 5/16"	28	VH35H
21	WASHER, FLAT, 5/16"	28	VH32H
22	HHCS 1/2-20 X 1-1/4", GRADE 5	11	VH12NK
23	LOCKWASHER-KANTLINK-LIGHT, 1/2"	11	VH35P
24	WASHER-SQUARED BEVELED, 1/2"	8	VH50N
25	HHCS 3/8-16UNC X 1", GRADE 5	4	VH12KH
26	LOCKWASHER, 3/8"	4	VH35K
27	WASHER, FLAT, 3/8"	4	VH32K
28	WASHER, FLAT, 1/2"	3	VH32P
29	HHCS M20x2.5 X 35mm	4	VH1449
30	WASHER, FLAT, 20mm	4	VH1445
31	LOCKWASHER, 20mm	4	VH1446
32	HHCS 5/8-11 X 1 1/2", GRADE 5	4	VH12RM
33	LOCKWASHER, 5/8"	4	VH35R
34	WASHER, FLAT, 5/8"	4	VH32R
35	BUSHING, A/E COUPLING FLANGE	SEE TABLE 1	
36	BUSHING, MOTOR FLANGE	SEE TABLE 1	

\*FOR MOTOR PART NUMBERS OTHER THAN STANDARD ODP, CONSULT FACTORY

MODEL	PRES	AIR END COUPLING				COUPLING SLEEVE	MOTOR COUPLING				AIR END MODEL	MOTOR/ODP FRAME
		SET#	FLANGE	BUSHING#	BUSH. TYPE		SET#	FLANGE	BUSHING#	BUSH. TYPE		
200D	100	RN14520-15	RN14520-6	RN14182-1	F-65mm	RN14514-2	RN14520-11	RN14520-6	RN14182-2	F-2 3/8	E75G	445TS
S13B	125	RN14520-15	RN14520-6	RN14182-1	F-65mm	RN14514-2	RN14520-11	RN14520-6	RN14182-2	F-2 3/8	E75G	445TS
	150	RN14520-15	RN14520-6	RN14182-1	F-65mm	RN14514-2	RN14520-11	RN14520-6	RN14182-2	F-2 3/8	E75G	445TS
	175	RN14520-15	RN14520-6	RN14182-1	F-65mm	RN14514-2	RN14520-11	RN14520-6	RN14182-2	F-2 3/8	E75G	445TS

TABLE 1: A/E, A/E FLANGE, SLEEVE, MOTOR FLANGE, BUSHING &amp; MOTOR FRAME

# NOTES



**FIG.3 AIR AND OIL PIPING GROUP AIR COOLED**

### PARTS LIST FOR AIR AND OIL PIPING GROUP AIR COOLED (REF. FIG.3)

ITEM NO.	DESCRIPTION	QTY.	R/S 200D
1	COOLER, AIR/OIL	1	RN32228
2	UNION, STRAIGHT THREAD, SAE 24	1	VAB704
3	THERMO VALVE SAE 24, 170F	1	RN42426
3A	REPAIR KIT, THERMO VALVE	1	RN42426-1
4	CONNECTOR, ELBOW, 1 1/2" 37FL X SAE 24	6	VAB711
5	HOSE ASSEMBLY, #24 X 95"	1	RN60197-1
6	HOSE ASSEMBLY, #24 X 46"	3	RN60143-1
7	BRANCH TEE, STRAIGHT THREAD, SAE 24	1	VAB714
8	OIL FILTER HEAD	1	RN28110
9	OIL FILTER ELEMENT	2	RN28205
10	BRACKET, OIL FILTER	1	RN10164
11	BOLT, HHCS 3/8-16 X 1"	4	VH12KH
12	LOCKWASHER, 3/8"	4	VH35K
13	PIPE PLUG, 1/2"	1	VA01DR
14	ADAPTER, ELBOW, FEMALE 3/4"NPT X SAE 12	1	RN60078
15	NIPPLE, 3/4" X 12"	1	VA13ESA
16	VALVE, 3/4"	1	VV540
17	PIPE PLUG, 3/4"	1	VA01ER
18	OIL FILL & SIGHT GLASS	1	RN52171
19	OIL FILL CAP	1	CS741
20	SEPARATOR, AIR & OIL	1	RN10226-3
21	BOLT, 7/8-9 X 2 1/4"	8	VH12VQ
22	LOCKWASHER, 7/8"	8	VH35U
23	SEPARATOR ELEMENT	1	RN27535
24	NIPPLE, 2"NPT X 4"	1	VA24JGA
25	FLANGE-PIPE ASSEMBLY	1	RN10678-7
26	O-RING, #237	1	RN10688-1
27	COUPLING, FLEX, 3" ELBOW, LONG	1	RN60222-3
28	MIN. VALVE PRESS, 2"	1	RN42130
29	FLANGE ASSEMBLY, E75 DISCHARGE	1	RN10678-6
30	O-RING, #250	1	RN10678-4
31	THERMOWELL, 1/2"NPT	1	RN18681
32	TEMPERATURE SWITCH	2	RN18657
33	HHCS 5/8-11 X 6"	4	VH1465
34	LOCKWASHER, 5/8"	4	VH35R
35	WASHER, FLAT, M20	4	VH1445
36	LOCKWASHER, M20	4	VH1446
37	HHCS M20 X 2.5 X 50mm	4	VH1443
38	AIR END		SEE TABLE 1
39	O-RING, #225	1	RN10672-1
40	ANCHOR FLANGE, SAE 24	1	RN10672-2
41	HHCS, M12 X 1.75 X 60mm	4	VH1442
42	CONNECTOR, 1/4"OD X 1/4"NPT, ELBOW	1	RN52150-2
43	INLET GASKET	1	RN10685-2
44	INLET VALVE, 6"	1	RN24585

### PARTS LIST FOR AIR AND OIL PIPING GROUP AIR COOLED (REF. FIG.3)

ITEM NO.	DESCRIPTION	QTY.	R/S 200D
45	HEX HEAD BOLT, M16 X 2.0 X 45mm	8	VH1440
46	LOCKWASHER, M16	8	VH1234
47	WASHER FLAT, M16	8	VH1238
48	VALVE, SHUTTLE 1/4"	1	RN42105
49	1/4", QD, ELBOW	3	VAA703
50	NIPPLE, 6"NPT, CL.	1	VA13RAA
51	1/2", QD, ELBOW	2	VAB724
52	VALVE, CHECK 1/2"	1	VV824
53	NIPPLE, 1/2", CLOSE	4	VA13DAB
54	STREET ELBOW, 1/2"	1	VA08DP
55	COUPLING, 6"	1	RN24579-4
56	RUN TEE, 1/4"	2	VAB746
57	TEE, 1/2"	2	VA10DF
58	1/2", QD, STRAIGHT	2	VAB728
59	MODULATION VALVE, 1/4"	1	RN42613
60	BLOWDOWN VALVE, 1/2"	1	RN18425
61	BUSHING, 1/2" X 1/4"	2	VA12DBP
62	NIPPLE, 1/4", CLOSE	3	VA13BAA
63	CONNECTOR, 1/4", COMPRESSION W/ 9/64" ORIFICE	1	RN52137
64	VALVE, CHECK IN-LINE, 1/4"	1	VV834
65	TEE, 1/4"	2	VA10BF
66	PRESSURE GAGE	2	RN30323
67	T-BAR CLAMP, 8"ID	1	RN24084-6
68	ELBOW, 90 DEG, REDUCING 7" X 6" ID	1	RN24084-9
69	T-BAR CLAMP, 7"ID	1	RN24084-5
70	AIR FILTER, HEAVY DUTY	1	RN24086
70A	FILTER ELEMENT, PRIMARY	1	RN24086-1
70B	FILTER ELEMENT, SAFETY	1	RN24086-2
71	BAND MOUNTING	1	RN24084-3
72	NUT, 3/8"	2	VH15K
73	LOCKWASHER, 3/8"	4	VH35K
74	WASHER, FLAT 3/8"	4	VH32K
75	HHCS 3/8-16 X 1"	4	VH12KH
76	BRACKET, HDF	1	RN10150
77	ADAPTER, 1/8" BSPP MALE X 1/4" NPT FEMALE	1	VAA745
78	WASHER (BOND SEAL)	1	VAA746
79	ELBOW, 2"NPT	1	VA06JP
80	NIPPLE, 18-1/2" LONG	1	VAB896
81	COUPLING, 90 DEG	1	RN60221
82	U-BOLT, 2" PIPE	1	VH2211
83	NIPPLE, 21-1/4" LONG	1	VAD813
84	BRACE	2	CS897
85	TUBE, SCAVENGER LINE	1	OFE1009
86	SLEEVE, 1/4"	2	VAA757
87	NUT, 1/4"	2	VAA756

**PARTS LIST FOR AIR AND OIL PIPING GROUP AIR COOLED (REF. FIG.3)**

ITEM NO.	DESCRIPTION	QTY.	R/S 200D
88	UNION, 1/4"	1	VAA701
89	SIGHT GLASS	1	RN52170
90	CONNECTOR, COMPRESSION	1	RN52151
91	TUBE, SCAVENGER LINE	1	OFE1010
92	VALVE, SAFETY, 1"		
	100 PSI, 125 PSI UNIT – 150 PSI VALVE	1	RN42825
	150 PSI UNIT – 175 PSI VALVE	1	RN42826
	175 PSI UNIT – 200 PSI VALVE	1	RN42827
93	STREET ELBOW, 1"	1	VA08FF
94	BUSHING, 2 1/2" X 2"NPT	1	VA12KJP
95	NIPPLE, 2"NPT, CLOSE	1	VA24JAA
103	TUBE, 1/4" NYLON #11 (NOT SHOWN)		VA1626
104	TUBE, 1/2" NYLON #11 (NOT SHOWN)		VA1632
105	U-BOLT, 3-1/2", 3/8"-16 FULL CR.	2	VH2212
106	STRAP, SUPPORT	1	RN10166
	<u>BLOWDOWN KIT FOR Y-D START</u>		<u>CY41M</u>
48	VALVE, SHUTTLE 1/4"	1	RN42105
49	1/4", QD, ELBOW	2	VAA703
62	NIPPLE, 1/4", CLOSE	2	VA13BAA
65	TEE, 1/4"	1	VA10BF

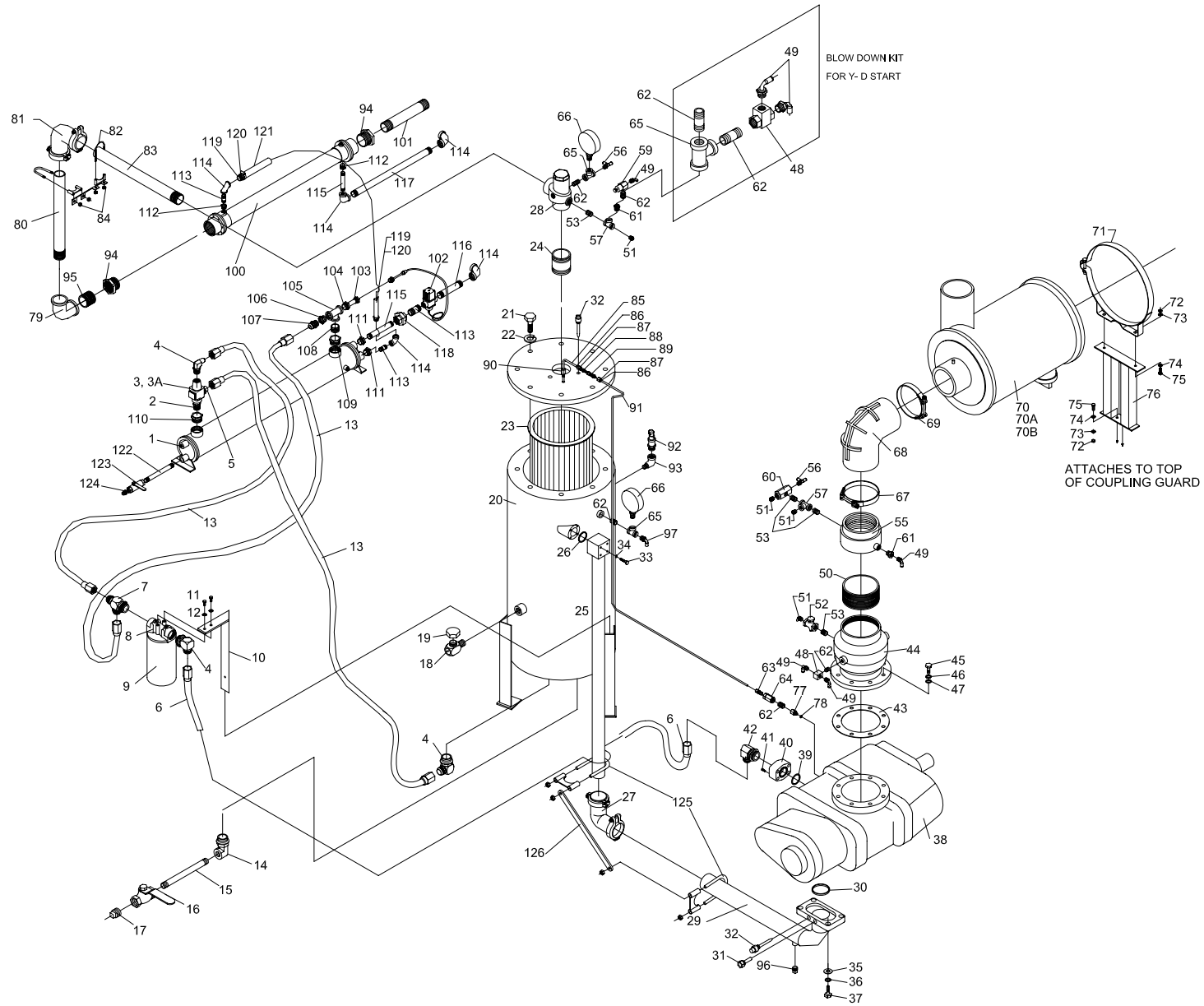


FIG.4 WATER AND OIL PIPING GROUP WATER-COOLED

## PARTS LIST FOR AIR AND OIL PIPING GROUP WATER-COOLED (REF. FIG. 4)

ITEM NO.	DESCRIPTION	QTY.	R/S 200D W-C
1	COOLER, OIL W/C	1	RN32263
2	ADAPTER, 1 ¼"NPT X SAE24	1	VAD818
3	THERMO VALVE SAE 24, 170F	1	RN42426
3A	REPAIR KIT, THERMO VALVE	1	RN42426-1
4	CONNECTOR, ELBOW, 1 7/8-12 UN 37FL X 1 7/8-12	6	VAB711
5	CONNECTOR, STRAIGHT, 1 ½"od X 1 7/8-12	1	VAB707
6	HOSE ASSEMBLY, #24 X 38"	1	RN60129
6A	HOSE ASSEMBLY, #24 X 46"	1	RN60143-1
7	BRANCH TEE, STRAIGHT THREAD, SAE 24	1	VAB714
8	OIL FILTER HEAD	1	RN28110
9	OIL FILTER ELEMENT	2	RN28205
10	BRACKET, OIL FILTER	1	RN10164
11	BOLT, HHCS 5/16-18 X ¾"	2	VH12HF
12	LOCKWASHER, 5/16	2	VH35H
13	HOSE ASSEMBLY, #24 X 53"	1	RN60143
13A	HOSE ASSEMBLY, #24 X 74"	1	RN60140
14	ADAPTOR, ELBOW, FEMALE ¾"NPT X SAE 12	1	RN60078
15	NIPPLE, ¾" X 12"	1	VA13ESA
16	VALVE, ¾"	1	VV540
17	PIPE PLUG, ¾"	1	VA01ER
18	OIL FILL & SIGHT GLASS	1	RN52171
19	OIL FILL CAP	1	CS741
20	SEPARATOR, AIR & OIL	1	RN10226-3
21	BOLT, 7/8-9 X 2 ¼"	8	VH12VQ
22	LOCKWASHER, 7/8"	8	VH35U
23	SEPARATOR ELEMENT	1	RN27535
24	NIPPLE, 2"NPT X 4"	1	VA24JGA
25	FLANGE-PIPE ASSEMBLY	1	RN10678-7
26	O-RING, #237	1	RN10688-1
27	COUPLING, FLEX, 3" ELBOW, LONG	1	RN60222-3
28	MIN. VALVE PRESS, 2"	1	RN42130
29	FLANGE ASSEMBLY, E75 DISCHARGE	1	RN10678-6
30	O-RING, #250	1	RN10678-4
31	THERMOWELL, ½"NPT	1	RN18681
32	TEMPERATURE SWITCH	2	RN18657
33	HHCS 5/8-11 X 6"	4	VH1465
34	LOCKWASHER, 5/8"	4	VH35R
35	WASHER, FLAT, M20	4	VH1445
36	LOCKWASHER, M20	4	VH1446
37	HHCS M20 X 2.5 X 35mm	4	VH1443
38	AIR END	SEE TABLE 1	
39	O-RING, #225	1	RN10672-1
40	ANCHOR FLANGE, SAE 24	1	RN10672-2
41	HHCS, M12 X 1.75 X 60mm	4	VH1442
42	CONNECTOR, ELBOW, 1 ¼" 37FL X SAE 24	1	VAB723
43	INLET GASKET	1	RN10685-2
44	INLET VALVE, 6"	1	RN24585
44	INLET VALVE, 6"	1	RN24585
45	HEX HEAD BOLT, M16 X 2.0 X 45mm	8	VH1440
46	LOCKWASHER, M16	8	VH1234
47	WASHER FLAT, M16	8	VH1238
48	VALVE, SHUTTLE ¼"	1	RN42105
49	¼", QD, ELBOW	4	VAA703
50	NIPPLE, 6"NPT, CL.	1	VA13RAA
51	CONNECTOR, 3/8"OD X ½"NPT, QD, STR.	4	VAA785
52	VALVE, CHECK ½"	1	VV824
53	NIPPLE, ½", CLOSE	4	VA13DAB
54			
55	COUPLING, 6"	1	RN24579-4
56	RUN TEE, ¼"	2	VAB746
57	TEE, ½"	2	VA10DF
58			
59	MODULATION VALVE, ¼"	1	RN42613

## PARTS LIST FOR AIR AND OIL PIPING GROUP WATER-COOLED (REF. FIG. 4)

ITEM NO.	DESCRIPTION	QTY.	R/S 200D W-C
60	BLOWDOWN VALVE, ½"	1	RN18425
61	BUSHING, ½" X ¼"	2	VA12DBP
62	NIPPLE, ¼", CLOSE	3	VA13BAA
63	CONNECTOR, 1/4", COMPRESSION W/ 9/64" ORIFICE	1	RN52137
64	VALVE, CHECK IN-LINE, ¼"	1	VV834
65	TEE, ¼"	2	VA10BF
66	PRESSURE GAGE	2	RN30323
67	T-BAR CLAMP, 8"ID	1	RN24084-6
68	ELBOW, 90 DEG, REDUCING 7" X 6" ID	1	RN24084-9
69	T-BAR CLAMP, 7"ID	1	RN24084-5
70	AIR FILTER, HEAVY DUTY	1	RN24086
70A	FILTER ELEMENT, PRIMARY	1	RN24086-1
70B	FILTER ELEMENT, SAFETY	1	RN24086-2
71	BAND MOUNTING	1	RN24084-3
72	NUT, 3/8"	2	VH15K
73	LOCKWASHER, 3/8"	4	VH35K
74	WASHER, FLAT 3/8"	4	VH32K
75	HHCS 3/8-16 X 1"	4	VH12KH
76	BRACKET, HDF	1	RN10150
77	ADAPTER, 1/8" BSPP MALE X ¼" NPT FEMALE	1	VAA745
78	WASHER (BOND SEAL)	1	VAA746
79	ELBOW, 2"NPT	1	VA06JP
80	NIPPLE, 2"NPT X 18 ½"	1	VAB896
81	COUPLING, 2", 90 DEG	1	RN60221
82	U-BOLT, 2-1/4"	1	VH2211
83	NIPPLE, 2"NPT X 21-1/4"	1	VAD813
84	BRACE	2	CS897
85	TUBE, SCAVENGER LINE	1	OFE961
86	SLEEVE, ¼"	2	VAA757
87	NUT, ¼"	2	VAA756
88	UNION, ¼"	1	VAA701
89	SIGHT GLASS	1	RN52170
90	CONNECTOR, COMPRESSION	1	RN52151
91	TUBE, SCAVENGER LINE	1	OFE998
92	VALVE, SAFETY, 1" 100 PSI, 125 PSI UNIT – 150 PSI VALVE 150 PSI UNIT – 175 PSI VALVE 175 PSI UNIT – 200 PSI VALVE	1 1 1	RN42825 RN42826 RN42827
93	STREET ELBOW, 1"	1	VA08FF
94	BUSHING, 3"NPT X 2"NPT	2	VA12LJP
95	NIPPLE, 2"NPT, CLOSE	1	VA24JAA
96	PIPE PLUG, ½"NPT	1	VA01DR
97	CONNECTOR, COMPR. ELBOW, ¼"OD X ¼"NPT	1	RN52150-2
98	TUBE, ¼" NYLON #11 (NOT SHOWN)		VA1626
99	TUBE, 3/8" NYLON #11 (NOT SHOWN)		VA1628
100	AFTERCOOLER, AIR W/C	1	RN33140
101	NIPPLE, 2"NPT X 21"	1	VAD822
102	VALVE, WATER CONTROL, 1 ¼"	1	CF1558
103	PROBE WELL, ¾"NPT X 6"	1	CF1560
104	BUSHING, 1 ½"NPT X ¾"NPT	1	VA12HEF
105	TEE, 1 ½"NPT	1	VA10HF
106	BUSHING, 1 ½"NPT X 1 ¼"NPT	1	VA12HGP
107	CONNECTOR, 1 ¼"OD 37' FL X 1 ¼"NPT	1	VAB721
108	NIPPLE, 1 ½"NPT, SHORT	1	VA13HBA
109	BUSHING, 3"NPT X 1 ½"NPT	1	VA12LHP
110	BUSHING, 3"NPT X 1 ¼"NPT	1	VA12LGP
111	BUSHING, 2"NPT X 1 ¼"NPT, GALV.	2	VA12JGB
112	BUSHING, 1 1/2"NPT X 1 ¼"NPT, GALV.		VA12HGB
113	NIPPLE, 1 ¼"NPT, CL., GALV	3	VA13GAB
114	ELBOW, 90 DEG., 1 ¼"NPT, GALV.	5	VA08GB
115	NIPPLE, 1 ¼"NPT X 3", GALV.	2	VA13GEB

## PARTS LIST FOR AIR AND OIL PIPING GROUP WATER-COOLED (REF. FIG. 4)

116	NIPPLE, 1 1/4"NPT X 12", GALV.	1	VA13GSB
117	NIPPLE, 1 1/4"NPT X 22", GALV.	1	VAD838
<b>ITEM NO.</b>	<b>DESCRIPTION</b>	<b>QTY.</b>	<b>R/S 200D W-C</b>
118	UNION, 1 1/4"NPT, BRASS	1	VAD837
119	NIPPLE, 1 1/4"OD X 1 1/4"NPT MALE, BRASS	2	RN60008
120	HOSE CLAMP, WORM DRIVE	2	RN60009
121	HOSE, MULTIPURPOSE, 1 1/4"ID	8'	RN60007
122	NIPPLE, 3/8"NPT X 4"	1	VA13CGB
123	BALL VALVE, 3/8"	2	VV539
124	PLUG, 3/8"	2	VA01CA
125	U-BOLT 3-1/2", 3/8"-16 FULL CR.	2	VH2212
126	STRAP, SUPPORT	1	RN10166
	<u>BLOWDOWN KIT FOR Y-D START</u>		<u>CY41M</u>
48	VALVE, SHUTTLE 1/4"	1	RN42105
49	1/4", QD, ELBOW	2	VAA703
62	NIPPLE, 1/4", CLOSE	2	VA13BAA
65	TEE, 1/4"	1	VA10BF

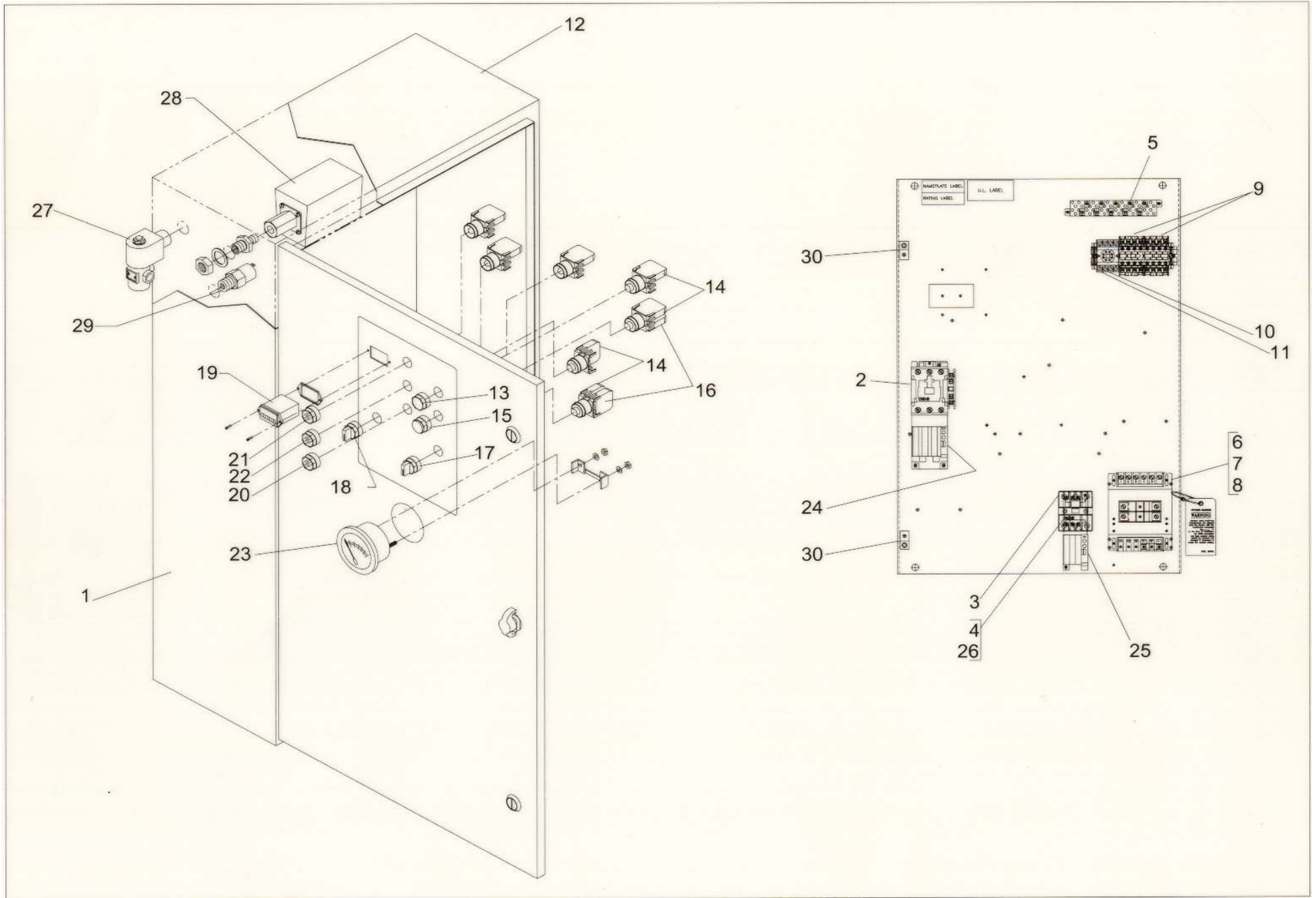


FIG.5 ELECTRICAL COMPONENTS GROUP - FVM

### PARTS LIST FOR ELECTRICAL COMPONENTS GROUP – FVM (REF. FIG. 5)

ITEM NO.	DESCRIPTION	QTY.	R/S 200D
1	CONTROL PANEL ASSEMBLY		
2	STARTER WITH INTERCHANGEABLE HEATERS (MAIN) SIZE "S"	SEE TABLE 2	
3	STARTER SIZE "E" WITH INTERCHANGABLE HEATERS	1	RN18965
4	FUSE BLOCK - 30A, 600V	1	RN18314-1
5	TERMINAL BLOCK	26	RN18339
6	TRANSFORMER, FUSED – 120V	SEE TABLE 2	
7	FUSE, TRANSFORMER, PRIMARY		
8	FUSE, TRANSFORMER, SECONDARY		
9	RELAY, 4 POLE, 120V, DPDT	2	1330062
*10	SOCKET (OPTIONAL)	1	1330049
*11	TIMER, 60 MIN., PLUG-IN (OPTIONAL)	1	1330026
12	ENCLOSURE, 37.5 X 21.5 X 10	1	RN18059
13	PUSH BUTTON START SWITCH	1	RN18116
14	N.O. CONTACT BLOCK	4	RN18118-2
15	PUSH BUTTON STOP SWITCH (RED)	1	RN18118
16	N.C. CONTACT BLOCK	2	RN18118-1
*17	2 POSITION SELECTOR SWITCH (CONST/AUTO) (OPTIONAL)	1	RN18104-9
18	2 POSITION SELECTOR SWITCH (LOAD/UNLOAD)	1	RN18104-7
19	HOURMETER	1	1330048
*20	AMBER LIGHT (STAND BY) (OPTIONAL)	1	RN18218
21	RED LIGHT (STOP)	1	RN18217
22	GREEN LIGHT (POWER ON)	1	RN18219
23	TEMPERATURE GAUGE	1	RN18683
24	HEATER, MAIN	SEE TABLE 2	
25	HEATER, FAN		
26	FUSE, FAN		
27	VALVE, SOLENOID	1	RN18422
28	SWITCH, PRESSURE – 100 PSI UNITS	1	RN18133-2
	SWITCH, PRESSURE – 125 PSI UNITS	1	RN18133-2
	SWITCH, PRESSURE – 150 PSI UNITS	1	RN18133-4
	SWITCH, PRESSURE – 175 PSI UNITS	1	RN18133-4
29	ANTI-START PRESSURE SWITCH	1	RN18134
30	LUG, GROUNDING	2	VE779
	WIRING DIAGRAM FOR FVM		610005

\* PARTS FOR OPTIONAL TIME DUAL CONTROL

	ITEM NO	DESCRIPTION	QTY	200 VOLT	230 VOLT	460 VOLT	575 VOLT
R/S 200D	1	CONTROL PANEL ASSEMBLY	1	N/A	N/A	1330061	1330061
	2	SIZE "S" STARTER	1			RN18860	RN18860
	6	TRANSFOMER, 250VA,FUSED, 120V	1			1330054	1330054
	7	FUSE, TRANSFORMER, PRIMARY	2			VE334	VE334
	8	FUSE, TRANSFORMER, SECONDARY	1			RN18393	RN18393
	24	HEATER - MAIN	1			RN18974	RN18973
	25	HEATER - FAN	1			RN18978	RN18978
	26	FUSE, FAN	3			RN18318-2	RN18318-1

Table 2: CONTROL PANEL, STARTERS, HEATERS AND FUSES - FVM

# NOTES

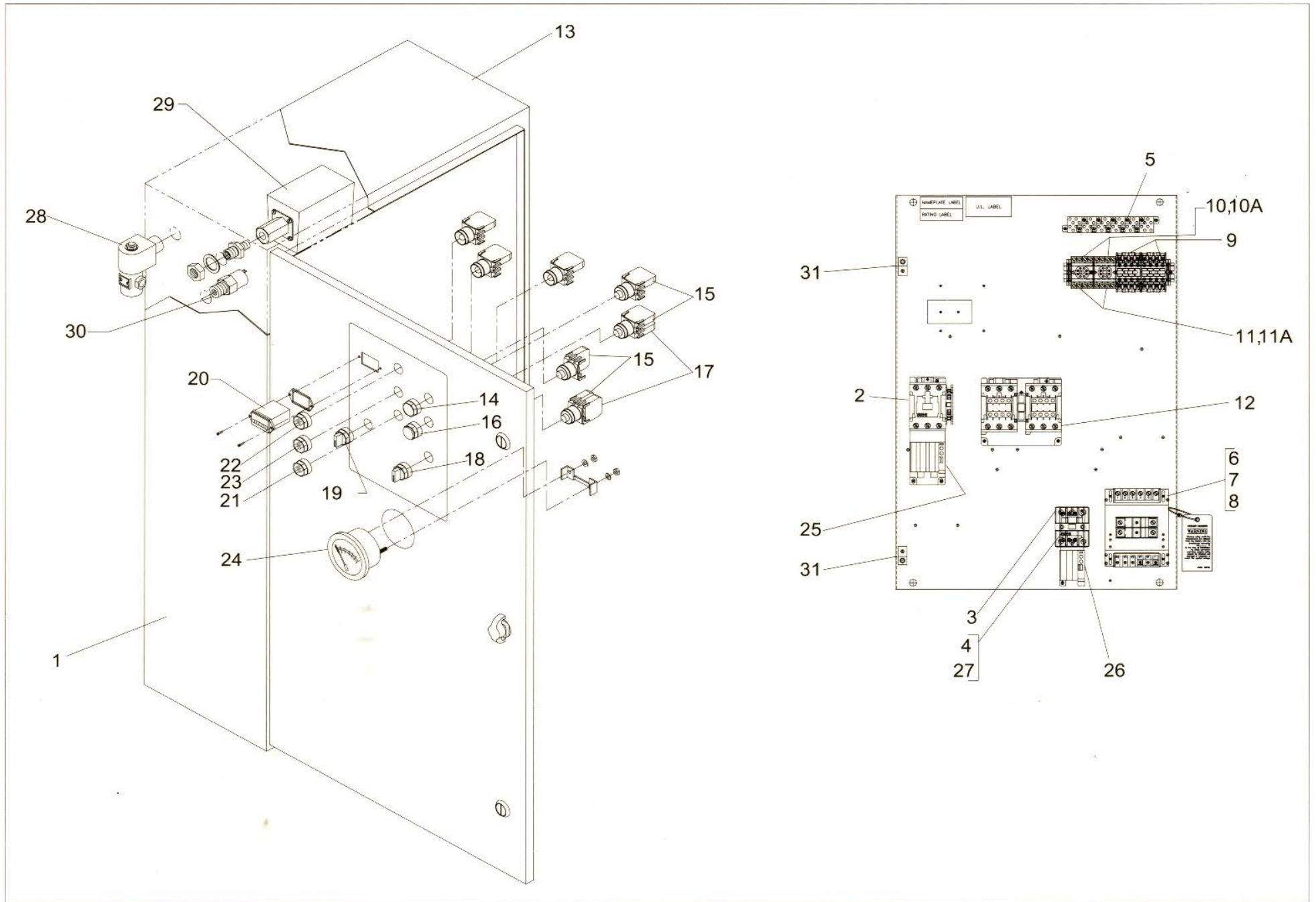


FIG.6 ELECTRICAL COMPONENTS GROUP – Y-DELTA

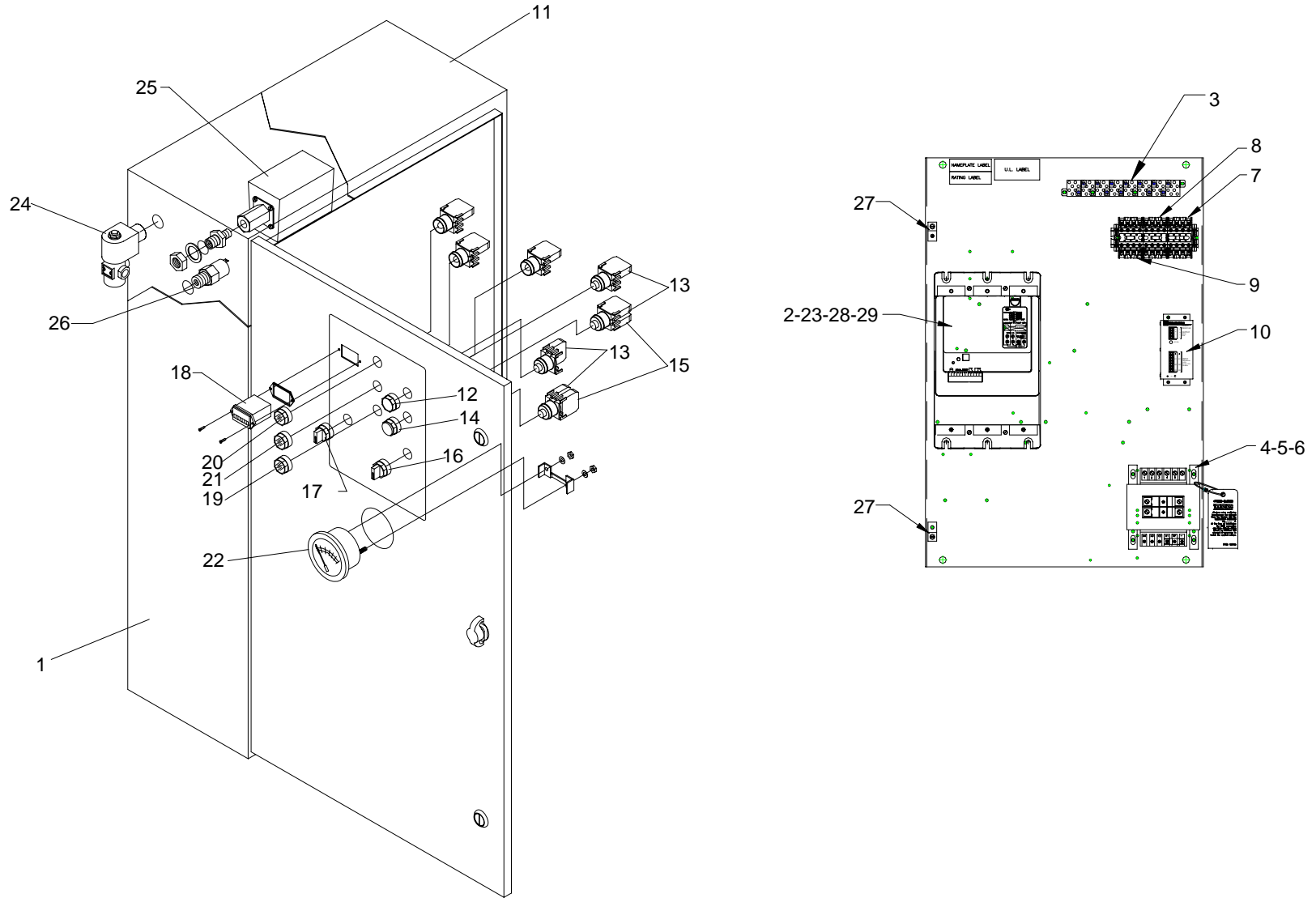
## PARTS LIST FOR ELECTRICAL COMPONENTS GROUP – Y-DELTA (REF. FIG.6)

ITEM NO.	DESCRIPTION	QTY.	R/S 200D
1	CONTROL PANEL ASSEMBLY		
2	STARTER WITH INTERCHANGABLE HEATERS (MAIN) SIZE "P" SIZE "N"		SEE TABLE 3
3	STARTER SIZE "E" WITH INTERCHANGABLE HEATERS	1	RN18965
4	FUSE BLOCK - 30A, 600V	1	RN18314-1
5	TERMINAL BLOCK	26	RN18339
6	TRANSFORMER, FUSED – 120V		
7	FUSE, TRANSFORMER, PRIMARY		SEE TABLE 3
8	FUSE, TRANSFORMER, SECONDARY		
9	RELAY, 4 POLE, 120V, DPDT	2	1330062
10	SOCKET	1	1330049
*10A	SOCKET ( <i>OPTIONAL</i> )	1	1330049
11	TIMER, 30 SEC., PLUG-IN	1	1330031
*11A	TIMER, 60 MIN., PLUG-IN ( <i>OPTIONAL</i> )	1	1330026
12	CONTACTOR REV. M1-S/M1-S WITH NO/NC		SEE TABLE 3
13	ENCLOSURE, 37.5 X 21.5 X 10	1	RN18059
14	PUSH BUTTON START SWITCH	1	RN18116
15	N.O. CONTACT BLOCK	4	RN18118-2
16	PUSH BUTTON STOP SWITCH (RED)	1	RN18118
17	N.C. CONTACT BLOCK	2	RN18118-1
*18	2 POSITION SELECTOR SWITCH (CONST/AUTO) ( <i>OPTIONAL</i> )	1	RN18104-9
19	2 POSITION SELECTOR SWITCH (LOAD/UNLOAD)	1	RN18104-7
20	HOURMETER	1	1330048
*21	AMBER LIGHT (STAND BY) ( <i>OPTIONAL</i> )	1	RN18218
22	RED LIGHT (STOP)	1	RN18217
23	GREEN LIGHT (POWER ON)	1	RN18219
24	TEMPERATURE GAUGE	1	RN18682
25	HEATER – MAIN		
26	HEATER – FAN		SEE TABLE 3
27	FUSE, FAN		
28	VALVE, SOLENOID	1	RN18422
29	SWITCH, PRESSURE – 100 PSI UNITS	1	RN18133-2
	SWITCH, PRESSURE – 125 PSI UNITS	1	RN18133-2
	SWITCH, PRESSURE – 150 PSI UNITS	1	RN18133-4
	SWITCH, PRESSURE – 175 PSI UNITS	1	RN18133-4
30	ANTI-START PRESSURE SWITCH	1	RN18134
31	LUG, GROUNDING	2	VE779
	WIRING DIAGRAM FOR Y-DELTA		CAB1665B1

\* PARTS FOR OPTIONAL TIME DUAL CONTROL

	ITEM NO	DESCRIPTION	QTY	200 VOLT	230 VOLT	460 VOLT	575 VOLT
R/S 200D	1	CONTROL PANEL ASSEMBLY	1			1330070	1330069
		SIZE "N" STARTER	1			N/A	RN18960
		SIZE "P" STARTER	1			RN18967	N/A
	12	CONTACTOR "N" REV. M1-S/M1-S W/ NO/NC	1			N/A	RN18540
		CONTACTOR "N"	1			RN18930-A	N/A
		CONTACTOR "P"	1			RN18931-A	N/A
	6	TRANSFOMER, 250VA,FUSED, 120V	1	N/A	N/A	N/A	1330054
		TRANSFOMER, 350VA,FUSED, 120V	1			1330057	N/A
	7	FUSE, TRANSFORMER, PRIMARY	2			RN18348-1	VE334
	8	FUSE, TRANSFORMER, SECONDARY	1			RN18355	RN18393
	24	HEATER - MAIN	1			RN18972	RN18989
	25	HEATER - FAN	1			RN18978	RN18978
	26	FUSE, FAN	3			RN18318-2	RN18318-1

Table 3: CONTROL PANEL, STARTERS, HEATERS AND FUSES – Y-DELTA



**FIG.7: ELECTRICAL COMPONENTS GROUP – SOFT START**

## PARTS LIST FOR ELECTRICAL COMPONENTS GROUP – SOFT STARTER (REF. FIG. 7)

ITEM NO.	DESCRIPTION	QTY.	R/S 200D W-C
1	CONTROL PANEL ASSEMBLY	1	1334001
2	IT SOFT STARTER SIZE "T" 304 AMP	1	1334002
3	TERMINAL BLOCK (4)	8	RN18339
4	TRANSFORMER, 350VA, FUSED -120V	1	1330057
5	FUSE, TRANSFORMER, PRIMARY ATQR3.5	2	RN18348-1
6	FUSE, TRANSFORMER, SECONDARY TRM4	1	RN18355
7	RELAY, 4 POLE, 120VAC, DPDT, 2NO/2NC	2	1330062
8	RELAY, 4 POLE, 120VAC, DPDT, 3NO/1NC	1	1334005
9	RELAY, 4 POLE, 24VDC, DPDT, 3NO/1NC	1	1334006
10	IT POWER SUPPLY 55W 120VAC/24VDC	1	1334004
11	ENCLOSURE, 37.5 X 21.5 X 10	1	RN18059
12	PUSH BUTTON START SWITCH	1	RN18116
13	N.O. CONTACT BLOCK	4	RN18118-2
14	PUSH BUTTON STOP SWITCH (RED)	1	RN18118
15	N.C. CONTACT BLOCK	2	RN18118-1
*16	2 POSITION SELECTOR SWITCH (CONST/AUTO) (OPTIONAL)	1	RN18104-9
17	2 POSITION SELECTOR SWITCH (LOAD/UNLOAD)	1	RN18104-7
18	HOURMETER	1	1330048
*19	AMBER LIGHT (STAND BY) (OPTIONAL)	1	RN18218
20	RED LIGHT (STOP)	1	RN18217
21	GREEN LIGHT (POWER ON)	1	RN18219
22	TEMPERATURE GAUGE	1	RN18683
23	IT LUG 200mm (2) 4/0 - 500	2	1334003
24	VALVE, SOLENOID	1	RN18422
25	SWITCH, PRESSURE – 100 PSI UNITS	1	RN18133-2
	SWITCH, PRESSURE – 125 PSI UNITS	1	RN18133-2
	SWITCH, PRESSURE – 150 PSI UNITS	1	RN18133-4
	SWITCH, PRESSURE – 175 PSI UNITS	1	RN18133-4
26	ANTI-START PRESSURE SWITCH	1	RN18134
27	LUG, GROUNDING	2	VE779
28	IT SURGE SUPPRESSOR 600V MOV	1	1334007
29	FAN/HOOD ACCESSORY	1	1334008
	WIRING DIAGRAM FOR SOFT START W/C		610036

\* PARTS FOR OPTIONAL TIME DUAL CONTROL

# NOTES

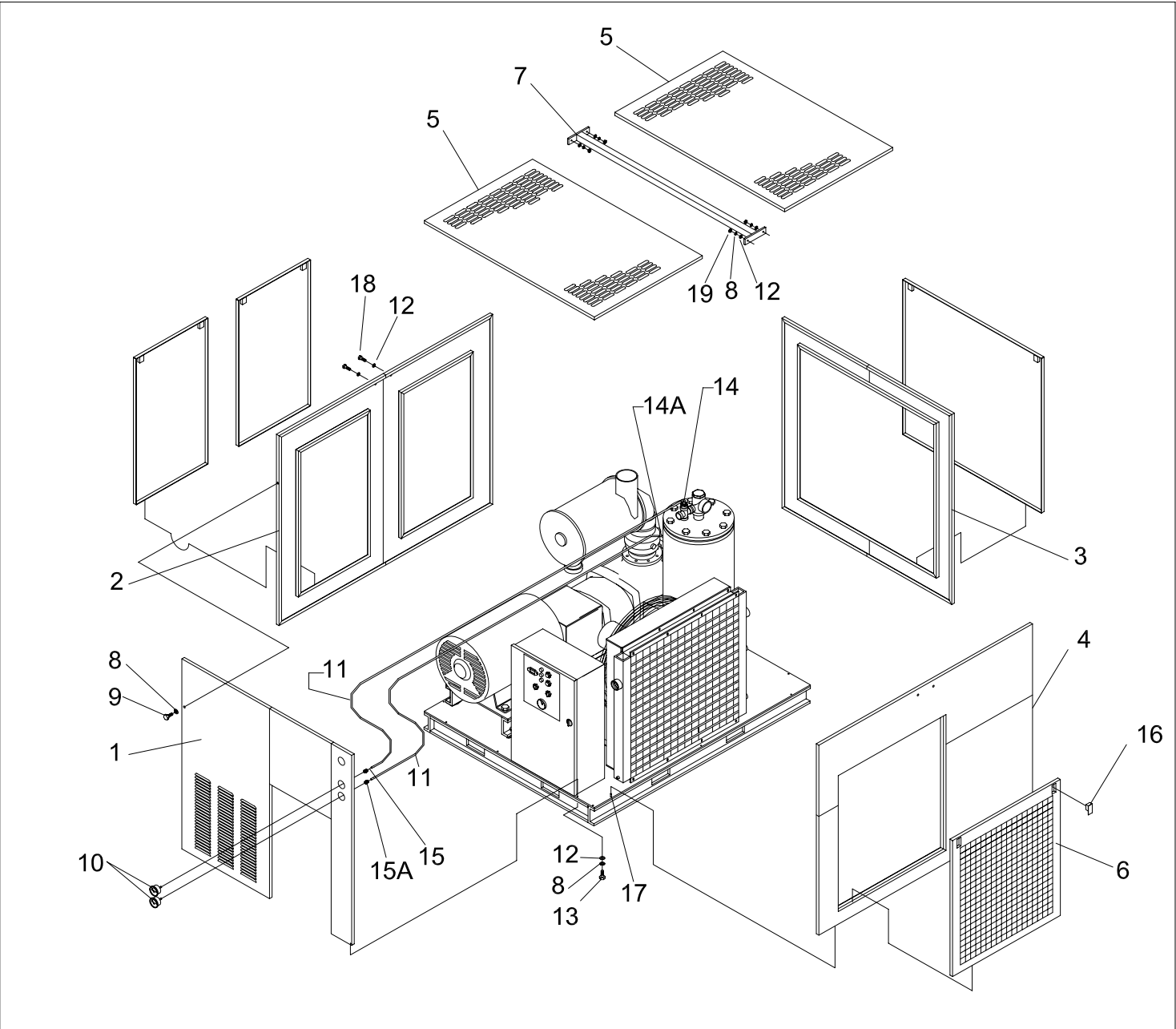


FIG.8 ENCLOSURE GROUP

**PARTS LIST FOR ENCLOSURE GROUP (REF. FIG.8)**

ITEM NO.	DESCRIPTION	QTY.	R/S 200D
1	FRONT PANEL ASSEMBLY	1	RN10064-1
2	LEFT SIDE PANEL ASSEMBLY	1	RN10064-4
3	REAR PANEL ASSEMBLY	1	RN10064-2
4	RIGHT SIDE PANEL ASSEMBLY	1	RN10064-3
5	TOP PANEL ASSEMBLY	2	RN10064-5
6	DOOR, COOLER ACCESS	1	RN10064-7
7	TOP CROSS SUPPORT, 77" X 2"	1	RN10064-6
8	LOCKWASHER – 5/16"	23	VH35H
9	SCREW, SOCKET HEAD CAP, BUTTON HEAD, 5/16-18 x 2-1/2" LG.	12	VH12HR
10	GAUGE, AIR PRESSURE, Ø2 1/2"	2	RN30322
11	TUBE, 1/4" NYLON, BLACK, #11	-	VA1626
12	WASHER, FLAT – 5/16"	15	VH32H
13	SCREW, HEX HEAD CAP, 5/16-18 x 1" LG.	7	VH12HH
14	CONNECTOR, ELBOW, QD, 1/4" NPT x 1/4" OD TUBE	1	VAA703
14A	CONNECTOR, ELBOW, COMPRES, 1/4" NPT x 1/4" OD TUBE	1	RN52150-2
15	CONNECTOR, STRAIGHT, QD, 1/4" NPTF x 1/4" OD TUBE	1	VAA730
15A	CONNECTOR, STRAIGHT, COMPRES, 1/4" NPTF x 1/4" OD TUBE	1	RN52150-7
16	LATCH	8	CS914
17	PIN	6	RN10050-9
18	SCREW, HEX HEAD CAP, 5/16-18 x 1" LG.	4	VH12HH
19	NUT, 5/16-18	4	VH15H
*20	FOAM, ACOUSTICAL, 1 1/2"	-	RN60419

\* PARTS NOT SHOWN ON DRAWING

# ROUTINE MAINTENANCE KITS

4,000-HOUR KIT

MODEL	WORKING PRESSURE			
	100 PSI	125 PSI	150 PSI	175 PSI
R/S 200D	VGC546	<	<	<

KIT INCLUDES:

- (1) SEPARATOR ELEMENT
- (8) OIL FILTER ELEMENT
- (2) HD MAIN ELEMENT
- (2) HD SAFETY ELEMENT

8,000-HOUR KIT

MODEL	WORKING PRESSURE			
	100 PSI	125 PSI	150 PSI	175 PSI
R/S 200D	VGC592	<	<	<

KIT INCLUDES:

- (2) SEPARATOR ELEMENT
- (16) OIL FILTER ELEMENT
- (4) HD MAIN ELEMENT
- (4) HD SAFETY ELEMENT

12,000-HOUR KIT

MODEL	WORKING PRESSURE			
	100 PSI	125 PSI	150 PSI	175 PSI
R/S 200D	VGC594	<	<	<

KIT INCLUDES:

- (3) SEPARATOR ELEMENT
- (24) OIL FILTER ELEMENT
- (6) HD MAIN ELEMENT
- (6) HD SAFETY ELEMENT
- (1) INLET VALVE KIT
- (1) THERMO BY-PASS VALVE KIT
- (1) MINIMUM PRESSURE VALVE KIT
- (1) COUPLING SLEEVE

# NOTES

**CURTIS – TOLEDO, INC.**

1905 KIENLEN AVE., ST. LOUIS, MO 63133  
TEL. (314) 383-1300 FAX (314) 381-1439  
E-MAIL: CURTISCOMP@AOL.COM