

CURTIS

R/S 125D & 150D

PARTS LIST

DIRECT DRIVE
WATER COOLED

LOT NUMBER:

R/S 125D LOT# 01
R/S 150D LOT# 01

HOW TO ORDER PARTS

Give name and part number as shown in parts list and serial number. Serial number is on nameplate attached to control panel of unit.

IMPORTANT

Make a permanent record of the Model and Serial numbers of your machine here. You'll save time and expense by including this reference identification on replacement parts

MODEL : _____

SER. NO.: _____

CURTIS-TOLEDO, INC.

1905 KIENLEN AVENUE, ST. LOUIS, MISSOURI 63133

Tel. (314) 383-1300

Fax (314) 381-1439

E-MAIL: INFO@CURTISTOLEDO.COM



DANGER

Air used for breathing or food processing must meet OSHA 29CFR 1910.134 or FDA 21CFR 178.3570 Regulations. Failure to do so may cause severe injury or death

INTRODUCTION

HOW TO USE THE PARTS LIST

Using the List of Illustrations obtain the figure number of the assembly in which your part is located. Go to the appropriate figure and locate your part on the illustration. Using the key number, find the part on the parts list.

LIST OF ILLUSTRATIONS

<u>Title</u>	<u>Page</u>
Major Components Group	2
Air And Oil Piping Group	6
Electrical Components Group (FVM)	10
Electrical Components Group (Y-Delta)	14
Enclosure Group	18
Routine Maintenance Kits	20



WARNING

Personal injury and/or equipment damage will result by failing to pay attention to the vital safety information and instruction in the operating and instruction manual. Carefully read, understand, and retain all safety information and instructions before operating this unit.

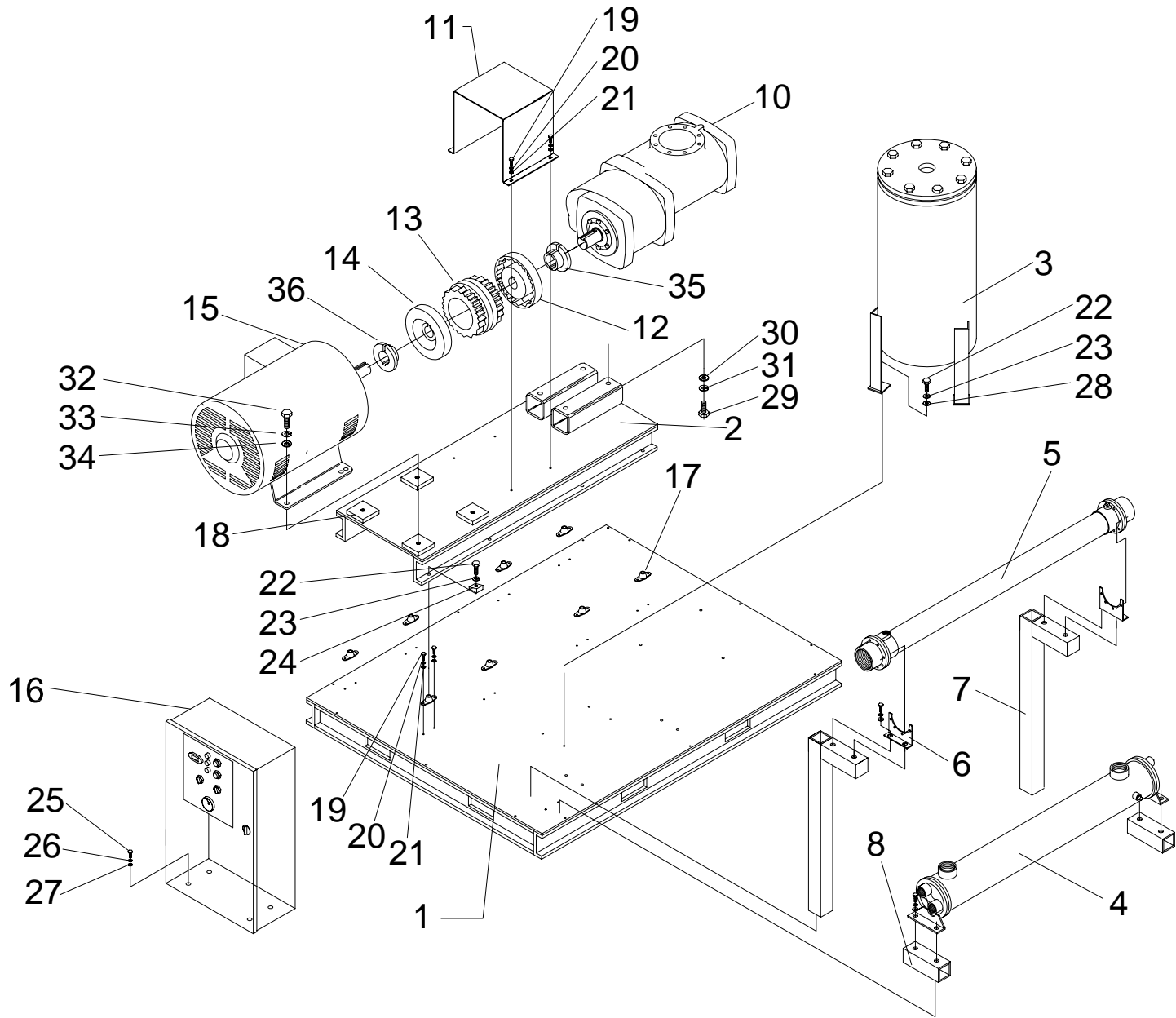


FIG.1 MAJOR COMPONENTS GROUP

PARTS LIST FOR MAJOR PARTS GROUP (REF. FIG. 1)

ITEM NO.	DESCRIPTION	QTY.	R/S 125D	R/S 150D
1	MAIN BASE ASSEMBLY	1	RN10108	<
2	SUB BASE ASSEMBLY	1	RN10108-7	<
3	SEPARATOR, OIL/AIR	1	RN10224-4	<
4	COOLER, OIL W/C	1	RN32262	RN32263
5	AFTERCOOLER, AIR W/C	1	RN33139	RN33140
6	BRACKET, MTG. AFTERCOOLER	2	RN33162	RN33163
7	BRACKET, AFTERCOOLER	2	RN33164	<
8	SPACER, OIL COOLER	2	RN10163	<
9				
10	AIR END	SEE TABLE 1		
11	COUPLING GUARD	1	RN10340-2	<
12	COUPLING, AIR END	SEE TABLE 1		
13	SLEEVE	SEE TABLE 1		
14	COUPLING, MOTOR	SEE TABLE 1		
*15	MOTOR, MAIN, 3 PHASE, 60 Hz, 230/460V, ODP	1	RN19125-2	RN19150-2
16	CONTROL PANEL	SEE TABLE 2 & 3		
17	MOUNT, VIBRATION	8	RN60255	<
18	MOTOR MOUNTING BLOCK	4	RN10135-4	N/A
19	HHCS 5/16-18 x 3/4", GRADE 5	28	VH12HF	<
20	LOCKWASHER, 5/16"	28	VH35H	<
21	WASHER, FLAT, 5/16"	28	VH32H	<
22	HHCS 1/2-20 X 1-1/4", GRADE 5	11	VH12NK	<
23	LOCKWASHER-KANTLINK-LIGHT, 1/2"	11	VH35P	<
24	WASHER-SQUARED BEVELED, 1/2"	8	VH50N	<
25	HHCS 3/8-16UNC X 1", GRADE 5	4	VH12KH	<
26	LOCKWASHER, 3/8"	4	VH35K	<
27	WASHER, FLAT, 3/8"	4	VH32K	<
28	WASHER, FLAT, 1/2"	3	VH32P	<
29	HHCS M20x2.5 X 35mm	4	VH1449	<
30	WASHER, FLAT, 20mm	4	VH1445	<
31	LOCKWASHER, 20mm	4	VH1446	<
32	HHCS 5/8-11 X 1 1/2", GRADE 5	4	VH12RM	<
33	LOCKWASHER, 5/8"	4	VH35R	<
34	WASHER, FLAT, 5/8"	4	VH32R	<
35	BUSHING, A/E COUPLING FLANGE	SEE TABLE 1		
36	BUSHING, MOTOR FLANGE	SEE TABLE 1		

*FOR MOTOR PART NUMBERS OTHER THAN STANDARD ODP, CONSULT FACTORY

MODEL	PRESSURE	A/E FLANGE	BUSHING	SLEEVE	MOT/ODP FLANGE	BUSHING	AIR END		MOTOR
							MODEL	PART #	FRAME
125D	100	RN14518-7	RN14181-1	RN14514-1	RN14518-7	RN14181-2	E75G	CS647-9	405TS
S12	125	RN14518-7	RN14181-1	RN14514-1	RN14518-7	RN14181-2	E75G	CS647-1	405TS
	150	RN14518-7	RN14181-1	RN14514-1	RN14518-7	RN14181-2	E75G	CS647-5	405TS
	175	RN14518-7	RN14181-1	RN14514-1	RN14518-7	RN14181-2	E75	CS647-11	405TS
150D	100	RN14518-7	RN14181-1	RN14514-1	RN14518-7	RN14181-3	E75G	CS647-3	444TS
S12	125	RN14518-7	RN14181-1	RN14514-1	RN14518-7	RN14181-3	E75G	CS647-2	444TS
	150	RN14518-7	RN14181-1	RN14514-1	RN14518-7	RN14181-3	E75G	CS647-4	444TS
	175	RN14518-7	RN14181-1	RN14514-1	RN14518-7	RN14181-3	E75G	CS647-1	444TS

TABLE 1: A/E, A/E FLANGE, SLEEVE, MOTOR FLANGE, BUSHING & MOTOR FRAME

NOTES

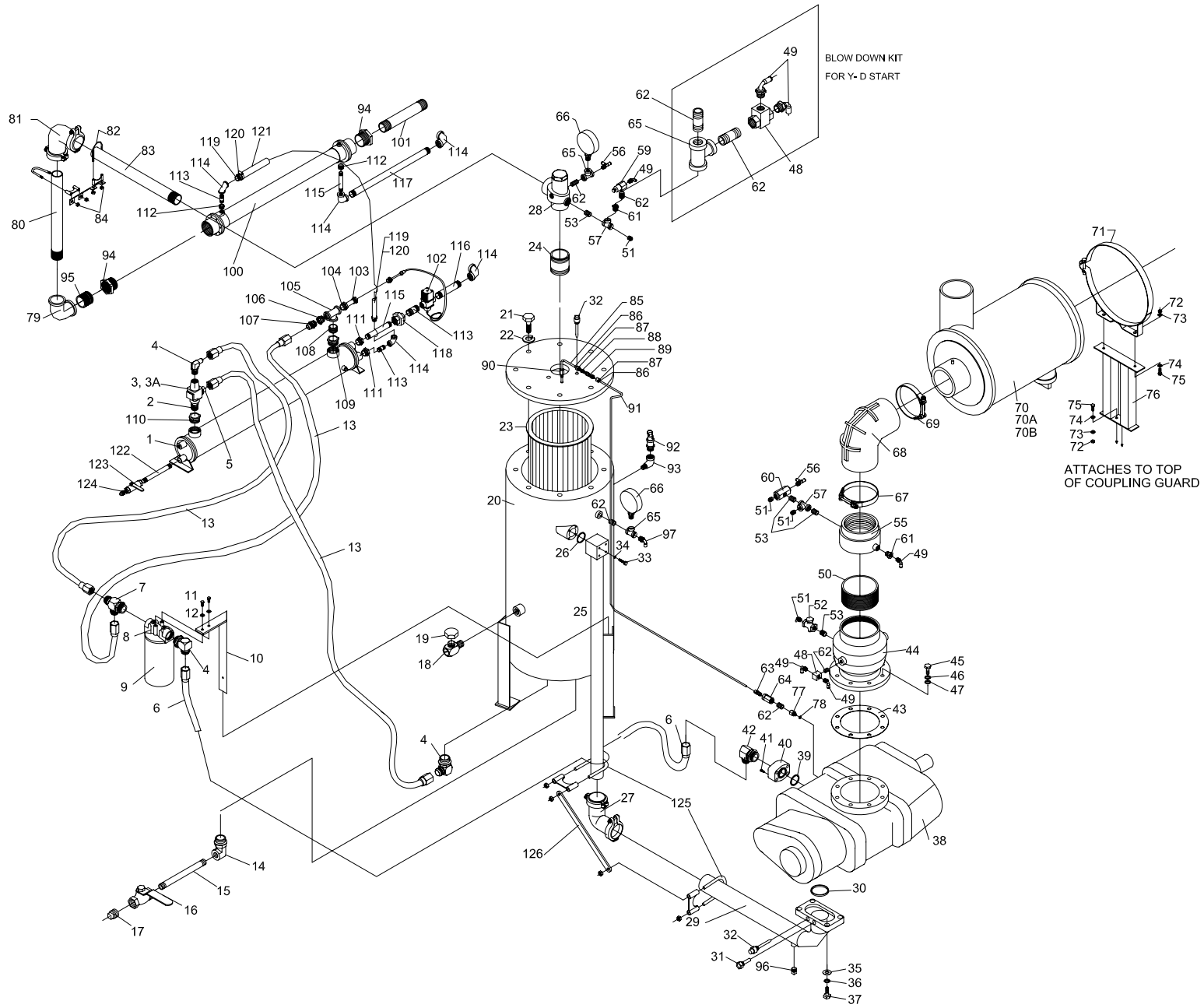


FIG.2 WATER AND OIL PIPING GROUP

PARTS LIST FOR AIR AND OIL PIPING GROUP (REF. FIG. 2)

ITEM NO.	DESCRIPTION	QTY.	R/S 125D	R/S 150D
1	COOLER, OIL W/C	1	RN32262	RN32263
2	ADAPTER, 1 1/4"NPT X SAE20	1	VAD818	<
3	THERMO VALVE SAE 20, 170F	1	RN42425	<
3A	REPAIR KIT, THERMO VALVE	1	RN42425-1	<
4	CONNECTOR, ELBOW, 1 1/4" 37FL X SAE 20	3	VAB710	<
5	CONNECTOR, STR., 1 1/4" 37FL X SAE 20	1	VAB720	<
6	HOSE ASSEMBLY, #20 X 31"	2	RN60144	<
7	BRANCH TEE, STRAIGHT THREAD, SAE 20	1	VAB713	<
8	OIL FILTER HEAD	1	RN28108	<
9	OIL FILTER ELEMENT	1	RN28205	<
10	BRACKET, OIL FILTER	1	CS899	<
11	BOLT, HHCS 5/16-18 X 3/4"	2	VH12HF	<
12	LOCKWASHER, 5/16	2	VH35H	<
13	HOSE ASSEMBLY, #20 X 58"	2	RN60164	<
14	ADAPTOR, ELBOW, FEMALE 3/4"NPT X SAE 12	1	RN60078	<
15	CONNECTOR, ELBOW, 1 1/4" 37FL X SAE 20	3	VAB710	<
15	NIPPLE, 3/4" X 12"	1	VA13ESA	<
16	VALVE, 3/4"	1	VV540	<
17	PIPE PLUG, 3/4"	1	VA01ER	<
18	OIL FILL & SIGHT GLASS	1	RN52171	<
19	OIL FILL CAP	1	CS741	<
20	SEPARATOR, AIR & OIL	1	RN10224-4	<
21	BOLT, 7/8-9 X 2 1/4"	8	VH12VQ	<
22	LOCKWASHER, 7/8"	8	VH35U	<
23	SEPARATOR ELEMENT	1	RN27527	<
24	NIPPLE, 2"NPT X 4"	1	VA24JGA	<
25	FLANGE-PIPE ASSEMBLY	1	RN10678-7	<
26	O-RING, #237	1	RN10688-1	<
27	COUPLING, FLEX, 3" ELBOW, LONG	1	RN60222-3	<
28	MIN. VALVE PRESS, 2"	1	RN42130	<
29	FLANGE ASSEMBLY, E75 DISCHARGE	1	RN10678-6	<
30	O-RING, #250	1	RN10678-4	<
31	THERMOWELL, 1/2"NPT	1	RN18681	<
32	TEMPERATURE SWITCH	2	RN18657	<
33	HHCS 5/8-11 X 6"	4	VH1465	<
34	LOCKWASHER, 5/8"	4	VH35R	<
35	WASHER, FLAT, M20	4	VH1445	<
36	LOCKWASHER, M20	4	VH1446	<
37	HHCS M20 X 2.5 X 35mm	4	VH1443	<
38	AIR END	SEE TABLE 1		
39	O-RING, #225	1	RN10672-1	<
40	ANCHOR FLANGE, SAE 24	1	RN10672-2	<
41	HHCS, M12 X 1.75 X 60mm	4	VH1442	<
42	CONNECTOR, ELBOW, 1 1/4" 37FL X SAE 24	1	VAB723	<
43	INLET GASKET	1	RN10685-2	<
44	INLET VALVE, 6"	1	RN24585	<
44	INLET VALVE, 6"	1	RN24585	<
45	HEX HEAD BOLT, M16 X 2.0 X 45mm	8	VH1440	<
46	LOCKWASHER, M16	8	VH1234	<
47	WASHER FLAT, M16	8	VH1238	<
48	VALVE, SHUTTLE 1/4"	1	RN42105	<
49	1/4", QD, ELBOW	4	VAA703	<
50	NIPPLE, 6"NPT, CL.	1	VA13RAA	<
51	CONNECTOR, 3/8"OD X 1/2"NPT, QD, STR.	4	VAA785	<
52	VALVE, CHECK 1/2"	1	VV824	<
53	NIPPLE, 1/2", CLOSE	4	VA13DAB	<
54				
55	COUPLING, 6"	1	RN24579-4	<
56	RUN TEE, 1/4"	2	VAB746	<
57	TEE, 1/2"	2	VA10DF	<
58				
59	MODULATION VALVE, 1/4"	1	RN42613	<
60	BLOWDOWN VALVE, 1/2"	1	RN18425	<

PARTS LIST FOR AIR AND OIL PIPING GROUP (REF. FIG. 2)

ITEM NO.	DESCRIPTION	QTY.	R/S 125D	R/S 150D
61	BUSHING, 1/2" X 1/4"	2	VA12DBP	<
62	NIPPLE, 1/4", CLOSE	3	VA13BAA	<
63	CONNECTOR, 1/4", COMPRESSION W/ 9/64" ORIFICE	1	RN52137	<
64	VALVE, CHECK IN-LINE, 1/4"	1	VV834	<
65	TEE, 1/4"	2	VA10BF	<
66	PRESSURE GAGE	2	RN30323	<
67	T-BAR CLAMP, 8"ID	1	RN24084-6	<
68	ELBOW, 90 DEG, REDUCING 7" X 6" ID	1	RN24084-9	<
69	T-BAR CLAMP, 7"ID	1	RN24084-5	<
70	AIR FILTER, HEAVY DUTY	1	RN24084	<
70A	FILTER ELEMENT, PRIMARY	1	RN24084-1	<
70B	FILTER ELEMENT, SAFETY	1	RN24084-2	<
71	BAND MOUNTING	1	RN24084-3	<
72	NUT, 3/8"	2	VH15K	<
73	LOCKWASHER, 3/8"	4	VH35K	<
74	WASHER, FLAT 3/8"	4	VH32K	<
75	HHCS 3/8-16 X 1"	4	VH12KH	<
76	BRACKET, HDF	1	RN10150	<
77	ADAPTER, 1/8" BSPP MALE X 1/4" NPT FEMALE	1	VAA745	<
78	WASHER (BOND SEAL)	1	VAA746	<
79	ELBOW, 2"NPT	1	VA06JP	<
80	NIPPLE, 2"NPT X 18 1/2"	1	VAB896	<
81	COUPLING, 2", 90 DEG	1	RN60221	<
82	U-BOLT, 2-1/4"	1	VH2211	<
83	NIPPLE, 2"NPT X 21-1/4"	1	VAD813	<
84	BRACE	2	CS897	<
85	TUBE, SCAVENGER LINE	1	OFE961	<
86	SLEEVE, 1/4"	2	VAA757	<
87	NUT, 1/4"	2	VAA756	<
88	UNION, 1/4"	1	VAA701	<
89	SIGHT GLASS	1	RN52170	<
90	CONNECTOR, COMPRESSION	1	RN52151	<
91	TUBE, SCAVENGER LINE	1	OFE998	<
92	VALVE, SAFETY, 1"			
	100 PSI, 125 PSI UNIT – 150 PSI VALVE	1	RN42825	<
	150 PSI UNIT – 175 PSI VALVE	1	RN42826	<
	175 PSI UNIT – 200 PSI VALVE	1	RN42827	<
93	STREET ELBOW, 1"	1	VA08FF	<
94	BUSHING, 3"NPT X 2"NPT	2	VA12LJP	<
95	NIPPLE, 2"NPT, CLOSE	1	VA24JAA	<
96	PIPE PLUG, 1/2"NPT	1	VA01DR	<
97	CONNECTOR, COMPR. ELBOW, 1/4"OD X 1/4"NPT	1	RN52150-2	<
98	TUBE, 1/4" NYLON #11 (NOT SHOWN)		VA1626	<
99	TUBE, 3/8" NYLON #11 (NOT SHOWN)		VA1628	<
100	AFTERCOOLER, AIR W/C	1	RN33139	RN33140
101	NIPPLE, 2"NPT X 21"	1	VAD822	<
102	VALVE, WATER CONTROL, 1"	1	CF1556	<
103	PROBE WELL, 3/4"NPT X 6"	1	CF1560	<
104	BUSHING, 1 1/2"NPT X 3/4"NPT	1	VA12HEF	<
105	TEE, 1 1/2"NPT	1	VA10HF	<
106	BUSHING, 1 1/2"NPT X 1 1/4"NPT	1	VA12HGP	<
107	CONNECTOR, 1 1/4"OD 37' FL X 1 1/4"NPT	1	VAB721	<
108	NIPPLE, 1 1/2"NPT, SHORT	1	VA13HBA	<
109	BUSHING, 3"NPT X 1 1/2"NPT	1	VA12LHP	<
110	BUSHING, 3"NPT X 1 1/4"NPT	1	VA12LGP	<
111	BUSHING, 2"NPT X 1"NPT, GALV.	2	N/A	VA12JFB
112	BUSHING, 1 1/2"NPT X 1"NPT, GALV.		VA12HFQ (4)	VA12HFQ (2)
113	NIPPLE, 1"NPT, CL., GALV	3	VA13FAB	<
114	ELBOW, 90 DEG., 1"NPT, GALV.	5	VA06FB	<
115	NIPPLE, 1"NPT X 3", GALV.	2	VA13FEB	<

PARTS LIST FOR AIR AND OIL PIPING GROUP (REF. FIG. 2)

ITEM NO.	DESCRIPTION	QTY.	R/S 125D	R/S 150D
116	NIPPLE, 1"NPT X 12", GALV.	1	VA13FSB	<
117	NIPPLE, 1"NPT X 22", GALV.	1	VAD828	<
118	UNION, 1"NPT, BRASS	1	VAD829	<
119	NIPPLE, 1"OD X 1"NPT MALE, BRASS	2	RN60005	<
120	HOSE CLAMP, WORM DRIVE	2	RN60006	<
121	HOSE, MULTIPURPOSE, 1"ID	8'	RN60004	<
122	NIPPLE, 3/8"NPT X 4"	1	VA13CGB	<
123	BALL VALVE, 3/8"	2	VV539	<
124	PLUG, 3/8"	2	VA01CA	<
125	U-BOLT 3-1/2", 3/8"-16 FULL CR.	2	VH2212	<
126	STRAP, SUPPORT	1	RN10166	<
	<u>BLOWDOWN KIT FOR Y-D START</u>		CY41M	<
48	VALVE, SHUTTLE 1/4"	1	RN42105	<
49	1/4", QD, ELBOW	2	VAA703	<
62	NIPPLE, 1/4", CLOSE	2	VA13BAA	<
65	TEE, 1/4"	1	VA10BF	<

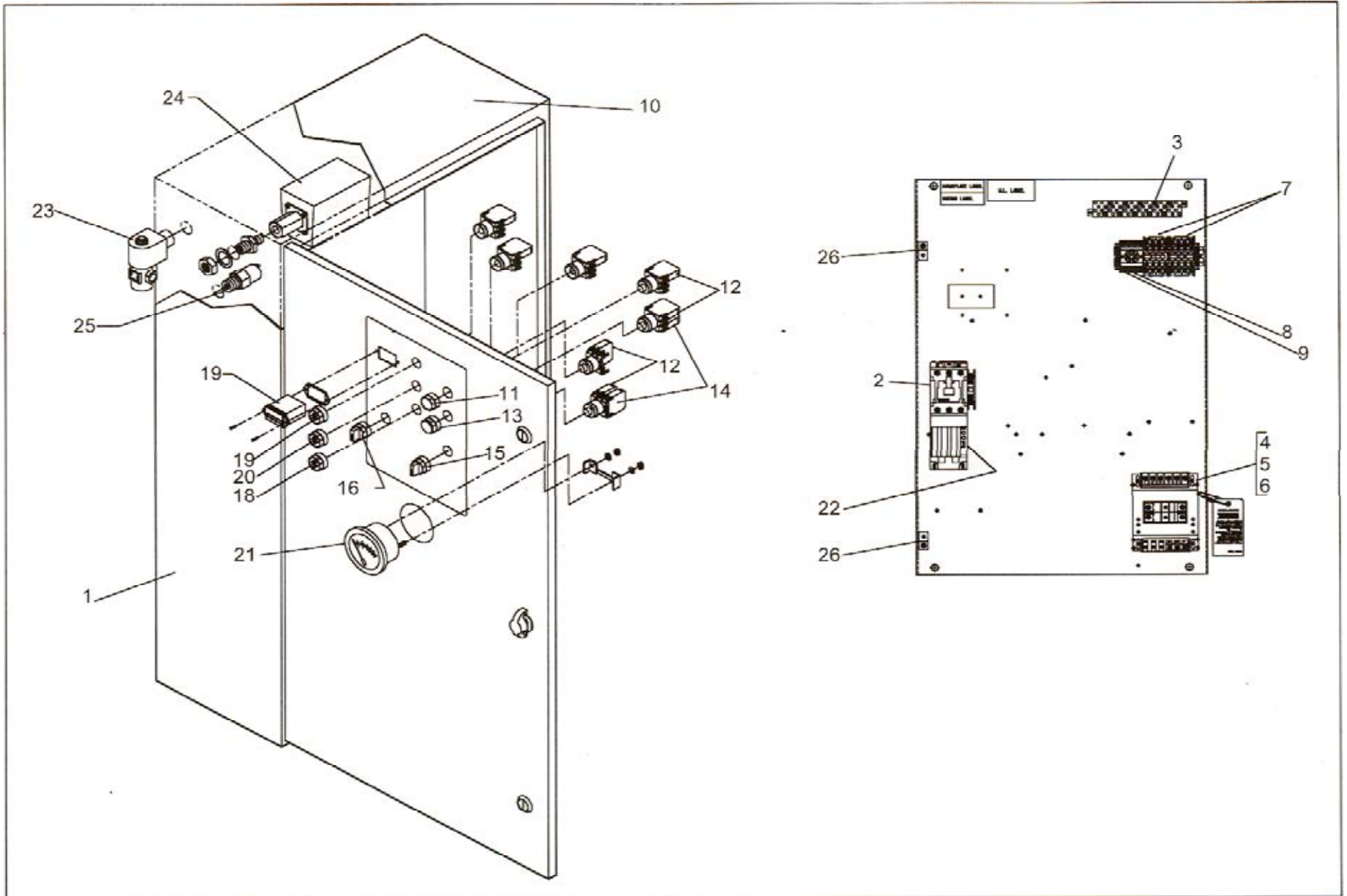


Figure 3: Electrical Components Group - FVM

PARTS LIST FOR ELECTRICAL COMPONENTS GROUP – FVM (REF. FIG. 3)

ITEM NO.	DESCRIPTION	QTY.	R/S 125D	R/S 150D
1	CONTROL PANEL ASSEMBLY			
2	STARTER WITH INTERCHANGEABLE HEATERS (MAIN) SIZE "S" SIZE "N"		SEE TABLE 2	
3	TERMINAL BLOCK	26	RN18339	<
4	TRANSFORMER, FUSED -120V			
5	FUSE, TRANSFORMER, PRIMARY		SEE TABLE 2	
6	FUSE, TRANSFORMER, SECONDARY			
7	RELAY, 4 POLE, 120V, DPDT	2	1330062	<
*8	SOCKET (OPTIONAL)	1	1330049	<
*9	TIMER, 60 MIN., PLUG-IN (OPTIONAL)	1	1330026	<
10	ENCLOSURE, 37.5 X 21.5 X 10	1	RN18059	<
11	PUSH BUTTON START SWITCH	1	RN18116	<
12	N.O. CONTACT BLOCK	4	RN18118-2	<
13	PUSH BUTTON STOP SWITCH (RED)	1	RN18118	<
14	N.C. CONTACT BLOCK	2	RN18118-1	<
*15	2 POSITION SELECTOR SWITCH (CONST/AUTO) (OPTIONAL)	1	RN18104-9	<
16	2 POSITION SELECTOR SWITCH (LOAD/UNLOAD)	1	RN18104-7	<
17	HOURMETER	1	1330048	<
*18	AMBER LIGHT (STAND BY) (OPTIONAL)	1	RN18218	<
19	RED LIGHT (STOP)	1	RN18217	<
20	GREEN LIGHT (POWER ON)	1	RN18219	<
21	TEMPERATURE GAUGE	1	RN18683	<
22	HEATER - MAIN		SEE TABLE 2	
23	VALVE, SOLENOID	1	RN18422	<
24	SWITCH, PRESSURE – 100 PSI UNITS	1	RN18133-2	<
	SWITCH, PRESSURE – 125 PSI UNITS	1	RN18133-2	<
	SWITCH, PRESSURE – 150 PSI UNITS	1	RN18133-4	<
	SWITCH, PRESSURE – 175 PSI UNITS	1	RN18133-4	<
25	ANTI-START PRESSURE SWITCH	1	RN18134	<
26	LUG, GROUNDING	2	VE779	<
	WIRING DIAGRAM FOR FVM		610005	<

* PARTS FOR OPTIONAL TIME DUAL CONTROL

	ITEM NO	DESCRIPTION	QTY	200 VOLT	230 VOLT	460 VOLT	575 VOLT
R/S 125D	1	CONTROL PANEL ASSEMBLY	1			1330104	1330103
	2	SIZE "S" STARTER	1			RN18860	N/A
		SIZE "N" STARTER	1			N/A	RN18963
	4	TRANSFORMER, 250VA,FUSED, 120V	1			1330054	1330054
	5	FUSE, TRANSFORMER, PRIMARY	2	N/A	N/A	VE334	VE334
	6	FUSE, TRANSFORMER, SECONDARY	1			RN18393	RN18393
	22	HEATER - MAIN	1			RN18972	RN18990
R/S 150D	1	CONTROL PANEL ASSEMBLY	1			1330104	1330104
	2	SIZE "S" STARTER	1			RN18860	RN18860
	4	TRANSFORMER, 250VA,FUSED, 120V	1			1330054	1330054
	5	FUSE, TRANSFORMER, PRIMARY	2	N/A	N/A	VE334	VE334
	6	FUSE, TRANSFORMER, SECONDARY	1			RN18393	RN18393
		HEATER - MAIN	1			RN18973	RN18972
	22						

Table 2: CONTROL PANEL, STARTER, HEATER AND FUSES - FVM

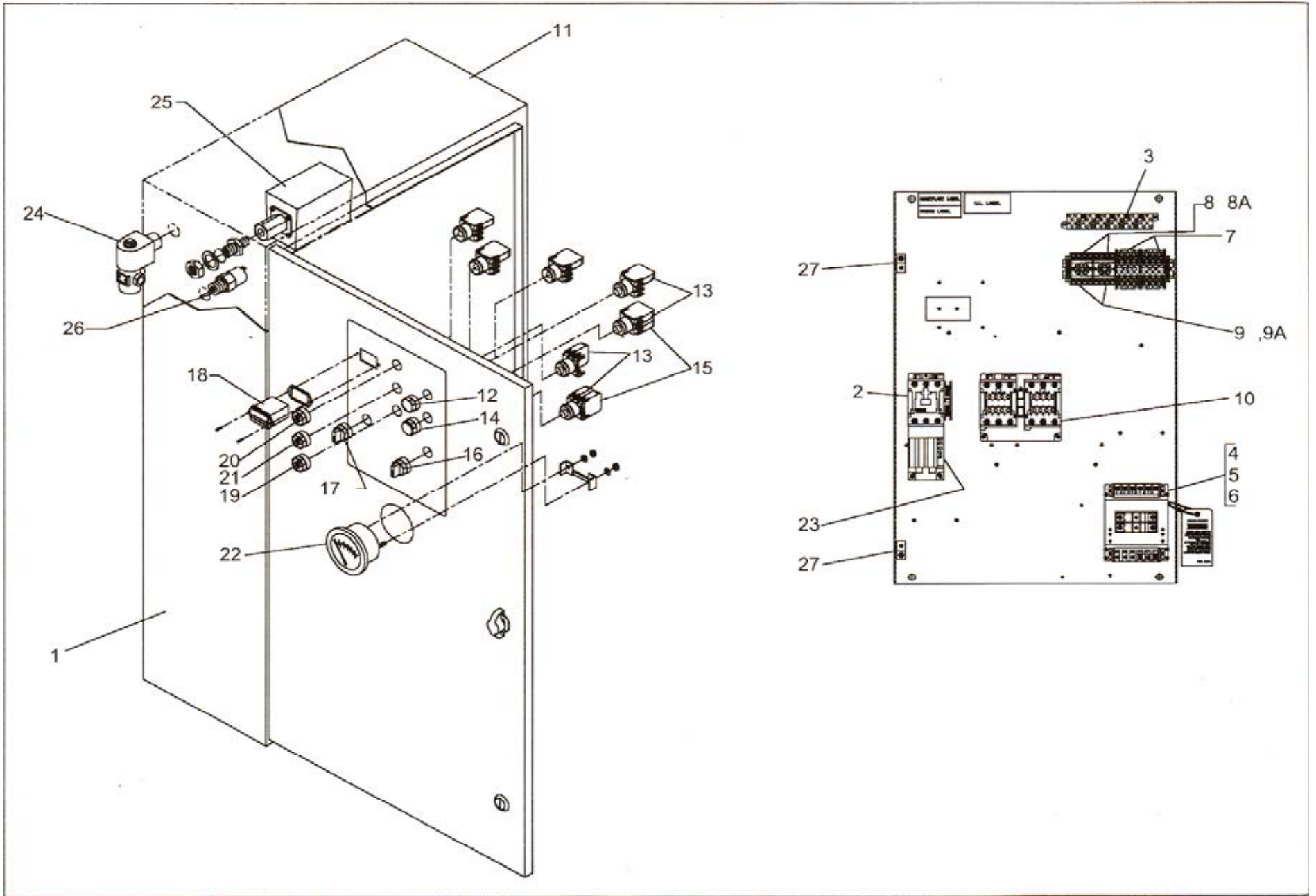


Figure 4: Electrical Components Group – Y-Delta

PARTS LIST FOR ELECTRICAL COMPONENTS GROUP – Y-DELTA (REF. FIG. 4)

ITEM NO.	DESCRIPTION	QTY.	R/S 125D	R/S 150D
1	CONTROL PANEL ASSEMBLY			
2	STARTER WITH INTERCHANGEABLE HEATERS (MAIN)			
	SIZE "P"		SEE TABLE 3	
	SIZE "N"		SEE TABLE 3	
3	TERMINAL BLOCK	26	RN18339	<
4	TRANSFORMER, FUSED -120V			
5	FUSE, TRANSFORMER, PRIMARY			
6	FUSE, TRANSFORMER, SECONDARY			
7	RELAY, 4 POLE, 120V, DPDT	2	1330062	<
8	SOCKET	1	1330049	<
*8A	SOCKET (OPTIONAL)	1	1330049	<
9	TIMER, 30 SEC., PLUG-IN	1	1330031	<
*9A	TIMER, 60 MIN., PLUG-IN (OPTIONAL)	1	1330026	<
10	CONTACTOR REV. M1-S/M1-S WITH NO/NC			
			SEE TABLE 3	
11	ENCLOSURE, 37.5 X 21.5 X 10	1	RN18059	<
12	PUSH BUTTON START SWITCH	1	RN18116	<
13	N.O. CONTACT BLOCK	4	RN18118-2	<
14	PUSH BUTTON STOP SWITCH (RED)	1	RN18118	<
15	N.C. CONTACT BLOCK	2	RN18118-1	<
*16	2 POSITION SELECTOR SWITCH (CONST/AUTO) (OPTIONAL)	1	RN18104-9	<
17	2 POSITION SELECTOR SWITCH (LOAD/UNLOAD)	1	RN18104-7	<
18	HOURMETER	1	1330048	<
*19	AMBER LIGHT (STAND BY) (OPTIONAL)	1	RN18218	<
20	RED LIGHT (STOP)	1	RN18217	<
21	GREEN LIGHT (POWER ON)	1	RN18219	<
22	TEMPERATURE GAUGE	1	RN18683	<
23	HEATER			
			SEE TABLE 3	
24	VALVE, SOLENOID	1	RN18422	<
25	SWITCH, PRESSURE – 100 PSI UNITS	1	RN18133-2	<
	SWITCH, PRESSURE – 125 PSI UNITS	1	RN18133-2	<
	SWITCH, PRESSURE – 150 PSI UNITS	1	RN18133-4	<
	SWITCH, PRESSURE – 175 PSI UNITS	1	RN18133-4	<
26	ANTI-START PRESSURE SWITCH	1	RN18134	<
27	LUG, GROUNDING	2	VE779	<
	WIRING DIAGRAM FOR Y-DELTA		610029	<

* PARTS FOR OPTIONAL TIME DUAL CONTROL

	ITEM NO	DESCRIPTION	QTY	200 VOLT	230 VOLT	460 VOLT	575 VOLT
R/S 125D	1	CONTROL PANEL ASSEMBLY	1	N/A	1330070	1330069	1330069
	2	SIZE "P" STARTER	1		RN18967	N/A	N/A
		SIZE "N" STARTER	1		N/A	RN18960	RN18960
	12	CONTACTOR "N" REV. M1-S/M1-S W/ NO/NC	1		RN18931-A	RN18540	RN18540
	4	TRANSFOMER, 250VA,FUSED, 120V	1		RN18930-A		
	5	FUSE, TRANSFORMER, PRIMARY	2		1330077	1330054	1330054
	6	FUSE, TRANSFORMER, SECONDARY	1		RN18348-1	VE334	VE334
23	HEATER, SET	1	RN18355	RN18393	RN18393		
				RN18973	RN18989	RN18988	
R/S 150D	1	CONTROL PANEL ASSEMBLY	1	N/A	N/A	1330069	1330069
	2	SIZE "N" STARTER	1			RN18960	RN18960
	12	CONTACTOR "N" REV. M1-S/M1-S W/ NO/NC	1			RN18540	RN18540
	4	TRANSFOMER, 250VA,FUSED, 120V	1			1330054	1330054
	5	FUSE, TRANSFORMER, PRIMARY	2			VE334	VE334
	6	FUSE, TRANSFORMER, SECONDARY	1			RN18393	RN18393
	23	HEATER - MAIN	1			RN18989	RN18988

Table 3: CONTROL PANEL, STARTERS, HEATERS AND FUSES – Y-DELTA

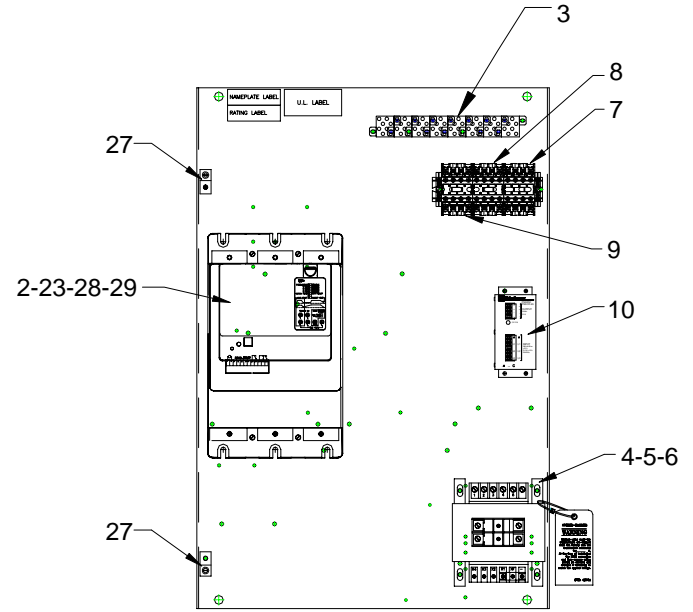
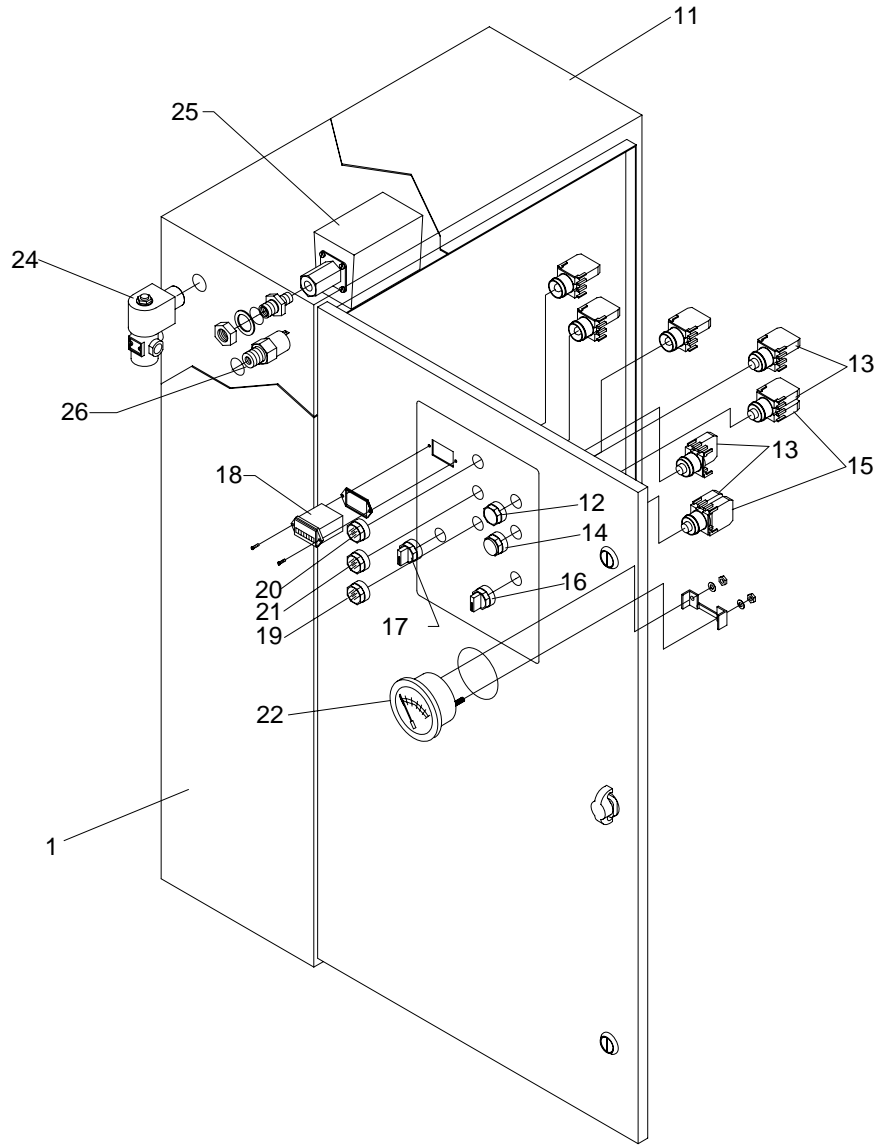


Figure 5: Electrical Components Group – Soft Start

PARTS LIST FOR ELECTRICAL COMPONENTS GROUP – Y-DELTA (REF. FIG. 5)

ITEM NO.	DESCRIPTION	QTY.	R/S 150D
1	CONTROL PANEL ASSEMBLY	1	1334001
2	IT SOFT STARTER SIZE "T" 304 AMP	1	1334002
3	TERMINAL BLOCK (4)	8	RN18339
4	TRANSFORMER, 350VA, FUSED -120V	1	1330057
5	FUSE, TRANSFORMER, PRIMARY ATQR3.5	2	RN18348-1
6	FUSE, TRANSFORMER, SECONDARY TRM4	1	RN18355
7	RELAY, 4 POLE, 120VAC, DPDT, 2NO/2NC	2	1330062
8	RELAY, 4 POLE, 120VAC, DPDT, 3NO/1NC	1	1334005
9	RELAY, 4 POLE, 24VDC, DPDT, 3NO/1NC	1	1334006
10	IT POWER SUPPLY 55W 120VAC/24VDC	1	1334004
11	ENCLOSURE, 37.5 X 21.5 X 10	1	RN18059
12	PUSH BUTTON START SWITCH	1	RN18116
13	N.O. CONTACT BLOCK	4	RN18118-2
14	PUSH BUTTON STOP SWITCH (RED)	1	RN18118
15	N.C. CONTACT BLOCK	2	RN18118-1
*16	2 POSITION SELECTOR SWITCH (CONST/AUTO) (OPTIONAL)	1	RN18104-9
17	2 POSITION SELECTOR SWITCH (LOAD/UNLOAD)	1	RN18104-7
18	HOURMETER	1	1330048
*19	AMBER LIGHT (STAND BY) (OPTIONAL)	1	RN18218
20	RED LIGHT (STOP)	1	RN18217
21	GREEN LIGHT (POWER ON)	1	RN18219
22	TEMPERATURE GAUGE	1	RN18683
23	IT LUG 200mm (2) 4/0 - 500	2	1334003
24	VALVE, SOLENOID	1	RN18422
25	SWITCH, PRESSURE – 100 PSI UNITS	1	RN18133-2
	SWITCH, PRESSURE – 125 PSI UNITS	1	RN18133-2
	SWITCH, PRESSURE – 150 PSI UNITS	1	RN18133-4
	SWITCH, PRESSURE – 175 PSI UNITS	1	RN18133-4
26	ANTI-START PRESSURE SWITCH	1	RN18134
27	LUG, GROUNDING	2	VE779
28	IT SURGE SUPPRESSOR 600V MOV	1	1334007
29	FAN/HOOD ACCESSORY	1	1334008
	WIRING DIAGRAM FOR SOFT START W/C		610036

* PARTS FOR OPTIONAL TIME DUAL CONTROL

ROUTINE MAINTENANCE KITS

4,000-HOUR KIT

MODEL	WORKING PRESSURE			
	100 PSI	125 PSI	150 PSI	175 PSI
R/S 125D	VGC545	<	<	<
R/S 150D	VGC545	<	<	<

KIT INCLUDES:

- (1) SEPARATOR ELEMENT
- (4) OIL FILTER ELEMENT
- (2) HD MAIN ELEMENT
- (2) HD SAFETY ELEMENT

8,000-HOUR KIT

MODEL	WORKING PRESSURE			
	100 PSI	125 PSI	150 PSI	175 PSI
R/S 125D	VGC591	<	<	<
R/S 150D	VGC591	<	<	<

KIT INCLUDES:

- (2) SEPARATOR ELEMENT
- (8) OIL FILTER ELEMENT
- (4) HD MAIN ELEMENT
- (4) HD SAFETY ELEMENT

12,000-HOUR KIT

MODEL	WORKING PRESSURE			
	100 PSI	125 PSI	150 PSI	175 PSI
R/S 125D	VGJ503	<	<	<
R/S 150D	VGJ503	<	<	<

KIT INCLUDES:

- (3) SEPARATOR ELEMENT
- (12) OIL FILTER ELEMENT
- (6) HD MAIN ELEMENT
- (6) HD SAFETY ELEMENT
- (1) INLET VALVE KIT
- (1) THERMO BY-PASS VALVE KIT
- (1) MINIMUM PRESSURE VALVE KIT
- (1) COUPLING SLEEVE

NOTES

CURTIS – TOLEDO, INC.

1905 KIENLEN AVE., ST. LOUIS, MO 63133
TEL. (314) 383-1300 FAX (314) 381-1439
E-MAIL: CURTISCOMP@AOL.COM