

CURTIS

R/S 125D & 150D

PARTS LIST

DIRECT DRIVE

AIR COOLED

LOT NUMBER:

R/S 125D LOT# 14
R/S 150D LOT# 14

HOW TO ORDER PARTS

Give name and part number as shown in parts list and serial number. Serial number is on nameplate attached to control panel of unit.

IMPORTANT

Make a permanent record of the Model and Serial numbers of your machine here. You'll save time and expense by including this reference identification on replacement parts

MODEL : _____

SER. NO.: _____

CURTIS-TOLEDO, INC.

1905 KIENLEN AVENUE, ST. LOUIS, MISSOURI 63133

Tel. (314) 383-1300

Fax (314) 381-1439

E-MAIL: INFO@CURTISTOLEDO.COM



DANGER

Air used for breathing or food processing must meet OSHA 29CFR 1910.134 or FDA 21CFR 178.3570 Regulations. Failure to do so may cause severe injury or death

INTRODUCTION

HOW TO USE THE PARTS LIST

Using the List of Illustrations obtain the figure number of the assembly in which your part is located. Go to the appropriate figure and locate your part on the illustration. Using the key number, find the part on the parts list.

LIST OF ILLUSTRATIONS

<u>Title</u>	<u>Page</u>
Major Components Group	2
Air And Oil Piping Group	6
Electrical Components Group (FVM)	10
Electrical Components Group (Y-Delta)	14
Enclosure Group	18
Routine Maintenance Kits	20



WARNING

Personal injury and/or equipment damage will result by failing to pay attention to the vital safety information and instruction in the operating and instruction manual. Carefully read, understand, and retain all safety information and instructions before operating this unit.

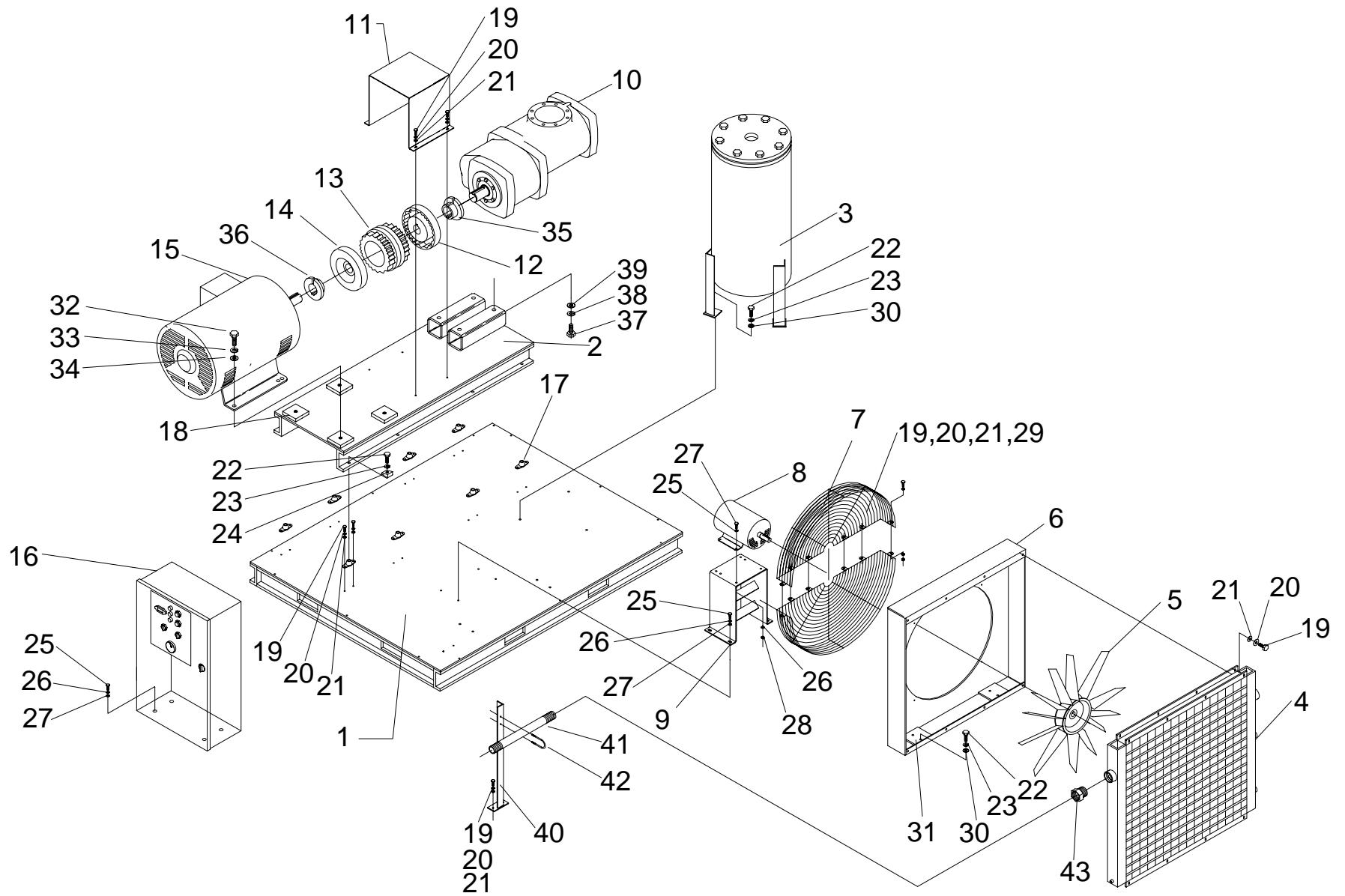


FIGURE 1: MAJOR COMPONENTS GROUP

PARTS LIST FOR MAJOR PARTS GROUP (REF. FIG. 1)

CAP-252

ITEM NO.	DESCRIPTION	QTY.	R/S 125D	R/S 150D
1	MAIN BASE ASSEMBLY	1	RN10108	<
2	SUB BASE ASSEMBLY	1	RN10108-7	<
3	SEPARATOR, OIL/AIR	1	RN10224-4	<
4	COOLER, AIR/OIL	1	RN32230	<
5	BLADE, FAN	1	RN32426	<
6	BOX, FAN	1	RN10474-3	<
7	GUARD, FAN, HALF	2	RN10460-9	<
*8	MOTOR 10HP, FAN, 3 PHASE, 60 Hz, 230/460V, ODP, 1140 RPM	1	RN19009	<
9	MOUNT, FAN MOTOR	1	RN10120-13	<
10	AIR END	SEE TABLE 1		
11	COUPLING GUARD	1	RN10340-2	<
12	COUPLING, AIR END	SEE TABLE 1		
13	SLEEVE	SEE TABLE 1		
14	COUPLING, MOTOR	SEE TABLE 1		
*15	MOTOR, MAIN, 3 PHASE, 60 Hz, 230/460V, ODP	1	RN19125-2	RN19150-2
16	CONTROL PANEL	SEE TABLE 2 & 3		
17	MOUNT, VIBRATION	8	RN60255	<
18	MOTOR MOUNTING BLOCK	4	RN10135-4	N/A
19	HHCS 5/16-18 x 3/4", GRADE 5	34	VH12HF	<
20	LOCKWASHER, 5/16"	34	VH35H	<
21	WASHER, FLAT, 5/16"	34	VH32H	<
22	HHCS 1/2-20 X 1-1/4", GRADE 5	15	VH12NK	<
23	LOCKWASHER-KANTLINK-LIGHT, 1/2"	15	VH35P	<
24	WASHER-SQUARED BEVELED, 1/2"	8	VH50N	<
25	HHCS 3/8-16UNC X 1", GRADE 5	12	VH12KH	<
26	LOCKWASHER, 3/8"	12	VH35K	<
27	WASHER, FLAT, 3/8"	12	VH32K	<
28	NUT, HEX - 3/8"	4	VH15K	<
29	NUT, HEX - 5/16"	6	VH15H	<
30	WASHER, FLAT, 1/2"	7	VH32P	<
31	PLATE, FAN BOX MNT	2	RN10474-5	<
32	HHCS 5/8-11 X 1 1/2", GRADE 5	4	VH12RM	<
33	LOCKWASHER, 5/8"	4	VH35R	<
34	WASHER, FLAT, 5/8"	4	VH32R	<
35	BUSHING, A/E COUPLING FLANGE	SEE TABLE 1		
36	BUSHING, MOTOR FLANGE	SEE TABLE 1		
37	HHCS M20x2.5 X 35mm	4	VH1449	<
38	WASHER, FLAT, 20mm	4	VH1445	<
39	LOCKWASHER, 20mm	4	VH1446	<
40	BRACKET	1	RN10149	<
41	NIPPLE, 2"NPT X 12"	1	VA13JSA	<
42	U-BOLT, 2" PIPE	1	VH2211	<
43	BUSHING, 2"NPT	1	VA12KJP	<
44	SEPARATOR, MOISTURE, 2 1/2" (NOT SHOWN)	1	RN34130	<

*FOR MOTOR PART NUMBERS OTHER THAN STANDARD ODP, CONSULT FACTORY

MODEL	PRESSURE	A/E FLANGE	BUSHING	SLEEVE	MOT/ODP FLANGE	BUSHING	AIR END		MOTOR
							MODEL	PART #	FRAME
125D	100	RN14518-7	RN14181-1	RN14514-1	RN14518-7	RN14181-2	E75G	CS647-9	405TS
S12	125	RN14518-7	RN14181-1	RN14514-1	RN14518-7	RN14181-2	E75G	CS647-1	405TS
	150	RN14518-7	RN14181-1	RN14514-1	RN14518-7	RN14181-2	E75G	CS647-5	405TS
	175	RN14518-7	RN14181-1	RN14514-1	RN14518-7	RN14181-2	E75	CS647-11	405TS
150D	100	RN14518-7	RN14181-1	RN14514-1	RN14518-7	RN14181-3	E75G	CS647-3	444TS
S12	125	RN14518-7	RN14181-1	RN14514-1	RN14518-7	RN14181-3	E75G	CS647-2	444TS
	150	RN14518-7	RN14181-1	RN14514-1	RN14518-7	RN14181-3	E75G	CS647-4	444TS
	175	RN14518-7	RN14181-1	RN14514-1	RN14518-7	RN14181-3	E75G	CS647-1	444TS

TABLE 1: A/E, A/E FLANGE, SLEEVE, MOTOR FLANGE, BUSHING & MOTOR FRAME

NOTES

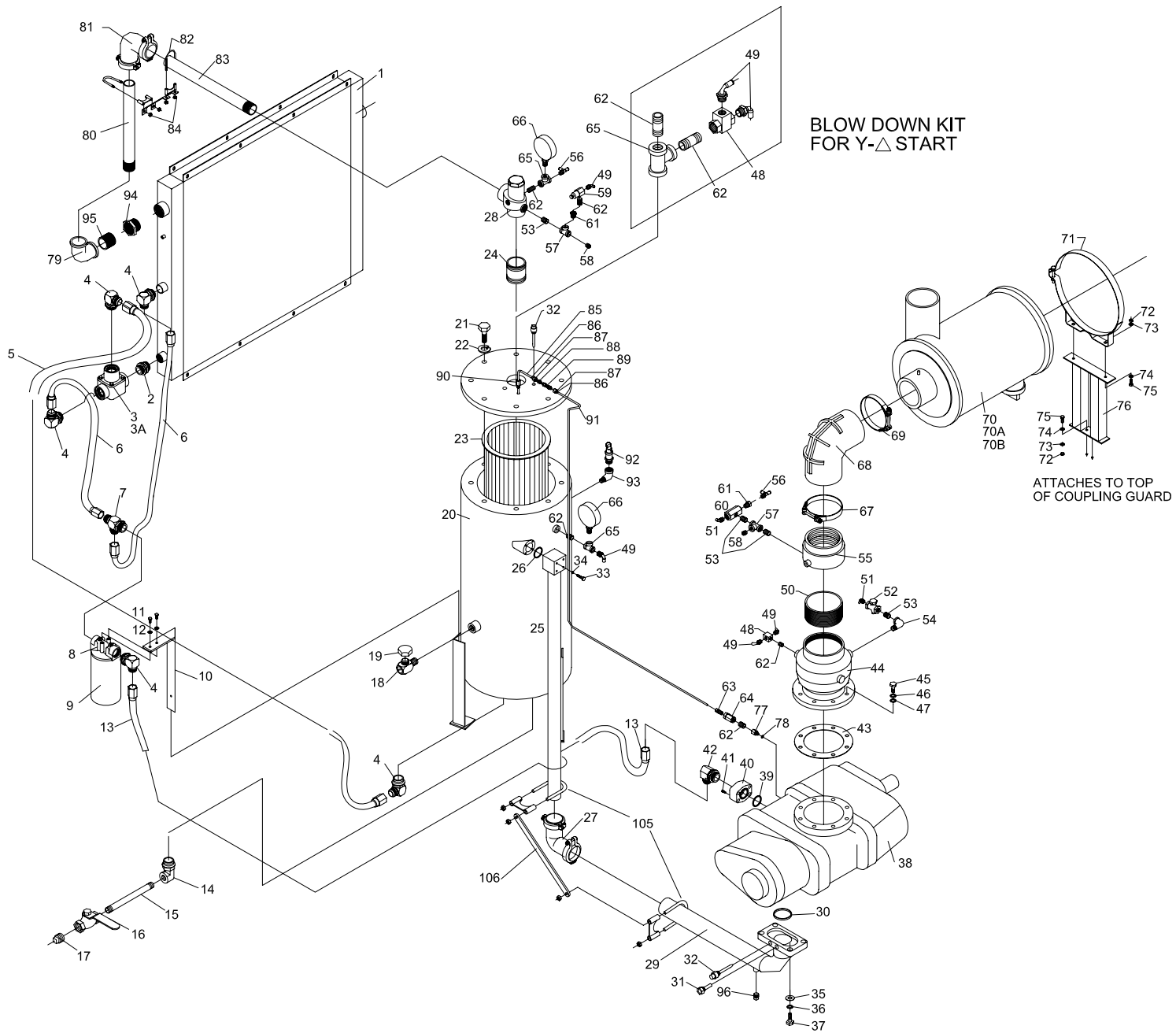


FIGURE 2: AIR AND OIL PIPING GROUP

PARTS LIST FOR AIR AND OIL PIPING GROUP (REF. FIG. 2)

CAP-252

ITEM NO.	DESCRIPTION	QTY.	R/S 125D	R/S 150D
1	COOLER, AIR/OIL	1	RN32230	<
2	UNION, STRAIGHT THREAD, SAE 20	1	VAB703	<
3	THERMO VALVE SAE 20, 170F	1	RN42425	<
3A	REPAIR KIT, THERMO VALVE	1	RN42425-1	<
4	CONNECTOR, ELBOW, 1 1/4" 37FL X SAE 20	5	VAB710	<
5	HOSE ASSEMBLY, #20 X 58"	1	RN60164	<
6	HOSE ASSEMBLY, #20 X 31"	2	RN60144	<
7	BRANCH TEE, STRAIGHT THREAD, SAE 20	1	VAB713	<
8	OIL FILTER HEAD	1	RN28108	<
9	OIL FILTER ELEMENT	1	RN28205	<
10	BRACKET, OIL FILTER	1	CS899	<
11	BOLT, HHCS 5/16-18 X 3/4"	2	VH12HF	<
12	LOCKWASHER, 5/16	2	VH35H	<
13	HOSE ASSEMBLY, #20 X 72"	1	RN60124	<
14	ADAPTOR, ELBOW, FEMALE 3/4"NPT X SAE 12	1	RN60078	<
15	NIPPLE, 3/4" X 12"	1	VA13ESA	<
16	VALVE, 3/4"	1	VV540	<
17	PIPE PLUG, 3/4"	1	VA01ER	<
18	OIL FILL & SIGHT GLASS	1	RN52171	<
19	OIL FILL CAP	1	CS741	<
20	SEPARATOR, AIR & OIL	1	RN10224-4	<
21	BOLT, 7/8-9 X 2 1/4"	8	VH12VQ	<
22	LOCKWASHER, 7/8"	8	VH35U	<
23	SEPARATOR ELEMENT	1	RN27527	<
24	NIPPLE, 2"NPT X 4"	1	VA24JGA	<
25	FLANGE-PIPE ASSEMBLY	1	RN10678-7	<
26	O-RING, #237	1	RN10688-1	<
27	COUPLING, FLEX, 3" ELBOW, LONG	1	RN60222-3	<
28	MIN. VALVE PRESS, 2"	1	RN42130	<
29	FLANGE ASSEMBLY, E75 DISCHARGE	1	RN10678-6	<
30	O-RING, #250	1	RN10678-4	<
31	THERMOWELL, 1/2"NPT	1	RN18681	<
32	TEMPERATURE SWITCH	2	RN18657	<
33	HHCS 5/8-11 X 6"	4	VH1465	<
34	LOCKWASHER, 5/8"	4	VH35R	<
35	WASHER, FLAT, M20	4	VH1445	<
36	LOCKWASHER, M20	4	VH1446	<
37	HHCS M20 X 2.5 X 50mm	4	VH1443	<
38	AIR END		SEE TABLE 1	
39	O-RING, #225	1	RN10672-1	<
40	ANCHOR FLANGE, SAE 24	1	RN10672-2	<
41	HHCS, M12 X 1.75 X 60mm	4	VH1442	<
42	CONNECTOR, ELBOW, 1 1/4" 37FL X SAE 24	1	VAB723	<
43	INLET GASKET	1	RN10685-2	<
44	INLET VALVE, 6"	1	RN24585	<

PARTS LIST FOR AIR AND OIL PIPING GROUP (REF. FIG. 2)

CAP-252

ITEM NO.	DESCRIPTION	QTY.	R/S 125D	R/S 150D
45	HEX HEAD BOLT, M16 X 2.0 X 45mm	8	VH1440	<
46	LOCKWASHER, M16	8	VH1234	<
47	WASHER FLAT, M16	8	VH1238	<
48	VALVE, SHUTTLE 1/4"	1	RN42105	<
49	1/4", QD, ELBOW	4	VAA703	<
50	NIPPLE, 6"NPT, CL.	1	VA13RAA	<
51	1/2", QD, ELBOW	2	VAB724	<
52	VALVE, CHECK 1/2"	1	VV824	<
53	NIPPLE, 1/2", CLOSE	4	VA13DAB	<
54	STREET ELBOW, 1/2"	1	VA08DP	<
55	COUPLING, 6"	1	RN24579-4	<
56	RUN TEE, 1/4"	2	VAB746	<
57	TEE, 1/2"	2	VA10DF	<
58	1/2", QD, STRAIGHT	2	VAB728	<
59	MODULATION VALVE, 1/4"	1	RN42613	<
60	BLOWDOWN VALVE, 1/2"	1	RN18425	<
61	BUSHING, 1/2" X 1/4"	2	VA12DBP	<
62	NIPPLE, 1/4", CLOSE	3	VA13BAA	<
63	CONNECTOR, 1/4", COMPRESSION W/ 9/64" ORIFICE	1	RN52137	<
64	VALVE, CHECK IN-LINE, 1/4"	1	VV834	<
65	TEE, 1/4"	2	VA10BF	<
66	PRESSURE GAGE	2	RN30323	<
67	T-BAR CLAMP, 8"ID	1	RN24084-6	<
68	ELBOW, 90 DEG, REDUCING 7" X 6" ID	1	RN24084-9	<
69	T-BAR CLAMP, 7"ID	1	RN24084-5	<
70	AIR FILTER, HEAVY DUTY	1	RN24084	<
70A	FILTER ELEMENT, PRIMARY	1	RN24084-1	<
70B	FILTER ELEMENT, SAFETY	1	RN24084-2	<
71	BAND MOUNTING	1	RN24084-3	<
72	NUT, 3/8"	2	VH15K	<
73	LOCKWASHER, 3/8"	4	VH35K	<
74	WASHER, FLAT 3/8"	4	VH32K	<
75	HHCS 3/8-16 X 1"	4	VH12KH	<
76	BRACKET, HDF	1	RN10150	<
77	ADAPTER, 1/8" BSPP MALE X 1/4" NPT FEMALE	1	VAA745	<
78	WASHER (BOND SEAL)	1	VAA746	<
79	ELBOW, 2"NPT	1	VA06JP	<
80	NIPPLE, 18-1/2" LONG	1	VAB896	<
81	COUPLING, 90 DEG	1	RN60221	<
82	U-BOLT, 2-1/4"	1	VH2211	<
83	NIPPLE, 21-1/4" LONG	1	VAD813	<
84	BRACE	2	CS897	<
85	TUBE, SCAVENGER LINE	1	OFE961	<
86	SLEEVE, 1/4"	2	VAA757	<
87	NUT, 1/4"	2	VAA756	<

PARTS LIST FOR AIR AND OIL PIPING GROUP (REF. FIG. 2)

CAP-252

ITEM NO.	DESCRIPTION	QTY.	R/S 125D	R/S 150D
88	UNION, 1/4"	1	VAA701	<
89	SIGHT GLASS	1	RN52170	<
90	CONNECTOR, COMPRESSION	1	RN52151	<
91	TUBE, SCAVENGER LINE	1	OFE998	<
92	VALVE, SAFETY, 1"			
	100 PSI, 125 PSI UNIT – 150 PSI VALVE	1	RN42825	<
	150 PSI UNIT – 175 PSI VALVE	1	RN42826	<
	175 PSI UNIT – 200 PSI VALVE	1	RN42827	<
93	STREET ELBOW, 1"	1	VA08FF	<
94	BUSHING, 2 1/2" X 2"NPT	1	VA12KJP	<
95	NIPPLE, 2"NPT, CLOSE	1	VA24JAA	<
96	PIPE PLUG, 1/2"NPT	1	VA01DR	<
103	TUBE, 1/4" NYLON #11 (NOT SHOWN)		VA1626	<
104	TUBE, 1/2" NYLON #11 (NOT SHOWN)		VA1632	<
105	U-BOLT, 3-1/2", 3/8"-16 FULL CR.	2	VH2212	<
106	STRAP, SUPPORT	1	RN10166	<
	<u>BLOWDOWN KIT FOR Y-D START</u>		<u>CY41M</u>	<
48	VALVE, SHUTTLE 1/4"	1	RN42105	<
49	1/4", QD, ELBOW	2	VAA703	<
62	NIPPLE, 1/4", CLOSE	2	VA13BAA	<
65	TEE, 1/4"	1	VA10BF	<

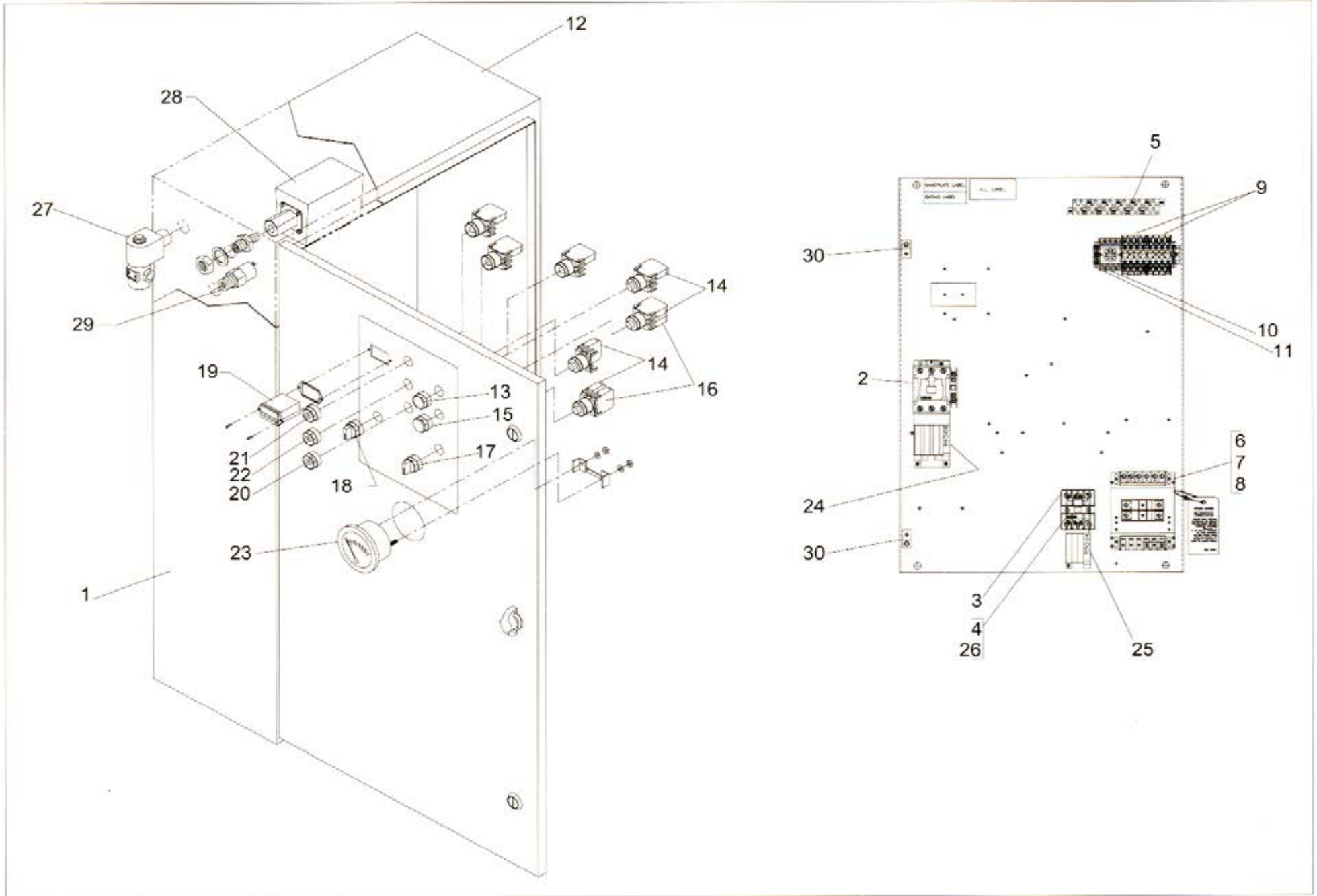


FIGURE 3: ELECTRICAL COMPONENTS GROUP - FVM

PARTS LIST FOR ELECTRICAL COMPONENTS GROUP – FVM (REF. FIG. 3)

ITEM NO.	DESCRIPTION	QTY.	R/S 125D	R/S 150D
1	CONTROL PANEL ASSEMBLY			
2	STARTER WITH INTERCHANGEABLE HEATERS (MAIN) SIZE "S" SIZE "N"		SEE TABLE 2	
3	STARTER SIZE "E" WITH INTERCHANGABLE HEATERS	1	RN18965	<
4	FUSE BLOCK - 30A, 600V	1	RN18314-1	<
5	TERMINAL BLOCK	26	RN18339	<
6	TRANSFOMER, FUSED -120V			
7	FUSE, TRANSFORMER, PRIMARY		SEE TABLE 2	
8	FUSE, TRANSFORMER, SECONDARY			
9	RELAY, 4 POLE, 120V, DPDT	2	1330062	<
*10	SOCKET (<i>OPTIONAL</i>)	1	1330049	<
*11	TIMER, 60 MIN., PLUG-IN (<i>OPTIONAL</i>)	1	1330026	<
12	ENCLOSURE, 37.5 X 21.5 X 10	1	RN18059	<
13	PUSH BUTTON START SWITCH	1	RN18116	<
14	N.O. CONTACT BLOCK	4	RN18118-2	<
15	PUSH BUTTON STOP SWITCH (RED)	1	RN18118	<
16	N.C. CONTACT BLOCK	2	RN18118-1	<
*17	2 POSITION SELECTOR SWITCH (CONST/AUTO) (<i>OPTIONAL</i>)	1	RN18104-9	<
18	2 POSITION SELECTOR SWITCH (LOAD/UNLOAD)	1	RN18104-7	<
19	HOURMETER	1	1330048	<
*20	AMBER LIGHT (STAND BY) (<i>OPTIONAL</i>)	1	RN18218	<
21	RED LIGHT (STOP)	1	RN18217	<
22	GREEN LIGHT (POWER ON)	1	RN18219	<
23	TEMPERATURE GAUGE	1	RN18683	<
24	HEATER - MAIN			
25	HEATER - FAN		SEE TABLE 2	
26	FUSE, FAN			
27	VALVE, SOLENOID	1	RN18422	<
28	SWITCH, PRESSURE – 100 PSI UNITS	1	RN18133-2	<
	SWITCH, PRESSURE – 125 PSI UNITS	1	RN18133-2	<
	SWITCH, PRESSURE – 150 PSI UNITS	1	RN18133-4	<
	SWITCH, PRESSURE – 175 PSI UNITS	1	RN18133-4	<
29	ANTI-START PRESSURE SWITCH	1	RN18134	<
30	LUG, GROUNDING	2	VE779	<
	WIRING DIAGRAM FOR FVM		610005	<

* PARTS FOR OPTIONAL TIME DUAL CONTROL

	ITEM NO	DESCRIPTION	QTY	200 VOLT	230 VOLT	460 VOLT	575 VOLT
R/S 125D	1	CONTROL PANEL ASSEMBLY	1			1330061	1330060
	2	SIZE "S" STARTER	1			RN18860	N/A
		SIZE "N" STARTER	1			N/A	RN18963
	6	TRANSFOMER, 250VA,FUSED, 120V	1			1330054	1330054
	7	FUSE, TRANSFORMER, PRIMARY	2	N/A	N/A	VE334	VE334
	8	FUSE, TRANSFORMER, SECONDARY	1			RN18393	RN18393
	24	HEATER - MAIN	1			RN18972	RN18990
	25	HEATER - FAN	1			RN18978	RN18977
	26	FUSE, FAN	3			RN18318-1	RN18318
R/S 150D	1	CONTROL PANEL ASSEMBLY	1			1330061	1330061
	2	SIZE "S" STARTER	1			RN18860	RN18860
	6	TRANSFOMER, 250VA,FUSED, 120V	1			1330054	1330054
	7	FUSE, TRANSFORMER, PRIMARY	2	N/A	N/A	VE334	VE334
	8	FUSE, TRANSFORMER, SECONDARY	1			RN18393	RN18393
	24	HEATER - MAIN	1			RN18973	RN18972
	25	HEATER - FAN	1			RN18978	RN18977
		26	FUSE, FAN	3			RN18318-1

Table 2: CONTROL PANEL, STARTERS, HEATERS AND FUSES - FVM

NOTES

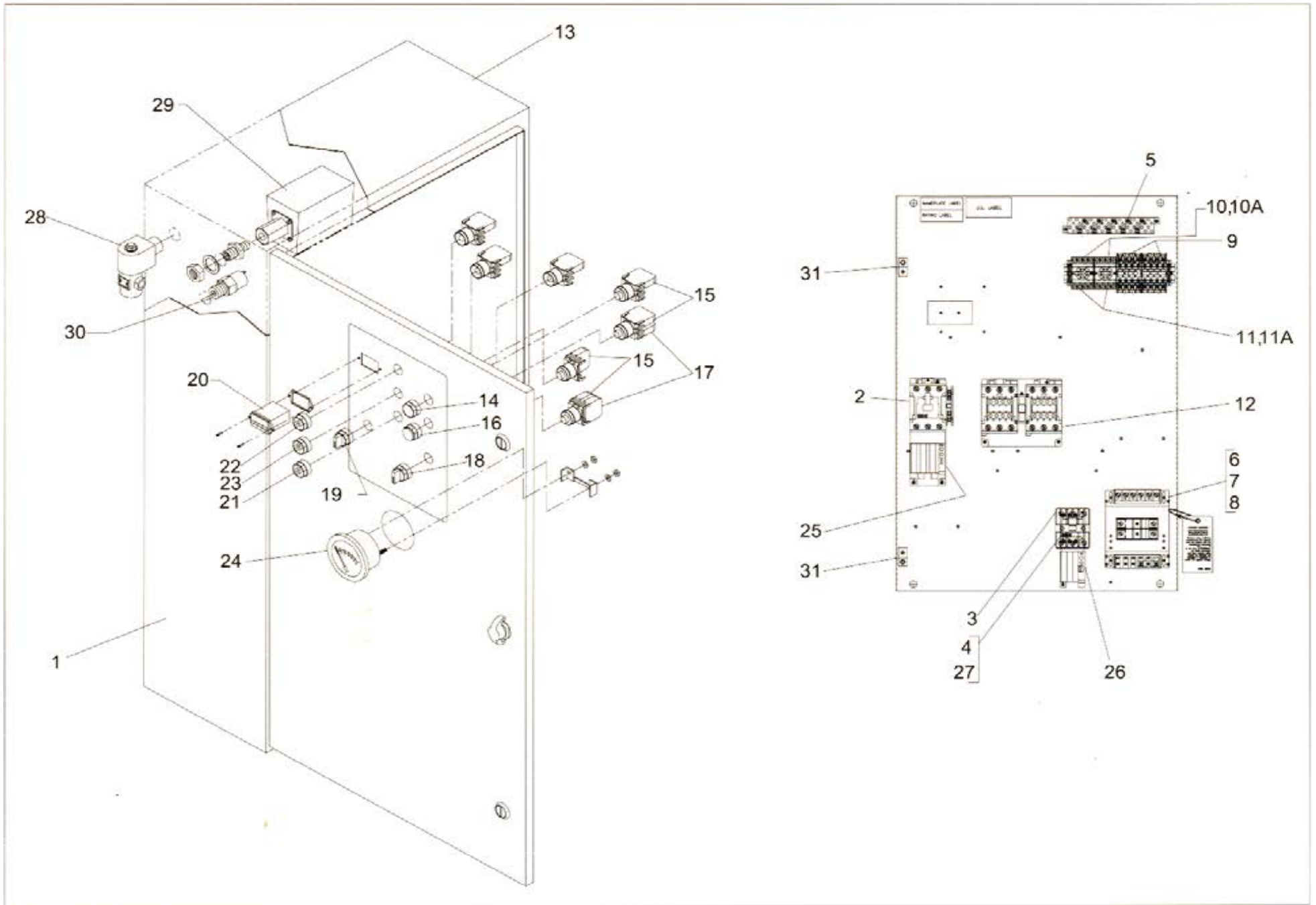


FIGURE 4: ELECTRICAL COMPONENTS GROUP – Y-DELTA

PARTS LIST FOR ELECTRICAL COMPONENTS GROUP – Y-DELTA (REF. FIG. 4)

ITEM NO.	DESCRIPTION	QTY.	R/S 125D	R/S 150D
1	CONTROL PANEL ASSEMBLY			
2	STARTER WITH INTERCHANGEABLE HEATERS (MAIN) SIZE "P" SIZE "N"		SEE TABLE 3	
3	STARTER SIZE "E" WITH INTERCHANGABLE HEATERS	1	RN18965	<
4	FUSE BLOCK - 30A, 600V	1	RN18314-1	<
5	TERMINAL BLOCK	26	RN18339	<
6	TRANSFOMER, FUSED -120V			
7	FUSE, TRANSFORMER, PRIMARY		SEE TABLE 3	
8	FUSE, TRANSFORMER, SECONDARY			
9	RELAY, 4 POLE, 120V, DPDT	2	1330062	<
10	SOCKET	1	1330049	<
*10A	SOCKET (<i>OPTIONAL</i>)	1	1330049	<
11	TIMER, 30 SEC., PLUG-IN	1	1330031	<
*11A	TIMER, 60 MIN., PLUG-IN (<i>OPTIONAL</i>)	1	1330026	<
12	CONTACTOR REV. M1-S/M1-S WITH NO/NC		SEE TABLE 3	
13	ENCLOSURE, 37.5 X 21.5 X 10	1	RN18059	<
14	PUSH BUTTON START SWITCH	1	RN18116	<
15	N.O. CONTACT BLOCK	4	RN18118-2	<
16	PUSH BUTTON STOP SWITCH (RED)	1	RN18118	<
17	N.C. CONTACT BLOCK	2	RN18118-1	<
*18	2 POSITION SELECTOR SWITCH (CONST/AUTO) (<i>OPTIONAL</i>)	1	RN18104-9	<
19	2 POSITION SELECTOR SWITCH (LOAD/UNLOAD)	1	RN18104-7	<
20	HOURMETER	1	1330048	<
*21	AMBER LIGHT (STAND BY) (<i>OPTIONAL</i>)	1	RN18218	<
22	RED LIGHT (STOP)	1	RN18217	<
23	GREEN LIGHT (POWER ON)	1	RN18219	<
24	TEMPERATURE GAUGE	1	RN18683	<
25	HEATER - MAIN			
26	HEATER - FAN		SEE TABLE 3	
27	FUSE, FAN			
28	VALVE, SOLENOID	1	RN18422	<
29	SWITCH, PRESSURE – 100 PSI UNITS	1	RN18133-2	<
	SWITCH, PRESSURE – 125 PSI UNITS	1	RN18133-2	<
	SWITCH, PRESSURE – 150 PSI UNITS	1	RN18133-4	<
	SWITCH, PRESSURE – 175 PSI UNITS	1	RN18133-4	<
30	ANTI-START PRESSURE SWITCH	1	RN18134	<
31	LUG, GROUNDING	2	VE779	<
	WIRING DIAGRAM FOR Y-DELTA		CAB1665B1	<

* PARTS FOR OPTIONAL TIME DUAL CONTROL

	ITEM NO	DESCRIPTION	QTY	200 VOLT	230 VOLT	460 VOLT	575 VOLT
R/S 125D	1	CONTROL PANEL ASSEMBLY	1	N/A	N/A	1330069	1330069
		SIZE "N" STARTER	1			RN18960	RN18960
	12	CONTACTOR "N" REV. M1-S/M1-S W/ NO/NC	1			RN18540	RN18540
	6	TRANSFOMER, 250VA,FUSED, 120V	1			1330054	1330054
	7	FUSE, TRANSFORMER, PRIMARY	2			VE334	VE334
	8	FUSE, TRANSFORMER, SECONDARY	1			RN18393	RN18393
	24	HEATER - MAIN	1			RN18989	RN18988
	25	HEATER - FAN	1			RN18978	RN18977
	26	FUSE, FAN	3	RN18318-1	RN18318		
R/S 150D	1	CONTROL PANEL ASSEMBLY	1	N/A	N/A	1330069	1330069
	2	SIZE "N" STARTER	1			RN18960	RN18960
	12	CONTACTOR "N" REV. M1-S/M1-S W/ NO/NC	1			RN18540	RN18540
	6	TRANSFOMER, 250VA,FUSED, 120V	1			1330054	1330054
	7	FUSE, TRANSFORMER, PRIMARY	2			VE334	VE334
	8	FUSE, TRANSFORMER, SECONDARY	1			RN18393	RN18393
	24	HEATER - MAIN	1			RN18989	RN18988
	25	HEATER - FAN	1			RN18978	RN18977
	26	FUSE, FAN	3	RN18318-1	RN18318		

Table 3: CONTROL PANEL, STARTERS, HEATERS AND FUSES – Y-DELTA

NOTES

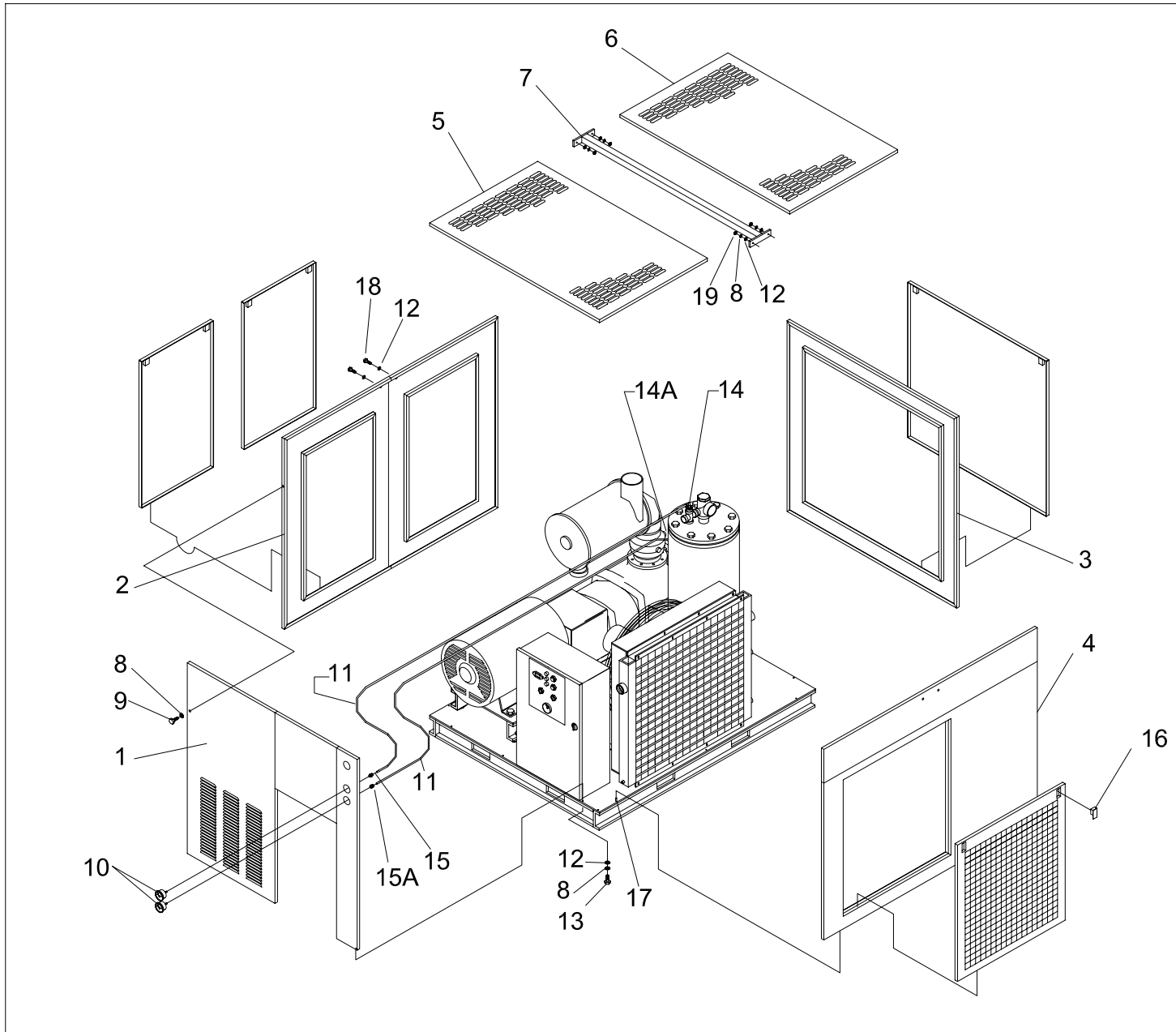


FIGURE 5: ENCLOSURE GROUP

PARTS LIST FOR ENCLOSURE GROUP (REF. FIG. 5)

CAP-252

ITEM NO.	DESCRIPTION	QTY.	R/S 125D	R/S 150D
1	FRONT PANEL ASSEMBLY	1	RN10062-1	<
2	LEFT SIDE PANEL ASSEMBLY	1	RN10062-4	<
3	REAR PANEL ASSEMBLY	1	RN10062-2	<
4	RIGHT SIDE PANEL ASSEMBLY	1	RN10062-3	<
5	TOP PANEL (FRONT) ASSEMBLY	1	RN10062-5	<
6	TOP PANEL (BACK) ASSEMBLY	1	RN10062-5	<
7	TOP CROSS SUPPORT, 64" X 2"	1	RN10062-6	<
8	LOCKWASHER – 5/16"	23	VH35H	<
9	SCREW, SOCKET HEAD CAP, BUTTON HEAD, 5/16-18 x 1-1/2" LG.	12	VH12HM	<
10	GAUGE, AIR PRESSURE, 2 1/2" DIA.	2	RN30322	<
11	TUBE, 1/4" NYLON, BLACK, #11	-	VA1626	<
12	WASHER, FLAT – 5/16"	15	VH32H	<
13	SCREW, HEX HEAD CAP, 5/16-18 x 1" LG.	7	VH12HH	<
14	CONNECTOR, ELBOW, QD, 1/4" NPT x 1/4" OD TUBE	1	VAA703	<
14A	CONNECTOR, ELBOW, COMPRES, 1/4" NPT x 1/4" OD TUBE	1	RN52150-2	<
15	CONNECTOR, STRAIGHT, QD, 1/4" NPTF x 1/4" OD TUBE	1	VAA730	<
15A	CONNECTOR, STRAIGHT, COMPRES, 1/4" NPTF x 1/4" OD TUBE	1	RN52150-7	<
16	LATCH	8	CS914	<
17	PIN	6	RN10050-9	<
18	SCREW, HEX HEAD CAP, 5/16-18 x 1" LG.	4	VH12HH	<
19	NUT, 5/16-18	4	VH15H	<
*20	FOAM, ACOUSTICAL, 1"	-	RN60415	<
*21	SOUND REDUCTION KIT (<i>OPTIONAL</i>)	1	CY48-9-41	<
*22	VENT COVER FRONT PANEL, FOAM ASSEMBLY (<i>OPTIONAL</i>)	1	RN10062-A1A	<
*23	VENT COVER COOLER SIDE, FOAM ASSEMBLY (<i>OPTIONAL</i>)	1	RN10062-AA	<
*24	VENT COVER TOP PANEL (REAR), FOAM ASSEMBLY (<i>OPTIONAL</i>)	1	RN10062-A2A	<
*25	HEX HEAD CAP SCREW, 1/4-20 X 3/4" (<i>OPTIONAL</i>)	37	VH12FF	<
*26	WASHER, FLAT, 1/4" (<i>OPTIONAL</i>)	37	VH32F	<
*27	LOCKWASHER, 1/4" (<i>OPTIONAL</i>)	37	VH35F1	<

* PARTS NOT SHOWN ON DRAWING

ROUTINE MAINTENANCE KITS

4,000-HOUR KIT

MODEL	WORKING PRESSURE			
	100 PSI	125 PSI	150 PSI	175 PSI
R/S 125D	VGC545	<	<	<
R/S 150D	VGC545	<	<	<

KIT INCLUDES:

- (1) SEPARATOR ELEMENT
- (4) OIL FILTER ELEMENT
- (2) HD MAIN ELEMENT
- (2) HD SAFETY ELEMENT

8,000-HOUR KIT

MODEL	WORKING PRESSURE			
	100 PSI	125 PSI	150 PSI	175 PSI
R/S 125D	VGC591	<	<	<
R/S 150D	VGC591	<	<	<

KIT INCLUDES:

- (2) SEPARATOR ELEMENT
- (8) OIL FILTER ELEMENT
- (4) HD MAIN ELEMENT
- (4) HD SAFETY ELEMENT

12,000-HOUR KIT

MODEL	WORKING PRESSURE			
	100 PSI	125 PSI	150 PSI	175 PSI
R/S 125D	VGJ503	<	<	<
R/S 150D	VGJ503	<	<	<

KIT INCLUDES:

- (3) SEPARATOR ELEMENT
- (12) OIL FILTER ELEMENT
- (6) HD MAIN ELEMENT
- (6) HD SAFETY ELEMENT
- (1) INLET VALVE KIT
- (1) THERMO BY-PASS VALVE KIT
- (1) MINIMUM PRESSURE VALVE KIT
- (1) COUPLING SLEEVE

NOTES

NOTES

CURTIS – TOLEDO, INC.

1905 KIENLEN AVE., ST. LOUIS, MO 63133
TEL. (314) 383-1300 FAX (314) 381-1439
E-MAIL: CURTISCOMP@AOL.COM