

CURTIS

R/S 100D/07

DIRECT DRIVE

AIR COOLED

380V – 50HZ

LOT NUMBER:

R/S 100D LOT#18

HOW TO ORDER PARTS

Give name and part number as shown in parts list and serial number. Serial number is on nameplate attached to control panel of unit.

IMPORTANT

Make a permanent record of the Model and Serial numbers of your machine here. You'll save time and expense by including this reference identification on replacement parts

MODEL : _____

SER. NO.: _____

PARTS LIST

CURTIS-TOLEDO, INC.

1905 KIENLEN AVENUE, ST. LOUIS, MISSOURI 63133

Tel. (314) 383-1300

Fax (314) 381-1439

E-MAIL: INFO@CURTISTOLEDO.COM



DANGER

Air used for breathing or food processing must meet OSHA 29CFR 1910.134 or FDA 21CFR 178.3570 Regulations. Failure to do so may cause severe injury or death

INTRODUCTION

HOW TO USE THE PARTS LIST

Using the List of Illustrations obtain the figure number of the assembly in which your part is located. Go to the appropriate figure and locate your part on the illustration. Using the key number, find the part on the parts list.

LIST OF ILLUSTRATIONS

<u>Title</u>	<u>Page</u>
Major Components Group	2
Air and Oil Piping Group	4
Electrical Components Group	8
Enclosure Group	10
Routine Maintenance Kits	12



WARNING

Personal injury and/or equipment damage will result by failing to pay attention to the vital safety information and instruction in the operating and instruction manual

Carefully read, understand, and retain all safety information and instructions before operating this unit.

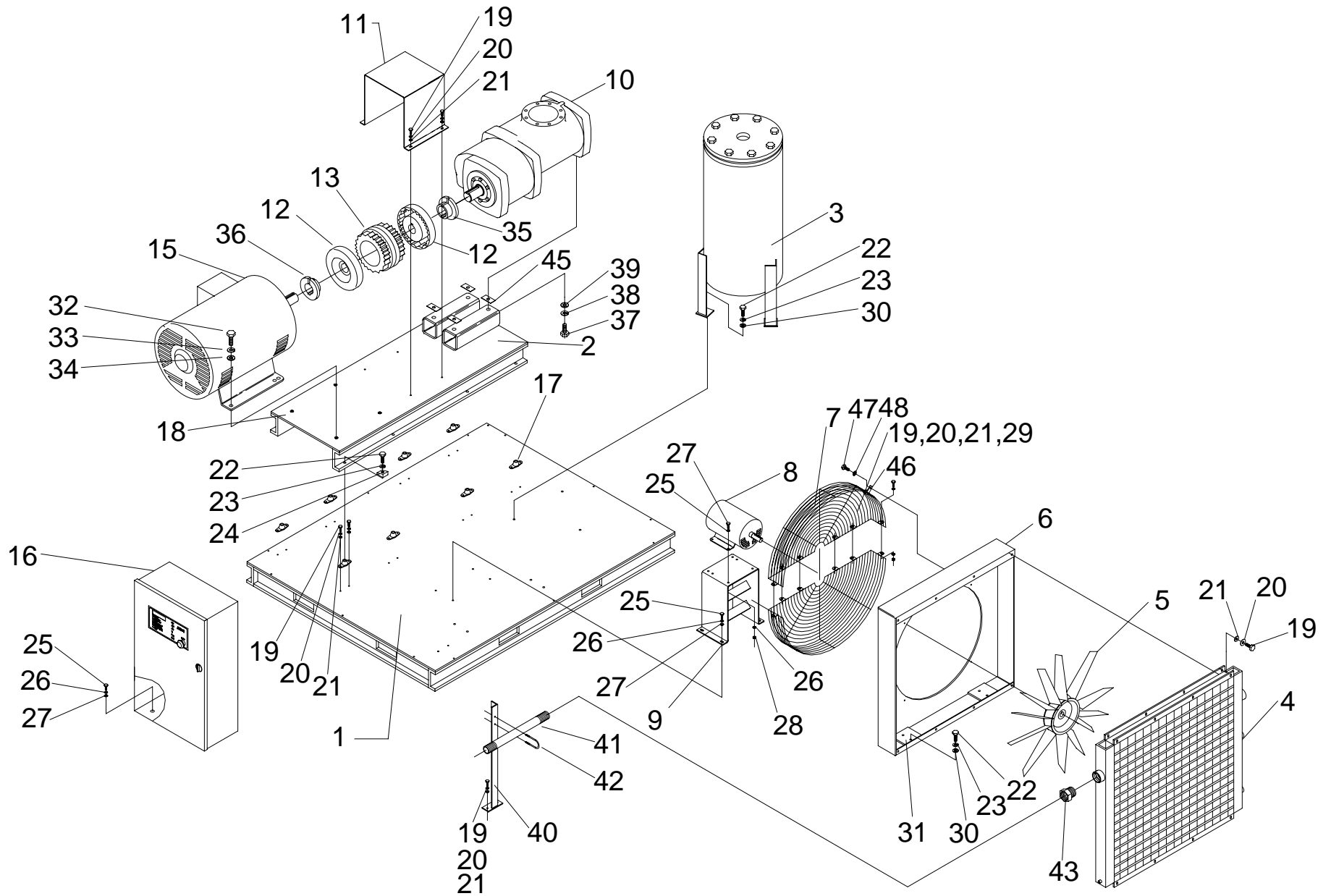


FIGURE 1: MAJOR PARTS GROUP

PARTS LIST FOR MAJOR PARTS GROUP (REF. FIG. 1)

CAP-253

ITEM NO.	DESCRIPTION	QTY.	R/S 100D
1	MAIN BASE ASSEMBLY	1	RN10108
2	SUB BASE ASSEMBLY	1	RN10108-7
3	SEPARATOR, OIL/AIR	1	RN10224-4
4	COOLER, AIR/OIL	1	RN32230
5	BLADE, FAN	1	RN32428
6	BOX, FAN	1	RN10474-3
7	GUARD, FAN, HALF	2	RN10460-9
*8	MOTOR 5HP, FAN, 3 PHASE, 50 Hz, 380V, TEFC, 1500 RPM	1	VM947
9	MOUNT, FAN MOTOR	1	RN10120-15
10	AIR END	1	CS647-15
11	COUPLING GUARD	1	RN10340-2
12	COUPLING FLANGE	2	RN14517-17
13	SLEEVE	1	RN14512-1
15	MOTOR, MAIN, 100HP, 3 PHASE, 50 Hz, 380V, TEFC	1	RN19109-1
16	CONTROL PANEL	1	1331017
17	MOUNT, VIBRATION	8	RN60255
19	HHCS 5/16-18 x 3/4", GRADE 5	34	VH12HF
20	LOCKWASHER, 5/16"	34	VH35H
21	WASHER, FLAT, 5/16"	34	VH32H
22	HHCS 1/2-20 X 1-1/4", GRADE 5	15	VH12NK
23	LOCKWASHER-KANTLINK-LIGHT, 1/2"	15	VH35P
24	WASHER-SQUARED BEVELED, 1/2"	8	VH50N
25	HHCS 3/8-16UNC X 1", GRADE 5	12	VH12KH
26	LOCKWASHER, 3/8"	12	VH35K
27	WASHER, FLAT, 3/8"	12	VH32K
28	NUT, HEX - 3/8"	4	VH15K
29	NUT, HEX - 5/16"	6	VH15H
30	WASHER, FLAT, 1/2"	7	VH32P
31	PLATE, FAN BOX MNT	2	RN10474-5
32	HHCS 5/8-11 X 1 1/2", GRADE 5	4	VH12RM
33	LOCKWASHER, 5/8"	4	VH35R
34	WASHER, FLAT, 5/8"	4	VH32R
35	BUSHING, A/E COUPLING FLANGE	1	RN14580-2
36	BUSHING, MOTOR FLANGE	1	RN14179
37	HHCS M20x2.5 X 35mm	4	VH1449
38	WASHER, FLAT, 20mm	4	VH1445
39	LOCKWASHER, 20mm	4	VH1446
40	BRACKET	1	RN10149
41	NIPPLE, 2"NPT X 12"	1	VA13JSA
42	U-BOLT, 2" PIPE	1	VH2211
43	BUSHING, 2"NPT	1	VA12KJP
45	AIR END SPACER	4	RN10138-2
46	FANGUARD CLIPS	8	RN1455-3
47	HHSC 1/4-20X3/4	8	VH12FF1
48	LOCKWASHER 1/4"	8	VH351

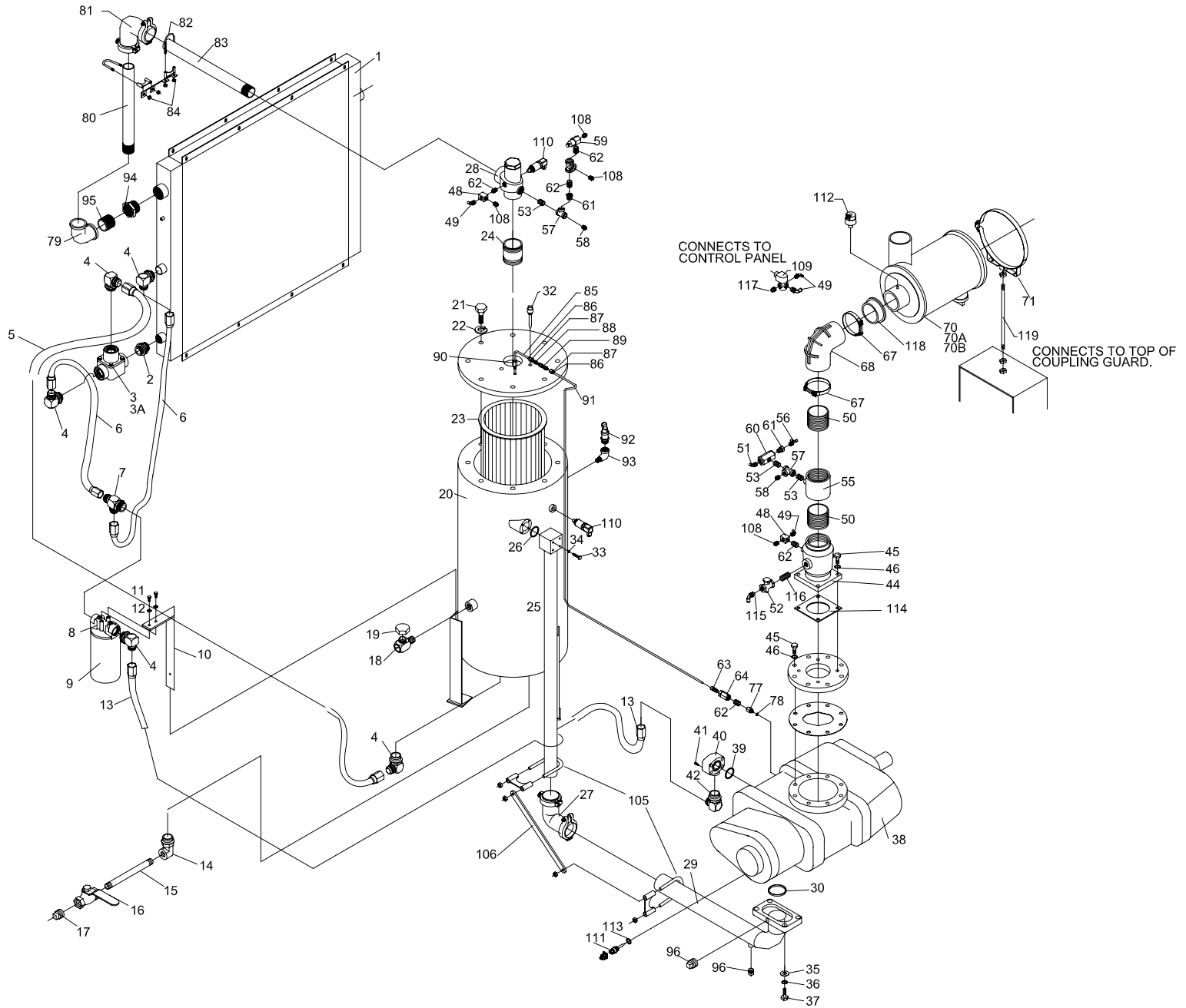


FIGURE 2: AIR AND OIL PARTS GROUP

PARTS LIST FOR AIR AND OIL PIPING GROUP (REF. FIG. 2)

CAP-253

ITEM NO.	DESCRIPTION	QTY.	R/S 100D
1	COOLER, AIR/OIL	1	RN32230
2	UNION, STRAIGHT THREAD, SAE 20	1	VAB703
3	THERMO VALVE SAE 20, 170F	1	RN42425
3A	REPAIR KIT, THERMO VALVE	1	RN42425-1
4	CONNECTOR, ELBOW, 1 1/4" 37FL X SAE 20	5	VAB710
5	HOSE ASSEMBLY, #20 X 58"	1	RN60164
6	HOSE ASSEMBLY, #20 X 31"	2	RN60144
7	BRANCH TEE, STRAIGHT THREAD, SAE 20	1	VAB713
8	OIL FILTER HEAD	1	RN28108
9	OIL FILTER ELEMENT	1	RN28205
10	BRACKET, OIL FILTER	1	CS899
11	BOLT, HHCS 5/16-18 X 3/4"	2	VH12HF
12	LOCKWASHER, 5/16	2	VH35H
13	HOSE ASSEMBLY, #20 X 72"	1	RN60124
14	ADAPTOR, ELBOW, FEMALE 3/4"NPT X SAE 12	1	RN60078
15	NIPPLE, 3/4" X 12"	1	VA13ESA
16	VALVE, 3/4"	1	VV540
17	PIPE PLUG, 3/4"	1	VA01ER
18	OIL FILL & SIGHT GLASS	1	RN52171
19	OIL FILL CAP	1	CS741
20	SEPARATOR, AIR & OIL	1	RN10224-4
21	BOLT, 7/8-9 X 2 1/4"	8	VH12VQ
22	LOCKWASHER, 7/8"	8	VH35U
23	SEPARATOR ELEMENT	1	RN27527
24	NIPPLE, 2"NPT X 4"	1	VA24JGA
25	FLANGE-PIPE ASSEMBLY	1	RN10678-7
26	O-RING, #237	1	RN10688-1
27	COUPLING, FLEX, 3" ELBOW, LONG	1	RN60222-3
28	MIN. VALVE PRESS, 2"	1	RN42130
29	FLANGE ASSEMBLY, E75 DISCHARGE	1	RN10678-6
30	O-RING, #250	1	RN10678-4
32	TEMPERATURE SWITCH	1	RN18657
33	HHCS 5/8-11 X 6"	4	VH1465
34	LOCKWASHER, 5/8"	4	VH35R
35	WASHER, FLAT, M20	4	VH1445
36	LOCKWASHER, M20	4	VH1446
37	HHCS M20 X 2.5 X 50mm	4	VH1443
38	AIR END	1	CS647-15
39	O-RING, #225	1	RN10672-1
40	ANCHOR FLANGE, SAE 24	1	CS908
41	HHCS, M12 X 1.75 X 60mm	4	VH1442

PARTS LIST FOR AIR AND OIL PIPING GROUP (REF. FIG. 2)

CAP-253

ITEM NO.	DESCRIPTION	QTY.	R/S 100D
42	CONNECTOR, ELBOW, 1 1/4" 37FL X SAE 24	1	VAB723
43	INLET GASKET	1	RN10685-1
44	INLET VALVE, 4"	1	RN24577
45	HEX HEAD BOLT, M16 X 2.0 X 45mm	12	VH1440
46	LOCKWASHER, M16	12	VH1234
48	VALVE, SHUTTLE 1/4"	2	RN42105
49	1/4" NPT X 1/4", QD, ELBOW	4	VAA703
50	NIPPLE, 4"NPT, CL.	2	VA13NAA
51	1/2"NPT X 3/8", QD, ELBOW	1	VAA753
52	VALVE, CHECK 3/8" NPT	1	VV832
53	NIPPLE, 1/2", CLOSE	3	VA13DAB
55	COUPLING, 4"	1	RN24577-2
56	RUN TEE, 1/4"	1	VAB746
57	TEE, 1/2"	2	VA10DF
58	1/2"NPT X 3/8", QD, STRAIGHT	2	VAA785
59	MODULATION VALVE, 1/4"	1	RN42613
60	BLOWDOWN VALVE, 1/2"	1	RN18425
61	BUSHING, 1/2" X 1/4"	2	VA12DBP
62	NIPPLE, 1/4", CLOSE	4	VA13BAA
63	CONNECTOR, 1/4", COMPRESSION W/ 9/64" ORIFICE	1	RN52137
64	VALVE, CHECK IN-LINE, 1/4"	1	VV834
67	T-BAR CLAMP	2	RN24079-8
68	ELBOW, 90 DEG	1	RN24079-7
70	AIR FILTER, HEAVY DUTY	1	RN24079
70A	FILTER ELEMENT, PRIMARY	1	RN24079-1
70B	FILTER ELEMENT, SAFETY	1	RN24079-2
71	BAND MOUNTING	1	RN24079-3
77	ADAPTER, 1/8" BSPP MALE X 1/4" NPT FEMALE	1	VAA745
78	WASHER (BOND SEAL)	1	VAA746
79	ELBOW, 2"NPT	1	VA06JP
80	NIPPLE, 18-1/2" LONG	1	VAB896
81	COUPLING, 90 DEG	1	RN60221
82	U-BOLT, 2-1/4"	1	VH2211
83	NIPPLE, 21-1/4" LONG	1	VAD813
84	BRACE	2	CS897
85	TUBE, SCAVENGER LINE	1	OFE961
86	SLEEVE, 1/4"	2	VAA757
87	NUT, 1/4"	2	VAA756

PARTS LIST FOR AIR AND OIL PIPING GROUP (REF. FIG. 2)

CAP-253

ITEM NO.	DESCRIPTION	QTY.	R/S 100D
88	UNION, 1/4"	1	VAA701
89	SIGHT GLASS	1	RN52170
90	CONNECTOR, COMPRESSION	1	RN52151
91	TUBE, SCAVENGER LINE	1	OFE998
92	VALVE, SAFETY, 1", 150 PSI VALVE	1	RN42825
93	STREET ELBOW, 1"	1	VA08FF
94	BUSHING, 2 1/2" X 2"NPT	1	VA12KJP
95	NIPPLE, 2"NPT, CLOSE	1	VA24JAA
96	PIPE PLUG, 1/2"NPT	1	VA01DR
103	TUBE, 1/4" NYLON #11 (NOT SHOWN)		VA1626
104	TUBE, 3/8" NYLON #11 (NOT SHOWN)		VA1628
105	U-BOLT, 3-1/2", 3/8"-16 FULL CR.	2	VH2212
106	STRAP, SUPPORT	1	RN10166
107	ADAPTOR FLANGE	1	RN10685
108	1/4"NPT X 1/4"OD, QD STRAIGHT	4	VAA702
109	SOLENOID VALVE	1	RN18422
110	PRESSURE SENSOR	2	1240016
111	TEMPERATURE SENSOR	1	1240017
112	AIR FILTER EL. INDICATOR	1	1240018
113	COPPER SEAL	1	RN18679-2
114	GASKET, INLET VALVE	1	RN24577-1
115	3/8"NPT X 3/8"OD, QD ELBOW	1	VAA751
116	3/8"NPT CLOSE NIPPLE	1	VA13CAB
117	ORIFCIE EXHAUST	1	RN52160
118	REDUCER INSERT	1	RN24079-6
119	MOUNTING HARDWARE	1	RN24079-9

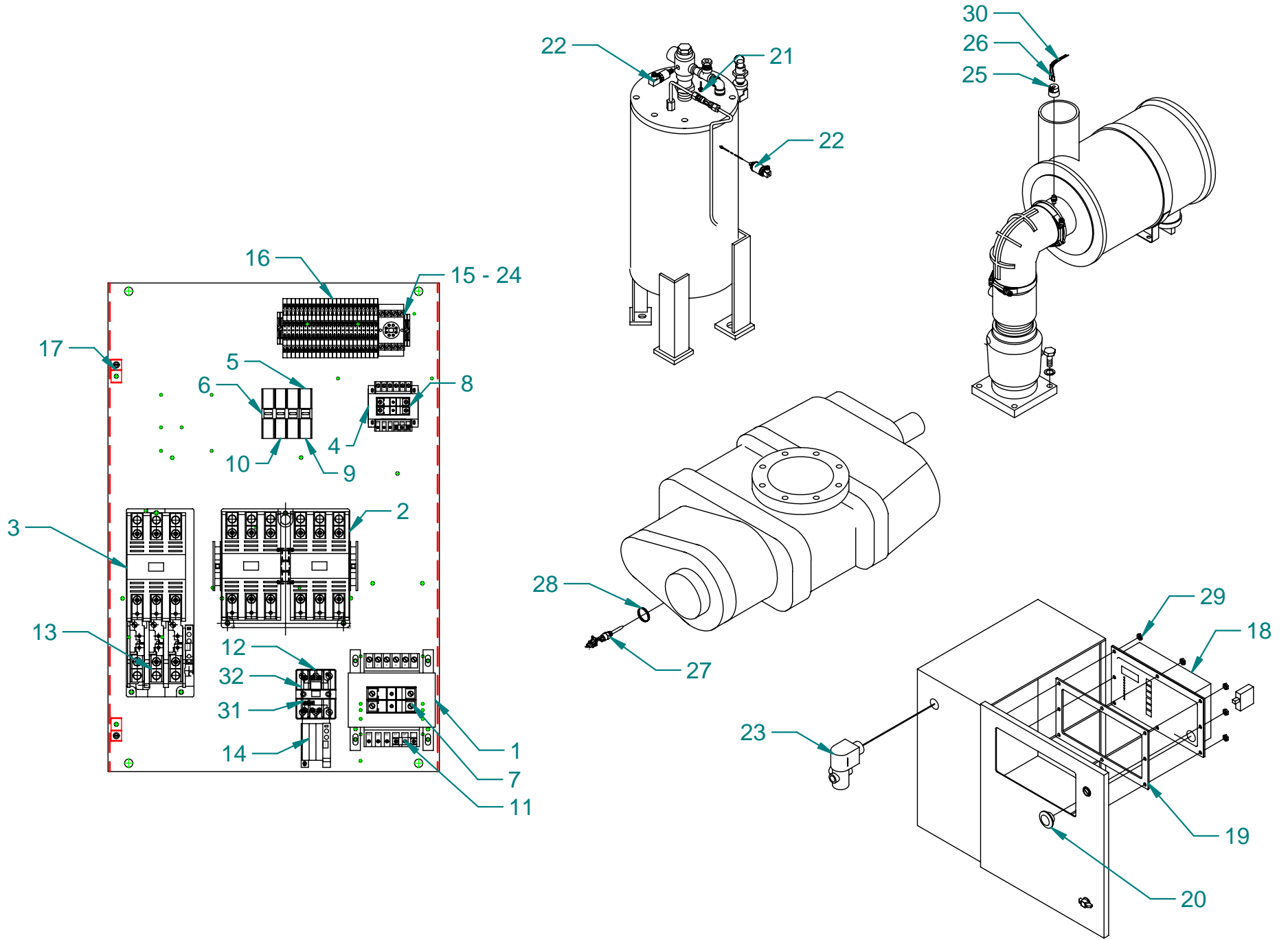


FIGURE 3: ELECTRICAL COMPONENTS GROUP

PARTS LIST FOR ELECTRICAL COMPONENTS (FIG. 3)

CAP-253

ITEM NO.	DESCRIPTION	QTY.	R/S 100D
1	TRANSFORMER 350VA 230/400/460/575V – 120V	1	1330057
2	CONTACTOR WYE - DELTA	1	RN18540
3	STARTER, MAIN MOTOR SIZE N	1	RN18963
4	TRANSFORMER 50 VA 120/230 – 24V	1	1330149
5	FUSE BLOCK, 1 POLE 30A	1	RN18310
6	FUSE BLOCK, 3 POLE 30A	1	VE395
7	FUSE, PRIMARY TRANSFORMER 1, 3A	2	RN18348-1
8	FUSE, SECONDARY TRANSFORMER 2, 1.6 A	2	VE380
9	FUSE, PRIMARY TRANSFORMER 2, 0.5 A	1	RN18341
10	FUSE, PHASE RELAY, 2A	3	VE394
11	FUSE, SECONDARY TRANSFORMER 1, 4A	1	RN18355
12	STARTER, FAN MOTOR SIZE E	1	RN18965
13	HEATER PACK, MAIN MOTOR	1	RN18983
14	HEATER PACK, FAN MOTOR	1	RN18976
15	PHASE RELAY	1	VS631
16	TERMINAL BLOCK	1	RN18397
17	GROUNDING LUG	2	VE779
18	AIRMASTER M6 CONTROLER	1	1380001
19	GASKET FOR M6	1	1230001
20	E-STOP BUTTON WITH N.C. CONTACT	1	1240006
21	TEMPERATURE SWITCH	2	RN18657
22	PRESSURE SENSOR	2	1240016
23	SOLENOID VALVE	1	RN18422
24	8 PIN SOCKET 600V	1	VS618
25	AIR FILTER EL. INDICATOR	1	1240018
26	QUICK DISCONNECT TERMINAL	2	VE792
27	TEMPERATURE SENSOR	1	1240017
28	COPPER SEAL	1	RN18679-2
29	NUT-HEX, 10-32	8	VH15C
30	BUNDLING WRAP	2'	1030002
31	FUSE FAN STARTER 15A	3	RN18317-2
32	FUSE BLOCK ASSY.	1	RN18314-1

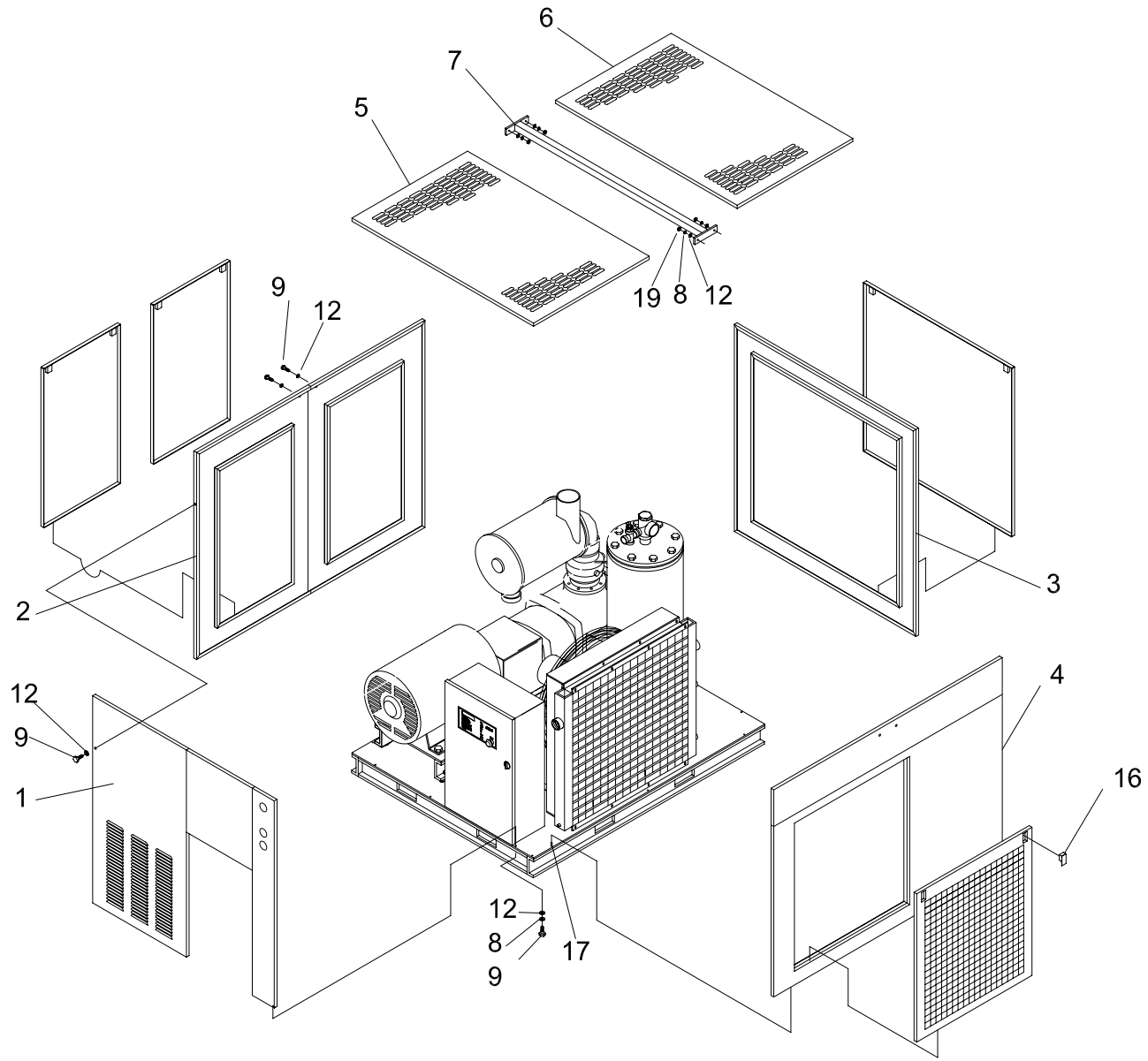


FIGURE 4: ENCLOSURE GROUP

PARTS LIST FOR ENCLOSURE GROUP (REF. FIG. 4)

CAP-253

ITEM NO.	DESCRIPTION	QTY.	R/S 100D
1	FRONT PANEL ASSEMBLY	1	RN10062-1
2	LEFT SIDE PANEL ASSEMBLY	1	RN10062-4
3	REAR PANEL ASSEMBLY	1	RN10062-2
4	RIGHT SIDE PANEL ASSEMBLY	1	RN10062-3
5	TOP PANEL (FRONT) ASSEMBLY	1	RN10062-5
6	TOP PANEL (BACK) ASSEMBLY	1	RN10062-5
7	TOP CROSS SUPPORT, 64" X 2"	1	RN10062-6
8	LOCKWASHER – 5/16"	12	VH35H
9	HHCS, 5/16-18 x 1 3/4" LG.	24	VH12HN
12	WASHER, FLAT – 5/16"	28	VH32H
16	LATCH	8	CS914
17	PIN	7	RN10050-9
19	NUT, 5/16-18	4	VH15H

ROUTINE MAINTENANCE KITS

KIT INCLUDES	R/S 100D/07 380V-50HZ		
	4,000 HOUR	8,000 HOUR	12,000 HOUR
KIT PART NUMBER	VGL500	VGL501	VGL503
SEPARATOR ELEMENT	(1)	(2)	(3)
OIL FILTER ELEMENT	(4)	(8)	(12)
HD AIR FILTER MAIN ELEMENT	(2)	(4)	(6)
HD AIR FILTER SAFETY ELEMENT	(2)	(4)	(6)
INLET VALVE KIT	-	-	(1)
THERMO BY-PASS VALVE KIT	-	-	(1)
MINIMUM PRESSURE VALVE KIT	-	-	(1)
COUPLING SLEEVE	-	-	(1)

NOTES

CURTIS – TOLEDO, INC.

1905 KIENLEN AVE., ST. LOUIS, MO 63133
TEL. (314) 383-1300 FAX (314) 381-1439
E-MAIL: INFO@CURTISTOLEDO.COM
WEBSITE: WWW.CURTISTOLEDO.COM