

CURTIS

R/S 75D-100D

DIRECT DRIVE
WATER COOLED

LOT NUMBER:

R/S 100 02
R/S 75 01

HOW TO ORDER PARTS

Give name and part number as shown in parts list and serial number. Serial number is on nameplate attached to control panel of unit.

IMPORTANT

Make a permanent record of the Model and Serial numbers of your machine here. You'll save time and expense by including this reference identification on replacement parts.

MODEL : _____

SER. NO.: _____

PARTS LIST

CURTIS-TOLEDO, INC.

1905 KIENLEN AVENUE, ST. LOUIS, MISSOURI 63133

Tel. (314) 383-1300

Fax (314) 381-1439

E-MAIL: INFO@CURTISTOLEDO.COM



DANGER

Air used for breathing or food processing must meet OSHA 29CFR 1910.134 or FDA 21CFR 178.3570 Regulations. Failure to do so may cause severe injury or death

INTRODUCTION

HOW TO USE THE PARTS LIST

Using the List of Illustrations obtain the figure number of the assembly in which your part is located. Go to the appropriate figure and locate your part on the illustration. Using the key number, find the part on the parts list.

LIST OF ILLUSTRATIONS

<u>Title</u>	<u>Page</u>
Major Components Group	2
Water And Oil Piping Group	6
Electrical Components Group (FVM)	10
Electrical Components Group (Y-Delta)	14
Electrical Components Group (M6)	18
Routine Maintenance Kits	20



WARNING

Personal injury and/or equipment damage will result by failing to pay attention to the vital safety information and instruction in the operating and instruction manual

Carefully read, understand, and retain all safety information and instructions before operating this unit.

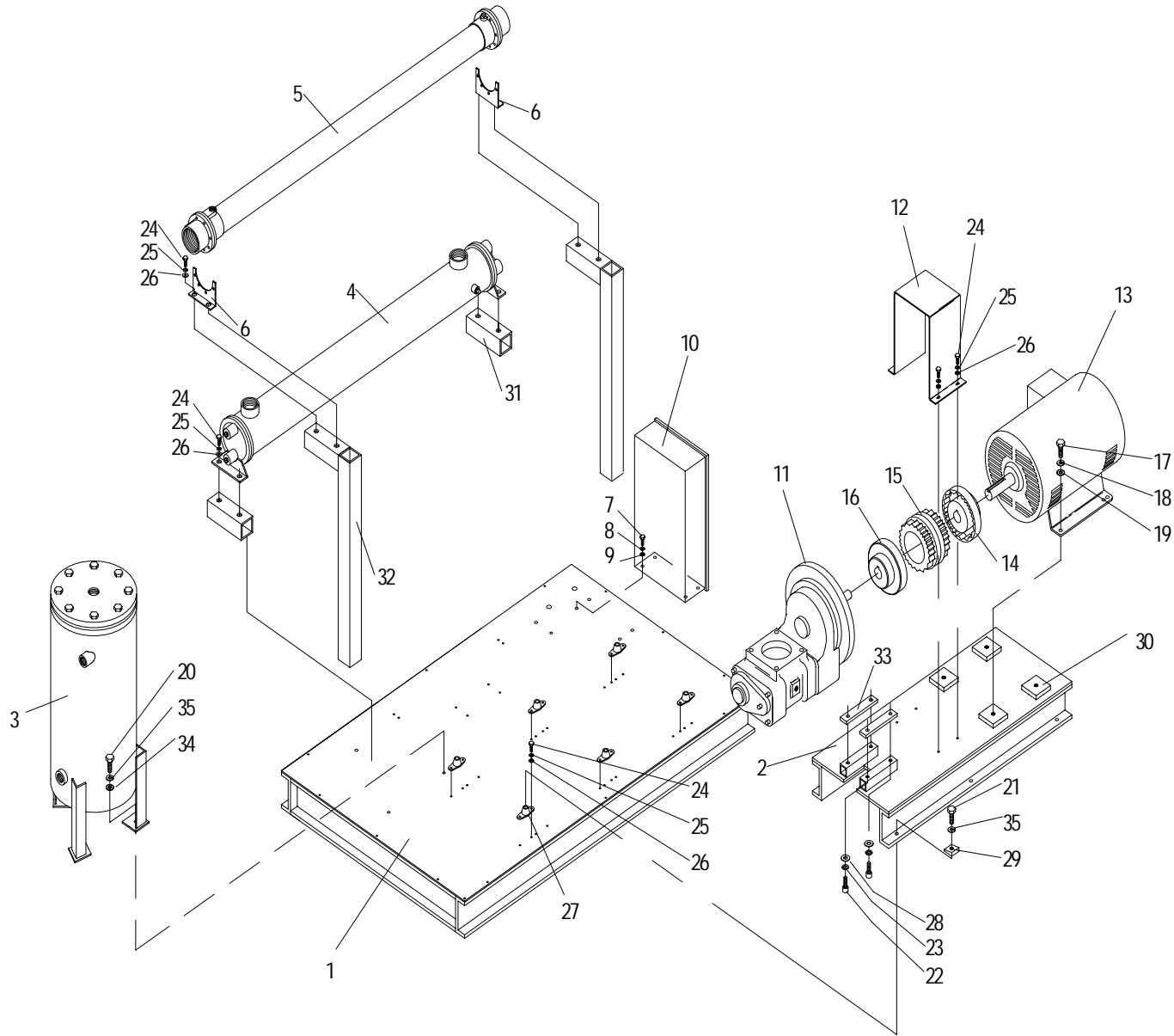


Figure 1: Major Components Group

PARTS LIST FOR MAJOR PARTS GROUP (REF. FIG. 1)

ITEM NO.	DESCRIPTION	QTY.	R/S 75	R/S 100 (100,125 PSI)
1	MAIN BASE ASSEMBLY	1	RN10106	<
2	SUB BASE, MOTOR	1	RN10108-5	RN10108-6
3	SEPARATOR, OIL/AIR	1	RN10223-1	<
4	COOLER OIL	1	RN32259	RN32260
5	AFTERCOOLER, AIR	1	RN33143	RN33139
6	MTG BRACKETS, AFTER COOLER	2	1360016	RN33162
7	BOLT, 3/8-16 X 3/4"	4	VH12KF	<
8	WASHER LOCK, 3/8	4	VH35K	<
9	WASHER, 3/8	4	VH32K	<
10	PANEL, CONTROL	1	1331008	SEE TABLE 2 & 3
11	AIR END	1	CS646-13	CS742-1
12	COUPLING GUARD	1	RN10340-1	RN10340-3
*13	MOTOR, MAIN, 3 PHASE, 60 Hz	1	RN19078	RN19101-6
14	COUPLING MOTOR FLANGE	1	RN14517-13	RN14517-11
15	SLEEVE	1	RN14512-1	RN14512-1
16	COUPLING, AIR END FLANGE	1	RN14517-15	RN14517-16
17	HHCS 5/8-11UNC X 1-3/4", GRADE 5	4	VH12RN	<
18	LOCKWASHER, 5/8"	4	VH35R	<
19	WASHER, FLAT, 5/8"	4	VH32R	<
20	HHCS 1/2-20 UNF X 3/4"	3	VH12NF	<
21	HHCS 1/2-20UNF X 1-1/2", GRADE 5	6	VH12NM	<
22	BOLT, M16 X 2.0	4	VH1440	VH1440
23	LOCKWASHER, 16mm	4	VH1240	VH1234
24	SCREW, HEX HEAD CAP, 5/16-18 x 3/4" LG.	24	VH12HF	<
25	LOCKWASHER, 5/16"	24	VH35H	<
26	WASHER, FLAT, 5/16"	24	VH32H	<
27	MOUNTS-VIBRATION	6	RN60255	<
28	WASHER, FLAT, 16mm	4	VH1239	VH1238
29	WASHER-SQUARED BEVELED, 1/2"	6	VH50N	<
30	MOTOR MOUNTING BLOCKS	4	RN10135	RN10135
31	SPACER, OIL COOLER	2	RN10163	<
32	BRACKET, AFTERCOOLER	2	RN10162	<
33	SPACER, A/E	2	-	-
34	WASHER, FLAT, 1/2"	3	VH32P	<
35	LOCKWASHER, 1/2"	9	VH35P	<

* FOR MOTOR PART NUMBERS OTHER THAN 230/460V ODP, CONSULT FACTORY

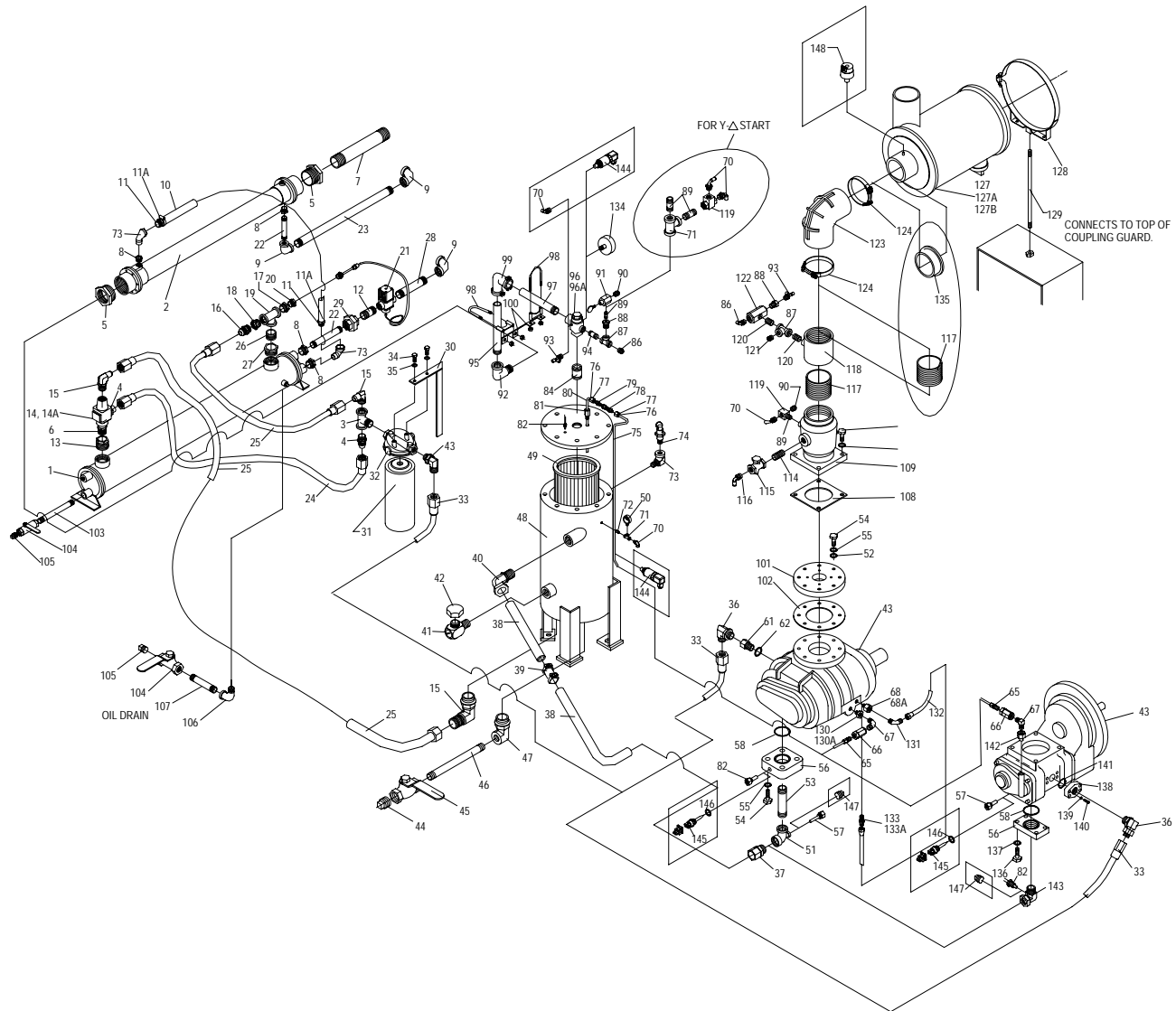


Figure 2: Air And Oil Piping Group

PARTS LIST FOR AIR AND OIL PIPING GROUP (REF. FIG. 2)

ITEM NO.	DESCRIPTION	QTY.	R/S 75	R/S100 100,125 PSI
1	OIL COOLER	1	RN32259	RN32260
2	AFTERCOOLER, AIR	1	RN33143	RN33139
3	TEE, SAE 16	1	VAB726	<
4	CONNECTOR, 1-5/16-12UN 37 FL X SAE 16, VITON	2	VAB725	<
5	BUSHING-BLACK, 3" X 2"	2	NA	VA12LJP
5A	BUSHING-BLACK, 2 1/2" X 2"	2	VA12KJP	NA
6	ADAPTER, 1"NPT X SAE 16	1	VAD817	<
7	NIPPLE, 2"NPT X 21"	1	VAD822	<
8	BUSHING, 1 1/2" X 3/4"	4 2	VA12HEQ	<
8A	BUSHING, 1" X 3/4"	2	VA12FEB	NA
9	ELBOW, 90 DEG, 3/4"NPT	3	VA06EB	<
10	HOSE, MULTIPURPOSE, 3/4" ID	8'	RN60001	<
11	NIPPLE, 3/4"OD X 3/4" NPT MALE	2	RN60002	<
11A	HOSE CLAMP, WORM DRIVE	2	RN60003	<
12	NIPPLE, 3/4"NPT, CL.	3	NA	VA13EAB
13	BUSHING BLACK 2" X 1"	1	VA12JFF	<
14	THERMAL VALVE, SAE 16	1	RN42417	<
14A	THERMAL VALVE SERVICE KIT, 170F	1	RN42417-1	<
15	CONNECTOR, ELBOW 1-5/16-12UN 37 FL X SAE 16, VITON	4	VAB708	<
16	CONNECTOR, 1-5/16-12UN 37FL X 1" NPT	1	RN60162	<
17	BUSHING 1 1/4" NPT X 3/4" NPT	1	VA12GEF	<
18	BUSHING, HEX, 1-1/4" X 1"	1	VA12GFF	<
19	TEE, 1 1/4"NPT	1	VA10GF	<
20	PROBE WELL, 3/4"NPT X 4 1/2"	1	CF1559	<
21	VALVE MODULATING WATER, 3/4" NPT	1	CF1554	<
22	NIPPLE 3/4"NPT X 4 1/2" LG	2	VA13EHB	<
23	NIPPLE 3/4"NPT X 22" LG	1	NA	VAD826
23A	NIPPLE 3/4" NPT X 25"	1	VAD832	NA
24	HOSE ASSEMBLY, 7/8"ID X 67" LG	1	RN60122	RN60123
25	HOSE ASSEMBLY, 7/8"ID X 35" LG	2	RN60169-1	<
26	NIPPLE, 1-1/4" X 2 1/2"	1	VA017	<
27	BUSHING, HEX, 2" X 1-1/4"	1	VA12JGF	<
28	NIPPLE 3/4"NPT X 8" LG	1	NA	VA13ENB
28A	NIPPLE 3/4" NPT X 16"	1	VAD833	NA
29	UNION, 3/4"NPT, BRASS	1	VAC883	<
30	BRACKET, OIL FILTER	1	CS899	<
31	OIL FILTER ELEMENT	1	RN28204	RN28205
32	OIL FILTER HEAD	1	RN28107	<
33	HOSE ASSEMBLY, 7/8"ID X 57" LG	1	RN60193	<
34	SCREW, 5/16-18 X 3/4" HHCS, GRADE 5	2	VH12HF	<
35	LOCKWASHER, 5/16"	2	VH35H	<
36	CONNECTOR, ELBOW, 1-5/16"-12UN 37FL X 3/4"BSPP	1	NA	VAA793
36A	CONNECTOR, ELBOW 1-5/16-12UN 37 FL X SAE 16, VITON	1	VAB708	NA

PARTS LIST FOR AIR AND OIL PIPING GROUP (REF. FIG. 2)

ITEM NO.	DESCRIPTION	QTY.	R/S 75	R/S100 100,125 PSI
37	MALE CONNECTOR, 2" OD X 2" NPT	1	VAB743	<
38	TUBE STEEL, 2" OD	1	OFE1000	<
39	COUPLING, 2" FLEX	1	RN60226	<
40	MALE ELBOW, 2" OD TUBE X 2" NPT (SAE)	1	VAB780	<
41	OIL FILL & SIGHT GLASS	1	RN52171	<
42	CAP, OIL FILLER / SIGHT GLASS	1	CS741	<
43	AIR END	1	CS646-13	<
44	PIPE PLUG, 3/4" NPT	1	VA01ER	<
45	VALVE, BALL, 3/4" NPT	1	VV540	<
46	NIPPLE, 3/4" NPT X 12" LG	1	VA13ESA	<
47	STREET ELBOW FEMALE, 1-1/16-12 UN X 3/4" NPT	1	RN60078	<
48	AIR/OIL SEPARATOR	1	RN10223-2	<
49	SEPARATOR ELEMENT	1	RN27526	<
50	PRESSURE GAGE	2	RN30323	<
51	REDUCING TEE, 2" X 1/2" X 2"	1	NA	VAD814
52	WASHER, FLAT, 16mm	12	NA	VH1238
53	NIPPLE, 2"NPT X 6"LG	1	NA	VA13JLA
54	BOLT, M16 X 2.0 X 45mm	12	NA	VH1440
55	LOCKWASHER, 16mm	12	NA	VH1234
56	FLANGE, 2" NPT	1	RN10676-4	RN10675-2
57	THERMOWELL	1	RN18681	<
58	O-RING	1	RN10676-5	RN10675-3
59	SCREW, 5/8-11 X 1 3/4" HHCS, GRADE 5	4	VH1440	VH12RN
60	LOCKWASHER, 5/8"	4	VH1234	VH35R
61	EXTENDED BUSHING, 3/4"BSPP	1	NA	VAA792
62	BONDED SEAL	1	NA	VAA789
65	ORIFICE SCAVENGER, COMPRESSION CONNECTOR	1	RN52136-1	RN52137
66	CHECK VALVE, INLINE, 1/4"NPT	1	VV834	<
67	ELBOW MALE, 1/4"NPT X 1/4"NPT, STEEL	1	VAA754	<
68	ADAPTER	1	NA	VAA790
68A	SEAL	1	NA	CS857-2
70	CONNECTOR, 1/4" NPT X 1/4" OD, QUICK DISCONNECT	1	VAA703	<
71	TEE, 1/4" NPT	1	VA10BF	<
72	NIPPLE, 1/4" NPT	1	VA13BBB	<
73	ELBOW-STREET, 3/4" NPT	3	VA08EF	<
74	SAFETY VALVE, 3/4" 200 PSI	1	RN42822	<
75	STEEL TUBE, SCAVENGER LINE	1	OFE953	OFE986
76	SLEEVE, 1/4" OD STEEL	2	VAA757	<
77	NUT, 1/4" OD. STEEL	2	VAA756	<
78	GLASS SIGHT	1	RN52170	<
79	UNION, 1/4"OD X 1/4"OD, STEEL	1	VAA701	<
80	STEEL TUBE, SCAVENGER LINE	1	OFE961	<
81	SCAVENGER COMPRESSION CONNECTOR	1	RN52151	<
82	TEMPERATURE SWITCH, 1/2"NPT	1	RN18657	<

PARTS LIST FOR AIR AND OIL PIPING GROUP (REF. FIG. 2)

ITEM NO.	DESCRIPTION	QTY.	R/S 75	R/S100 100,125 PSI
84	NIPPLE	1	VA24JEA	<
86	CONNECTOR, ELBOW, 1/2"NPT X 3/8"OD, QUICK DISCONNECT	1	VA753	<
87	TEE, 1/2" NPT	2	VA10DF	<
88	BUSHING, 1/2"NPT X 1/4" NPT	2	VA12DBQ	<
89	NIPPLE, CLOSE, 1/4" NPT	2	VA13BAA	<
90	CONNECTOR, STR., 1/4" NPT X 1/4" OD, QUICK DISCONNECT	2	VAA702	<
91	MODULATING VALVE, 1/4" NPT	1	RN42613	<
92	STREET ELBOW, 2"NPT	1	VA08JP	<
93	RUN TEE, 1/4" NPT X 1/4" OD X 1/4" OD	2	VAB746	<
94	NIPPLE, SHORT, 1/2"	1	VA13DBB	<
95	NIPPLE, 2" X 14 1/2" LG, ONE THREAD END	1	VAD807	<
96	VALVE, MINIMUM PRESSURE	1	RN42130	<
96A	SERVICE KIT, MINIMUM PRESSURE VALVE	1	RN42130-1	<
97	NIPPLE, 2" X 11" LG, ONE THREAD END	1	VA13JRA	<
98	U-BOLT, FULL CIRCLE	2	VH2211	<
99	COUPLING, 90 DEG ELBOW	1	RN60221	<
100	BRACE	2	CS897	<
101	ADAPTER FLANGE	1	NA	RN10685
102	GASKET	1	NA	RN10685-1
103	NIPPLE, 3/8"NPT X 4"	1	VA13CGB	<
104	BALL VALVE, 3/8"	2	VV539	<
105	PLUG, 3/8"	2	VA01CA	<
106	STREET ELBOW, 3/8"NPT	1	VA08CG	<
107	NIPPLE, 3/8"NPT X 2"	1	VA13CCB	<
108	GASKET, INLET VALVE	1	RN24577-1	<
109	VALVE, INLET, 4"	1	RN24577	<
114	NIPPLE, CLOSE, 3/8" NPT	1	VA13CAB	<
115	CHECK VALVE, INLINE, 3/8" NPT	1	VV832	<
116	CONNECTOR, ELBOW, 3/8" NPT X 3/8"OD, QUICK DISCONNECT	1	VAA751	<
117	NIPPLE, 4" NPT	1	VA13NAA	<
118	COUPLING, 4" & 1/2"	1	RN24577-2	<
119	VALVE, SHUTTLE 1/4"	2	RN42105	<
120	NIPPLE, 1/2" NPT	2	VA13DAB	<
121	CONNECTOR, STR, 1/2" NPT X 3/8" OD, QUICK DISCONNECT	1	VAA785	<
122	VALVE, BLOWDOWN, 1/2"	1	RN18425	<
123	ELBOW, 90 DEG	1	RN24079-4	<
124	T-BAR CLAMP	2	RN24079-8	RN24079-5
127	HEAVY DUTY FILTER	1	RN24079	RN24082
127A	HEAVY DUTY FILTER MAIN ELEMENT	1	RN24079-1	RN24082-1
127B	HEAVY DUTY FILTER SAFETY ELEMENT	1	RN24079-2	RN24082-2
128	MOUNTING BAND	1	RN24079-3	RN24082-3
129	MOUNTING HARDWARE	1	RN24079-9	<
130	ADAPTER 3/4"BSPP X 1/4"BSPP	1	NA	RN60167
130A	SEAL WASHER, 3/4"	1	NA	CS857-1

PARTS LIST FOR AIR AND OIL PIPING GROUP (REF. FIG. 2)

ITEM NO.	DESCRIPTION	QTY.	R/S 75	R/S100 100,125 PSI
131	ADAPTER 1/4"BSPP X 37 DEG. FL, ELBOW	1	NA	RN60166-3
132	HOSE ASSEMBLY, 3/16"ID	1	NA	RN60166
133	ADAPTER 1/8"BSPP X 37 DEG. FL	1	NA	RN60166-1
133A	SEAL WASHER, 1/8"	1	NA	CS857-3
134	PRESSURE GAUGE	1	NA	RN30322
135	REDUCED INSERT	1	RN24079-6	NA
136	BOLT, M16 X 2.0 X 45mm	4	VH1440	NA
137	LOCKWASHER, 16mm	4	RN24577-1	NA
138	FLANGE, 1" OD, OIL INJ. E25	1	RN10677-2	NA
139	LOCKWASHER, M10 FOR SOCKED SCREWS	4	VH1242	NA
140	SHCS M10 X 1.5 X 35	4	VH1453	NA
141	O-RING	1	RN10677-1	NA
142	ADAPTOR 1/8"BSPP X 1/4"NPTF	1	CS854	NA
143	ELBOW MALE 2" OD X 2" NPT	1	RN52184	NA
144	PRESSURE SENSOR	2	1240016	<
145	TEMPERATURE SENSOR	1	1240017	<
146	COPPER SEAL	1	RN18679-2	<
147	1/2" NPT PIPE PLUG	1	VA01DR	<
148	ELECTRONIC AIR FILTER INDICATOR	1	1240018	<

NOTES

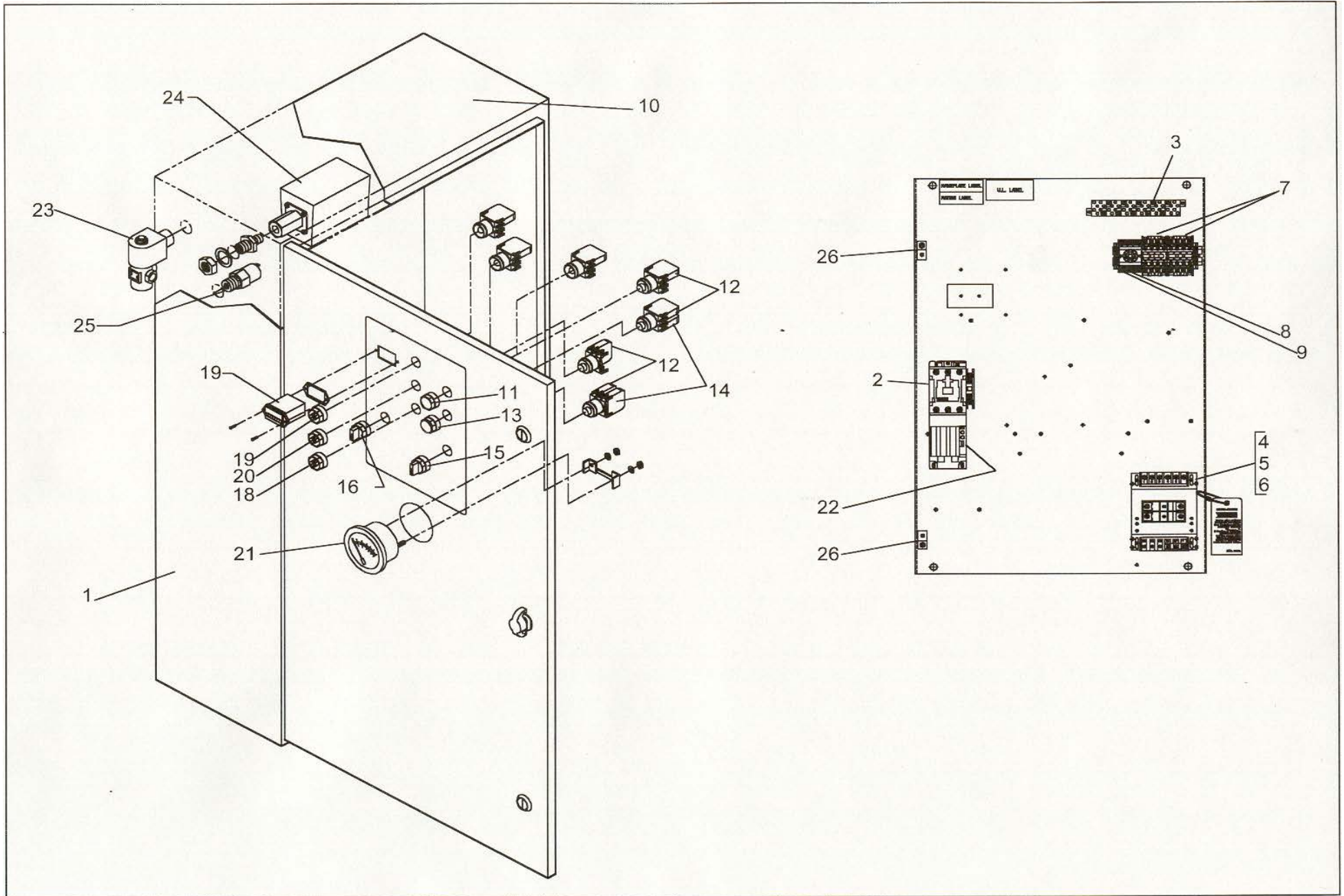


Figure 3: Electrical Components Group - FVM

PARTS LIST FOR ELECTRICAL COMPONENTS GROUP – FVM (REF. FIG. 3)

ITEM NO.	DESCRIPTION	QTY.	R/S 100
1	CONTROL PANEL ASSEMBLY		
2	STARTER WITH INTERCHANGEABLE HEATERS SIZE "S" SIZE "N"		SEE TABLE 2
3	TERMINAL BLOCK	26	RN18339
4	TRANSFORMER, 250VA, FUSED-120V		
5	FUSE, TRANSFORMER, PRIMARY		SEE TABLE 2
6	FUSE, TRANSFORMER, SECONDARY		
7	RELAY, 4 POLE, 120V, DPDT	2	1330062
*8	SOCKET (<i>OPTIONAL</i>)	1	1330049
*9	TIMER, 60 MIN., PLUG-IN (<i>OPTIONAL</i>)	1	1330026
10	ENCLOSURE, 37.5 X 21.5 X 10	1	RN18059
11	PUSH BUTTON START SWITCH	1	RN18116
12	N.O. CONTACT BLOCK	4	RN18118-2
13	PUSH BUTTON STOP SWITCH (RED)	1	RN18118
14	N.C. CONTACT BLOCK	2	RN18118-1
*15	2 POSITION SELECTOR SWITCH (CONST/AUTO) (<i>OPTIONAL</i>)	1	RN18104-9
16	2 POSITION SELECTOR SWITCH (LOAD/UNLOAD)	1	RN18104-7
17	HOURLY METER	1	1330048
*18	AMBER LIGHT (STAND BY) (<i>OPTIONAL</i>)	1	RN18218
19	RED LIGHT (STOP)	1	RN18217
20	GREEN LIGHT (POWER ON)	1	RN18219
21	TEMPERATURE SWITCH-GAUGE	1	RN18672
22	HEATER		SEE TABLE 2
23	VALVE, SOLENOID	1	RN18422
24	SWITCH, PRESSURE – 100 PSI UNITS	1	RN18133-2
	SWITCH, PRESSURE – 125 PSI UNITS	1	RN18133-2
	SWITCH, PRESSURE – 150 PSI UNITS	1	RN18133-4
	SWITCH, PRESSURE – 175 PSI UNITS	1	RN18133-4
25	ANTI-START PRESSURE SWITCH	1	RN18134
26	LUG, GROUNDING	2	VE779
	WIRING DIAGRAM FOR FVM		610011

* PARTS FOR OPTIONAL TIME DUAL CONTROL

	ITEM NO	DESCRIPTION	QTY	200 VOLT	230 VOLT	460 VOLT	575 VOLT
R/S 100	1	CONTROL PANEL ASSEMBLY	1	N/A	1330104	1330103	1330103
	2	SIZE "S" STARTER	1	N/A	RN18860	N/A	N/A
		SIZE "N" STARTER	1	N/A	N/A	RN18963	RN18963
	4	TRANSFORMER, 250V, FUSED, 120V	1	N/A	1330054	1330054	1330054
	5	FUSE, TRANSFORMER, PRIMARY	2	N/A	VE334	VE334	VE334
	6	FUSE, TRANSFORMER, SECONDARY	1	N/A	RN18393	RN18393	RN18393
	22	HEATER	1	N/A	RN18974	RN18990	RN18989

Table 2: CONTROL PANEL, STARTERS, HEATERS AND FUSES - FVM

NOTES

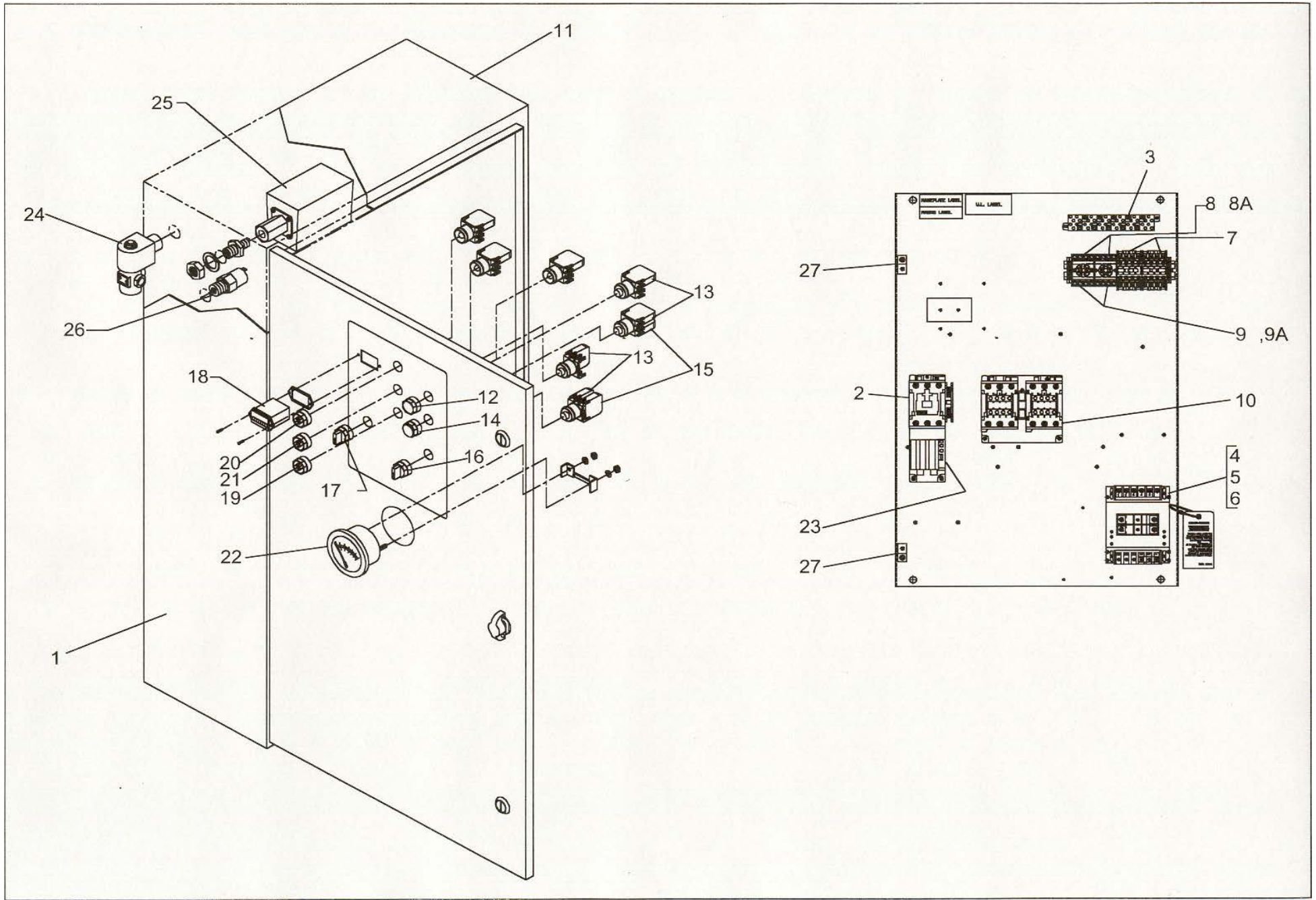


Figure 4: Electrical Components Group - Y-Delta

PARTS LIST FOR ELECTRICAL COMPONENTS GROUP – Y-DELTA (REF. FIG. 4)

ITEM NO.	DESCRIPTION	QTY.	R/S 100
1	CONTROL PANEL ASSEMBLY		
2	STARTER WITH INTERCHANGEABLE HEATERS SIZE "P" SIZE "K"		SEE TABLE 3
3	TERMINAL BLOCK	26	RN18339
4	TRANSFORMER, FUSED-120V		
5	FUSE, TRANSFORMER, PRIMARY		SEE TABLE 3
6	FUSE, TRANSFORMER, SECONDARY		
7	RELAY, 4 POLE, 120V, DPDT	2	1330062
8	SOCKET	1	1330049
*8A	SOCKET (<i>OPTIONAL</i>)	1	1330049
9	TIMER, 30 SEC., PLUG-IN	1	1330031
*9A	TIMER, 60 MIN., PLUG-IN (<i>OPTIONAL</i>)	1	1330026
10	CONTACTOR REV. M1-S/M1-S WITH NO/NC		SEE TABLE 3
11	ENCLOSURE, 37.5 X 21.5 X 10	1	RN18059
12	PUSH BUTTON START SWITCH	1	RN18116
13	N.O. CONTACT BLOCK	4	RN18118-2
14	PUSH BUTTON STOP SWITCH (RED)	1	RN18118
15	N.C. CONTACT BLOCK	2	RN18118-1
*16	2 POSITION SELECTOR SWITCH (CONST/AUTO) (<i>OPTIONAL</i>)	1	RN18104-9
17	2 POSITION SELECTOR SWITCH (LOAD/UNLOAD)	1	RN18104-7
18	HOURMETER	1	1330048
*19	AMBER LIGHT (STAND BY) (<i>OPTIONAL</i>)	1	RN18218
20	RED LIGHT (STOP)	1	RN18217
21	GREEN LIGHT (POWER ON)	1	RN18219
22	TEMPERATURE SWITCH-GAUGE	1	RN18672
23	HEATER		SEE TABLE 3
24	VALVE, SOLENOID	1	RN18422
25	SWITCH, PRESSURE – 100 PSI UNITS	1	RN18133-2
	SWITCH, PRESSURE – 125 PSI UNITS	1	RN18133-2
	SWITCH, PRESSURE – 150 PSI UNITS	1	RN18133-4
	SWITCH, PRESSURE – 175 PSI UNITS	1	RN18133-4
26	ANTI-START PRESSURE SWITCH	1	RN18134
27	LUG, GROUNDING	2	VE779
	WIRING DIAGRAM FOR Y-DELTA		610029

* PARTS FOR OPTIONAL TIME DUAL CONTROL

	ITEM NO	DESCRIPTION	QTY	200 VOLT	230 VOLT	460 VOLT	575 VOLT
R/S 100	1	CONTROL PANEL ASSEMBLY	1	1330135	1330135	1330105	1330105
	2	SIZE "P" STARTER	1	RN18967	RN18967	N/A	N/A
		SIZE "K" STARTER	1	N/A	N/A	RN18960	RN18960
	12	CONTACTOR REV. M1-S/M1-S WITH NO/NC	1	RN18931-A RN18930-A	RN18931-A RN18930-A	RN18536	RN18536
	4	TRANSFORMER, FUSED, 120V	1	1330077	1330077	1330054	1330054
	5	FUSE, TRANSFORMER, PRIMARY	2	RN18348-1	RN18348-1	VE334	VE334
	8	FUSE, TRANSFORMER, SECONDARY	1	RN18355	RN18355	RN18393	RN18393
	23	HEATER, SET	1	RN18973	RN18972	RN18983	RN18983

Table 3: CONTROL PANEL, STARTERS, HEATERS AND FUSES – Y-DELTA

NOTES

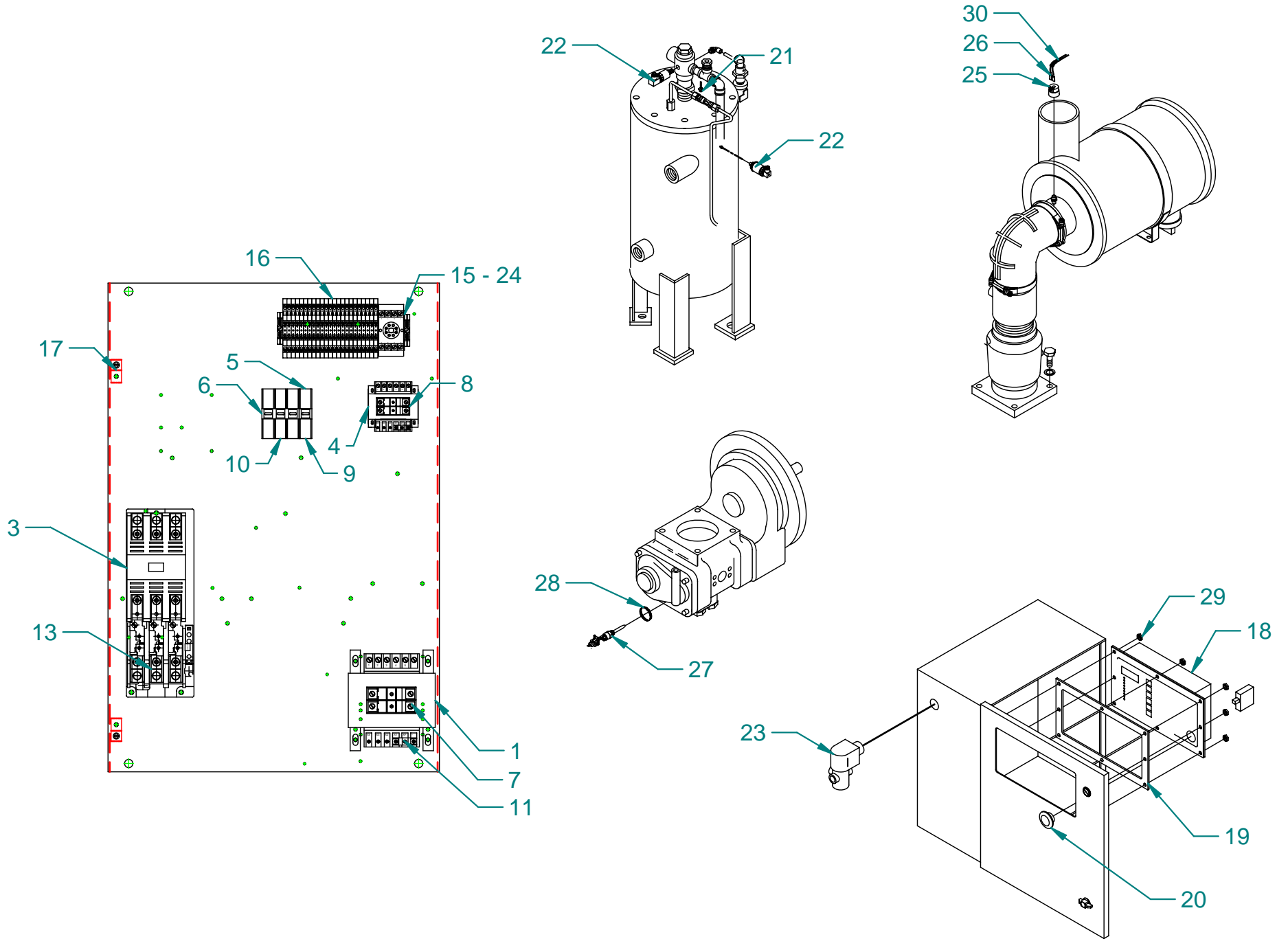


FIGURE 5: ELECTRICAL COMPONENTS GROUP FOR 75HP M6

PARTS LIST FOR ELECTRICAL COMPONENTS 75HP M6 (FIG. 5)

CAP-268

ITEM NO.	DESCRIPTION	QTY.	R/S 75
1	TRANSFORMER 350VA 230/400/460/575V – 120V	1	1330057
3	STARTER, MAIN MOTOR SIZE K	1	RN18963
4	TRANSFORMER 50 VA 120/230 – 24V	1	1330149
5	FUSE BLOCK, 1 POLE 30A	1	RN18310
6	FUSE BLOCK, 3 POLE 30A	1	VE395
7	FUSE, PRIMARY TRANSFORMER 1, 3.0 A	2	RN18347-2
8	FUSE, SECONDARY TRANSFORMER 2, 1.6 A	2	VE380
9	FUSE, PRIMARY TRANSFORMER 2, .5 A	1	RN18341
10	FUSE, PHASE RELAY, 2A	3	VE394
11	FUSE, SECONDARY TRANSFORMER 1, 3A	1	RN18355
13	HEATER PACK, MAIN MOTOR	1	RN18983
15	PHASE RELAY	1	VS631
16	TERMINAL BLOCK	1	RN18397
17	GROUNDING LUG	2	VE779
18	AIRMASTER M6 CONTROLER	1	1380001
19	GASKET FOR M6	1	1230001
20	E-STOP BUTTON WITH N.C. CONTACT	1	1240006
21	TEMPERATURE SWITCH	2	RN18657
22	PRESSURE SENSOR	2	1240016
23	SOLENOID VALVE	1	RN18422
24	8 PIN SOCKET 600V	1	VS618
25	AIR FILTER EL. INDICATOR	1	1240018
26	QUICK DISCONNECT TERMINAL	2	VE792
27	TEMPERATURE SENSOR	1	1240017
28	COPPER SEAL	1	RN18679-2
29	NUT-HEX, 10-32	8	VH15C
30	BUNDLING WRAP	2'	1030002

ROUTINE MAINTENANCE KITS

4,000 HOUR KIT

MODEL	WORKING PRESSURE			
	100 PSI	125 PSI	150 PSI	175 PSI
R/S 75	VGC543	<	<	<
R/S 100	VGC544	<	<	<

KIT INCLUDES:

- (1) SEPARATOR ELEMENT
- (4) OIL FILTER ELEMENT
- (2) HD MAIN ELEMENT
- (2) HD SAFETY ELEMENT

8,000 HOUR KIT

MODEL	WORKING PRESSURE			
	100 PSI	125 PSI	150 PSI	175 PSI
R/S 75	VGf540	<	<	<
R/S 100	VGf544	<	<	<

KIT INCLUDES:

- (2) SEPARATOR ELEMENT
- (8) OIL FILTER ELEMENT
- (4) HD MAIN ELEMENT
- (4) HD SAFETY ELEMENT

12,000 HOUR KIT

MODEL	WORKING PRESSURE			
	100 PSI	125 PSI	150 PSI	175 PSI
R/S 75	VGf570	<	<	<
R/S 100	VGf571	<	<	<

KIT INCLUDES:

- (3) SEPARATOR ELEMENT
- (12) OIL FILTER ELEMENT
- (6) HD MAIN ELEMENT
- (6) HD SAFETY ELEMENT
- (1) INLET VALVE KIT
- (1) THERMO BY-PASS VALVE KIT
- (1) MINIMUM PRESSURE VALVE KIT
- (1) COUPLING SLEEVE

NOTES

CURTIS – TOLEDO, INC.

1905 KIENLEN AVE., ST. LOUIS, MO 63133
TEL. (314) 383-1300 FAX (314) 381-1439
E-MAIL: info@curtistoledo.com
WEBSITE: www.curtistoledo.com