

# CURTIS

## *R/S 250D & 300D*

# PARTS LIST

DIRECT DRIVE

AIR COOLED &  
WATERCOOLED

### HOW TO ORDER PARTS

Give name and part number as shown in parts list and serial number. Serial number is on nameplate attached to control panel of unit.

LOT NUMBER:

R/S 250D LOT# 01  
R/S 300D LOT# 01

### IMPORTANT

Make a permanent record of the Model and Serial numbers of your machine here. You'll save time and expense by including this reference identification on replacement parts

MODEL : \_\_\_\_\_

SER. NO.: \_\_\_\_\_

## CURTIS-TOLEDO, INC.

1905 KIENLEN AVENUE, ST. LOUIS, MISSOURI 63133

Tel. (314) 383-1300

Fax (314) 381-1439

E-MAIL: CURTISCOMP@AOL.COM



# **DANGER**

Air used for breathing or food processing must meet OSHA 29CFR 1910.134 or FDA 21CFR 178.3570 Regulations. Failure to do so may cause severe injury or death

# INTRODUCTION

## HOW TO USE THE PARTS LIST

Using the List of Illustrations obtain the figure number of the assembly in which your part is located. Go to the appropriate figure and locate your part on the illustration. Using the key number, find the part on the parts list.

## LIST OF ILLUSTRATIONS

<u>Title</u>	<u>Page</u>
Major Components Group	2
Major Components Group, Watercooled	2A
Air And Oil Piping Group	6
Water And Oil Piping Group	6A
Electrical Components Group (Y-Delta)	10
Enclosure Group	14



## **WARNING**

Personal injury and/or equipment damage will result by failing to pay attention to the vital safety information and instruction in the operating and instruction manual. Carefully read, understand, and retain all safety information and instructions before operating this unit.

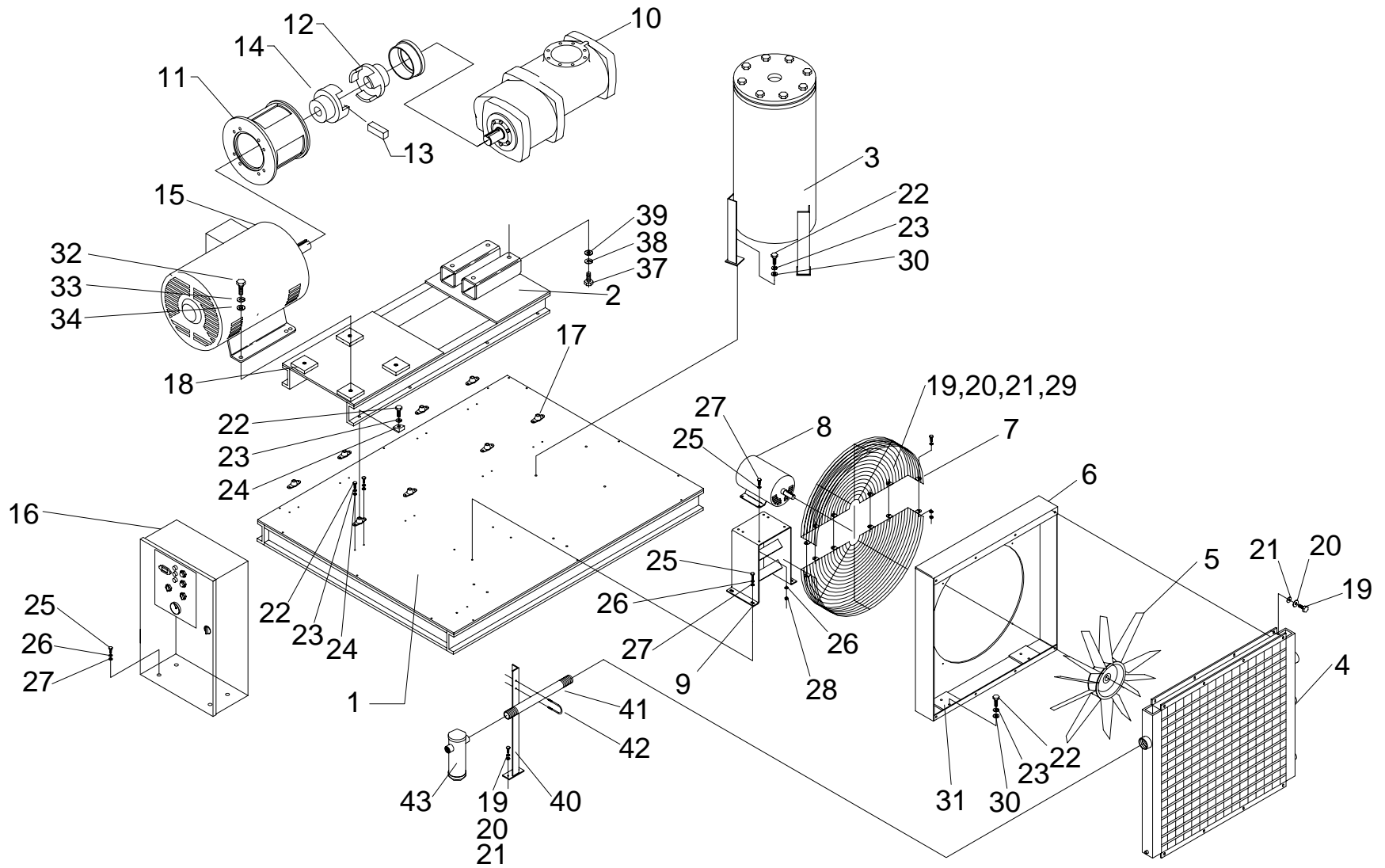


FIGURE 1: MAJOR COMPONENTS GROUP

**PARTS LIST FOR MAJOR PARTS GROUP (REF. FIG. 1)**

CAP-286

ITEM NO.	DESCRIPTION	QTY.	R/S 250D	R/S 300D
1	MAIN BASE ASSEMBLY	1	RN10111	<
2	SUB BASE ASSEMBLY	1	RN10109-1	<
3	SEPARATOR, OIL/AIR	1	RN10228-1	<
4	COOLER, AIR/OIL	1	RN32235	<
5	BLADE, FAN	1	RN32426	<
6	BOX, FAN	1	RN10475-1	<
7	GUARD, FAN, HALF	2	RN10460-4	<
*8	MOTOR 15HP, FAN, 3 PHASE, 60 Hz, 230/460V, ODP, 1140 RPM	1	RN19019	<
9	MOUNT, FAN MOTOR	1	RN10152	<
10	AIR END	SEE TABLE 1		
11	ADAPTER, C-FACE	1	RN10155	<
12	COUPLING, AIR END	6 SEE TABLE 1		
13	CUSHION SET			
14	COUPLING, MOTOR	1 RN19250 RN19300		
*15	MOTOR, MAIN, 3 PHASE, 60 Hz, 230/460V, ODP			
16	CONTROL PANEL	SEE TABLE 2 & 3		
17	MOUNT, VIBRATION	10	RN60258	<
18	MOTOR MOUNTING BLOCK	4	RN10135-7	N/A
19	HHCS 5/16-18 x 3/4", GRADE 5	12	VH12HF	<
20	LOCKWASHER, 5/16"	12	VH35H	<
21	WASHER, FLAT, 5/16"	12	VH32H	<
22	HHCS 1/2-20 X 1-1/4", GRADE 5	15	VH12NK	<
23	LOCKWASHER-KANTLINK-LIGHT, 1/2"	15	VH35P	<
24	WASHER-SQUARED BEVELED, 1/2"	8	VH50N	<
25	HHCS 3/8-16UNC X 1", GRADE 5	12	VH12KH	<
26	LOCKWASHER, 3/8"	12	VH35K	<
27	WASHER, FLAT, 3/8"	12	VH32K	<
28	NUT, HEX - 3/8"	4	VH15K	<
29	NUT, HEX - 5/16"	6	VH15H	<
30	WASHER, FLAT, 1/2"	7	VH32P	<
31	PLATE, FAN BOX MNT	2	RN10474-5	<
32	HHCS 5/8-11 X 1 1/2", GRADE 5	4	VH12RM	<
33	LOCKWASHER, 5/8"	4	VH35R	<
34	WASHER, FLAT, 5/8"	4	VH32R	<
35	BUSHING, A/E COUPLING FLANGE	SEE TABLE 1		
36	BUSHING, MOTOR FLANGE	SEE TABLE 1		
40	BRACKET	1	RN10149	<
41	NIPPLE, 3"NPT X 10"LG	1	VA13LQA	<
42	U-BOLT, 3-1/2"	1	VH2212	<
43	SEPARATOR, MOISTURE,3" (NOT SHOWN)	1	RN34130	<

\*FOR MOTOR PART NUMBERS OTHER THAN STANDARD ODP, CONSULT FACTORY

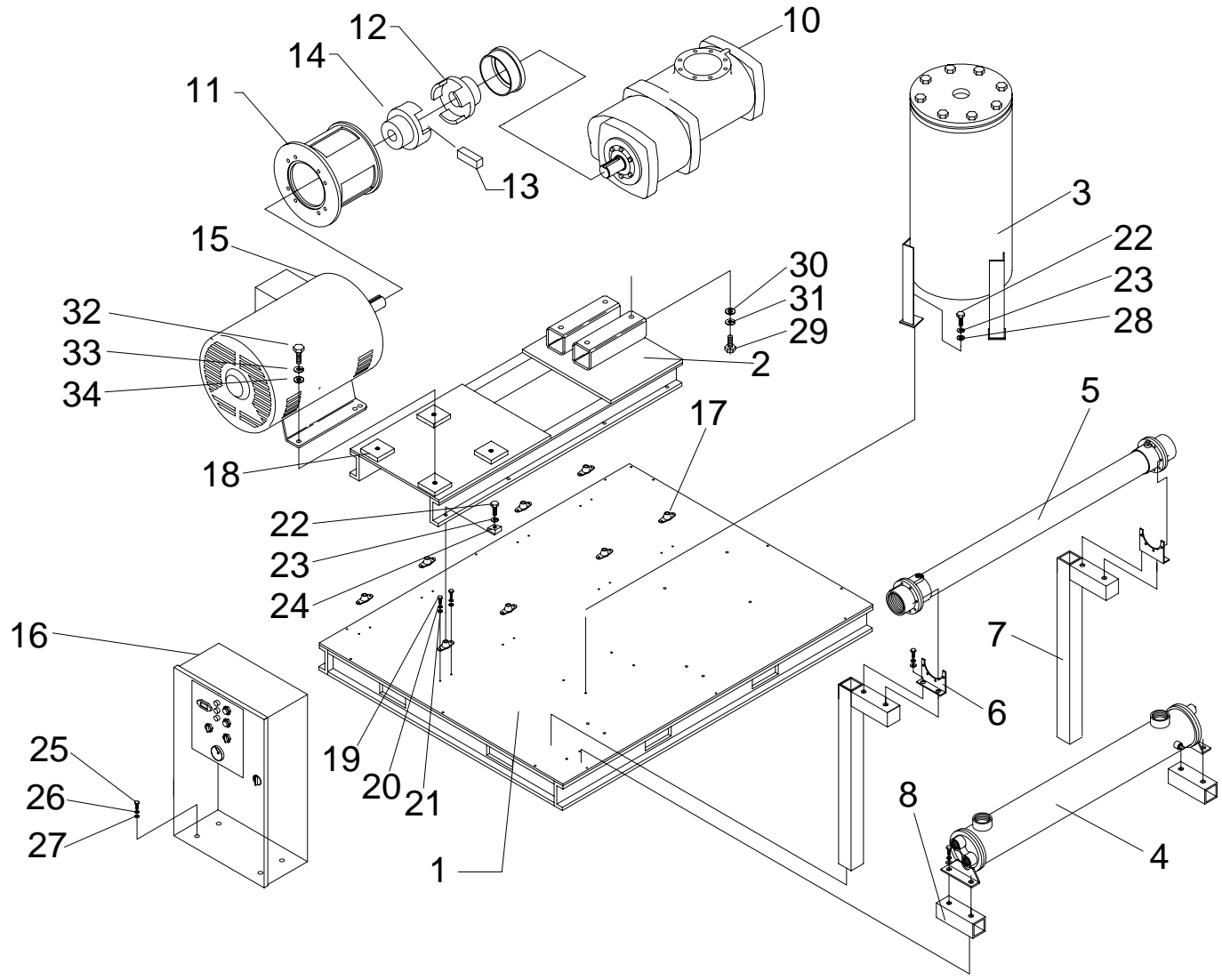


FIG.1 MAJOR COMPONENTS GROUP  
WATERCOOLED

**PARTS LIST FOR MAJOR PARTS GROUP (REF. FIG. 1)  
WATERCOOLED**

ITEM NO.	DESCRIPTION	QTY.	R/S 250D	R/S 300D
1	MAIN BASE ASSEMBLY	1	RN10111	<
2	SUB BASE ASSEMBLY	1	RN10109-1	<
3	SEPARATOR, OIL/AIR	1	RN10228-1	<
4	COOLER, OIL W/C	1	RN32264	<
5	AFTERCOOLER, AIR W/C	1	RN33144	<
6	BRACKET, MTG. AFTERCOOLER	2	RN33163	<
7	BRACKET, AFTERCOOLER	2	RN33164	<
8	SPACER, OIL COOLER	2	RN10163	<
9				
10	AIR END		SEE TABLE 1	
11	ADAPTOR, C-FACE	1	RN10155	<
12	COUPLING, AIR END			
13	CUSHION SET	6	SEE TABLE 1	
14	COUPLING, MOTOR			
*15	MOTOR, MAIN, 3 PHASE, 60 Hz, 230/460V, ODP	1	RN19250	RN19300
16	CONTROL PANEL		SEE TABLE 1	
17	MOUNT, VIBRATION	10	RN60258	<
18	MOTOR MOUNTING BLOCK	4	RN10135-7	N/A
19	HHCS 3/8-16 x 3/4", GRADE 5	28	VH12HF	<
20	LOCKWASHER, 3/8"	28	VH35H	<
21	WASHER, FLAT, 3/8"	28	VH32H	<
22	HHCS 1/2-20 X 1-1/4", GRADE 5	11	VH12NK	<
23	LOCKWASHER-KANTLINK-LIGHT, 1/2"	11	VH35P	<
24	WASHER-SQUARED BEVELED, 1/2"	8	VH50N	<
25	HHCS 3/8-16UNC X 1", GRADE 5	4	VH12KH	<
26	LOCKWASHER, 3/8"	4	VH35K	<
27	WASHER, FLAT, 3/8"	4	VH32K	<
28	WASHER, FLAT, 1/2"	3	VH32P	<
29	HHCS M20x2.5 X 35mm	4	VH1449	<
30	WASHER, FLAT, 20mm	4	VH1445	<
31	LOCKWASHER, 20mm	4	VH1446	<
32	HHCS 5/8-11 X 1 1/2", GRADE 5	4	VH12RM	<
33	LOCKWASHER, 5/8"	4	VH35R	<
34	WASHER, FLAT, 5/8"	4	VH32R	<

\*FOR MOTOR PART NUMBERS OTHER THAN STANDARD ODP, CONSULT FACTORY

MODEL	PRESSURE	A/E HUB	HARDWARE SET	CUSHION SET	MOTOR HUB	AIR END		MOTOR
						MODEL	PART #	FRAME
<b>R/S250D C295</b>		RN14530-1	RN14530-4	RN14530-3	RN14530-2	CF180G2	CS917	445TSC
<b>R/S300D C295</b>		RN14530-1	RN14530-4	RN14530-3	RN14530-2	CF180G2	CS917-1	447TSC

TABLE 1: A/E, A/E FLANGE, SLEEVE, MOTOR FLANGE, BUSHING &amp; MOTOR FRAME

# NOTES

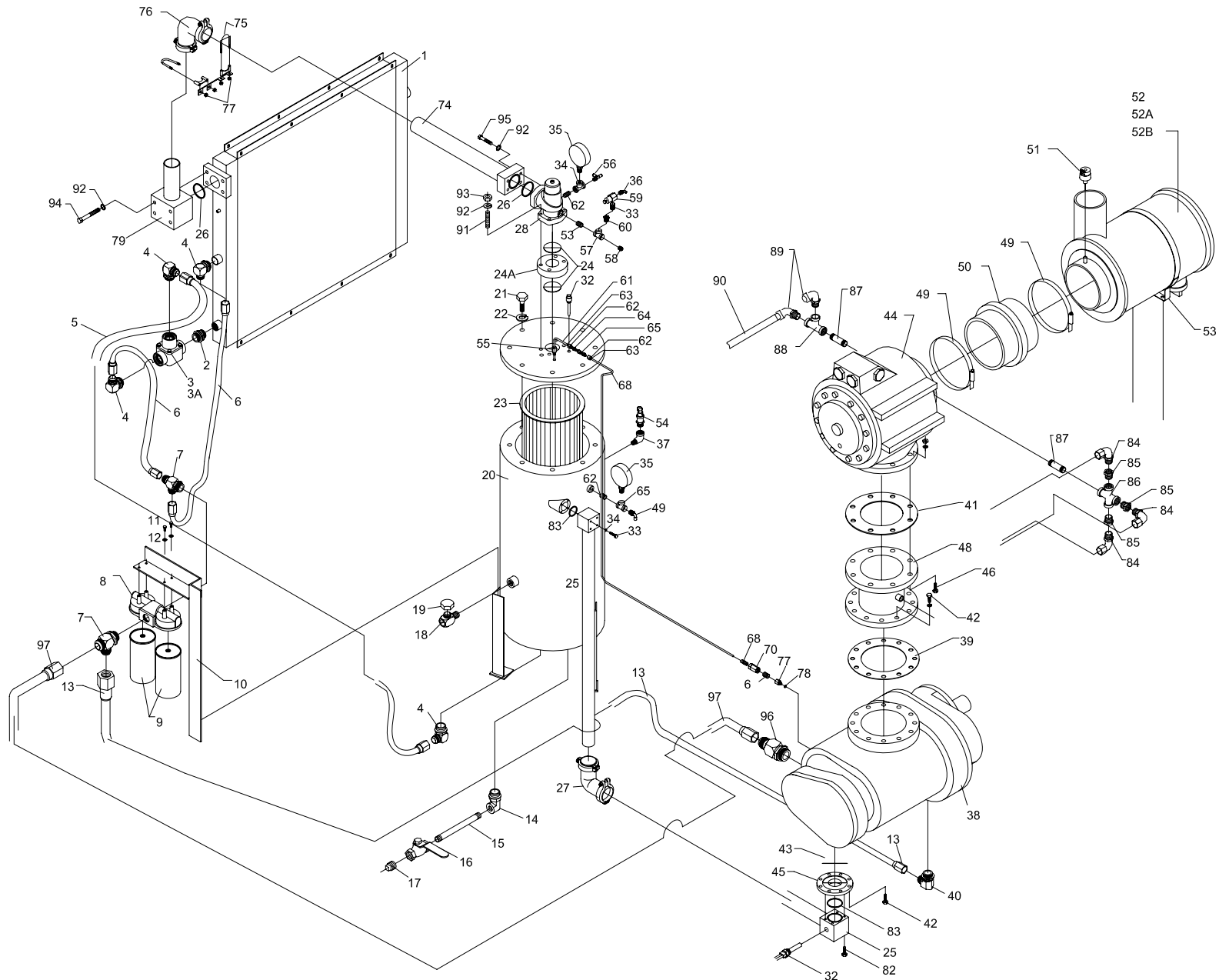


FIGURE 2: AIR AND OIL PIPING GROUP

**PARTS LIST FOR AIR AND OIL PIPING GROUP (REF. FIG. 2)**

CAP-286

ITEM NO.	DESCRIPTION	QTY.	R/S 250D	R/S 300D
1	COOLER, AIR/OIL	1	RN32235	<
2	UNION, STRAIGHT THREAD, SAE 24	1	VAB704	<
3	THERMO VALVE SAE 24, 170F	1	RN42426	<
3A	REPAIR KIT, THERMO VALVE	1	RN42426-1	<
4	CONNECTOR, ELBOW, 1 1/4" 37FL X SAE 24	5	VAB711	<
5	HOSE ASSEMBLY, #24 X 60"	1	RN60197-2	<
6	HOSE ASSEMBLY, #24 X 46"	1	RN60143-1	<
7	BRANCH TEE, STRAIGHT THREAD, SAE 24	2	VAB714	<
8	OIL FILTER HEAD	1	RN28110	<
9	OIL FILTER ELEMENT	2	RN28205	<
10	BRACKET, OIL FILTER	1	CS918	<
11	BOLT, HHCS 5/16-18 X 3/4"	2	VH12HF	<
12	LOCKWASHER, 5/16	2	VH35H	<
13	HOSE ASSEMBLY, #20 X 72"	1	RN60198	<
14	ADAPTOR, ELBOW, FEMALE 3/4"NPT X SAE 12	1	RN60078	<
15	NIPPLE, 3/4" X 12"	1	VA13ESA	<
16	VALVE, 3/4"	1	VV540	<
17	PIPE PLUG, 3/4"	1	VA01ER	<
18	OIL FILL & SIGHT GLASS	1	RN52171	<
19	OIL FILL CAP	1	CS741	<
20	SEPARATOR, AIR & OIL	1	RN10228-1	<
21	BOLT, 1-8 X 3-1/4"	8	VH12VQ	<
22	LOCKWASHER, 1"	8	VH35U	<
23	SEPARATOR ELEMENT	1	RN27535	<
24				<
24A	FLANGE	1	RN42132-3	<
25	FLANGE-PIPE ASSEMBLY, 4" EL, UPPER	2	RN10699	<
26	O-RING, #237	2	RN10693-1	<
27	COUPLING, FLEX, 4" LONG, ELBOW	1	RN60228	<
28	MIN. VALVE PRESS, 3" FLANGE	1	RN42132	<
29	FLANGE ASSEMBLY, LOWER DISCHARGE	1	RN10693	<
32	TEMPERATURE SWITCH	2	RN18657	<
33	HHCS, 5/8-11 X 7"LG	3	VH1466	<
34	LOCKWASHER, 5/8"	2	VH35R	<
35	PRESSURE GAGE	2	RN30323	<
36	1/4", QD, ELBOW	4	VAA703	<
37	STREET ELBOW, 1-1/2"	1	VA08HF[XXXXXX]	<
38	AIR END		SEE TABLE 1	
39	GASKET, AIREND TO FLANGE	1	RN24583-1	<
40	ADAPTER, JIC X METRIC	1	RN52183	<
41	GASKET, FLANGE TO INLET VALVE	1	RN24583-3	<
42	HHCS, M20 X 2.5 50mm	20	VH1443	<
43	O RING, (AIREND DISCHARGE)	1	RN10690-1	<
44	INLET VALVE, 8"	1	RN24583	<
45	FLANGE, ADAPTER	1	RN10690-2	<
46	HHCS, 3/4"DIA X 2.50 LG	8	VH12TR	<
47	NUT, 3/4"	8	VH15T	<
48	FLANGE, INLET ADAPTER	1	RN10695	<
49	CLAMP, T-BAR	2	RN24088-5	<
50	HOSE, CONNECTION, 8"	1	RN24088-6	<
51	AIR FILTER, EL. INDICATOR (OPTIONAL)	1	1240018	<
52	AIR FILTER, HEAVY DUTY ASSY	1	RN24089	<
52A	FILTER, ELEMENT PRIMARY	1	RN24089-1	<
52B	FILTER, ELEMENT SAFETY	1	RN24089-2	<
53	BAND, MTG	1	RN24088-3	<
54	VALVE, SAFETY			
	100 PSI, 125 PSI UNIT – 150 PSI VALVE, 1 1/2"	1	CF2321-150	<
	150 PSI UNIT – 175 PSI VALVE, 1 1/4"	1	RN42826	<
	175 PSI UNIT – 200 PSI VALVE, 1"	1	RN42827	<

**PARTS LIST FOR AIR AND OIL PIPING GROUP (REF. FIG. 2)**

CAP-286

ITEM NO.	DESCRIPTION	QTY.	R/S 250D	R/S 300D
55	CONNECTOR, COMPRESSION	1	RN52151	<
56	RUN TEE, 1/4"	2	VAB746	<
57	TEE, 1/2"	2	VA10DF	<
58	1/2", QD, STRAIGHT	2	VAB728	<
59	MODULATION VALVE, 1/4"	1	RN42613	<
60	BUSHING, 1/2" X 1/4"	2	VA12DBP	<
61	TUBE, SCAVENGER LINE	1	OFE961-1	<
62	SLEEVE, 1/4"	2	VAA757	<
63	NUT, 1/4"	2	VAA756	<
64	UNION, 1/4"	1	VAA701	<
65	SIGHT GLASS	1	RN52170	<
68	TUBE, SCAVENGER LINE	1	OFE998-1	<
69	CONNECTOR, 1/4", COMPRESSION W/ 9/64" ORIFICE	1	RN52137	<
70	VALVE, CHECK IN-LINE, 1/4"	1	VV834	<
73	FLANGE-PIPE WELD ASSY, 3" ELBOW	1	RN10702	<
74	FLANGE ASSY	1	RN10702	<
75	U-BOLT, 3-1/2"	1	VH2212	<
76	COUPLING, 90 DEG	1	RN60222-3	<
77	FITTING-M X FPT	1	RN60047	<
82	BOLT, 5/8-11 X 6.50LG	4	VH1658	<
83	O-RING (FLANGE TO ADAPTER PLATE, AE)	2	RN10693-1	<
84	CONNECTOR, 1/4" COMPR. ELBOW	9	VA15BCA	<
85	BUSHING, 1/2" NPT X 1/4" NPT	5	VA12DBP	<
86	CROSS, 1/2" NPT	1	VA11DG	<
87	NIPPLE, 1/2" NPT X 3"	2	VA13DEA	<
88	TEE, 1/2"	3	VA10DF	<
89	CONNECTOR, 1/2", QD, ELBOW	4	VAB724	<
90	TUBE, 1/2' NYLON #11		VA1632	<
91	STUD, 5/8-11 X 4-3/4" LG.	4	90000579	<
92	LOCKWASHER, 5/8"	12	VH35R	<
93	NUT, 5/8"	4	VH15Q	<
94	HHCS, 5/8-11 X 6" LG. (TO AIR/OIL COOLER)	4	VH1465	<
95	HHCS, 5/8-11 X 3" LG., (TO MIN. PRESSURE VALVE)	4	VH12RT	<
96	FITTING, 90°	1	RN60046	<
97	HOSE	1	RN60199-3	<

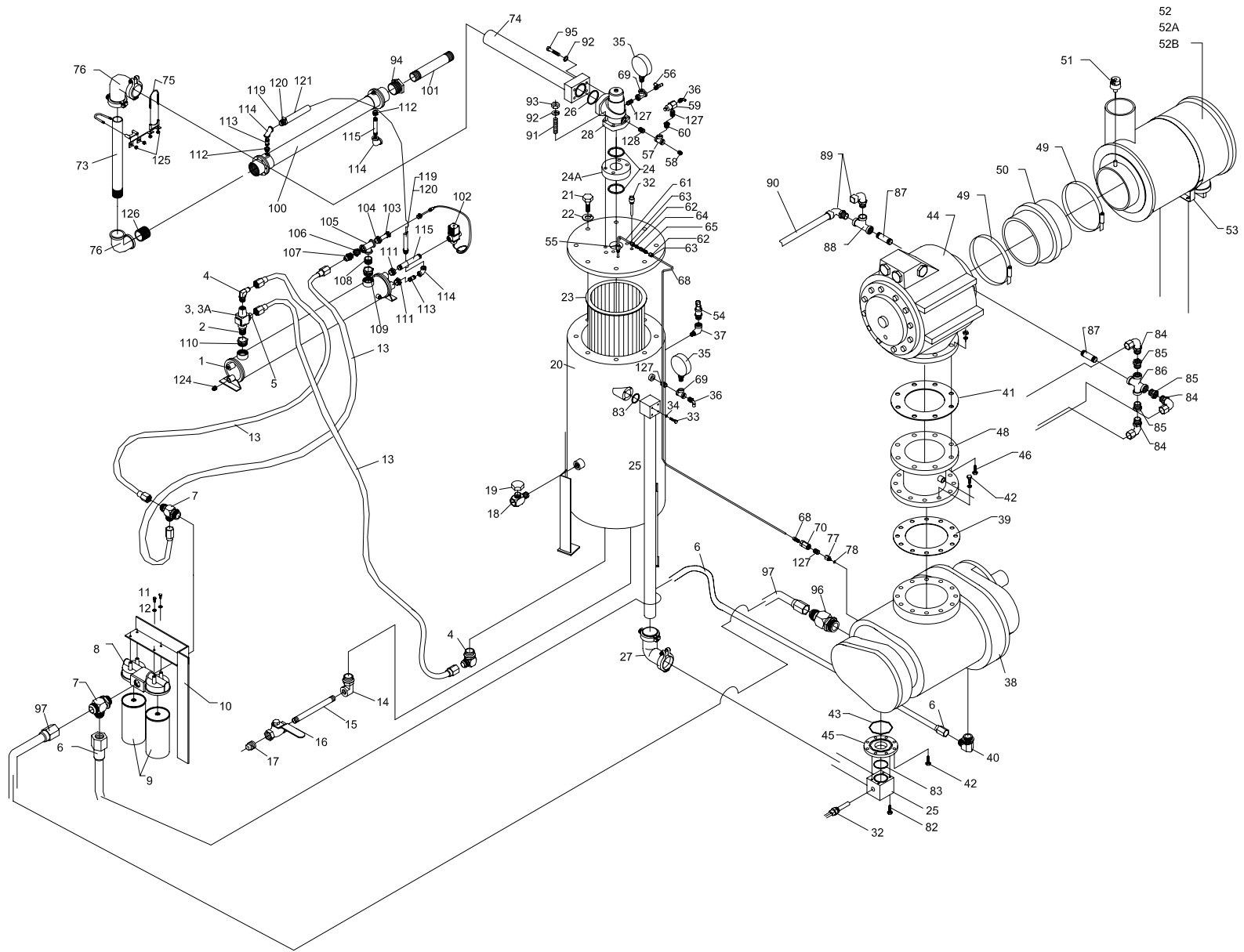


FIGURE 2: WATER AND OIL PIPING GROUP

## PARTS LIST FOR WATER AND OIL PIPING GROUP (REF. FIG. 2)

ITEM NO.	DESCRIPTION	QTY.	R/S 250D	R/S 300D
1	COOLER, OIL W/C	1	RN32264	<
2	UNION, STRAIGHT THREAD, SAE24	1	VAA514	<
3	THERMO VALVE SAE 24, 170F	1	RN42426	<
3A	REPAIR KIT, THERMO VALVE	1	RN42426-1	<
4	CONNECTOR, ELBOW, 1 1/4" 37FL X SAE 24	5	VAB711	<
5	CONNECTOR, 1 1/2" 37FL X SAE 24	1	VAA774	<
6	HOSE ASSEMBLY, #24X 46"	1	RN60143-1	<
7	BRANCH TEE, STRAIGHT THREAD, SAE 24	2	VAB714	<
8	OIL FILTER HEAD	1	RN28110	<
9	OIL FILTER ELEMENT	2	RN28205	<
10	BRACKET, OIL FILTER	1	CS918	<
11	BOLT, HHCS 5/16-18 X 3/4"	2	VH12HF	<
12	LOCKWASHER, 5/16	2	VH35H	<
13	HOSE ASSEMBLY, #24 X 60"	3	RN60197-2	<
14	ADAPTOR, ELBOW, FEMALE 3/4"NPT X SAE 12	1	RN60078	<
15	NIPPLE, 3/4" X 12"	1	VA13ESA	<
16	VALVE, 3/4"	1	VV540	<
17	PIPE PLUG, 3/4"	1	VA01ER	<
18	OIL FILL & SIGHT GLASS	1	RN52171	<
19	OIL FILL CAP	1	CS741	<
20	SEPARATOR, AIR & OIL	1	RN10228-1	<
21	BOLT, 7/8-9UNC X 2 1/4"	8	VH12VQ	<
22	LOCKWASHER, 1"	8	VH35U	<
23	SEPARATOR ELEMENT	1	RN27535	<
24	O-RING, #237	2	RN10688-1	<
24A	FLANGE	1	RN42132-3	<
25	FLANGE-PIPE ASSEMBLY	2	RN10699	<
26	O-RING, #245	2	RN10693-1	<
27	COUPLING, FLEX, 3" ELBOW, LONG	1	RN60228	<
28	MIN. VALVE PRESS, 3"	1	RN42132	<
32	TEMPERATURE SWITCH	2	RN18657	<
33	HHCS 5/8-11 X 7"	3	VH1466	<
34	LOCKWASHER, 5/8"	2	VH35R	<
35	PRESSURE GAUGE	2	RN30323	<
36	1/4", QD ELBOW	4	VAA703	<
37	STREET ELBOW, 1-1/2"	1	VA08HF	<
38	AIR END		SEE TABLE 1	
39	GASKET, AIREND TO FLANGE	1	RN24583-1	<
40	CONNECTOR, JIC 1-1/2 X 48mm	1	RN52183	<
41	GASKET, FLANGE TO INLET VALVE	1	RN24583-3	<
42	HHCS, M20 X 2.5 50mm	20	VH1443	<
43	O-RING, (AIREND DISCHARGE)	1	RN10690-1	<
44	INLET VALVE, 8"	1	RN24583	<
45	HEX HEAD BOLT, M16 X 2.0 X 45mm	1	RN10690-2	<
46	LOCKWASHER, M16	8	VH12TR	<
48	FLANGE, INLET ADAPTER	1	RN10695	<
49	CLAMP, T-BAR	2	RN24088-5	<
50	HOSE, CONNECTION, 8"	1	RN24088-6	<
51	AIR FILTER, EL. INDICATOR (OPTIONAL)	1	1240018	<
52	AIR FILTER, HEAVY DUTY ASSY.	1	RN24089	<
52A	FILTER, ELEMENT PRIMARY	1	RN24089-1	<
52B	FILTER, ELEMENT SAFETY	1	RN24089-2	<
53	BAND, MTG.	1	RN24088-3	<
54	VALVE, SAFETY, 1"			
	100 PSI, 125 PSI UNIT – 150 PSI VALVE, 1-1/2"	1	CF2321-150	<
	150 PSI UNIT – 175 PSI VALVE, 1-1/4"	1	RN42826	<
	175 PSI UNIT – 200 PSI VALVE, 1"	1	RN42827	<
55	CONNECTOR, CONNECTION	1	RN52151	<
56	RUN TEE, 1/4"	2	VAB746	<
57	TEE, 1/2"	2	VA10DF	<
58	1/2", QD, STRAIGHT	2	VAB728	<
59	MODULATION VALVE, 1/4"	1	RN42613	<

## PARTS LIST FOR WATER AND OIL PIPING GROUP (REF. FIG. 2)

ITEM NO.	DESCRIPTION	QTY.	R/S 250D	R/S 300D
60	BUSHING, 1/2" X 1/4"	2	VA12DBP	<
61	TUBE, SCAVENGER LINE	1	OFE961-1	<
62	SLEEVE, 1/4"	2	VAA757	<
63	NUT, 1/4"	2	VAA756	<
64	UNION, 1/4"	1	VAA701	<
65	SIGHT GLASS	1	RN52170	<
68	TUBE, SCAVENGER LINE	1	OFE998-1	<
69	TEE, 1/4 X 1/4 X 1/4	2	VAA704	<
70	VALVE, CHECK IN-LINE, 1/4"	1	VV834	<
73	NIPPLE, 3"NPT X 2 1/4"LG, THRD ON ONE END	1	VAD836	<
74	FLANGE ASSY	1	RN10702	<
75	U-BOLT, 3-1/2"	2	VH2212	<
76	COUPLING, 90°	2	RN60222-3	<
77	ADAPTER, M16 X 1.5 MALE X 3/8NPT FEMALE	1	RN60047	<
82	BOLT, 5/8-11 X 6.50 LG	4	VH1658	<
83	O-RING, (FLANGE TO ADAPTER PLATE, AE)	2	RN10693-1	<
84	CONNECTOR, 1/4" COMPR. ELBOW	9	VA15BCA	<
85	BUSHING, 1/2" NPT X 1/4" NPT	5	VA12DBP	<
86	CROSS, 1/2" NPT	1	VA11DG	<
87	NIPPLE, 1/2" NPT X 3"	2	VA13DEA	<
88	TEE, 1/2"	3	VA10DF	<
89	CONNECTOR, 1/2", QD ELBOW	4	VAB724	<
90	TUBE, 1/2" NYLON #11		VA1632	<
91	STUD, 5/8-11 X 4-3/4"LG	4	90000579	<
92	LOCKWASHER, 5/8"	12	VH35R	<
93	NUT, 5/8"	4	VH15Q	<
94	BUSHING, 3"NPT X 2"NPT	1	VA12LJP	<
95	HHCS, 5/8-11 X 3"LG, (TO MIN.PRESS VALVE)	4	VH12RT	<
96	FITTING, 90°	1	RN60046	<
97	HOSE	1	RN60199-3	<
98	TUBE, 1/4" NYLON #11 (NOT SHOWN)		VA1626	<
99	TUBE, 3/8" NYLON #11 (NOT SHOWN)		VA1628	<
100	AFTERCOOLER, AIR W/C	1	RN33139	RN33140
101	NIPPLE, 2"NPT X 21"	1	VAD822	<
102	VALVE, WATER CONTROL, 1-1/4"	1	CF1558	<
103	PROBE WELL, 3/4"NPT X 6"	1	CF1560	<
104	BUSHING, 2"NPT X 3/4"NPT	1	VA12JEF	<
105	TEE, 2"NPT	1	VA10JP	<
106	BUSHING, 2"NPT X 1 1/2"NPT	1	VA12JHP	<
107	CONNECTOR, #24 X 1-1/2"	1	RN60147	<
108	NIPPLE, 2"NPT, SHORT	1	VA24JBA	<
109	BUSHING, 3"NPT X 2"NPT	1	VA12LJP	<
110	BUSHING, 3"NPT X 1 1/2"NPT	1	VA12LGP	<
111	BUSHING, 2"NPT X 1-1/4"NPT, GALV.	2	VA12JGG	<
112	BUSHING, 1 1/2"NPT X 1"NPT, GALV.		VA12HFQ (4)	VA12HFQ (2)
113	NIPPLE, 1-1/4"NPT, CL., GALV	2	VA13GAA	<
114	ELBOW, 90 DEG., 1-1/4"NPT, GALV.	3	VA13GRA	<
115	NIPPLE, 1-1/4"NPT X 2-1/2", GALV.	2	VA017	<
119	NIPPLE, 1-1/4"OD X 1-1/4"NPT MALE, BRASS	2	RN60008	<
120	HOSE CLAMP, WORM DRIVE	2	RN60009	<
121	HOSE, MULTIPURPOSE, 1-1/4"ID	8'	RN60007	<
124	PLUG, 3/8"	2	VA01CA	<
125	BRACE	2	CS897	<
126	NIPPLE, 3" X 3"LG	1	VA13LEA	<
127	NIPPLE, 1/4" BLACK	4	VAA890	<
128	NIPPLE, 1/2" CLOSE	1	VA13DAA	<

# NOTES

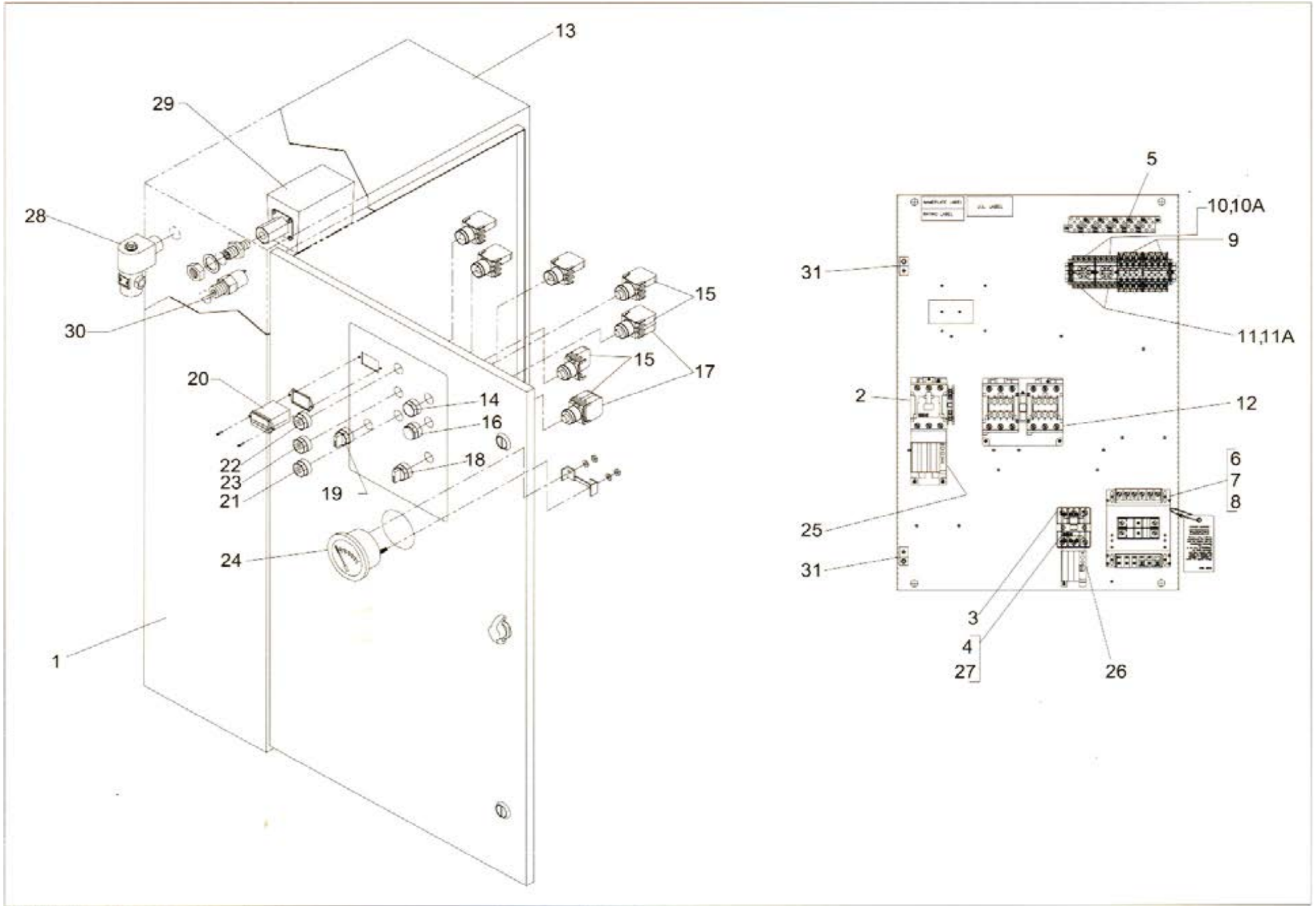


FIGURE 4: ELECTRICAL COMPONENTS GROUP – Y-DELTA

## PARTS LIST FOR ELECTRICAL COMPONENTS GROUP – Y-DELTA (REF. FIG. 4)

ITEM NO.	DESCRIPTION	QTY.	R/S 250D	R/S 300D
1	CONTROL PANEL ASSEMBLY			
2	STARTER WITH INTERCHANGEABLE HEATERS (MAIN SIZE "R")		SEE TABLE 1	
3	STARTER SIZE "E" WITH INTERCHANGABLE HEATERS	1	RN18916	<
4	FUSE BLOCK - 30A, 600V	1	RN18314-1	<
5	TERMINAL BLOCK	26	RN18339	<
6	TRANSFORMER, FUSED -120V			
7	FUSE, TRANSFORMER, PRIMARY		SEE TABLE 1	
8	FUSE, TRANSFORMER, SECONDARY			
9	RELAY, 4 POLE, 120V, DPDT	2	1330062	<
10	SOCKET	1	1330049	<
*10A	SOCKET (OPTIONAL)	1	1330049	<
11	TIMER, 30 SEC., PLUG-IN	1	1330031	<
*11A	TIMER, 60 MIN., PLUG-IN (OPTIONAL)	1	1330026	<
12	CONTACTOR REV. M1-S/M1-S WITH NO/NC		SEE TABLE 1	
13	ENCLOSURE, 37.5 X 21.5 X 10	1	RN18059	<
14	PUSH BUTTON START SWITCH	1	RN18116	<
15	N.O. CONTACT BLOCK	4	RN18118-2	<
16	PUSH BUTTON STOP SWITCH (RED)	1	RN18118	<
17	N.C. CONTACT BLOCK	2	RN18118-1	<
*18	2 POSITION SELECTOR SWITCH (CONST/AUTO) (OPTIONAL)	1	RN18104-9	<
19	2 POSITION SELECTOR SWITCH (LOAD/UNLOAD)	1	RN18104-7	<
20	HOURMETER	1	1330048	<
*21	AMBER LIGHT (STAND BY) (OPTIONAL)	1	RN18218	<
22	RED LIGHT (STOP)	1	RN18217	<
23	GREEN LIGHT (POWER ON)	1	RN18219	<
24	TEMPERATURE GAUGE	1	RN18683	<
25	HEATER - MAIN			
26	HEATER - FAN		SEE TABLE 3	
27	FUSE, FAN			
28	VALVE, SOLENOID	1	RN18422	<
29	SWITCH, PRESSURE – 100 PSI UNITS	1	RN18133-2	<
	SWITCH, PRESSURE – 125 PSI UNITS	1	RN18133-2	<
	SWITCH, PRESSURE – 150 PSI UNITS	1	RN18133-4	<
	SWITCH, PRESSURE – 175 PSI UNITS	1	RN18133-4	<
30	ANTI-START PRESSURE SWITCH	1	RN18134	<
31	LUG, GROUNDING	2	VE779	<
	WIRING DIAGRAM FOR Y-DELTA		CAB1665B1	<

\* PARTS FOR OPTIONAL TIME DUAL CONTROL

	ITEM NO	DESCRIPTION	QTY	200 VOLT	230 VOLT	460 VOLT	575 VOLT
R/S 250D	1	CONTROL PANEL ASSEMBLY	1	N/A	N/A	1330071	1330071
		SIZE "R" STARTER	1			RN18965	RN18965
	12	CONTACTOR "P" REV. M1-S/M1-S W/ NO/NC	1			RN18931-A	RN18931-A
	6	TRANSFOMER, 350VA,FUSED, 120V	1			1330057	1330057
	7	FUSE, TRANSFORMER, PRIMARY	2			RN18348-1	RN18348-1
	8	FUSE, TRANSFORMER, SECONDARY	1			RN18355	RN18355
	24	HEATER - MAIN	1			RN18973	RN18973
	25	HEATER - FAN	1			RN18979	RN18978
	26	FUSE, FAN	3	RN18318-2	RN18318-1		
R/S 300D	1	CONTROL PANEL ASSEMBLY	1	N/A	N/A	1330071	1330071
	2	SIZE "R" STARTER	1			RN18965	RN18965
	12	CONTACTOR "P" REV. M1-S/M1-S W/ NO/NC	1			RN18931-A	RN18931-A
	6	TRANSFOMER, 250VA,FUSED, 120V	1			1330057	1330057
	7	FUSE, TRANSFORMER, PRIMARY	2			RN18348-1	RN18348-1
	8	FUSE, TRANSFORMER, SECONDARY	1			RN18355	RN18355
	24	HEATER - MAIN	1			RN18973	RN18973
	25	HEATER - FAN	1			RN18979	RN18978
	26	FUSE, FAN	3	RN18318-2	RN18318-1		

Table 1: CONTROL PANEL, STARTERS, HEATERS AND FUSES – Y-DELTA

# NOTES



**PARTS LIST FOR ENCLOSURE GROUP (REF. FIG. 5)**

CAP-286

ITEM NO.	DESCRIPTION	QTY.	R/S 250D	R/S 300D
1	FRONT PANEL ASSEMBLY	1	RN10064-1	<
2	LEFT SIDE PANEL ASSEMBLY	1	RN10064-4	<
3	REAR PANEL ASSEMBLY	1	RN10064-2	<
4	RIGHT SIDE PANEL ASSEMBLY	1	RN10064-3	<
5	TOP PANEL (FRONT) ASSEMBLY	1	RN10064-5	<
6	TOP PANEL (BACK) ASSEMBLY	1	RN10064-5	<
7	TOP CROSS SUPPORT, 64" X 2"	2	RN10064-6	<
8	LOCKWASHER – 5/16"	27	VH35H	<
9	SCREW, SOCKET HEAD CAP, BUTTON HEAD, 5/16-18 x 1-1/2" LG.	12	VH12HM	<
10	GAUGE, AIR PRESSURE, 2 1/2" DIA.	2	RN30322	<
11	TUBE, 1/4" NYLON, BLACK, #11	-	VA1626	<
12	WASHER, FLAT – 5/16"	19	VH32H	<
13	SCREW, HEX HEAD CAP, 5/16-18 x 1" LG.	7	VH12HH	<
14	CONNECTOR, ELBOW, QD, 1/4" NPT x 1/4" OD TUBE	1	VAA703	<
14A	CONNECTOR, ELBOW, COMPRES, 1/4" NPT x 1/4" OD TUBE	1	RN52150-2	<
15	CONNECTOR, STRAIGHT, QD, 1/4" NPTF x 1/4" OD TUBE	1	VAA730	<
15A	CONNECTOR, STRAIGHT, COMPRES, 1/4" NPTF x 1/4" OD TUBE	1	RN52150-7	<
16	LATCH	8	CS914	<
17	PIN	6	RN10050-9	<
18	SCREW, HEX HEAD CAP, 5/16-18 x 1" LG.	4	VH12HH	<
19	NUT, 5/16-18	8	VH15H	<
20	PANEL, SIDE SPACER	2	RN10070-7	<
21	COVER, TOP SPACER	1	RN10070-8	<
22	DOOR, ACCESS ASSEMBLY (USE WITH RN10064-3)	1	RN10070-9	<
*23	FOAM, ACOUSTICAL, 1-1/2"	-	RN60419	<
*24	SOUND REDUCTION KIT (OPTIONAL)	1	CY48-9-41	<
*25	VENT COVER FRONT PANEL, FOAM ASSEMBLY (OPTIONAL)	1	RN10062-A1A	<
*26	VENT COVER COOLER SIDE, FOAM ASSEMBLY (OPTIONAL)	1	RN10062-AA	<
*27	VENT COVER TOP PANEL (REAR), FOAM ASSEMBLY (OPTIONAL)	1	RN10062-A2A	<
*28	HEX HEAD CAP SCREW, 1/4-20 X 3/4" (OPTIONAL)	37	VH12FF	<
*29	WASHER, FLAT, 1/4" (OPTIONAL)	37	VH32F	<
*30	LOCKWASHER, 1/4" (OPTIONAL)	37	VH35F1	<

\* PARTS NOT SHOWN ON DRAWING

# NOTES

# NOTES

# NOTES

## ROUTINE MAINTENANCE KITS

### 4,000-HOUR KIT

MODEL	WORKING PRESSURE			
	100 PSI	125 PSI	150 PSI	175 PSI
R/S 250D	VGE546	<	<	<
R/S 300D	VGE546	<	<	<

#### KIT INCLUDES:

- (1) SEPARATOR ELEMENT
- (4) OIL FILTER ELEMENT
- (2) HD MAIN ELEMENT
- (2) HD SAFETY ELEMENT

### 8,000-HOUR KIT

MODEL	WORKING PRESSURE			
	100 PSI	125 PSI	150 PSI	175 PSI
R/S 250D	VGE547	<	<	<
R/S 300D	VGE547	<	<	<

#### KIT INCLUDES:

- (2) SEPARATOR ELEMENT
- (8) OIL FILTER ELEMENT
- (4) HD MAIN ELEMENT
- (4) HD SAFETY ELEMENT

### 12,000-HOUR KIT

MODEL	WORKING PRESSURE			
	100 PSI	125 PSI	150 PSI	175 PSI
R/S 250D	VGE548	<	<	<
R/S 300D	VGE548	<	<	<

#### KIT INCLUDES:

- (3) SEPARATOR ELEMENT
- (12) OIL FILTER ELEMENT
- (6) HD MAIN ELEMENT
- (6) HD SAFETY ELEMENT
- (1) INLET VALVE KIT
- (1) THERMO BY-PASS VALVE KIT
- (1) MINIMUM PRESSURE VALVE KIT
- (1) COUPLING SLEEVE

**CURTIS – TOLEDO, INC.**

1905 KIENLEN AVE., ST. LOUIS, MO 63133  
TEL. (314) 383-1300 FAX (314) 381-1439  
E-MAIL: CURTISCOMP@AOL.COM